

West Yellowstone, Montana

Yellowstone Airport



2016 Economic Impact Study for
MONTANA AIRPORTS



Montana's Airports Support Our State

Montana's airports play an integral role in our transportation system by providing access to destinations within the state, throughout the country, and across the globe. Airports also offer significant economic benefits to our communities by supporting jobs; generating payroll; paying taxes; and triggering spending at local, regional, and state levels.

The importance of airports goes beyond transportation and economics. Airports offer services and other attributes of value that cannot always be easily measured in dollars and cents. Residents and visitors use airports for leisure and business travel, and airports serve as the base for a wide range of critical activities such as wildland firefighting, search and rescue operations, and training for future aviators. Airports are the starting point for aircraft that conduct utility inspections, provide medical evacuation services, and transport staff and executives for business activity.

To better understand the value of Montana's airports from the perspective of both economics and community benefits, the Montana Department of Transportation (MDT) conducted a comprehensive study of the state's aviation facilities. The study analyzed the contributions of the Montana airport system, including aviation-related and non-aviation-related businesses, visitor spending, capital expenditures on construction, and additional spin-off (or "multiplier") effects. The study also examined specific activities and uses at each airport to identify how these facilities support Montana's residents and visitors.

Methodology

This study expresses the economic benefits of Montana's airports in terms of jobs, payroll, and total annual economic impact derived from the activities that occur at aviation facilities. Direct impacts include those from on-airport businesses, construction-related activities, and spending from visitors who travel through an airport. Airports host on-airport businesses that serve aircraft or passengers such as:

- Administration
- Military
- Airlines
- Maintenance
- Parking
- Concessions
- Car rental
- General aviation
- Air tours
- Air cargo

Additionally, airside and landside construction projects require continuous investments, many of which are high-dollar, long-term undertakings. Because commercial service and general aviation airports are essential to visitors' abilities to conduct business or vacation in Montana, airports support the hospitality industry through lodging, restaurant, retail, and entertainment spending.

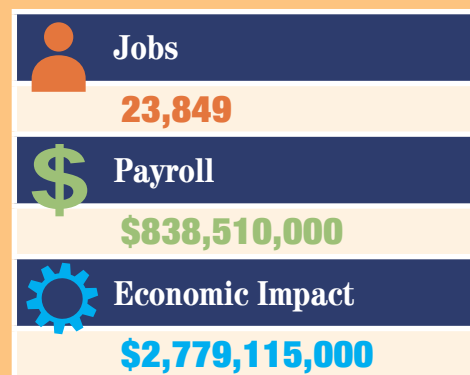
Airports' direct impacts also have spin-off effects throughout Montana, as dollars spent at an airport and by visitors off-airport are re-spent locally, regionally, and statewide. Spin-off effects are caused when a portion of direct business revenues are used to purchase goods and services in Montana (i.e., indirect effects) and when the portion of revenues paid as wages to workers are spent within the state (i.e., induced effects).

Combined, direct impacts and spin-off effects compose the total contribution of an individual airport and determine the statewide impact of Montana's airport system.



STATEWIDE IMPACTS

Aviation is a vital key to Montana's economic activity and transportation network. The public-use airports in the state contribute:



DIRECT ECONOMIC IMPACTS

On-Airport
\$7,428,000

Construction
\$781,000

Visitor Spending
\$8,103,000



WYS TOTAL IMPACTS

A summary box containing three icons: a person icon with the number '253', a dollar sign icon with '\$9,684,000', and a gear icon with '\$27,226,000'.

Corporate/
Business Activity



Aerial/Wildland
Firefighting



Military Exercise/
Training



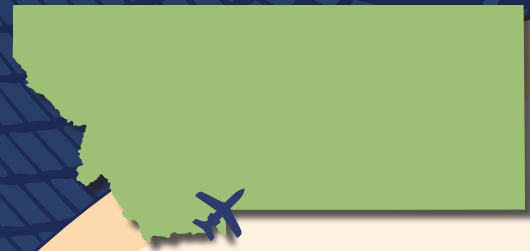
Emergency
Medical Aviation



Police/Law
Enforcement



Yellowstone Airport



Yellowstone Airport (WYS) is located two miles northwest of West Yellowstone in Gallatin County, Montana. Tucked away in the southern region of the state between the Wyoming and Idaho borders, the region is known for its beautiful outdoor scenery, attracting people from all over the world. With direct access to Highway 191 and located less than two miles from the Yellowstone National Park entrance, it provides the most convenient gateway to the surrounding features of the area.

Operating as a commercial Essential Air Service airport, Yellowstone Airport provides vital alternative transportation access to an otherwise isolated community. The airport operates seasonally, accommodating general aviation services for six months and commercial air service for four months. In addition to commercial services, the airport hosts extensive general aviation activities including:

- Corporate business activity
- Aerial surveying
- Aerial wildland firefighting
- Military exercises
- Search and rescue
- Emergency medical aviation
- Public charters

Aerial wildland firefighting has a large presence at Yellowstone Airport, a critical service for the protection of the national forests. With an 8,399-foot runway, the airport caters to virtually any aircraft. Air Force One and a C-5 cargo aircraft have landed on the runway, along with other larger military and corporate jets. Airport tenants comprise fixed-base operator (FBO) Yellowstone Aviation, commercial service provider SkyWest Airlines, the Smoke Jumper Café, and a couple rental car centers.

This hidden airport provides all of the essential services to visit the surrounding national park and serves as a cornerstone to the entire region's economic prosperity.

Alternative accessible formats of this document will be provided on request. Persons who need an alternative format should contact the Civil Rights Bureau, Department of Transportation, 2701 Prospect Avenue., PO Box 201001, Helena, MT 59620. Telephone 406-444-9229. Those using a TTY may call 1(800)335-7592 or through the Montana Relay Service at 711.



Montana Department of Transportation
AERONAUTICS DIVISION

2630 Airport Road
PO Box 200507
Helena, MT 59620-0507

Prepared by:

Kimley»Horn

With additional support provided by EDR Group,
KLJ Engineering, and the University of Montana.

This document is printed at state expense. Information on the cost of producing this publication may be obtained by contacting the Department of Administration.