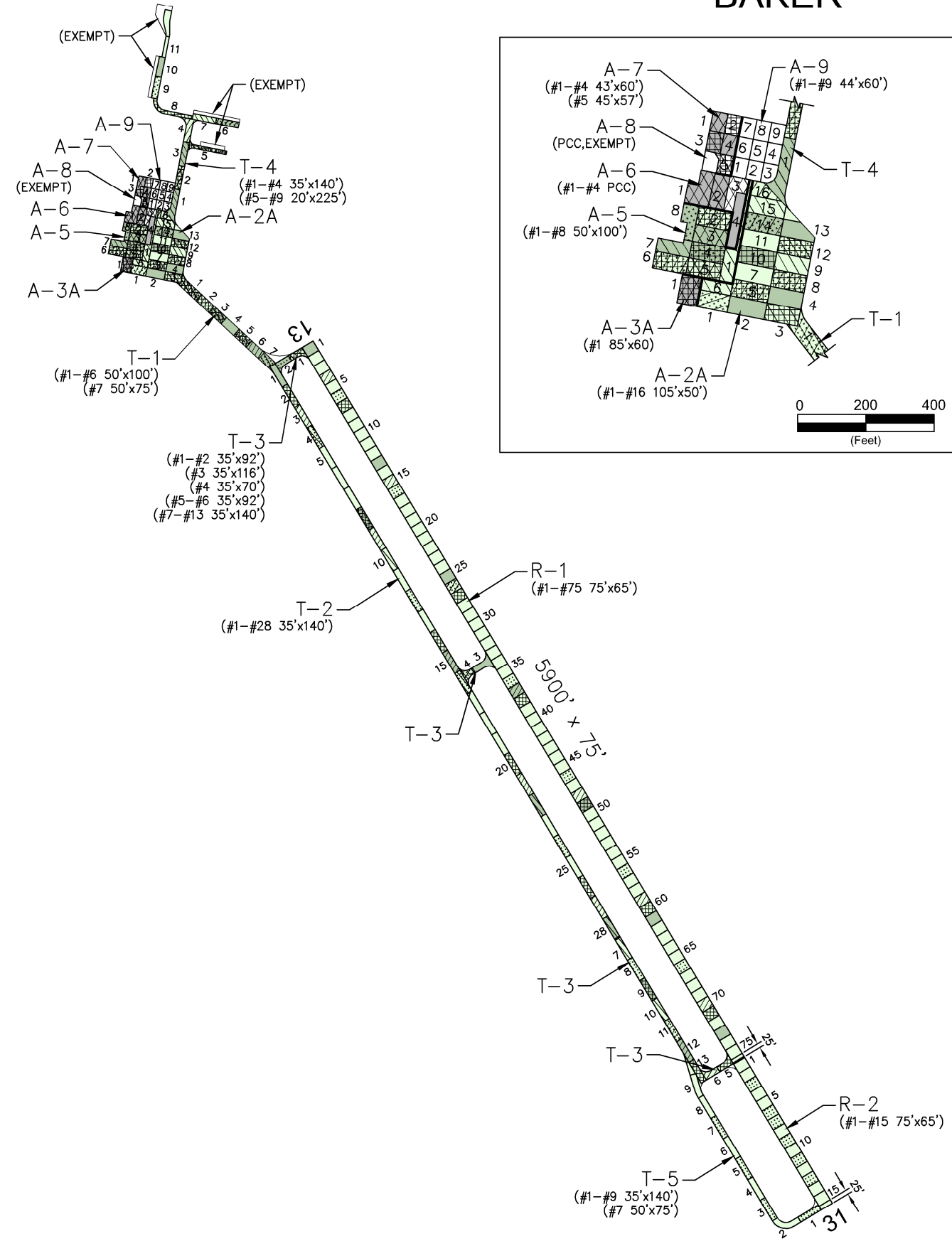


BAKER

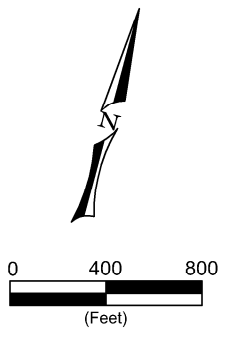


PAVEMENT STRENGTH SURVEY/PAVEMENT CONDITION SURVEY

PAVE. IDENT.	SOIL CLASS	SUB GRADE CLASS	SUBBASE COURSE	BASE COURSE	SURFACE COURSE	OVERLAY	PAVEMENT STRENGTH			REMARKS
							MAX. GROSS LOAD (LBS)			
							SINGLE	DUAL	DUAL TAN.	
RUNWAYS										
R-1			12" COMPACTED SUBGRADE + 35" SAND	12" P-208 + 12" CEMENT	5" P-401	4" P-403	17,500			3,4,6,7,8
R-2				10" P-208	5" P-401		17,500			8
TAXIWAYS										
T-1				11" P-208	2" P-401	3" P-401	12,500			2,4,6,7
T-2				6" AGG.	P-609/2" RM	3" P-401	12,500			2,4,6,7
T-3				11" P-208	2" P-401/P-609	4.5" P-401	12,500			4,6,7
T-4			GEOGRID 18" P-153	GEOTEXTILE FABRIC 16" P-208	4" P-401					5,7
T-5			GEOGRID 18" P-153	10" P-208	4" P-401					8
APRONS										
A-2A				11" P-208	2" P-401	5.25" P-401	12,500			2,5,7
A-3A			FILTER FABRIC	6" AGG	P-609/2" RM	P-609, 5.25" P-401				2,5,7
A-5			GEOGRID 18" P-153	GEOTEXTILE FABRIC 16" P-208	4" P-401					5,7
A-6			GEOGRID 22" P-153	GEOTEXTILE FABRIC 8" P-208	8" P-501					5,7
A-7			GEOGRID 18" P-153	GEOTEXTILE FABRIC 16" P-208	4" P-401					6
A-8					" P-501					7
A-9			GEOGRID 18" P-153	16" P-208	4" P-401					8

REMARKS:

- 1971, RM = ROAD MIX
- AIP-02, 1988, CONSTRUCT PARTIAL PARALLEL TAXIWAY.
- AIP-03, 1992, RECONSTRUCT PORTION OF RUNWAY.
- AIP-04, 1993, RECONSTRUCT PORTION OF RUNWAY, REHABILITATE PARALLEL TAXIWAY, AND WIDEN CONNECTING TAXIWAY.
- AIP-06, 1996, RECONSTRUCT PORTION OF APRON, OVERLAY APRON, AND CONSTRUCT TAXIWAY.
- AIP-07, 2001, OVERLAY RUNWAY 13/31 AND TAXIWAYS, CONSTRUCT APRON (A-7).
- AIP-008-2003, CRACK SEAL; CONSTRUCT CONCRETE APRON (A-8).
- AIP-015-2012, EXTEND RUNWAY 31 (R-2) AND TAXIWAY A (T-5); OVERLAY RUNWAY (R-1); APRON EXPANSION (A-9).
- AIP-018-2015, REHABILITATE APRON.



LEGEND ■ 2003 SURVEY AREA ■ 2006 SURVEY AREA ■ 2009 SURVEY AREA ■ 2012 SURVEY AREA ■ 2015 SURVEY AREA ■ MAINTAIN: PCI > 60 ■ TRANSITION: PCI 45 TO 60 ■ RECONSTRUCT: PCI < 45	DATE OF PAVEMENT STRENGTH SURVEY:	SEPT. 8, 1988	MONTANA AVIATION SYSTEM PLAN 2015 UPDATE - PAVEMENT CONDITION INDEXES	
	EVALUATED BY:	J. STYBA		BAKER MUNICIPAL (BHK)
	DATE OF MOST RECENT PAVEMENT CONDITION SURVEY:	SEPT. 3, 2015	Date: DECEMBER 2015	
	EVALUATED BY:	B. BURKLAND	Prepared By: RPA Robert Peccia & Associates, Inc.	
LOCATION:	BAKER MONTANA			

BAKER AIRPORT

9/3/2015



A-2A, Surface detail



A-2A, Overview



A-5, Overview



A-5, Surface detail

BAKER AIRPORT

9/3/2015



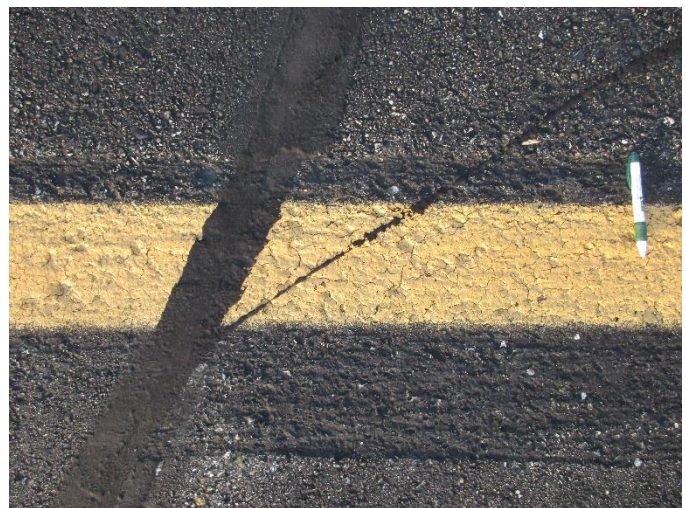
T-1, Surface detail with raveling



T-1, Overview



T-2, Overview



T-2, Surface detail with sealed crack and grinding

BAKER AIRPORT

9/3/2015



T-3, Surface detail



T-3, Overview



T-4, Surface detail with depression



T-4, Overview

BAKER AIRPORT

9/3/2015



T-5, Overview



T-5, Surface detail with sealed crack



R-1, Surface detail



R-1, Overview

BAKER AIRPORT

9/3/2015



R-2, Overview



R-2, Surface detail

BAKER AIRPORT

Branch: 56A

APRON

A-2A

Length: 400 LF **Width:** 300 LF **Area:** 120,000 SF **Last Const. :** 1992 **Family:** ACAM15
From: MAIN APRON **To:** **Surface:** AAC

Inspections

Samples Surveyed: 5 **Total Samples:** 16 **Last Inspection Date (RPA)** 9/3/2015 **PCI:** **66**

Sample # 1 **Area:** 5250 SF

Distress Description	Severity	Quantity
LONGITUDINAL/TRANSVERSE CRACKING	L	421 LF
WEATHERING	L	157 SF
LONGITUDINAL/TRANSVERSE CRACKING	M	42 LF
RAVELING	L	26 SF
RAVELING	M	5 SF
RAVELING	H	4 SF
DEPRESSION	L	4 SF
PATCHING	L	1 SF

Sample # 5 **Area:** 5250 SF

Distress Description	Severity	Quantity
LONGITUDINAL/TRANSVERSE CRACKING	L	148 LF
WEATHERING	L	105 SF
RAVELING	L	26 SF
LONGITUDINAL/TRANSVERSE CRACKING	M	7 LF
RAVELING	M	4 SF
DEPRESSION	H	3 SF
PATCHING	L	3 SF

Sample # 8 **Area:** 5250 SF

Distress Description	Severity	Quantity
LONGITUDINAL/TRANSVERSE CRACKING	L	392 LF
WEATHERING	L	105 SF
LONGITUDINAL/TRANSVERSE CRACKING	M	8 LF
RAVELING	L	26 SF
RAVELING	M	5 SF
DEPRESSION	H	4 SF
PATCHING	L	4 SF

Sample # 12 **Area:** 5250 SF

Distress Description	Severity	Quantity
LONGITUDINAL/TRANSVERSE CRACKING	L	195 LF
WEATHERING	L	105 SF
RAVELING	L	26 SF
LONGITUDINAL/TRANSVERSE CRACKING	M	3 LF
PATCHING	H	6 SF
DEPRESSION	H	3 SF
RAVELING	H	1 SF

Sample # 14 **Area:** 5250 SF

Distress Description	Severity	Quantity
LONGITUDINAL/TRANSVERSE CRACKING	L	183 LF
LONGITUDINAL/TRANSVERSE CRACKING	M	37 LF
WEATHERING	L	105 SF
RAVELING	L	26 SF
RAVELING	M	8 SF
PATCHING	L	2 SF
OIL SPILLAGE	N	2 SF

Extrapolated Distress Quantities*

Distress Description	Severity	Quantity	Density	Deduct
PATCHING	H	27 SF	0.02 %	15.50
LONGITUDINAL/TRANSVERSE CRACKING	L	6121 LF	5.10 %	14.98
DEPRESSION	H	46 SF	0.04 %	12.00
LONGITUDINAL/TRANSVERSE CRACKING	M	443 LF	0.37 %	7.20
RAVELING	H	23 SF	0.02 %	6.00
RAVELING	M	101 SF	0.08 %	4.00
OIL SPILLAGE	N	9 SF	0.01 %	2.00
PATCHING	L	46 SF	0.04 %	2.00
RAVELING	L	594 SF	0.50 %	1.76
WEATHERING	L	2638 SF	2.20 %	0.71
DEPRESSION	L	18 SF	0.02 %	0.30

* Multiple deduct values are scaled down from their algebraic sum to keep the model consistent with experimental data.

BAKER AIRPORT

Branch: 56A

APRON

A-2A

Percent of Deduct Values Based on Distress Mechanism

0.0 % Load

78.0 % Climate/Durability

22.0 % Other

BAKER AIRPORT

Branch: 56A

APRON

A-5

Length: 200 LF **Width:** 200 LF **Area:** 40,000 SF **Last Const. :** 1997 **Family:** ACAM15
From: Apron **To:** Hangars **Surface:** AC

Inspections

Samples Surveyed: 4 **Total Samples:** 8 **Last Inspection Date (RPA)** 9/3/2015 **PCI:** 61

Sample # 2 **Area:** 5000 SF

Distress Description	Severity	Quantity
LONGITUDINAL/TRANSVERSE CRACKING	L	198 LF
LONGITUDINAL/TRANSVERSE CRACKING	M	42 LF
WEATHERING	L	135 SF
DEPRESSION	L	40 SF
RAVELING	L	25 SF
RAVELING	M	10 SF
LONGITUDINAL/TRANSVERSE CRACKING	H	2 LF

Sample # 4 **Area:** 5000 SF

Distress Description	Severity	Quantity
LONGITUDINAL/TRANSVERSE CRACKING	L	568 LF
LONGITUDINAL/TRANSVERSE CRACKING	M	52 LF
WEATHERING	L	100 SF
PATCHING	L	40 SF
DEPRESSION	L	28 SF
RAVELING	L	25 SF
LONGITUDINAL/TRANSVERSE CRACKING	H	3 LF
RAVELING	M	4 SF

Sample # 6 **Area:** 5000 SF

Distress Description	Severity	Quantity
LONGITUDINAL/TRANSVERSE CRACKING	L	197 LF
WEATHERING	L	100 SF
PATCHING	L	40 SF
LONGITUDINAL/TRANSVERSE CRACKING	M	12 LF
RAVELING	L	25 SF
PATCHING	H	8 SF
RAVELING	M	5 SF

Sample # 8 **Area:** 3700 SF

Distress Description	Severity	Quantity
LONGITUDINAL/TRANSVERSE CRACKING	L	235 LF
LONGITUDINAL/TRANSVERSE CRACKING	M	23 LF
WEATHERING	L	74 SF
RAVELING	L	18 SF
RAVELING	M	12 SF
PATCHING	M	12 SF
PATCHING	L	8 SF

Extrapolated Distress Quantities*

Distress Description	Severity	Quantity	Density	Deduct
LONGITUDINAL/TRANSVERSE CRACKING	L	2563 LF	6.41 %	17.58
PATCHING	H	17 SF	0.04 %	15.50
LONGITUDINAL/TRANSVERSE CRACKING	M	276 LF	0.69 %	9.55
LONGITUDINAL/TRANSVERSE CRACKING	H	11 LF	0.03 %	7.50
PATCHING	M	26 SF	0.06 %	6.20
RAVELING	M	66 SF	0.17 %	4.44
PATCHING	L	188 SF	0.47 %	2.41
DEPRESSION	L	145 SF	0.36 %	2.18
RAVELING	L	199 SF	0.50 %	1.77
WEATHERING	L	875 SF	2.19 %	0.71

* Multiple deduct values are scaled down from their algebraic sum to keep the model consistent with experimental data.

Percent of Deduct Values Based on Distress Mechanism

0.0 % Load 97.0 % Climate/Durability 3.0 % Other

BAKER AIRPORT

Branch: 56R

RUNWAY

R-1

Length: 4,900 LF **Width:** 75 LF **Area:** 367,500 SF **Last Const. :** 2012 **Family:** ACRMU15
From: STA 0+00 RWY 12/30 **To:** STA 49+00 RWY 12/30 **Surface:** AAC

Inspections

Samples Surveyed: 7 **Total Samples:** 75 **Last Inspection Date (RPA)** 9/3/2015 **PCI:** 94

Sample # 6	Distress Description LONGITUDINAL/TRANSVERSE CRACKING WEATHERING PATCHING DEPRESSION	Severity L L M M	Quantity 53 LF 49 SF 1 SF 1 SF	Area: 4875 SF
Sample # 16	Distress Description LONGITUDINAL/TRANSVERSE CRACKING WEATHERING PATCHING	Severity L L L	Quantity 37 LF 49 SF 1 SF	Area: 4875 SF
Sample # 26	Distress Description WEATHERING	Severity L	Quantity 49 SF	Area: 4875 SF
Sample # 36	Distress Description WEATHERING LONGITUDINAL/TRANSVERSE CRACKING PATCHING	Severity L L L	Quantity 49 SF 7 LF 1 SF	Area: 4875 SF
Sample # 46	Distress Description LONGITUDINAL/TRANSVERSE CRACKING WEATHERING	Severity L L	Quantity 26 LF 49 SF	Area: 4875 SF
Sample # 56	Distress Description LONGITUDINAL/TRANSVERSE CRACKING WEATHERING	Severity L L	Quantity 84 LF 49 SF	Area: 4875 SF
Sample # 66	Distress Description WEATHERING	Severity L	Quantity 49 SF	Area: 4875 SF

Extrapolated Distress Quantities*

Distress Description	Severity	Quantity	Density	Deduct
PATCHING	M	11 SF	0.00 %	6.20
DEPRESSION	M	11 SF	0.00 %	5.20
LONGITUDINAL/TRANSVERSE CRACKING	L	2229 LF	0.61 %	4.23
PATCHING	L	22 SF	0.01 %	2.00
WEATHERING	L	3694 SF	1.01 %	0.50

* Multiple deduct values are scaled down from their algebraic sum to keep the model consistent with experimental data.

Percent of Deduct Values Based on Distress Mechanism

0.0 % Load 71.0 % Climate/Durability 29.0 % Other

BAKER AIRPORT

Branch: 56T

TAXIWAY

T-1

Length: 675 LF **Width:** 50 LF **Area:** 33,750 SF **Last Const. :** 2001 **Family:** ACRMU15
From: APRON A-1 **To:** T-2 and T-3 **Surface:** AAC

Inspections

Samples Surveyed: 4 **Total Samples:** 7 **Last Inspection Date (RPA)** 9/3/2015 **PCI:** 72

Sample # 1 **Area:** 5000 SF

Distress Description	Severity	Quantity
LONGITUDINAL/TRANSVERSE CRACKING	L	382 LF
WEATHERING	L	1000 SF
LONGITUDINAL/TRANSVERSE CRACKING	M	35 LF
RAVELING	L	25 SF
WEATHERING	M	12 SF
RAVELING	M	6 SF

Sample # 3 **Area:** 5000 SF

Distress Description	Severity	Quantity
LONGITUDINAL/TRANSVERSE CRACKING	L	197 LF
WEATHERING	L	100 SF
LONGITUDINAL/TRANSVERSE CRACKING	M	28 LF
RAVELING	L	25 SF
RAVELING	M	6 SF
PATCHING	H	1 SF

Sample # 5 **Area:** 5000 SF

Distress Description	Severity	Quantity
LONGITUDINAL/TRANSVERSE CRACKING	L	111 LF
WEATHERING	L	100 SF
LONGITUDINAL/TRANSVERSE CRACKING	M	17 LF
RAVELING	L	25 SF
RAVELING	M	6 SF

Sample # 7 **Area:** 3750 SF

Distress Description	Severity	Quantity
LONGITUDINAL/TRANSVERSE CRACKING	L	171 LF
WEATHERING	L	76 SF
LONGITUDINAL/TRANSVERSE CRACKING	M	23 LF
RAVELING	L	19 SF
RAVELING	M	6 SF

Extrapolated Distress Quantities*

Distress Description	Severity	Quantity	Density	Deduct
PATCHING	H	2 SF	0.01 %	15.50
LONGITUDINAL/TRANSVERSE CRACKING	L	1550 LF	4.59 %	13.88
LONGITUDINAL/TRANSVERSE CRACKING	M	185 LF	0.55 %	8.65
RAVELING	M	43 SF	0.13 %	4.19
RAVELING	L	169 SF	0.50 %	1.77
WEATHERING	L	2297 SF	6.81 %	1.32
WEATHERING	M	22 SF	0.06 %	1.20

* Multiple deduct values are scaled down from their algebraic sum to keep the model consistent with experimental data.

Percent of Deduct Values Based on Distress Mechanism

0.0 % Load 100.0 % Climate/Durability 0.0 % Other

BAKER AIRPORT

Branch: 56T

TAXIWAY

T-3

Length: 1,532 LF **Width:** 35 LF **Area:** 53,620 SF **Last Const. :** 2001 **Family:** ACRMU15
From: TAXIWAY T-2 **To:** RWY 12/30 **Surface:** AAC

Inspections

Samples Surveyed: 4 **Total Samples:** 13 **Last Inspection Date (RPA)** 9/3/2015 **PCI:** 75

Sample # 2 **Area:** 3869 SF

Distress Description	Severity	Quantity
WEATHERING	L	967 SF
LONGITUDINAL/TRANSVERSE CRACKING	L	140 LF
RAVELING	L	195 SF
RAVELING	M	107 SF
DEPRESSION	L	4 SF
SWELLING	L	3 SF

Sample # 4 **Area:** 3869 SF

Distress Description	Severity	Quantity
WEATHERING	L	967 SF
LONGITUDINAL/TRANSVERSE CRACKING	L	155 LF
RAVELING	L	195 SF
RAVELING	M	132 SF
PATCHING	L	1 SF

Sample # 8 **Area:** 4900 SF

Distress Description	Severity	Quantity
WEATHERING	L	967 SF
RAVELING	L	274 SF
LONGITUDINAL/TRANSVERSE CRACKING	L	47 LF
RAVELING	M	140 SF

Sample # 11 **Area:** 4900 SF

Distress Description	Severity	Quantity
WEATHERING	L	967 SF
LONGITUDINAL/TRANSVERSE CRACKING	L	94 LF
RAVELING	M	140 SF
RAVELING	L	49 SF

Extrapolated Distress Quantities*

Distress Description	Severity	Quantity	Density	Deduct
RAVELING	M	1587 SF	2.96 %	12.17
LONGITUDINAL/TRANSVERSE CRACKING	L	1333 LF	2.49 %	8.70
RAVELING	L	2180 SF	4.07 %	6.06
WEATHERING	L	11826 SF	22.05 %	3.00
PATCHING	L	3 SF	0.01 %	2.00
SWELLING	L	9 SF	0.02 %	1.00
DEPRESSION	L	12 SF	0.02 %	0.30

* Multiple deduct values are scaled down from their algebraic sum to keep the model consistent with experimental data.

Percent of Deduct Values Based on Distress Mechanism

0.0 % Load 96.0 % Climate/Durability 4.0 % Other

BAKER AIRPORT**FIFTEEN YEAR PROJECTIONS: ESTIMATED AVERAGE ANNUAL COST: \$214,508**

PLAN YEAR: 2016			ESTIMATED COST:			\$154,151	PCI	
SectionID	Maintenance	Local	Global	Major<Crit	Major>Crit	Total	before	after
T-4	Prev. & Seal Coat	\$4,782	\$12,716			\$17,498	64	68
T-1	Prev. & Seal Coat	\$1,661	\$9,450			\$11,111	70	75
A-5	Prev. & Seal Coat	\$6,558	\$11,200			\$17,758	59	64
T-2	Prev. & Seal Coat	\$5,708	\$38,416			\$44,124	72	77
A-2A	Prev. & Seal Coat	\$13,020	\$33,600			\$46,620	64	69
T-3	Prev. & Seal Coat	\$2,026	\$15,014			\$17,040	73	78

PLAN YEAR: 2017			ESTIMATED COST:			\$169,019	PCI	
SectionID	Maintenance	Local	Global	Major<Crit	Major>Crit	Total	before	after
T-1	Basic Prev.	\$1,391				\$1,391	72	73
T-4	Basic Prev.	\$4,014				\$4,014	66	67
T-5	Seal Coat		\$13,223			\$13,223	91	98
R-1	Prev. & Seal Coat	\$707	\$105,987			\$106,694	88	95
A-5	Basic Prev.	\$5,542				\$5,542	62	62
A-2A	Basic Prev.	\$10,482				\$10,482	67	67
T-2	Basic Prev.	\$4,506				\$4,506	75	75
R-2	Seal Coat		\$21,630			\$21,630	93	100
T-3	Basic Prev.	\$1,537				\$1,537	76	76

PLAN YEAR: 2018			ESTIMATED COST:			\$34,963	PCI	
SectionID	Maintenance	Local	Global	Major<Crit	Major>Crit	Total	before	after
A-5	Basic Prev.	\$6,760				\$6,760	59	60
T-4	Basic Prev.	\$4,987				\$4,987	65	65
A-2A	Basic Prev.	\$13,469				\$13,469	64	65
T-2	Basic Prev.	\$5,922				\$5,922	72	72
T-3	Basic Prev.	\$2,095				\$2,095	73	73
T-1	Basic Prev.	\$1,730				\$1,730	70	71

PLAN YEAR: 2019			ESTIMATED COST:			\$44,166	PCI	
SectionID	Maintenance	Local	Global	Major<Crit	Major>Crit	Total	before	after
A-5	Basic Prev.	\$8,451				\$8,451	57	57
A-2A	Basic Prev.	\$16,640				\$16,640	62	62
R-1	Basic Prev.	\$686				\$686	88	88
T-3	Basic Prev.	\$2,657				\$2,657	71	71
T-2	Basic Prev.	\$7,340				\$7,340	70	70
T-1	Basic Prev.	\$2,412				\$2,412	68	69
T-4	Basic Prev.	\$5,980				\$5,980	63	63

PLAN YEAR: 2020			ESTIMATED COST:			\$56,505	PCI	
SectionID	Maintenance	Local	Global	Major<Crit	Major>Crit	Total	before	after
R-2	Basic Prev.	\$31				\$31	90	90
T-5	Basic Prev.	\$114				\$114	88	88
T-4	Basic Prev.	\$7,013				\$7,013	61	61
A-5	Basic Prev.	\$10,319				\$10,319	55	55
T-2	Basic Prev.	\$10,346				\$10,346	68	68
T-3	Basic Prev.	\$3,524				\$3,524	69	69
A-2A	Basic Prev.	\$20,057				\$20,057	60	60
T-1	Basic Prev.	\$3,195				\$3,195	67	67
R-1	Basic Prev.	\$1,906				\$1,906	85	86

PLAN YEAR: 2021			ESTIMATED COST:			\$211,457	PCI	
SectionID	Maintenance	Local	Global	Major<Crit	Major>Crit	Total	before	after
R-1	Basic Prev.	\$3,143				\$3,143	83	83
T-1	Prev. & Seal Coat	\$3,983	\$10,955			\$14,938	65	69
A-2A	Prev. & Seal Coat	\$25,207	\$38,952			\$64,159	58	63
T-3	Prev. & Seal Coat	\$4,811	\$17,405			\$22,216	67	71
T-2	Prev. & Seal Coat	\$13,599	\$44,535			\$58,134	66	71
A-5	Prev. & Seal Coat	\$12,395	\$12,984			\$25,379	52	58
T-4	Prev. & Seal Coat	\$8,190	\$14,742			\$22,931	60	63
T-5	Basic Prev.	\$270				\$270	85	85
R-2	Basic Prev.	\$287				\$287	87	87

PLAN YEAR: 2022			ESTIMATED COST:			\$225,135	PCI	
SectionID	Maintenance	Local	Global	Major<Crit	Major>Crit	Total	before	after
R-1	Prev. & Seal Coat	\$4,423	\$122,868			\$127,291	80	86
A-2A	Basic Prev.	\$20,863				\$20,863	60	61
T-2	Basic Prev.	\$10,633				\$10,633	69	69
T-1	Basic Prev.	\$3,309				\$3,309	67	67
R-2	Prev. & Seal Coat	\$549	\$25,075			\$25,624	84	90
A-5	Basic Prev.	\$10,704				\$10,704	55	55
T-3	Basic Prev.	\$3,611				\$3,611	69	69
T-5	Prev. & Seal Coat	\$427	\$15,329			\$15,757	82	88
T-4	Basic Prev.	\$7,343				\$7,343	61	62

PLAN YEAR: 2023			ESTIMATED COST:			\$74,441	PCI	
SectionID	Maintenance	Local	Global	Major<Crit	Major>Crit	Total	before	after
T-2	Basic Prev.	\$14,090				\$14,090	67	67
A-5	Basic Prev.	\$12,884				\$12,884	53	53
T-4	Basic Prev.	\$8,538				\$8,538	60	60
R-2	Basic Prev.	\$276				\$276	87	87
A-2A	Basic Prev.	\$26,057				\$26,057	58	58
T-1	Basic Prev.	\$4,151				\$4,151	65	65
T-3	Basic Prev.	\$4,972				\$4,972	67	68
T-5	Basic Prev.	\$269				\$269	85	85
R-1	Basic Prev.	\$3,204				\$3,204	83	83

PLAN YEAR: 2024			ESTIMATED COST:			\$331,630	PCI	
SectionID	Maintenance	Local	Global	Major<Crit	Major>Crit	Total	before	after
T-3	Basic Prev.	\$6,358				\$6,358	66	66
A-2A	Basic Prev.	\$32,150				\$32,150	56	56
A-5	Reconstruct			\$254,722		\$254,722	50	100
T-1	Basic Prev.	\$5,011				\$5,011	63	63
T-2	Basic Prev.	\$17,624				\$17,624	65	65
T-4	Basic Prev.	\$10,235				\$10,235	58	58
T-5	Basic Prev.	\$438				\$438	82	83
R-1	Basic Prev.	\$4,537				\$4,537	80	80
R-2	Basic Prev.	\$555				\$555	84	84

PLAN YEAR: 2025			ESTIMATED COST:			\$96,441	PCI	
SectionID	Maintenance	Local	Global	Major<Crit	Major>Crit	Total	before	after
T-4	Basic Prev.	\$12,070				\$12,070	56	57
T-2	Basic Prev.	\$21,213				\$21,213	63	63
R-2	Basic Prev.	\$836				\$836	81	82
T-5	Basic Prev.	\$639				\$639	80	80
T-1	Basic Prev.	\$5,896				\$5,896	62	62
R-1	Basic Prev.	\$9,128				\$9,128	78	78
T-3	Basic Prev.	\$7,766				\$7,766	64	64
A-2A	Basic Prev.	\$38,893				\$38,893	53	54

PLAN YEAR: 2026			ESTIMATED COST:			\$265,066	PCI	
SectionID	Maintenance	Local	Global	Major<Crit	Major>Crit	Total	before	after
A-2A	Prev. & Seal Coat	\$46,446	\$45,156			\$91,601	51	56
T-4	Prev. & Seal Coat	\$14,081	\$17,090			\$31,170	55	58
R-1	Basic Prev.	\$14,105				\$14,105	75	75
T-2	Prev. & Seal Coat	\$24,910	\$51,628			\$76,538	61	65
T-1	Prev. & Seal Coat	\$6,831	\$12,700			\$19,531	60	64
T-5	Basic Prev.	\$1,271				\$1,271	77	77
T-3	Prev. & Seal Coat	\$9,209	\$20,177			\$29,386	62	66
R-2	Basic Prev.	\$1,464				\$1,464	79	79

PLAN YEAR: 2027			ESTIMATED COST:			\$302,390	PCI	
SectionID	Maintenance	Local	Global	Major<Crit	Major>Crit	Total	before	after
T-4	Basic Prev.	\$12,617				\$12,617	57	57
T-3	Basic Prev.	\$8,105				\$8,105	64	64
T-5	Prev. & Seal Coat	\$1,906	\$17,771			\$19,677	75	80
T-1	Basic Prev.	\$6,171				\$6,171	62	62
R-2	Prev. & Seal Coat	\$2,520	\$29,069			\$31,589	76	82
T-2	Basic Prev.	\$22,164				\$22,164	63	63
A-2A	Basic Prev.	\$40,390				\$40,390	54	54
R-1	Prev. & Seal Coat	\$19,084	\$142,438			\$161,522	73	78
A-5	Basic Prev.	\$155				\$155	87	87

PLAN YEAR: 2028			ESTIMATED COST:			\$123,533	PCI	
SectionID	Maintenance	Local	Global	Major<Crit	Major>Crit	Total	before	after
R-1	Basic Prev.	\$14,482				\$14,482	76	76
T-4	Basic Prev.	\$14,744				\$14,744	55	55
T-5	Basic Prev.	\$1,286				\$1,286	78	78
T-3	Basic Prev.	\$9,640				\$9,640	62	62
T-1	Basic Prev.	\$7,150				\$7,150	60	60
A-5	Basic Prev.	\$350				\$350	84	84
R-2	Basic Prev.	\$1,441				\$1,441	79	79
T-2	Basic Prev.	\$26,115				\$26,115	62	62
A-2A	Basic Prev.	\$48,325				\$48,325	51	51

PLAN YEAR: 2029			ESTIMATED COST:			\$1,016,726	PCI	
SectionID	Maintenance	Local	Global	Major<Crit	Major>Crit	Total	before	after
T-3	Basic Prev.	\$11,237				\$11,237	61	61
R-1	Basic Prev.	\$19,795				\$19,795	73	73
T-4	Basic Prev.	\$17,097				\$17,097	53	53
T-5	Basic Prev.	\$1,963				\$1,963	75	75
R-2	Basic Prev.	\$2,564				\$2,564	77	77
T-2	Basic Prev.	\$30,223				\$30,223	60	60
A-2A	Reconstruct			\$924,737		\$924,737	48	100
A-5	Basic Prev.	\$538				\$538	81	81
T-1	Basic Prev.	\$8,572				\$8,572	58	59

PLAN YEAR: 2030			ESTIMATED COST:			\$111,993	PCI	
SectionID	Maintenance	Local	Global	Major<Crit	Major>Crit	Total	before	after
T-4	Basic Prev.	\$19,763				\$19,763	51	51
T-1	Basic Prev.	\$10,131				\$10,131	57	57
A-5	Basic Prev.	\$1,079				\$1,079	78	78
T-3	Basic Prev.	\$13,286				\$13,286	59	59
T-5	Basic Prev.	\$2,641				\$2,641	73	73
R-2	Basic Prev.	\$3,694				\$3,694	74	74
R-1	Basic Prev.	\$25,103				\$25,103	71	71
T-2	Basic Prev.	\$36,296				\$36,296	58	58