

MISSOULA URBANIZED AREA

MISSOULA COUNTY

Urbanized Area from
UA 2010 Census Tiger Files



* Off system departmental designations are preceded by L-56- for routes outside city limits, unless labeled otherwise

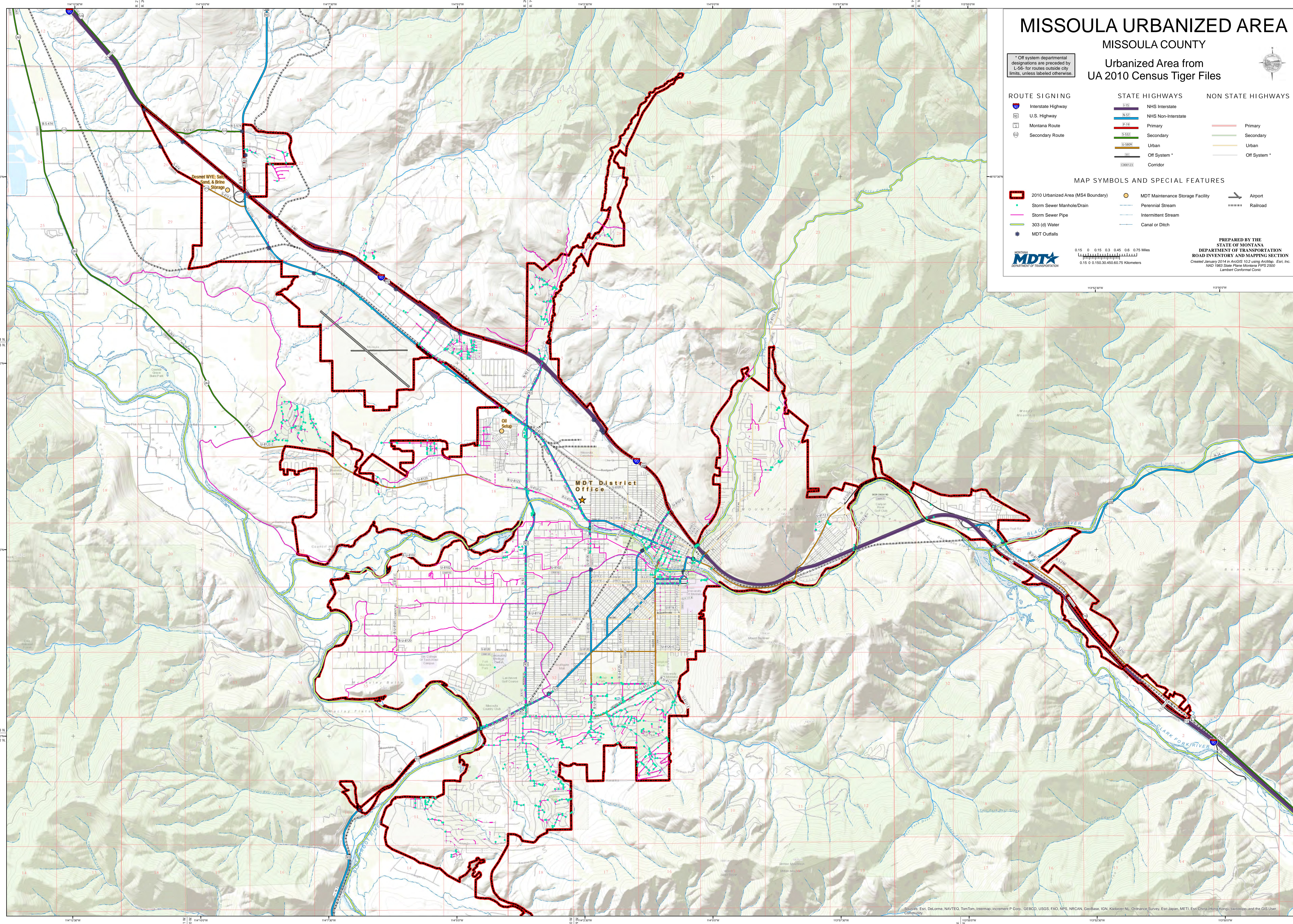
ROUTE SIGNING		STATE HIGHWAYS		NON STATE HIGHWAYS	
	Interstate Highway		NHS Interstate		Primary
	U.S. Highway		NHS Non-Interstate		Secondary
	Montana Route		Urban		Urban
	Secondary Route		Off System *		Off System *

MAP SYMBOLS AND SPECIAL FEATURES					
	2010 Urbanized Area (MS4 Boundary)		MDT Maintenance Storage Facility		Airport
	Storm Sewer Manhole/Drain		Perennial Stream		Railroad
	Storm Sewer Pipe		Intermittent Stream		
	303 (d) Water		Canal or Ditch		
	MDT Outfalls				



PREPARED BY THE
STATE OF MONTANA
DEPARTMENT OF TRANSPORTATION
ROAD INVENTORY AND MAPPING SECTION
Created January 2014 in ArcGIS 10.2 using ArcMap, Esri, Inc.
NAD 1983 State Plane Montana FIPS 2800
Lambert Conformal Conic

0.15 0 0.15 0.3 0.45 0.6 0.75 Miles
0.15 0 0.15 0.3 0.45 0.6 0.75 Kilometers



Sources: Esri, DeLorme, NAVTEQ, TomTom, Intermap, increment P Corp., GEBCO, USGS, FAO, NPS, NRCAN, GeoBase, IGN, Kadaster NL, Ordnance Survey, Esri Japan, METI, Esri China (Hong Kong), Swisstopo, and the GIS User Community