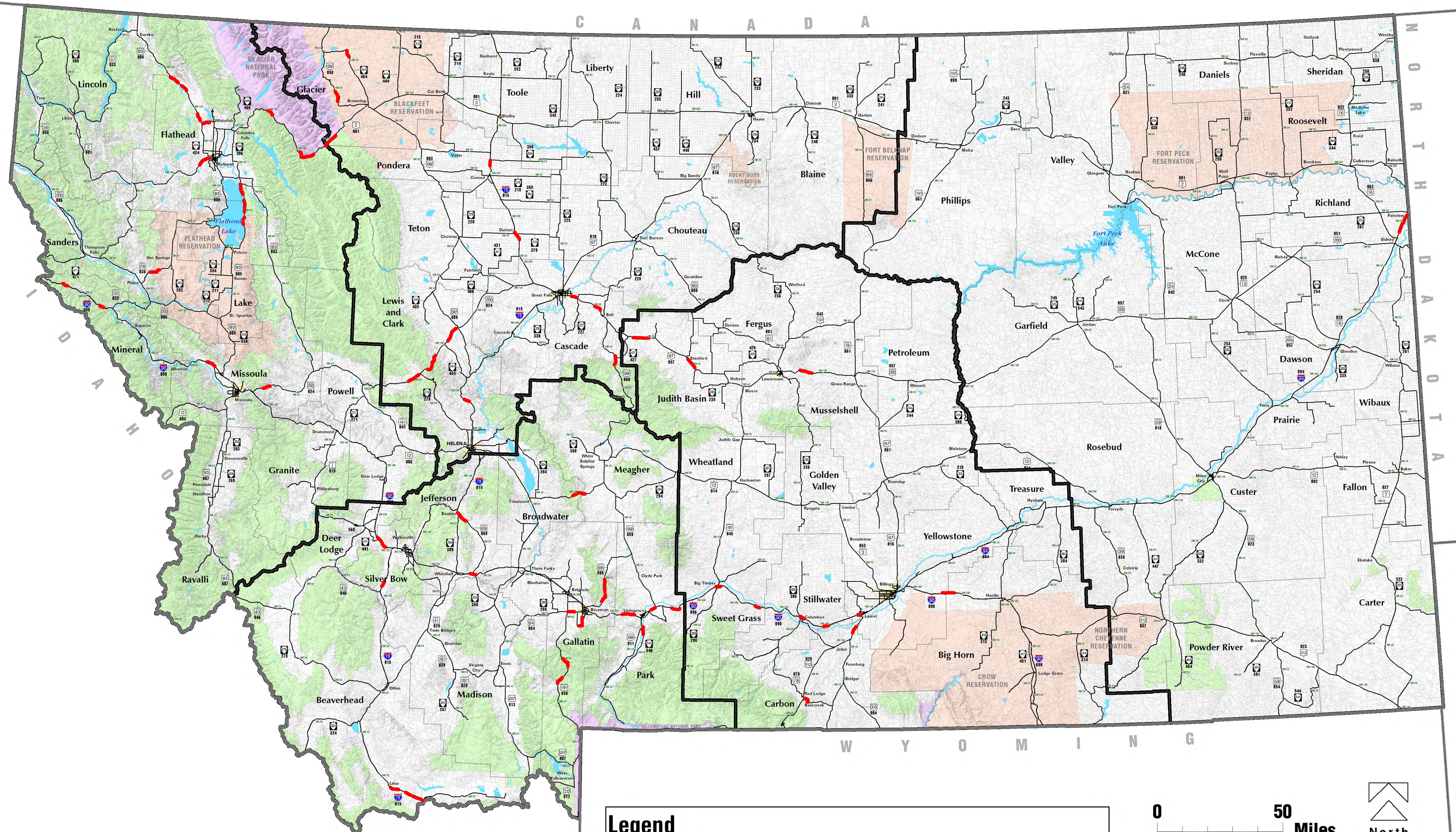


# Roadway Departure Safety Implementation Plan

## SNOW, SLEET, OR HAIL CRASH PATTERNS



Map prepared May, 2014 by Felsburg Holt & Ullevig in coordination with DiExSys. Snow, sleet or hail crash patterns were determined through modeling produced/revised in May, 2014 by DiExSys™. Map produced in ESRI ArcMap 10.2 ©. Land jurisdiction and highway information provided by MDT. Hillshade provided by USGS. Mapped using lookup table (provided by MDT) for conversion between reference marker (RM) and true distance (DCMI) linear referencing systems. Map reduced from 34"x44".

Legend	
	Snow, Sleet, or Hail Crash Patterns
	Forest Service Lands
	County Boundaries
	National Parks
	Reservations
	MDT Districts

