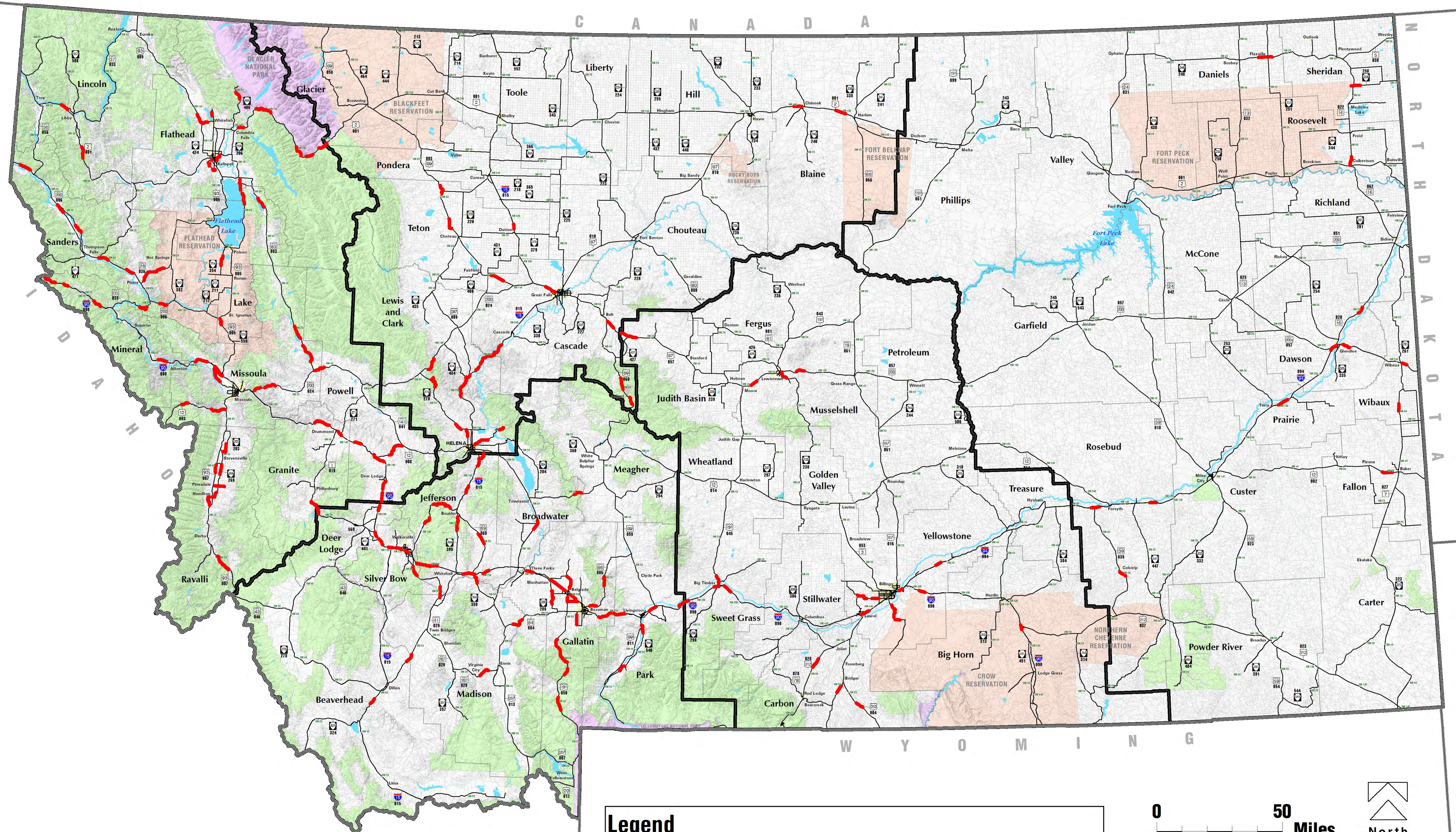


Roadway Departure Safety Implementation Plan

TOTAL FIXED OBJECTS CRASH PATTERNS



Map prepared May, 2014 by Felsburg Holt & Ullevig in coordination with DiExSys. Fixed objects crash patterns were determined through modeling produced/ revised in May, 2014 by DiExSys™. Map produced in ESRI ArcMap 10.2 ©. Land jurisdiction and highway information provided by MDT Hillshade provided by USGS. Mapped using lookup table (provided by MDT) for conversion between reference marker (RM) and true distance (DCMI) linear referencing systems. Map reduced from 34"x44".

Legend

- Total Fixed Objects Crash Patterns
- Forest Service Lands
- County Boundaries
- National Parks
- Reservations
- MDT Districts

