



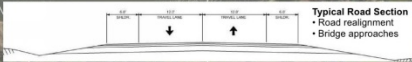
South Avenue Bridge

Project Status Update Meeting
January 14, 2016



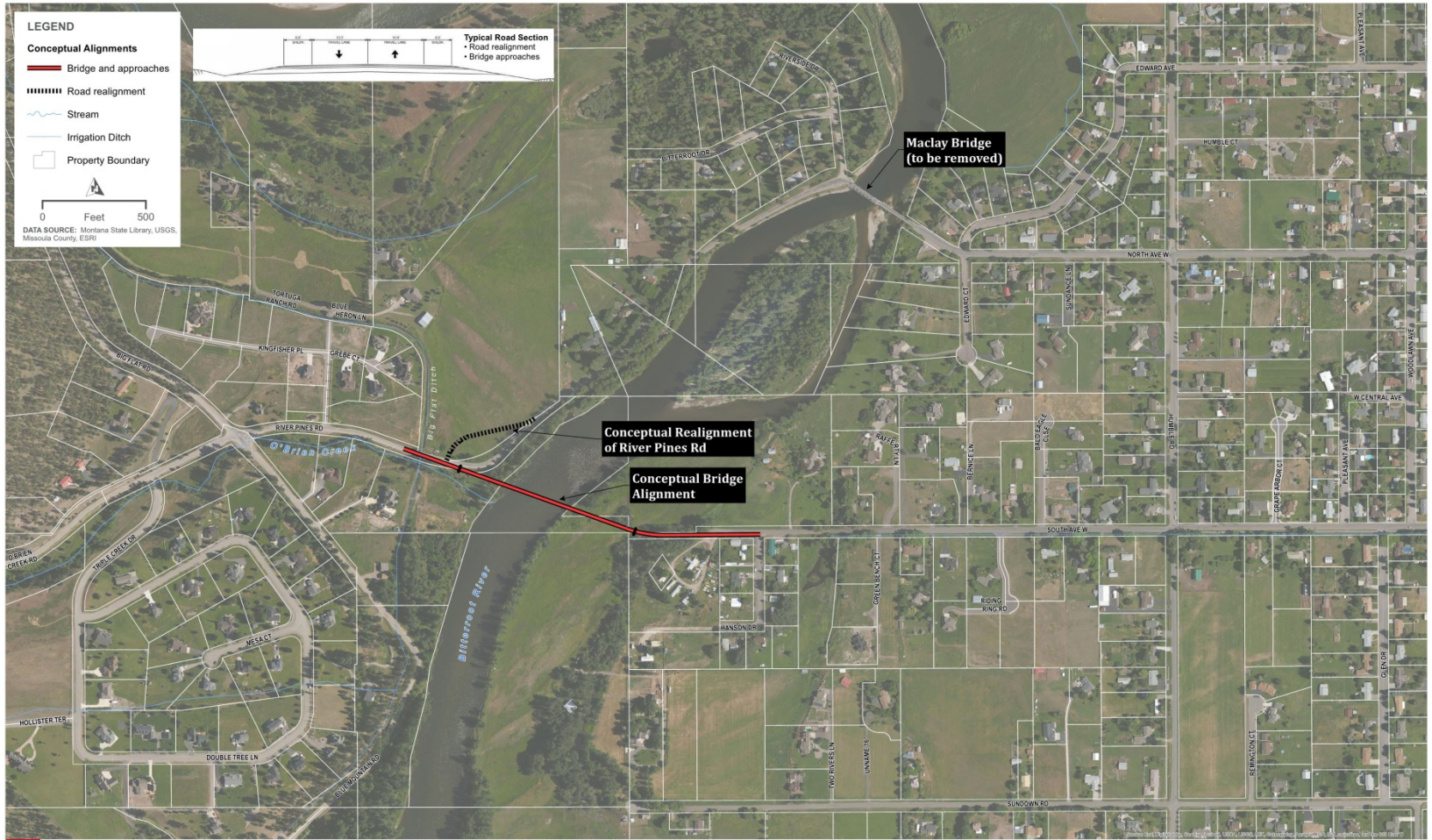
LEGEND

- Conceptual Alignments
 - Bridge and approaches
 - Road realignment
- Stream
- Irrigation Ditch
- Property Boundary



0 Feet 500

DATA SOURCE: Montana State Library, USGS, Missoula County, ESRI



SOUTH AVENUE BRIDGE PROJECT
PROJECT AREA MAP



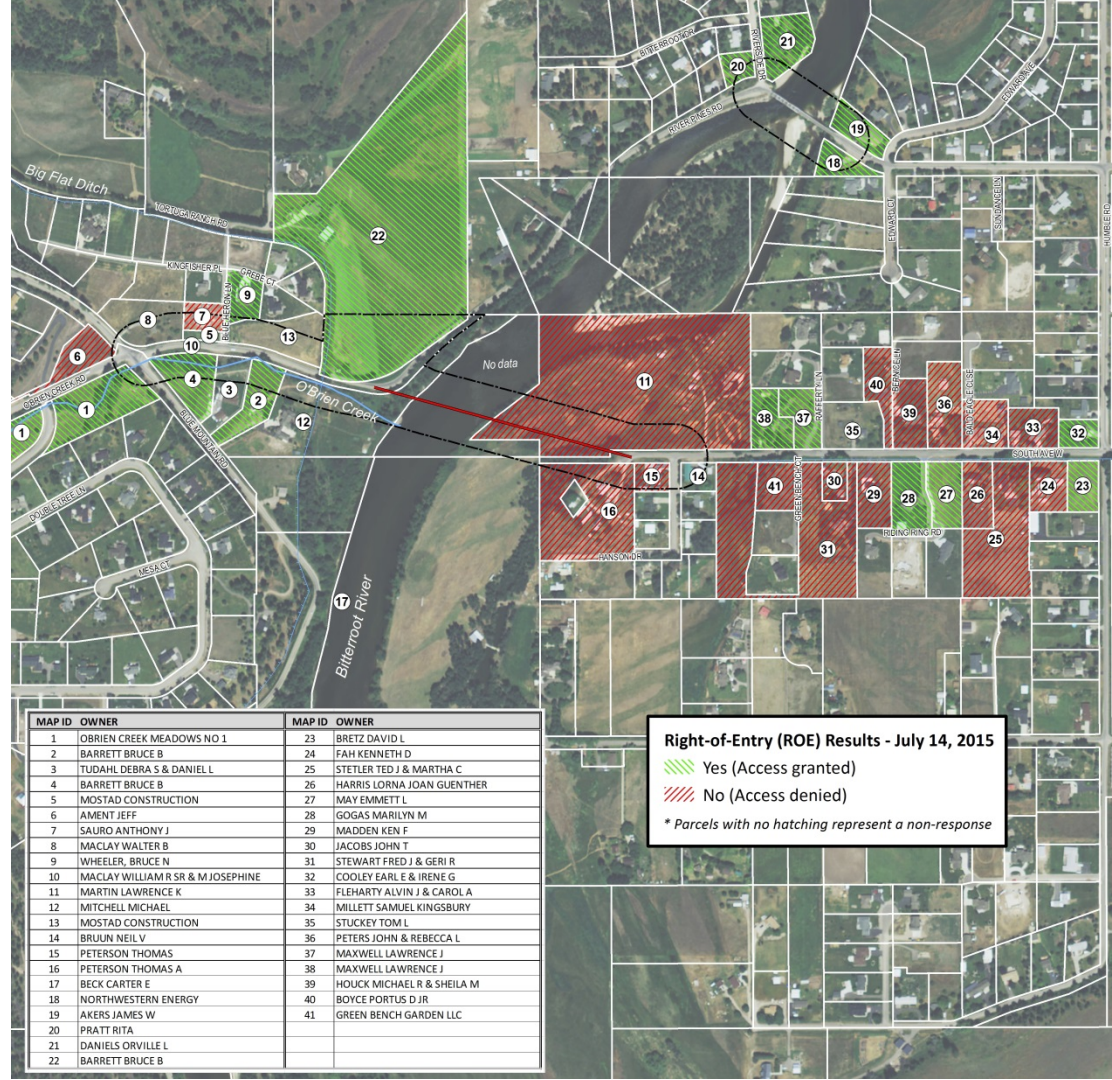
Project Schedule

As of January 2016

- Topographic Survey completed
- Right-of-way Property Corner Survey (at all legally accessible locations) under way
- Geotechnical Drilling completed
- Cultural Resources study under way
- Existing Maclay Bridge Architectural Review completed
- Hydrology Study completed
- Hydraulics model development under way
- Environmental Review under way

Right-of-Entry Results

- Right-of-Entry (ROE) request letters sent in June 2015
- ROE denied for majority of properties located along South Avenue



Hydraulics & Hydrology Evaluation

- Hydrology Study is completed
- FEMA hydraulic model received and updated
- Currently updating hydraulic model with current survey information
- Bridge span and pier openings will be sized based on hydraulic requirements



Geotechnical

- Tetra Tech drilled two holes within legal rights-of-way
- Encountered about 70 to 80 feet of loose to medium dense sand with intermixed seams of gravel, overlying dense gravel extending from 80 to 110 feet
- Geotechnical Report is currently under development



Public Involvement and Stakeholder Coordination

- Follows approximately a “Level C” Public Involvement Plan (per 2015 MDT PI Handbook)
- 3 Public Informational Meetings scoped
 - Meeting #1 – Sep. 22, 2015 (COMPLETE)
 - Meeting #2 – Mid March 2016 (tentatively)
 - Meeting #3 – October 2016 (tentatively)
- Stakeholder/Neighborhood Meetings
 - Up to 12 meetings scoped
- Technical Design Committee (TDC) Meetings
 - Composition currently being developed
 - Up to 8 TDC meetings
- Preliminary Resource Agency Meeting
- Newsletters, Mailings, and Project Website
 - www.southavenuebridge.com

NEPA/MEPA Documentation and Process

- Cultural Resources / Section 106 Compliance
- Biological Resource Report / Biological Assessment
- Noise Analysis
- Environmental Document
- Section 4(f) Evaluation
- Other Resources



Cultural Resources

- Historical Research Associates (HRA) conducted reconnaissance-level architectural survey
- Archaeological survey to be completed when legal access is provided
- Included a Historic American Engineering Record (HAER) Level II documentation of Maclay Bridge
- Three parcels with historic-era structures within APE evaluated
 - The Maclay House (24MO0519) determined NRHP-eligible
 - No adverse effect recommendation

Anticipated Deliverable Date: February 2016



Biological Resource Report / Biological Assessment

- Fieldwork conducted on October 6 and 8, 2015
 - Wetland verification (where possible)
 - Instream habitat characterization
 - Vegetation inventory
- ESA consultation required for:
 - Bull trout and designated critical habitat
 - Yellow-billed cuckoo (YBC)
- Need to strategize on ESA consultation prior to moving forward with BA
 - YBC playback surveys “recommended” by Service one year prior to construction
 - Informal or formal for YBC? If formal, no surveys?
 - Work windows for both species conflict

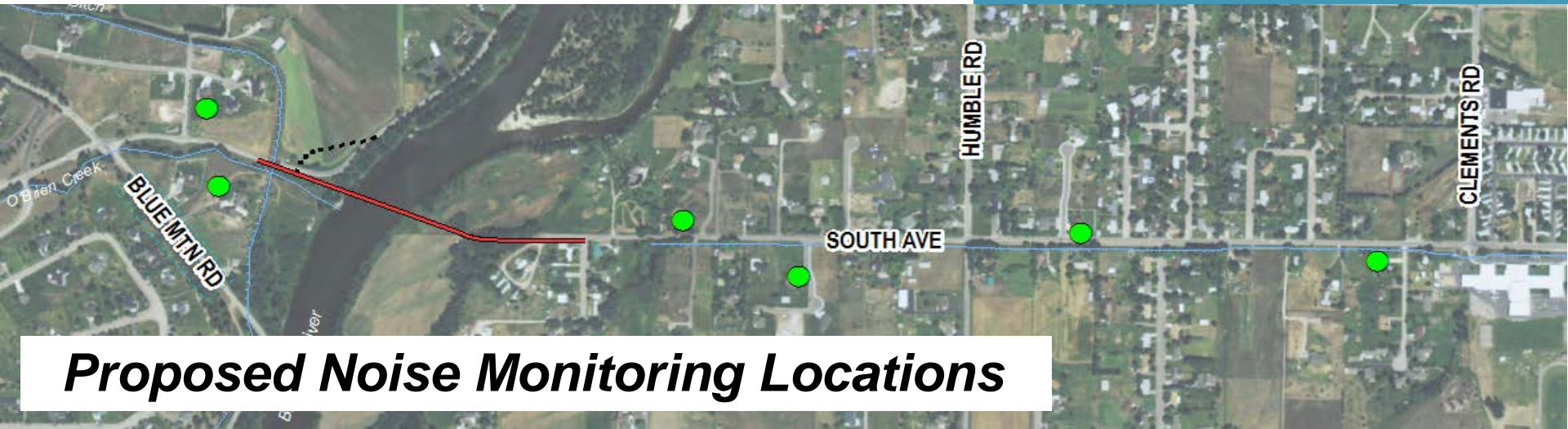


*Anticipated Deliverable Date:
April 2016*

Noise Analysis

- Noise monitoring and analysis added to scope and planned (weather permitting)
- Consistent with MDT Activity 109
 - MDT Traffic Noise Analysis and Abatement Policy
 - FHWA Traffic Noise Model (TNM), Version 2.5
- Monitoring locations proposed between Humble Rd. and Clements Rd.

*Anticipated Deliverable Date:
April 2016*



Proposed Noise Monitoring Locations

Environmental Document

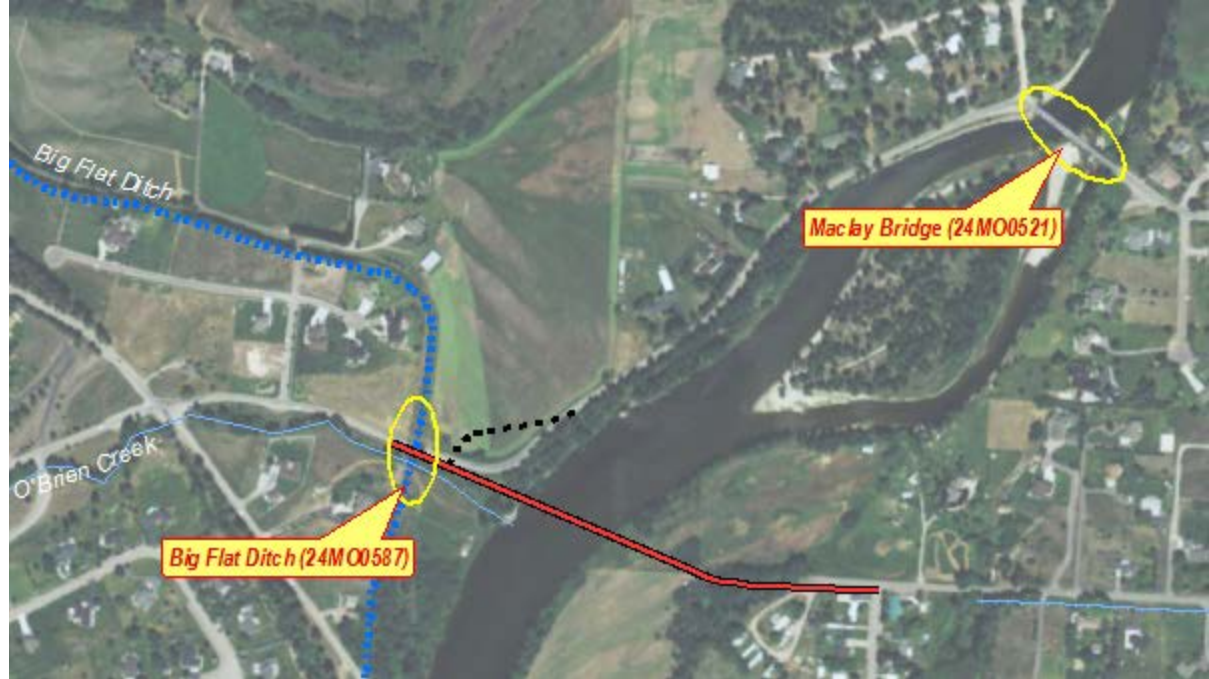
- Currently scoped to develop a Narrative CE(d)
- HDR scoped to submit Level of Environmental Document form (790 form)
- Other considerations:
 - Planning and Environmental Linkages (PEL) – MAP-21 §1310
 - Official adoption of 2012 Maclay Bridge Planning Study required?



*Anticipated Deliverable Date:
August 2016*

Section 4(f) Evaluation

- Currently two potential Section 4(f) properties potentially affected:
 - Maclay Bridge (24MO0521)
 - Big Flat Ditch (24MO0587)
- Programmatic Section 4(f) Evaluations anticipated
 - Nationwide Programmatic Agreement for FHWA Projects that Necessitate the Use of Historic Bridges
 - State Programmatic Agreement for Historic Ditches



*Anticipated Deliverable Date:
August 2016 (with E-doc submittal)*

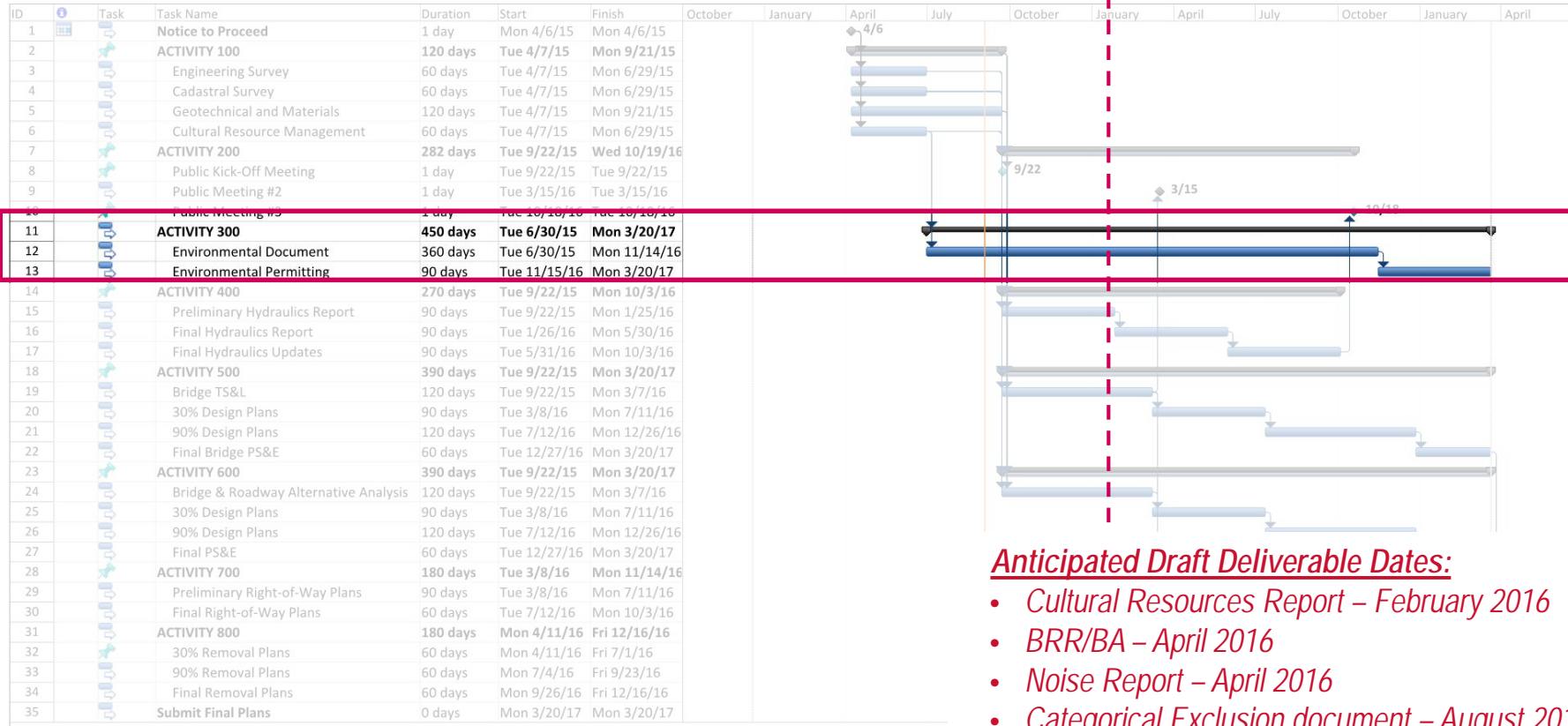
Other Resources / Analyses?

- Traffic analysis (not currently scoped)
- Hazardous materials
- Social impacts / Induced growth
- Visual resources / Aesthetics
- Indirect (Secondary) and Cumulative Impacts
- Other concerns?



Environmental Documentation Schedule

Current Time



Anticipated Draft Deliverable Dates:

- Cultural Resources Report – February 2016
- BRR/BA – April 2016
- Noise Report – April 2016
- Categorical Exclusion document – August 2016
- Section 4(f) Evaluation – August 2016