

Kalispell Bypass (US 93 Alternate)

Information Meeting

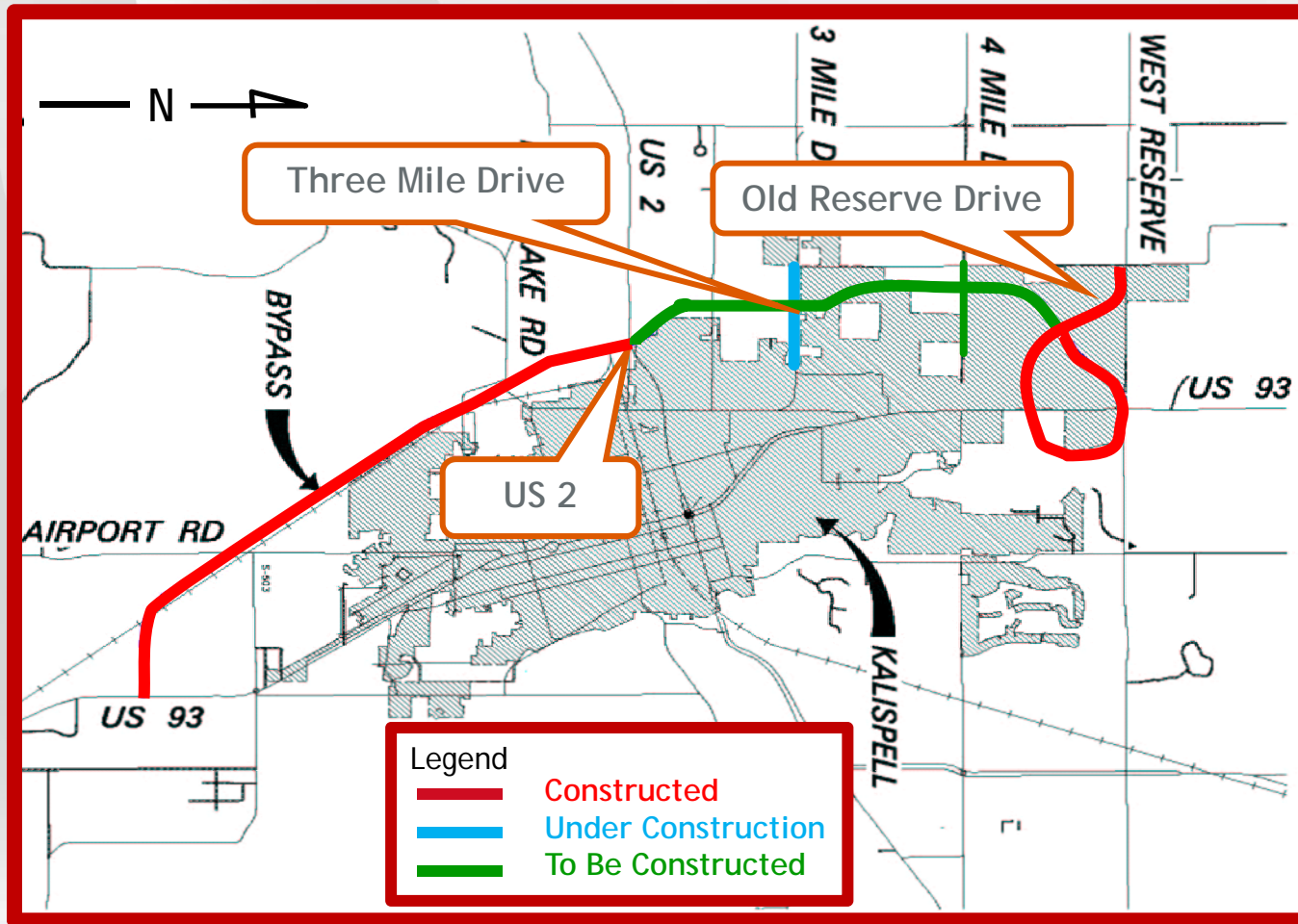
June 18, 2014



Presentation

- ◇ Introductions
- ◇ Purpose of Meeting
- ◇ Construction
 - ◇ Three Mile Drive: 2014 - 2015
 - ◇ Remaining Bypass: 2015 - 2017
- ◇ Parkridge Drive Closure
- ◇ Noise Walls
- ◇ Questions & Comments

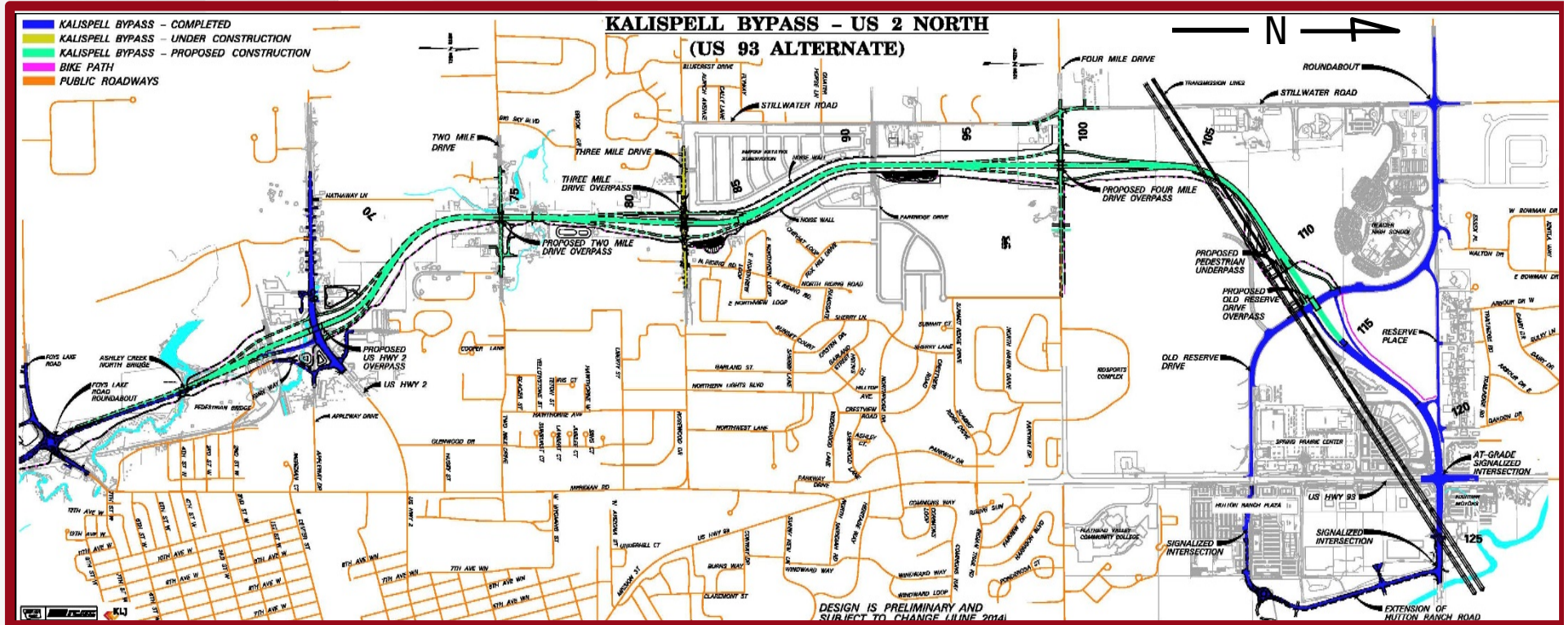
Kalispell Bypass - 8 Miles, 4-Lane, Alternate Route



Construction: Three Mile Drive



Northern Segment - To Be Constructed



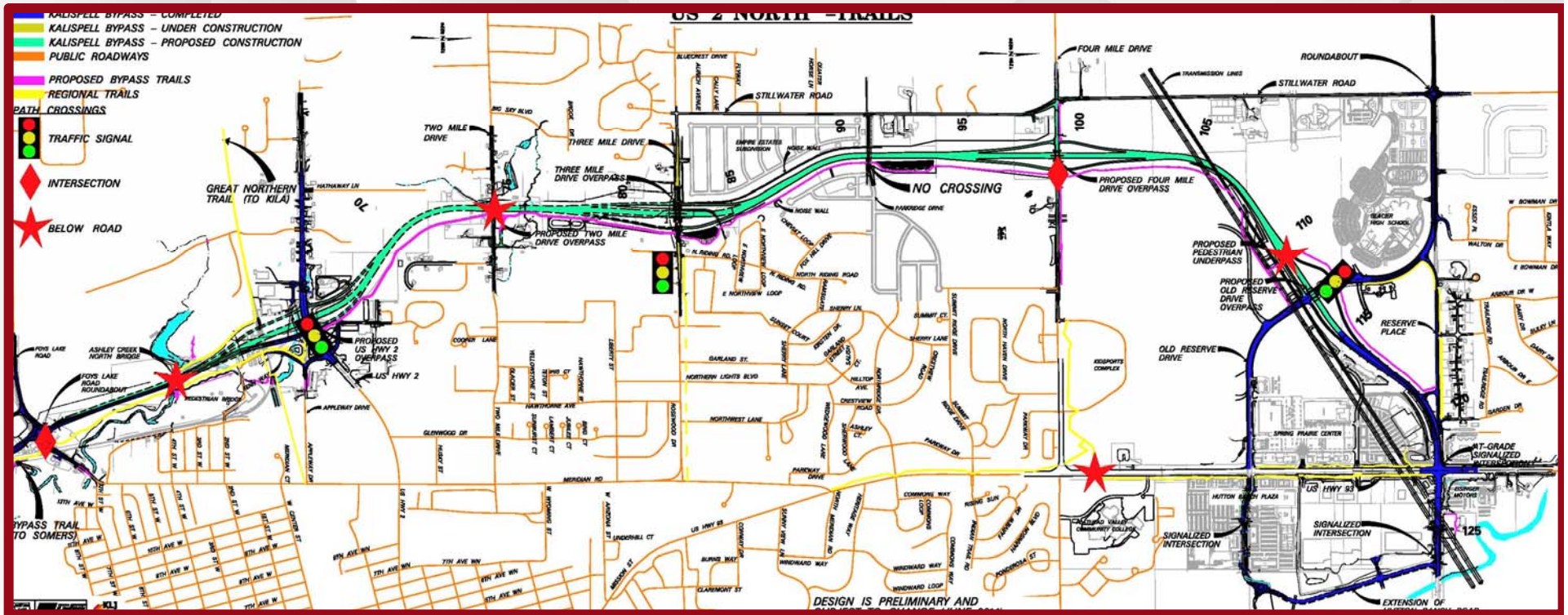
◇ 2015-2017:

- ◇ Bypass-US 2 to Three Mile Drive
- ◇ Three Mile Drive to Old Reserve Drive (Reserve Loop)

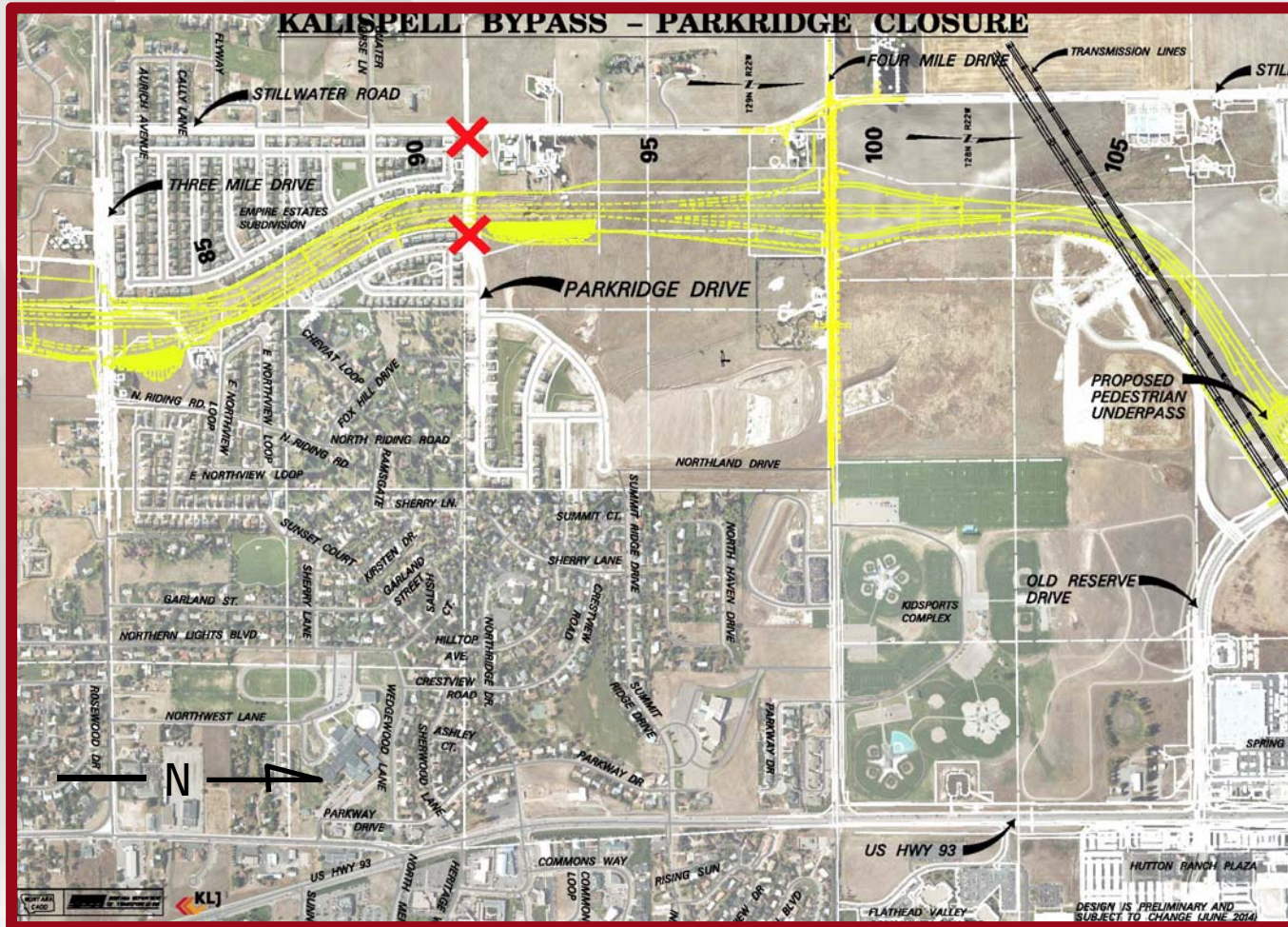
◇ 2015

- ◇ Four Mile Drive

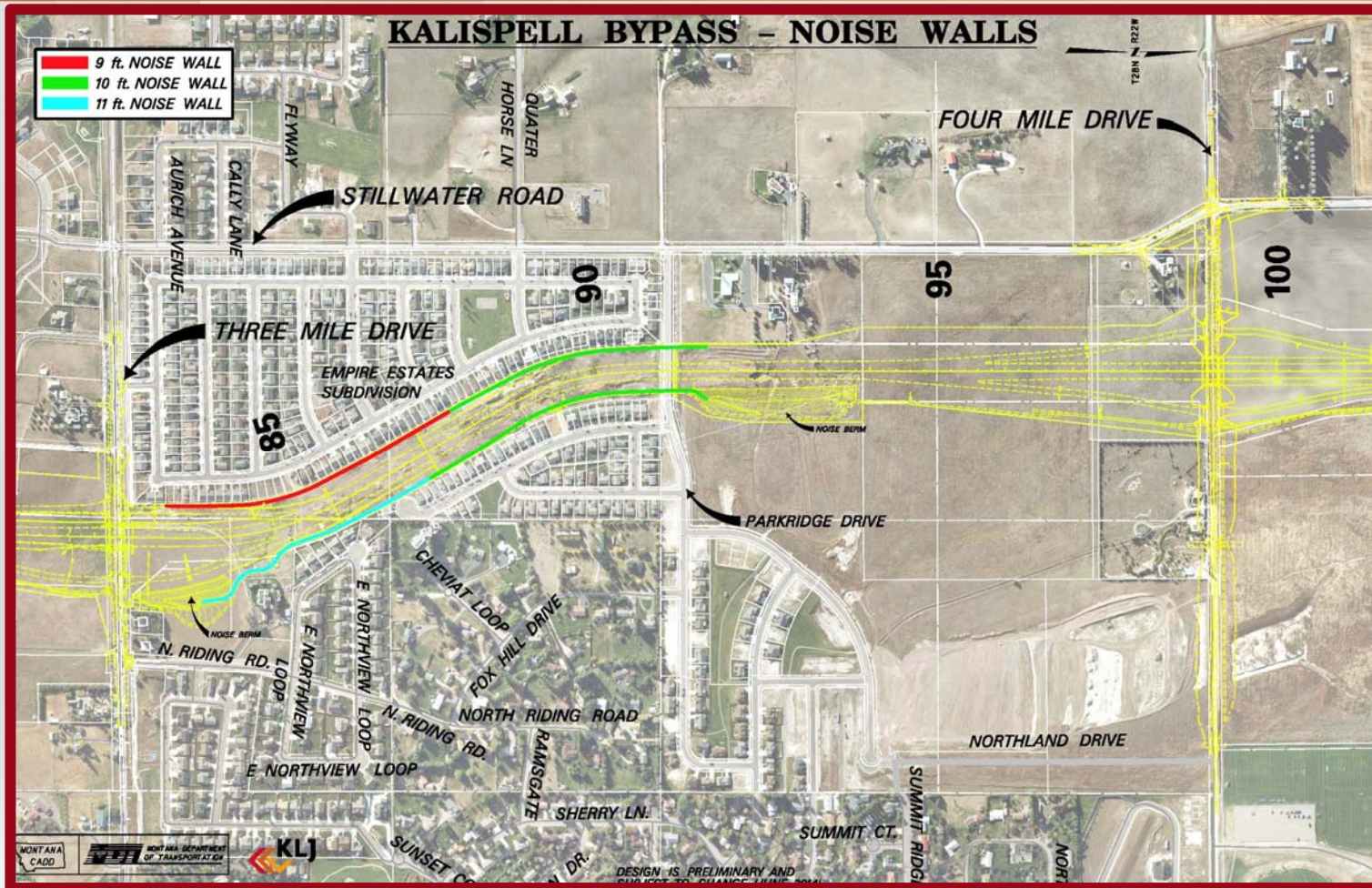
Trail Connections



Parkridge Drive Closure



Noise Wall Locations

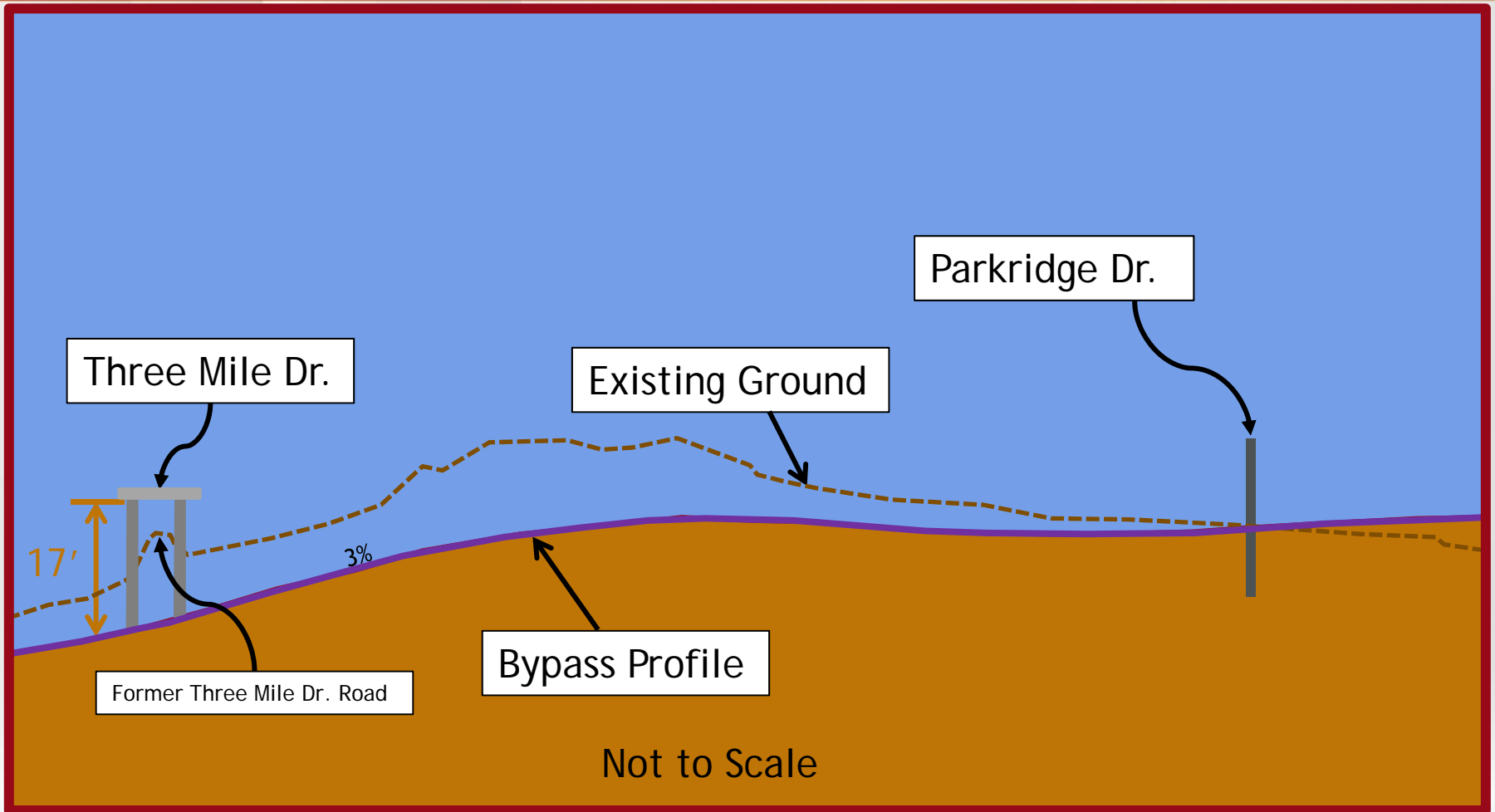


Noise Walls



- ◇ 9-11' Tall
 - ◇ Precast Concrete
 - ◇ Similar aesthetic pattern as previously constructed south wall.

Profile - Three Mile Drive to Parkridge



Questions and Comments

- ◇ www.kalispellbypass.com

- ◇ Ed Toavs
 - ◇ Missoula District Administrator
 - ◇ etoavs@mt.gov
 - ◇ 523-5802

- ◇ Bob Vosen
 - ◇ Missoula Construction Engineer
 - ◇ rvosen@mt.gov
 - ◇ 751-2020