

MISSOULA BRIDGES PLANNING STUDY

STUDY DESCRIPTION

The Montana Department of Transportation (MDT) has initiated the Missoula Bridges Planning Study to identify potential bridge improvement options for the Higgins Avenue and Madison Street Bridges.

The study will define short-, mid-, and long-term improvement options based on the needs and objectives for the bridges, including:

- rehabilitation/repair work that must be accomplished for structural integrity;
- cost of rehabilitation/repair work and available funding;
- needs and objectives for the bridges which incorporate community goals;
- prioritization of work to be completed in the short-term;
- timeline for any remaining improvements (including potential long-term bridge replacement); and
- potential traffic routes or configurations during construction.

This study is a planning-level evaluation of the two bridges. It is not a design, maintenance, or construction project, or a lane configuration study for Higgins Avenue. Depending on need and funding availability, improvement options may be forwarded from this study and developed into projects at a later date.



INSIDE THIS ISSUE

Study Description ... 1
 Study Area..... 2
 Existing Conditions 3
 Study Contacts 4
 Involvement
 Opportunities..... 4

**PLEASE JOIN US
FOR AN
INFORMATIONAL
MEETING!**

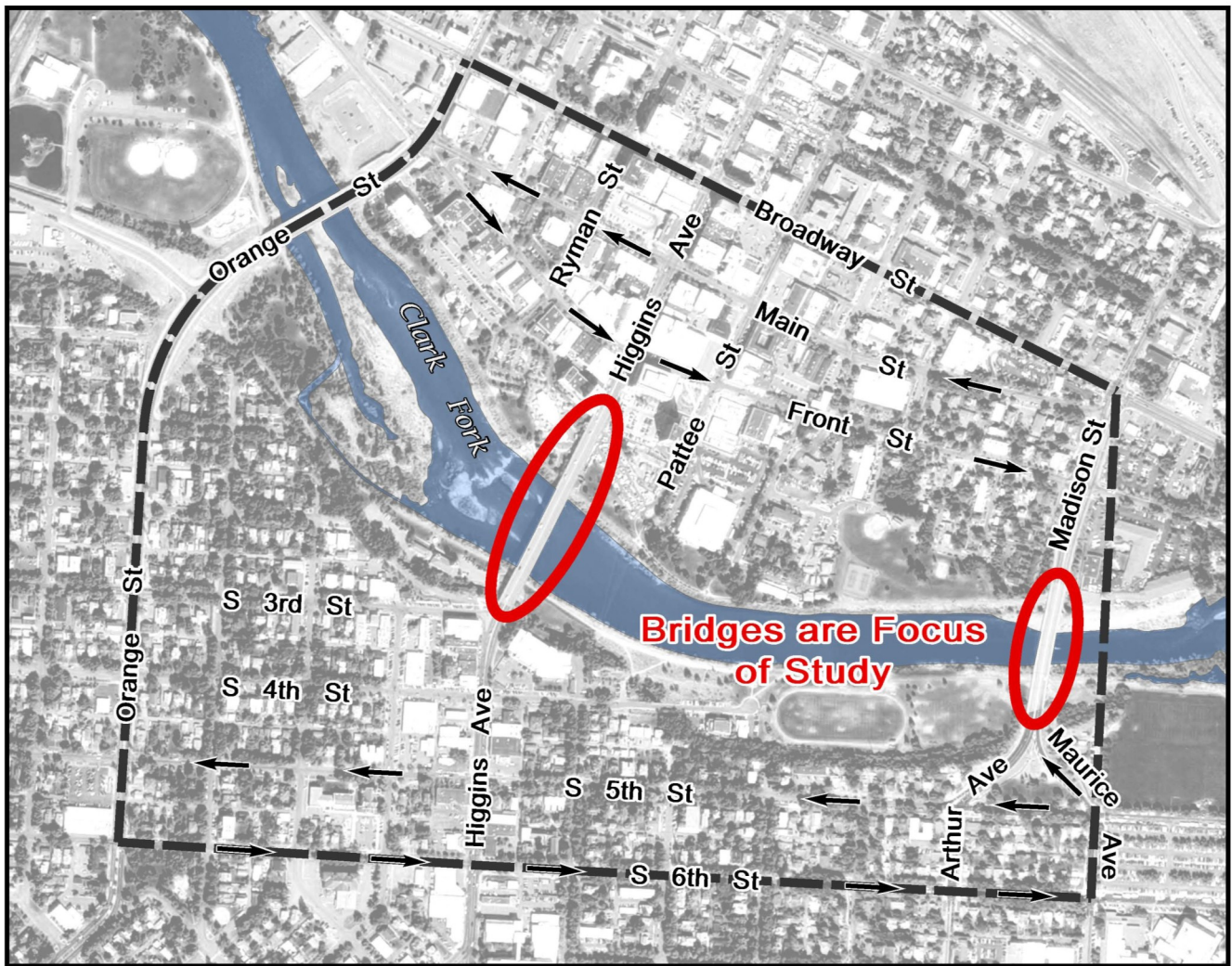
**Wednesday,
June 12, 2013**

Missoula Senior Center
705 S. Higgins Avenue
6:00 p.m. to 8:00 p.m.



STUDY AREA

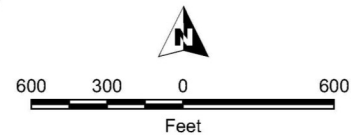
The study is focused on the Higgins Avenue and Madison Street Bridges. The study will also consider traffic impacts that may result from forwarded bridge improvement options within the area bounded by Broadway Street to the north, Orange Street to the west, South 6th Street to the south, and an eastern boundary extending from the intersections of Madison Street/Broadway Street and Maurice Avenue/South 6th Street.



Missoula Bridges Planning Study

LEGEND

Study Area Boundary



EXISTING AND PROJECTED CONDITIONS

Findings presented in the tables below are drawn from the draft existing and projected conditions report and the draft environmental scan report for this study. Please visit the study website (<http://www.mdt.mt.gov/pubinvolve/missoulabridges>) to view the full reports.

Bridge Element	Finding
Structural Status	<ul style="list-style-type: none"> The structure condition and deck condition of the Higgins Avenue and Madison Street Bridges is poor. The bridges are eligible for repair or replacement.
Seismic Hazard	<ul style="list-style-type: none"> The Higgins Avenue and Madison Street Bridges exhibit multiple seismic hazards.
Bicycle and Pedestrian Elements	<ul style="list-style-type: none"> Higgins Avenue and Madison Street bridge/ pedestrian railings do not meet current MDT design standards. Sidewalks and ramp transitions from the roadway sidewalks to the Higgins Avenue and Madison Street Bridge sidewalks do not meet accessibility requirements. Bicycle lane widths do not meet design guidelines.
Vehicular Operations	<ul style="list-style-type: none"> By 2040, the Higgins Avenue Bridge is projected to be congested and the Madison Street Bridge is projected to be congesting. Three study intersections are identified as congesting in the PM peak hour.

Environmental Resource	Constraints
Surface Waters, Wetlands, & Floodplain	<ul style="list-style-type: none"> The Clark Fork River is an impaired water body. Wetland areas, the Missoula Irrigation Ditch, and the 100-year floodplain for the Clark Fork River are located within the study area.
Threatened & Endangered	<ul style="list-style-type: none"> Bull trout (a federally-listed threatened species) may occur in the study area. The Clark Fork is designated critical habitat for the bull trout.
Species of Concern	<ul style="list-style-type: none"> Seventeen animal and plant species of concern may occur in study area vicinity.
Recreational Resources	<ul style="list-style-type: none"> Six parks and portions of the Ron MacDonald River Trail System are located within the study area.
Cultural Resources	<ul style="list-style-type: none"> Three historic districts and individually significant properties are located within the study area



STUDY CONTACTS

Shane Stack
MDT Missoula District
406-523-5830
sstack@mt.gov

Corrina Collins
MDT Project Manager
406-444-9131
ccollins@mt.gov

Sarah Nicolai
DOWL HKM
Project Manager
406-442-0370
snicolai@dowlhkm.com

INVOLVEMENT OPPORTUNITIES

An informational meeting is scheduled for **Wednesday, June 12, 2013** at the Missoula Senior Center (705 S. Higgins Avenue) from 6:00 p.m. to 8:00 p.m. We encourage you to attend and provide feedback about your issues and concerns for the bridges.

Please visit the study website (<http://www.mdt.mt.gov/pubinvolve/missoulabridges>) for more information on upcoming involvement opportunities.

MDT attempts to provide accommodations for any known disability that may interfere with a person's participation in any service, program or activity of the department. Alternative accessible formats of this information will be provide upon request. For more information, please call Sarah Nicolai at (406) 442-0370 or Montana Relay at 711.



DOWL HKM

P.O. Box 1009
Helena, MT 59624



MISSOULA BRIDGES
PLANNING STUDY