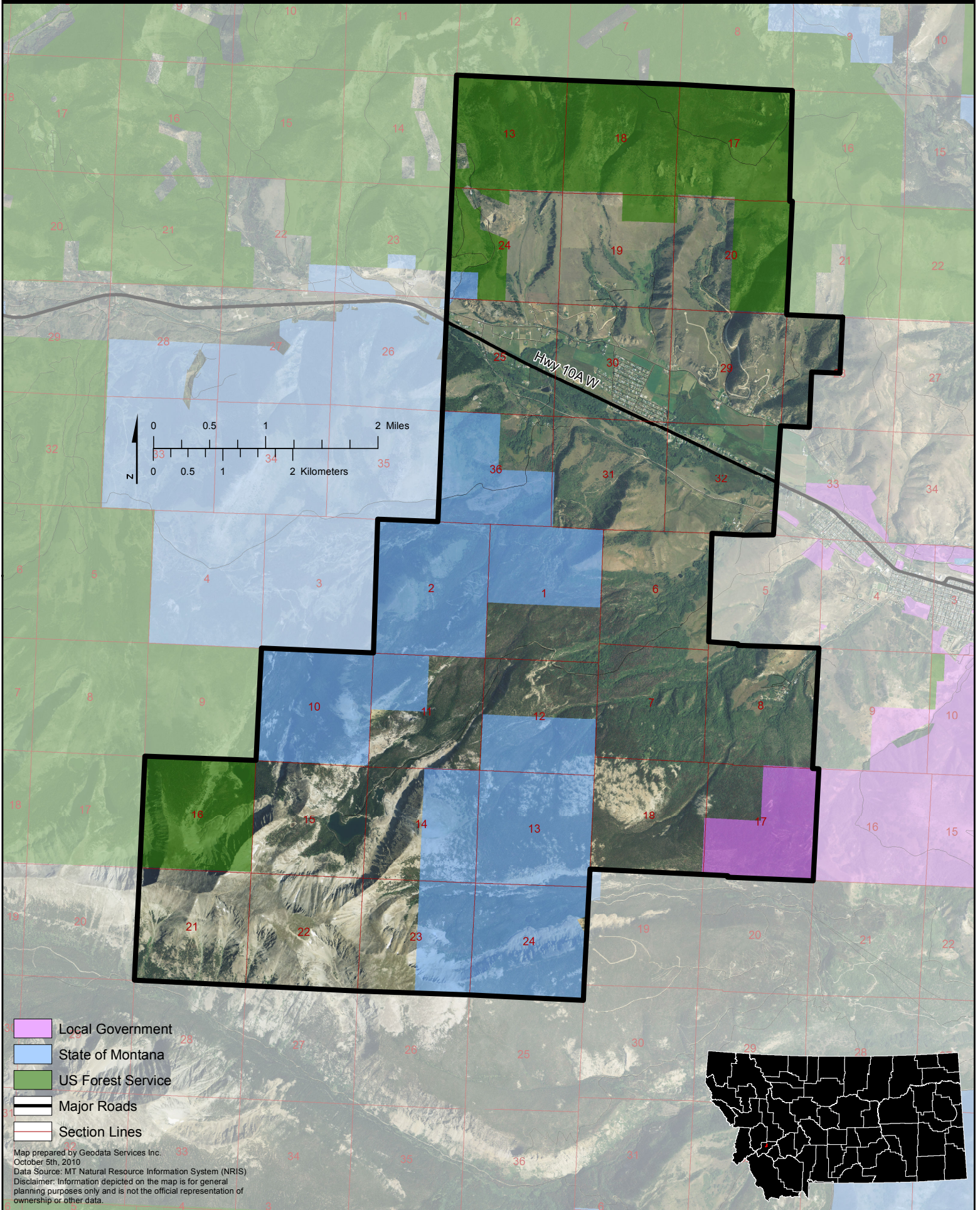


Appendix A:
Public Land Ownership Maps

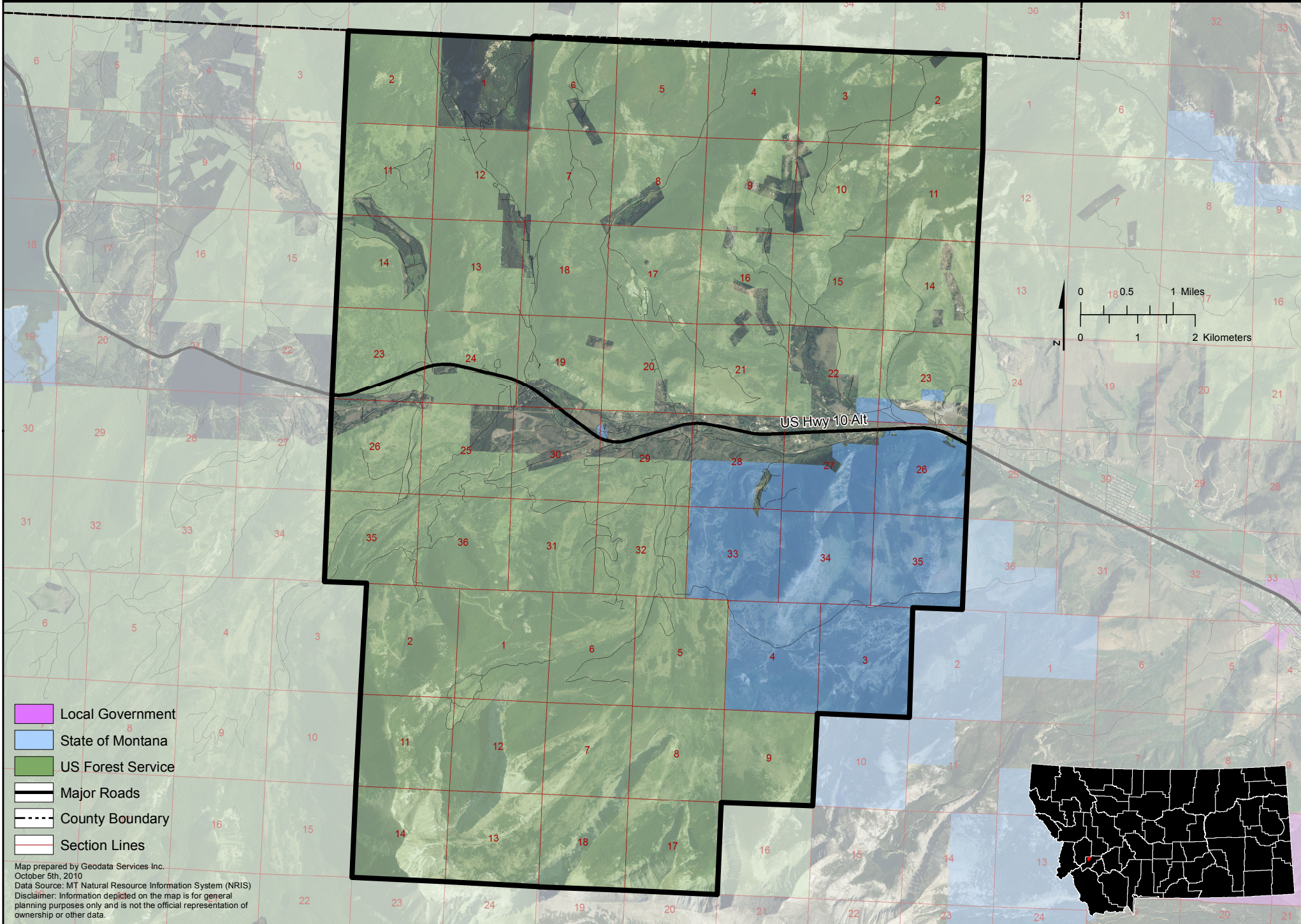
ANACONDA-DEER LODGE COUNTY WEST VALLEY PLANNING AREA



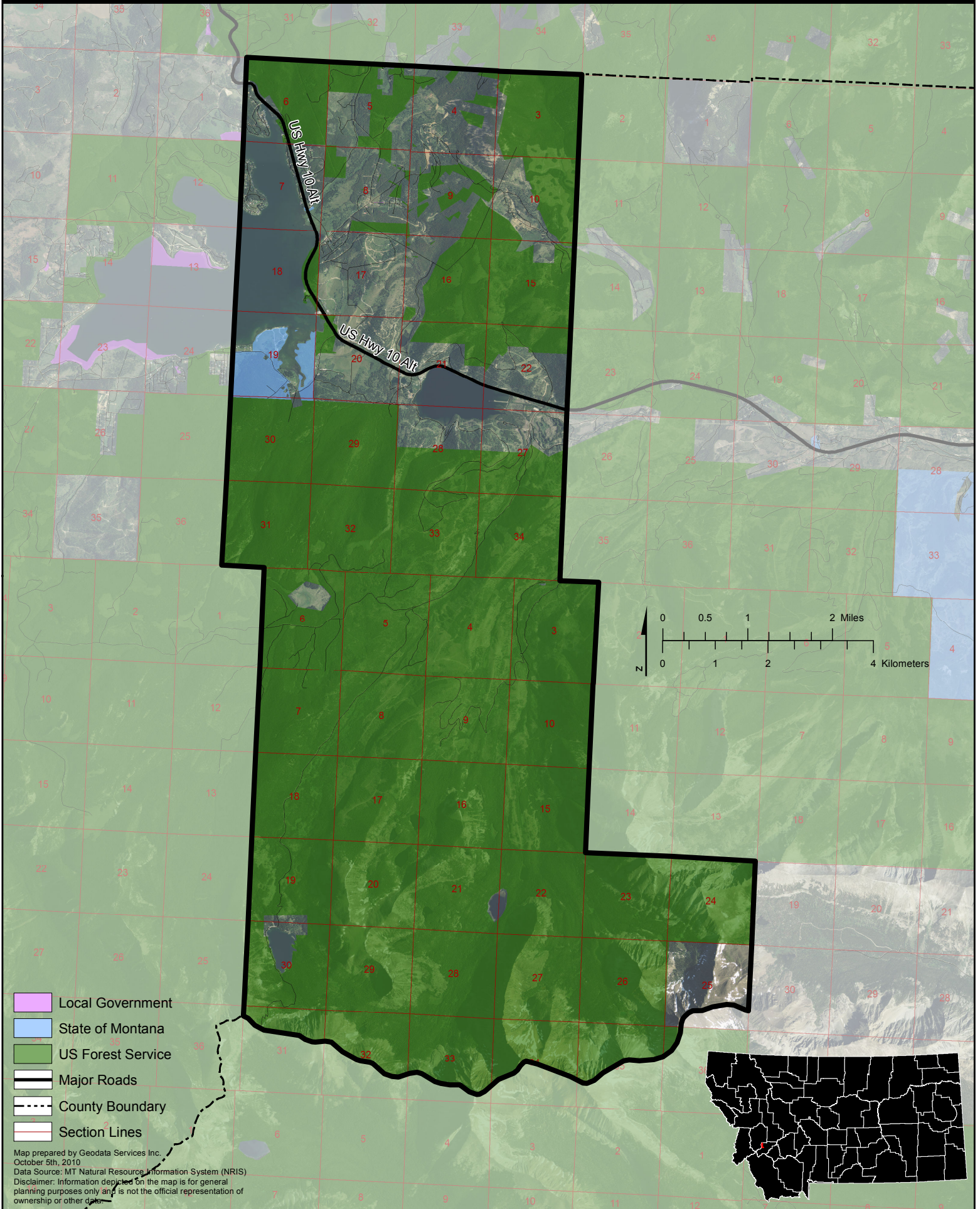
- Local Government
- State of Montana
- US Forest Service
- Major Roads
- Section Lines

Map prepared by Geodata Services Inc.
 October 5th, 2010
 Data Source: MT Natural Resource Information System (NRIS)
 Disclaimer: Information depicted on the map is for general
 planning purposes only and is not the official representation of
 ownership or other data.

ANACONDA-DEER LODGE COUNTY SPRING HILL PLANNING AREA



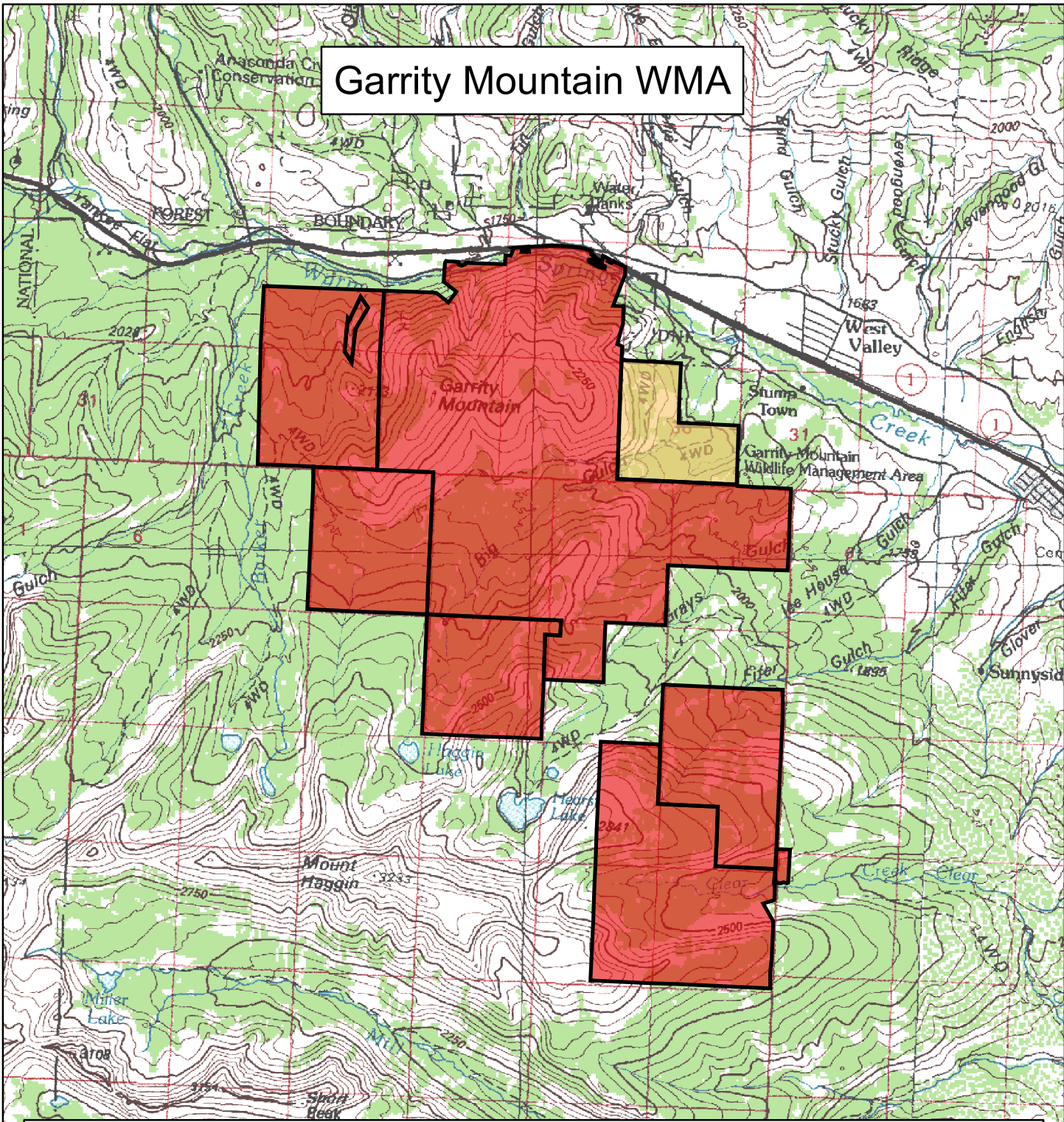
ANACONDA-DEER LODGE COUNTY GEORGETOWN LAKE PLANNING AREA



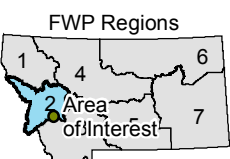
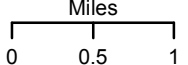
- Local Government
- State of Montana
- US Forest Service
- Major Roads
- County Boundary
- Section Lines

Map prepared by Geodata Services Inc.
 October 5th, 2010
 Data Source: MT Natural Resource Information System (NRIS)
 Disclaimer: Information depicted on the map is for general
 planning purposes only and is not the official representation of
 ownership or other data.

Garry Mountain WMA



- Fee Simple
8,999 Acres
- Agreement, Lease, or Easement
475 Acres
- Conservation Easement
0 Acres



Map produced by:

Information Management Bureau
 Montana Fish, Wildlife & Parks
 1420 East 6th Ave
 Helena, MT 59620-0701

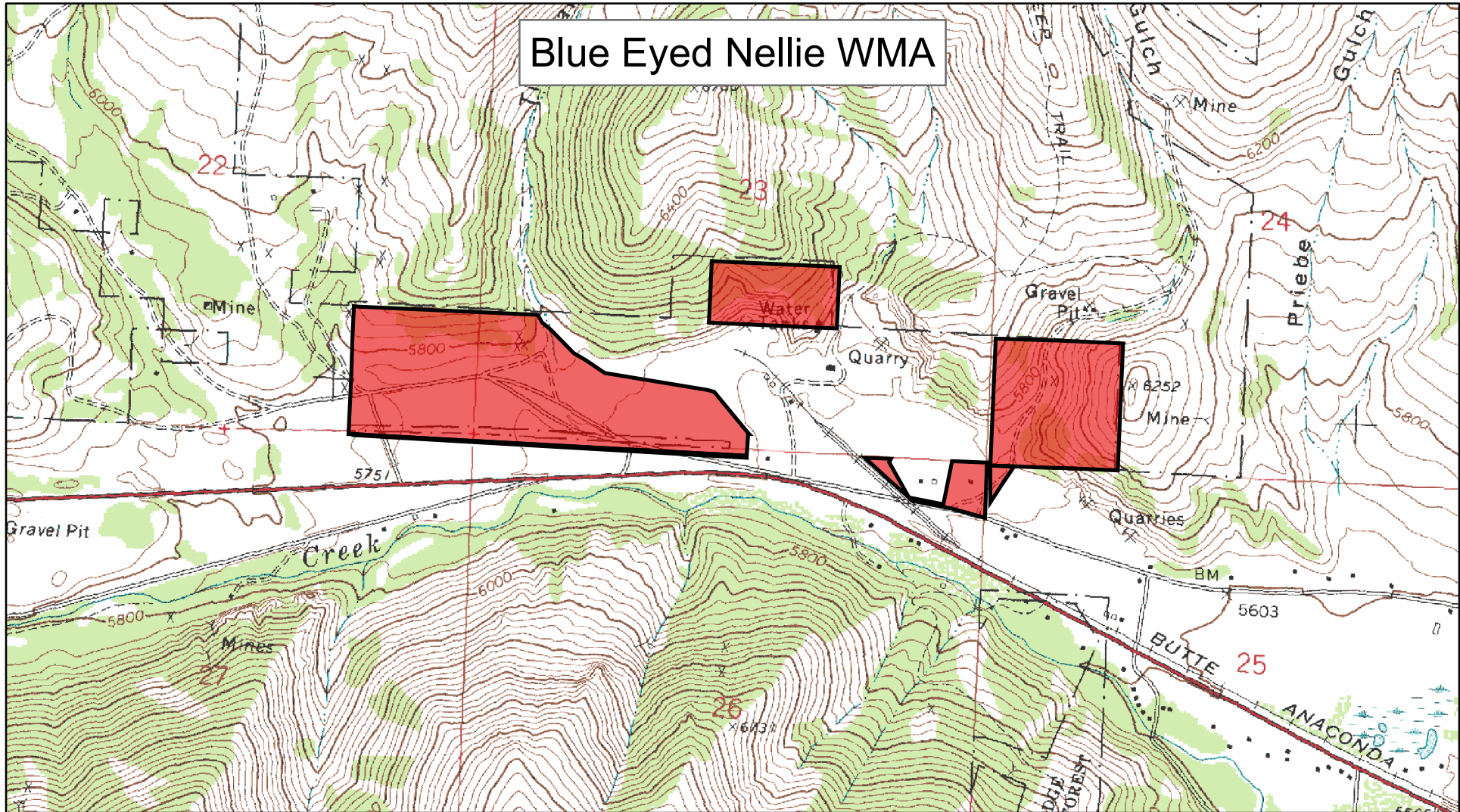
W:\IS_Requests\06\2546_WMA_PlanAVisit\SiteMaps
 \2135.mxd - CG - 11/08/2006




Lands data from Montana Fish, Wildlife & Parks.
 Digital Raster Graphics from the Natural Resource
 Information System, Montana State Library, Helena, MT.

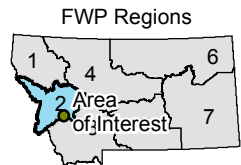
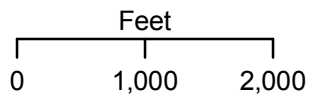
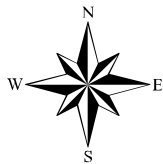


**Montana Fish,
 Wildlife & Parks**

Blue Eyed Nellie WMA



-  Fee Simple
163 Acres
-  Agreement, Lease, or Easement
0 Acres
-  Conservation Easement
0 Acres



Map produced by:

Information Management Bureau
Montana Fish, Wildlife & Parks
1420 East 6th Ave
Helena, MT 59620-0701

W:\IS_Requests\0612546_WMA_PlanAVisit\SiteMaps
V2140.mxd - CG - 11/08/2006

Lands data from Montana Fish, Wildlife & Parks.
Digital Raster Graphics from the Natural Resource
Information System, Montana State Library, Helena, MT.