

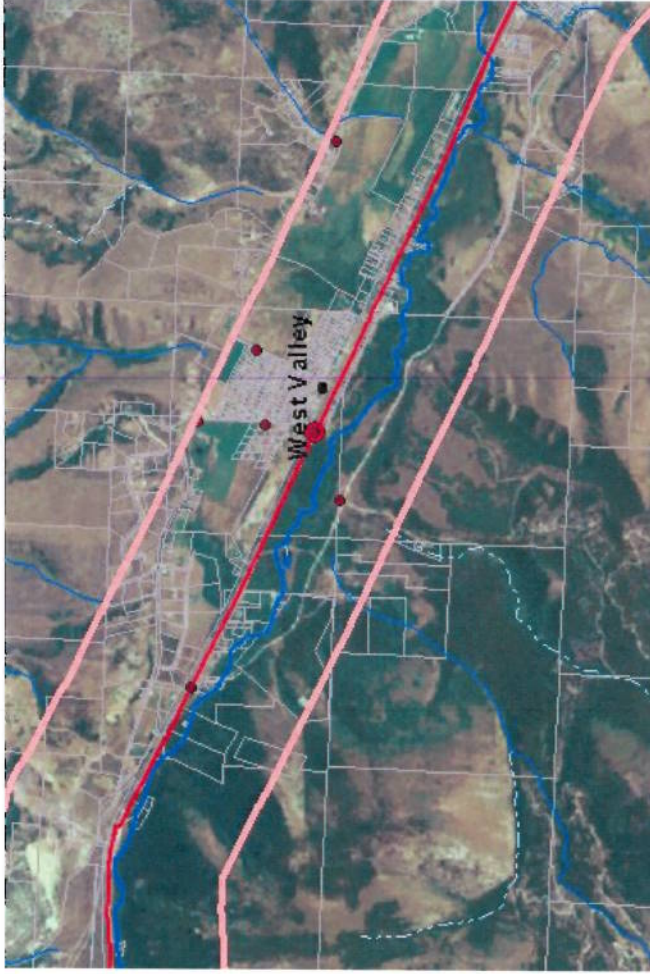
Appendix D:
Alluvium geologic maps and descriptions

PHASE - 1

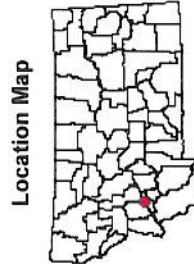
Underground Tanks, Petroleum Releases, and Release Compensation Sites

Selection Info: Highway = MT1, with a buffer of 0.5 Miles

Back To Data List Zoom IN OUT Zoom Factor 2 Pan Full Extent



This map is 4.25 miles wide. Photo Date: 8/14/2005



Data Reports

- [Underground Storage Tank Facilities](#)
- [Underground Tank Leaks](#)
- [Petroleum Compensation Sites](#)

Description

- [Click Here](#)
- [Click Here](#)
- [Click Here](#)

[Download Underground Storage Tank Facilities Shape File](#)

Identify Legend Metadata

Underground Storage Tank	Yes
Leaking Underground Tank	Yes
Petroleum Release Compensation Site	Yes
Owner Parcels	Yes
County	Yes
Highways Interstate Route U.S. Route Montana Route Secondary Route	Yes
Town Population 0-100 101-1,000 1,001-5,000 Over 5,000	Yes
Streams Major river or stream Other stream Un-named stream	Yes
Water Body Lake/Pond Swamp/Marsh Glacier	Yes

[Select a Background Image:](#)

Underground Tank Leaks

[Click here to close window and return to map.](#)

Search Area:
Highway = MT1, with a buffer of 0.5 Miles

There are 32 reported underground storage tank (UST) leaks in the study area.

Data last retrieved from DEQ on 11/8/2010 9:00:31 AM

Data Description

This report is a list of leaking underground storage tank records found in the search area from the Petroleum Release Section, Remediation Division, Montana DEQ.

The data available from this site does not represent all of DEQ's data. Data on this site is summary information for a few selected programs and resides in databases located with the Remediation Division of the DEQ. This data should be used for planning purposes only. Geographic location accuracy of all sites presented here should be verified by the user. Data on this site is typically uploaded from DEQ to NRIS once per week (every Friday night). More detailed, hardcopy information and reports are available from the DEQ and PTRCB libraries and may be viewed and obtained during regular business hours.

Event ID	Facility Name	Active	Priority	Location	City	Confirmed Release	Resolved Date
2448	AFFCO INC #2541	No		E 6TH ST & JEFFERSON ST	ANACONDA	2/24/1995	12/23/1997
936	ANACONDA UNIT HEADQUARTERS DSL #2186	No		7916 MT HIGHWAY 1 W	ANACONDA	5/2/1994	1/27/1998
1528	ARBITER PLANT #827	No		605 ARBITER PLANT LN	ANACONDA	7/24/1991	7/28/1994
1823	BUTCHS SERVICE #274	No		423 W PARK AVE	ANACONDA	4/19/1990	9/19/1991
1135	CARPET SHOP (MDOT) #2211	No		320 E COMMERCIAL AVE	ANACONDA	5/16/1994	12/23/1994
262	CLASSIC CLEANERS #3035	No		1621 E COMMERCIAL AVE	ANACONDA	10/21/1996	10/25/1996
1635	DRUMMOND CONOCO #3068	No	5.0 - Pending Closure	242 FRONTAGE RD E	DRUMMOND	11/14/1996	5/12/2009
227	FOLEYS QUALITY SERVICE & SUPPLY #2163	No	5.0 - Pending Closure	MT HIGHWAY 1	HALL	3/23/1994	7/2/2007
4439	FORMER BOWEN BULK PLANT #4439	Yes	5.0 - Pending Closure	731 W BROADWAY	PHILIPSBURG	5/12/2005	
2690	FRONT STREET CONOCO #817	No	5.0 - Pending Closure	242 FRONTAGE RD E	DRUMMOND	7/23/1991	5/20/2009
3614	GRANITE COUNTY ROAD DEPT HALL #4230	No		MT HIGHWAY 1	HALL	6/17/1999	5/12/2000
3615	GRANITE COUNTY ROAD DEPT PHILIPSBURG #4231	No		SCHOOL HILL RD	PHILIPSBURG	6/16/1999	5/2/2000
3099	GRANITE TIMBER INC #3234	Yes	2.0 - Medium Priority Characterization	34 METESH LN	PHILIPSBURG	7/8/1997	
3002	INTERMOUNTAIN BUS DEPOT #3145	No		7 MAIN ST	ANACONDA	5/14/1997	4/14/1998
343	LTS RODS & CUSTOMS #3000	No		600 E PARK AVE	ANACONDA	9/11/1996	1/28/1997
3004	MONTANA MUFFLER #3147	No		901 W PARK AVE	ANACONDA	5/7/1997	11/17/1997
1887	MT DEPT HWY DRUMMOND SHOP #127	Yes	1.1 - High Priority/Emergency response	MT HIGHWAY 1	DRUMMOND	9/22/1989	
1345	MT DEPT HWY DRUMMOND SHOP #1996	No		MT HIGHWAY 1	DRUMMOND	12/1/1993	1/9/1996
2120	OLD BLACKSMITH SHOP #2164	No			HALL	3/23/1994	9/10/1996
719	PETES CONOCO & TIRE #171	No		311B AYERS ST	ANACONDA	12/13/1989	5/29/1991
509	RDM MULTI ENTERPRISES INC #3073	No		105 N Silver St	ANACONDA	11/25/1996	1/2/1997
646	ROAD & POLICE DEPT #2656	No		800 MAIN ST	ANACONDA	7/27/1995	4/2/1997
4041	SITE 8069 #4061	No		MULLAN TRAIL RD	DRUMMOND	9/28/2001	10/29/2004
3340	STUARTS GEORGETOWN LANDING #3464	No		14411 MT HIGHWAY 1 W	ANACONDA	7/14/1998	10/13/1998
3472	STUARTS GEORGETOWN LANDING #3598	Yes	1.4 - High Priority Characterization	14411 MT HIGHWAY 1 W	ANACONDA	11/19/1998	
301	SUNSHINE STATION 417 #3004	No		3830 MT HIGHWAY 1	PHILIPSBURG	8/24/1996	9/27/1996
213	TEDS GAS & REPAIR SERVICE INC #393	No		701 E PARK AVE	ANACONDA	9/24/1990	10/30/1991
2133	THRIFTWAY SUPER STOP 3 #399	No		1420 E PARK AVE	ANACONDA	9/27/1990	4/19/1995
2638	TOWN PUMP INC ANACONDA 1 #2440	No		OLD HIGHWAY 10A E	ANACONDA	11/17/1994	8/22/1996
4377	TOWN PUMP INC ANACONDA 1 #4377	No		OLD HIGHWAY 10A E	ANACONDA	11/4/2004	6/14/2005
2872	TOWN PUMP INC ANACONDA 2 #984	No		819 W PARK AVE	ANACONDA	5/14/1991	10/19/1994
1914	WILLIAM E ARVISH #685	No		2814 MT Highway 1 W	ANACONDA	4/2/1991	3/17/1993

Underground Storage Tank Facilities

[Click here to close window and return to map.](#)

Search Area:

Highway = MT1, with a buffer of 0.5 Miles

There are 119 underground tank facilities in the study area.

Data last retrieved from DEQ on 11/8/2010 9:00:31 AM

Data Description

This report is a list of underground storage tank facility records found in the search area from the Waste and Underground Tank Bureau, Permitting and Compliance Division, Montana DEQ. The report has links to a more detailed report for each record.

The data available from this site does not represent all of DEQ's data. Data on this site is summary information for a few selected programs and resides in databases located with the Remediation Division of the DEQ. This data should be used for planning purposes only. Geographic location accuracy of all sites presented here should be verified by the user. Data on this site is typically uploaded from DEQ to NRIS once per week (every Friday night). More detailed, hardcopy information and reports are available from the DEQ and PTRCB libraries and may be viewed and obtained during regular business hours.

Facility ID (Click link to view details)	Name	Address	City	ZIP	Active Tanks
1201470	A & A TECHNICAL REPAIR INC	701 E PARK AVE	ANACONDA	59711	
1213603	AFFCO INC	E 6TH ST & JEFFERSON ST	ANACONDA	59711	
1200411	ALBERT CLARK	208 POWELL ST	ANACONDA	59711	
1206538	ALLYN R HARRIS	5010 MT HIGHWAY 1 W	ANACONDA	59711	
1213163	ANACONDA A O H BUILDING INC	106 CHERRY ST	ANACONDA	59711	
1202442	ANACONDA CITY HALL	400 E COMMERCIAL AVE	ANACONDA	59711	
6015073	ANACONDA DEER LODGE COUNTY MAIN STREET ROW	13 Main Street	Anacoda	59711	
1202147	ANACONDA DISPOSAL SERVICE INC	110 N MAIN ST	ANACONDA	59711	
1205249	ANACONDA POST & POLE INC	3715 N Cable Rd	ANACONDA	59711	
1208759	ANACONDA RADIO MICROWAVE SITE	LOST CREEK RD	ANACONDA	59711	
1201423	ANACONDA SERVICE CENTER	1000 E COMMERCIAL AVE	ANACONDA	59711	
1206090	ANACONDA UNIT HEADQUARTERS DSL	7916 MT HIGHWAY 1 W	ANACONDA	59711	
1202619	ARBITER PLANT	605 ARBITER PLANT LN	ANACONDA	59711	
1202149	ARTHUR C GROSVDOLD		ANACONDA	59711	
1205933	ARTHUR C KLEMANH	214 MOUNTAIN VIEW ST	ANACONDA	59711	
1210912	ATLANTIC RICHFIELD COMPANY	105 N Silver St	ANACONDA	59711	
1200255	BERT L WICKE	511 STEWART ST	ANACONDA	59711	
1206533	BERT WISE CONOCO	627 E PARK AVE	ANACONDA	59711	
2009544	BN DRUMMOND	US HIGHWAY 10A	DRUMMOND	59832	
2009545	BN DRUMMOND MICROWAVE		DRUMMOND	59832	
2006010	BOWEN SERVICE INC	731 W BROADWAY	PHILLIPSBURG	59858	
1200611	BOWMAN CAMP	GEORGETOWN LAKE RD	ANACONDA	59711	
1207752	BPA ANACONDA SUBSTATION		ANACONDA	59711	
2000415	BUCK RANCH		HALL	59837	
1213585	BUCK RESIDENCE	713 STEWART ST	ANACONDA	59711	
1203623	BURTON H COLWELL	9811 MT HIGHWAY 1 W	ANACONDA	59711	
1200248	BUTCHS SERVICE	423 W PARK AVE	ANACONDA	59711	
2000850	CANYON BAR	19 B ST	DRUMMOND	59832	
2010900	CEDAR LANE RANCH		HALL	59837	
2001748	CLARENCE L WALTER		HALL	59837	
1201879	CLASSIC CLEANERS	1621 E COMMERCIAL AVE	ANACONDA	59711	
5613925	COMMUNITY HOSPITAL & NURSING HOME OF ANACONDA	401 W PENNSYLVANIA ST	ANACONDA	59711	
1213484	COPPER CITY SHEET METAL	109 E COMMERCIAL AVE	ANACONDA	59711	
1202238	DADS GAS STATION DEFUNCT	W PARK AVE & HICKORY ST	ANACONDA	59711	
2001789	DALTON MORSE		DRUMMOND	59832	
1207150	DEE MOTOR CO	1200 E COMMERCIAL AVE	ANACONDA	59711	
1208599	DISCOVERY BASIN	GEORGETOWN LAKE RD	ANACONDA	59711	
2007525	EAGLE STUD MILL INC		HALL	59837	
2011600	EARL MARTIN	109 EDWARDS ST	DRUMMOND	59832	
2012704	ED SCHAFFER		DRUMMOND	59832	
1201926	EDWARD A DALLASERRA	1603 N CABLE RD	ANACONDA	59711	
1204411	ERICKSONS AUTO REPAIR	624 E PARK AVE	ANACONDA	59711	
2006011	FESSLER BROS GARAGE	2 HOLLAND ST	PHILLIPSBURG	59858	
1201531	FIRST INTERSTATE BANK OF MONTANA ANACONDA	1121 E PARK AVE	ANACONDA	59711	
2005810	FISCHERS CHEV		DRUMMOND	59832	
1201160	FITZGERALD MOTORS	204 E COMMERCIAL AVE	ANACONDA	59711	
2008087	FLINT CREEK RANCH		PHILLIPSBURG	59858	
2005514	FOLEYS QUALITY SERVICE & SUPPLY UST	MT HIGHWAY 1	HALL	59837	
1201145	FORMER YOUNG MOTOR CO	301 MAIN ST	ANACONDA	59711	
2007558	FORREST & JO JOHNSON	12 Porters Corner Ln	PHILLIPSBURG	59858	
2006570	FRONT STREET CONOCO	242 FRONTAGE RD E	DRUMMOND	59832	
2006548	GEM MOUNTAIN SAPPHIRE		PHILLIPSBURG	59858	
2003882	GENE M ALLEN		DRUMMOND	59832	
2007737	GEORGE A RICHARDSON		DRUMMOND	59832	
1203051	GEORGETOWN BOAT CLUB	GEORGETOWN LAKE RD	ANACONDA	59711	
1212896	GEORGETOWN LANDING	14411 MT HIGHWAY 1 W	ANACONDA	59711	
2008540	GRANITE COUNTY ROAD DEPT HALL	MT HIGHWAY 1	HALL	59837	
2005275	GRANITE COUNTY ROAD DEPT PHILLIPSBURG	SCHOOL HILL RD	PHILLIPSBURG	59858	
2001708	GRANITE SPORTLAND INC	728 W BROADWAY ST	PHILLIPSBURG	59858	
2013773	GRANITE TIMBER INC	34 METESH LN	PHILLIPSBURG	59858	
1211752	HAROLD E LEVENGOOD		ANACONDA	59711	
2001922	HOGANS RANCH & BUILDERS SUPPLY	100 W MAIN ST	HALL	59837	
1202237	INTERMOUNTAIN BUS DEPOT	7 MAIN ST	ANACONDA	59711	
1202439	INTERMOUNTAIN TRANSPORTATION CO INC	922 W 3RD ST	ANACONDA	59711	
2011045	JENSEN RANCH CO		HALL	59837	

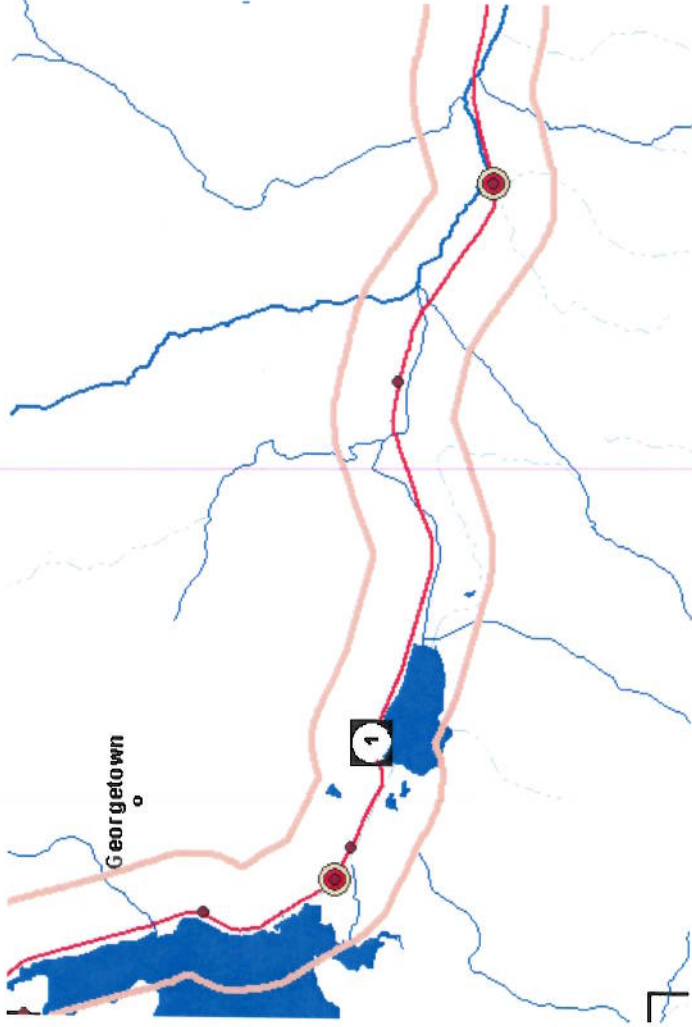
1205404	JOE F KANDUCH & SONS INC	6811 US HIGHWAY 10A W	PHILIPSBURG	59858
2010880	JOHN A CONN RANCH		HALL	59837
1200811	JOHN J BLEILE SR	500 S SIDNEY ST	ANACONDA	59711
2001609	JOHN MARYWELL		HALL	59837
2004793	JOHN SUMMERS	14103 US HIGHWAY 10W	ANACONDA	59711
1203878	JOHN T & CHARLOTTE E O'DONNELL	3008 N CABLE RD	ANACONDA	59711
1201235	JOHN W MONAHAN	301 E 3RD ST	ANACONDA	59711
2003978	JOHNSON TUNING FORK RANCH		HALL	59837
3908726	KENNEALLY CABINS	GEORGETOWN LAKE RD	ANACONDA	59711
6015172	KUDZIA FAMILY UST	520 Main St	ANACONDA	59711
2009918	LACEY HEREFORD RANCHES INC	62 GRASSLAND DR	DRUMMOND	59832
2005515	LEONARD E BRAY		HALL	59837
1204905	LTS RODS & CUSTOMS	600 E PARK AVE	ANACONDA	59711
2006645	MARSHALL CREEK RANCH INC	MARSHALL CREEKS RD	PHILIPSBURG	59858
1203501	MATTS CONOCO	200 W PARK AVE	ANACONDA	59711
2009294	MDOT 11 2006 DRUMMOND SHOP	MT HIGHWAY 1	DRUMMOND	59832
1201063	MDOT ANACONDA	717 E FRONT ST	ANACONDA	59711
1213480	MDOT ANACONDA CARPET SHOP	320 E COMMERCIAL AVE	ANACONDA	59711
2009295	MDOT PHILIPSBURG		PHILIPSBURG	59858
1201123	MODERN CLEANERS	417 E PARK AVE	ANACONDA	59711
1201407	MONTANA MUFFLER	901 W PARK AVE	ANACONDA	59711
1204822	NAZER & SON TOWING INC	500 MONROE ST	ANACONDA	59711
2013100	OLD BLACKSMITH SHOP		HALL	59837
2002201	OPEN CROSS RANCH INC	18 Open Cross Ranch Rd	HALL	59837
1201361	PARK MOTORS LLC	300 E COMMERCIAL AVE	ANACONDA	59711
1207941	PETES CONOCO & TIRE	311B AYERS ST	ANACONDA	59711
2009454	PHILIPSBURG RANGER STATION	88 BUSINESS LOOP	PHILIPSBURG	59858
5613983	PINTLER PETROLEUM INC	906 W BROADWAY RD	PHILIPSBURG	59858
1201253	PIONEER CONCRETE GRAVEL PLANT		ANACONDA	59711
1205773	PIT STOP 2	900 E COMMERCIAL AVE	ANACONDA	59711
1205876	RARIUS RAILWAY CO	900 W COMMERCIAL AVE	ANACONDA	59711
2002761	RESIDENCE DRUMMOND		DRUMMOND	59832
1204355	ROAD & POLICE DEPT	800 MAIN ST	ANACONDA	59711
2001125	ROBERT D SACKMAN		DRUMMOND	59832
1200557	ROBERT G WOLTER	15 FAIRVIEW ST N	ANACONDA	59711
2000662	ROCKING CHAIR RANCH		PHILIPSBURG	59858
1210374	RUTH BENNETT	2907 STUMPTOWN RD	ANACONDA	59711
2011653	SCHOOL BUS BARN	W MAIN ST	DRUMMOND	59832
5614021	SITE 8069	MULLAN TRAIL RD	DRUMMOND	59832
2005771	SUNSHINE STATION 417	3830 MT HIGHWAY 1	PHILIPSBURG	59858
1202793	TED KUBERICH DECEASED	822 E PARK AVE	ANACONDA	59711
1207938	THRIFTWAY SUPER STOP 3	1420 E PARK AVE	ANACONDA	59711
1200101	THRIFTWAY SUPER STOP 7	2035 W PARK AVE	ANACONDA	59711
1200882	TONY QUICK INC		ANACONDA	59711
1209326	TOWN PUMP INC ANACONDA 1	OLD HIGHWAY 10A E	ANACONDA	59711
1208668	TOWN PUMP INC ANACONDA 2	819 W PARK AVE	ANACONDA	59711
1207367	TUSS RESIDENCE	4 STEWART ST	ANACONDA	59711
1210901	WADE THOMAS RUTT	5317 MT HIGHWAY 1 W	ANACONDA	59711
1204910	WASHOE PARK TROUT HATCHERY	600 W PENNSYLVANIA ST	ANACONDA	59711
2010820	WH RANCH CO	95 HENDERSON CREEK RD	HALL	59837
2010997	WIGHT RANCH	27 Wight Mountain Ln	HALL	59837
1204891	WILLIAM E ARVISH	2814 MT Highway 1 W	ANACONDA	59711
2002191	WINNINGHOFF MOTORS INC 906 W BROADWAY	906 W BROADWAY RD	PHILIPSBURG	59858
2002738	WM R OHRMANN	6155 OLD US HIGHWAY 10A	DRUMMOND	59832

PHASE - 2

Underground Tanks, Petroleum Releases, and Release Compensation Sites

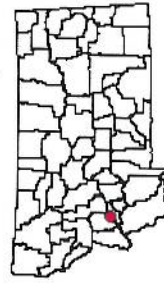
Selection Info: Highway = MT1, with a buffer of 0.5 Miles

Back To Data List Zoom IN OUT Zoom Factor 2 Pan Full Extent



This map is 8.5 miles wide.

Location Map



Data Reports

[Underground Storage Tank Facilities](#)

[Underground Tank Leaks](#)

[Petroleum Compensation Sites](#)

[Download Underground Storage Tank Facilities Shape File](#)

[Download Leaking Underground Tanks Shape File](#)

[Download Petroleum Compensation Sites Shape File](#)

Description

[Click Here](#)

[Click Here](#)

[Click Here](#)

Identify

Underground Storage Tank

Leaking Underground Tank

Petroleum Release Compensation Site

County

Highways
 Interstate Route
 U.S. Route
 Montana Route
 Secondary Route

Town Population
 0-100
 101-1,000
 1,001-5,000
 Over 5,000

Streams
 Major river or stream
 Other stream
 Un-named stream

Water Body
 Lake/Pond
 Swamp/Marsh
 Glacier

Legend

Yes

Yes

Yes

Yes

Yes

Yes

Yes

Yes

Metadata

Select a Background Image:

None

[Click here for a printable version](#)

HELP

Underground Tanks, Petroleum Releases, and Release Compensation Sites

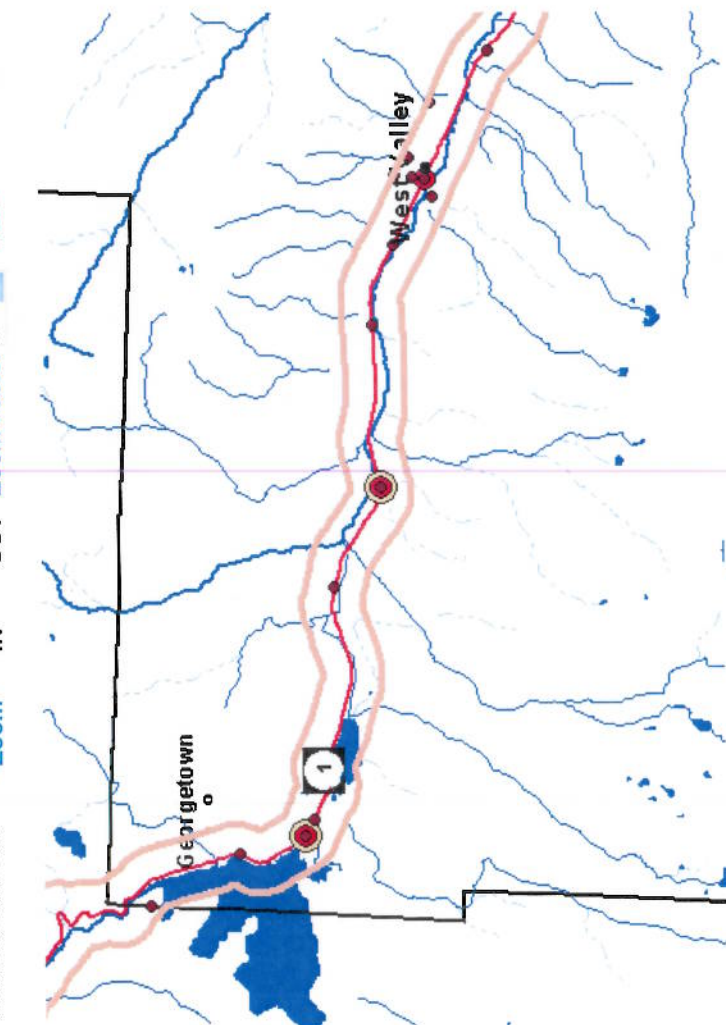
Selection Info: Highway = MT1, with a buffer of 0.5 Miles

Back To Data List Zoom IN OUT Zoom Factor 2 Pan

Identify

Legend

Metadata



This map is 17.0 miles wide.

Location Map



Data Reports

- [Underground Storage Tank Facilities](#)
- [Underground Tank Leaks](#)
- [Petroleum Compensation Sites](#)

Description

- [Click Here](#)
- [Click Here](#)
- [Click Here](#)

Underground Storage Tank Yes

Leaking Underground Tank Yes

Petroleum Release Compensation Site Yes

County Yes

Highways Yes

- Interstate Route
- U.S. Route
- Montana Route
- Secondary Route

Town Population Yes

- 0-100
- 101-1,000
- 1,001-5,000
- Over 5,000

Streams Yes

- Major river or stream
- Other stream
- Un-named stream

Water Body Yes

- Lake/Pond
- Swamp/Marsh
- Glacier

Select a Background Image:

None

[Click here for a printable version](#)

[HELP](#)

Underground Tank Leaks

[Click here to close window and return to map.](#)

Search Area:
Highway = MT1, with a buffer of 0.5 Miles

There are 32 reported underground storage tank (UST) leaks in the study area.

Data last retrieved from DEQ on 11/8/2010 9:00:31 AM

Data Description

This report is a list of leaking underground storage tank records found in the search area from the Petroleum Release Section, Remediation Division, Montana DEQ.

The data available from this site does not represent all of DEQ's data. Data on this site is summary information for a few selected programs and resides in databases located with the Remediation Division of the DEQ. This data should be used for planning purposes only. Geographic location accuracy of all sites presented here should be verified by the user. Data on this site is typically uploaded from DEQ to NRIS once per week (every Friday night). More detailed, hardcopy information and reports are available from the DEQ and PTRCB libraries and may be viewed and obtained during regular business hours.

Event ID	Facility Name	Active	Priority	Location	City	Confirmed Release	Resolved Date
2448	AFFCO INC #2541	No		E 6TH ST & JEFFERSON ST	ANACONDA	2/24/1995	12/23/1997
936	ANACONDA UNIT HEADQUARTERS DSL #2186	No		7916 MT HIGHWAY 1 W	ANACONDA	5/2/1994	1/27/1998
1528	ARBITER PLANT #827	No		605 ARBITER PLANT LN	ANACONDA	7/24/1991	7/28/1994
1823	BUTCHS SERVICE #274	No		423 W PARK AVE	ANACONDA	4/19/1990	9/19/1991
1135	CARPET SHOP (MDOT) #2211	No		320 E COMMERCIAL AVE	ANACONDA	5/16/1994	12/23/1994
262	CLASSIC CLEANERS #3035	No		1621 E COMMERCIAL AVE	ANACONDA	10/21/1996	10/25/1996
1635	DRUMMOND CONOCO #3068	No	5.0 - Pending Closure	242 FRONTAGE RD E	DRUMMOND	11/14/1996	5/12/2009
227	FOLEYS QUALITY SERVICE & SUPPLY #2163	No	5.0 - Pending Closure	MT HIGHWAY 1	HALL	3/23/1994	7/2/2007
4439	FORMER BOWEN BULK PLANT #4439	Yes	5.0 - Pending Closure	731 W BROADWAY	PHILIPSBURG	5/12/2005	
2690	FRONT STREET CONOCO #817	No	5.0 - Pending Closure	242 FRONTAGE RD E	DRUMMOND	7/23/1991	5/20/2009
3614	GRANITE COUNTY ROAD DEPT HALL #4230	No		MT HIGHWAY 1	HALL	6/17/1999	5/12/2000
3615	GRANITE COUNTY ROAD DEPT PHILIPSBURG #4231	No		SCHOOL HILL RD	PHILIPSBURG	6/16/1999	5/2/2000
3099	GRANITE TIMBER INC #3234	Yes	2.0 - Medium Priority Characterization	34 METESH LN	PHILIPSBURG	7/8/1997	
3002	INTERMOUNTAIN BUS DEPOT #3145	No		7 MAIN ST	ANACONDA	5/14/1997	4/14/1998
343	LTS RODS & CUSTOMS #3000	No		600 E PARK AVE	ANACONDA	9/11/1996	1/28/1997
3004	MONTANA MUFFLER #3147	No		901 W PARK AVE	ANACONDA	5/7/1997	11/17/1997
1887	MT DEPT HWY DRUMMOND SHOP #127	Yes	1.1 - High Priority/Emergency response	MT HIGHWAY 1	DRUMMOND	9/22/1989	
1345	MT DEPT HWY DRUMMOND SHOP #1996	No		MT HIGHWAY 1	DRUMMOND	12/1/1993	1/9/1996
2120	OLD BLACKSMITH SHOP #2164	No			HALL	3/23/1994	9/10/1996
719	PETES CONOCO & TIRE #171	No		311B AYERS ST	ANACONDA	12/13/1989	5/29/1991
509	RDM MULTI ENTERPRISES INC #3073	No		105 N Silver St	ANACONDA	11/25/1996	1/2/1997
646	ROAD & POLICE DEPT #2656	No		800 MAIN ST	ANACONDA	7/27/1995	4/2/1997
4041	SITE 8069 #4061	No		MULLAN TRAIL RD	DRUMMOND	9/28/2001	10/29/2004
3340	STUARTS GEORGETOWN LANDING #3464	No		14411 MT HIGHWAY 1 W	ANACONDA	7/14/1998	10/13/1998
3472	STUARTS GEORGETOWN LANDING #3598	Yes	1.4 - High Priority Characterization	14411 MT HIGHWAY 1 W	ANACONDA	11/19/1998	
301	SUNSHINE STATION 417 #3004	No		3830 MT HIGHWAY 1	PHILIPSBURG	8/24/1996	9/27/1996
213	TEDS GAS & REPAIR SERVICE INC #393	No		701 E PARK AVE	ANACONDA	9/24/1990	10/30/1991
2133	THRIFTWAY SUPER STOP 3 #399	No		1420 E PARK AVE	ANACONDA	9/27/1990	4/19/1995
2638	TOWN PUMP INC ANACONDA 1 #2440	No		OLD HIGHWAY 10A E	ANACONDA	11/17/1994	8/22/1996
4377	TOWN PUMP INC ANACONDA 1 #4377	No		OLD HIGHWAY 10A E	ANACONDA	11/4/2004	6/14/2005
2872	TOWN PUMP INC ANACONDA 2 #984	No		819 W PARK AVE	ANACONDA	5/14/1991	10/19/1994
1914	WILLIAM E ARVISH #685	No		2814 MT Highway 1 W	ANACONDA	4/2/1991	3/17/1993

Underground Storage Tank Facilities

[Click here to close window and return to map.](#)

Search Area:

Highway = MT1, with a buffer of 0.5 Miles

There are 119 underground tank facilities in the study area.

Data last retrieved from DEQ on 11/8/2010 9:00:31 AM

Data Description

This report is a list of underground storage tank facility records found in the search area from the Waste and Underground Tank Bureau, Permitting and Compliance Division, Montana DEQ. The report has links to a more detailed report for each record.

The data available from this site does not represent all of DEQ's data. Data on this site is summary information for a few selected programs and resides in databases located with the Remediation Division of the DEQ. This data should be used for planning purposes only. Geographic location accuracy of all sites presented here should be verified by the user. Data on this site is typically uploaded from DEQ to NRIS once per week (every Friday night). More detailed, hardcopy information and reports are available from the DEQ and PTRCB libraries and may be viewed and obtained during regular business hours.

Facility ID (Click link to view details)	Name	Address	City	ZIP	Active Tanks
1201470	A & A TECHNICAL REPAIR INC	701 E PARK AVE	ANACONDA	59711	
1213603	AFFCO INC	E 6TH ST & JEFFERSON ST	ANACONDA	59711	
1200411	ALBERT CLARK	208 POWELL ST	ANACONDA	59711	
1206538	ALLYN R HARRIS	5010 MT HIGHWAY 1 W	ANACONDA	59711	
1213163	ANACONDA A O H BUILDING INC	106 CHERRY ST	ANACONDA	59711	
1202442	ANACONDA CITY HALL	400 E COMMERCIAL AVE	ANACONDA	59711	
6015073	ANACONDA DEER LODGE COUNTY MAIN STREET ROW	13 Main Street	Anaconda	59711	
1202147	ANACONDA DISPOSAL SERVICE INC	110 N MAIN ST	ANACONDA	59711	
1205249	ANACONDA POST & POLE INC	3715 N Cable Rd	ANACONDA	59711	
1208759	ANACONDA RADIO MICROWAVE SITE	LOST CREEK RD	ANACONDA	59711	
1201423	ANACONDA SERVICE CENTER	1000 E COMMERCIAL AVE	ANACONDA	59711	
1206090	ANACONDA UNIT HEADQUARTERS DSL	7916 MT HIGHWAY 1 W	ANACONDA	59711	
1202619	ARBITER PLANT	605 ARBITER PLANT LN	ANACONDA	59711	
1202149	ARTHUR C GROSVOLD		ANACONDA	59711	
1205933	ARTHUR C KLEMMANN	214 MOUNTAIN VIEW ST	ANACONDA	59711	
1210912	ATLANTIC RICHFIELD COMPANY	105 N Silver St	ANACONDA	59711	
1200255	BERT L WICKE	511 STEWART ST	ANACONDA	59711	
1206533	BERT WISE CONOCO	627 E PARK AVE	ANACONDA	59711	
2009544	BN DRUMMOND	US HIGHWAY 10A	DRUMMOND	59832	
2009545	BN DRUMMOND MICROWAVE		DRUMMOND	59832	
2006010	BOWEN SERVICE INC	731 W BROADWAY	PHILIPSBURG	59858	
1200611	BOWMAN CAMP	GEORGETOWN LAKE RD	ANACONDA	59711	
1207752	BPA ANACONDA SUBSTATION		ANACONDA	59711	
2000415	BUCK RANCH		HALL	59837	
1213585	BUCK RESIDENCE	713 STEWART ST	ANACONDA	59711	
1203623	BURTON H COLWELL	9811 MT HIGHWAY 1 W	ANACONDA	59711	
1200248	BUTCHS SERVICE	423 W PARK AVE	ANACONDA	59711	
2000850	CANYON BAR	19 B ST	DRUMMOND	59832	
2010900	CEDAR LANE RANCH		HALL	59837	
2001748	CLARENCE L WALTER		HALL	59837	
1201879	CLASSIC CLEANERS	1621 E COMMERCIAL AVE	ANACONDA	59711	
5613925	COMMUNITY HOSPITAL & NURSING HOME OF ANACONDA	401 W PENNSYLVANIA ST	ANACONDA	59711	
1213484	COPPER CITY SHEET METAL	109 E COMMERCIAL AVE	ANACONDA	59711	
1202238	DADS GAS STATION DEFUNCT	W PARK AVE & HICKORY ST	ANACONDA	59711	
2001789	DALTON MORSE		DRUMMOND	59832	
1207150	DEE MOTOR CO	1200 E COMMERCIAL AVE	ANACONDA	59711	
1208599	DISCOVERY BASIN	GEORGETOWN LAKE RD	ANACONDA	59711	
2007525	EAGLE STUD MILL INC		HALL	59837	
2011600	EARL MARTIN	109 EDWARDS ST	DRUMMOND	59832	
2012704	ED SCHAFFER		DRUMMOND	59832	
1201926	EDWARD A DALLASERRA	1603 N CABLE RD	ANACONDA	59711	
1204411	ERICKSONS AUTO REPAIR	624 E PARK AVE	ANACONDA	59711	
2006011	FESSLER BROS GARAGE	2 HOLLAND ST	PHILIPSBURG	59858	
1201531	FIRST INTERSTATE BANK OF MONTANA ANACONDA	1121 E PARK AVE	ANACONDA	59711	
2005810	FISCHERS CHEV		DRUMMOND	59832	
1201160	FITZGERALD MOTORS	204 E COMMERCIAL AVE	ANACONDA	59711	
2008087	FLINT CREEK RANCH		PHILIPSBURG	59858	
2005514	FOLEYS QUALITY SERVICE & SUPPLY UST	MT HIGHWAY 1	HALL	59837	
1201145	FORMER YOUNG MOTOR CO	301 MAIN ST	ANACONDA	59711	
2007558	FORREST & JO JOHNSON	12 Porters Corner Ln	PHILIPSBURG	59858	
2006570	FRONT STREET CONOCO	242 FRONTAGE RD E	DRUMMOND	59832	
2006548	GEM MOUNTAIN SAPPHIRE		PHILIPSBURG	59858	
2003882	GENE M ALLEN		DRUMMOND	59832	
2007737	GEORGE A RICHARDSON		DRUMMOND	59832	
1203051	GEORGETOWN BOAT CLUB	GEORGETOWN LAKE RD	ANACONDA	59711	
1212896	GEORGETOWN LANDING	14411 MT HIGHWAY 1 W	ANACONDA	59711	
2008540	GRANITE COUNTY ROAD DEPT HALL	MT HIGHWAY 1	HALL	59837	
2005275	GRANITE COUNTY ROAD DEPT PHILIPSBURG	SCHOOL HILL RD	PHILIPSBURG	59858	
2001708	GRANITE SPORTLAND INC	728 W BROADWAY ST	PHILIPSBURG	59858	
2013773	GRANITE TIMBER INC	34 METESH LN	PHILIPSBURG	59858	
1211752	HAROLD E LEVENGOOD		ANACONDA	59711	
2001922	HOGANS RANCH & BUILDERS SUPPLY	100 W MAIN ST	HALL	59837	
1202237	INTERMOUNTAIN BUS DEPOT	7 MAIN ST	ANACONDA	59711	
1202439	INTERMOUNTAIN TRANSPORTATION CO INC	922 W 3RD ST	ANACONDA	59711	
2011045	JENSEN RANCH CO		HALL	59837	

1205404	JOE F KANDUCH & SONS INC	6811 US HIGHWAY 10A W	PHILIPSBURG	59858
2010880	JOHN A CONN RANCH		HALL	59837
1200811	JOHN J BLEILE SR	500 S SIDNEY ST	ANACONDA	59711
2001609	JOHN MARYWELL		HALL	59837
2004793	JOHN SUMMERS	14103 US HIGHWAY 10W	ANACONDA	59711
1203878	JOHN T & CHARLOTTE E ODONNELL	3008 N CABLE RD	ANACONDA	59711
1201235	JOHN W MONAHAN	301 E 3RD ST	ANACONDA	59711
2003978	JOHNSON TUNING FORK RANCH		HALL	59837
3908726	KENNEALLY CABINS	GEORGETOWN LAKE RD	ANACONDA	59711
6015172	KUDZIA FAMILY UST	520 Main St	ANACONDA	59711
2009918	LACEY HEREFORD RANCHES INC	62 GRASSLAND DR	DRUMMOND	59832
2005515	LEONARD E BRAY		HALL	59837
1204905	LTS RODS & CUSTOMS	600 E PARK AVE	ANACONDA	59711
2006645	MARSHALL CREEK RANCH INC	MARSHALL CREEKS RD	PHILIPSBURG	59858
1203501	MATTS CONOCO	200 W PARK AVE	ANACONDA	59711
2009294	MDOT 11 2006 DRUMMOND SHOP	MT HIGHWAY 1	DRUMMOND	59832
1201063	MDOT ANACONDA	717 E FRONT ST	ANACONDA	59711
1213480	MDOT ANACONDA CARPET SHOP	320 E COMMERCIAL AVE	ANACONDA	59711
2009295	MDOT PHILIPSBURG		PHILIPSBURG	59858
1201123	MODERN CLEANERS	417 E PARK AVE	ANACONDA	59711
1201407	MONTANA MUFFLER	901 W PARK AVE	ANACONDA	59711
1204822	NAZER & SON TOWING INC	500 MONROE ST	ANACONDA	59711
2013100	OLD BLACKSMITH SHOP		HALL	59837
2002201	OPEN CROSS RANCH INC	18 Open Cross Ranch Rd	HALL	59837
1201361	PARK MOTORS LLC	300 E COMMERCIAL AVE	ANACONDA	59711
1207941	PETES CONOCO & TIRE	311B AYERS ST	ANACONDA	59711
2009454	PHILIPSBURG RANGER STATION	88 BUSINESS LOOP	PHILIPSBURG	59858
5613983	PINTLER PETROLEUM INC	906 W BROADWAY RD	PHILIPSBURG	59858
1201253	PIONEER CONCRETE GRAVEL PLANT		ANACONDA	59711
1205773	PJT STOP 2	900 E COMMERCIAL AVE	ANACONDA	59711
1205876	RARUS RAILWAY CO	900 W COMMERCIAL AVE	ANACONDA	59711
2002761	RESIDENCE DRUMMOND		DRUMMOND	59832
1204355	ROAD & POLICE DEPT	800 MAIN ST	ANACONDA	59711
2001125	ROBERT D SACKMAN		DRUMMOND	59832
1200557	ROBERT G WOLTER	15 FAIRVIEW ST N	ANACONDA	59711
2000662	ROCKING CHAIR RANCH		PHILIPSBURG	59858
1210374	RUTH BENNETT	2907 STUMPTOWN RD	ANACONDA	59711
2011653	SCHOOL BUS BARN	W MAIN ST	DRUMMOND	59832
5614021	SITE 8069	MULLAN TRAIL RD	DRUMMOND	59832
2005771	SUNSHINE STATION 417	3830 MT HIGHWAY 1	PHILIPSBURG	59858
1202793	TED KUBERICH DECEASED	822 E PARK AVE	ANACONDA	59711
1207938	THRIFTWAY SUPER STOP 3	1420 E PARK AVE	ANACONDA	59711
1200101	THRIFTWAY SUPER STOP 7	2035 W PARK AVE	ANACONDA	59711
1200882	TONY QUICK INC		ANACONDA	59711
1209326	TOWN PUMP INC ANACONDA 1	OLD HIGHWAY 10A E	ANACONDA	59711
1208668	TOWN PUMP INC ANACONDA 2	819 W PARK AVE	ANACONDA	59711
1207367	TUSS RESIDENCE	4 STEWART ST	ANACONDA	59711
1210901	WADE THOMAS RUTT	5317 MT HIGHWAY 1 W	ANACONDA	59711
1204910	WASHOE PARK TROUT HATCHERY	600 W PENNSYLVANIA ST	ANACONDA	59711
2010820	WH RANCH CO	95 HENDERSON CREEK RD	HALL	59837
2010997	WIGHT RANCH	27 Wight Mountain Ln	HALL	59837
1204891	WILLIAM E ARVISH	2814 MT Highway 1 W	ANACONDA	59711
2002191	WINNINGHOFF MOTORS INC 906 W BROADWAY	906 W BROADWAY RD	PHILIPSBURG	59858
2002738	WM R OHRMANN	6155 OLD US HIGHWAY 10A	DRUMMOND	59832

Remediation Response Sites - PHASE 1

Selection Info: Highway = MT1, with a buffer of 0.5 Miles

Back To Data List Zoom IN OUT Zoom Factor 2 Pan Full Extent



This map is 4.25 miles wide. Photo Date: 8/14/2005

Location Map



Data Reports

[Remediation Response Sites](#)

[Download Remediation Response Sites Shape File](#)

Description

[Click Here](#)

Identify Legend Metadata

Remediation Response Sites

- State Superfund Program
- Water Quality Act
- Agricultural Chemical Groundwater Protection Act
- Voluntary Cleanup and Redevelopment
- Hazardous Waste Act
- Abandoned Mines Act
- Metal Mine Reclamation Act
- Solid Waste Management Act
- Underground Storage Tank Act
- Brownfields
- Enforcement Site

Yes

Owner Parcels

Yes

County

Yes

Highways

- Interstate Route
- U.S. Route
- Montana Route
- Secondary Route

Yes

Town Population

- 0-100
- 101-1,000
- 1,001-5,000
- Over 5,000

Yes

Streams

- Major river or stream
- Other stream
- Un-named stream

Yes

Water Body

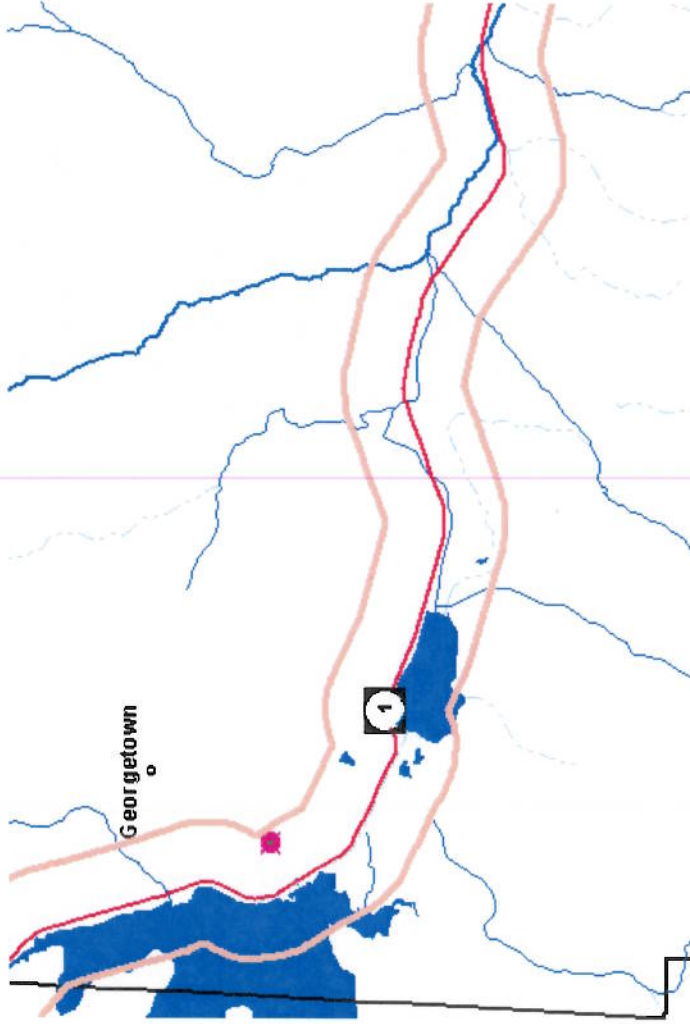
- Lake/Pond
- Swamp/Marsh
- Glacier

Yes

Remediation Response Sites - PHASE 2

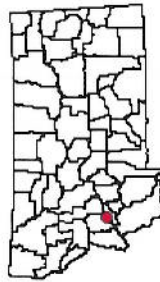
Selection Info: Highway = MT1, with a buffer of 0.5 Miles

Back To Data List Zoom IN OUT Zoom Factor 2 Pan Full Extent



This map is 8.5 miles wide.

Data Reports



Description

[Click Here](#)

[Remediation Response Sites](#)

[Download Remediation Response Sites Shape File](#)

Identify Legend Metadata

Remediation Response Sites

- State Superfund Program
- Federal Superfund Program
- Water Quality Act
- ▲ Agricultural Chemical Groundwater Protection Act
- Voluntary Cleanup and Redevelopment
- Hazardous Waste Act
- Abandoned Mines Act
- Metal Mine Reclamation Act
- Solid Waste Management Act
- Underground Storage Tank Act
- × Brownfields
- Enforcement Site

Yes

County

Highways

- Interstate Route
- U.S. Route
- Montana Route
- Secondary Route

Yes

Town Population

- 0-100
- 101-1,000
- 1,001-5,000
- Over 5,000

Yes

Streams

- Major river or stream
- Other stream
- Un-named stream

Yes

Remediation Response Site Report

Data last retrieved from DEQ on 11/8/2010 9:00:31 AM

Site ID: [GTRR](#)

Names: Georgetown Railroad,

Description: Abandoned railroad spur line/bed in mining district with mine waste piles, tailings, slag and ballast material.

Site Type: Brownfield

Operation: Operated from 1912 to 1924

State: MT **County:** Deer Lodge **City:** Georgetown **Location:** East of Highway 1 and runs north northeast for approx 5.5 miles to Southern Cross

Legal Location: **Township:** 5N **Range:** 13W **Section:** 17

Latitude: 46.18444 **Longitude:** -113.25777 **HUC:** 170102020105 -- Flint Creek

Latitude/Longitude Determination Method: 3 Map Interpolation

Site Cleanup Program Information

Program	Program Date	Listed	Delisted	State Rank	Referred
BROWN					
CECRA	4/12/1991	6/27/1991		H	
CERCLA	4/12/1991	4/12/1991			

Site Contaminant Information

Sphere: Surface Sediment **Contaminant:** Metal/Metalloid

Observed: Yes **Low Depth:** **Material Volume:**

Receptor: Wetland **Distance:** 0 **Area Impacted:**

Remark: Sediments from wetland adjacent to Georgetown Lake contain elevated As, Ba, Be, Cd, Cr, Co, Cu, Pb, Hg, Ni, Ag, V & Zn. Sediments in North Fork Flint Creek contain 3x background for As & Cu.

Sphere: Tailings **Contaminant:** Arsenic

Observed: Yes **Low Depth:** 0 **Material Volume:** 67,000 yd3

Receptor: Residences, wetlands, surface water **Distance:** **Area Impacted:**

Remark: 2005 sampling by EPA in Hold Fast tailings; SPLP results exceed DEQ-7; total arsenic >40 mg/kg.

Sphere: Slag **Contaminant:** Arsenic

Observed: Yes **Low Depth:** 2 **Material Volume:** Unknown

Receptor: Residences, wetlands, surface water **Distance:** <100' **Area Impacted:** Undetermined

Remark: Summer 2005 sampling by EPA in railroad bed; SPLP results exceed DEQ-7; total arsenic >40 mg/kg.

Sphere: Slag **Contaminant:** Lead

Observed: Yes **Low Depth:** 0 **Material Volume:** Unknown

Receptor: Residences, wetlands, surface water **Distance:** **Area Impacted:** Undetermined

Remark: Summer 2005 sampling by EPA in railroad bed. Total lead greater than PRG.

Sphere: Surface Water **Contaminant:** Metal/Metalloid

Observed: Yes **Low Depth:** **Material Volume:**

Receptor: Wetland **Distance:** 500' **Area Impacted:**

Remark: Very low levels of As found in samples from North Fork Flint Creek.

Sphere: Soils **Contaminant:** Metal/Metalloid

Observed: Yes **Low Depth:** 3 **Material Volume:**

Receptor: Residence **Distance:** 500' **Area Impacted:** 23 ac

Remark: Elevated As, Ba, Cu, Pb, Hg, Ag, & Zn found in material used as RR ballast. RR ballast with elevated As and Pb found in residential yards.

Sphere: Waste Rock **Contaminant:** Arsenic

Observed: Yes **Low Depth:** **Material Volume:** 63,000 yd3

Receptor: Residences, wetlands, surface water **Distance:** 500' **Area Impacted:**

Remark: 2005 sampling by EPA in waste rock dumps; SPLP results exceed DEQ-7; total arsenic >40 mg/kg.

Site Cleanup Action Information

Start Date: 4/12/1991 **End Date:** 4/12/1991 **Program:** CERCLA **Report Date:**

Description: CERCLA Discovery - CERCLA Discovery - Entire Site

Purpose: To evaluate the extent of contamination at the site, potential pathways and receptors, and the site's potential for inclusion on the NPL.

Start Date: 4/12/1991 **End Date:** 6/13/1991 **Program:** CERCLA **Report Date:** 6/13/1991

Description: CERCLA Preliminary Assessment - CERCLA Preliminary Assessment - Entire Site

Purpose: EPA CERCLIS DATA: Higher priority for further assessment

Start Date: 4/6/1992 **End Date:** 7/2/1992 **Program:** VOL **Report Date:** 7/2/1992

Description: Site Assessment Activities - Soil investigation for MT Dept of Transportation - Areas of site to be affected by Georgetown Lake project F19-1(17)24

Purpose: Determine potential hazards during proposed road construction due to contaminated soils.

Start Date: 3/15/1993 **End Date:** 9/27/1993 **Program:** CERCLA **Report Date:** 9/17/1993

Description: Site Assessment Activities - Site History Report, SAP, field sampling, analytical results report, and site investigation report. - Entire Site

Purpose: Fill in data gaps remaining after CERCLA PA and further investigate contamination of soil and surface water; evaluate pathways and receptors; complete a site inspection report.

Start Date: 9/27/1993 **End Date:** 9/27/1993 **Program:** CERCLA **Report Date:**

Description: Site Assessment Activities - Site Inspection - Entire Site

Purpose: EPA CERCLIS Data: Action Code - SI - SITE INSPECTION

Start Date: 1/1/1995 **End Date:** 12/31/1995 **Program:** CERCLA **Report Date:**

Description: Site Assessment Activities - Exploratory drilling - Southern Cross

Purpose: Magellan Resources/North Lily Mining Company, in concert with several joint venture partners conducted exploratory drilling on the property now owned by Southern Cross.

Start Date: 1/12/2000 **End Date:** 11/1/2000 **Program:** CERCLA **Report Date:** 11/1/2000

Description: Site Assessment Activities - Collection of surface water, groundwater, soil, sediment sampling - Abandoned railroad spur, residential properties, nearby springs, waste pile, and tributaries

Purpose: To determine extent of contamination

Start Date: 6/19/2000 **End Date:** 11/2/2000 **Program:** CERCLA **Report Date:**

Description: Site Assessment Activities - Site Inspection - Entire Site

Purpose: EPA CERCLIS Data: Action Code - SI - SITE INSPECTION

Start Date: 7/1/2000 **End Date:** 2/6/2001 **Program:** CERCLA **Report Date:** 2/6/2001

Description: Site Assessment Activities - Drilling on the tailings and Southern Cross/Hold Fast tailings stability analysis. - Hold Fast tailings impoundment

Purpose: Evaluate volume and content of tailings and evaluate underlying native soils for geotechnical stability analysis.

Start Date: 7/6/2000 **End Date:** 7/6/2000 **Program:** CERCLA **Report Date:** 7/6/2000

Description: Site Assessment Activities - Voluntary look at site and make recommendations - Southern Cross owned land

Purpose: To investigate what is present on site and options for cleaning it up at request of owner.

Start Date: 8/7/2000 **End Date:** 8/7/2000 **Program:** CERCLA **Report Date:** 12/1/2000

Description: Site Assessment Activities - Excavate test pits - Tailings, waste piles, and waste dumps.

Purpose: Calculate site specific cleanup levels for arsenic soil for use at Southern Cross mine site.

Start Date: 11/15/2001 **End Date:** **Program:** CERCLA **Report Date:**

Description: Collection of Seldom Used EPA Action Codes (See Action Purpose Field) - Other Cleanup Activity: State-Lead Cleanup - Entire Site

Purpose: EPA CERCLIS Data: Action Code - OS - Other Cleanup Activity: State-Lead Cleanup

Start Date: 10/10/2002 **End Date:** **Program:** CECRA **Report Date:** 1/26/2004

Description: Site Assessment Activities - Residential area sampling - Residential areas/yards adjacent to railroad bed.

Purpose: Characterize extent of arsenic and lead at specific residential properties located adjacent to and downgradient from railroad bed.

Start Date: 6/1/2005 **End Date:** **Program:** CECRA **Report Date:**

Description: Site Assessment Activities - Collect soil samples from waste piles, tailings & railroad bed for speciation, bioaccessibility and leachability. - Entire Site

Purpose: Evaluate waste material speciation, bioaccessibility and leachability for repository placement.

Start Date: 7/1/2005 **End Date:** **Program:** CERCLA **Report Date:** 7/19/2005

Description: Site Assessment Activities - Southern Cross waste repository slope stability analysis. - Southern Cross mine proposed repository site

Purpose: Slope stability analysis for proposed repository site. (See draft Southern Cross repository site characterization and design report - August 1, 2005 Attachment D).

Start Date: 7/1/2005 **End Date:** **Program:** CERCLA **Report Date:** 4/20/2007

Description: Interim Action - Draft Final Southern Cross Repository Site Characterization & Design Report submitted to EPA by ARCO - Southern Cross

Purpose: ARCO's final design report for repository

Start Date: 7/31/2007 **End Date:** **Program:** CERCLA **Report Date:** 5/22/2009

Description: Interim Action - Removal of mine waste material; anticipate AOC between ARCO and EPA - as of 8/15/2007 AOC not signed; waste repository on Southern Cross LLC property - Southern Cross LLC property: tailings impoundment, waste rock piles; former railroad; residential yards; repository on SCC property

Purpose: remove mine waste material w/ arsenic greater than 250 ppm

GEORGETOWN RAILROAD

Georgetown, Montana

Site Summary

Page 1 of 2

June 8, 2009

Georgetown Railroad, located near Georgetown, is an abandoned railroad spur, which hauled ore to Anaconda from 1912 to 1924. The builders of the railroad used fine-grained mine tailings and waste rock for ballast. This material, coupled with ore spillage from the rail cars, is a potential source of heavy metals contamination of soils and surface water. The Facility also includes mining waste rock and tailings piles in the Southern Cross area.

Approximately five and half miles (approximately 23-acre) of unfenced railroad property passes through residential areas and forest land. In places, the railroad comes within 500 feet of Georgetown Lake and associated wetlands. The North Fork of Flint Creek is down gradient of the railroad.

In November 1990, Jim and Lanora Peterson, heirs to the Emily Lyon property, collected soil samples on their property for metals analysis. The results showed elevated levels of heavy metals.

In April 1991, MDHES completed a CERCLA preliminary assessment to collect information on the site and assess the potential threat to human health and the environment.

In May 1991, MDHES conducted a site investigation, which documented the presence of elevated heavy metals and arsenic in soils along the abandoned railroad.

In April 1992, consultants for the Montana Department of Transportation conducted a site investigation to determine if site contamination could pose hazards during a proposed road construction project. The investigation found elevated levels of metals in some areas of the proposed construction project and recommended certain measures to reduce hazards during and after construction.

A May 1993 CERCLA site investigation by MDHES documented elevated metals and arsenic levels in soils near residences on and down gradient of former railroad property, and in nearby surface water and wetlands.

In June 2000, the US EPA conducted an Expanded Site Investigation to determine the extent of the contamination. Soil, sediment, groundwater, and surface water samples were collected at the site and surrounding areas. The investigation found elevated levels of metals in soil, sediment and surface water samples.

In August 2000, Atlantic Richfield Company (ARCO) voluntarily conducted in vivo analysis of contaminated areas on the Southern Cross Company, LLC owned land to calculate site-specific clean up numbers for the Southern Cross Company land. DEQ (formerly MDHES) has not reviewed or accepted the results of this analysis. In addition, Southern Cross Company, LLC began drilling and digging test pits in the tailings piles located on the Southern Cross owned portion of the site to evaluate content and thickness of the tailings and to evaluate type and depth of native material.

In 2003, ARCO conducted a Residential Area investigation to character and evaluate the extent of lead and arsenic in residential yards. The investigation found lead and arsenic concentrations greater than generic screening levels.

In April 2005 as part of negotiation with the US EPA for a Unilateral Administrative Order (UAO), ARCO submitted Time Critical Removal Action (TCRA) Design Plans to EPA for the removal of ballast material in the abandoned railroad bed and residential yard areas. In August 2005, ARCO submitted a Site Characterization and Repository Design for a repository on Southern Cross Company property.

During the summer of 2006, the US EPA collected samples from the railroad bed material, waste rock piles and tailings pile to evaluate the bioaccessibility and leachability of the material. The results showed that arsenic is bioaccessible and leaches at concentrations greater than DEQ-7/federal Maximum Contaminant Level standards.

In July 2006, the US EPA ended AOC negotiations with ARCO to finalize the TCRA Design Plans and Repository Design. In 2007, ARCO began construction of the repository and removal actions. A single monitoring well was constructed down gradient of the repository.

In 2008, ARCO continued with its removal action. Also in 2008, the TCRA Design Plans and Repository Design was approved by EPA, and ARCO and the EPA signed the AOC. DEQ was not a signatory on the AOC. In 2009, ARCO is expected to conclude its removal action and close the repository. Under its agreement with EPA, ARCO will be

GEORGETOWN RAILROAD

Georgetown, Montana

Site Summary

Page 2 of 2

responsible for operation and maintenance (O&M) of the repository for a limited time, then transfer O&M responsibilities to Southern Cross Company.

In the spring of 2009, ARCO submitted a construction completion report (CCR) or the TCRA action to EPA. The review of the CCR by EPA is pending.

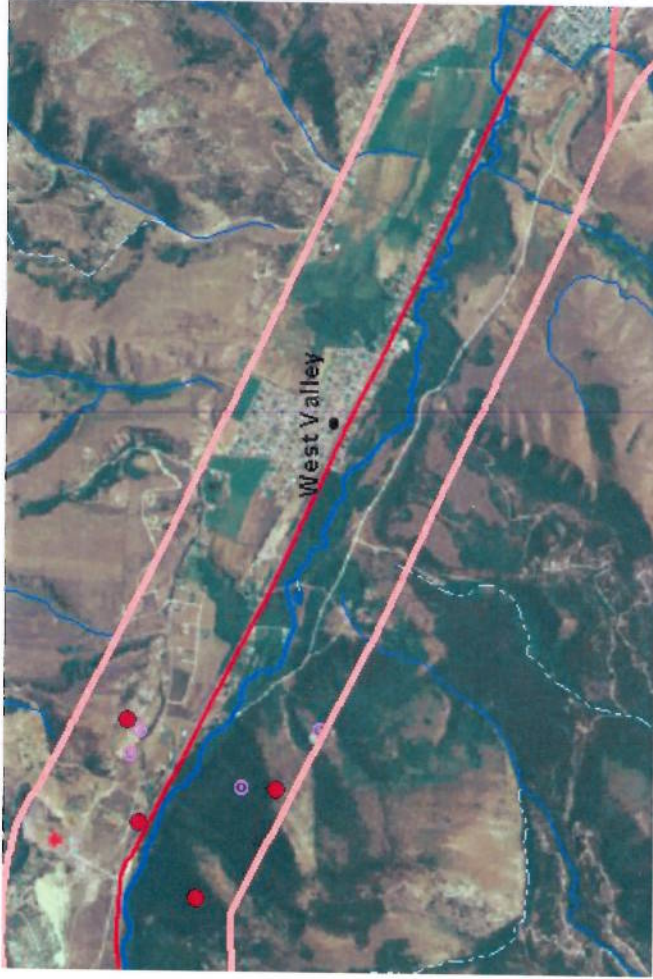
Because of the rapid growth in the area and due to the elevated concentrations of arsenic and lead, public and local government (Anaconda Deer Lodge County) interest in cleaning up the facility is very high.

The Montana DEQ CECRA program currently is the lead on the facility and ranked it as high priority.

Abandoned and Inactive Mines - PHASE-1

Selection Info: Highway = MT1, with a buffer of 0.5 Miles

Back To Data List Zoom IN OUT Zoom Factor 2 Pan Full Extent



This map is 4.25 miles wide. Photo Date: 8/14/2005

Location Map



Data Reports

- [DEQ Abandoned Mines Inventory](#)
- [Bureau of Mines & Geology Mine Data](#)
- [Mining Districts Report](#)

Description

- [Click Here](#)
- [Click Here](#)
- [Click Here](#)

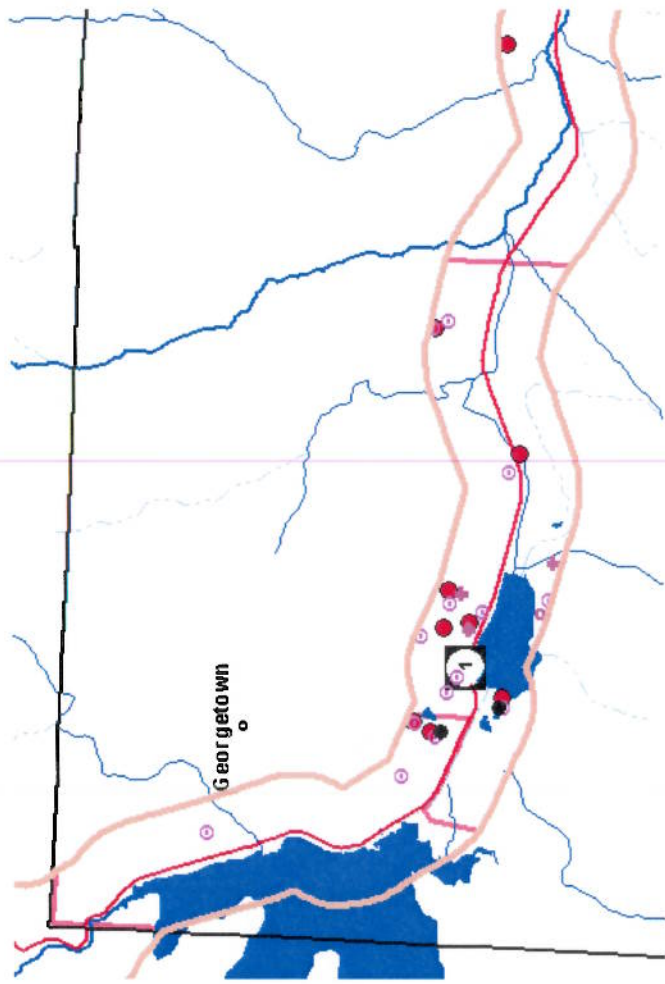
- [Download Abandoned Mine Inventory Shape File](#)
- [Download Priority Abandoned Mine Points Shape File](#)
- [Download Abandoned/Inactive Mines Shape File](#)
- [Download Mining Districts Shape File](#)

Identify	Legend	Metadata
	<ul style="list-style-type: none"> ● Abandoned Mine Site ● Priority Abandoned Mines (Points for better visibility) 	Yes
	<p>MBMG Mines Data</p> <ul style="list-style-type: none"> + Developed Deposit + Producer + Temporary Shutdown + Past Producer + Exp Prospect + Raw Prospect + Other + Unknown 	Yes
	<ul style="list-style-type: none"> Mining Districts County 	Yes
	<p>Highways</p> <ul style="list-style-type: none"> Interstate Route U.S. Route Montana Route Secondary Route 	Yes
	<p>Town Population</p> <ul style="list-style-type: none"> ○ 0-100 ● 101-1,000 ● 1,001-5,000 ● Over 5,000 	Yes
	<p>Streams</p> <ul style="list-style-type: none"> Major river or stream Other stream Un-named stream 	Yes
	<p>Water Body</p> <ul style="list-style-type: none"> Lake/Pond Swamp/Marsh Glacier 	Yes

Abandoned and Inactive Mines - PHASE 2

Selection Info: Highway = MT1, with a buffer of 0.5 Miles

Back To Data List Zoom IN OUT Zoom Factor 2 Pan



This map is 8.5 miles wide.

Location Map



Data Reports

- [DEQ Abandoned Mines Inventory](#)
- [Bureau of Mines & Geology Mine Data](#)
- [Mining Districts Report](#)
- [Download Abandoned Mine Inventory Shape File](#)
- [Download Priority Abandoned Mine Points Shape File](#)
- [Download Abandoned/Inactive Mines Shape File](#)
- [Download Mining Districts Shape File](#)

Description

- [Click Here](#)
- [Click Here](#)
- [Click Here](#)

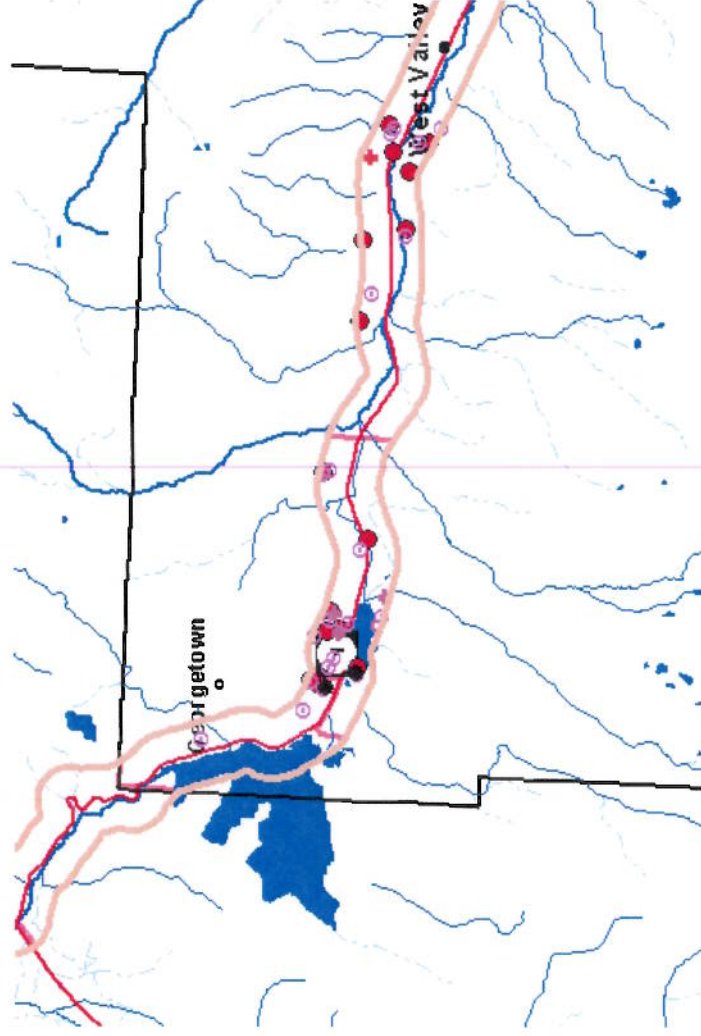
Identify

Abandoned Mine Site	Yes
Priority Abandoned Mines (Points for better visibility)	Yes
MBMG Mines Data	
Developed Deposit	
Producer	
Temporary Shutdown	
Past Producer	
Exp Prospect	
Raw Prospect	
Other	
Unknown	
Mining Districts	Yes
County	Yes
Highways	
Interstate Route	
U.S. Route	
Montana Route	
Secondary Route	Yes
Town Population	
0-100	
101-1,000	
1,001-5,000	
Over 5,000	Yes
Streams	
Major river or stream	
Other stream	
Un-named stream	Yes
Water Body	
Lake/Pond	
Swamp/Marsh	
Glacier	Yes

Abandoned and Inactive Mines

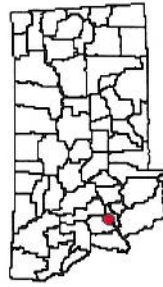
Selection Info: Highway = MT1, with a buffer of 0.5 Miles

Back To Data List Zoom IN OUT Zoom Factor 2 Pan Full Extent



This map is 17.0 miles wide.

Location Map



Data Reports

- [DEQ Abandoned Mines Inventory](#) [Click Here](#)
- [Bureau of Mines & Geology Mine Data](#) [Click Here](#)
- [Mining Districts Report](#) [Click Here](#)
- [Download Abandoned Mine Inventory Shape File](#)
- [Download Priority Abandoned Mine Points Shape File](#)
- [Download Abandoned/Inactive Mines Shape File](#)
- [Download Mining Districts Shape File](#)

Description

- [Click Here](#)
- [Click Here](#)
- [Click Here](#)

Identify Legend Metadata

Abandoned Mine Site
● Abandoned Mine Site Yes

Priority Abandoned Mines (Points for better visibility)
● Priority Abandoned Mines (Points for better visibility) Yes

MBMG Mines Data
+ Developed Deposit
+ Producer
+ Temporary Shutdown
+ Past Producer
+ Exp Prospect
+ Raw Prospect
+ Other
+ Unknown Yes

Mining Districts
 Mining Districts Yes

County
 County Yes


Highways
 Interstate Route
 U.S. Route
 Montana Route
 Secondary Route Yes

Town Population
○ 0-100
● 101-1,000
● 1,001-5,000
● Over 5,000 Yes

Streams
 Major river or stream
 Other stream
 Un-named stream Yes

EPA CERLIS Sites - PHASE 1

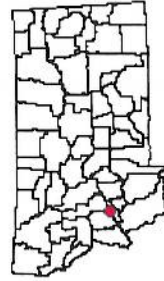
Selection Info: Highway = MT1, with a buffer of 0.5 Miles

Back To Data List Zoom IN OUT Zoom Factor 2  Pan Full Extent



This map is 4.25 miles wide. Photo Date: 8/14/2005

Location Map



Data Reports

[Cercilis List](#)

[Download EPA Superfund Sites Shape File](#)

Description

[Click Here](#)

Identify

Legend

Metadata

 EPA Superfund Site

Yes

 Hydrologic Unit

Yes

Highways

 Interstate Route


 U.S. Route

 Montana Route

 Secondary Route

Yes

Town Population

 0-100


 101-1,000

 1,001-5,000

 Over 5,000

Yes

Streams

 Major river or stream

 Other stream

 Un-named stream

Yes

Water Body

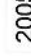
 Lake/Pond

 Swamp/Marsh

 Glacier

Yes

Select a Background Image:

2005 Color Photo 

You may view the background image by itself on the [Topofinder](#).

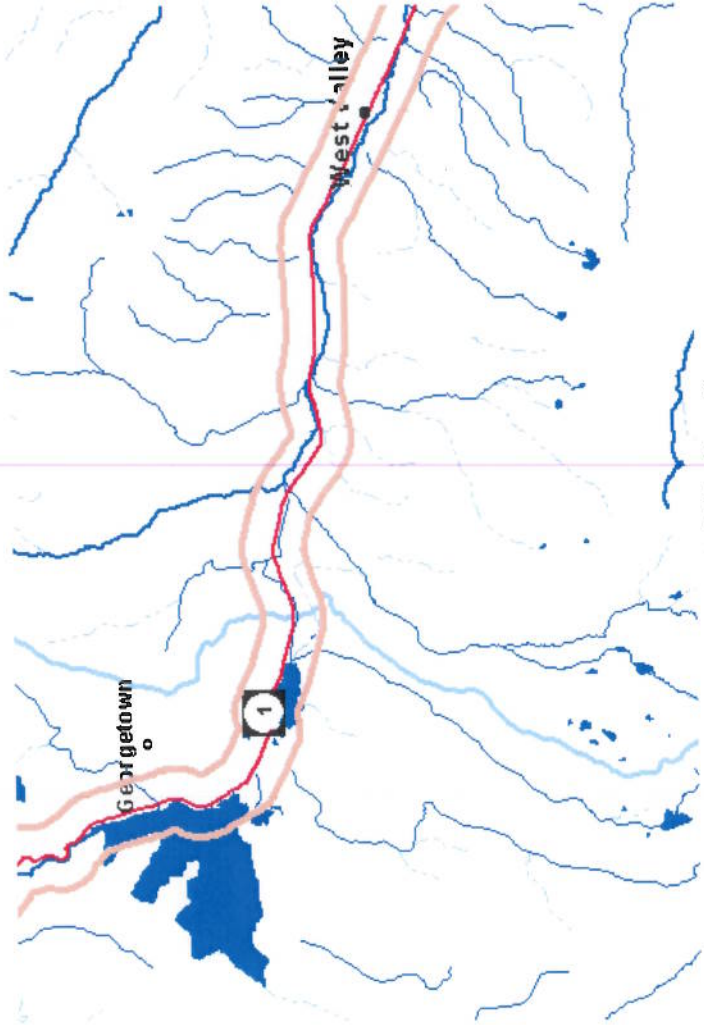
[Click here for a printable version](#)

[HELP](#)

EPA CERLIS Sites - Phase 2

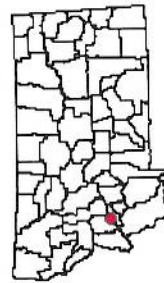
Selection Info: Highway = MT1, with a buffer of 0.5 Miles

Back To Data List Zoom IN OUT Zoom Factor 2 Pan Full Extent



This map is 17.0 miles wide.

Location Map



Data Reports

[Cerclis List](#)

Description

[Click Here](#)

[Download EPA Superfund Sites Shape File](#)

Identify

Legend

Metadata

EPA Superfund Site	Yes
Hydrologic Unit	Yes
Highways Interstate Route U.S. Route Montana Route Secondary Route	Yes
Town Population 0-100 101-1,000 1,001-5,000 Over 5,000	Yes
Streams Major river or stream Other stream Un-named stream	Yes
Water Body Lake/Pond Swamp/Marsh Glacier	Yes

Select a Background Image:

None

[Click here for a printable version](#)

[HELP](#)

EPA Toxic Release Inventory Sites - PHASE 1

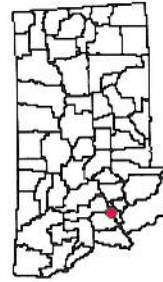
Selection Info: Highway = MT1, with a buffer of 0.5 Miles

Back To Data List Zoom IN OUT Zoom Factor 2 Pan Full Extent



This map is 4.25 miles wide. Photo Date: 8/14/2005

Location Map



Data Reports

[EPA Toxic Release List](#)

[Download EPA Toxic Release Inventory Shape File](#)

Description

[Click Here](#)

Identify Legend Metadata

Toxic Release Site	No
Hydrologic Unit	Yes
Highways Interstate Route U.S. Route Montana Route Secondary Route	Yes
Town Population 0-100 101-1,000 1,001-5,000 Over 5,000	Yes
Streams Major river or stream Other stream Un-named stream	Yes
Water Body Lake/Pond Swamp/Marsh Glacier	Yes

Select a Background Image:

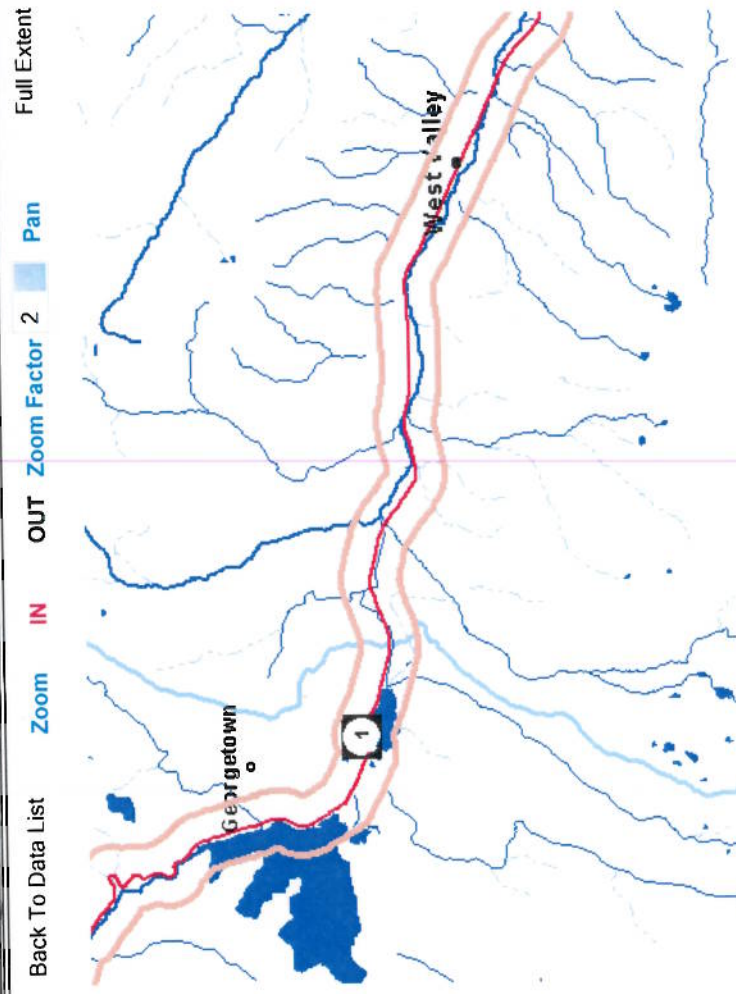
2005 Color Photo
 You may view the background image by itself on the [Topofinder](#).

[Click here for a printable version](#)

[HELP](#)

EPA Toxic Release Inventory Sites - PHASE 2

Selection Info: Highway = MT1, with a buffer of 0.5 Miles



Back To Data List Zoom IN OUT Zoom Factor 2 Pan Full Extent

Identify	Legend	Metadata
Toxic Release Site		No
Hydrologic Unit		Yes
Highways		Yes
Interstate Route		
U.S. Route		
Montana Route		
Secondary Route		
Town Population		Yes
0-100		
101-1,000		
1,001-5,000		
Over 5,000		
Streams		Yes
Major river or stream		
Other stream		
Un-named stream		
Water Body		Yes
Lake/Pond		
Swamp/Marsh		
Glacier		

Description

[Click Here](#)

Data Reports

[EPA Toxic Release List](#)

[Download EPA Toxic Release Inventory Shape File](#)

Location Map



Select a Background Image:

None

[Click here for a printable version](#)

[HELP](#)

Crude Oil Pipelines - Phase 1

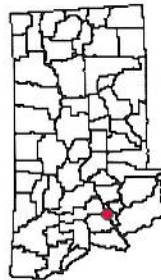
Selection Info: Highway = MT1, with a buffer of 0.5 Miles

Back To Data List Zoom IN OUT Zoom Factor 2 Pan Full Extent



This map is 4.25 miles wide. Photo Date: 8/14/2005

Location Map



Data Reports

[Pipeline Summary](#)

[Download Crude Oil Pipelines Shape File](#)

Description

[Click Here](#)

Identify Legend Metadata

Crude Oil Pipe line Yes

Hydrologic Unit Yes

Highways
 Interstate Route Yes
 U.S. Route
 Montana Route
 Secondary Route

Town Population
 0-100
 101-1,000
 1,001-5,000
 Over 5,000 Yes

Streams
 Major river or stream Yes
 Other stream
 Un-named stream

Water Body
 Lake/Pond Yes
 Swamp/Marsh
 Glacier

Select a Background Image:

2005 Color Photo

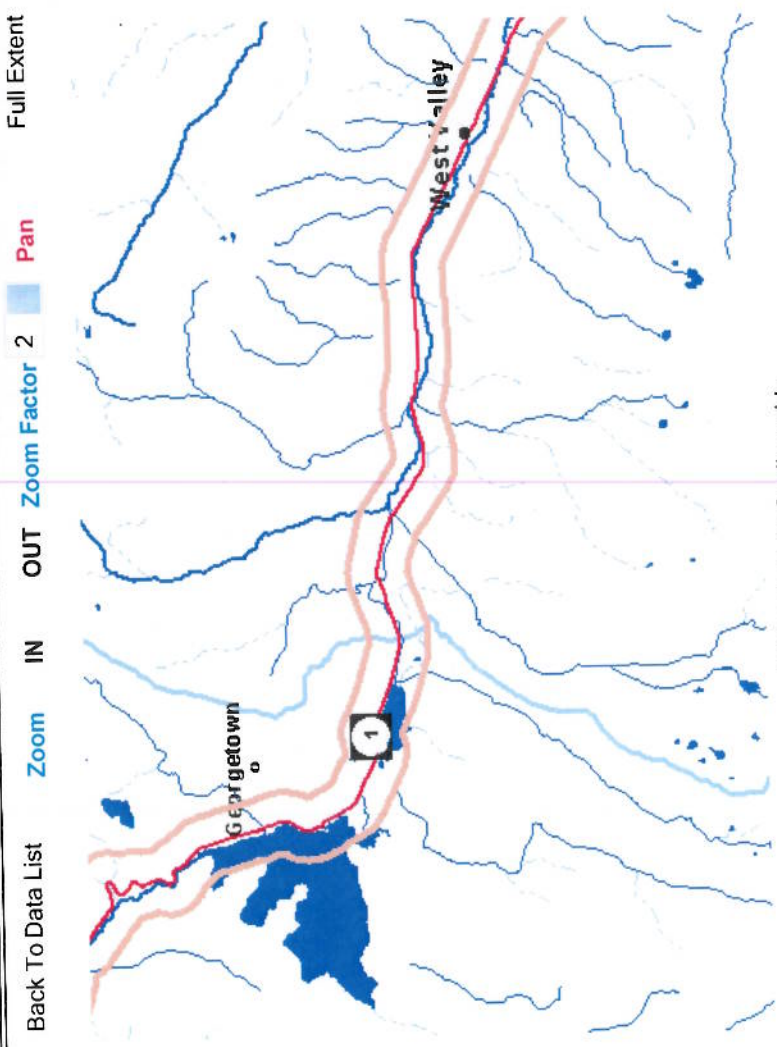
You may view the background image by itself on the Topofinder.

[Click here for a printable version](#)

[HELP](#)

Crude Oil Pipelines - PHASE 2

Selection Info: Highway = MT1, with a buffer of 0.5 Miles



This map is 17.0 miles wide.

Description
[Click Here](#)

Data Reports
[Pipeline Summary](#)

[Download Crude Oil Pipelines Shape File](#)



Identify	Legend	Metadata
	--- Crude Oil Pipeline	Yes
	□ Hydrologic Unit	Yes
Highways		
	— Interstate Route	Yes
	— U.S. Route	
	— Montana Route	
	--- Secondary Route	
Town Population		
	○ 0-100	
	● 101-1,000	
	⊕ 1,001-5,000	Yes
	⊙ Over 5,000	
Streams		
	— Major river or stream	Yes
	— Other stream	
	— Un-named stream	
Water Body		
	■ Lake/Pond	Yes
	▨ Swamp/Marsh	
	▩ Glacier	

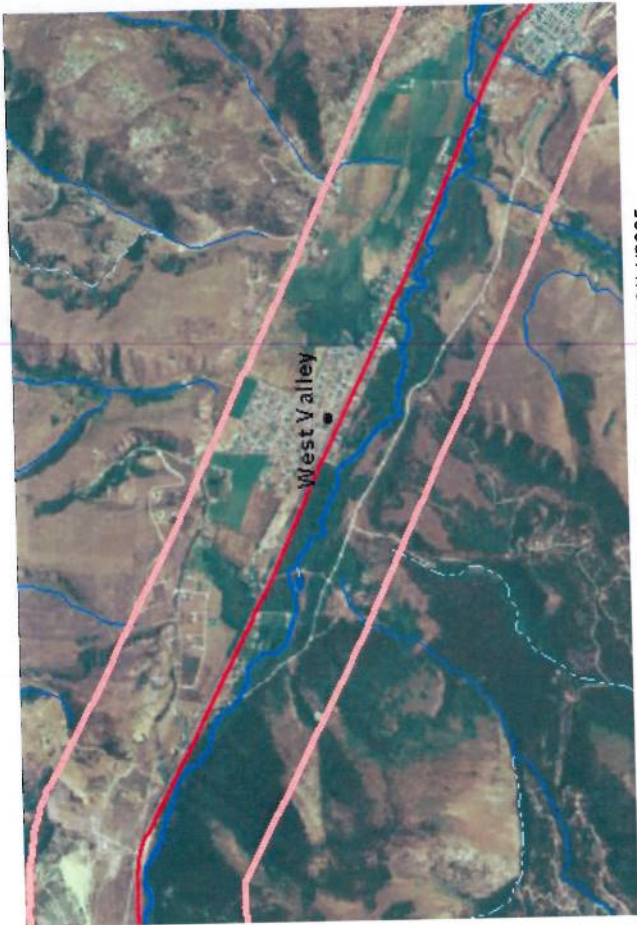
Select a Background Image:
 None

[Click here for a printable version](#)
[HELP](#)

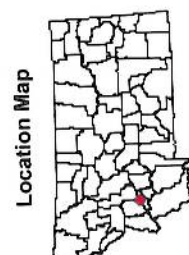
Landfills - PHASE 1

Selection Info: Highway = MT1, with a buffer of 0.5 Miles

Back To Data List Zoom IN OUT Zoom Factor 2 Pan Full Extent



This map is 4.25 miles wide. Photo Date: 8/14/2005



Location Map

Data Reports
Landfill Summary

[Download Landfills Shape File](#)

Description
[Click Here](#)

Identify Legend Metadata

Landfills

- Open
- Closed

Yes

Hydrologic Unit

Yes

Highways

- Interstate Route
- U.S. Route
- Montana Route
- Secondary Route

Yes

Town Population

- 0-100
- 101-1,000
- 1,001-5,000
- Over 5,000

Yes

Water Body

- Lake/Pond
- Swamp/Marsh
- Glacier

Yes

Streams

- Major river or stream
- Other stream
- Un-named stream

Yes

Select a Background Image:

2005 Color Photo

You may view the background image by itself on the Topofinder.

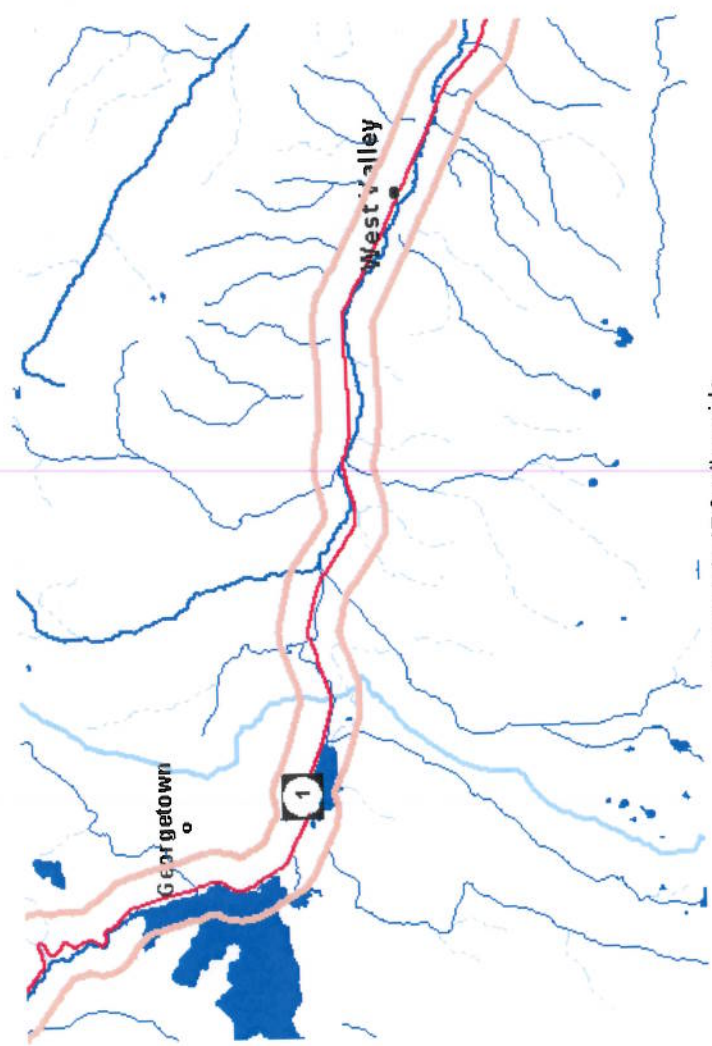
[Click here for a printable version](#)

[HELP](#)

Landfills - PHASE 2

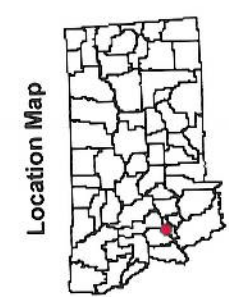
Selection Info: Highway = MT1, with a buffer of 0.5 Miles

Back To Data List Zoom IN OUT Zoom Factor 2 Pan



This map is 17.0 miles wide.

Data Reports
[Landfill Summary](#)
[Click Here](#)



[Download Landfills Shape File](#)

Identify Legend Metadata

Landfills
 Open
 Closed

Yes

Hydrologic Unit

Yes

Highways
 Interstate Route
 U.S. Route
 Montana Route
 Secondary Route

Yes

Town Population
 0-100
 101-1,000
 1,001-5,000
 Over 5,000

Yes

Water Body
 Lake/Pond
 Swamp/Marsh
 Glacier

Yes

Streams
 Major river or stream
 Other stream
 Un-named stream

Yes

Select a Background Image:

None

[Click here for a printable version](#)

[HELP](#)

Railroad Right-of-Way - PHASE 1

Selection Info: Highway = MT1, with a buffer of 0.5 Miles

Back To Data List Zoom IN OUT Zoom Factor 2 Pan Full Extent



This map is 4.25 miles wide. Photo Date: 8/14/2005

Location Map



Data Reports

[Railroad Summary](#)

[Download Railroads Shape File](#)

Description

[Click Here](#)

Identify Legend Metadata

.... Railroad		Yes
Hydrologic Unit		Yes
Highways		Yes
Interstate Route		
U.S. Route		
Montana Route		
Secondary Route		
Town Population		Yes
0-100		
101-1,000		
1,001-5,000		
Over 5,000		
Water Body		Yes
Lake/Pond		
Swamp/Marsh		
Glacier		
Streams		Yes
Major river or stream		
Other stream		
Un-named stream		

Select a Background Image:

2005 Color Photo

You may view the background image by itself on the [Topofinder](#).

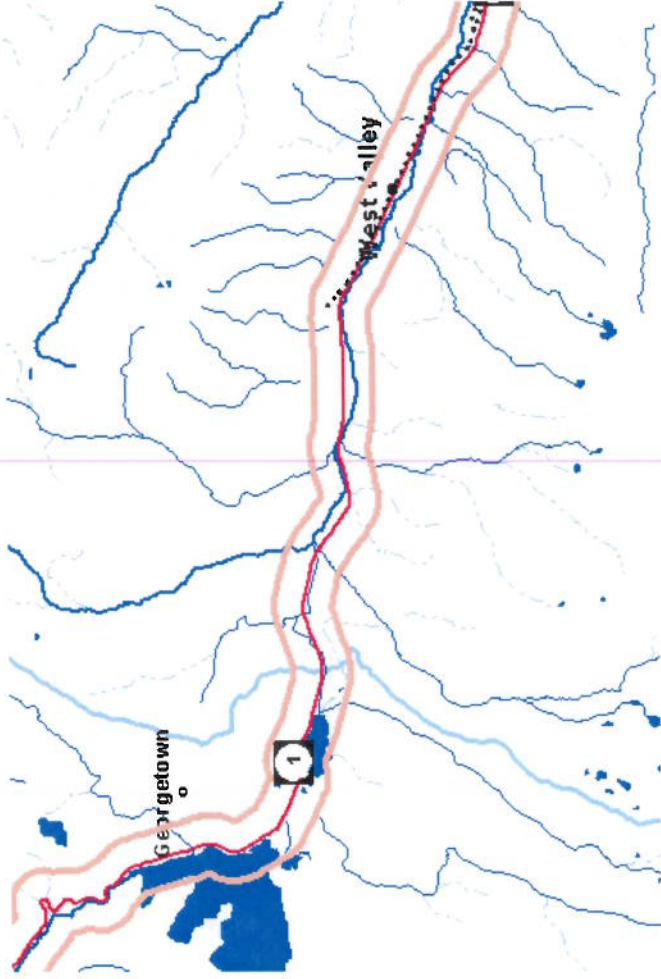
[Click here for a printable version](#)

[HELP](#)

Railroad Right-of-Way - PHASE 2

Selection Info: Highway = MT1, with a buffer of 0.5 Miles

Back To Data List Zoom IN OUT Zoom Factor 2 Pan Full Extent



This map is 17.0 miles wide.

Location Map



Data Reports

[Railroad Summary](#)

[Download Railroads Shape File](#)

Description

[Click Here](#)

Identify

Legend

Metadata

..... Railroad	Yes
Hydrologic Unit	Yes
Highways Interstate Route U.S. Route Montana Route ... Secondary Route	Yes
Town Population o 0-100 ● 101-1,000 ⊕ 1,001-5,000 ⊕ Over 5,000	Yes
Water Body Lakes/Pond Swamp/Marsh Glacier	Yes
Streams Major river or stream Other stream Un-named stream	Yes

Select a Background Image:

None

[Click here for a printable version](#)

[HELP](#)