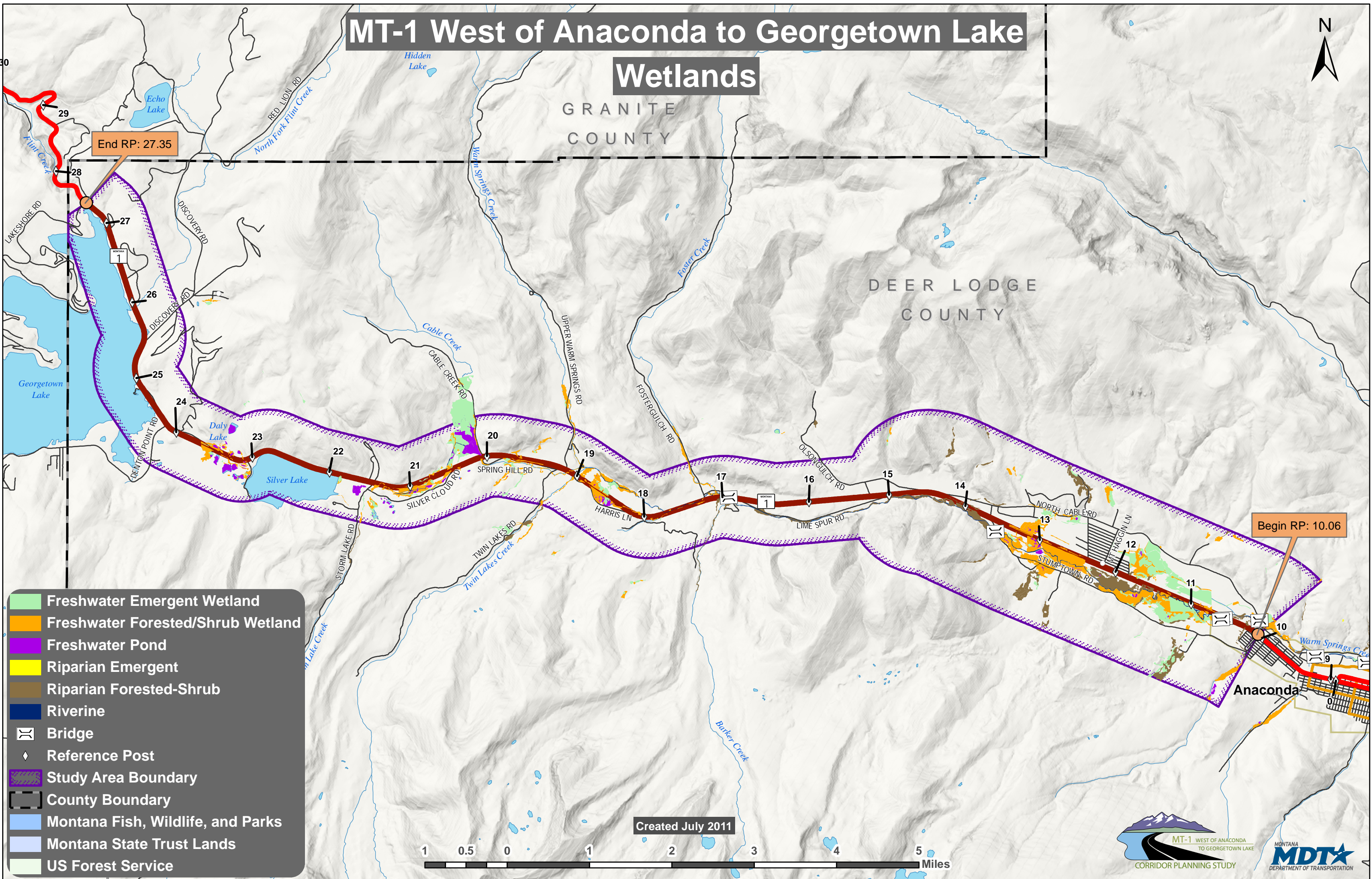


MT-1 West of Anaconda to Georgetown Lake

Wetlands

GRANITE
COUNTY

DEER LODGE
COUNTY



End RP: 27.35

Begin RP: 10.06

- Freshwater Emergent Wetland
- Freshwater Forested/Shrub Wetland
- Freshwater Pond
- Riparian Emergent
- Riparian Forested-Shrub
- Riverine
- Bridge
- Reference Post
- Study Area Boundary
- County Boundary
- Montana Fish, Wildlife, and Parks
- Montana State Trust Lands
- US Forest Service

Created July 2011

