

Motor Carrier Services

Safety Initiatives & Superloads

COMMERCIAL VEHICLE SAFETY PROGRAMS



MCS MISSION STATEMENT

MCS PROTECTS MONTANA'S AND THE FEDERAL GOVERNMENT'S INVESTMENT IN THE HIGHWAY SYSTEM AND ASSURES THE SAFETY OF THE TRAVELING PUBLIC THROUGH ENFORCEMENT OF STATE AND FEDERAL COMMERCIAL MOTOR CARRIER LAWS AND REGULATIONS.

SUPERLOAD CLASSES

<p><u>Class I</u></p> <p>Width exceeds 18 to 34 feet and/or Height exceeds 17 to 24 feet and/or Length exceeds 150 to 200 feet</p>	<p><u>Class II</u></p> <p>Width exceeds 34 feet and/or Height exceeds 24 feet and/or Length exceeds 200 feet</p>
<p><u>Class III</u></p> <p>Weight exceeds the maximum allowable weight, requiring approval by MDT's Bridge Bureau</p> <p>Does NOT exceed width of 18 feet, height of 17 feet, or length of 150 feet</p> <p>A Vehicle Weight Analysis through MCS will indicate the max weight & conditions imposed before a movement requires approval from MDT's Bridge Bureau.</p>	



Transformer Move from Anaconda to Butte

https://youtu.be/Opi_fUZru9k

MCS SUPERLOAD PROCESS

MCS's role is to facilitate the Superload application process. What does this mean for safety purposes?

- The purpose of the application process is to ensure infrastructure protection, safe movement, coordination between stakeholders, consistent regulation, and minimal to no impact to the traveling public.
- This is accomplished through solicited approvals from relevant jurisdictions and a variety of documents, including, but not limited to:
 - Submission of configuration and axle schematics
 - Route Surveys/Traffic Control Plans/Mapping of Route
 - Approval solicitations (Bridge Engineer Review, MDT District Maintenance Chief Review, County & City Review, etc.)
 - Utility Coordination
 - Construction Zone accommodations/Traffic Control Plans specific to work zones
 - Movement notification

INCREASE IN WIND ENERGY

There has been a substantial increase in the number of wind components being transported through Montana, along with an increase in component size. Here are some things MCS has done to help improve the safety of the traveling public.

- Increase the number of pilot vehicles required with each component.
- Montana Highway Patrol escorts for “mega-blade” transport.
- Email notifications before and when movement is being made.
- Special accommodations through construction zones (may have additional traffic control)
- Public awareness via Visual Message Boards, News releases, etc.
- Required Pilot Moves – MCS observing the moves while the carrier transports the load/component.



INNOVATIVE TECHNOLOGY DEPLOYMENT (ITD) GRANT

- FMCSA GRANT FUND AIMED AT ENHANCING CMV SAFETY THROUGH THE USE OF TECHNOLOGY
- MCS CVO BUREAU CHIEF CHAIRS WITH VARIOUS STAKEHOLDERS
- MONTANA UPDATES AND SUBMITS AN ITD PROGRAM PLAN TO THE FMCSA
- AWARDS ARE ALLOWED UP TO 2 MILLION PER YEAR PER APPLICATION

ITD TECHNOLOGY IN USE:

- 360 SmartView
- Mobile 360 SmartView trailers
- MOVE Trailers
- Automated Routing System
- Customer Credentialing System

Montana Ramp Screening Deployments

Ramp Screening currently utilized at 6 Interstate Sites:

- Butte Westbound Weigh Station on I-15 / I-90
- Billings Eastbound and Westbound Weigh Stations on I-90
- Haugan Eastbound and Westbound Weigh Station on I-90
- Lima Northbound Weigh Station on I-15



Montana Ramp Screening Deployments

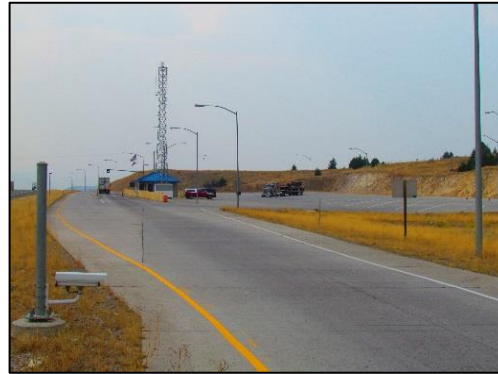
Mainline Screening currently utilized at 1 Non-Interstate Site:

-Broadus Eastbound and Westbound on US 212



SmartView 360 Cameras

- When vehicles approach the weigh station, they first pass through the 360 SmartView cameras

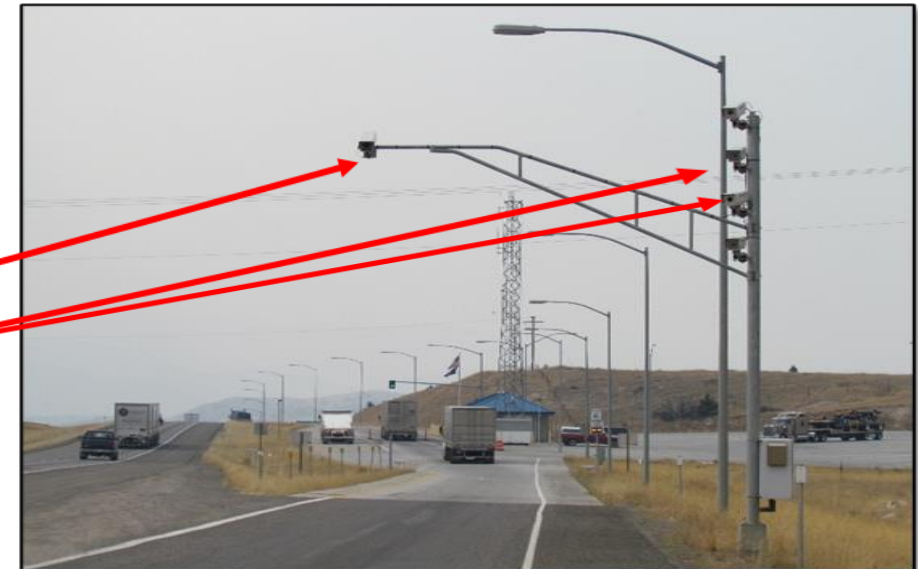


Ramp Screening Cameras



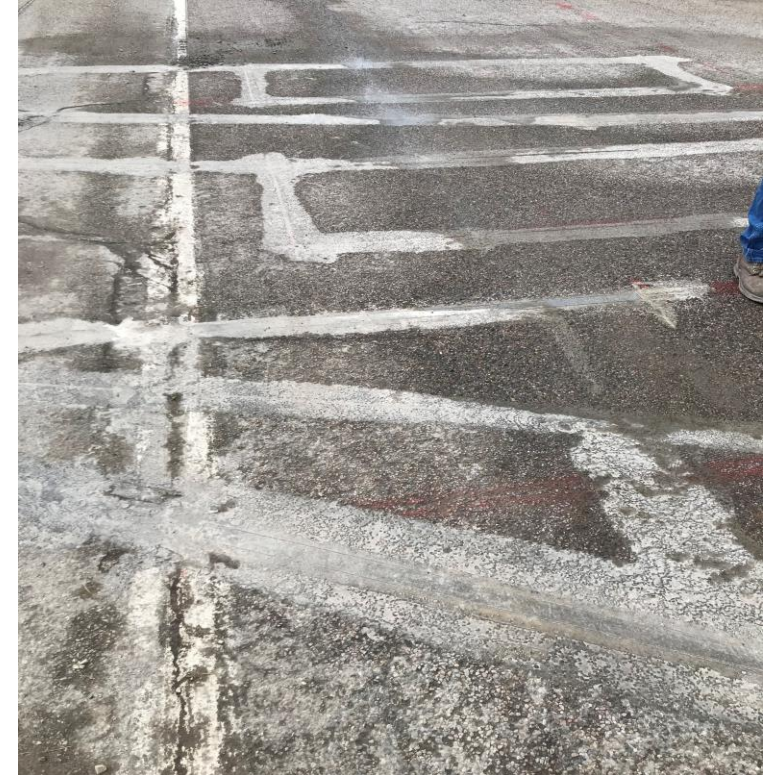
- Vehicle Trigger
- USDOT Reader (camera)

- Overhead Camera
- LPR (License Plate Reader) cameras



Thermal Imaging Cameras and Tire Compliance Sensors

When vehicles approach the weigh station, they first pass through the ramp screening cameras, shortly after the vehicle passes in-between two thermal imaging cameras or over tire compliance loops and sensors.



360 SmartView and ePART Integration

360 SmartView Butte WB September 22, 2017 | 8:51 AM Welcome mtuser | Log Off Count: 1939

Home Activity Search Reports Help

Plate: State: DOT: Submit Lanes viewed

			DEARBORN STEEL EXPRESS INC
			MCGREE TRUCKING
			SOUTHERN REFRIGERATED
			RED MOUNTAIN TRUCK LINES INC

Options Auto Scale

Vehicle Identification

System Information


Sessi	9/22/201	Modu	Connecte	
Vehic	Inspectio	Ambi	33.62 °F	
Vehic	2017092	%	87.20%	
Axes	5	Dew	29.01 °F	
Appr	Free		178.92	
L5	L4	L3	L2	L1
-	-	50	52	60
157	221	71	117	74
R5	R4	R3	R2	R1
Temp	Brake	Realti	Off	

Collected Data

- 09/22/2017 08:46:28 Inspection #56 Vehicle #20170922084628 5 Axes Alert
- 09/22/2017 08:47:07 Inspection #57 Vehicle #20170922084707 3 Axes Complete
- 09/22/2017 08:48:58 Inspection #58 Vehicle #20170922084858

Left 5					Left 4					Left 3					Left 2					Left 1				
OK					OK					Brake					Brake					OK				
OK					OK					OK					OK					OK				
Right 5					Right 4					Right 3					Right 2					Right 1				

360 SmartView Display



Weight per Axle:

1: 14.8K

2: 19.5K 38.7K

3: 19.2K

4: 17.9K 35.3K


5: 17.4K

Gross Weight: 89.0K

Bridge: Violation

Tire Anomaly Details:

Axle	OL	IL	IR	OR
1	✓			✓
2	✓	✓	✓	✓
3	✓	✓	✓	✓
4	✓	✓	✓	✓
5	⚠	✓	✓	✓




-

⚠ Tire Anomaly

No State Data Available

Over Height Not Able to Be Evaluated



Use Zero to Clear Corrected DOT

ISS = 98 S

No Federal OOSO

Active Fed Op Auth

Not Targeted By MCSIP

Carrier Vehicle OOS Rate: 18%

Carrier Driver OOS Rate: 1%

Active DOT#

Satisfactory Safety Rating

UCR OK

Operates As Carrier

Insurance OK

IFTA OK

View Details ▶ ✕

Submit

9/26/2023 9:07:48 AM

Mobile Screening Trailers





Going Forward

Montana's Innovative Technology Deployment (ITD) Future

- Provide Accurate Truck Parking Availability Information
- Seatbelt Screening Cameras
- Tire Screening with WIMs
- Weigh Station Ramp Monitoring Systems
- Virtual Weigh Station Vehicle Screening Systems
- Share Safety Data Between Weigh Station Locations
- Push Real Time Information To CMV Driver's Related to Incidents, Infrastructure, Construction, Weather Events, Road Conditions, Etc.

Questions?

Eric J. Belford
Bureau Chief, Commercial Vehicle Operations
Montana Department of Transportation
Motor Carrier Services Division
Office (406)444-6139
ebelford@mt.gov