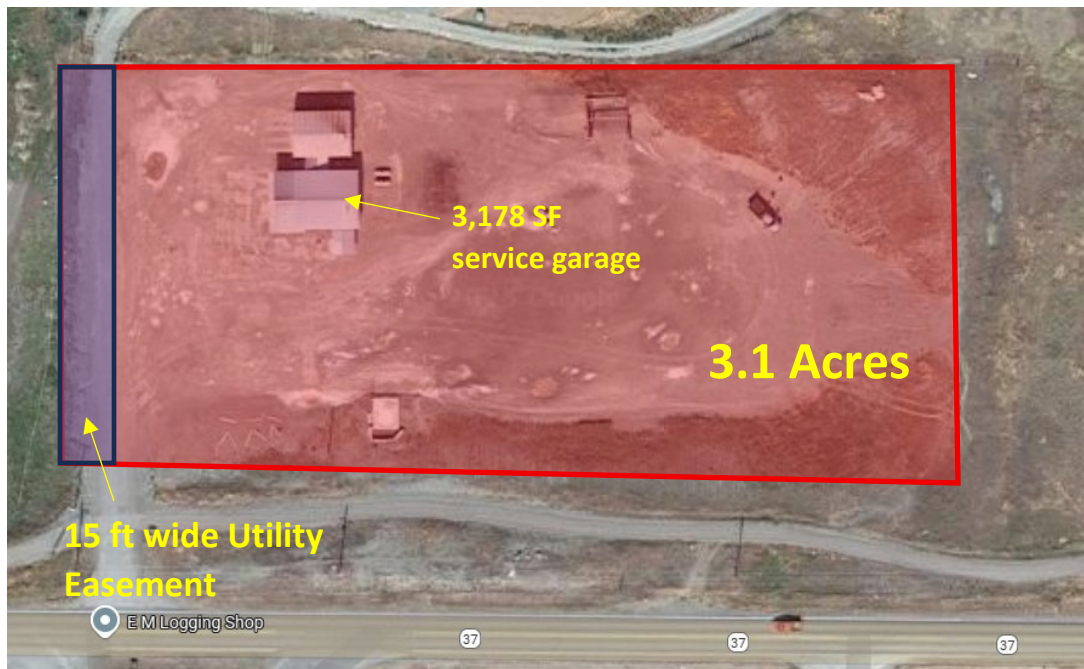


OPEN HOUSE: Tuesday, September 23, 2025, from 11:30am to 1:30pm

AUCTION: Online Auction Tuesday, October 7, 2025, opening at 9:00 a.m. and closing at 4:00 p.m. at the following link: www.govdeals.com/MDT

FOR SALE – 3.1 ACRES TRACT OF LAND INCLUDING STRUCTURE



Scan QR code for more information:



MDT Property for Sale – 0.25 miles west from US 93 and MT-37 intersection on the North side of MT-37

A tract of land in the SW $\frac{1}{4}$ SW $\frac{1}{4}$ of Section 2, Township 36 North, Range 27 West, P.M.,M., Lincoln County, Montana, as shown by the shaded area on the exhibit, consisting of 1 page attached hereto and made a part hereof, containing an area of 3.1 acres, more or less.

Structure: A 3,178 SF (total) service garage that has two 12x14 overhead garage doors, two 12x12 overhead garage doors, space heaters, one bathroom, and a 200 SF office space.

Appraised Value: \$458,950.00

MDT will begin the auction and bidding at 100% of the appraised value.

This property is being sold “AS IS – WHERE IS”

For complete information on bidding requirements, please review the **Terms and Conditions** document or call/email Jenna at (406)444-9272 or jbousman@mt.gov.

To view and/or obtain hard copies of the above additional information and the Terms and Conditions regarding this property, please visit MDT’s website https://www.mdt.mt.gov/business/real_estate.shtml