

MDT Construction Survey Microstation/Geopak Survey Startup User Help Guide

This program will detect network connections. If a direct network connection exists, the CADD standard files used by Microstation/Geopak Survey will automatically be updated unless the user chooses to use the local CADD standards. The user chooses to use the local CADD standards, the user will be prompted to choose whether or not to update the CADD standard files. If no network connection exists the program will simply start Microstation with no CADD standard file updates attempted. After performing any necessary file updates, the program automatically configures the necessary environment variables and Microstation site configuration file information to allow Microstation/Geopak Survey to start correctly for the current connection state. The program then automatically starts depending on the selection below.

To use the program please follow the instructions below:



1. Click on this icon on your desktop.

This is the new Construction Survey Startup:

The screenshot shows the 'Construction Survey Startup (Version 3.1.0)' dialog box. It is divided into several sections:

- Select Workgroup:** Radio buttons for Land Survey, Survey English (selected), and Survey Metric.
- Select Workspace:** Radio buttons for Geopak (selected) and Openroads.
- Select Startup Option:** Radio buttons for Start Microstation, Start Geopak* (selected), and Start OpenRoads*.
- Select Environment:** Radio buttons for Development, Test, and Production (selected).

A red text notification reads: *** Only use the Start Geopak or Start OpenRoads option if you need to use the design tools as starting Geopak or OpenRoads will execute a license and can affect MDT's overall product cost.** Red arrows point from this notification to the 'Start Geopak*' and 'Start OpenRoads*' options.

Below these sections, a summary line reads: **Select Workgroup Select Geopak, Start Geopak, and Production**

The bottom section is titled **Select The Nearest CADD Standard Share** and contains two columns of radio buttons:

- District/HQ Locations:** Billings, Butte, Glendive, Great Falls, Helena (selected), Missoula.
- Area Locations:** Bozeman, Havre, Kalispell (MDTKALISBZ001), Kalispell, Lewistown, Miles City, Wolf Point.

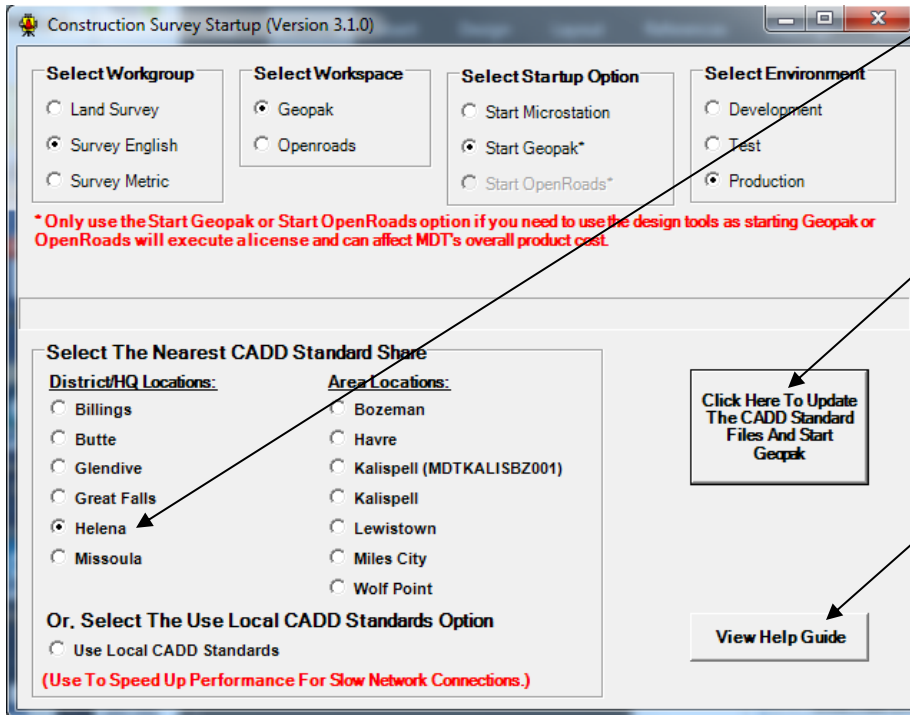
Below this is the option: **Or, Select The Use Local CADD Standards Option** with a radio button for **Use Local CADD Standards**. A red text note below reads: **(Use To Speed Up Performance For Slow Network Connections.)**

On the right side, there are two buttons: **Click Here To Update The CADD Standard Files And Start Geopak** and **View Help Guide**.

PLEASE TAKE NOTE TO THE NOTIFICATION:

***Only use the Start Geopak or Start Openroads option if you need to use the design tools as starting Geopak or OpenRoads will execute a license and can affect MDT's overall production cost.**

The program will automatically set the nearest CADD standard share option based on the current computer name (e.g., MDTHLN##### is set to Helena).

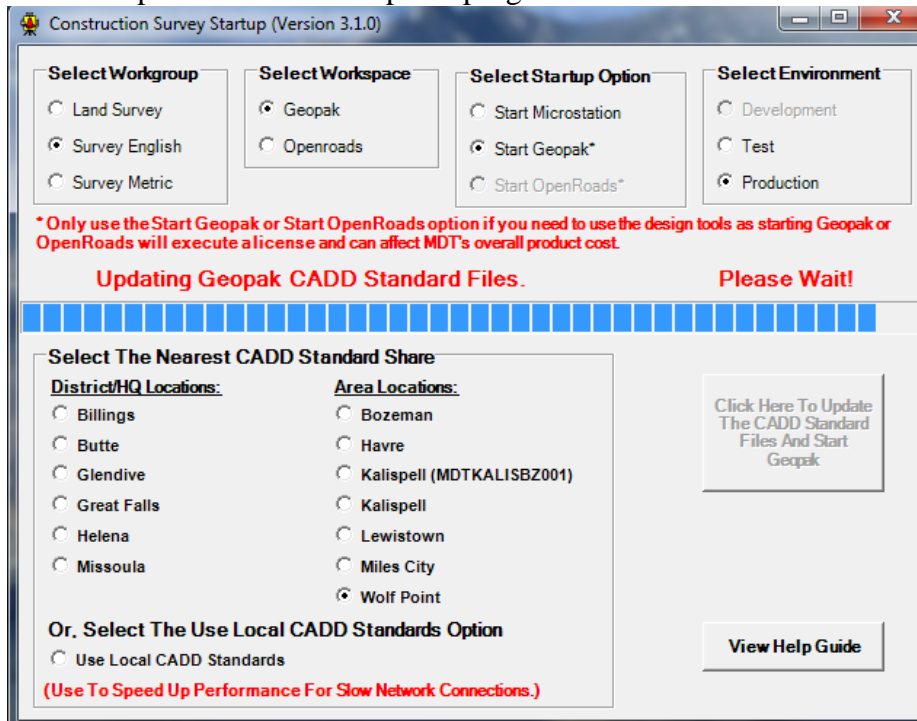


3a. Select the desired CADD standard share to use if different from the current selected share.

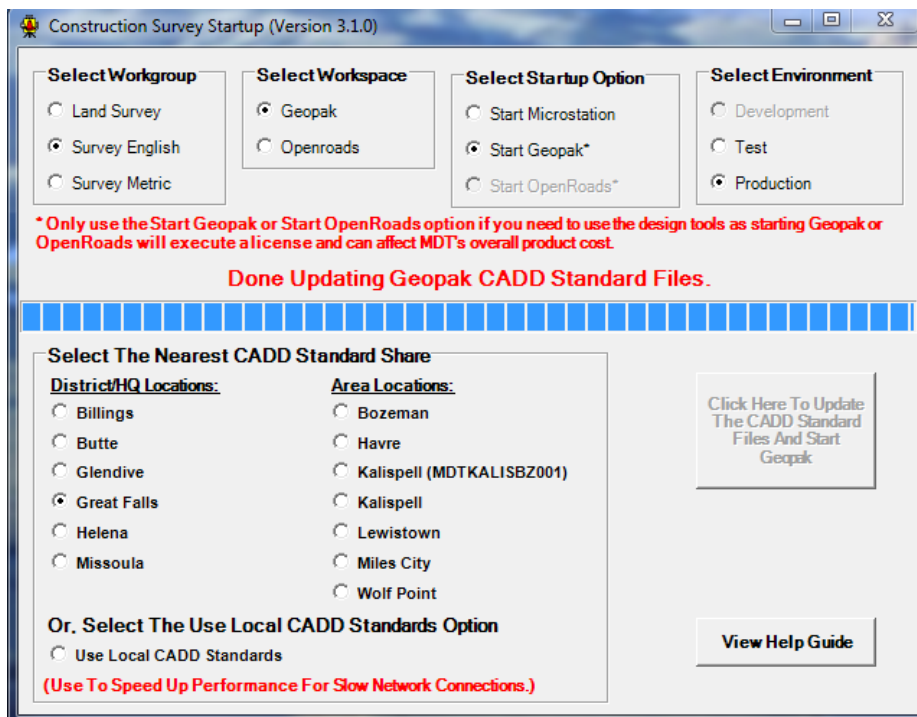
4a. Then, click on this command button to start the CADD standard files update and Microstation startup process. The progress will be displayed as shown on page 3.

Click on the View Help Guide command button to view this help guide.

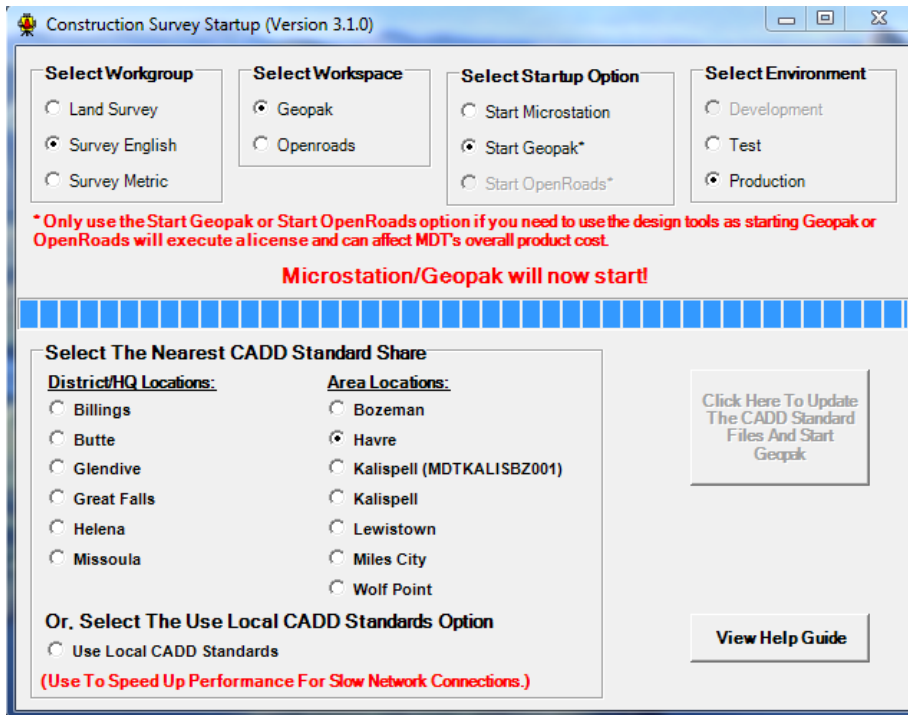
After selecting the Update the CADD Standards and Start Microstation command button the form will update to show the update progress as shown below.



This banner indicates that the CADD standard files are being updated. The progress bar indicates the percent complete.

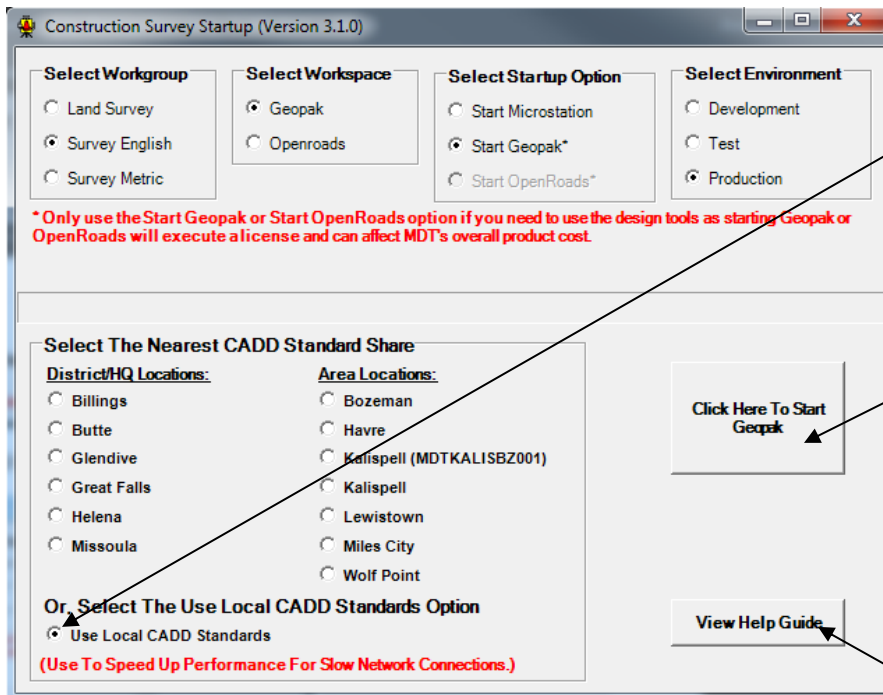


The banner will update to indicate completion of the CADD standard files update in preparation for setting the environment variable and Microstation site configuration file for Microstation startup.



The banner will then update to indicate that the application is starting Microstation/Geopak Survey. The window will automatically close once the Microstation startup has begun.

Alternatively, select the Use Local CADD Standards option.



3b. For slow network connections, select the Use Local CADD Standards option to start Microstation.

4b. Then, click on this command button to start the Microstation startup process. The following window will open prompting to update the CADD Standards.

Click on the View Help Guide command button to view this help guide.

The banner will then update to indicate that the application is starting Microstation/Geopak Survey. The window will automatically close once the Microstation startup has begun.