

Load Posting Interactive Map HELP GUIDE

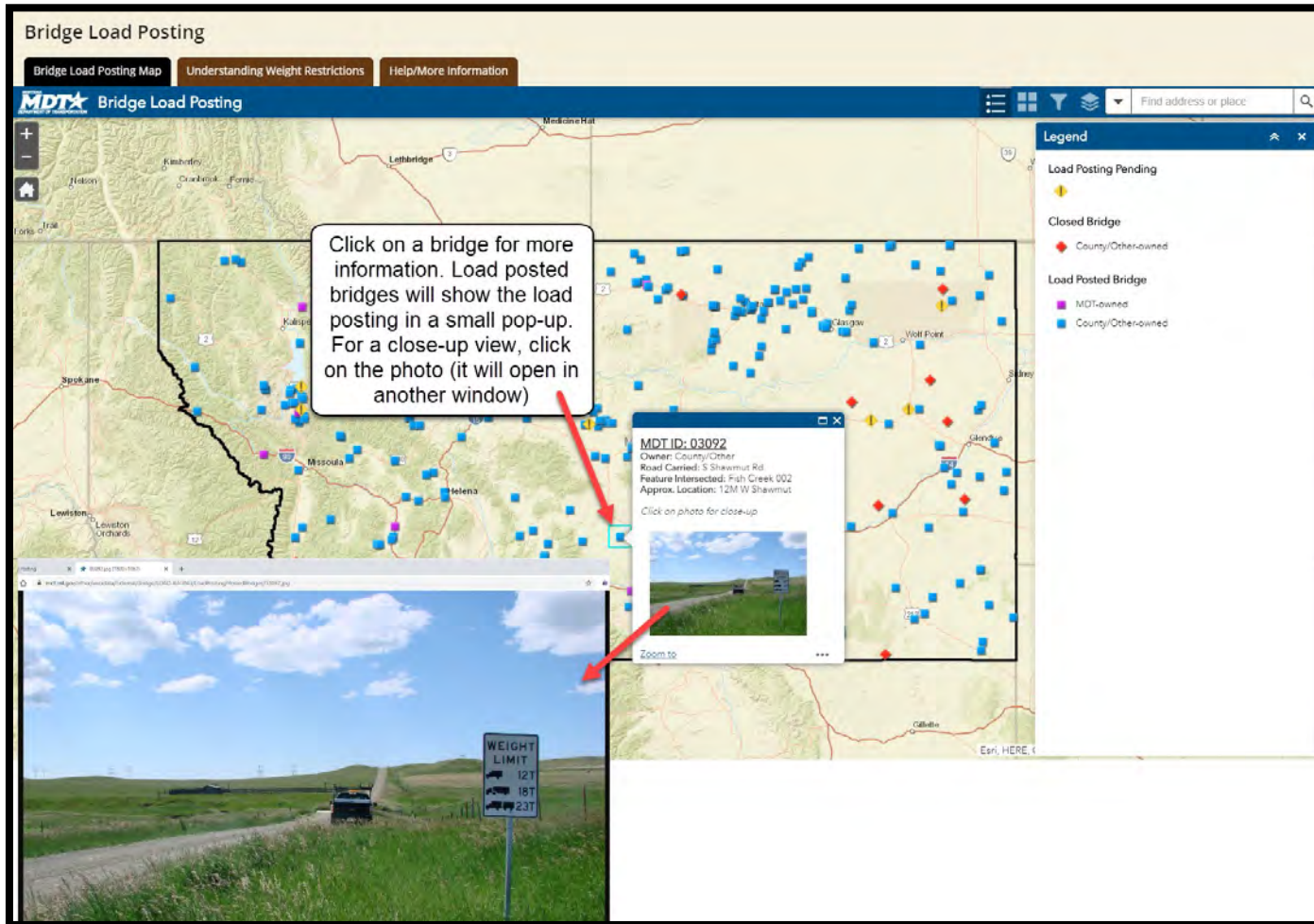
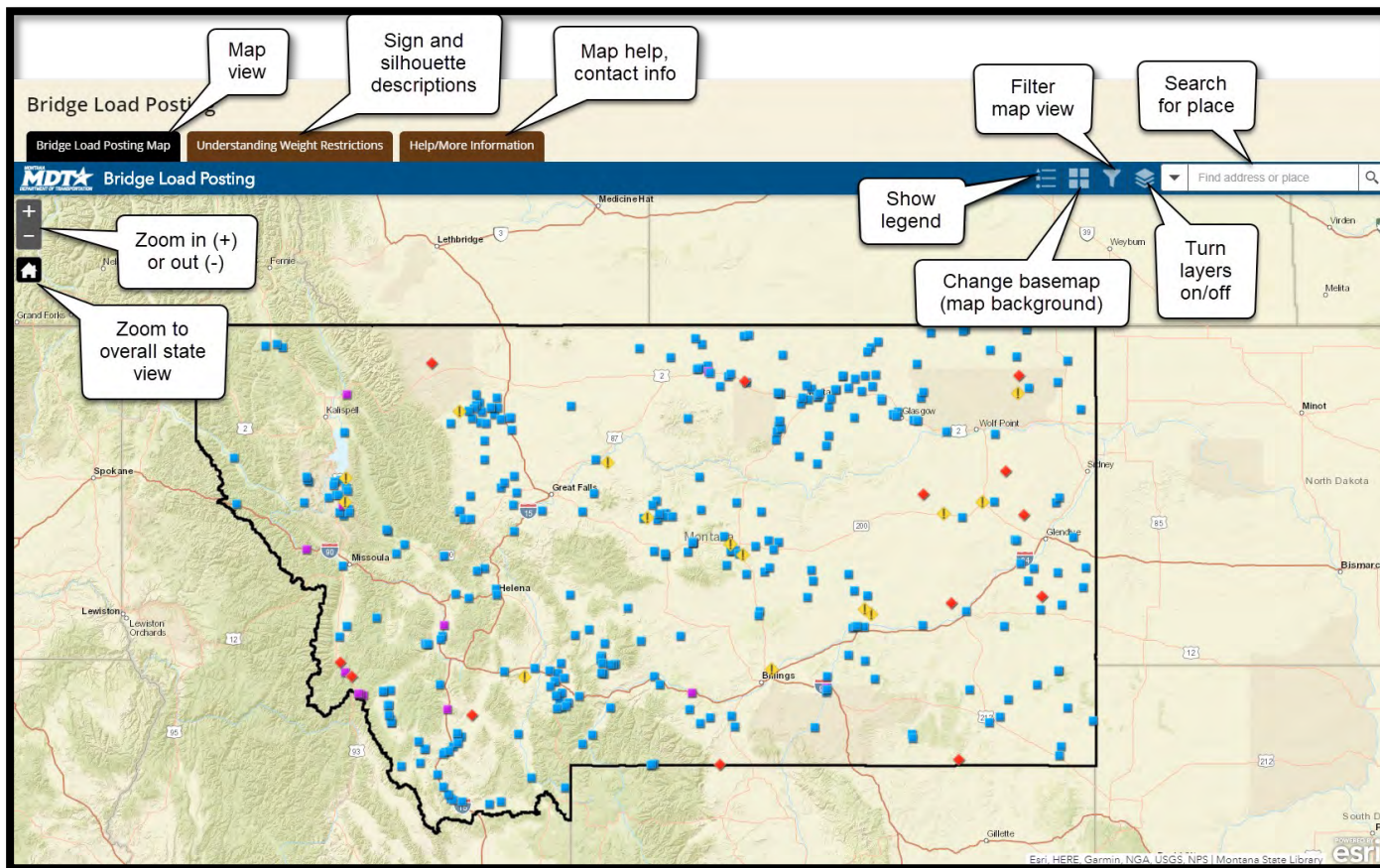
For best user experience, Google Chrome browser is recommended to access the web map

SECTIONS

◇ General Navigation - - - - -	2
◇ Map View Tab	
* Legend - - - - -	3
* Basemap Gallery - - - - -	4
* Filter - - - - -	5
* Layer List - - - - -	6
◇ Understanding Weight Restrictions Tab - - - - -	7
◇ Map Help Tab - - - - -	8



GENERAL NAVIGATION



LEGEND

Bridge Load Posting

Bridge Load Posting Map Understanding Weight Restrictions Help/More Information

MDTA
Montana Department of Transportation

Bridge Load Posting

Find address or place

Click "Legend" icon to show symbols and their meaning

Legend

- Load Posting Pending
Yellow diamond symbol
- Closed Bridge
Red diamond symbol
- Load Posted Bridge
 - MDT-owned
Purple square symbol
 - County/Other-owned
Blue square symbol

Tip: click to hide or un-hide window

BASEMAP GALLERY

Bridge Load Posting

Bridge Load Posting Map Understanding Weight Restrictions Help/More Information

MDTA Bridge Load Posting

Click "Basemap Gallery" icon to show alternate map backgrounds. Click on a basemap to apply it to the map.

Basemap Gallery

- Dark Gray Canvas
- Imagery
- Imagery Hybrid
- Light Gray Canvas
- MDT Active Projects Basemap
- National Geographic
- Navigation
- Streets
- Topographic
- Topographic MDT

FILTER

Bridge Load Posting

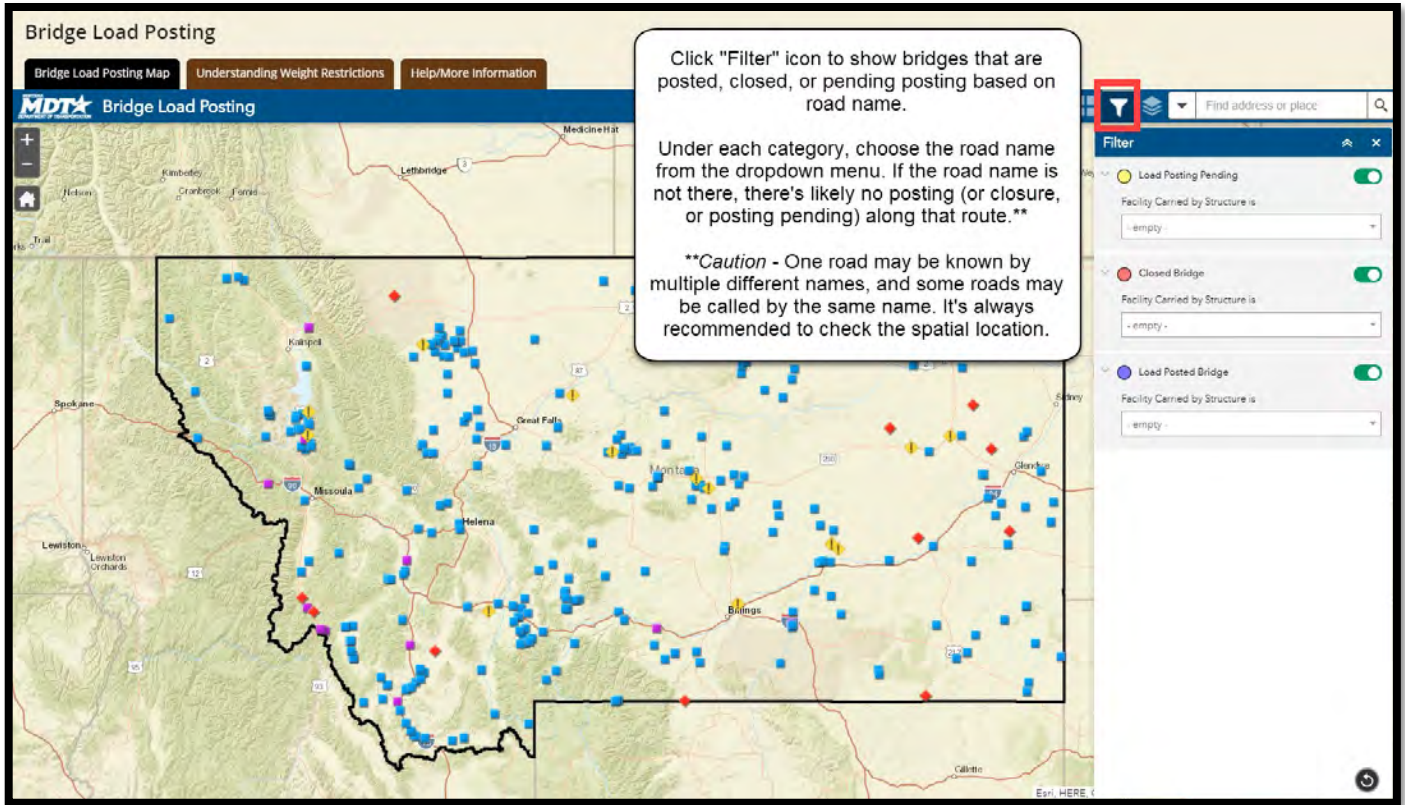
Bridge Load Posting Map Understanding Weight Restrictions Help/More Information

MDT* Bridge Load Posting

Click "Filter" icon to show bridges that are posted, closed, or pending posting based on road name.

Under each category, choose the road name from the dropdown menu. If the road name is not there, there's likely no posting (or closure, or posting pending) along that route.**

**Caution - One road may be known by multiple different names, and some roads may be called by the same name. It's always recommended to check the spatial location.

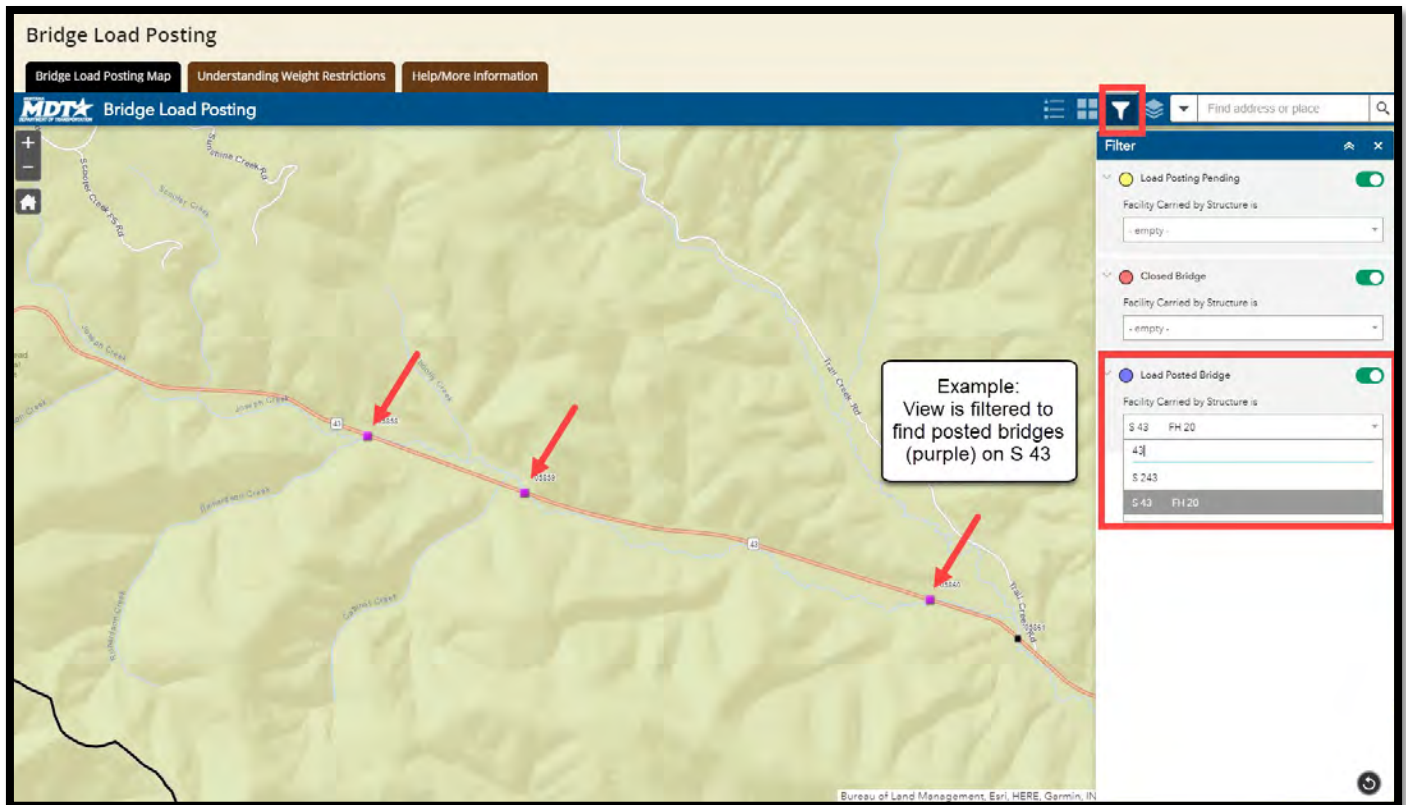


Bridge Load Posting

Bridge Load Posting Map Understanding Weight Restrictions Help/More Information

MDT* Bridge Load Posting

Example: View is filtered to find posted bridges (purple) on S 43



LAYER LIST

The screenshot shows the 'Bridge Load Posting' web application. At the top, there are navigation tabs: 'Bridge Load Posting Map', 'Understanding Weight Restrictions', and 'Help/More Information'. The main map area displays a geographical view of a region with various colored markers (blue squares, red diamonds, yellow triangles) representing different bridge categories. On the right side, a 'Layer List' panel is open, showing three checked items: 'Load Posting Pending', 'Closed Bridge', and 'Load Posted Bridge'. A red box highlights the 'Layer List' icon in the top right corner of the map interface. A white text box with a black border is overlaid on the map, providing instructions on how to use the Layer List.

Bridge Load Posting

Bridge Load Posting Map Understanding Weight Restrictions Help/More Information

MDTA Bridge Load Posting

Click "Layer List" icon to turn layers on or off

There are three separate layers (or "categories") - bridges that are posted, closed, or pending posting.

If the box is checked, the layer is **on** and that category of bridges **will show** on the map.

If the box is not checked, the layer is **off** and that category of bridges **will not show** on the map.

Layer List

- Load Posting Pending
- Closed Bridge
- Load Posted Bridge

UNDERSTANDING WEIGHT RESTRICTIONS

Bridge Load Posting

Bridge Load Posting Map | **Understanding Weight Restrictions** | Help/More Information

1 Bridge Load Posting Program

2 Interpreting Vehicle Types and Load Posting Signs

Click tab on top for sign and silhouette descriptions

Select tab on the side for information on MDT's Load Posting Program

Bridge load posting means restricting vehicle weight on Montana's bridges

Bridge weight restrictions are required when the engineering analysis of a bridge, known as a load rating, indicates that it cannot carry standard, legal loads. Bridge load posting signs show the weight restrictions, indicating maximum weights for different vehicle types.

Weight restrictions are required and important for Montana's bridges

Not all bridges were designed to carry today's standard legal loads, and some bridges have deteriorated over time. Bridge weight restriction signs are posted to keep motorists and their vehicles safe. They are also posted to prevent certain loads from crossing and overstressing the bridge, which could lead to both visible and hidden damage, and eventual closure or failure of the bridge. **A posted bridge is safe to use**, but the weight of certain vehicles must be limited accordingly.

The Montana Department of Transportation (MDT) needs your help to prevent overload and damage, maintain the integrity of the bridge, and safeguard bridge longevity.

Evolution of the trucking industry means changes to weight restrictions

In the last decade, manufacturers have developed specialized hauling vehicles (SHVs) that are capable of legally carrying heavy, concentrated loads. These vehicles have been found to overstress bridges more than standard vehicle types of the past. To account for their increasing presence and ensure safe operation, the Federal Highway Administration (FHWA) designated SHVs as standard, legal loads that all States are required to use in bridge analysis and posting.

Specialized Hauling Vehicles (SHVs)

SHVs are single-unit vehicles with multiple, closely spaced axles. Examples of SHVs include construction vehicles, dump trucks, solid waste trucks and other hauling trucks.


Bridge Load Posting

Bridge Load Posting Map | **Understanding Weight Restrictions** | Help/More Information

1 Bridge Load Posting Program

2 Interpreting Vehicle Types and Load Posting Signs

Or how to interpret silhouettes and new signs




Load Posting Signs

Load posting, or "Weight Limit" signs indicate the maximum gross vehicle weight (GVW), including equipment or loads being towed by the vehicle, that can safely cross the bridge. Weight limit signs cannot show every possible vehicle on the road, so three standard silhouettes are used to represent common truck configurations. The number of axles shown on each silhouette is only an example and is not to be interpreted as the only possibility for that vehicle type; actual axle numbers will vary. Descriptions are provided to help interpret vehicle types that are represented by each silhouette.

Single Limit Sign

The GVW for any vehicle (including cars, trucks and agricultural vehicles) is limited regardless of its number of axles or axle configuration. The gross weight of the vehicle including its separate trailers must be less than or equal to the limit on the sign.



Three Silhouette Sign

The weight that corresponds to each silhouette is the maximum GVW allowed to cross the bridge for each truck type. These signs apply to single-unit and combination vehicles, including: box trucks, moving trucks, dump and concrete trucks, buses, tractor-trailers/semitrailers, flatbed trucks with trailers, etc.

WEIGHT LIMIT	Silhouette
21T	[Single unit silhouette]
27T	[4 AXLES silhouette]
30T	[5 AXLES silhouette]
32T	[6-7 AXLES silhouette]
34T	[Tractor-trailer silhouette]
40T	[Tractor-trailer silhouette]

Single Silhouette Sign


Maximum GVW is based on the vehicle's number of axles. Axle numbers may be grouped differently from bridge to bridge. **These signs only apply to single-unit vehicles**, such as: box trucks, moving trucks, dump and concrete trucks, buses, etc.

WEIGHT LIMIT	Silhouette
34T	[6-7 AXLES silhouette]
27T	[4 AXLES silhouette]
30T	[5 AXLES silhouette]
32T	[6-7 AXLES silhouette]

Vehicle Types


Truck

The first silhouette represents a single-unit vehicle, which is any vehicle with a trailer permanently attached to the tractor, regardless of the number of tractors, axles or axle configuration.




Tractor + Trailer

The second silhouette represents a two-unit vehicle, which is any combination of tractor and trailer that can be easily separated. These vehicles are sometimes referred to as semi-trucks.



Truck + Trailer Combination

The third silhouette represents a two or three-unit vehicle with two cargo areas. These may include tractor-trailer-trailer or truck-trailer combinations.



MAP HELP

Click tab on top for map help and contact information

Bridge Load Posting

Bridge Load Posting Map

Understanding Weight Restrictions

Help/More Information

Help Guide

Consult this [PDF](#) for help using the Bridge Load Posting web tool.

For more information, please visit the [MDT Bridge Load Posting Program site](#).

For the best user experience when accessing the Bridge Load Posting tool, we recommend Google Chrome browser.

For questions or comments contact:

- Project Hotline at 1-888-824-8445
MDTbridgeloadingposting@mt.gov
- Mary Smith at (406) 444-7641
msmith@mt.gov
- Technical Help – Brian Klapstein at (406) 444-7289
bklapstein@mt.gov

Contacts may be reached by Mail:

PO Box 201001
Helena MT 59620-1001

MDT attempts to provide reasonable accommodations for any known disability that may interfere with a person participating in any service, programs, or activity of the Department. Alternative accessible formats of this map will be provided upon request. For further information, call (406) 444-6331 or TTY (406) 444-7696 or 1-800-355-7592.

This map is provided "as-is" without warranty of any kind. The Montana Department of Transportation makes no representations or warranties whatsoever with respect to the accuracy or completeness of this map and assumes no responsibility for the suitability of this map for a particular purposes; and MDT will not be liable for any damages incurred as a result of errors in this service.

[Privacy & Security](#)