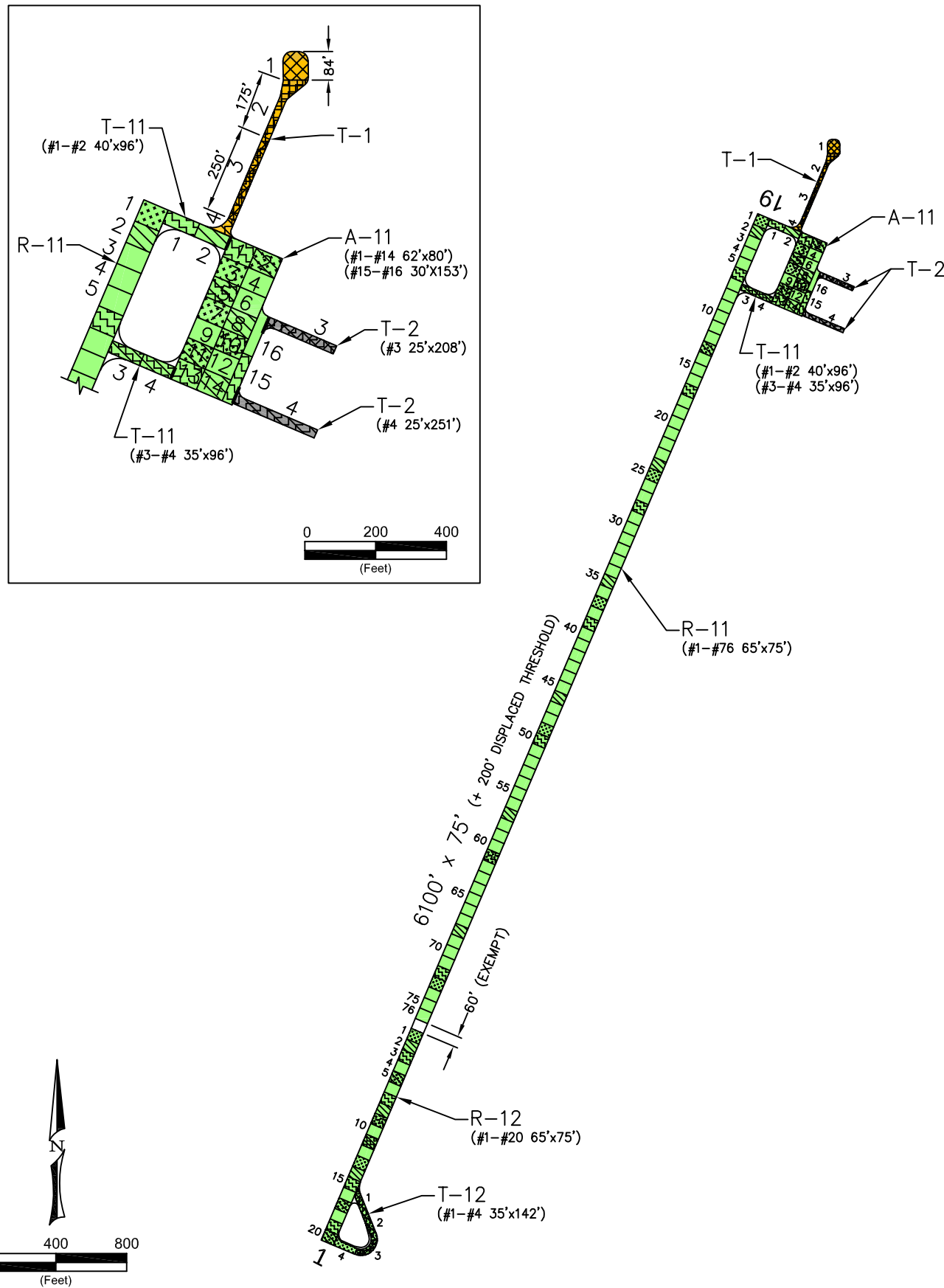


WHITE SULPHUR SPRINGS



PAVEMENT STRENGTH SURVEY/PAVEMENT CONDITION SURVEY

PAVE. IDENT.	SOIL CLASS	SUB GRADE CLASS	SUBBASE COURSE	BASE COURSE	SURFACE COURSE	OVERLAY	PAVEMENT STRENGTH			REMARKS
							MAX. GROSS LOAD (LBS)			
							SINGLE	DUAL	DUAL TAN.	
RUNWAYS										
R-11		CBR=3.0		NEW 3" P-208 OVER 2.5" ASPH. + 5" P-208	3.5" P-403	P-608	16,500			1,2,3,4,5,6,7
R-12		CBR=3.0		5" P-208	4" P-401	3" P-403, P-608	16,500			2,3,4,5,6,7
TAXIWAYS										
T-1		CBR=3.0		8" P-208		P-609	12,500			1,2,3,4,7
T-2		CBR=3.0		4" P-208		3" P-401	12,500			2,3,4,7
T-11		CBR=3.0	P-152	10" P-208	3.5" P-401	P-608	16,500			6,7
T-12		CBR=3.0	P-152	5" P-208	2" P-403	P-608	16,500			2,3,4,5,7
APRONS										
A-11		CBR=3.0		10" P-208	3.5" P-401	P-608	16,500			6,7

REMARKS:

- ADAP-01, 1979
- AIP-001-1992, RUNWAY EXTENSION AND OVERLAY ALL PAVEMENTS.
- AIP-002-2003, RUNWAY PAVEMENT MAINTENANCE.
- AIP-003-2005, RUNWAY PAVEMENT MAINTENANCE (CRACK SEAL).
- ARRA-005-2009, REHABILITATE RUNWAY 1/19
- AIP-006-2009, WIDEN RUNWAY 7.5' EA. SIDE (10" P-208, 3.5" P-403); MILL AND PAVE (3" P-403) EXISTING 60' RUNWAY; RECONSTRUCT APRON (A-11) AND CONNECTOR TAXIWAYS (T-11); OVERLAY AND WIDEN TURNAROUND (T-12).
- AIP-009-2015, CRACK SEAL, SEAL COAT, AND REMARK ALL PAVEMENTS [INSPECTED AFTER MAINTENANCE PROJECT].

LEGEND ■ 2006 SURVEY AREA ▨ 2009 SURVEY AREA ▩ 2012 SURVEY AREA ▪ 2015 SURVEY AREA ▫ 2018 SURVEY AREA ■ MAINTAIN: PCI > 60 ▨ TRANSITION: PCI 45 TO 60 ▩ RECONSTRUCT: PCI < 45	DATE OF PAVEMENT STRENGTH SURVEY:	JULY 1, 2010	MONTANA AVIATION SYSTEM PLAN 2018 UPDATE - PAVEMENT CONDITION INDEXES WHITE SULPHUR SPRINGS AIRPORT (756) Date: _____ Prepared For: _____ Prepared By: _____ DECEMBER 2018
	EVALUATED BY:	G. GATES	
	DATE OF MOST RECENT PAVEMENT CONDITION SURVEY:	OCT. 16, 2018	
	EVALUATED BY:	N. SCHROHT	
LOCATION:	WHITE SULPHUR SPRINGS, MT		

WHITE SULPHUR SPRINGS



A-11, Overview



A-11, Bleeding



R-11, Overview



R-11, Surface Cracks



R-12, Overview



R-12, Patch-Cleanout



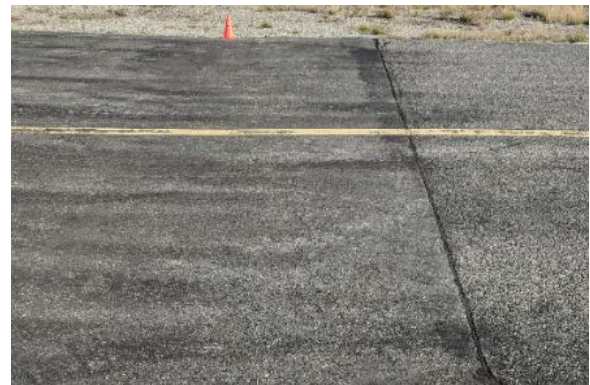
T-1, Overview



T-1, Crack Sealed



T-2, Overview



T-2, Patch

WHITE SULPHUR SPRINGS AIRPORT

Branch: 23A APRON

A-11

Length: 437 LF **Width:** 190 LF **Area:** 78,951 SF **Last Const:** 2010 **Family:** ACAM
From: T-2 **To:** T-11 **Surface:** AC

Inspections

Samples Surveyed: 5 **Total Samples:** 16 **Last Inspection Date:** 10/16/2018 **PCI:** 90

Sample # 1	Distress Description WEATHERING RAVELING	Severity L H	Quantity 4960 SF 1 SF	Area: 4,960 SF
Sample # 5	Distress Description WEATHERING	Severity L	Quantity 4960 SF	Area: 4,960 SF
Sample # 10	Distress Description WEATHERING PATCHING BLEEDING	Severity L L NA	Quantity 4960 SF 11.25 SF 1 SF	Area: 4,960 SF
Sample # 13	Distress Description LONGITUDINAL/TRANSVERSE CRACKING RAVELING WEATHERING	Severity L H L	Quantity 50 LF 2 SF 4960 SF	Area: 4,960 SF
Sample # 15	Distress Description WEATHERING PATCHING	Severity L L	Quantity 4960 SF 4.7 SF	Area: 4,960 SF

Extrapolated Distress Quantities*

Distress Description	Severity	Quantity	Density	Deduct
BLEEDING	N/A	3 SF	0.00%	0.00
LONGITUDINAL/TRANSVERSE CRACKING	LOW	159 LF	0.20%	3.12
PATCHING	LOW	51 SF	0.06%	2.00
RAVELING	HIGH	10 SF	0.01%	6.00
WEATHERING	LOW	78,951 SF	100.00%	5.96

* Multiple deduct values are scaled down from their algebraic sum to keep the model consistent with experimental data.

Percent of Deduct Values Based on Distress Mechanism

0.0 % Load 100.0 % Climate/Durability 0.0 % Other

WHITE SULPHUR SPRINGS AIRPORT

Branch: 23R RUNWAY

R-11

Length: 4,900 LF Width: 75 LF Area: 367,500 SF Last Const: 2010 Family: ACRMU
 From: T-11 To: R-12 Surface: AC

Inspections

Samples Surveyed: 7 Total Samples: 76 Last Inspection Date: 10/16/2018 **PCI: 80**

Sample # 6 Area: 4,875 SF

Distress Description	Severity	Quantity
WEATHERING	L	4,875 SF
LONGITUDINAL/TRANSVERSE CRACKING	M	9 LF
RAVELING	H	2 SF
LONGITUDINAL/TRANSVERSE CRACKING	L	261 LF
PATCHING	L	4 SF

Sample # 17 Area: 4,875 SF

Distress Description	Severity	Quantity
LONGITUDINAL/TRANSVERSE CRACKING	L	135 LF
WEATHERING	L	4,875 SF

Sample # 28 Area: 4,875 SF

Distress Description	Severity	Quantity
LONGITUDINAL/TRANSVERSE CRACKING	L	155 LF
WEATHERING	L	4,875 SF

Sample # 39 Area: 4,875 SF

Distress Description	Severity	Quantity
WEATHERING	L	4,875 SF
LONGITUDINAL/TRANSVERSE CRACKING	L	179 LF
SWELL	L	30 SF
LONGITUDINAL/TRANSVERSE CRACKING	M	2 LF

Sample # 50 Area: 4,875 SF

Distress Description	Severity	Quantity
LONGITUDINAL/TRANSVERSE CRACKING	L	214 LF
WEATHERING	L	4,875 SF
LONGITUDINAL/TRANSVERSE CRACKING	M	7 LF

Sample # 61 Area: 4,875 SF

Distress Description	Severity	Quantity
LONGITUDINAL/TRANSVERSE CRACKING	L	182 LF
WEATHERING	L	4,875 SF

Sample # 72 Area: 4,875 SF

Distress Description	Severity	Quantity
WEATHERING	L	4,875 SF
LONGITUDINAL/TRANSVERSE CRACKING	L	188 LF

Extrapolated Distress Quantities*

Distress Description	Severity	Quantity	Density	Deduct
LONGITUDINAL/TRANSVERSE CRACKING	LOW	14,151 LF	3.85%	12.16
LONGITUDINAL/TRANSVERSE CRACKING	MEDIUM	194 LF	0.05%	4.00
PATCHING	LOW	43 SF	0.01%	2.00
RAVELING	HIGH	22 SF	0.01%	6.00
SWELL	LOW	323 SF	0.09%	1.00
WEATHERING	LOW	367,500 SF	100.00%	5.96

* Multiple deduct values are scaled down from their algebraic sum to keep the model consistent with experimental data.

Percent of Deduct Values Based on Distress Mechanism

0.0 % Load 97.0 % Climate/Durability 3.0 % Other

WHITE SULPHUR SPRINGS AIRPORT

Branch: 23R RUNWAY

R-12

Length: 1,400 LF Width: 75 LF Area: 105,000 SF Last Const: 2009 Family: ACRMU
 From: R-11 To: T-12 Surface: AC

Inspections

Samples Surveyed: 6 **Total Samples:** 20 **Last Inspection Date:** 10/16/2018 **PCI:** 79

Sample # 3	Distress Description LONGITUDINAL/TRANSVERSE CRACKING WEATHERING	Severity L L	Quantity 265 LF 4,875 SF	Area: 4,875 SF
Sample # 7	Distress Description DEPRESSION PATCHING WEATHERING LONGITUDINAL/TRANSVERSE CRACKING	Severity L L L L	Quantity 1 SF 8 SF 4,875 SF 208 LF	Area: 4,875 SF
Sample # 9	Distress Description PATCHING WEATHERING LONGITUDINAL/TRANSVERSE CRACKING	Severity L L L	Quantity 0 SF 4,875 SF 253 LF	Area: 4,875 SF
Sample # 11	Distress Description LONGITUDINAL/TRANSVERSE CRACKING WEATHERING	Severity L L	Quantity 200 LF 4,875 SF	Area: 4,875 SF
Sample # 15	Distress Description DEPRESSION WEATHERING PATCHING LONGITUDINAL/TRANSVERSE CRACKING	Severity H L L L	Quantity 1 SF 4,875 SF 4 SF 306 LF	Area: 4,875 SF
Sample # 19	Distress Description LONGITUDINAL/TRANSVERSE CRACKING WEATHERING	Severity L L	Quantity 155 LF 4,875 SF	Area: 4,875 SF

Extrapolated Distress Quantities*

Distress Description	Severity	Quantity	Density	Deduct
DEPRESSION	HIGH	4 SF	0.00%	12.00
DEPRESSION	LOW	4 SF	0.00%	0.30
LONGITUDINAL/TRANSVERSE CRACKING	LOW	4,979 LF	4.74%	14.21
PATCHING	LOW	45 SF	0.04%	2.00
WEATHERING	LOW	105,000 SF	100.00%	5.96

* Multiple deduct values are scaled down from their algebraic sum to keep the model consistent with experimental data.

Percent of Deduct Values Based on Distress Mechanism

0.0 % Load 64.0 % Climate/Durability 36.0 % Other

WHITE SULPHUR SPRINGS AIRPORT

Branch: 23T TAXIWAY

T-1

Length: 590 LF **Width:** 39 LF **Area:** 23,364 SF **Last Const:** 1992 **Family:** ACRMU
From: TAXIWAYS AT NORTH END **To:** **Surface:** ST

Inspections

Samples Surveyed: 3 **Total Samples:** 4 **Last Inspection Date:** 10/16/2018 **PCI:** **58**

Sample # 2 **Area:** 5,000 SF

Distress Description	Severity	Quantity
BLEEDING	NA	28 SF
LONGITUDINAL/TRANSVERSE CRACKING	M	1 LF
WEATHERING	M	5,000 SF
LONGITUDINAL/TRANSVERSE CRACKING	L	241 LF
RAVELING	L	5,000 SF

Sample # 3 **Area:** 5,000 SF

Distress Description	Severity	Quantity
RAVELING	L	5,000 SF
BLEEDING	NA	2 SF
WEATHERING	M	5,000 SF
LONGITUDINAL/TRANSVERSE CRACKING	L	80 LF

Sample # 4 **Area:** 5,000 SF

Distress Description	Severity	Quantity
BLEEDING	NA	28 SF
LONGITUDINAL/TRANSVERSE CRACKING	M	1 LF
WEATHERING	M	5,000 SF
LONGITUDINAL/TRANSVERSE CRACKING	L	241 LF
RAVELING	L	5,000 SF

Extrapolated Distress Quantities*

Distress Description	Severity	Quantity	Density	Deduct
BLEEDING	N/A	47 SF	0.20%	1.13
DEPRESSION	LOW	16 SF	0.07%	0.30
LONGITUDINAL/TRANSVERSE CRACKING	LOW	598 LF	2.56%	8.90
LONGITUDINAL/TRANSVERSE CRACKING	MEDIUM	34 LF	0.15%	4.34
PATCHING	LOW	125 SF	0.53%	2.53
RAVELING	LOW	23,364 SF	100.00%	26.35
WEATHERING	MEDIUM	23,364 SF	100.00%	20.34

* Multiple deduct values are scaled down from their algebraic sum to keep the model consistent with experimental data.

Percent of Deduct Values Based on Distress Mechanism

0.0 % Load 98.0 % Climate/Durability 2.0 % Other

WHITE SULPHUR SPRINGS AIRPORT

Branch: 23T TAXIWAY

T-2

Length: 1,231 LF Width: 35 LF Area: 38,495 SF Last Const: 1992 Family: ACRMU
 From: SOUTH END OF R/W 1-19 To: TURNAROUND Surface: AC

Inspections

Samples Surveyed: 2 Total Samples: 2 Last Inspection Date: 10/16/2018 **PCI: 68**

Sample # 3 Area: 5,200 SF

Distress Description	Severity	Quantity
PATCHING	L	125 SF
LONGITUDINAL/TRANSVERSE CRACKING	M	6 LF
LONGITUDINAL/TRANSVERSE CRACKING	L	134 LF
WEATHERING	M	5,200 SF

Sample # 4 Area: 6,275 SF

Distress Description	Severity	Quantity
LONGITUDINAL/TRANSVERSE CRACKING	L	424 LF
PATCHING	L	125 SF
WEATHERING	M	6,275 SF

Extrapolated Distress Quantities*

Distress Description	Severity	Quantity	Density	Deduct
LONGITUDINAL/TRANSVERSE CRACKING	LOW	1,872 LF	4.86%	14.47
LONGITUDINAL/TRANSVERSE CRACKING	MEDIUM	20 LF	0.05%	4.00
PATCHING	LOW	839 SF	2.18%	5.88
WEATHERING	MEDIUM	38,495 SF	100.00%	20.34

* Multiple deduct values are scaled down from their algebraic sum to keep the model consistent with experimental data.

Percent of Deduct Values Based on Distress Mechanism

0.0 % Load 100.0 % Climate/Durability 0.0 % Other

WHITE SULPHUR SPRINGS AIRPORT

Branch: 23T TAXIWAY

T-11

Length: 384 LF Width: 40 LF Area: 18,400 SF Last Const: 2010 Family: ACRMU
 From: A-11 To: R-11 Surface: AC

Inspections

Samples Surveyed: 3 Total Samples: 4 Last Inspection Date: 10/16/2018 **PCI: 85**

Sample # 1 Area: 3,840 SF

Distress Description	Severity	Quantity
WEATHERING	L	3,840 SF
LONGITUDINAL/TRANSVERSE CRACKING	L	20 LF
PATCHING	L	0 SF

Sample # 3 Area: 3,840 SF

Distress Description	Severity	Quantity
LONGITUDINAL/TRANSVERSE CRACKING	L	53 LF
WEATHERING	L	3,840 SF
PATCHING	L	0 SF

Sample # 4 Area: 3,840 SF

Distress Description	Severity	Quantity
LONGITUDINAL/TRANSVERSE CRACKING	L	55 LF
WEATHERING	L	3,840 SF
RAVELING	H	18 SF

Extrapolated Distress Quantities*

Distress Description	Severity	Quantity	Density	Deduct
LONGITUDINAL/TRANSVERSE CRACKING	LOW	204 LF	1.11%	5.18
PATCHING	LOW	1 SF	0.00%	2.00
RAVELING	HIGH	29 SF	0.16%	7.49
WEATHERING	LOW	18,400 SF	100.00%	5.96

* Multiple deduct values are scaled down from their algebraic sum to keep the model consistent with experimental data.

Percent of Deduct Values Based on Distress Mechanism

0.0 % Load 100.0 % Climate/Durability 0.0 % Other

WHITE SULPHUR SPRINGS AIRPORT

Branch: 23T TAXIWAY

T-12

Length: 654 LF Width: 40 LF Area: 26,915 SF Last Const: 2010 Family: ACRMU
 From: R/W 1-19 TURNAROUND To: R-12 Surface: AC

Inspections

Samples Surveyed: 3 **Total Samples:** 4 **Last Inspection:** 10/16/2018 **PCI:** 91

Sample # 1 **Area:** 4,970 SF

Distress Description	Severity	Quantity
WEATHERING	L	4,970 SF
LONGITUDINAL/TRANSVERSE CRACKING	L	26 LF

Sample # 2 **Area:** 4,970 SF

Distress Description	Severity	Quantity
LONGITUDINAL/TRANSVERSE CRACKING	L	15 LF
WEATHERING	L	4,970 SF

Sample # 3 **Area:** 4,970 SF

Distress Description	Severity	Quantity
LONGITUDINAL/TRANSVERSE CRACKING	L	6 LF
WEATHERING	L	4,970 SF

Extrapolated Distress Quantities*

Distress Description	Severity	Quantity	Density	Deduct
LONGITUDINAL/TRANSVERSE CRACKING	LOW	85 LF	0.32%	3.66
WEATHERING	LOW	26,915 SF	100.00%	5.96

* Multiple deduct values are scaled down from their algebraic sum to keep the model consistent with experimental data.

Percent of Deduct Values Based on Distress Mechanism

0.0 % Load 100.0 % Climate/Durability 0.0 % Other

WHITE SULPHUR SPRINGS AIRPORT (23)

FIFTEEN YEAR PROJECTIONS ESTIMATED AVERAGE ANNUAL COST: **\$60,224**

Plan Year: 2019		Estimated Cost:					\$224,652	PCI	
Section	Maintenance	Local	Global	Major<Crit	Major>Crit	Total	Before	After	
A-11	Preventive + Global MR	\$21	\$26,843	\$0	\$0	\$26,864	90	93	
R-11	Preventive + Global MR	\$4,483	\$124,949	\$0	\$0	\$129,432	79	87	
R-12	Preventive + Global MR	\$1,696	\$35,700	\$0	\$0	\$37,396	78	86	
T-11	Preventive + Global MR	\$99	\$6,256	\$0	\$0	\$6,355	85	90	
T-12	Global MR	\$0	\$9,151	\$0	\$0	\$9,151	91	94	
T-2	Preventive + Global MR	\$2,365	\$13,088	\$0	\$0	\$15,454	68	71	

Plan Year: 2020		Estimated Cost:					\$4,701	PCI	
Section	Maintenance	Local	Global	Major<Crit	Major>Crit	Total	Before	After	
A-11	None	\$0	\$0	\$0	\$0	\$0	92	92	
R-11	Preventive	\$2,076	\$0	\$0	\$0	\$2,076	84	85	
R-12	Preventive	\$702	\$0	\$0	\$0	\$702	83	83	
T-11	Preventive	\$32	\$0	\$0	\$0	\$32	88	88	
T-12	None	\$0	\$0	\$0	\$0	\$0	93	93	
T-2	Preventive	\$1,891	\$0	\$0	\$0	\$1,891	70	70	

Plan Year: 2021		Estimated Cost:					\$5,979	PCI	
Section	Maintenance	Local	Global	Major<Crit	Major>Crit	Total	Before	After	
A-11	None	\$0	\$0	\$0	\$0	\$0	91	91	
R-11	Preventive	\$2,878	\$0	\$0	\$0	\$2,878	82	82	
R-12	Preventive	\$929	\$0	\$0	\$0	\$929	81	81	
T-11	Preventive	\$63	\$0	\$0	\$0	\$63	87	87	
T-12	None	\$0	\$0	\$0	\$0	\$0	92	92	
T-2	Preventive	\$2,109	\$0	\$0	\$0	\$2,109	69	69	

Plan Year: 2022		Estimated Cost:					\$7,610	PCI	
Section	Maintenance	Local	Global	Major<Crit	Major>Crit	Total	Before	After	
A-11	Preventive	\$18	\$0	\$0	\$0	\$18	90	90	
R-11	Preventive	\$3,687	\$0	\$0	\$0	\$3,687	80	80	
R-12	Preventive	\$1,474	\$0	\$0	\$0	\$1,474	79	79	
T-11	Preventive	\$94	\$0	\$0	\$0	\$94	85	85	
T-12	None	\$0	\$0	\$0	\$0	\$0	91	91	
T-2	Preventive	\$2,336	\$0	\$0	\$0	\$2,336	68	68	

Plan Year: 2023		Estimated Cost:					\$12,067	PCI	
Section	Maintenance	Local	Global	Major<Crit	Major>Crit	Total	Before	After	
A-11	Preventive	\$108	\$0	\$0	\$0	\$108	89	89	
R-11	Preventive	\$6,880	\$0	\$0	\$0	\$6,880	78	78	
R-12	Preventive	\$2,381	\$0	\$0	\$0	\$2,381	77	77	
T-11	Preventive	\$124	\$0	\$0	\$0	\$124	83	83	
T-12	Preventive	\$11	\$0	\$0	\$0	\$11	90	90	
T-2	Preventive	\$2,564	\$0	\$0	\$0	\$2,564	67	67	

Plan Year: 2024		Estimated Cost:					\$232,537	PCI	
Section	Maintenance	Local	Global	Major<Crit	Major>Crit	Total	Before	After	
A-11	Preventive + Global MR	\$197	\$26,843	\$0	\$0	\$27,040	88	91	
R-11	Preventive + Global MR	\$10,082	\$124,949	\$0	\$0	\$135,031	76	83	
R-12	Preventive + Global MR	\$3,284	\$35,700	\$0	\$0	\$38,984	75	82	
T-11	Preventive + Global MR	\$155	\$6,256	\$0	\$0	\$6,411	82	87	
T-12	Preventive + Global MR	\$40	\$9,151	\$0	\$0	\$9,191	89	92	
T-2	Preventive + Global MR	\$2,791	\$13,088	\$0	\$0	\$15,879	66	69	

Plan Year: 2025		Estimated Cost:					\$7,136	PCI	
Section	Maintenance	Local	Global	Major<Crit	Major>Crit	Total	Before	After	
A-11	Preventive	\$8	\$0	\$0	\$0	\$8	90	90	
R-11	Preventive	\$3,479	\$0	\$0	\$0	\$3,479	81	81	
R-12	Preventive	\$1,252	\$0	\$0	\$0	\$1,252	80	80	
T-11	Preventive	\$88	\$0	\$0	\$0	\$88	85	85	
T-12	None	\$0	\$0	\$0	\$0	\$0	91	91	
T-2	Preventive	\$2,310	\$0	\$0	\$0	\$2,310	68	68	

Plan Year: 2026		Estimated Cost:					\$11,006	PCI	
Section	Maintenance	Local	Global	Major<Crit	Major>Crit	Total	Before	After	
A-11	Preventive	\$98	\$0	\$0	\$0	\$98	89	89	
R-11	Preventive	\$6,084	\$0	\$0	\$0	\$6,084	78	79	
R-12	Preventive	\$2,159	\$0	\$0	\$0	\$2,159	77	78	
T-11	Preventive	\$119	\$0	\$0	\$0	\$119	84	84	
T-12	Preventive	\$8	\$0	\$0	\$0	\$8	90	90	
T-2	Preventive	\$2,539	\$0	\$0	\$0	\$2,539	67	67	

WHITE SULPHUR SPRINGS AIRPORT (23)

FIFTEEN YEAR PROJECTIONS ESTIMATED AVERAGE ANNUAL COST: **\$60,224**

Plan Year: 2027							Estimated Cost:	\$15,495		PCI	
Section	Maintenance	Local	Global	Major<Crit	Major>Crit	Total	Before	After			
A-11	Preventive	\$186	\$0	\$0	\$0	\$186	88	88			
R-11	Preventive	\$9,290	\$0	\$0	\$0	\$9,290	76	76			
R-12	Preventive	\$3,066	\$0	\$0	\$0	\$3,066	75	75			
T-11	Preventive	\$150	\$0	\$0	\$0	\$150	82	82			
T-12	Preventive	\$38	\$0	\$0	\$0	\$38	89	89			
T-2	Preventive	\$2,766	\$0	\$0	\$0	\$2,766	66	66			

Plan Year: 2028							Estimated Cost:	\$19,980		PCI	
Section	Maintenance	Local	Global	Major<Crit	Major>Crit	Total	Before	After			
A-11	Preventive	\$275	\$0	\$0	\$0	\$275	87	87			
R-11	Preventive	\$12,496	\$0	\$0	\$0	\$12,496	74	74			
R-12	Preventive	\$3,969	\$0	\$0	\$0	\$3,969	73	73			
T-11	Preventive	\$180	\$0	\$0	\$0	\$180	80	80			
T-12	Preventive	\$67	\$0	\$0	\$0	\$67	88	88			
T-2	Preventive	\$2,993	\$0	\$0	\$0	\$2,993	64	64			

Plan Year: 2029							Estimated Cost:	\$240,539		PCI	
Section	Maintenance	Local	Global	Major<Crit	Major>Crit	Total	Before	After			
A-11	Preventive + Global MR	\$365	\$26,843	\$0	\$0	\$27,208	85	89			
R-11	Preventive + Global MR	\$15,698	\$124,949	\$0	\$0	\$140,647	72	79			
R-12	Preventive + Global MR	\$4,880	\$35,700	\$0	\$0	\$40,580	71	78			
T-11	Preventive + Global MR	\$291	\$6,256	\$0	\$0	\$6,547	79	84			
T-12	Preventive + Global MR	\$96	\$9,151	\$0	\$0	\$9,247	86	90			
T-2	Preventive + Global MR	\$3,220	\$13,088	\$0	\$0	\$16,308	63	67			

Plan Year: 2030							Estimated Cost:	\$14,426		PCI	
Section	Maintenance	Local	Global	Major<Crit	Major>Crit	Total	Before	After			
A-11	Preventive	\$175	\$0	\$0	\$0	\$175	88	88			
R-11	Preventive	\$8,494	\$0	\$0	\$0	\$8,494	77	77			
R-12	Preventive	\$2,839	\$0	\$0	\$0	\$2,839	76	76			
T-11	Preventive	\$144	\$0	\$0	\$0	\$144	82	82			
T-12	Preventive	\$35	\$0	\$0	\$0	\$35	89	89			
T-2	Preventive	\$2,739	\$0	\$0	\$0	\$2,739	66	66			

Plan Year: 2031							Estimated Cost:	\$18,899		PCI	
Section	Maintenance	Local	Global	Major<Crit	Major>Crit	Total	Before	After			
A-11	Preventive	\$266	\$0	\$0	\$0	\$266	87	87			
R-11	Preventive	\$11,687	\$0	\$0	\$0	\$11,687	75	75			
R-12	Preventive	\$3,742	\$0	\$0	\$0	\$3,742	74	74			
T-11	Preventive	\$175	\$0	\$0	\$0	\$175	81	81			
T-12	Preventive	\$64	\$0	\$0	\$0	\$64	88	88			
T-2	Preventive	\$2,966	\$0	\$0	\$0	\$2,966	65	65			

Plan Year: 2032							Estimated Cost:	\$23,451		PCI	
Section	Maintenance	Local	Global	Major<Crit	Major>Crit	Total	Before	After			
A-11	Preventive	\$354	\$0	\$0	\$0	\$354	86	86			
R-11	Preventive	\$14,893	\$0	\$0	\$0	\$14,893	72	73			
R-12	Preventive	\$4,649	\$0	\$0	\$0	\$4,649	71	72			
T-11	Preventive	\$269	\$0	\$0	\$0	\$269	79	79			
T-12	Preventive	\$93	\$0	\$0	\$0	\$93	87	87			
T-2	Preventive	\$3,193	\$0	\$0	\$0	\$3,193	63	63			

Plan Year: 2033							Estimated Cost:	\$28,112		PCI	
Section	Maintenance	Local	Global	Major<Crit	Major>Crit	Total	Before	After			
A-11	Preventive	\$444	\$0	\$0	\$0	\$444	84	84			
R-11	Preventive	\$18,095	\$0	\$0	\$0	\$18,095	70	70			
R-12	Preventive	\$5,638	\$0	\$0	\$0	\$5,638	69	69			
T-11	Preventive	\$392	\$0	\$0	\$0	\$392	77	77			
T-12	Preventive	\$122	\$0	\$0	\$0	\$122	85	85			
T-2	Preventive	\$3,420	\$0	\$0	\$0	\$3,420	62	62			