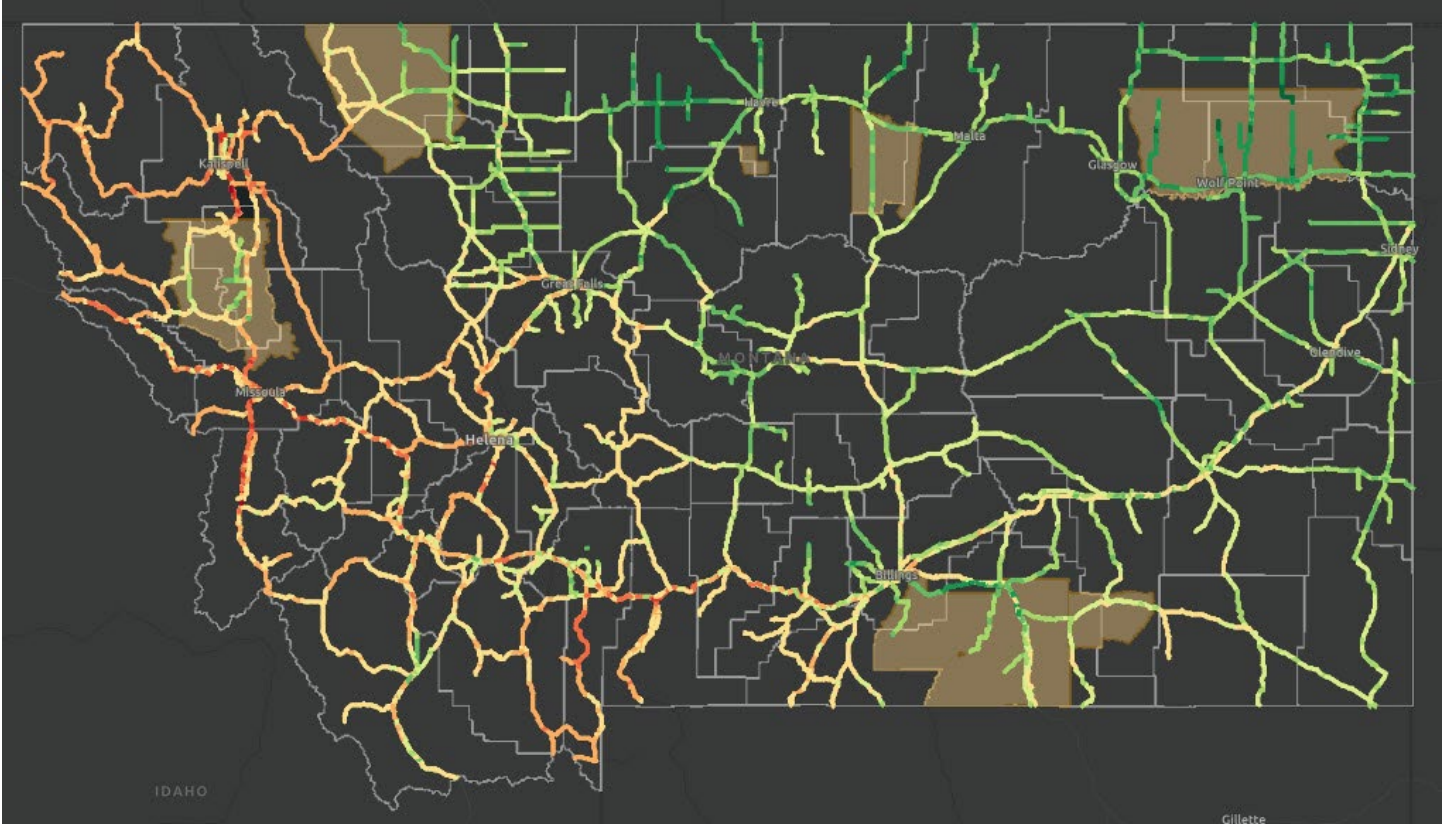


MONTANA WILDLIFE & TRANSPORTATION PARTNERSHIP PLANNING TOOL HELP GUIDE



PREPARED BY MONTANA DEPARTMENT OF TRANSPORTATION (MDT)

IN COOPERATION WITH

MONTANA WILDLIFE & TRANSPORTATION PARTNERSHIP (MWTP)

MONTANA FISH, WILDLIFE & PARKS (FWP)

MONTANANS FOR SAFE WILDLIFE PASSAGE (MSWP)



11/04/2022

TABLE OF CONTENTS

Overview	1
Frequently asked Questions	1
Final Analysis Map.....	2
Graphic Overview	2
1. Navigation Tools.....	2
2. Analysis Tools	3
Swipe Tool –	3
Selection Tool (Export Data) –	3
Filter Tool –	4
Add Data Tool –.....	4
3. Map Options	5
Legend –.....	5
Layer List –	5
Basemap –.....	6
Open live content in new tab –.....	6
4. Open Attribute Table	6
Individual Criteria Maps.....	7
MDT District Maps	7
Contacts, Questions, or Comments	7

NOTE: THE TABLE OF CONTENTS IS HYPERLINKED TO EACH SECTION OF THIS HELP GUIDE.

OVERVIEW

This help guide is intended to assist users to navigate, explore, and extract information from the Montana Wildlife & Transportation (MWT) Planning Tool. The help guide will provide technical assistance in each section of the MWT Planning tool.

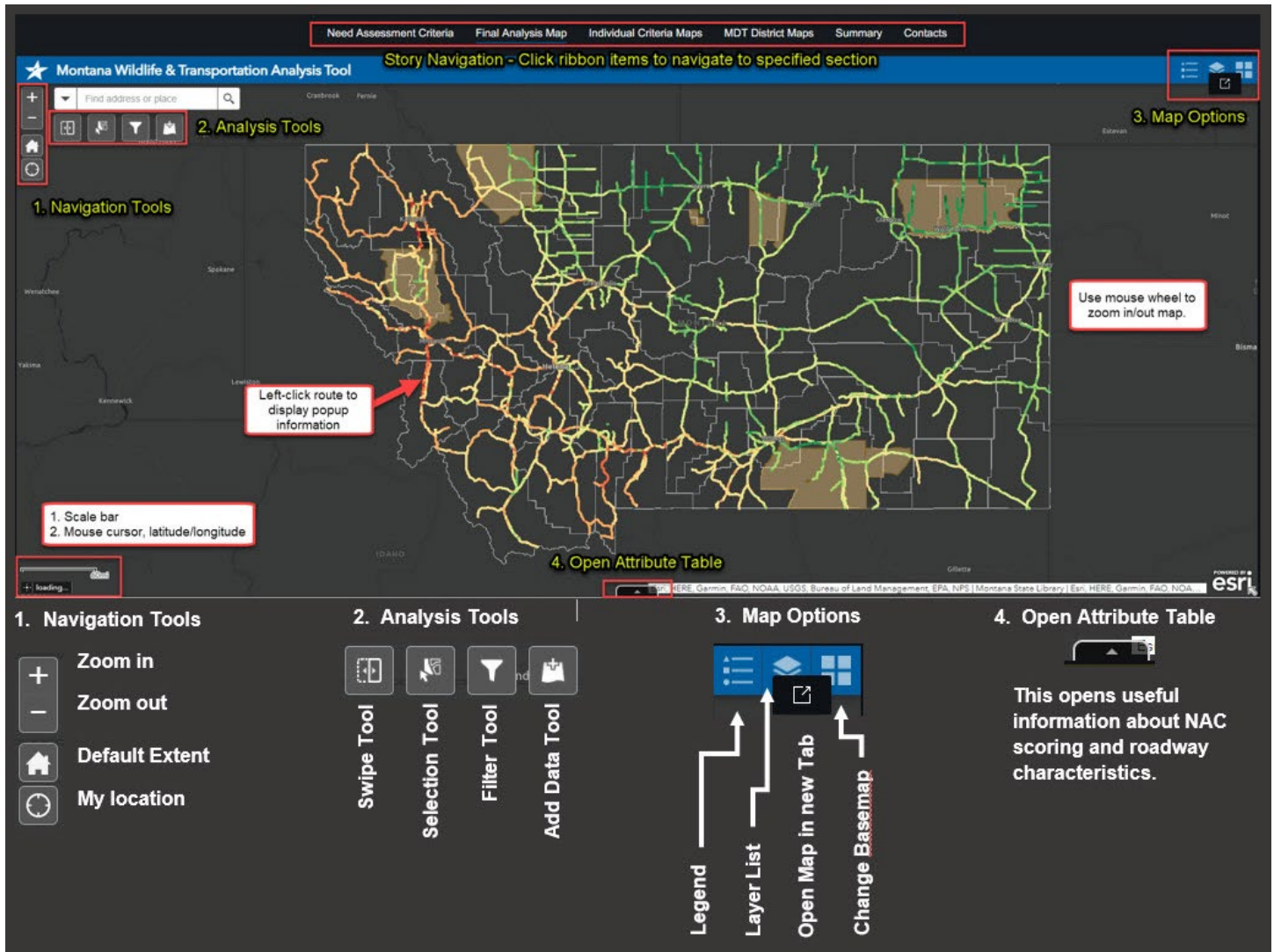
FREQUENTLY ASKED QUESTIONS

- The Montana Wildlife & Transportation Partnership Planning Tool is best viewed on a desktop computer or laptop. Usability is diminished when using mobile platforms.
- When using the Final Analysis Map for analysis purposes, [Open live content in new tab](#). This provides full functionality for all analysis tools.
- Hovering your cursor over a button displays helpful tips about the button or what the button does.
- Why are maps/layers not displaying properly and I receive an error message that a layer cannot be added to the map?
 - Clear your web browsers cached images and files. This is usually in the privacy and security settings menu.
- How do I export a spreadsheet of a particular area?
 - First, [Open live content in new tab](#), then use the selection tool to select the desired route segments. Finally, click selection actions, and export to CSV. Alternative method: [Open Attribute Table](#) and click Options. Export All to CSV.

FINAL ANALYSIS MAP

The Final Analysis Map is a comprehensive map containing all information pertaining to the Needs Assessment Criteria. The tool allows the user to Select, Export, Filter, and Add Data.

GRAPHIC OVERVIEW



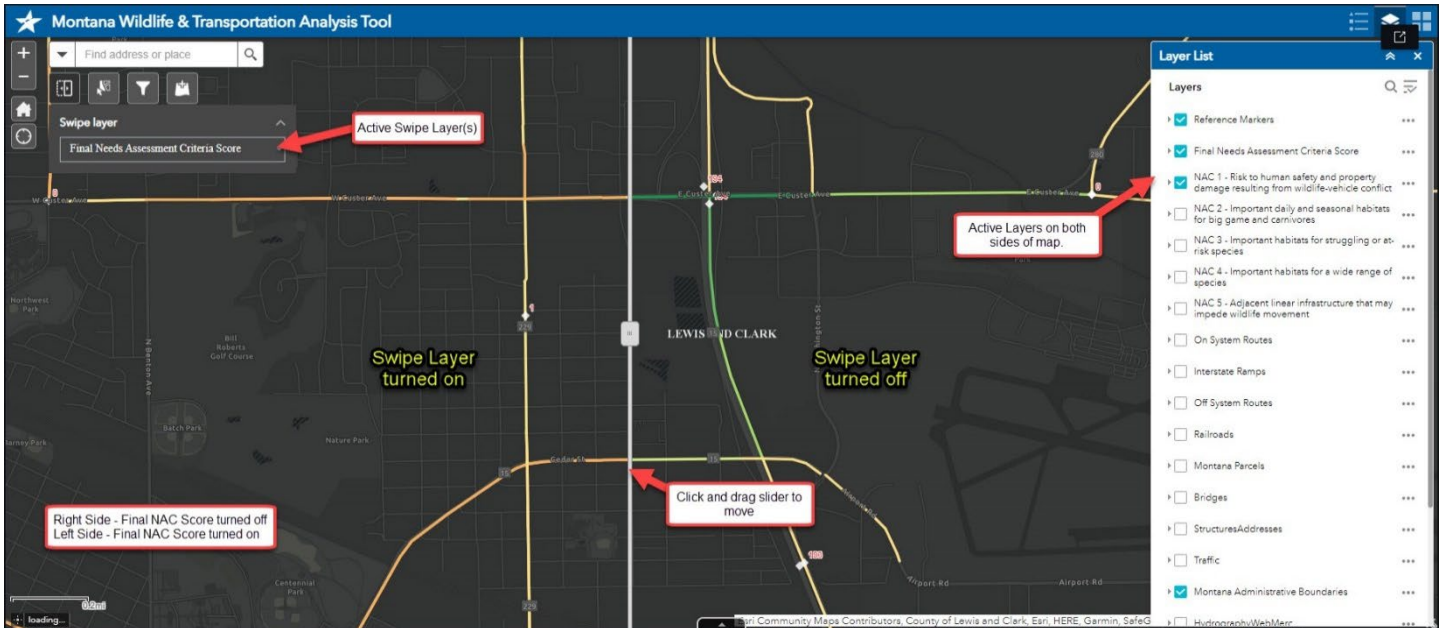
1. NAVIGATION TOOLS

- Zoom in map extent**
- Zoom out map extent**
- Default map extent (Montana)**
- My location – This displays the current location of the device.**

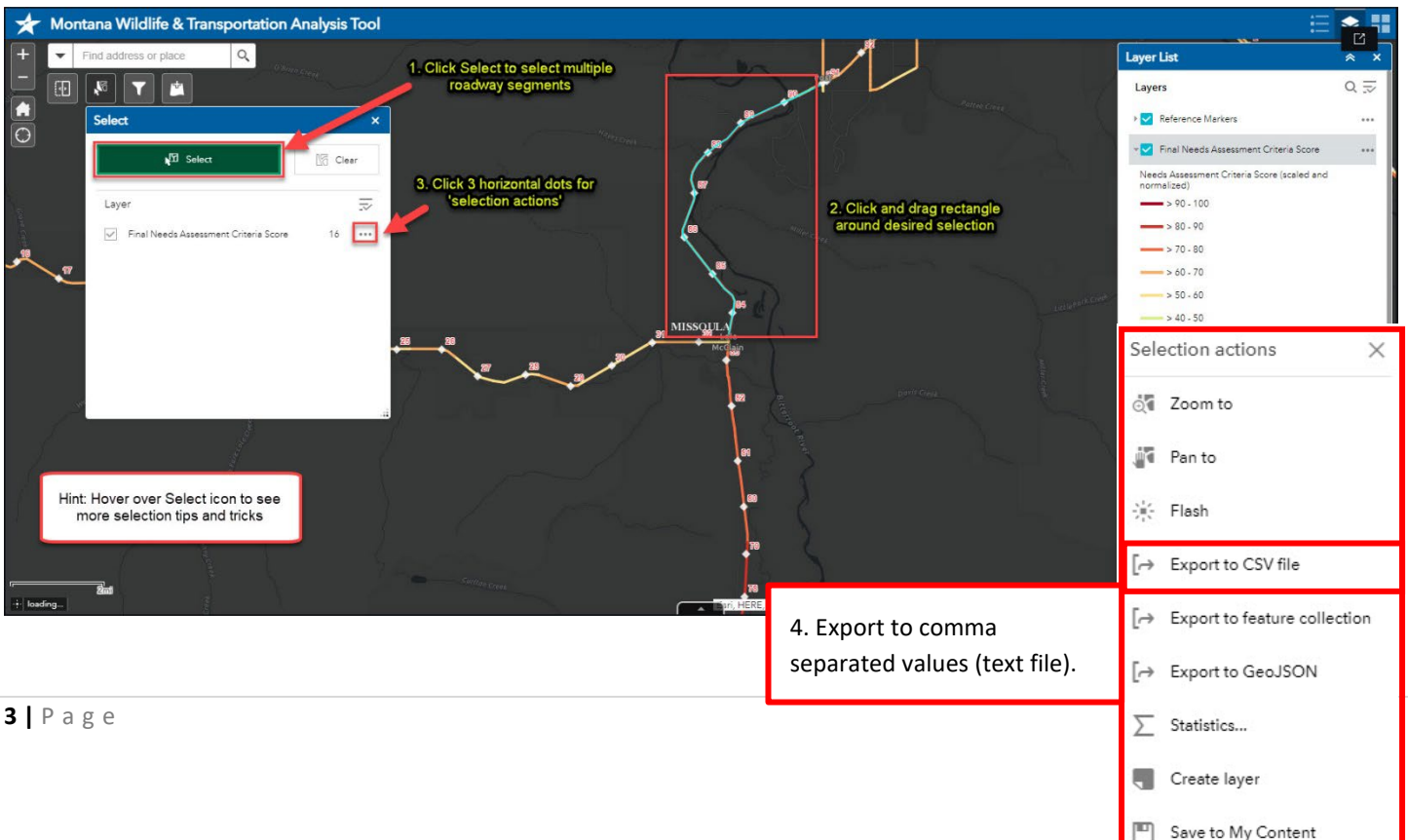
2. ANALYSIS TOOLS



SWIPE TOOL – This tool enables the user to compare different map layers. Select an active ‘swipe’ layer and drag the swipe tool to display the content of the active layer. The left side of the slider shows the active layer visible, and the right side shows the map with the active layer turned off. Example: If a user wanted to compare the Final Needs Assessment Criteria score to NAC1 scores, both layers will be turned on in the [layer list](#). Then the active swipe layer needs to be selected in the swipe layer dropdown. For this example, select Final Needs Assessment Criteria Score. Click and drag the slider across the screen to display the swipe layer turned on/off.

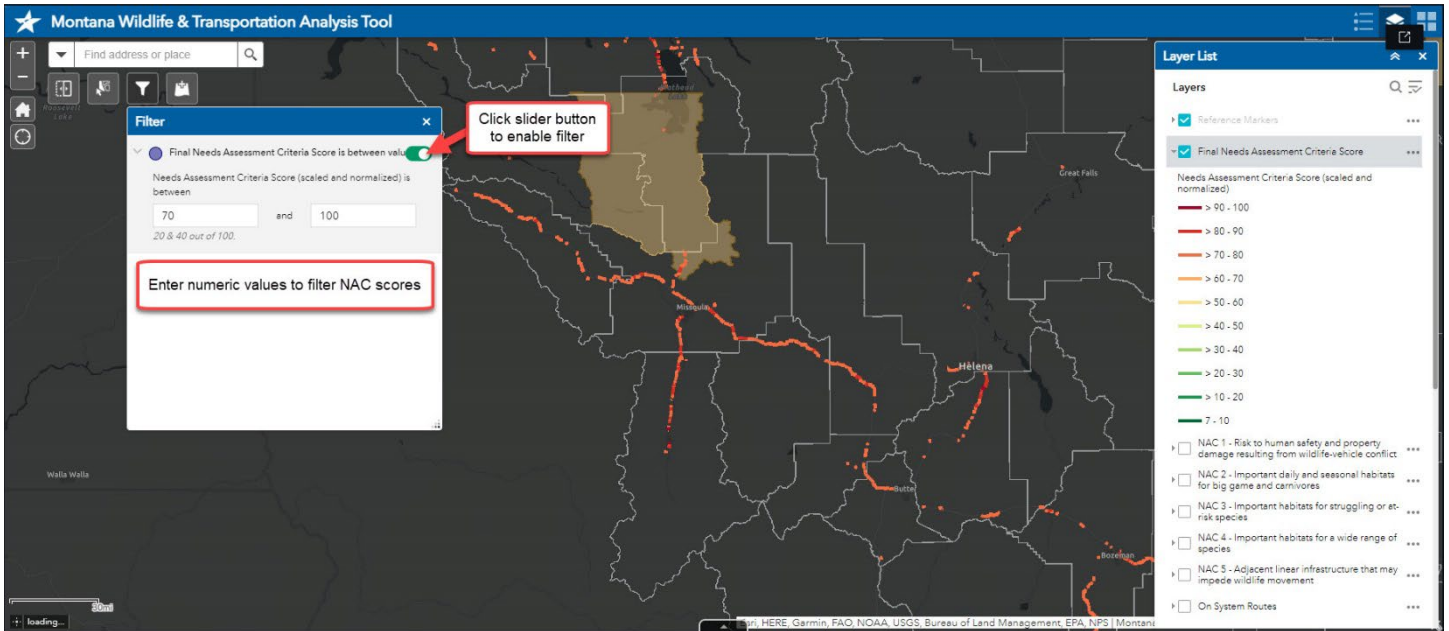


SELECTION TOOL (EXPORT DATA) – First, [Open live content in new tab](#). The Selection Tool allows users to select multiple route segments by clicking and dragging a rectangle around the desired selection. Click the horizontal three dots to open selection actions. Most commonly, **Export to CSV file** will be used to analyze the data further.

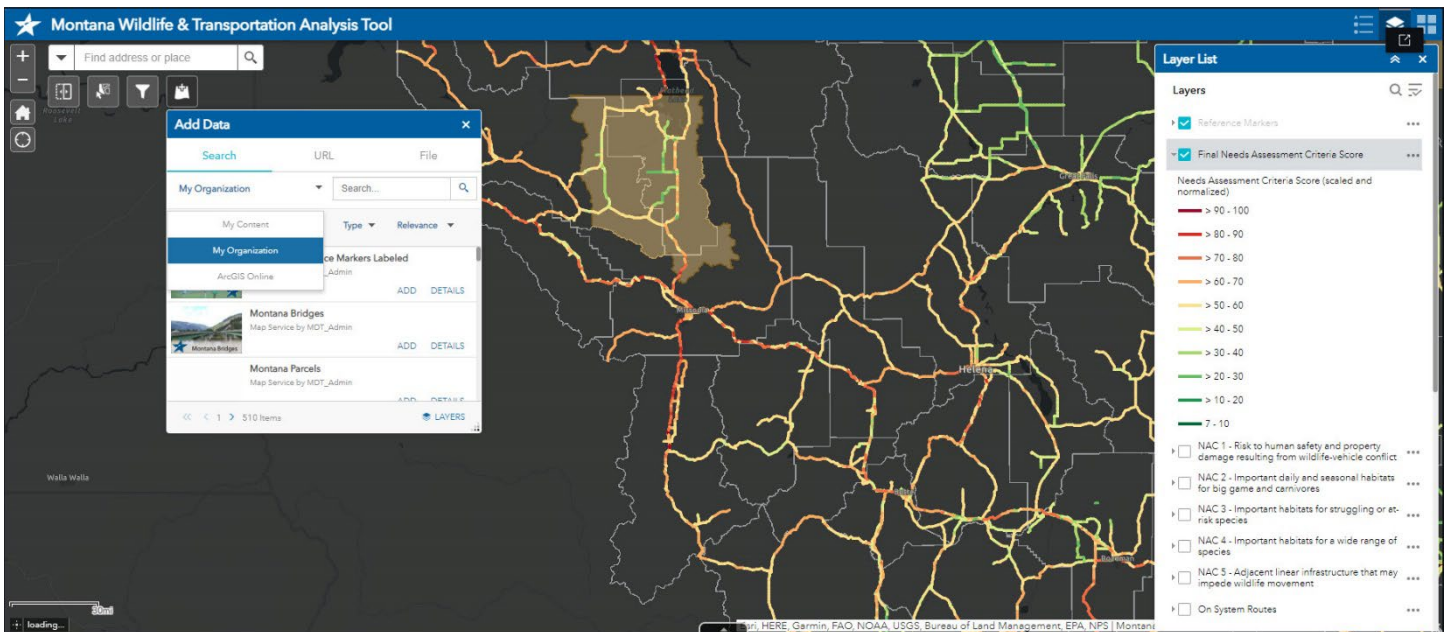




FILTER TOOL – Enter numeric values to dynamically filter Final Needs Assessment scores to further visualize data. Click the Filter Tool button and enter values. Click slider button to enable filter.



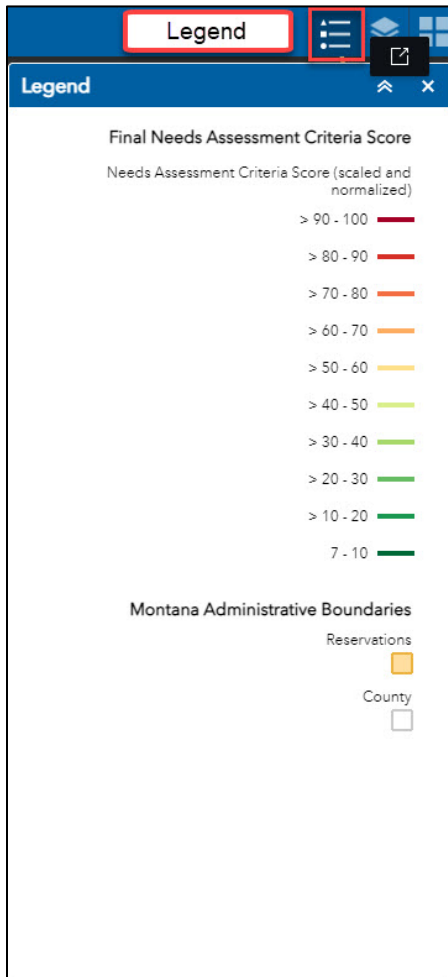
ADD DATA TOOL – Add data allows the user to temporarily add their own data to the webmap. Data can be added from ArcGIS Online, URL, or file. File types include: .shp, .csv, .kml, .gpx, and GeoJSON. For more information visit ESRI’s website: <https://doc.arcgis.com/en/web-appbuilder/latest/create-apps/widget-add-data.htm>



3. MAP OPTIONS

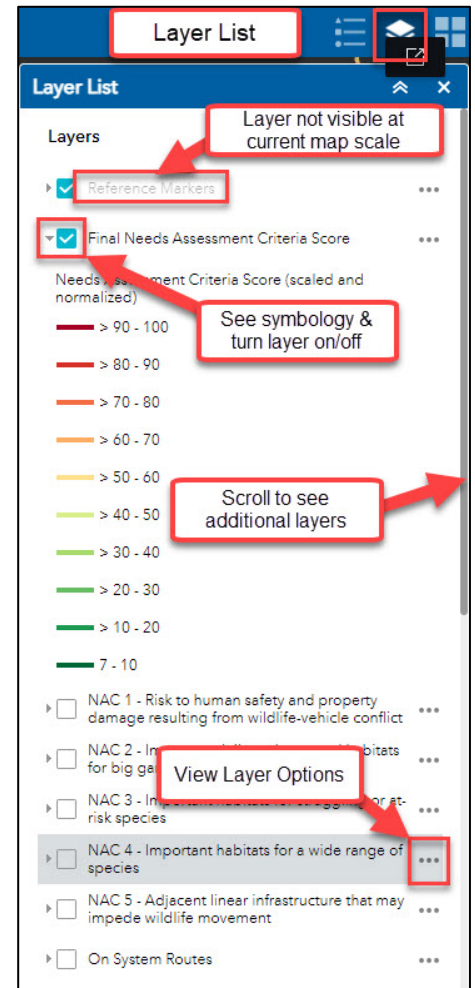


Map Options – include Legend, Layer List, Basemap, and Open live content in a new tab. Map options are in the upper right corner of the webmap.



LEGEND – The map legend displays the symbology for all layers which are turned on. This will dynamically update as layers are turned on/off in the layer list.

LAYER LIST – Displays all layers contained within the webmap. Opening the layer list allows the user to turn on and off layers and change layer options. Layers added from the [Add Data Tool](#) will be displayed in the Layer List.



VIEW LAYER OPTIONS –

Zoom to – Changes the map extent to show the entirety of the layer.

Transparency – Sets the layer’s transparency, using a sliding scale.

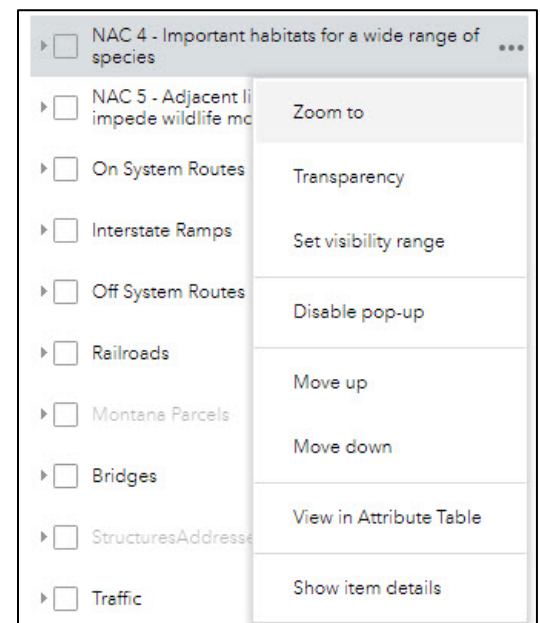
Set visibility range – sets the extent in which the layer will be visible.

Disable pop-up – Turns off/on clickable popups

Move up/ Move down – Move the layer up or down to change visibility hierarchy. A layer displays on top of all layers below it.

View in Attribute Table – Opens the attribute table at the bottom of screen to view information about the selected layer’s data.

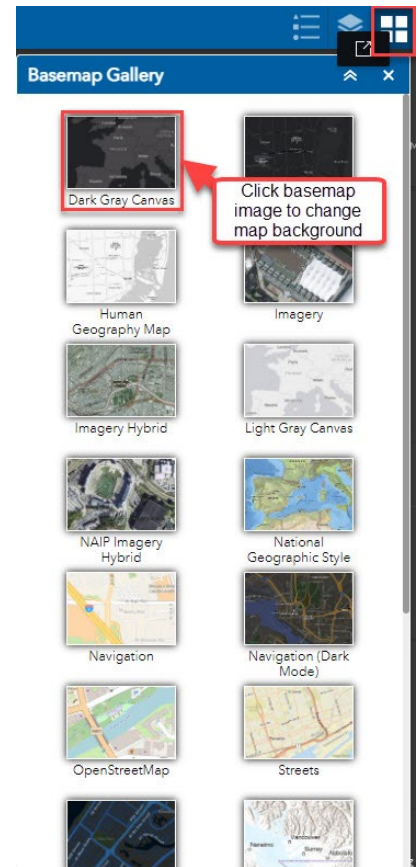
Show item details – Opens new tab displaying layer metadata.



BASEMAP – Opens basemap gallery. Allows user to change the basemap to ArcGIS Online’s basemaps such as imagery, Navigation, Topographic, and the USGS National Map.

OPEN LIVE CONTENT IN NEW TAB – Opens the Final Analysis map in a new browser tab.

NOTE: Opening the Final Analysis Map in a new browser tab will preserve all features and functionality of the original webmap, in addition to being necessary for Export to CSV.



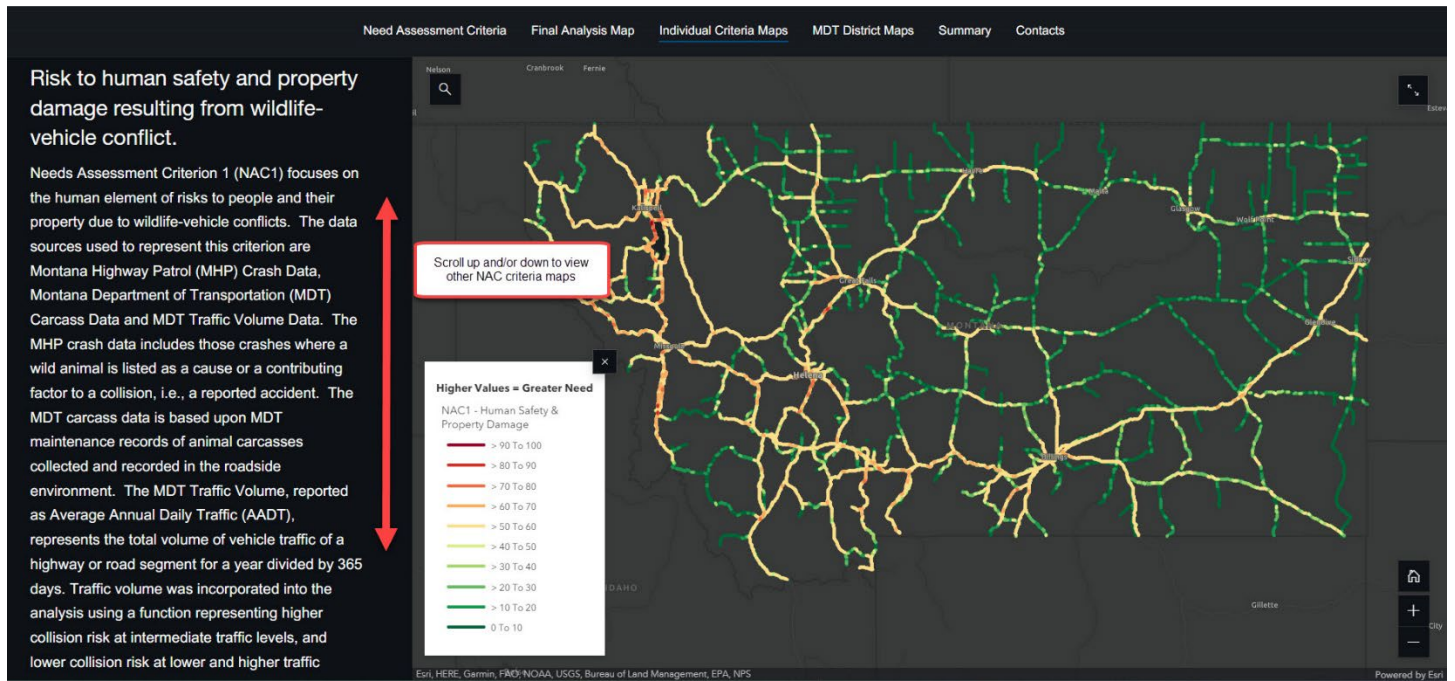
4. OPEN ATTRIBUTE TABLE

To open the [Attribute table](#), click the up arrow button near the bottom of the screen. The attribute table displays route segment data and NAC scores in a table which can be filtered and exported for further analysis. When a segment is selected on the map, it becomes highlighted in the table. The screenshot below gives an overview of how to open the attribute table and shows how to export information. **NOTE:** To Export Data, [open live content in new tab](#), exporting route information only downloads tabular data to a CSV file. This does not download a spatial dataset.

ROUTE ID	BEGIN MILE	END MILE	BEGIN REFERENCE POINT	END REFERENCE POINT	DEPARTMENTAL ROUTE	ROUTE NAME	SIGNED ROUTE	SYSTEM	FUNCTIONAL CLASS	ROUTE CATEGORY	STATE MAINTAINED	MAINTENANCE SECTION	STATE RESPONSIBLE
C000001A	34.918054	35.726000	34+0.85	35+0.734	N-1A	US-2	N-NHS	3-Principal Arterial - Other	Road	Yes	1219	Yes	
C000001A	35.726000	36.603000	35+0.734	36+0.616	N-1A	US-2	N-NHS	3-Principal Arterial - Other	Road	Yes	1219	Yes	
C000001A	36.603000	36.971000	36+0.616	36+0.884	N-1A	US-2	N-NHS	3-Principal Arterial - Other	Road	Yes	1219	Yes	
C000001A	36.971000	37.177000	36+0.884	37+0.172	N-1A	US-2	N-NHS	3-Principal Arterial - Other	Road	Yes	1219	Yes	

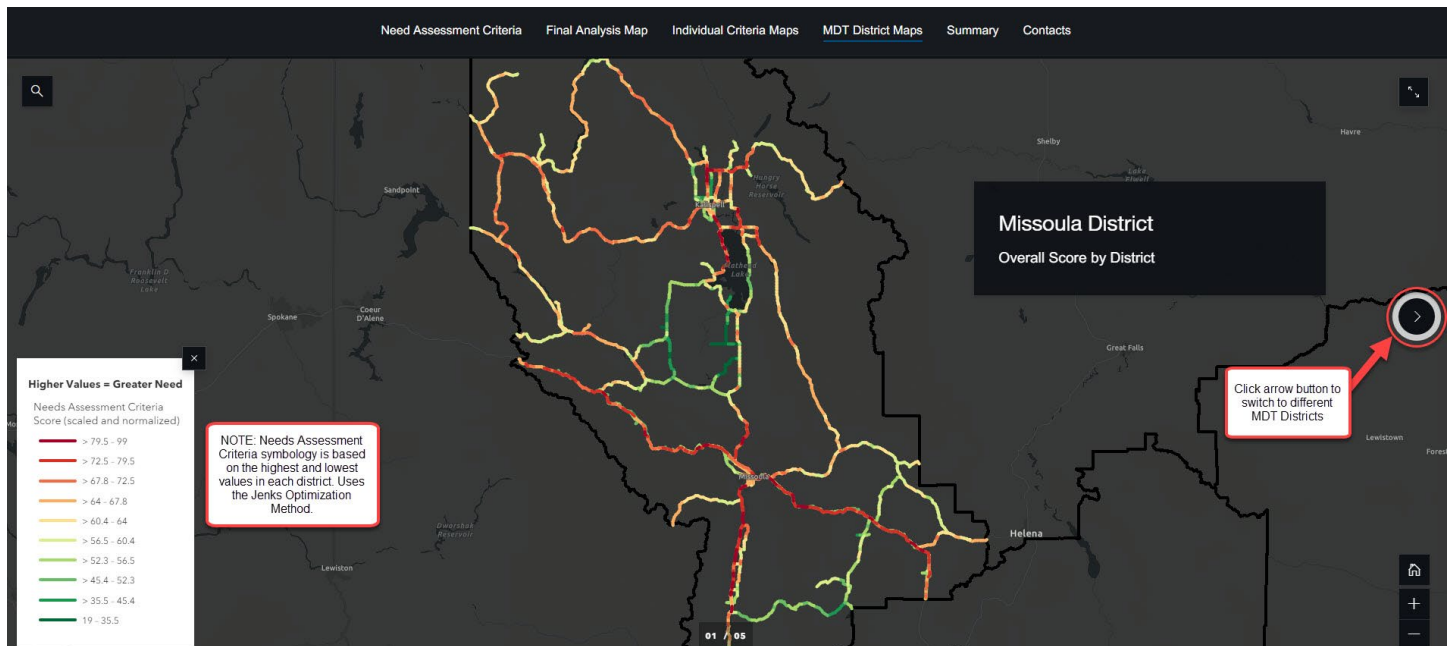
INDIVIDUAL CRITERIA MAPS

Individual Criteria maps use a scrolling feature and as the user scrolls up or down, the NAC map changes.



MDT DISTRICT MAPS

MDT District maps display Final Needs Assessment Criteria Scores based on each district. This means that the highest scores in each district are the maximum value in the symbology.



CONTACTS, QUESTIONS, OR COMMENTS

Mike Eidum – Geospatial Analyst – MDT – meidum@mt.gov, 406-444-9239

Brian Andersen – GeInfo Section Supervisor – MDT – brandersen@mt.gov, 406-444-6103