

## Montana Department of Transportation Bridge Bureau Approved Construction Equipment List

<b>Make:</b>	<i>Caterpillar</i>
<b>Model:</b>	<i>289D</i>
<b>Equipment Type:</b>	<i>Track Loader</i>
<b>Contractor Modifications:</b>	<i>None</i>

### Interstate Approval Conditions

<b>Approval Type</b>	<i>Crossing and operating</i>
<b>Speed:</b>	<i>No Restriction</i>
<b>Weight:</b>	<i>10,533 lb or less</i>
<b>Traffic:</b>	<i>Approved with Regular Traffic</i>
<b>Location Restrictions:</b>	<i>No Restriction</i>

### Non-Interstate Approval Conditions

<b>Approval Type</b>	<i>Crossing and operating</i>
<b>Speed:</b>	<i>No Restriction</i>
<b>Weight:</b>	<i>10,533 lb or less</i>
<b>Traffic:</b>	<i>Approved with Regular Traffic</i>
<b>Location Restrictions:</b>	<i>No Restriction</i>

**Comments:**

Equipment configuration, weights, and specifications on following pages. Approval does not apply to posted bridges. Other construction equipment is not allowed to operate on or cross bridge at the same time this equipment is on the bridge.



# Cat<sup>®</sup> 289D

## COMPACT TRACK LOADER

### FEATURES:

The Cat<sup>®</sup> 289D Compact Track Loader, with its vertical lift design, delivers extended reach and lift height for quick and easy truck loading. Its standard, suspended undercarriage system provides superior traction, flotation, stability and speed to work in a wide range of applications and underfoot conditions. The 289D features the following:

- **Industry leading sealed and pressurized cab option** provides a cleaner and quieter operating environment with excellent work tool visibility.
- **Available high-back, heated, air ride seat with seat mounted adjustable joystick controls** makes the D Series the industry leader in operator comfort.
- **High performance power train** provides maximum performance and production capability through the Electronic Torque Management system, standard two speed travel and an industry exclusive electronic hand/foot throttle with decel pedal capability.
- **High Flow XPS hydraulic system** is available for applications that demand maximum hydraulic work tool performance.
- **Electronically controlled Cat C3.3B engine** provides high horsepower and torque while meeting U.S. EPA Tier 4 Final (EU Stage IIIB) emission standards.
- **Cat "Intelligent Leveling" system (ILEV)** provides industry leading technology, integration and optional features such as dual direction self level, work tool return to dig and work tool positioner.
- **Standard fully independent torsion axle suspension** combined with the optional Speed Sensitive Ride Control system improves operation on rough terrain, enabling better load retention, increased productivity and greater operator comfort.
- **Maximize machine capability and control** with optional Advanced Display providing on-screen adjustments for implement response, hystat response and creep control. Also features multi-language functionality with customizable layouts, security system and rearview camera.
- **Ground level access** to all daily service and routine maintenance points helps reduce machine downtime for greater productivity.
- **Broad range of performance matched Cat Work Tools** make the Cat Compact Track Loader the most versatile machine on the job site.

## Specifications

### Engine

Engine Model	Cat C3.3B DIT (turbo)	
Gross Power SAE J1995	55.4 kW	74.3 hp
Net Power SAE 1349	54.4 kW	72.9 hp
Net Power ISO 9249	54.9 kW	73.7 hp
Peak Torque at 1,500 rpm SAE J1995	265 N-m	195 lbf-ft
Displacement	3.3 L	203 in <sup>3</sup>
Stroke	120 mm	4.7 in
Bore	94 mm	3.7 in

### Weights\*

Operating Weight	4778 kg	10,533 lb
------------------	---------	-----------

### Power Train

Travel Speed (Forward or Reverse):		
One Speed	7.2 km/h	4.5 mph
Two Speed	11.3 km/h	7.0 mph

\*Operating Weight, Operating Specifications and Dimensions all based on 75 kg (165 lb) operator, all fluids, two speed, OROPS, 1981 mm (78 in) dirt bucket, 400 mm (15.7 in) tracks, dual flange front idler/single flange rear idler, standard flow hydraulics, mechanical suspension seat, no optional counterweights and manual quick coupler (unless otherwise noted).

### Hydraulic System

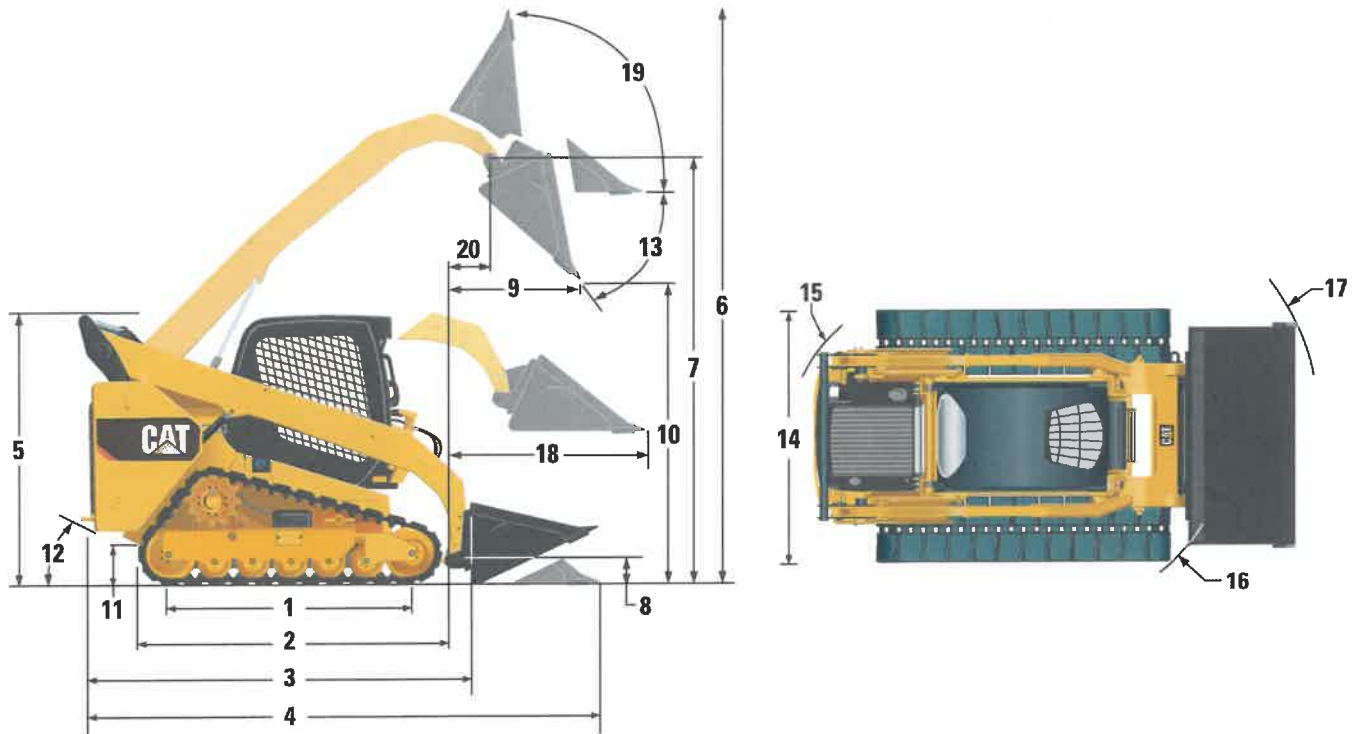
Hydraulic Flow – Standard:			
Loader Hydraulic Pressure	23 000 kPa	3,335 psi	
Loader Hydraulic Flow	86 L/min	23 gal/min	
Hydraulic Power (calculated)	33 kW	44 hp	
Hydraulic Flow – High Flow XPS:			
Maximum Loader Hydraulic Pressure	28 000 kPa	4,061 psi	
Maximum Loader Hydraulic Flow	121 L/min	32 gal/min	
Hydraulic Power (calculated)	57 kW	76 hp	

### Operating Specifications\*

Rated Operating Capacity:			
35% Tipping Load	1207 kg	2,660 lb	
50% Tipping Load	1724 kg	3,800 lb	
Rated Operating Capacity with Optional Counterweight			
Tipping Load	1837 kg	4,050 lb	
Breakout Force, Tilt Cylinder	3447 kg	7,600 lb	
Ground Contact Area (400 mm/15.7 in track)	3307 kg	7,291 lb	
Ground Contact Area (450 mm/17.7 in track)	1.30 m <sup>2</sup>	2,015 in <sup>2</sup>	
Ground Contact Area (450 mm/17.7 in track)	1.47 m <sup>2</sup>	2,272 in <sup>2</sup>	
Ground Pressure (400 mm/15.7 in track)	36.1 kPa	5.2 psi	
Ground Pressure (450 mm/17.7 in track)	32.0 kPa	4.6 psi	



# 289D Compact Track Loader



## Dimensions\*

1	Length of Track on Ground	1630 mm	64.2 in
2	Overall Length of Track	2129 mm	83.8 in
3	Length without Bucket	2995 mm	117.9 in
4	Length with Bucket on Ground	3714 mm	146.2 in
5	Height to Top of Cab	2113 mm	83.2 in
6	Maximum Overall Height	4015 mm	158.1 in
7	Bucket Pin Height at Maximum Lift	3178 mm	125.1 in
8	Bucket Pin Height at Carry Position	190 mm	7.5 in
9	Reach at Maximum Lift and Dump	761 mm	30.0 in
10	Clearance at Maximum Lift and Dump	2387 mm	94.0 in
11	Ground Clearance	226 mm	8.9 in
12	Departure Angle		33°
13	Maximum Dump Angle		51°
14	Vehicle Width (400 mm/15.7 in tracks)	1931 mm	76.0 in
	Vehicle Width (450 mm/17.7 in tracks)	1981 mm	78.0 in
15	Turning Radius from Center – Machine Rear	1796 mm	70.7 in
16	Turning Radius from Center – Coupler	1410 mm	55.5 in
17	Turning Radius from Center – Bucket	2256 mm	88.8 in
18	Maximum Reach with Arms Parallel to Ground	1270 mm	50.0 in
19	Rack Back Angle at Maximum Height		84°
20	Bucket Pin Reach at Maximum Lift	369 mm	14.5 in

## Cab

ROPS	ISO 3471:2008
FOPS	ISO 3449:2005 Level I
FOPS Level II	ISO 3449:2005 Level II

## Service Refill Capacities

Cooling System	14 L	3.7 gal
Engine Crankcase	11 L	3.0 gal
Fuel Tank	94 L	24.8 gal
Hydraulic System	52 L	13.7 gal
Hydraulic Tank	39 L	10.3 gal