

**Montana Department of Transportation
Bridge Bureau
Approved Construction Equipment List**

mdtacel@mt.gov

Make:	Comaco
Model:	Commander III
Equipment Type:	slipform paver
Contractor Modifications:	3 track configuration

Interstate Approval Conditions

<i>Approval Type</i>	crossing and operating
<i>Speed:</i>	no restriction
<i>Weight:</i>	29,500 lb or less
<i>Traffic:</i>	approved with regular traffic
<i>Location Restrictions:</i>	no restriction

Non-Interstate Approval Conditions

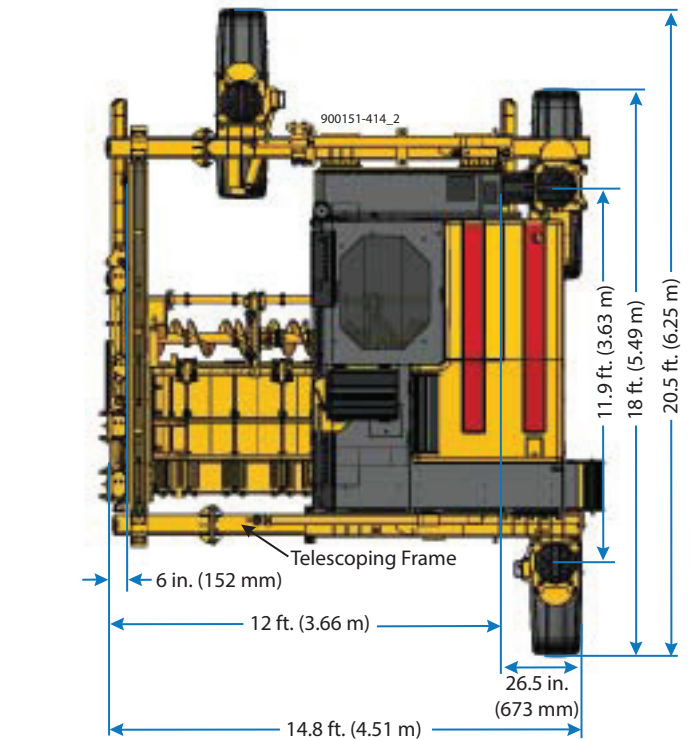
<i>Approval Type</i>	crossing and operating
<i>Speed:</i>	no restriction
<i>Weight:</i>	29,500 lb or less
<i>Traffic:</i>	approved with regular traffic
<i>Location Restrictions:</i>	no restriction

Comments:

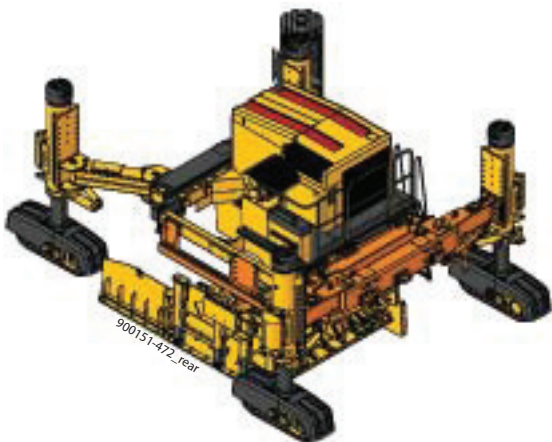
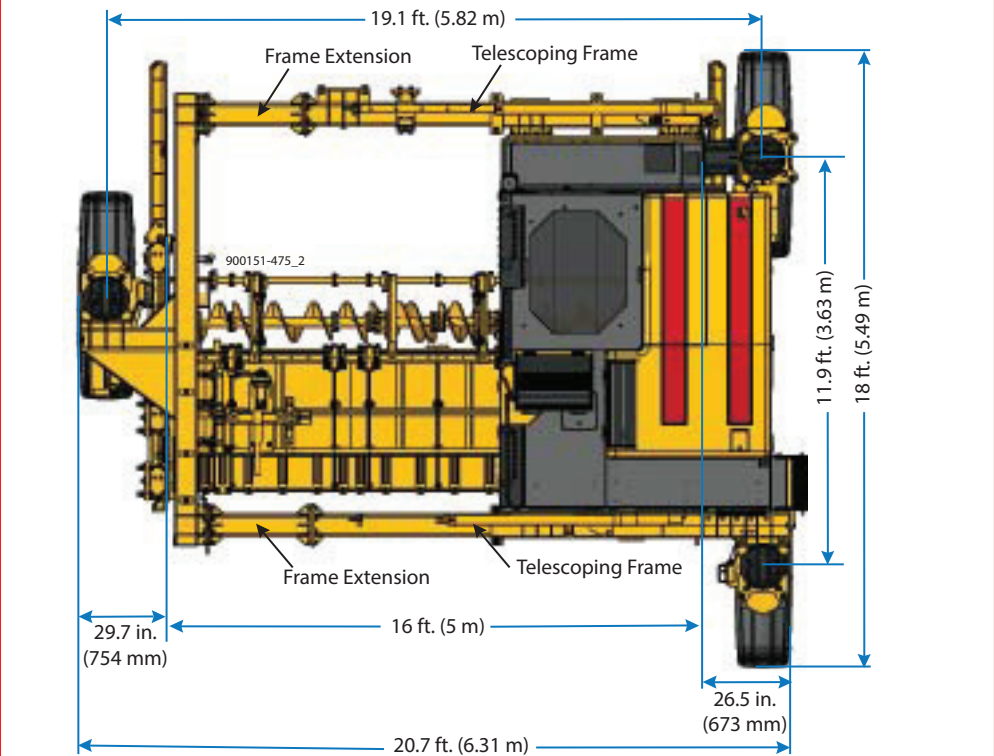
Equipment configuration, weights, and specifications on following pages. Approval does not apply to load posted bridges. Other construction equipment is not allowed to operate on or cross bridge at the same time this equipment is on the bridge. Approved with regular traffic means a concrete truck that meets legal load requirements may operate beside the slipform paver, but the concrete truck must remain in the painted lane or as far away from the edge of the bridge as possible. A lane closure is required. Additional concrete trucks must be spaced at least 30 feet apart while on the bridge.

Commander III Versatility

12 foot (3.66 m) Three-Track Paving Package



16 foot (5 m) Three-Track Paving Package

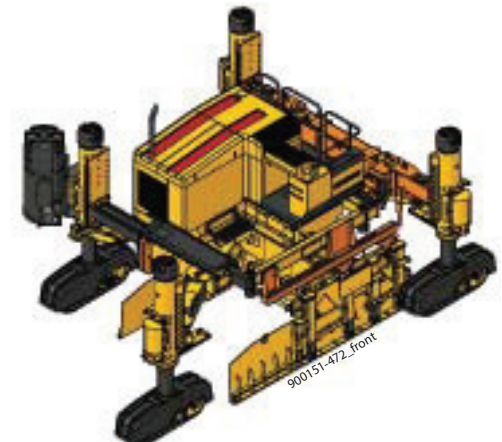


3 Track configuration proposed for use.

Additional Versatility

An economical four-track paving package for trails and small paving applications up to 11.5 feet (3.5 m) are easily achieved by adding the parts designated in orange on these drawings.

An economical four-track paving package for trails and small paving applications up to 11.5 feet (3.5 m) are easily achieved by adding the parts designated in orange on these drawings.



Commander III Specifications

ENGINE

Consult for options available.

SERVICE CAPACITIES

Fuel reservoir: 88 gal. (333 L).

Hydraulic oil reservoir: 162 gal. (613 L).

AUTOMATIC CONTROL SYSTEM

Type: Electronic-over-hydraulic.

Controls: GOMACO's exclusive G+® control system for paving accuracy and ease of operation. It features multi-language, metric or imperial settings, and a 6.5 in. (165 mm) anti-glare display screen.

Control indicators: Color graphical performance indicators allow operator to monitor control signals for machine guidance on stringline or 3D.

WATER SYSTEM

Type: High-pressure water system.

Capacity: 110 gal. (416 L) tank, hose, and nozzle.

SLIPFORM MOLD

Curb and gutter mold: One curb and gutter mold standard.

Optional molds available for curb and gutter, monolithic sidewalk and curb and gutter, barrier, parapet, irrigation canal, and more.

VIBRATORS

Type: Hydraulically powered, motor-in-head, variable speed, independently controlled.

Quantity Three-Track: Eight hydraulic circuits and four hydraulic vibrators with mounts included are standard.

Quantity Four-Track: Sixteen hydraulic circuits and four hydraulic vibrators with mounts included are standard.

MOLD DRAWBAR & HOLD-DOWN ASSEMBLY

Hydraulic lift: 18 in. (457 mm) pressure-compensated hydraulic vertical adjustment with 6 in. (152 mm) manual vertical adjustment, allowing up to 24 in. (610 mm) of vertical adjustment.

Sideshift distance: 36 in. (914 mm) hydraulic sideshift.

SUBGRADE TRIMMER (sectionalized)

Sectionalized trimmer: Internal hydraulic drive system and 24 in. (610 mm) diameter trimming wheel.

Trimmer wheel rotation: Upward cut.

Width: 42 in. (1067 mm) sectionalized trimmerhead includes one 24 in. (610 mm) drive section with hydraulic internal drive and 18 in. (457 mm) extension.

Sideshift and vertical adjustment: The trimmerhead mount for the three-track machine has 36 in. (914 mm) hydraulic sideshift, 18 in. (457 mm) of hydraulic vertical adjustment and 6 in. (152 mm) of manual vertical adjustment, allowing up to 24 in. (610 mm) of vertical adjustment.

CHARGING CONVEYOR

Type: Hydraulically powered, reversible with charging hopper.

Length: 17.1 ft. (5.21 m) between pulley centers.

Width: 24 in. (610 mm).

Belt speed: Variable to 362 fpm (110 mpm).

Conveyor mount: 36 in. (914 mm) hydraulic slide adjustment with 6 in. (152 mm) hydraulic tilt cylinder and manual pivoting mount (slide and tilt) for negotiating discharge from the ready-mix truck and negotiating grade variations. Allows truck positioning to front or side of machine. Hydraulically powered mount controls conveyor angle.

Belt wiper: Features special blades on adjustable spring steel rods for superior cleaning results. The unique, no-maintenance troughing rollers are greaseless and self-cleaning.

TELESCOPING FRAME (four-track)

Telescoping: Frame hydraulically telescopes on the left side up to 6 ft. (1.83 m).

TRACK SYSTEM

Type: Hydraulically powered gear-driven crawler tracks.

Track length: 5.1 ft. (1.55 m). Overall length with fenders 6 ft. (1.83 m).

Track pad width: 11.8 in. (300 mm).

Track speed: For the three-track machine, up to 49.5 fpm (15.2 mpm) paving, and auxiliary up to 131 fpm (39.9 mpm); for the four-track machine, up to 37.1 fpm (11.3 mpm) paving; and auxiliary, up to 98 fpm (29.9 mpm).

Track tension: Fully automatic, hydraulically locks in on machine start-up, maintaining a steady tension on the track chain.

Leg height adjustment: Each leg adjustable in 4 in. (102 mm) increments for 28 in. (711 mm) manual adjustment with 42 in. (1067 mm) hydraulic adjustment.

Telescoping leg for positioning right front track: Hydraulically controlled, allows 36 in. (914 mm) lateral track adjustment range.

Power-slide leg for positioning rear track: Hydraulically controlled, allows 6.5 ft. (1.98 m) lateral track movement.

Power-swing leg for positioning left front track on the

Commander III: Hydraulically controlled, allows track positioning from straight ahead to 13.5, 26, and 36.8 in. (343, 660, and 935 mm) to left outside of main frame or 13.5 and 26 in. (343 and 660 mm) to right toward center of main frame.

Power-swing leg for positioning left front track on the

Commander IIIx: Hydraulically controlled, electronically sensed allows track positioning from straight ahead to 33.4 in. (848 mm) to left outside of mainframe or 5.3 in. (135 mm) to right toward center of mainframe.

THREE-TRACK MACHINE DIMENSIONS

Overall length: 23.3 ft. (7.1 m) without the conveyor.

Overall width: 9.7 ft. (2.96 m).

Overall height: 9.3 ft. (2.83 m).

Transport height: 8.6 ft. (2.62 m) without the mold.

Transport width: 8.5 ft. (2.59 m) without ladder.

Transport length: 27.9 ft. (8.5 m) with conveyor (measurement varies with conveyor tilt, positioning and length) and 23.3 ft. (7.1 m) without conveyor.

FOUR-TRACK PAVER DIMENSIONS

Overall length: 21.3 ft. (6.49 m).

Overall width: 25.1 ft. (7.65 m) extended and 19.1 ft. (5.82 m) retracted with ladder mounted.

Operational height: 11.6 ft. (3.54 m) with 3100 series mold and 10 in. (254 mm) paving depth.

Transport height: 9.7 ft. (2.96 m) without mold and stack, and 10.75 ft. (3.28 m) with 3100 series mold and without stack.

Transport width: 9.5 ft. (2.9 m) without ladder.

Transport length: 29.1 ft. (8.87 m).

THREE-TRACK WEIGHT (approximate)

Standard curb and gutter machine weight: 29,500 lbs. (13,381 kg).

FOUR-TRACK WEIGHT (approximate)

Standard four-track paver with 12 ft. (3.66 m) 3100 series mold weight: 49,500 lbs. (22,453 kg).

Note: Transport and operational weights and dimensions are variable, depending on machine options.

OPTIONS

Barrier/parapet sidemount or centermount.

Monolithic sidewalk and curb and gutter package.

Trimmerhead extensions.

Left-hand discharge trimmerhead.

48 in. (1219 mm) charging conveyor extension to accommodate longer conveyor requirements.

Conveyor truss assembly required on 24 ft. (7.32 m) long conveyors.

Auger provides fast and efficient concrete delivery.

Additional vibrator circuits and controls.

Hold-over assembly, hydraulically powered, required when paving adjacent to existing concrete slab.

Swinging drawbar extension, for use with molds wider than 48 in. (1219 mm).

Slipform molds, consult factory.

V2 paving mold.

24 in. (610 mm) section with supported or self-supported power transition adjuster (PTA).

Auto-Float® attachment.

Polyurethane track pads.

Wireless remote for G+ curb and gutter machines.

3D package for stringless control.

GOMACO Remote Diagnostics (GRD).

On-Board Camera.

Other options are available to customize machine to accommodate applications and customer needs.