

# Montana Department of Transportation Bridge Bureau Approved Construction Equipment List

|                                  |   |
|----------------------------------|---|
| <b>Make:</b>                     | Anderson Underbridge + Chevrolet            |
| <b>Model:</b>                    | HP35 + 3500 HD crew cab long box dually     |
| <b>Equipment Type:</b>           | under bridge access vehicle with pull truck |
| <b>Contractor Modifications:</b> | none  |

### Interstate Approval Conditions

### Non-Interstate Approval Conditions

|                               |                               |
|-------------------------------|-------------------------------|
| <i>Approval Type</i>          | crossing and operating        |
| <i>Speed:</i>                 | no restriction                |
| <i>Weight:</i>                | 19,600 lb + 14,000 lb or less |
| <i>Traffic:</i>               | approved with regular traffic |
| <i>Location Restrictions:</i> | no restriction                |

|                               |                               |
|-------------------------------|-------------------------------|
| <i>Approval Type</i>          | crossing and operating        |
| <i>Speed:</i>                 | no restriction                |
| <i>Weight:</i>                | 19,600 lb + 14,000 lb or less |
| <i>Traffic:</i>               | approved with regular traffic |
| <i>Location Restrictions:</i> | no restriction                |

**Comments:**

Equipment configuration, weights and specifications on following pages. Approval does not apply to load posted bridges. Other construction equipment is not allowed to operate on or cross bridge at the same time this equipment is on the bridge.

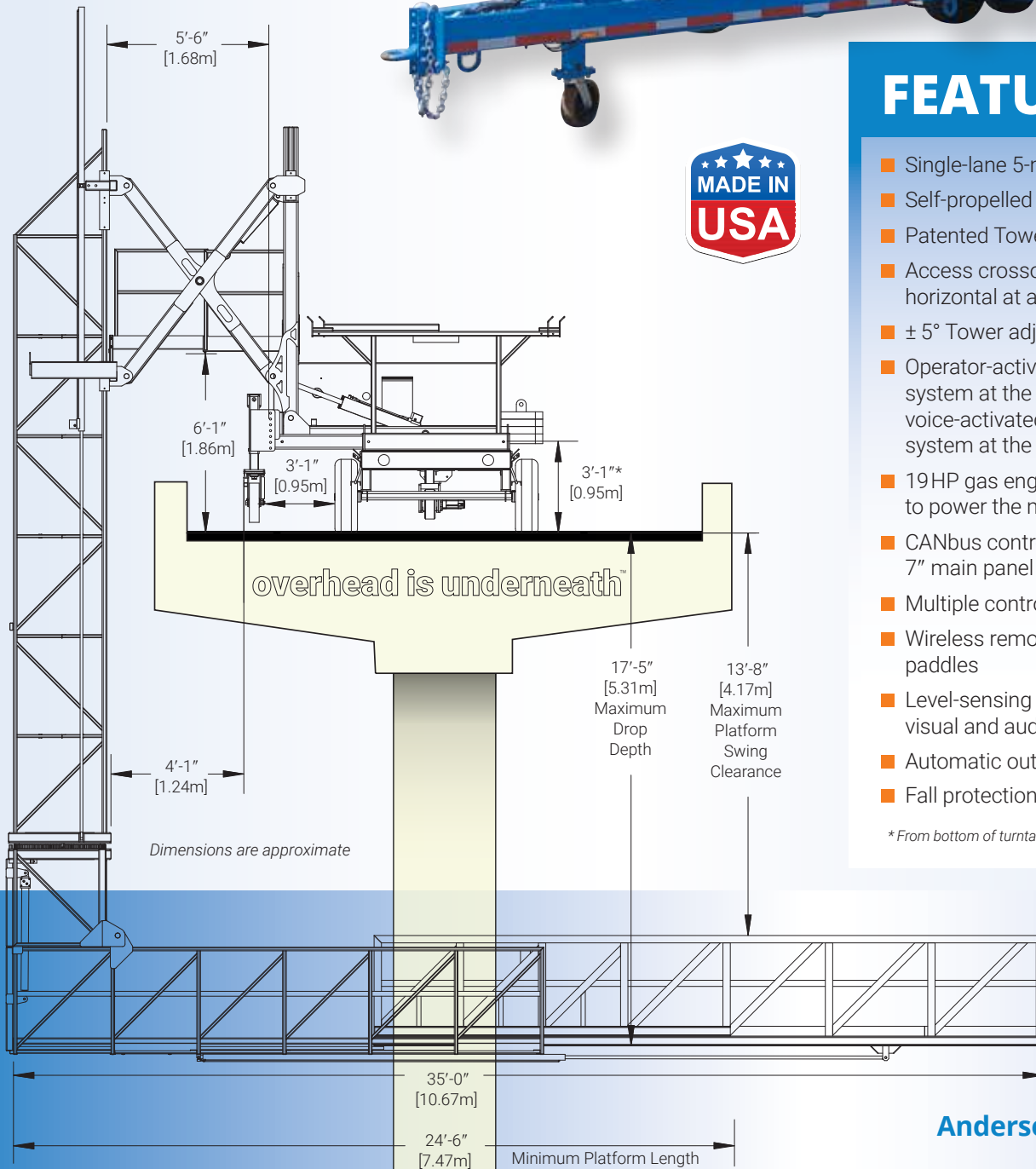
# HP35

## OUR MOST POPULAR MODEL

The HP35 has an extended platform length of 35 ft. and provides 1,400 sq. ft. of under-bridge area from a fixed point on the bridge deck.



SMALL-SIZED TRAILER MODEL



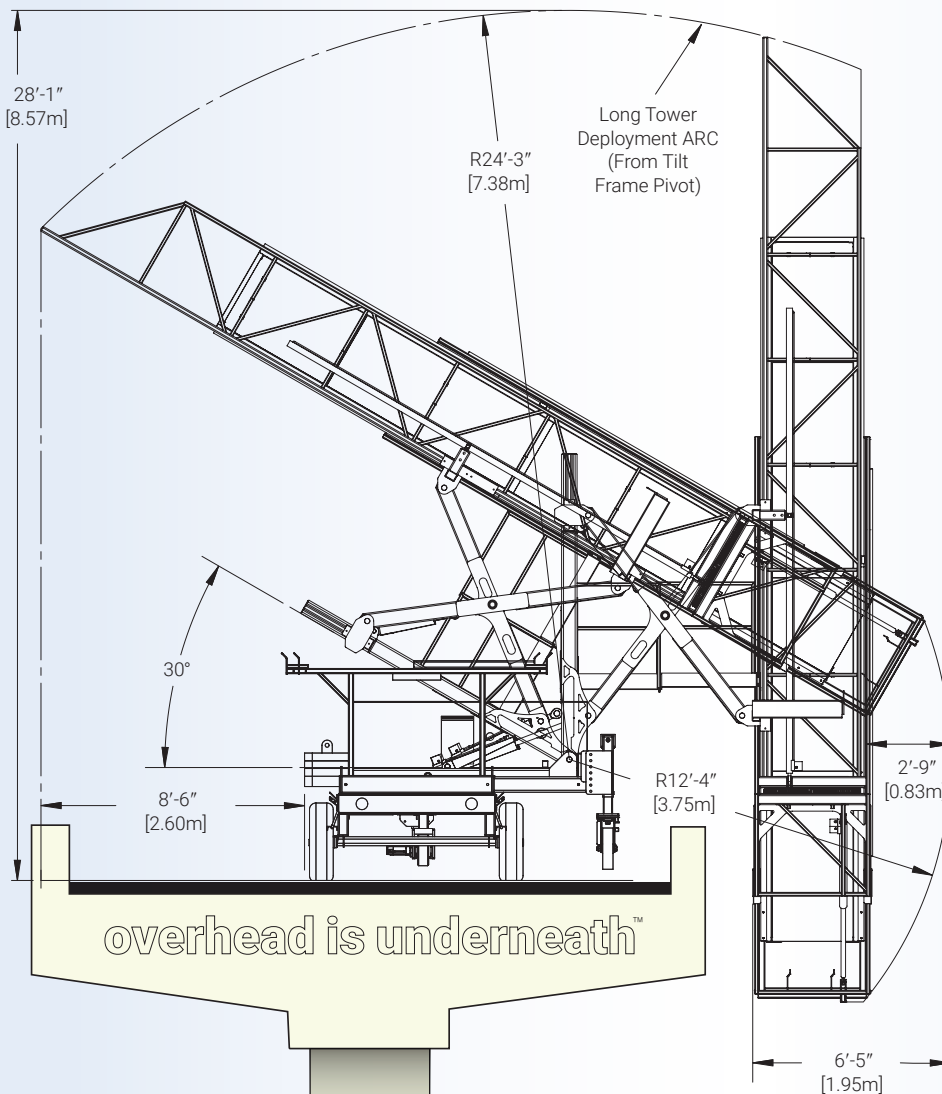
## FEATURES

- Single-lane 5-minute deployment
- Self-propelled hydraulic drive
- Patented Tower Separation System
- Access crossover to tower remains horizontal at all times
- ± 5° Tower adjustment for super elevation
- Operator-activated communication system at the main control panel; voice-activated communication system at the platform
- 19HP gas engine with an auto idle to power the main hydraulic system
- CANbus control system with 7" main panel display
- Multiple control locations
- Wireless remote with proportional paddles
- Level-sensing and load-sensing with visual and audible alarms
- Automatic outriggers
- Fall protection anchorage points

\* From bottom of turntable side tube

when overhead is underneath™

# HP35

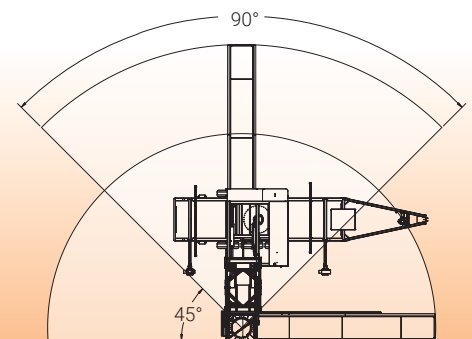


Dimensions are approximate

## SPECS

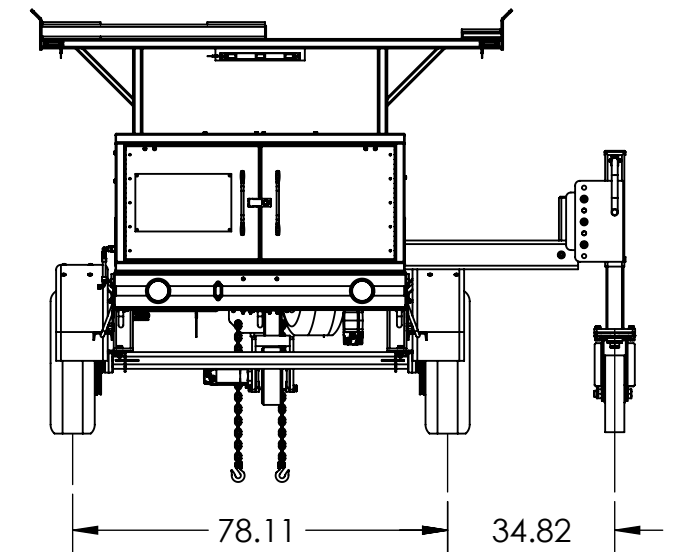
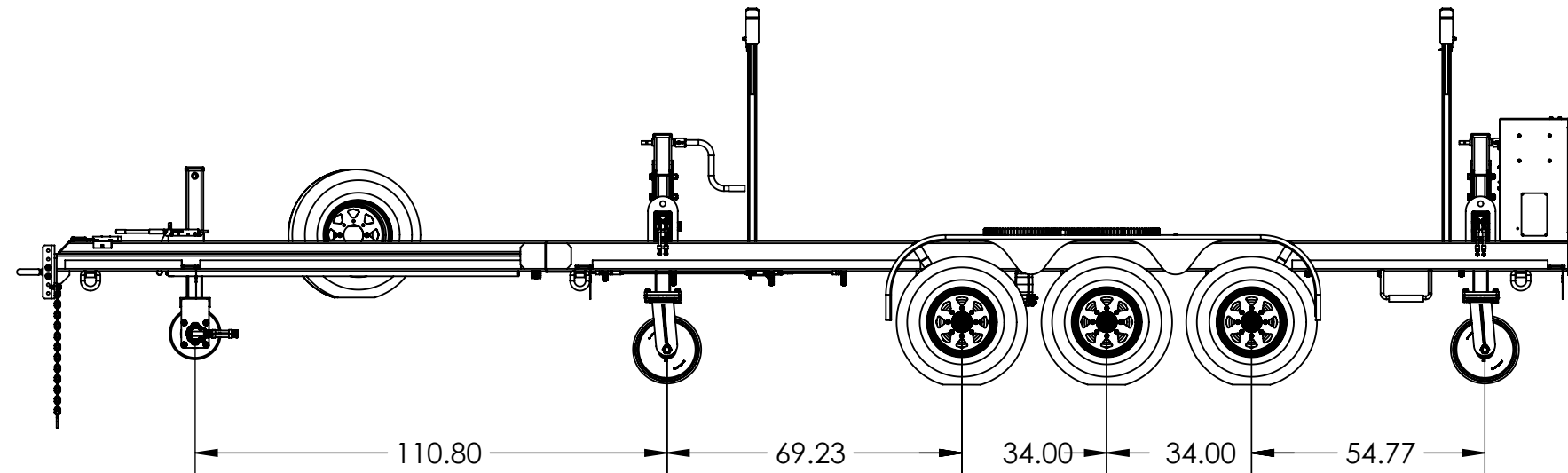
|                                | US          | METRIC  |
|--------------------------------|-------------|---------|
| Platform Length                | 35ft-0in    | 10.67m  |
| Platform Width – I.D. Alum.    | 2ft-7in     | .79m    |
| Platform Width – I.D. Steel    | 3ft-1in     | .94m    |
| Crossover Height Clearance     | 6ft-1in     | 1.86m   |
| Maximum Lowering Depth         | 17ft-5in    | 5.31m   |
| Tower Separation Width         | 5ft-6in     | 1.68m   |
| Total Weight (Approximate)     | 18,600lbs   | 8,463kg |
| Platform Weight Capacity       | 1,000lbs    | 454kg   |
| Platform Rotation              | 180°        |         |
| Maximum Grade                  | 2°          |         |
| Maximum Super Elevation        | 5°          |         |
| Standards Compliance           | ANSI A92.20 |         |
| TRAVEL POSITION SPECIFICATIONS |             |         |
| Unit Length                    | 31ft-6in    | 9.61m   |
| Unit Width                     | 8ft-4in     | 2.54m   |
| Unit Height                    | 11ft-0in    | 3.36m   |

## 180° PLATFORM ROTATION



## OUR PATENTED TOWER SEPARATION SYSTEM

Enables operators to erect and extend the tower and platform over sidewalks and other barriers without restricting under-bridge operations.



NOTE:  
1. BREAK ALL SHARP EDGES.

UNLESS OTHERWISE SPECIFIED  
UNITS = INCHES  
X.X ± 0.1  
X.XX ± 0.06  
X.XXX ± 0.030  
ANGLES ± 1.0°  
DO NOT SCALE  
⊕ ⊞  
Drawing per GEP024  
Drawing and Drafting Guidelines



ANDERSON HYDRA PLATFORMS PROPRIETARY, CONFIDENTIAL, AND/OR TRADE SECRET.  
Do Not Use, Reproduce, Publish, or Disclose to Others Without Express Written Authorization By ANDERSON HYDRA PLATFORMS

TITLE  
ASSEMBLY, BED, HP-35

|                  |           |               |
|------------------|-----------|---------------|
| SIZE             | SCALE     | WEIGHT        |
| B                | 1:40      | ~ 5753.31 LB. |
| CREATED/DRAWN BY | DATE      | SHEET         |
| BGS              | 04/20/16  | 1 OF 1        |
| MODEL            | REFERENCE |               |
| HP-35            |           |               |

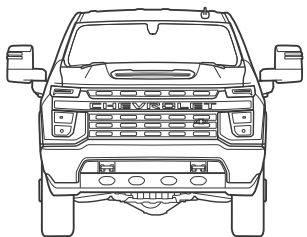
|          |                |          |
|----------|----------------|----------|
| MATERIAL | DRAWING NUMBER | REVISION |
|          | 827327         | 1.10     |

## MAXIMUM CAPACITIES

|                           | REGULAR CAB                       | DOUBLE CAB   | CREW CAB   |
|---------------------------|-----------------------------------|--|--|
| Fuel tank (approximate)   | 36 gallons<br>28 gallons – Diesel | 36 gallons<br>29 gallons – Standard Bed Diesel               | 36 gallons   |
| Cargo volume <sup>1</sup> | 83.5 cubic feet – Long Bed        | 69.6 cubic feet – Standard Bed<br>83.5 cubic feet – Long Bed | 69.6 cubic feet – Standard Bed<br>83.5 cubic feet – Long Bed |

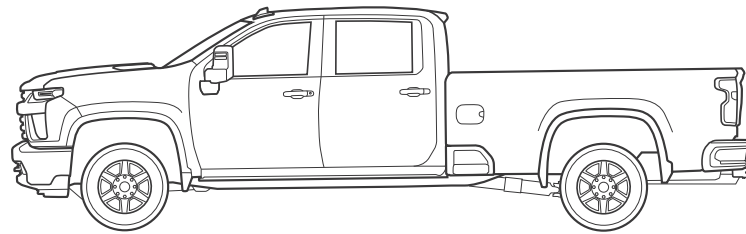
## DIMENSIONS

|                                 | REGULAR CAB   | DOUBLE CAB   | CREW CAB  |
|---------------------------------|---|--|---|
| A – Front track                 | 68.1"   | 68.1"  | 68.1"   |
| B – Width                       | 81.9" – SRW<br>96.8" – DRW                                    | 81.9" – SRW<br>96.8" – DRW   | 81.9" – SRW<br>96.8" – DRW  |
| C – Height                      | 79.9" – 2500 HD<br>80.2" – 3500 HD DRW<br>80.9" – 3500 HD SRW | 79.8" – 2500 HD Long Bed<br>80.0" – 2500 HD Standard Bed<br>80.2" – 3500 HD Long Bed DRW<br>80.9" – 3500 HD Long Bed SRW | 79.7" – 2500 HD Long Bed<br>79.8" – 2500 HD Standard Bed<br><b>80.0" – 3500 HD Long Bed DRW</b><br>80.7" – 3500 HD Long Bed SRW<br>80.9" – 3500 HD Standard Bed |
| D – Wheelbase                   | 141.5"  | 149.4" – Standard Bed<br>162.5" – Long Bed   | 158.9" – Standard Bed<br><b>172.0" – Long Bed</b>   |
| E – Length                      | 235.5"  | 240.4" – Standard Bed<br>256.5" – Long Bed   | 250.0" – Standard Bed<br><b>266.0" – Long Bed</b>   |
| F – Bed height                  | 21.0"   | 21.0"  | 21.0"   |
| G – Bed width, wall-to-wall     | 71.4"   | 71.4"  | 71.4"   |
| H – Width between wheelhousings | 50.5"   | 51.8" – Standard Bed<br>50.5" – Long Bed   | 51.8" – Standard Bed<br>50.5" – Long Bed  |
| I – Bed length at floor         | 98.3"   | 82.3" – Standard Bed<br>98.3" – Long Bed   | 82.3" – Standard Bed<br>98.3" – Long Bed  |
| Rear track                      | 68.3" – SRW<br>75.0" – DRW                                    | 68.3" – SRW<br>75.0" – DRW   | 68.3" – SRW<br><b>75.0" – DRW</b>   |
| Head room (front/rear)          | 43.1"/-   | 43.0"/39.9"  | 43.0"/40.1"   |
| Leg room (front/rear)           | 44.5"/-   | 44.5"/35.2"  | 44.5"/43.4"   |
| Shoulder room (front/rear)      | 66.1"/-   | 66.0"/64.9"  | 66.0"/65.3"   |
| Hip room (front/rear)           | 60.9"/-   | 61.2"/60.2"  | 61.2"/60.2"   |



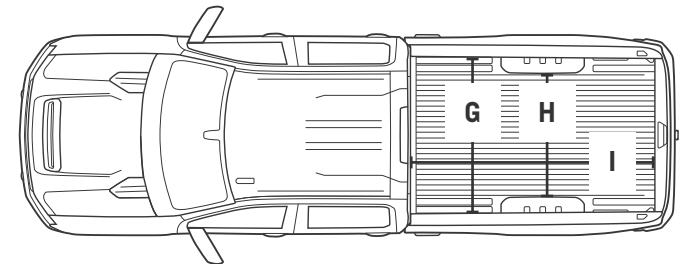
A

C



D

E

T  
F  
L

G

H

I

<sup>1</sup> Cargo and load capacity limited by weight and distribution.

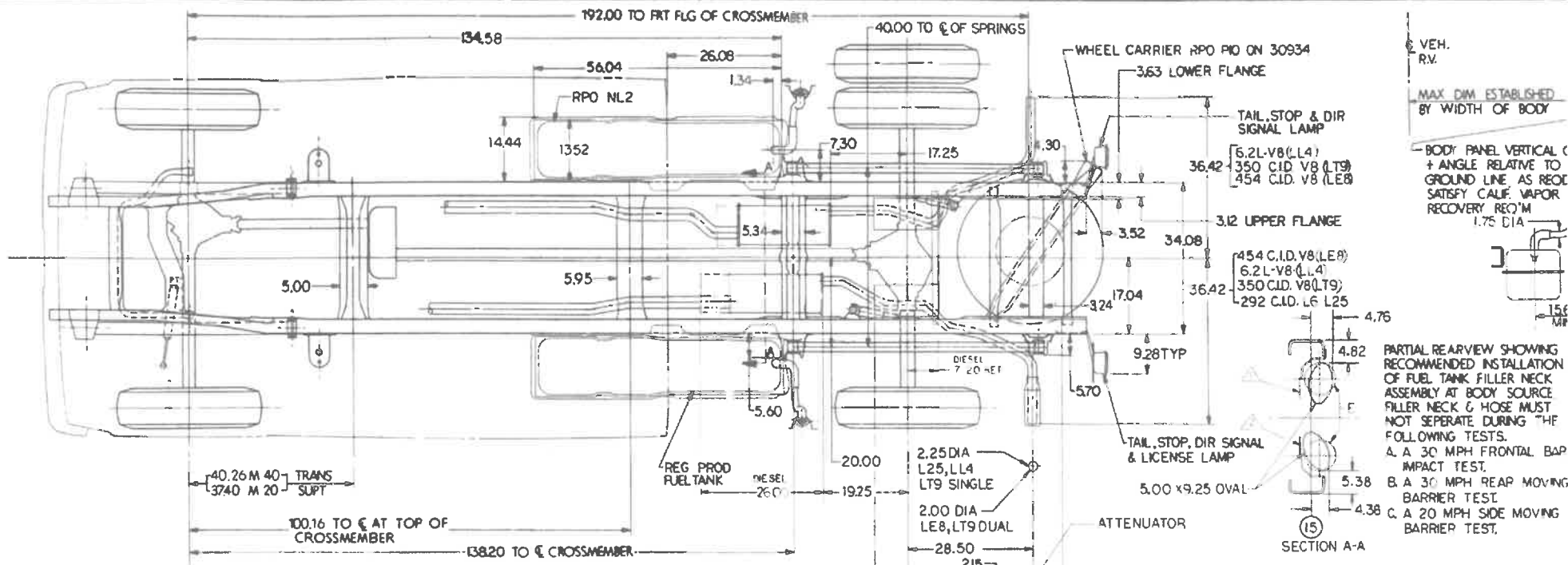
## PAYLOAD & TRAILERING WEIGHT RATINGS – 3500 HD

| MODEL                      | ENGINE          | WHEEL SIZE      | GVWR (LBS.) <sup>1</sup> | MAX PAYLOAD (LBS.) <sup>2</sup> | MAX CONVENTIONAL TRAILERING (LBS.) <sup>3</sup> | MAX GOOSENECK/5TH-WHEEL TRAILERING (LBS.) <sup>3</sup> |
|----------------------------|-----------------|-----------------|--------------------------|---------------------------------|---|--|
| <b>3500 HD REGULAR CAB</b> |                 |                 |                          |                                 |   |  |
| Long Bed<br>2WD SRW        | 6.6L V8 gas     | 18"/20"         | 10,750                   | 4,481                           | 14,500  | 17,200   |
|                            | Duramax 6.6L V8 | 18"/20"         | 11,500                   | 4,215                           | 14,500  | 21,500   |
| Long Bed<br>4x4 SRW        | 6.6L V8 gas     | 18"/20"         | 11,100                   | 4,534                           | 14,500  | 16,950   |
|                            | Duramax 6.6L V8 | 18"/20"         | 11,800                   | 4,217                           | 14,500  | 21,500   |
| Long Bed<br>2WD DRW        | 6.6L V8 gas     | 17"             | 14,000                   | 7,442                           | 16,800  | 16,800   |
|                            | Duramax 6.6L V8 | 17" (5th-Wheel) | 14,000                   | 6,523                           | 20,000  | 32,000   |
|                            | Duramax 6.6L V8 | 17" (Gooseneck) | 14,000                   | 6,465                           | 20,000  | 36,000 <sup>4</sup>                                    |
| Long Bed<br>4x4 DRW        | 6.6L V8 gas     | 17"             | 14,000                   | 7,145                           | 16,800  | 16,710   |
|                            | Duramax 6.6L V8 | 17"             | 14,000                   | 6,196                           | 20,000  | 31,760   |
| <b>3500 HD DOUBLE CAB</b>  |                 |                 |                          |                                 |   |  |
| Long Bed<br>2WD SRW        | 6.6L V8 gas     | 18"/20"         | 11,100                   | 4,373                           | 14,500  | 16,700   |
|                            | Duramax 6.6L V8 | 18"/20"         | 11,850                   | 4,130                           | 14,500  | 21,490   |
| Long Bed<br>4x4 SRW        | 6.6L V8 gas     | 18"/20"         | 11,400                   | 4,391                           | 14,500  | 16,500   |
|                            | Duramax 6.6L V8 | 18"/20"         | 12,150                   | 4,148                           | 14,500  | 21,210   |
| Long Bed<br>2WD DRW        | 6.6L V8 gas     | 17"             | 14,000                   | 6,985                           | 16,400  | 16,400   |
|                            | Duramax 6.6L V8 | 17"             | 14,000                   | 6,059                           | 20,000  | 31,500   |
| Long Bed<br>4x4 DRW        | 6.6L V8 gas     | 17"             | 14,000                   | 6,703                           | 16,390  | 16,270   |
|                            | Duramax 6.6L V8 | 17"             | 14,000                   | 5,777                           | 20,000  | 31,340   |

| MODEL                                   | ENGINE          | WHEEL SIZE | GVWR (LBS.) <sup>1</sup> | MAX PAYLOAD (LBS.) <sup>2</sup> | MAX CONVENTIONAL TRAILERING (LBS.) <sup>3</sup> | MAX GOOSENECK/5TH-WHEEL TRAILERING (LBS.) <sup>3</sup> |
|---|-----------------|------------|--------------------------|---------------------------------|---|--|
| <b>3500 HD CREW CAB</b>                 |                 |            |                          |                                 |   |  |
| Standard Bed<br>2WD SRW                 | 6.6L V8 gas     | 18"/20"    | 11,000                   | 4,316                           | 14,500  | 16,700   |
|   | Duramax 6.6L V8 | 18"/20"    | 11,750                   | 4,135                           | 20,000  | 21,500   |
| Standard Bed<br>4x4 SRW                 | 6.6L V8 gas     | 18"/20"    | 11,350                   | 4,365                           | 14,500  | 16,530   |
|   | Duramax 6.6L V8 | 18"/20"    | 12,100                   | 4,185                           | 20,000  | 21,300   |
| Standard Bed<br>High Country<br>4x4 SRW | 6.6L V8 gas     | 20"        | 11,350                   | 4,068                           | 14,500  | 16,230   |
|   | Duramax 6.6L V8 | 20"        | 12,100                   | 3,915                           | 20,000  | 21,030   |
| Long Bed<br>2WD SRW                     | 6.6L V8 gas     | 18"/20"    | 11,150                   | 4,333                           | 14,500  | 16,700   |
|   | Duramax 6.6L V8 | 18"/20"    | 11,900                   | 4,013                           | 20,000  | 21,330   |
| Long Bed<br>4x4 SRW                     | 6.6L V8 gas     | 18"/20"    | 11,500                   | 4,398                           | 14,500  | 16,410   |
|   | Duramax 6.6L V8 | 18"/20"    | 12,250                   | 4,078                           | 20,000  | 21,040   |
| Long Bed<br>High Country<br>4x4 SRW     | 6.6L V8 gas     | 20"        | 11,500                   | 4,093                           | 14,500  | 16,110   |
|   | Duramax 6.6L V8 | 20"        | 12,250                   | 3,947                           | 20,000  | 20,910   |
| Long Bed<br>2WD DRW                     | 6.6L V8 gas     | 17"        | 14,000                   | 6,894                           | 16,300  | 16,200   |
|   | Duramax 6.6L V8 | 17"        | 14,000                   | 5,892                           | 20,000  | 31,400   |
| Long Bed<br>4x4 DRW                     | 6.6L V8 gas     | 17"        | 14,000                   | 6,610                           | 16,240  | 16,120   |
|   | Duramax 6.6L V8 | 17"        | 14,000                   | 5,662                           | 20,000  | 31,180   |
| Long Bed<br>High Country<br>4x4 DRW     | 6.6L V8 gas     | 17"        | 14,000                   | 6,390                           | 16,020  | 15,900   |
|   | Duramax 6.6L V8 | 17"        | 14,000                   | 5,488                           | 20,000  | 31,000   |

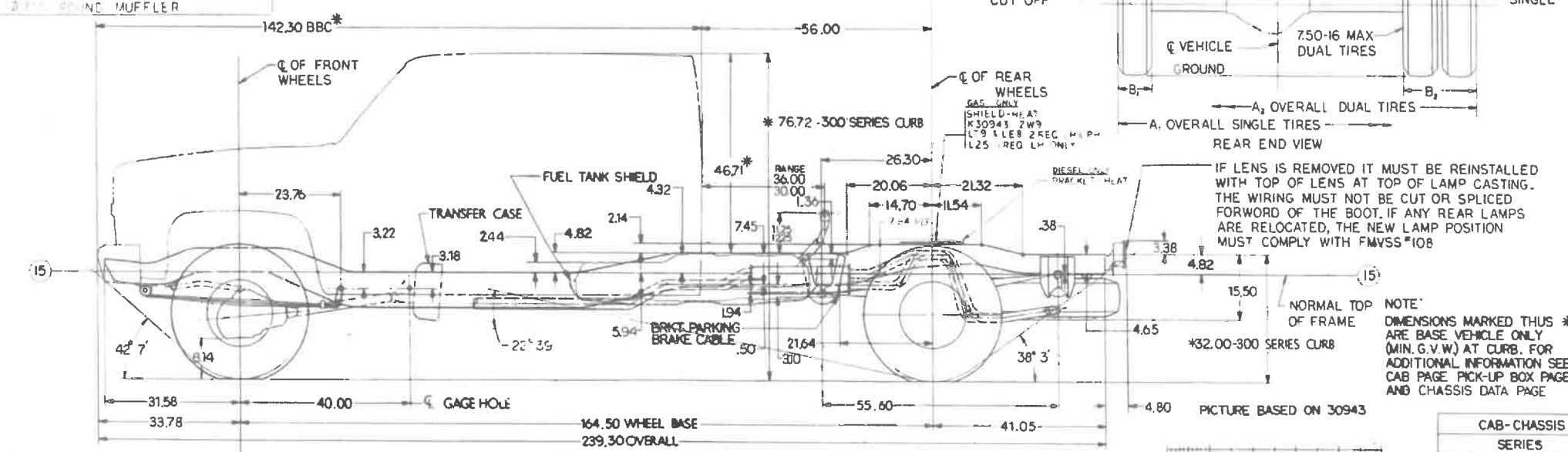
### Trailerling Guide >

<sup>1</sup> Maximum Gross Vehicle Weight Rating (GVWR). When properly equipped; includes weight of vehicle, passengers, cargo and equipment. <sup>2</sup> These maximum payload ratings are intended for comparison purposes only. Before you buy a vehicle or use it to haul people or cargo, carefully review the Vehicle Loading section of the Owner's Manual and check the carrying capacity of your specific vehicle on the label on the inside of the driver door jamb. <sup>3</sup> Maximum trailering ratings are intended for comparison purposes only. Before you buy a vehicle or use it for trailering, carefully review the Trailerling section of the Owner's Manual. The trailering capacity of your specific vehicle may vary. The weight of passengers, cargo and options or accessories may reduce the amount you can trailer. <sup>4</sup> Requires WT with available Max Trailerling Package.



|                | LT235/85R-16 SINGLE | 7.50-16 LT215/85R-16 DUAL (CHEV.) | 7.50-16 LT215/85R-16 DUAL (DANA) |
|----------------|---------------------|-----------------------------------|----------------------------------|
| A <sub>2</sub> | 75.36               | 83.00                             | 93.88                            |
| B <sub>2</sub> | 9.80                | 19.88                             | 19.88                            |
| C <sub>2</sub> | 26.34               | 20.26                             | 25.62                            |
|                | 10.84               | 4.58                              | 10.02                            |

- △ SHIELD-EXH MUFFLER HEAT RH #30943 LT9 & LE8 FOR ITEM E
- △ SHIELD-EXH MUFFLER HEAT LH #30943 L25 & LT9 & LE8 FOR ITEM E



| CAB-CHASSIS     |       |
|-----------------|-------|
| SERIES          |       |
| CV-309          | TV-30 |
| BODY STYLE (43) |       |
| TX000470        |       |