

Montana Department of Transportation Bridge Bureau Approved Construction Equipment List

Make:	Weiler
Model:	P385C with full hopper
Equipment Type:	paver
Contractor Modifications:	none

Interstate Approval Conditions

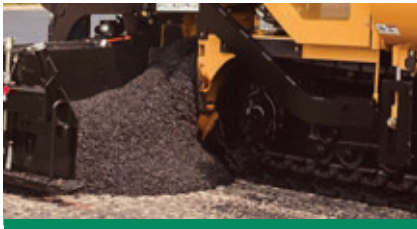
<i>Approval Type</i>	crossing only
<i>Speed:</i>	no restriction
<i>Weight:</i>	43,700 lb or less
<i>Traffic:</i>	approved with regular traffic
<i>Location Restrictions:</i>	no restriction

Non-Interstate Approval Conditions

<i>Approval Type</i>	crossing only
<i>Speed:</i>	no restriction
<i>Weight:</i>	43,700 lb or less
<i>Traffic:</i>	approved with regular traffic
<i>Location Restrictions:</i>	no restriction

Comments:

Equipment configuration, weights, and specifications on following pages. Approval does not apply to load posted bridges. Other construction equipment is not allowed to operate on or cross bridge at the same time this equipment is on the bridge.



BUILT FOR HIGH PRODUCTION.

Engineered and built to exceed the demands of commercial paving, the Weiler P385C incorporates proven designs with new innovations to provide performance, reliability and outstanding mat quality in a wide range of applications.



PROVEN SCREED.

The Weiler designed 3,700 lb (1678 kg) screed delivers outstanding mat quality and a wide paving range. The 8' (2.4m) front mount screed is hydraulically extendable to 15' 8" (4.80 m).



LARGEST UNDERCARRIAGE.

Best-in-class 90" (2286 mm) track length with 68" (1727 mm) of ground contact and 140 mm track chain pitch provides smooth ride and excellent flotation. Automatic track tensioning ensures performance and maximizes component life.



VISIBILITY AND CONTROL.

The P385C has three different operating positions allowing for optimal visibility while the adjustable, magnetic-resistance intelligent steering system allows for reliable control.



DURABLE COMPONENTS.

Highway class chains, conveyor and auger bearings provide long-term reliability. Remote grease lines located on the front of the counterweight provide easy daily maintenance.



FAST SERVICE.

Remote grease lines, spray down system with three coiled hoses and timer, five engine access doors and Caterpillar dealer service and support keep your machine up and running.

P385C SPECIFICATIONS

WEIGHT	22,000 lb	9979 kg
LENGTH	14' 8"	4470 mm
WIDTH	102"	2591 mm
HEIGHT	76"	1930 mm
TRUCK CLEARANCE	19"	482 mm
AUGER DIAMETER	12"	305 mm

SCREED WEIGHT	3,700 lb	1678 kg
MAIN PLATE WIDTH	16.5"	419 mm
EXTENSION PLATE WIDTH	9"	228 mm
SCREED HEAT	Electric - 4 elements	
VIBRATION	2 x 2500 vpm	
AUGER SPEED	150 rpm - variable	

ENGINE	Cat® C3.6 Tier 4F/Stage V	
PAVING SPEED	150 fpm	45 mpm
TRANSPORT SPEED	350 fpm	106 mpm
FUEL CAPACITY	40 gal	151 L
HYDRAULIC CAPACITY	30 gal	114 L
DEF CAPACITY	5 gal	18 L

POWERTRAIN

Cat® C3.6 Tier 4F/Stage V engine with 120 hp (90 kW)
3-Speed hydrostatic drive, 350 fpm (106 mpm) transport speed
Automatic track tensioning
90" (2,286 mm) track length with 68" (1,727 mm) of ground contact
14" (356 mm) performance, poly track pads
6 track rollers per side
140 mm track chain pitch
Hydraulically driven 12 kW generator

OPERATING ENVIRONMENT

Dual operating stations
3 operating positions - high, mid and screed
Push button keypads
LCD display provides conditions and diagnostics
Pause mode enables return to same settings
Steering wheel standard, propel levers optional
Optional screed mounted control panels
LED strobe and works lights

MATERIAL DELIVERY

9-ton (8.1 mt) hopper
Replaceable floor plates
Heavy-duty chains and flight bars
Narrow chain guards
12" (305 mm) Ni-hard augers,
Adjustable push roller
Variable speed and reversible augers and conveyors
Cut-off doors
Hydraulic tow points

SALES AND SERVICE

Sold and serviced through Caterpillar dealers worldwide.

SCREED

8' (2.44 m) to 15' 8" (4.80 m) standard paving width (17' 8" max)
4 element electric heated screed w/ thermostatic control
3/8" (9.5 mm) thick screed plates
Grade and slope controls
Sonic feed sensors
Manual crown adjustment (+/-3%)
Folding rear walkways
Spring loaded end gates w/ heated shoes

SERVICE/MAINTENANCE

8 gal (30 L) spray down system with 3 hoses/nozzles
Braided electrical harnesses and sealed connections
12-volt electric system with automotive-type fuses
Remote grease fittings
5 engine access doors
Lockable vandal covers and engine access doors

OPTIONAL EQUIPMENT

Truck hitch
Hydraulically extendable push rollers
Umbrella
Additional operator seat
Second Steering Indicator Group
Propel levers
DC LED blade lights
Screed mounted control panels
Hand held remote
Auto grade and slope controls
Electric screed extension height adjustment
Power hydraulic slope
Hydraulic power crown
Cut-off shoes
12" (305 mm), 18" (457 mm), 24" (610 mm) bolt- on berm attachment
12" and 18" hydraulic integrated berm
Auger & tunnel extensions
1' heated bold-on screed extensions

WARRANTY

12 months standard. Extended warranty available.