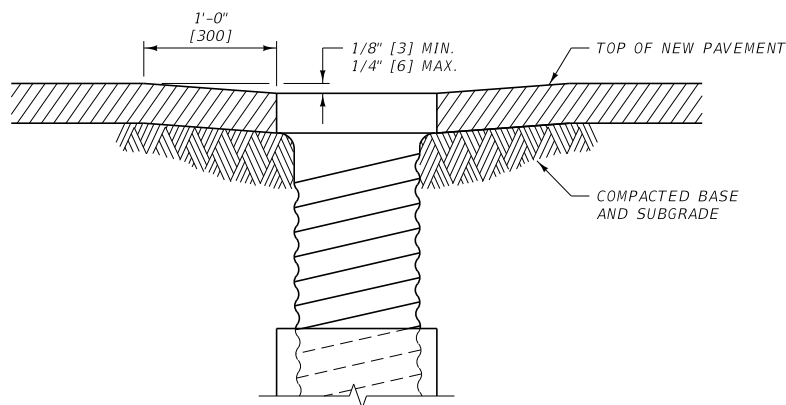


NOTES:

- ① ADJUST MANHOLES UPWARD WITH ADJUSTING RINGS UNDER FRAME.
- ② ADJUST MANHOLES DOWNWARD BY REMOVING CONE AND BARREL SECTIONS AS NECESSARY AND REPLACING WITH SECTIONS OF LENGTH REQUIRED TO MATCH GRADE.
- ③ SLOPE MANHOLE FRAME AS REQUIRED TO MATCH SLOPE OF STREET.
- ④ MAKE FINAL MANHOLE ADJUSTMENTS BEFORE PAVING.

MANHOLE ADJUSTMENT DETAIL



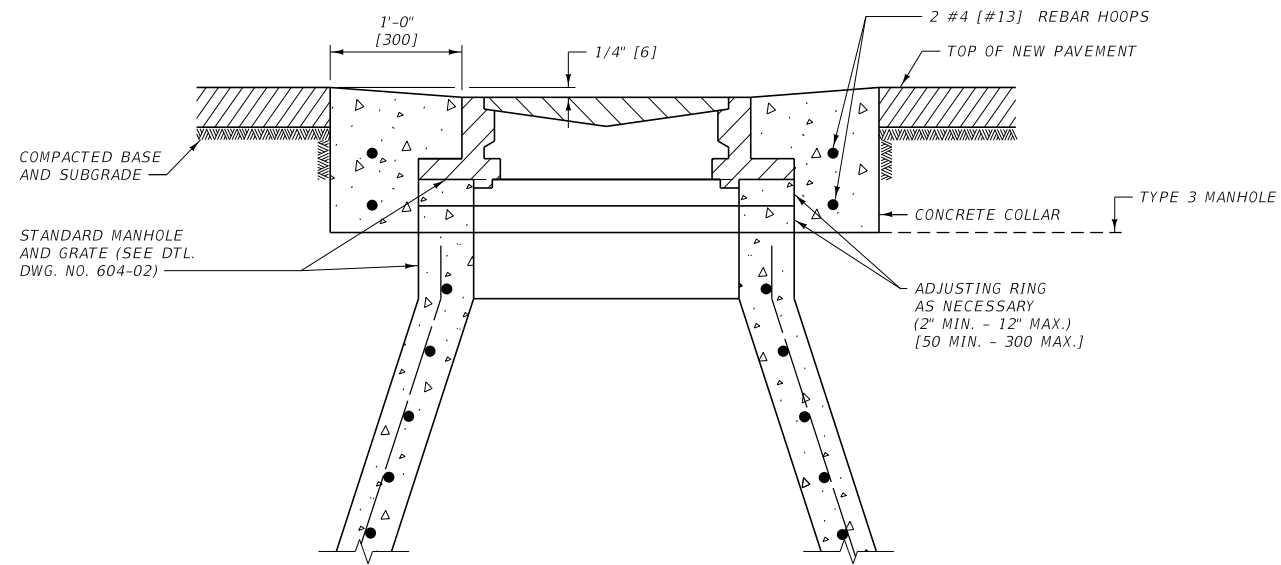
NOTES:

- ① ADJUST WATER VALVES UPWARD OR DOWNWARD AS REQUIRED.
- ② MAKE FINAL ADJUSTMENT BEFORE PAVING.

VALVE BOX ADJUSTMENT DETAIL

UNITS SHOWN IN BRACKETS [] ARE METRIC AND ARE IN MILLIMETERS (mm) UNLESS OTHER UNITS ARE SHOWN.

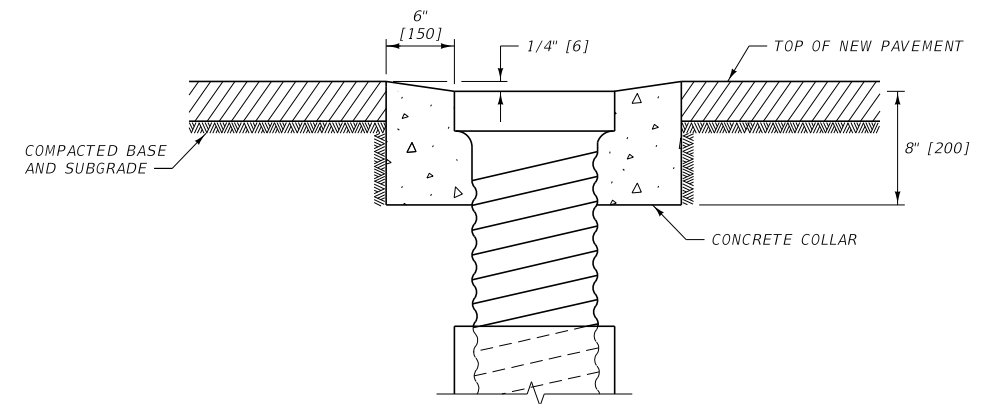
DETAILED DRAWING	
REFERENCE STANDARD SPEC. SECTION 604, 621	DWG. NO. 621-00
MANHOLE AND VALVE BOX ADJUSTMENT DETAILS	
EFFECTIVE: SEPTEMBER 2014	
MDT MONTANA DEPARTMENT OF TRANSPORTATION	



NOTES:

- ① ADJUST MANHOLES UPWARD WITH ADJUSTING RINGS UNDER FRAME.
- ② ADJUST MANHOLES DOWNWARD BY REMOVING CONE AND BARREL SECTIONS AS NECESSARY AND REPLACING WITH SECTIONS OF LENGTH REQUIRED TO MATCH GRADE.
- ③ SLOPE MANHOLE FRAME AS REQUIRED TO MATCH SLOPE OF STREET.
- ④ CONSTRUCT CONCRETE APRON OF CLASS GENERAL CONCRETE OR APPROVED EQUAL.

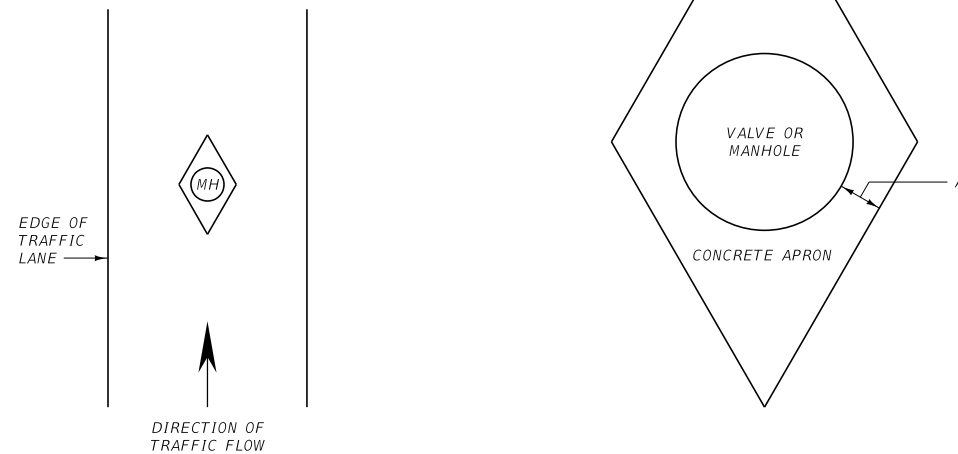
MANHOLE ADJUSTMENT DETAIL



NOTES:

- ① ADJUST WATER VALVES UPWARD OR DOWNWARD AS REQUIRED.
- ② CONSTRUCT CONCRETE APRON OF CLASS GENERAL CONCRETE OR APPROVED EQUAL.

VALVE BOX ADJUSTMENT DETAIL



TYPE	DIMENSIONS	CONCRETE APRON QUANTITIES
	A	CLASS GENERAL CONCRETE
MANHOLE	1'-0" [300]	0.5 C.Y. [0.4m ³]
VALVE	0'-6" [150]	0.1 C.Y. [0.0m ³]

CONCRETE APRON DETAIL

UNITS SHOWN IN BRACKETS [] ARE METRIC AND ARE IN MILLIMETERS (mm) UNLESS OTHER UNITS ARE SHOWN.

DETAILED DRAWING	
REFERENCE STANDARD SPEC. SECTION 604, 621	DWG. NO. 621-05

OPTIONAL MANHOLE AND VALVE BOX ADJUSTMENT DETAILS

EFFECTIVE: SEPTEMBER 2014