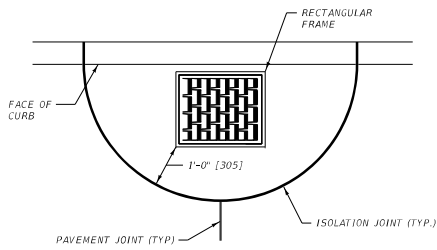


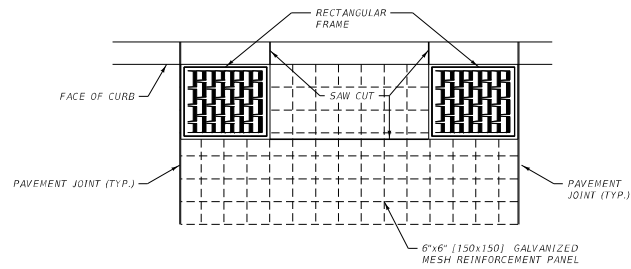
UNITS SHOWN IN BRACKETS () ARE METRIC AND ARE IN MILLIMETERS (mm) UNLESS OTHER UNITS ARE SHOWN.

DETAILED DRAWING	
REFERENCE STANDARD SPEC. SECTION 501	DWG. NO. 501-00

PCCP JOINTS

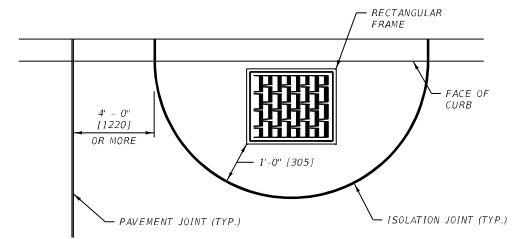


CONDITION A



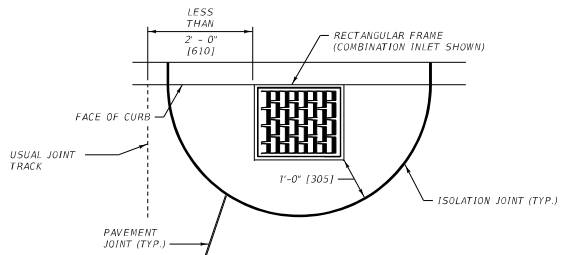
CONDITION B

NOTE: USE CONDITION B WHEN MULTIPLE INLETS ARE PRESENT IN ONE PANEL

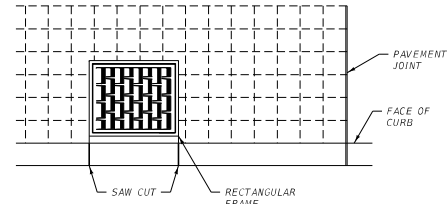


CONDITION C

(SHOULDER USE ONLY)

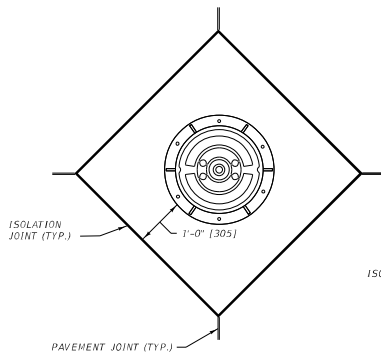


CONDITION D

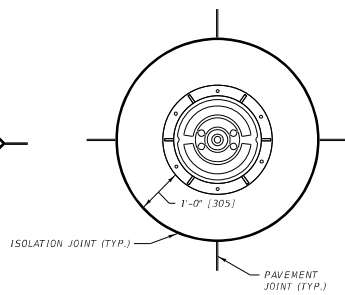


CONDITION E

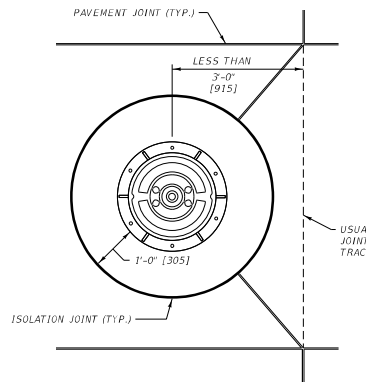
NOTE: USE CONDITION E ONLY IF CONDITIONS C OR D CANNOT BE USED DUE TO INLET PLACEMENT



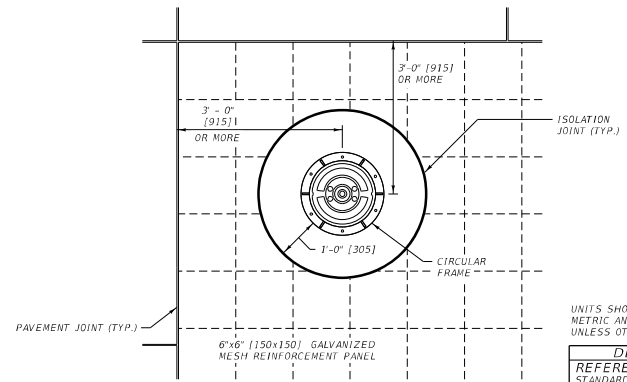
CONDITION G



CONDITION H



CONDITION I

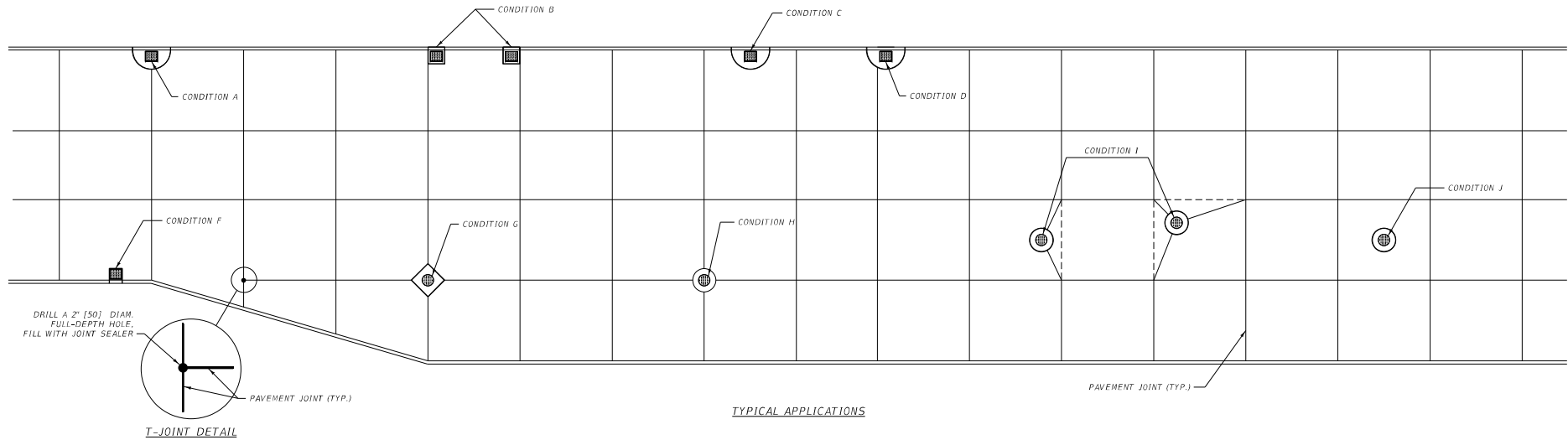


CONDITION J

UNITS SHOWN IN BRACKETS [] ARE METRIC AND ARE IN MILLIMETERS (mm) UNLESS OTHER UNITS ARE SHOWN.

DETAILED DRAWING	
REFERENCE	DWG. NO.
STANDARD SPEC.	501-05
SECTION 301	

PCC ISOLATION JOINTS



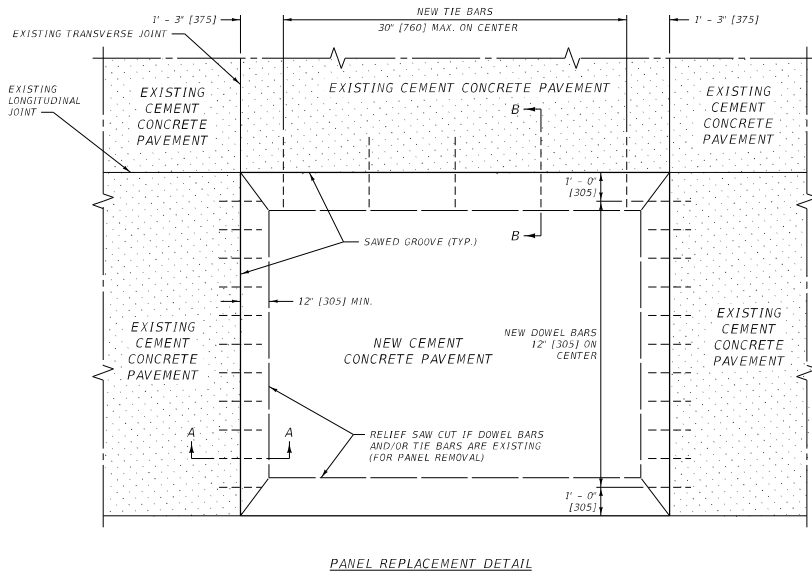
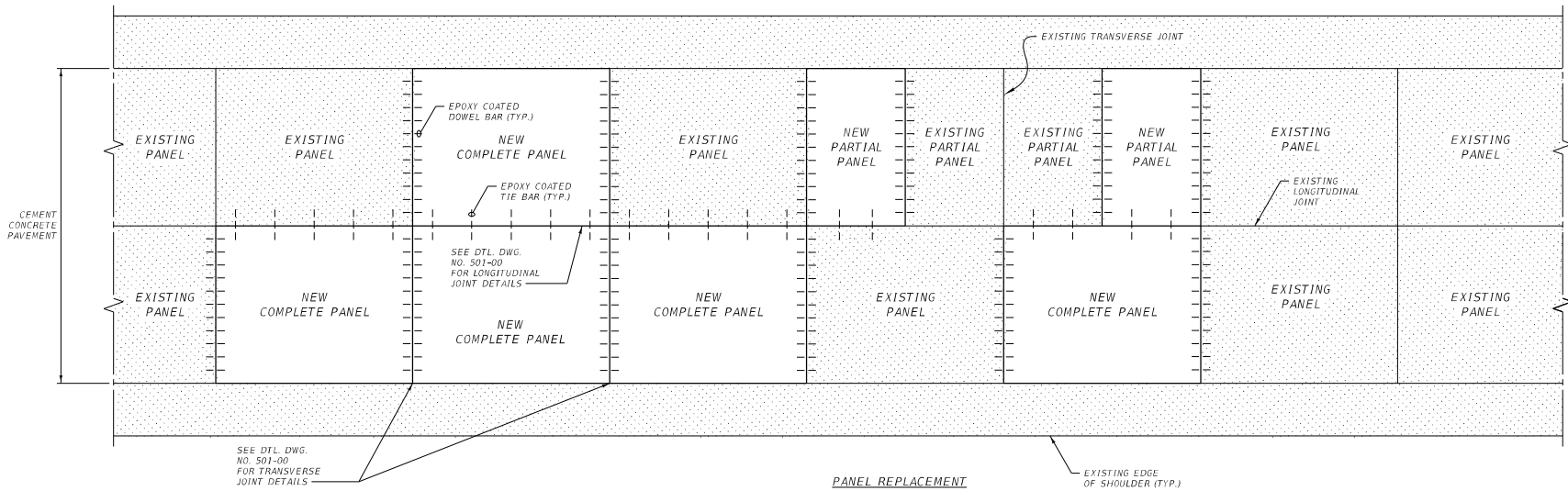
TYPICAL ISOLATION JOINT GUIDELINES		
CONDITION	FEATURE	DISTANCE FROM NEAREST PAVEMENT JOINT
A	DROP OR CURB INLET	-----
B	DROP OR CURB INLET	-----
C	DROP OR CURB INLET	EDGE OF ISOLATION JOINT > 4 FT [1220] FROM JOINT
D	DROP OR CURB INLET	EDGE OF INLET < 2 FT [610] FROM JOINT
F	DROP OR CURB INLET	> 4 FT [1220] FROM JOINT
G	MANHOLE	-----
H	MANHOLE	-----
I	MANHOLE	CENTER OF MANHOLE < 3 FT [915] FROM JOINT
J	MANHOLE	CENTER OF MANHOLE > 3 FT [915] FROM JOINT

UNITS SHOWN IN BRACKETS [] ARE METRIC AND ARE IN MILLIMETERS (mm) UNLESS OTHER UNITS ARE SHOWN.

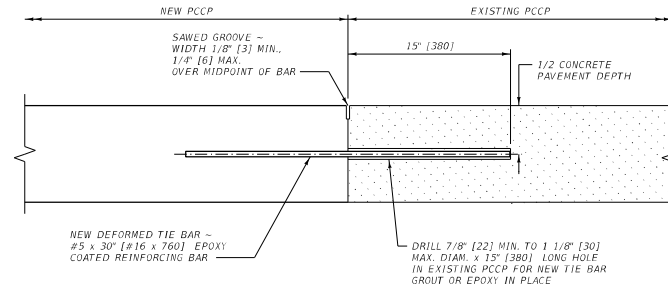
DETAILED DRAWING
 REFERENCE DWG. NO.
 STANDARD SPEC. 501-10
 SECTION 501

PCCP
 ISOLATION JOINTS

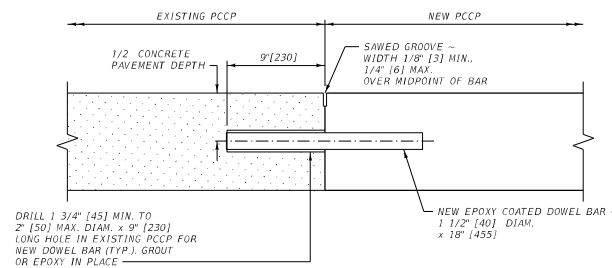
MDT MONTANA DEPARTMENT OF TRANSPORTATION



PANEL REPLACEMENT DETAIL



SECTION B-B



SECTION A-A

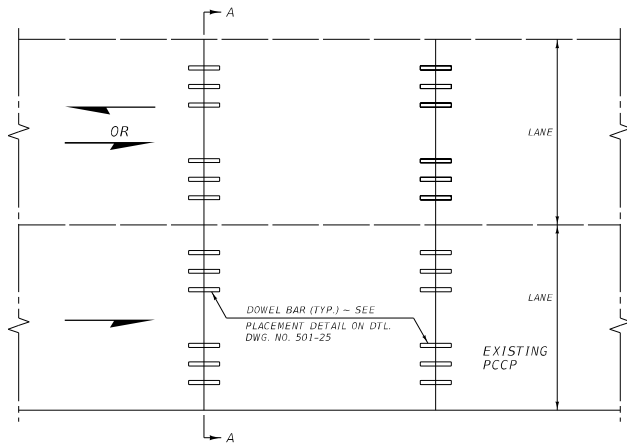
NOTES:

- ① INSTALL TIE BARS ALONG LONGITUDINAL JOINTS BETWEEN PANEL REPLACEMENT AND EXISTING PCCP. TIE BARS ARE NOT INSTALLED BETWEEN PCCP PAVEMENT AND PMS SHOULDERS.
- ② PLACE NEW DOWEL BARS BETWEEN EXISTING DOWEL BARS. DO NOT PLACE ANY DOWEL BARS CLOSER THAN 1'-0" [305] FROM EDGE OF CONCRETE PANEL.

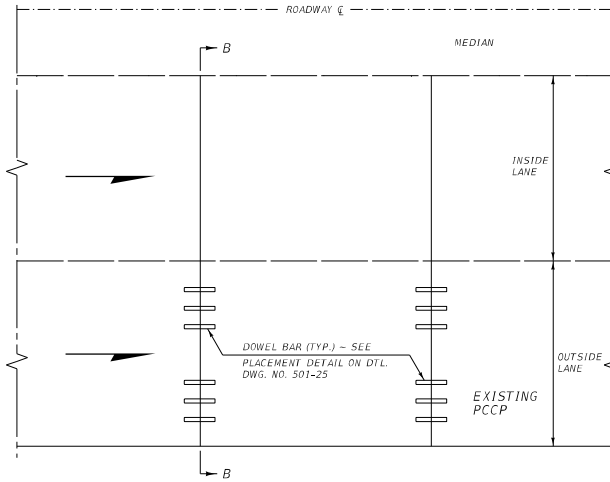
UNITS SHOWN IN BRACKETS [] ARE METRIC AND ARE IN MILLIMETERS (mm) UNLESS OTHER UNITS ARE SHOWN.

DETAILED DRAWING	
REFERENCE STANDARD SPEC. SECTION 501	DWG. NO. 501-15

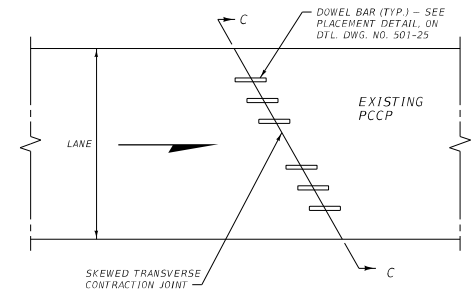
PCCP REPAIR



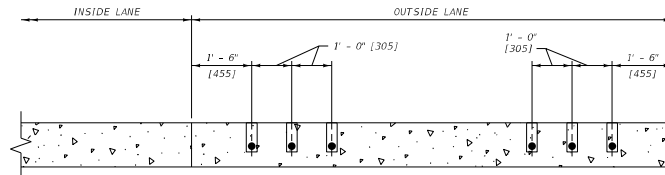
DOWEL BAR RETROFIT
 FOR TWO LANE DIVIDED HIGHWAY (ONE WAY TRAFFIC)
 FOR EACH LANE IN UNDIVIDED HIGHWAY (TWO WAY TRAFFIC)



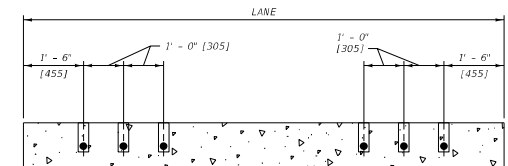
DOWEL BAR RETROFIT FOR ONE LANE
 DIVIDED HIGHWAY (ONE WAY TRAFFIC)



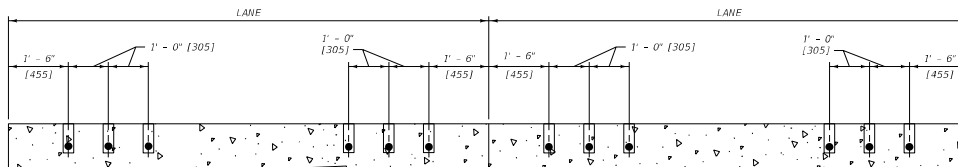
SKEWED JOINT DETAIL



SECTION B-B



SECTION C-C
 ALL DIMENSIONS PERPENDICULAR TO DIRECTION OF TRAVEL



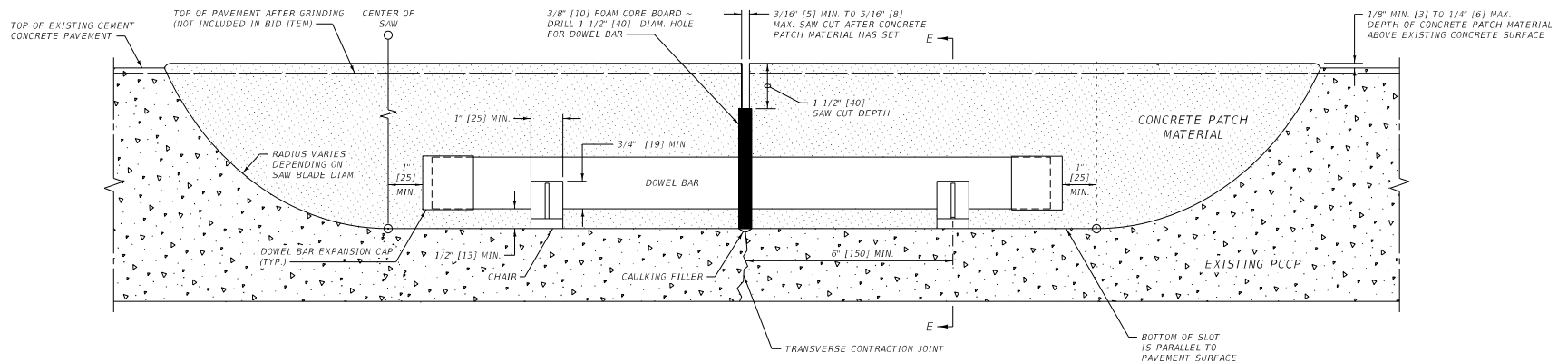
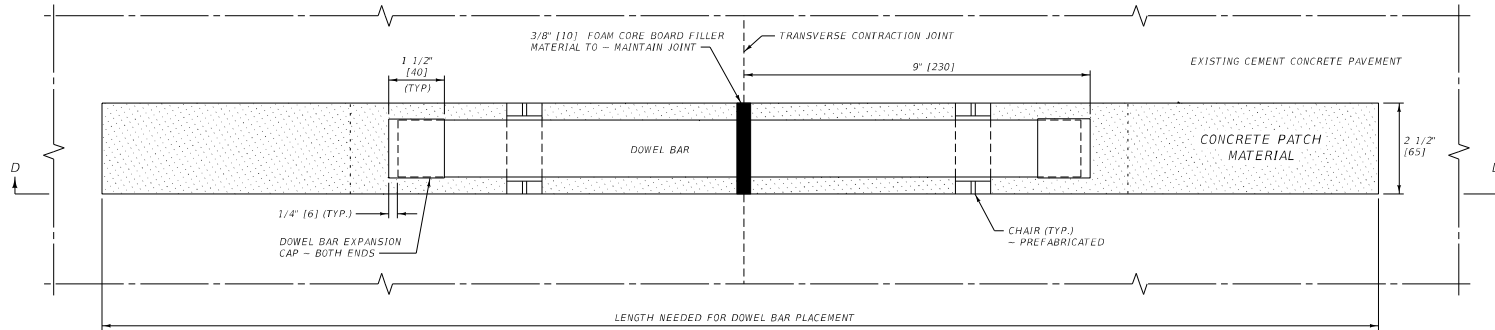
SECTION A-A

UNITS SHOWN IN BRACKETS [] ARE METRIC AND ARE IN MILLIMETERS (mm) UNLESS OTHER UNITS ARE SHOWN.

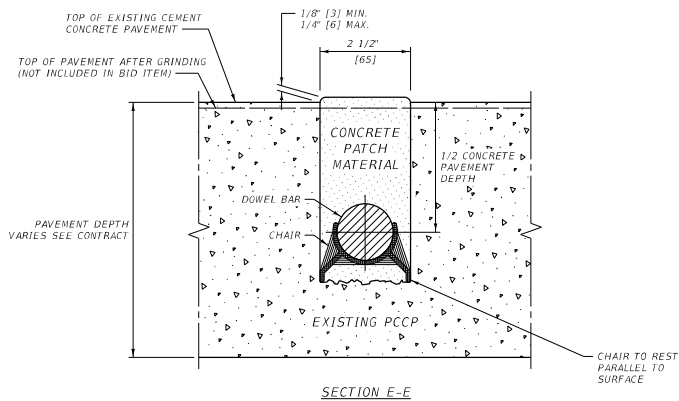
DETAILED DRAWING	
REFERENCE	DWG. NO.
STANDARD SPEC.	501-20
SECTION 501	

DOWEL BAR RETROFIT FOR PCCP

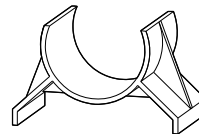
MDT MONTANA DEPARTMENT OF TRANSPORTATION



SECTION D-D
DOWEL BAR PLACEMENT DETAIL



SECTION E-E



CHAIR DETAIL

NOTE: USE PLASTIC CHAIR OR AS APPROVED BY PROJECT MANAGER

DOWEL BAR DIMENSION TABLE

PCCP THICKNESS	DOWEL BAR DIMENSIONS		
	DIAMETER	MIN. LENGTH	SPACING
< 8" [200]	1" [25]	14" [350]	12" [300]
8" to 9.5" [200 to 240]	1 1/4" [32]	14" [350]	12" [300]
≥ 10" [250]	1 1/2" [38]	14" [350]	12" [300]

UNITS SHOWN IN BRACKETS [] ARE METRIC AND ARE IN MILLIMETERS (mm) UNLESS OTHER UNITS ARE SHOWN.

DETAILED DRAWING
REFERENCE DWG. NO.
STANDARD SPEC. 501-25
SECTION 501

DOWEL BAR RETROFIT
FOR PCCP

MDT MONTANA DEPARTMENT
OF TRANSPORTATION