

R2-1  
48" x 60"  
[1200 x 1500]  
②



G20-2  
48" x 24"  
[1200 x 600]



END OF PROJECT

BEGINNING OF PROJECT

+500' [+150 m]  
250' [75 m]  
+250' [+75 m]  
250' [75 m]  
0

1250' [375 m]

-1250' [-375 m]  
500' [150 m]  
-1750' [-525 m]  
250' [75 m]  
-2000' [-600 m]

2150' [645 m]

-4150' [-1245 m]  
500' [150 m]  
-4650' [-1395 m]

1000' [300 m]

-5650' [-1695 m]

1880' [565 m]

-7530' [-2260 m]

500' [150 m]

-8030' [-2410 m]

500' [150 m]

-8530' [-2560 m]

NOTES:

- ① THIS SIGN LAYOUT IS INTENDED TO BE A PERMANENT INSTALLATION FOR THE DURATION OF THE CONSTRUCTION PROJECT, AS APPROVED BY THE PROJECT MANAGER. COVER OR REMOVE SIGNS WHEN NOT IN USE, INCLUDING UNWARRANTED SPEED LIMIT SIGNS. REMOVE ANY SIGN SUPPORTS IF THEY WILL NOT BE NEEDED WITHIN 90 DAYS.
- ② POST THE END OF WORK ZONE SPEED LIMIT CONSISTING OF ONE LIMIT WHEN THE NORMAL POSTED SPEED LIMIT FOR ALL VEHICLES IS THE SAME. WHEN CAR AND TRUCK SPEED LIMITS DIFFER, POST BOTH LIMITS ON A SINGLE SIGN.
- ③ INCLUDE REGULATORY SIGNING ONLY IF A WORK ZONE OR ROADWAY HAS CONDITIONS THAT WARRANT SPEED RESTRICTIONS. MODIFY REGULATORY SIGNS TO MATCH ADJACENT REGULATIONS.
- ④ SET UP THIS SIGN LAYOUT IN EACH TRAFFIC DIRECTION.
- ⑤ IN ADDITION TO THE SIGNS SHOWN, INCLUDE THE APPROPRIATE FOUR-LANE WORK ZONE SIGNS (DTL. DWG. 618-24) WHEN A WORK AREA FALLS AT THE BEGIN OR END OF THE WORK ZONE.
- ⑥ DIVIDED FOUR-LANE IS SHOWN. FOR UN-DIVIDED FOUR-LANE, PLACE SIGNS ON RIGHT SIDE ONLY.

\* DENOTES SIGNS UNIQUE TO MONTANA.

FOUR-LANE WORK AREA SIGN LAYOUT (WHEN APPLICABLE, SEE DTL. DWG. 618-24)

⑥

(2) R2-15\*  
48" x 60"  
[1500 x 900]



(2) G20-1  
60" x 36"  
[1500 x 900]



MILEAGE TO THE NEAREST MILE OR

(2) W20-1  
48" x 48"  
[1200 x 1200]  
(USE WHEN LESS THAN 2 MILES [3.2 km])



UNITS SHOWN IN BRACKETS [ ] ARE METRIC AND ARE IN MILLIMETERS (mm) UNLESS OTHER UNITS ARE SHOWN.

### DETAILED DRAWINGS

REFERENCE STANDARD SPEC. SECTION 618	DWG. NO. 618-20
--------------------------------------	-----------------

### DIVIDED FOUR-LANE WORK ZONE

EFFECTIVE: JAN 23, 2020



**MONTANA**  
Department of Transportation

--REVISED--  
JUN 27, 2024

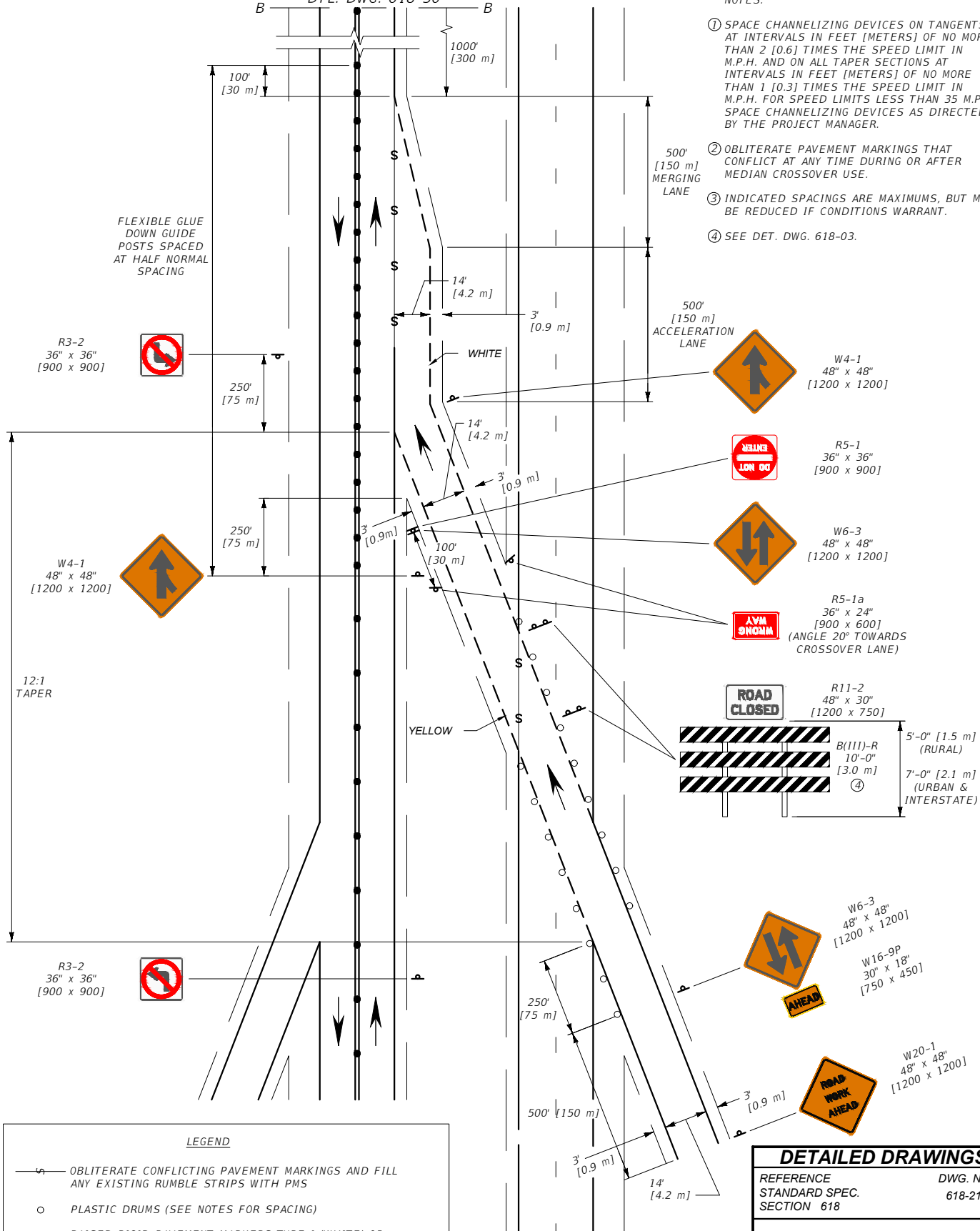
5/14/2024 1:36 PM

STDDR618020.DWG

MATCH LINE FROM  
DTL. DWG. 618-30

NOTES:

- ① SPACE CHANNELIZING DEVICES ON TANGENTS AT INTERVALS IN FEET [METERS] OF NO MORE THAN 2 [0.6] TIMES THE SPEED LIMIT IN M.P.H. AND ON ALL TAPER SECTIONS AT INTERVALS IN FEET [METERS] OF NO MORE THAN 1 [0.3] TIMES THE SPEED LIMIT IN M.P.H. FOR SPEED LIMITS LESS THAN 35 M.P.H. SPACE CHANNELIZING DEVICES AS DIRECTED BY THE PROJECT MANAGER.
- ② OBLITERATE PAVEMENT MARKINGS THAT CONFLICT AT ANY TIME DURING OR AFTER MERGING LANE USE.
- ③ INDICATED SPACINGS ARE MAXIMUMS, BUT MAY BE REDUCED IF CONDITIONS WARRANT.
- ④ SEE DET. DWG. 618-03.



FLEXIBLE GLUE  
DOWN GUIDE  
POSTS SPACED  
AT HALF NORMAL  
SPACING

R3-2  
36" x 36"  
[900 x 900]

W4-1  
48" x 48"  
[1200 x 1200]

12:1  
TAPER

R3-2  
36" x 36"  
[900 x 900]

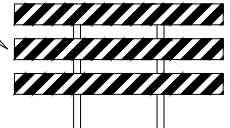
W4-1  
48" x 48"  
[1200 x 1200]

R5-1  
36" x 36"  
[900 x 900]

W6-3  
48" x 48"  
[1200 x 1200]

R5-1a  
36" x 24"  
[900 x 600]  
(ANGLE 20° TOWARDS  
CROSSOVER LANE)

R11-2  
48" x 30"  
[1200 x 750]



5'-0" [1.5 m]  
(RURAL)  
7'-0" [2.1 m]  
(URBAN &  
INTERSTATE)

W6-3  
48" x 48"  
[1200 x 1200]

W16-9P  
30" x 18"  
[750 x 450]

W20-1  
48" x 48"  
[1200 x 1200]

**LEGEND**

- S — OBLITERATE CONFLICTING PAVEMENT MARKINGS AND FILL ANY EXISTING RUMBLE STRIPS WITH PMS
- PLASTIC DRUMS (SEE NOTES FOR SPACING)
- — RAISED RIGID PAVEMENT MARKERS TYPE I (WHITE) OR TYPE II (YELLOW) AT 5' [1.5 m] SPACING
- ==== DOUBLE YELLOW PAINT OR DOUBLE PLASTIC PAVEMENT MARKING TABS AT 5' [1.5 m] SPACING
- FLEXIBLE GLUE-DOWN GUIDE POSTS ON TWO-LANE (SEE NOTES FOR SPACING EXCEPT AS SHOWN)

UNITS SHOWN IN BRACKETS [ ] ARE METRIC AND ARE IN MILLIMETERS (mm) UNLESS OTHER UNITS ARE SHOWN.

**DETAILED DRAWINGS**

REFERENCE STANDARD SPEC. SECTION 618	DWG. NO. 618-21
--------------------------------------	-----------------

**TEMPORARY ENTRANCE RAMP MEDIAN CROSSOVER**

EFFECTIVE: JAN 23, 2020

--REVISED--  
JUN 27, 2024



**LEGEND**

- OBLITERATE CONFLICTING PAVEMENT MARKINGS AND FILL ANY EXISTING RUMBLE STRIPS WITH PMS
- PLASTIC DRUMS (SEE NOTES FOR SPACING)
- — RAISED RIGID PAVEMENT MARKERS TYPE I (WHITE) OR TYPE II (YELLOW) AT 5' [1.5 m] SPACING
- ==== DOUBLE YELLOW PAINT OR DOUBLE PLASTIC PAVEMENT MARKING TABS AT 5' [1.5 m] SPACING
- FLEXIBLE GLUE-DOWN GUIDE POSTS ON TWO-LANE (SEE NOTES FOR SPACING EXCEPT AS SHOWN)

E5-1  
60" x 48"  
[1500 x 1200]



R3-2  
36" x 36"  
[900 x 900]



FLEXIBLE GLUE  
DOWN GUIDE  
POSTS SPACED  
AT HALF NORMAL  
SPACING

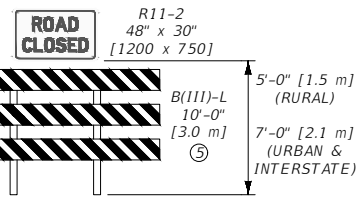
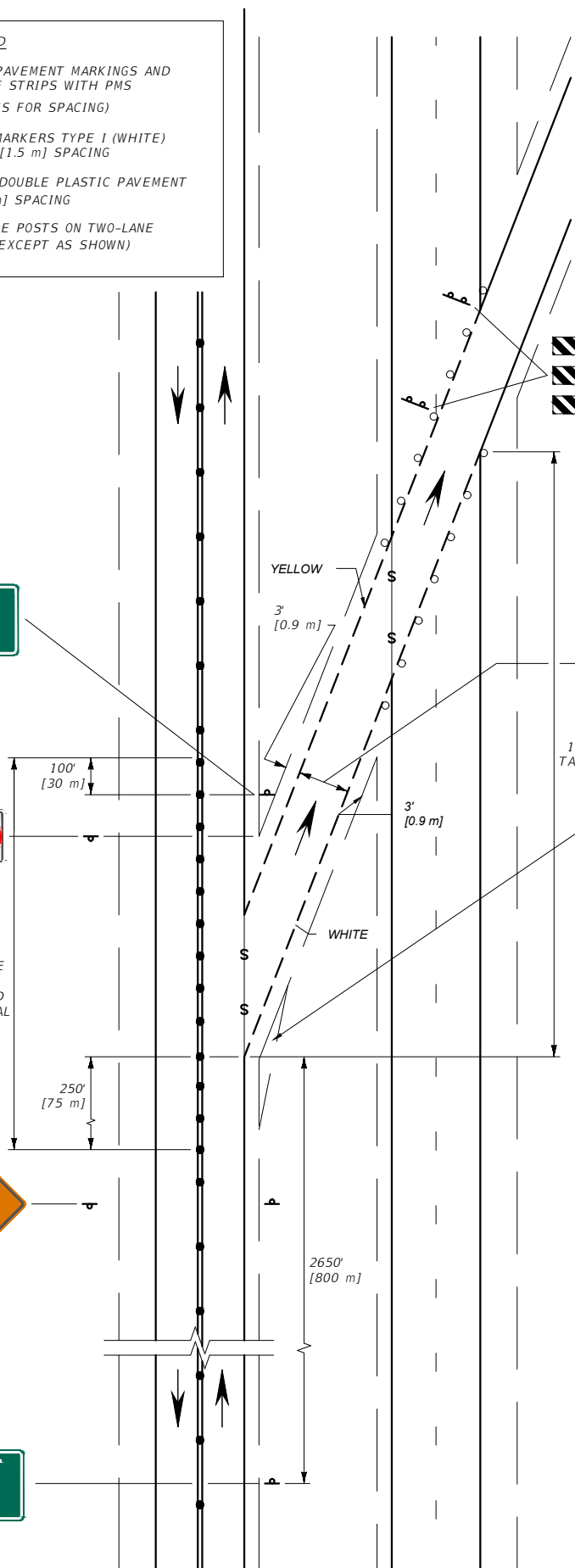
W6-3  
48" x 48"  
[1200 x 1200]



E7-1  
72" x 36"  
[1800 x 900]



UNITS SHOWN IN BRACKETS [ ] ARE METRIC AND ARE IN MILLIMETERS (mm) UNLESS OTHER UNITS ARE SHOWN.



ADDITIONAL PLANT MIX SURFACING TO ALLOW FOR SAFE TURNING MOVEMENTS (SEE DTL. DWG. 618-32 FOR DIMENSIONS)

**NOTES:**

- ① SPACE CHANNELIZING DEVICES ON TANGENTS AT INTERVALS IN FEET [METERS] OF NO MORE THAN 2 [0.6] TIMES THE SPEED LIMIT IN M.P.H. AND ON ALL TAPER SECTIONS AT INTERVALS IN FEET [METERS] OF NO MORE THAN 1 [0.3] TIMES THE SPEED LIMIT IN M.P.H. FOR SPEED LIMITS LESS THAN 35 M.P.H. SPACE CHANNELIZING DEVICES AS DIRECTED BY THE PROJECT MANAGER.
- ② OBLITERATE ALL PAVEMENT MARKINGS THAT CONFLICT AT ANY TIME DURING OR AFTER MEDIAN CROSSOVER USE.
- ③ INDICATED SPACINGS ARE MAXIMUMS, BUT MAY BE REDUCED IF CONDITIONS WARRANT.
- ④ PROVIDE ADDITIONAL SIGNING FOR EXIT DESTINATION WHEN EXIT DELINEATION IS NOT VISIBLE.
- ⑤ SEE DET. DWG. 618-03.

**DETAILED DRAWINGS**

REFERENCE STANDARD SPEC. SECTION 618	DWG. NO. 618-22
--------------------------------------	-----------------

**TEMPORARY EXIT RAMP  
MEDIAN CROSSOVER**

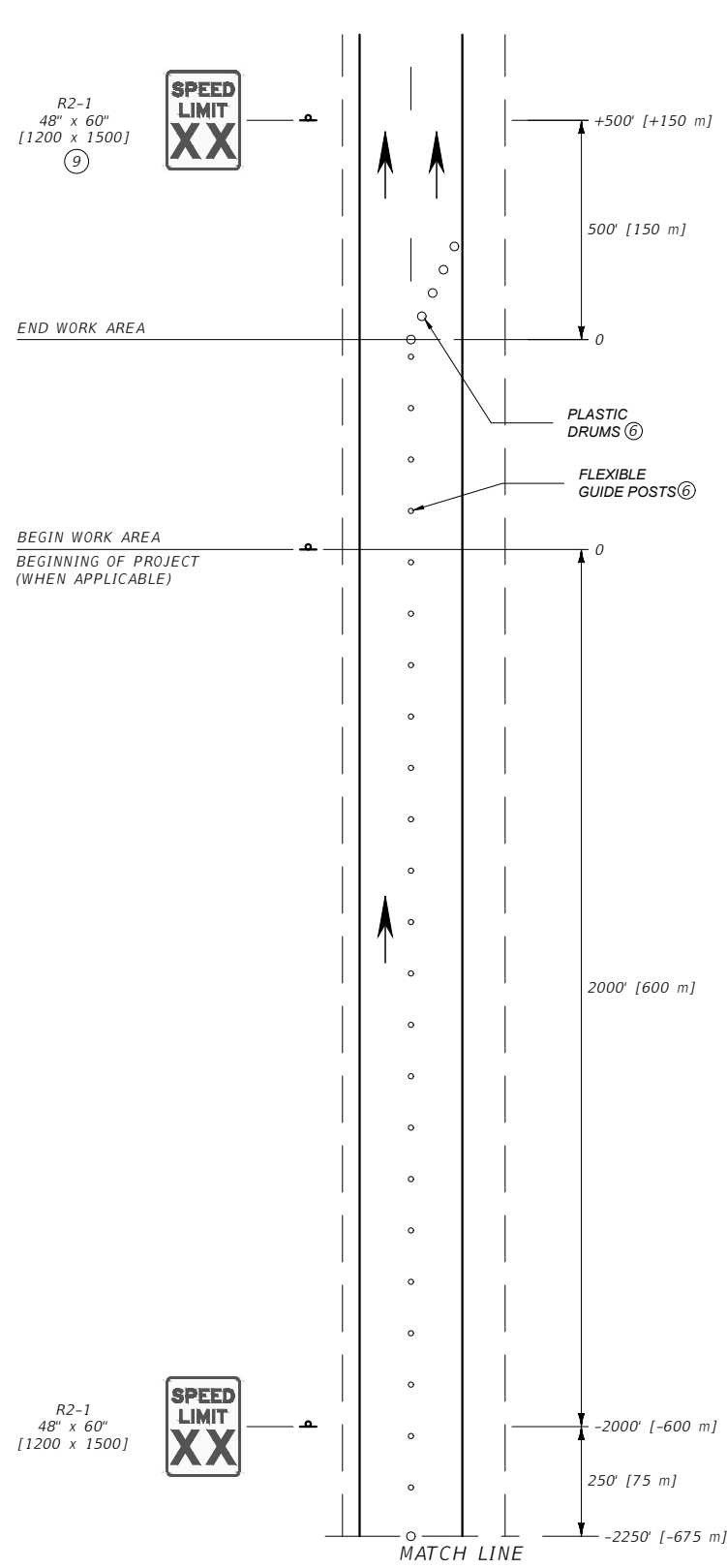
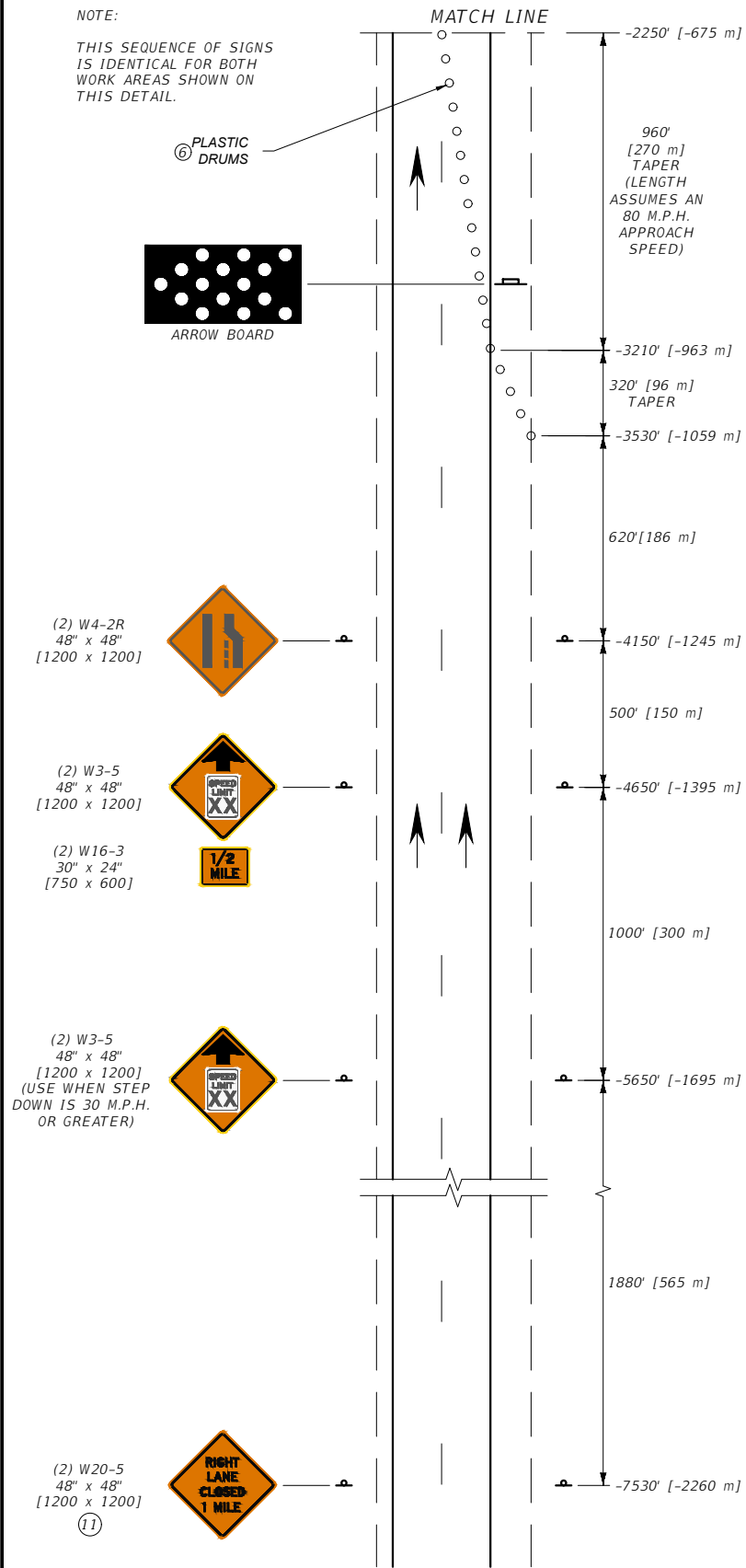
EFFECTIVE: JAN 23, 2020



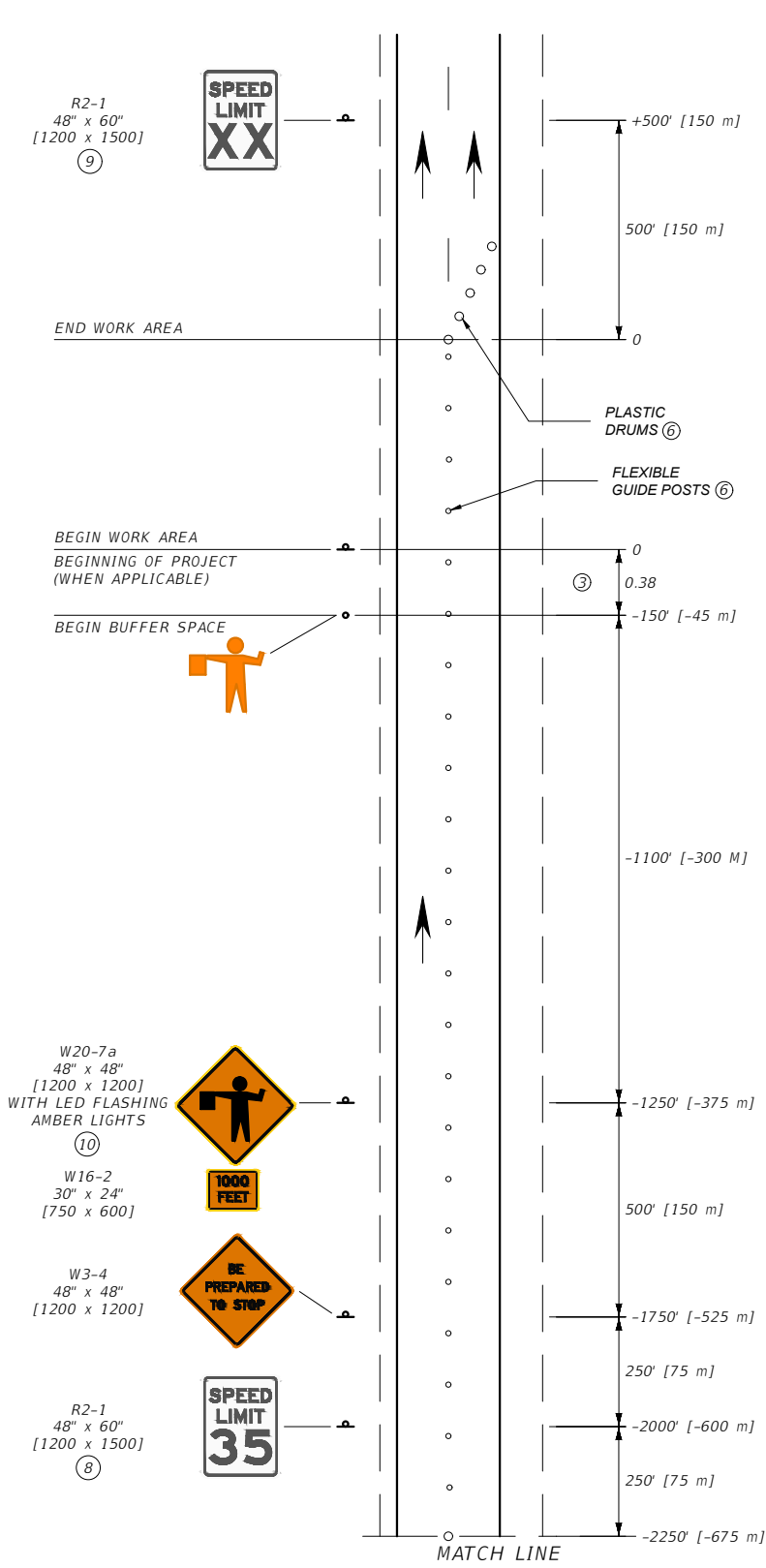
--REVISED--  
JUN 27, 2024

NOTE:

THIS SEQUENCE OF SIGNS IS IDENTICAL FOR BOTH WORK AREAS SHOWN ON THIS DETAIL.



WORK AREA WITH NO FLAGGER



WORK AREA WITH FLAGGER

NOTES:

- ① THESE SIGN LAYOUTS ALSO USED IN CONJUNCTION WITH THE PERMANENT LAYOUT ILLUSTRATED ON DTL DWG. 618-20 FOR WORK AREAS LOCATED AT THE BEGIN AND END OF THE WORK ZONES.
  - ② INCLUDE REGULATORY SIGNING ONLY IF THERE IS REASON TO RESTRICT SPEED WITHIN THE WORK ZONE. MODIFY REGULATORY SIGNS TO MATCH ADJACENT REGULATIONS.
  - ③ THE BUFFER SPACE MAY BE INCREASED FOR DOWNGRADES AND OTHER CONDITIONS THAT AFFECT STOPPING DISTANCE.
  - ④ XX = SPEED DETERMINED BY THE PROJECT MANAGER.
  - ⑤ PROVIDE A SECOND FLAGGER WHEN REQUIRED BY STANDARD SPECIFICATIONS, SECTION 618.
  - ⑥ SPACE FLEXIBLE GUIDE POSTS ON TANGENTS AT INTERVALS IN FEET [METERS] OF NO MORE THAN TWO [0.6] TIMES THE SPEED LIMIT IN M.P.H. SPACE PLASTIC DRUMS IN ALL TAPER SECTIONS AT INTERVALS IN FEET [METERS] OF NO MORE THAN ONE [0.3] TIMES THE SPEED LIMIT IN M.P.H. FOR SPEED LIMITS LESS THAN 35 M.P.H., SPACE CHANNELIZING DEVICES AS DIRECTED BY THE PROJECT MANAGER.
  - ⑦ WHEN PORTABLE SIGNS ARE USED, PLACE AS DIRECTED BY THE PROJECT MANAGER.
  - ⑧ IF FLAGGER IS MORE THAN ONE MILE [1.6 km] FROM THE LANE CLOSURE, INCLUDE W3-5 SIGNS, AS REQUIRED.
  - ⑨ POST THE SPEED LIMIT APPROPRIATE FOR ALL VEHICLES FOR THE REMAINDER OF THE WORK ZONE BEFORE RESUMING TO NORMAL POSTED SPEED LIMITS AT THE END OF THE WORK ZONE.
  - ⑩ AMBER LED FLASHERS MUST MEET STANDARD SPECIFICATION 715 AND DTL DWG. 618-01 REQUIREMENTS.
  - ⑪ POST THE W20-5 AFTER THE W20-1 OR G20-1 AND THE R2-15 IF THE MERGING TAPER OCCURS AT PROJECT BEGINNING.
- \* DENOTES SIGNS UNIQUE TO MONTANA.

UNITS SHOWN IN BRACKETS [ ] ARE METRIC AND ARE IN MILLIMETERS (mm) UNLESS OTHER UNITS ARE SHOWN.

DETAILED DRAWINGS	
REFERENCE STANDARD SPEC. SECTION 618, 715	DWG. NO. 618-24

**DIVIDED FOUR-LANE WORK AREAS**

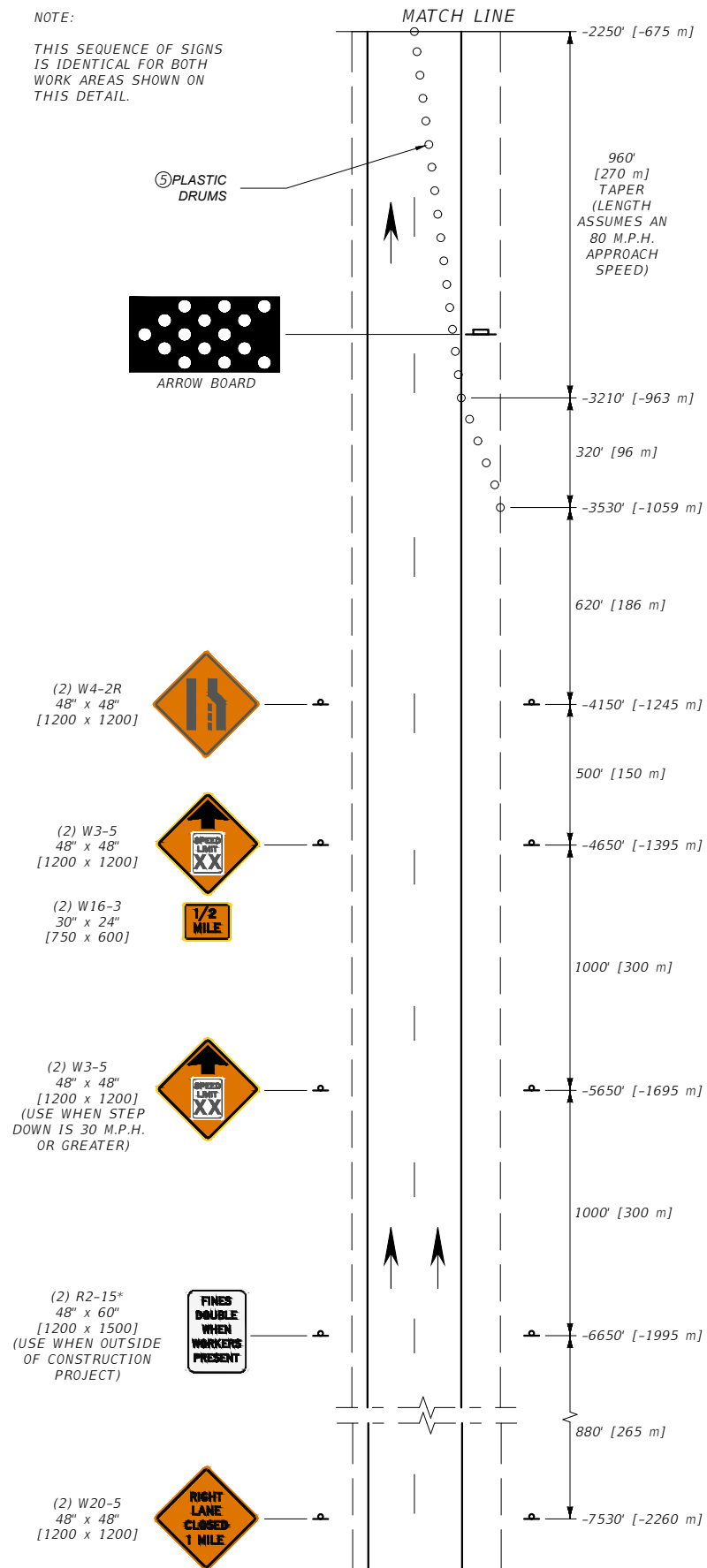
EFFECTIVE: JAN 23, 2020



--REVISED--  
JUN 27, 2024

NOTE:

THIS SEQUENCE OF SIGNS IS IDENTICAL FOR BOTH WORK AREAS SHOWN ON THIS DETAIL.



EXISTING NORMAL POSTED SPEED LIMIT(S)

OR  
R2-1  
48" x 60"  
[1200 x 1500]

(5) FLEXIBLE GUIDE POSTS SPACED AT HALF NORMAL SPACING

3 PLASTIC DRUMS

W23-2\*  
48" x 48"  
[1200 x 1200]

W16-2  
30" x 24"  
[750 x 600]

R2-1  
48" x 60"  
[1200 x 1500]

EQUIPMENT ENTRANCE WITH NO FLAGGER

EXISTING NORMAL POSTED SPEED LIMIT(S)

OR  
R2-1  
48" x 60"  
[1200 x 1500]

(5) FLEXIBLE GUIDE POSTS

3 PLASTIC DRUMS

W20-7a  
48" x 48"  
[1200 x 1200]  
WITH LED FLASHING AMBER LIGHTS

W16-2  
30" x 24"  
[750 x 600]

W3-4  
48" x 48"  
[1200 x 1200]

R2-1  
48" x 60"  
[1200 x 1500]

EQUIPMENT ENTRANCE WITH FLAGGER

NOTES:

- ① INCLUDE SPEED LIMIT SIGNING ONLY IF SPEED MUST BE RESTRICTED WITHIN THE WORK ZONE. REMOVE OR COVER REGULATORY SIGNS TO MATCH ADJACENT REGULATIONS.
  - ② THE BUFFER SPACE MAY BE INCREASED FOR DOWNGRADES AND OTHER CONDITIONS AFFECTING STOPPING DISTANCE.
  - ③ XX = SPEED DETERMINED BY THE PROJECT MANAGER.
  - ④ WHEN THIS OCCURS OUTSIDE A CONSTRUCTION PROJECT, INCLUDE THE W20-1 AND R2-15\* SIGNS.
  - ⑤ SPACE FLEXIBLE GUIDE POSTS ON TANGENTS AT INTERVALS IN FEET [METERS] OF NO MORE THAN TWO [0.6] TIMES THE SPEED LIMIT IN M.P.H. SPACE PLASTIC DRUMS IN ALL TAPER SECTIONS AT INTERVALS IN FEET [METERS] OF NO MORE THAN ONE [0.3] TIMES THE SPEED LIMIT IN M.P.H. FOR SPEED LIMITS LESS THAN 35 M.P.H., SPACE CHANNELIZING DEVICES AS DIRECTED BY THE PROJECT MANAGER.
  - ⑥ IF FLAGGER IS MORE THAN ONE MILE [1.6 km] FROM THE LANE CLOSURE, INCLUDE W3-5 SIGNS, AS REQUIRED.
  - ⑦ POST THE SPEED LIMIT APPROPRIATE FOR ALL VEHICLES FOR THE REMAINDER OF THE WORK ZONE BEFORE RESUMING TO NORMAL POSTED SPEED LIMITS AT THE END OF THE WORK ZONE.
  - ⑧ WHEN OUTSIDE OF A CONSTRUCTION PROJECT, POST THE SPEED LIMIT CONSISTING OF ONE LIMIT WHEN THE NORMAL POSTED SPEED LIMIT FOR ALL VEHICLES IS THE SAME. WHEN CAR AND TRUCK SPEED LIMITS DIFFER, POST BOTH LIMITS ON A SINGLE SIGN.
  - ⑨ AMBER LED FLASHERS MUST MEET STANDARD SPECIFICATION SECTION 715 AND DTL. DWG. 618-01.
  - ⑩ POST THE W20-5 AFTER THE W20-1 OR THE G20-1 AND THE R2-15 IF THE MERGING TAPER OCCURS AT PROJECT BEGINNING.
- \* DENOTES SIGNS UNIQUE TO MONTANA.

UNITS SHOWN IN BRACKETS [ ] ARE METRIC AND ARE IN MILLIMETERS (mm) UNLESS OTHER UNITS ARE SHOWN.

DETAILED DRAWINGS

REFERENCE STANDARD SPEC. SECTION 618, 715	DWG. NO. 618-27
---	-----------------

DIVIDED FOUR-LANE EQUIPMENT ENTRANCE

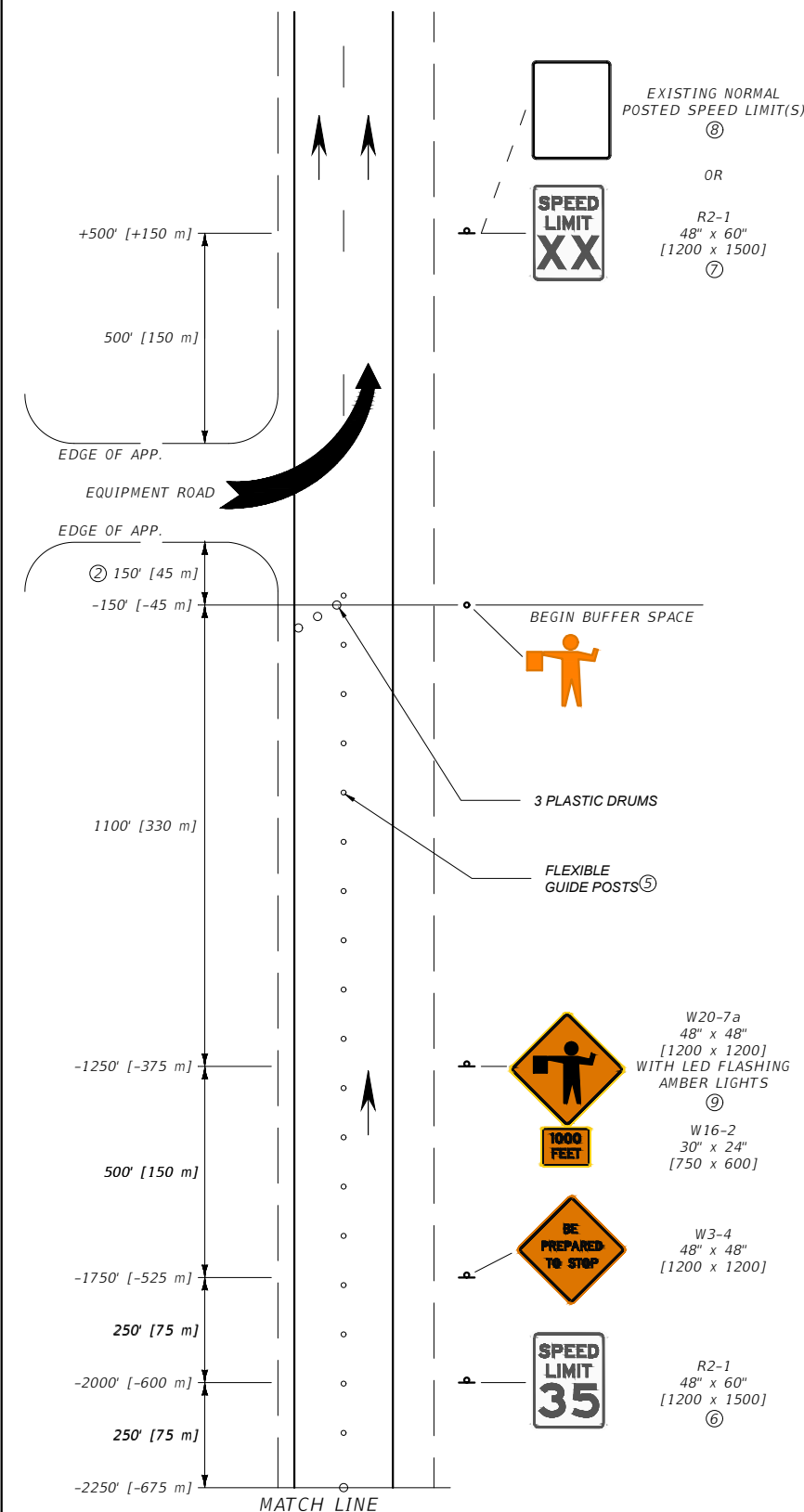
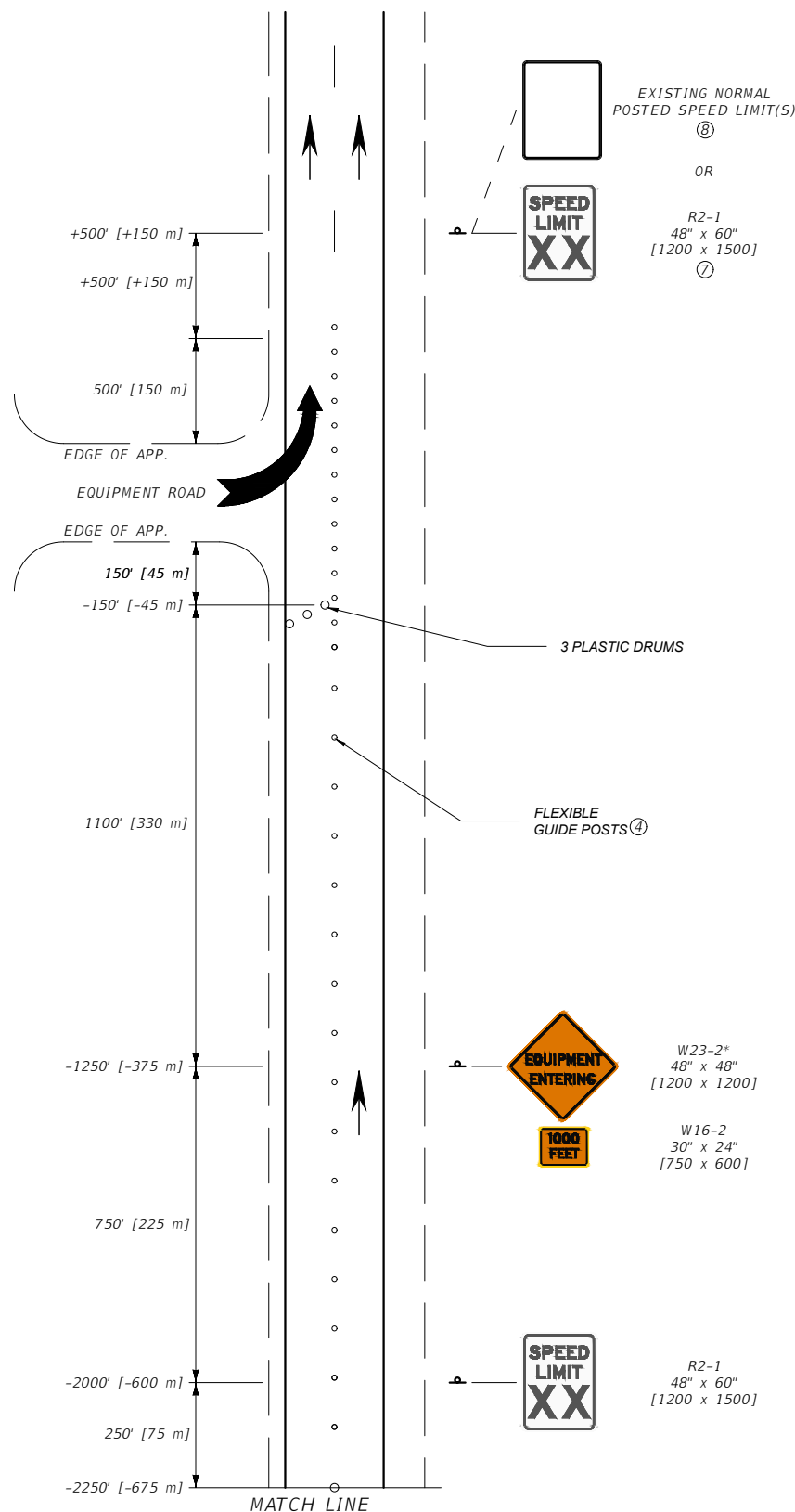
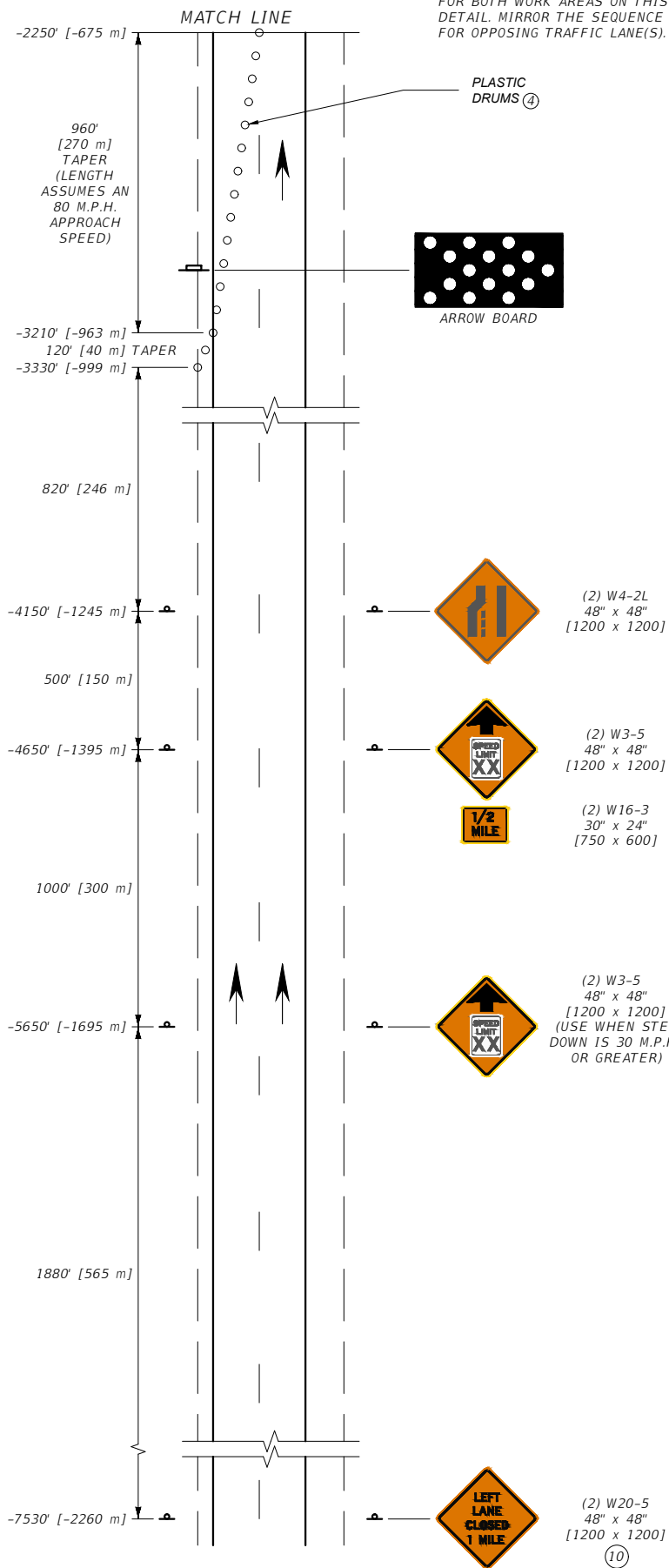
EFFECTIVE: JAN 23, 2020



--REVISED--  
JUN 27, 2024

NOTE:

THIS SIGN SEQUENCE IS IDENTICAL FOR BOTH WORK AREAS ON THIS DETAIL. MIRROR THE SEQUENCE FOR OPPOSING TRAFFIC LANE(S).



- NOTES:
- INCLUDE SPEED LIMIT SIGNING ONLY IF SPEED MUST BE RESTRICTED WITHIN THE WORK ZONE. REMOVE OR COVER REGULATORY SIGNS TO MATCH ADJACENT REGULATIONS.
  - THE BUFFER SPACE MAY BE INCREASED FOR DOWNGRADES AND OTHER CONDITIONS AFFECTING STOPPING DISTANCE.
  - XX = SPEED DETERMINED BY PROJECT MANAGER.
  - WHEN TAPER SECTIONS OCCUR OUTSIDE OF A CONSTRUCTION PROJECT, INCLUDE THE W20-1 AND R2-15\* SIGNS.
  - SPACE FLEXIBLE GUIDE POSTS ON TANGENTS AT INTERVALS IN FEET [METERS] OF NO MORE THAN TWO [0.6] TIMES THE SPEED LIMIT IN M.P.H. SPACE PLASTIC DRUMS IN ALL TAPER SECTIONS AT INTERVALS IN FEET [METERS] OF NO MORE THAN ONE [0.3] TIMES THE SPEED LIMIT IN M.P.H. FOR SPEED LIMITS LESS THAN 35 M.P.H., SPACE CHANNELIZING DEVICES AS DIRECTED BY THE PROJECT MANAGER.
  - IF FLAGGER IS MORE THAN ONE MILE [1.6 km] FROM THE LANE CLOSURE, INCLUDE W3-5 SIGNS, AS REQUIRED.
  - POST THE SPEED LIMIT APPROPRIATE FOR ALL VEHICLES FOR THE REMAINDER OF THE WORK ZONE BEFORE RESUMING TO NORMALSTED POSTED SPEED LIMITS AT THE END OF WORK ZONE.
  - WHEN OUTSIDE OF A CONSTRUCTION PROJECT, POST THE SPEED LIMIT CONSISTING OF ONE LIMIT WHEN THE NORMAL POSTED SPEED LIMIT FOR ALL VEHICLES IS THE SAME. WHEN CAR AND TRUCK SPEED LIMITS DIFFER, POST BOTH LIMITS ON A SINGLE SIGN.
  - AMBER LED FLASHERS MUST MEET STANDARD SPECIFICATION SECTION 715 AND DTL. DWG. 618-01 REQUIREMENTS.
  - POST THE W20-5 AFTER THE W20-1 OR G20-1 AND THE R2-15 IF THE MERGING TAPER OCCURS AT PROJECT BEGINNING.
- \* DENOTES SIGNS UNIQUE TO MONTANA.

UNITS SHOWN IN BRACKETS [ ] ARE METRIC AND ARE IN MILLIMETERS (mm) UNLESS OTHER UNITS ARE SHOWN.

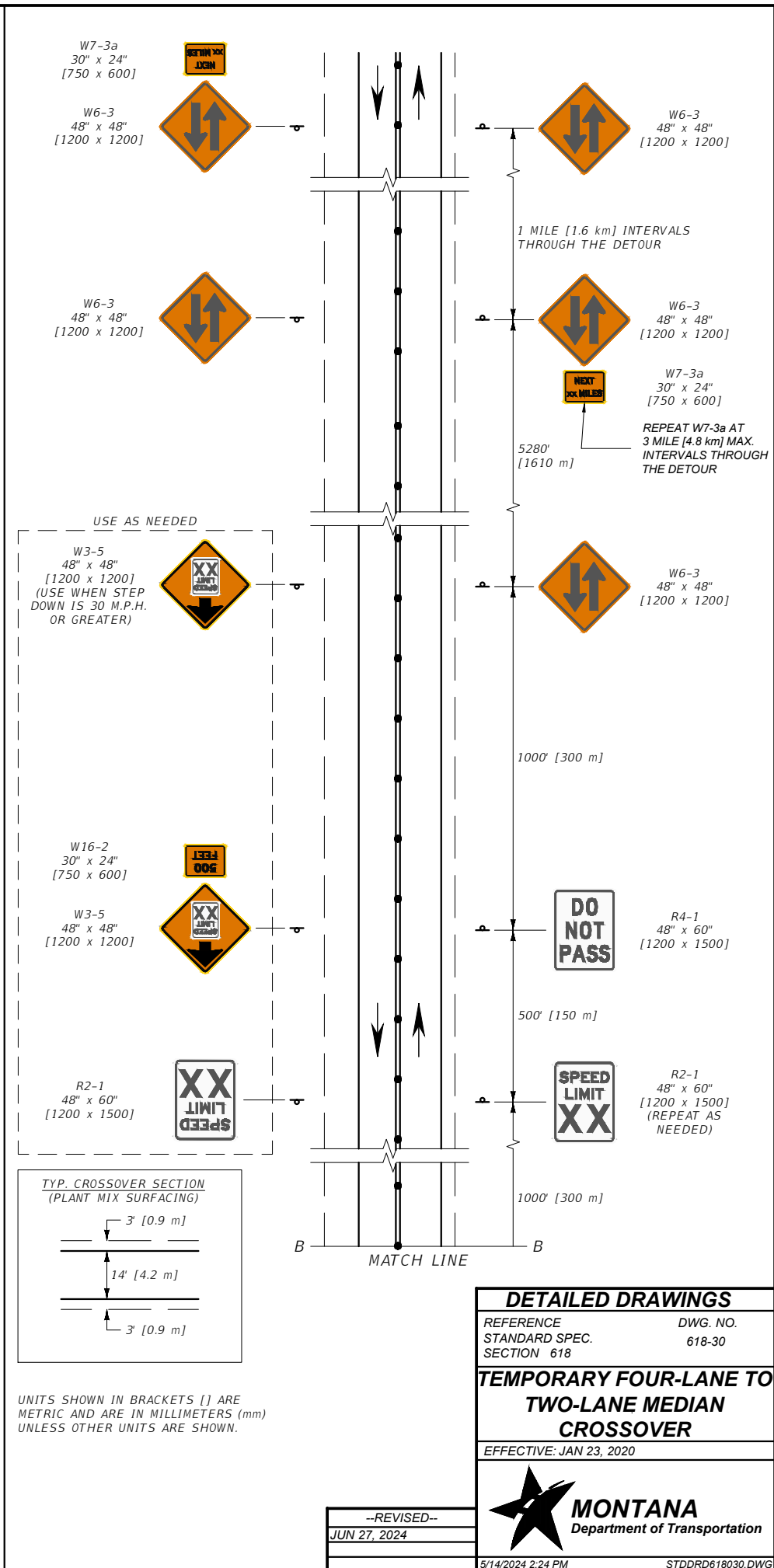
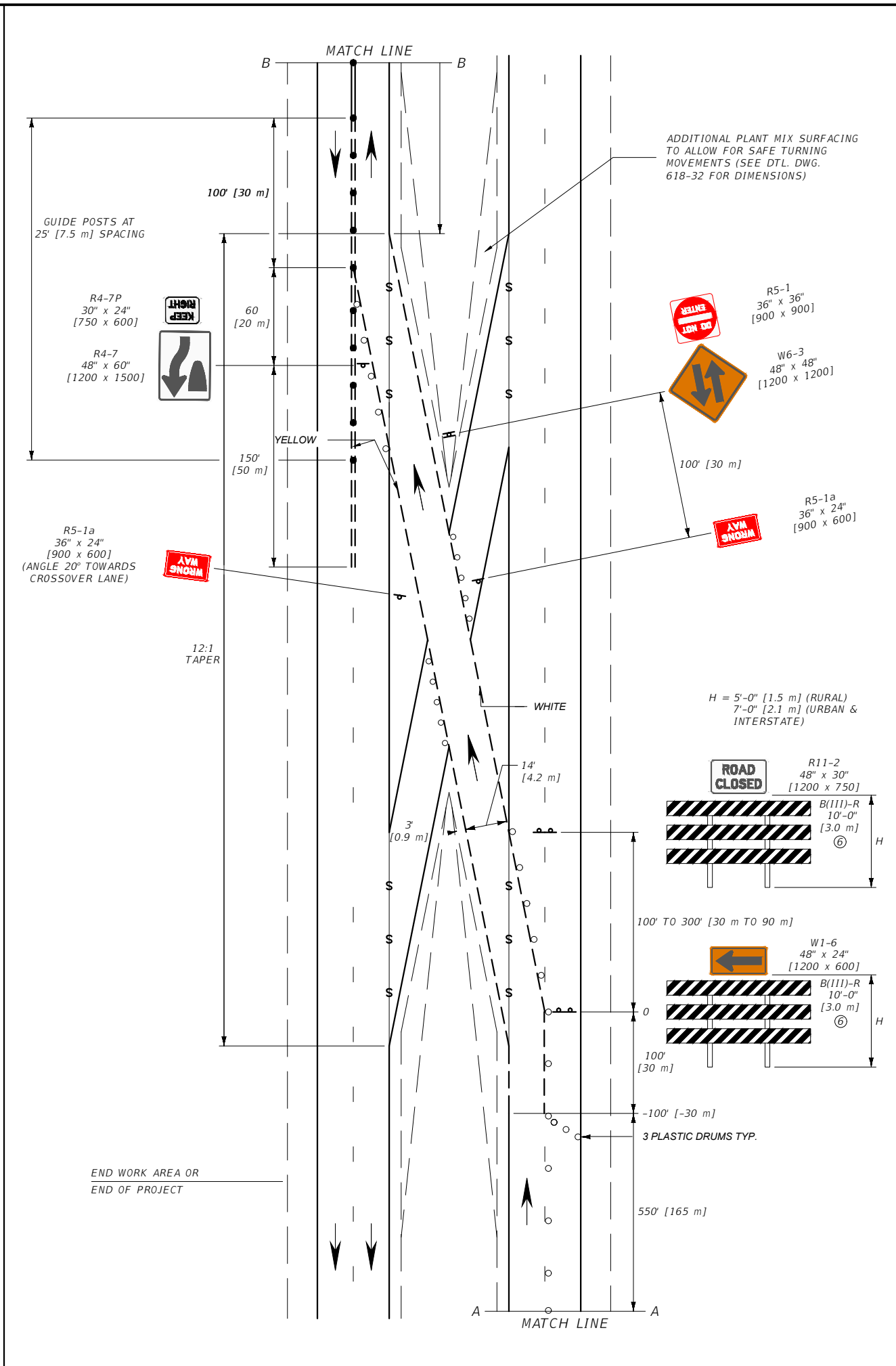
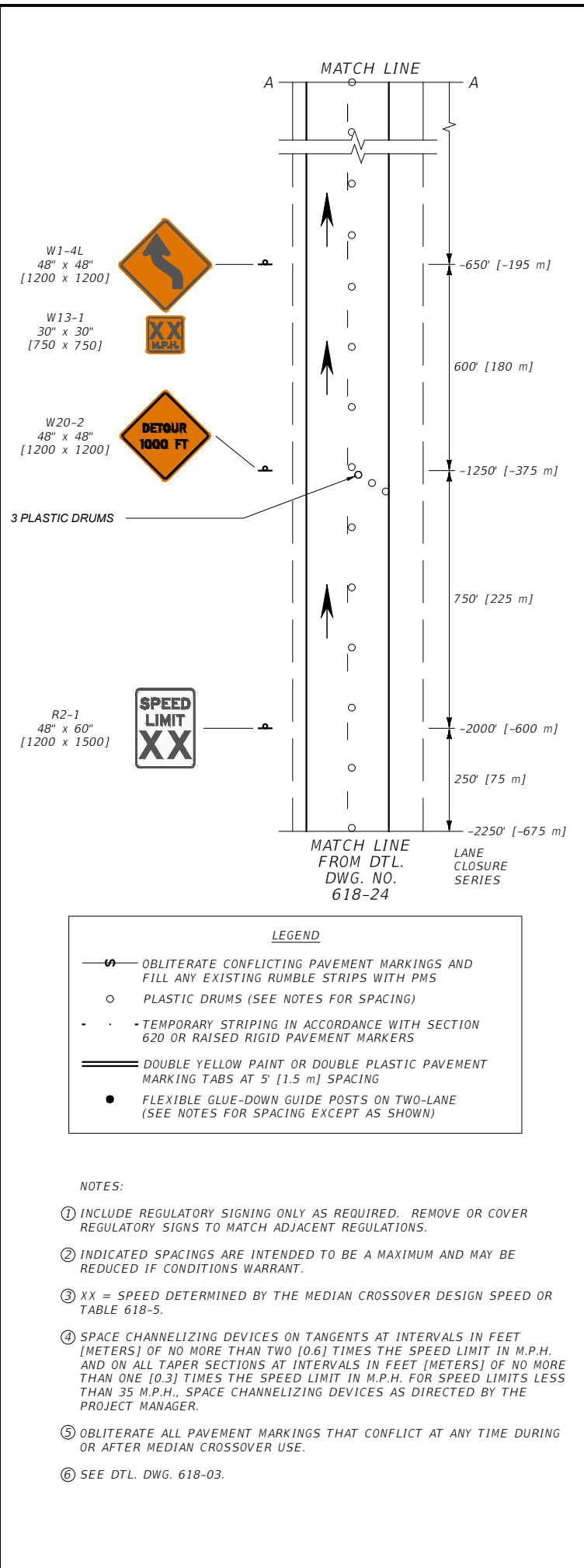
DETAILED DRAWINGS	
REFERENCE STANDARD SPEC. SECTION 618, 715	DWG. NO. 618-28

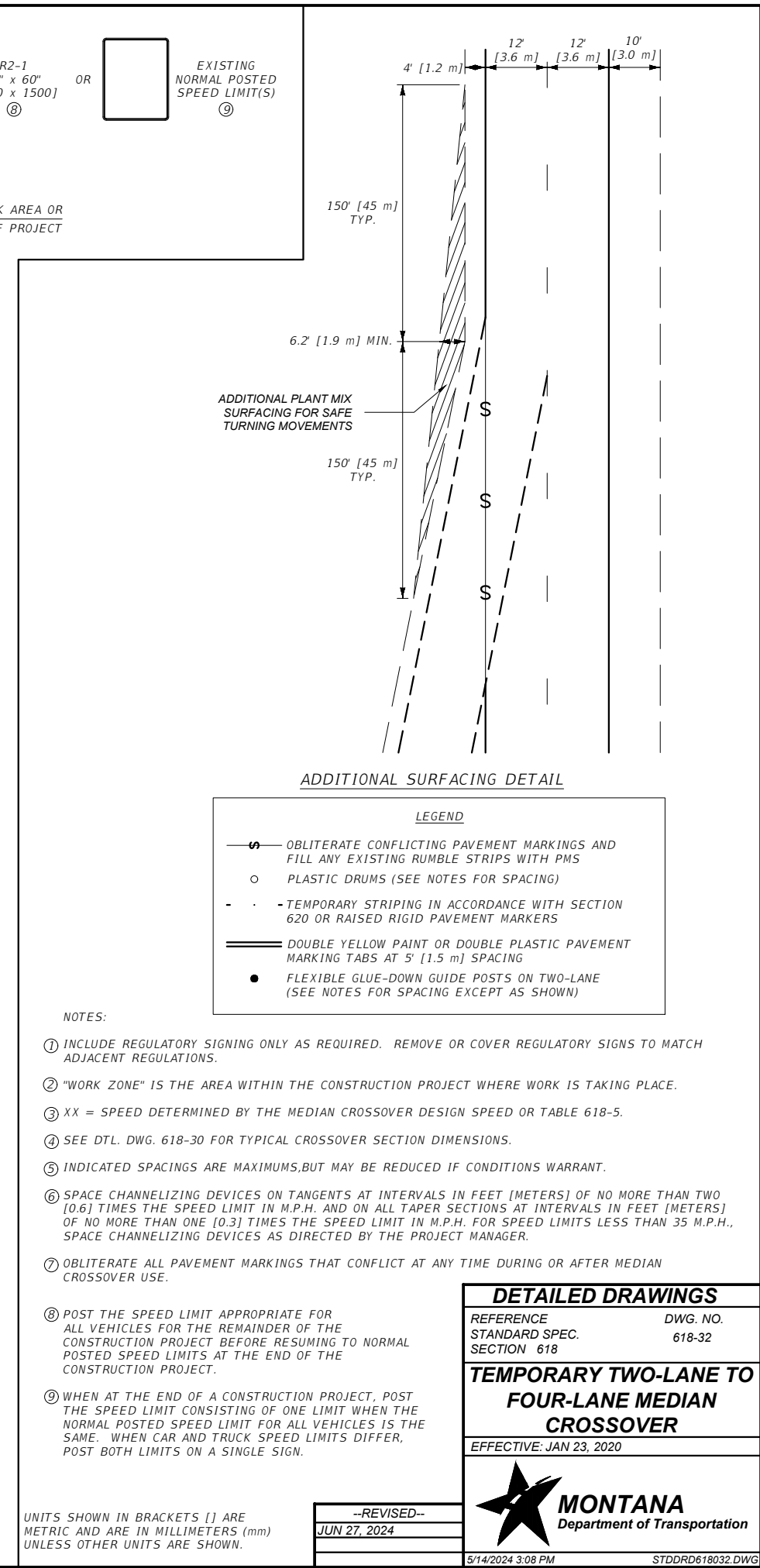
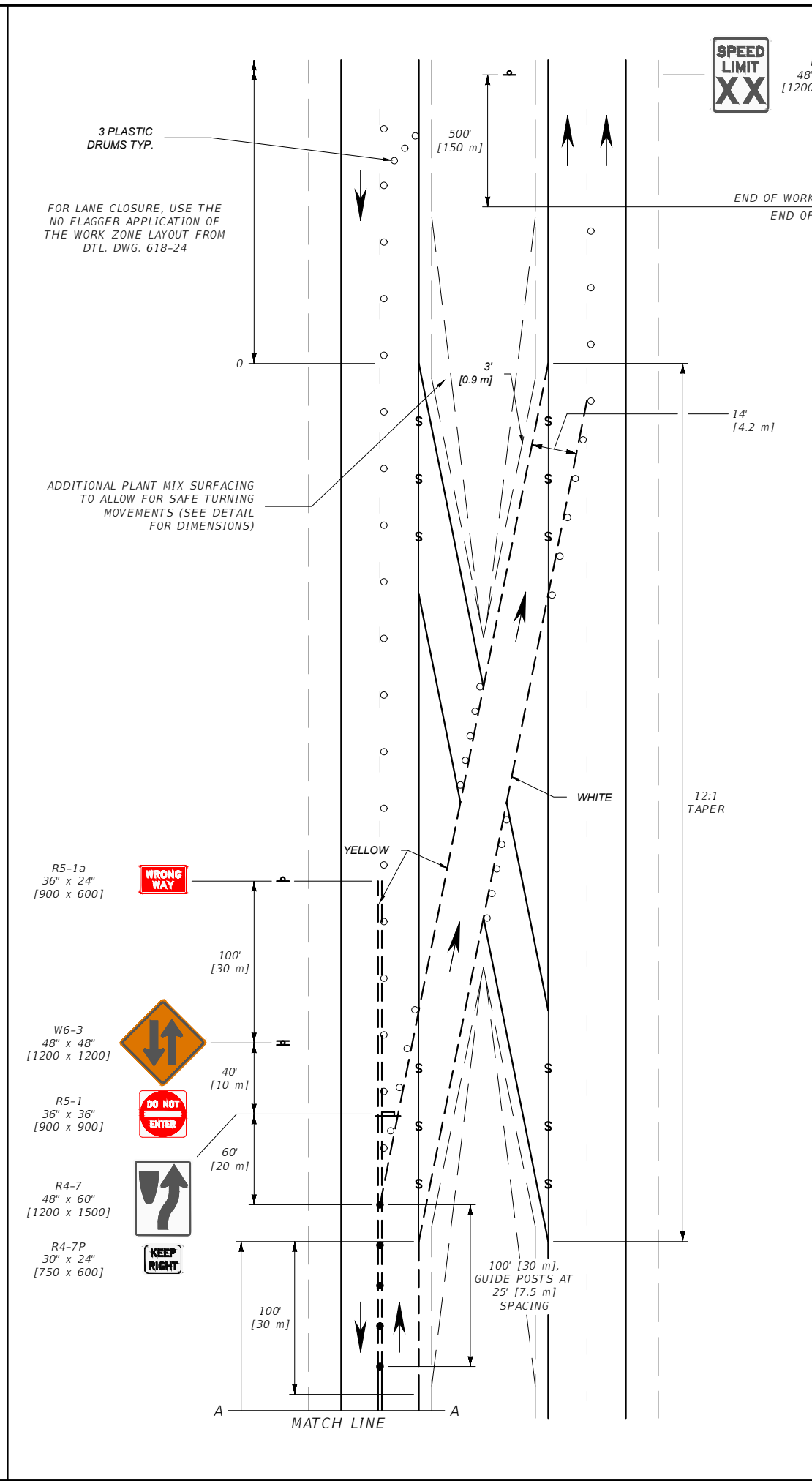
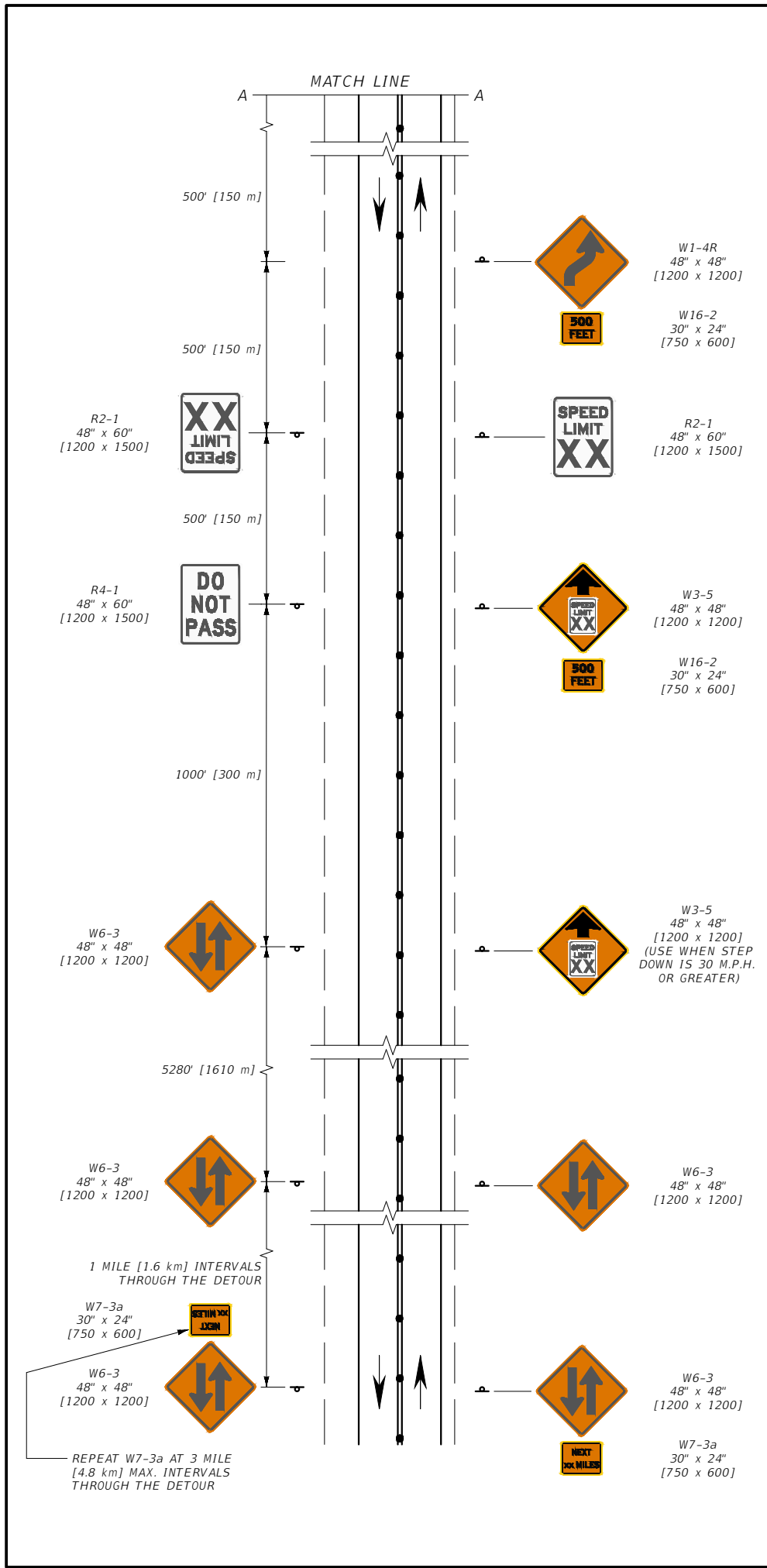
**DIVIDED FOUR-LANE MEDIAN CROSSING**

EFFECTIVE: JAN 23, 2020



--REVISED--  
JUN 27, 2024





**DETAILED DRAWINGS**

REFERENCE STANDARD SPEC. SECTION 618	DWG. NO. 618-32
--------------------------------------	-----------------

**TEMPORARY TWO-LANE TO FOUR-LANE MEDIAN CROSSOVER**

EFFECTIVE: JAN 23, 2020

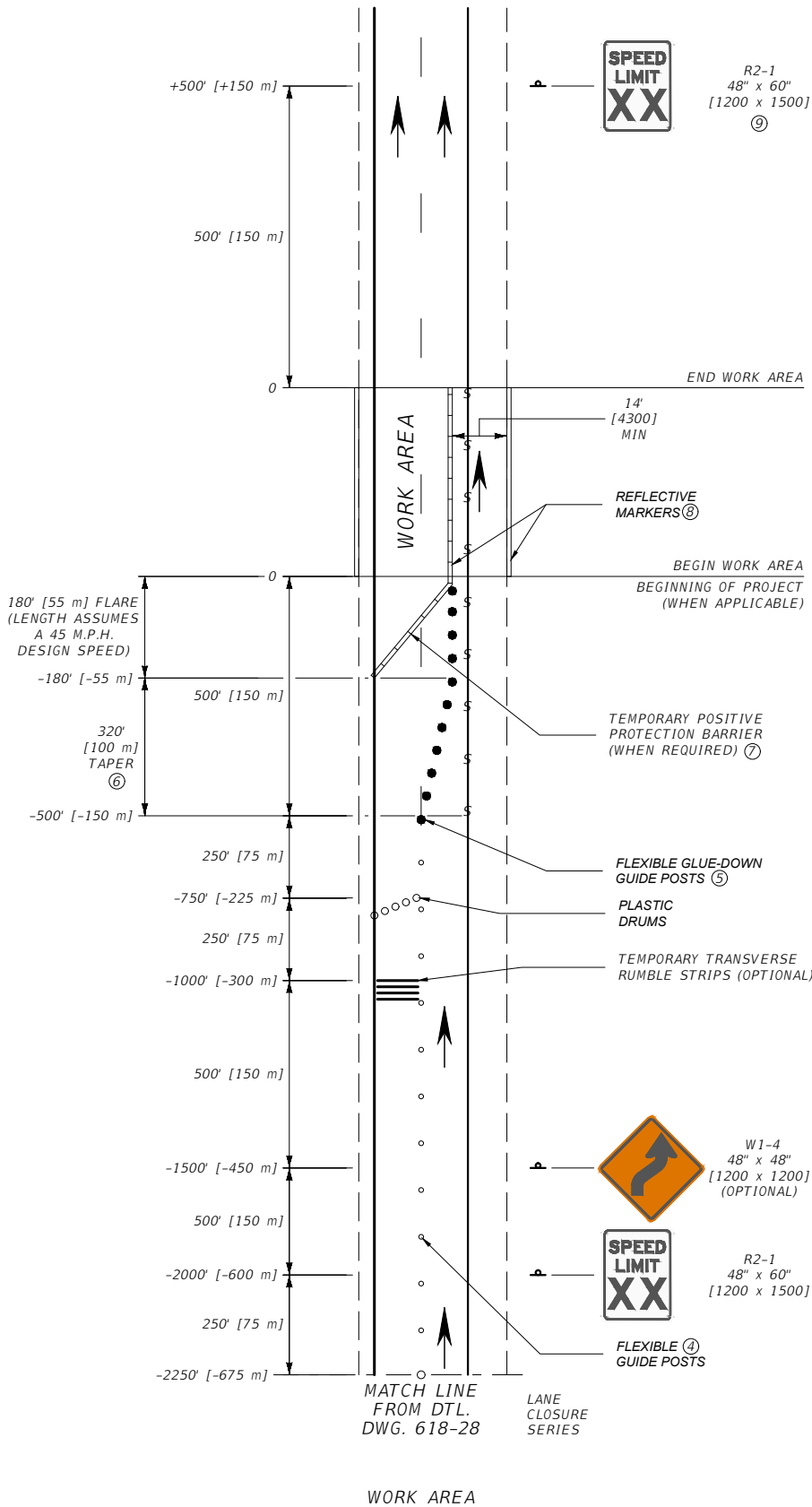
MONTANA Department of Transportation



NOTES:

- ① USE THESE SIGN LAYOUTS WITH THE LAYOUT ILLUSTRATED ON DTL. DWG. 618-28.
- ② INCLUDE REGULATORY SIGNING ONLY AS REQUIRED. REMOVE OR COVER REGULATORY SIGNS TO MATCH ADJACENT REGULATIONS.
- ③ XX = SPEED DETERMINED BY THE PROJECT MANAGER.
- ④ SPACE CHANNELIZING DEVICES ON TANGENTS AT INTERVALS IN FEET [METERS] OF NO MORE THAN TWO [0.6] TIMES THE SPEED LIMIT IN M.P.H. AND ON ALL TAPER SECTIONS AT INTERVALS IN FEET [METERS] OF NO MORE THAN ONE [0.3] TIMES THE SPEED LIMIT IN M.P.H. FOR SPEED LIMITS LESS THAN 35 M.P.H., SPACE CHANNELIZING DEVICES AS DIRECTED BY THE PROJECT MANAGER.
- ⑤ SPACE FLEXIBLE GLUE-DOWN GUIDE POSTS USED FOR LANE SHIFT TAPER AT INTERVALS IN FEET [METERS] OF M.P.H.
- ⑥ THE LANE SHIFT TAPER LENGTH ASSUMES AN 8' [2400] LANE SHIFT OFFSET AND AN 80 M.P.H. APPROACH SPEED. CONTACT THE PROJECT MANAGER IF CONDITIONS VARY.
- ⑦ TEMPORARY POSITIVE PROTECTION BARRIER CAN TERMINATE AT THE CENTER OF THE CLOSED LANE FOR ACCESS PURPOSES IF AN APPROVED TEMPORARY IMPACT ATTENUATOR IS USED.
- ⑧ PLACE REFLECTIVE MARKERS ALONG THE TOP OF TEMPORARY BARRIER AND ENSURE EXISTING BARRIER REFLECTORS ARE INTACT.
- ⑨ POST THE SPEED LIMIT APPROPRIATE FOR ALL VEHICLES FOR THE REMAINDER OF THE WORK ZONE BEFORE RESUMING TO NORMAL POSTED SPEED LIMITS AT THE END OF THE WORK ZONE.
- ⑩ OBLITERATE CONFLICTING PAVEMENT MARKINGS BEGINNING AT THE SHIFTING TAPER AND CONTINUING THROUGH THE WORK AREA.

\* DENOTES SIGNS UNIQUE TO MONTANA.



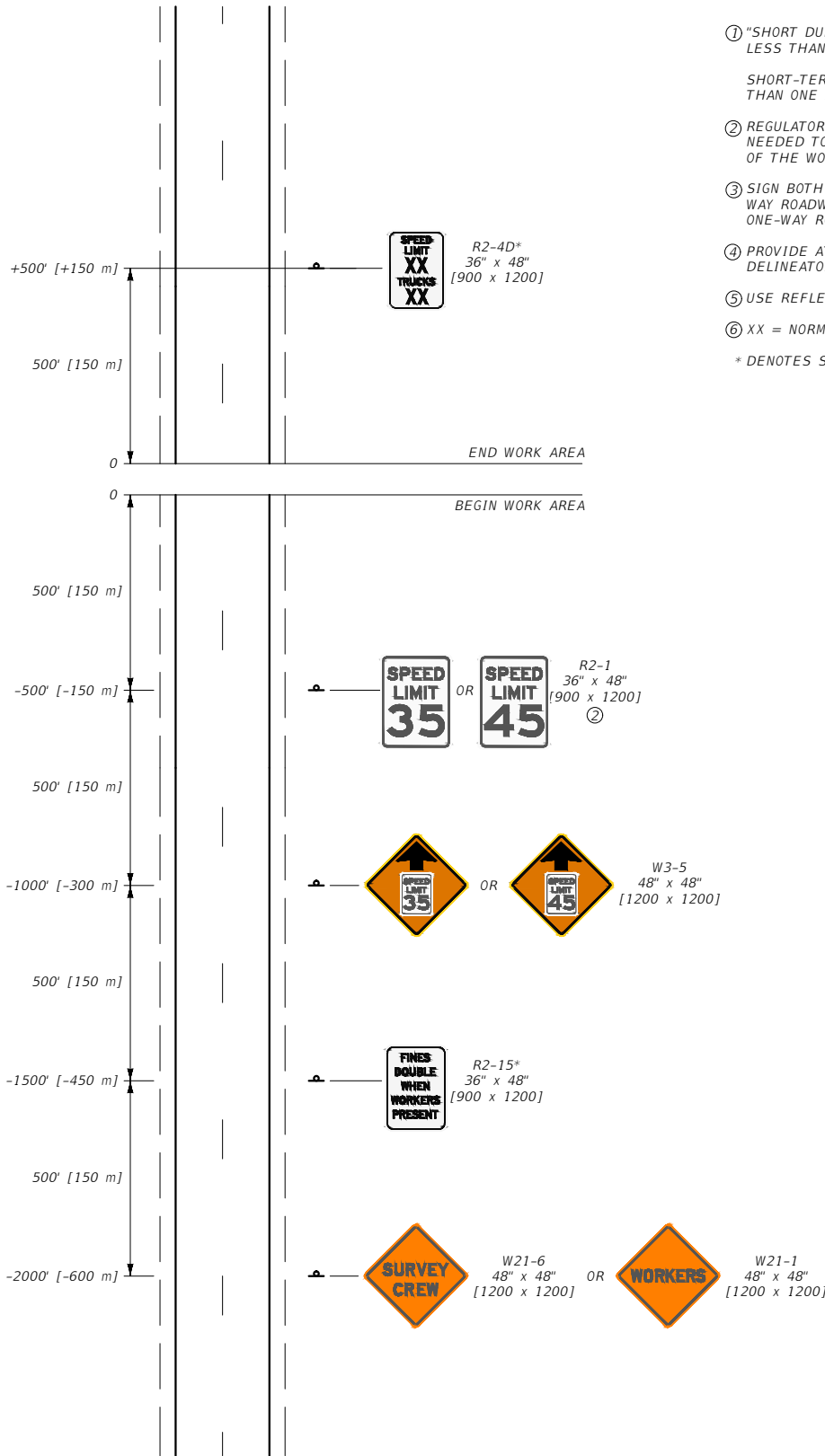
LEGEND	
	OBLITERATE CONFLICTING PAVEMENT MARKINGS ⑩
	PLASTIC DRUMS (SEE NOTES FOR SPACING)
	FLEXIBLE GLUE-DOWN GUIDE POSTS (SEE NOTES FOR SPACING)
	FLEXIBLE GUIDE POSTS

UNITS SHOWN IN BRACKETS [ ] ARE METRIC AND ARE IN MILLIMETERS (mm) UNLESS OTHER UNITS ARE SHOWN.

DETAILED DRAWINGS	
REFERENCE STANDARD SPEC. SECTION 618	DWG. NO. 618-33
<b>DIVIDED FOUR-LANE SINGLE LANE CLOSURE LANE SHIFT</b>	
EFFECTIVE: JAN 23, 2020	

--REVISED--  
JUN 27, 2024





NOTES:

- ① "SHORT DURATION ACTIVITIES" ARE THOSE LASTING LESS THAN AN HOUR.  
SHORT-TERM ACTIVITIES ARE THOSE LASTING LONGER THAN ONE HOUR BUT ENDING WITHIN A FULL SHIFT.
  - ② REGULATORY SPEED SIGNS MUST MOVE AS NEEDED TO REMAIN WITHIN 500 FEET [150 m] OF THE WORK AREA.
  - ③ SIGN BOTH TRAVEL DIRECTIONS ON TWO-LANE, TWO-WAY ROADWAYS OR BOTH SHOULDERS ON TWO-LANE, ONE-WAY ROADWAYS.
  - ④ PROVIDE AT LEAST THE DISTANCE SHOWN FOR DELINEATOR MOUNTED SIGNS.
  - ⑤ USE REFLECTIVE DEVICES.
  - ⑥ XX = NORMAL POSTED SPEED LIMIT(S).
- \* DENOTES SIGNS UNIQUE TO MONTANA.

UNITS SHOWN IN BRACKETS [ ] ARE METRIC AND ARE IN MILLIMETERS (mm) UNLESS OTHER UNITS ARE SHOWN.

DETAILED DRAWINGS	
REFERENCE STANDARD SPEC. SECTION 618	DWG. NO. 618-34
SHORT DURATION OR SHORT-TERM STATIONARY CREW SIGNING	
EFFECTIVE: JAN 23, 2020	

--REVISED--  
JUN 27, 2024

**MONTANA**  
Department of Transportation