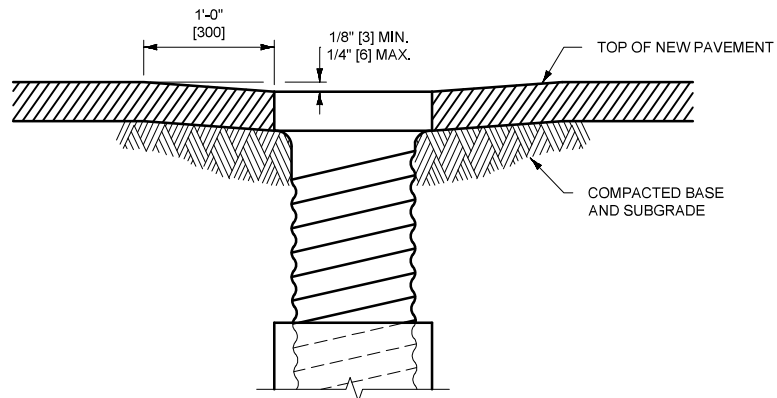


NOTES:

- ① RAISE MANHOLE LID FRAME ASSEMBLY TO NEEDED ELEVATION USING VERTICAL ADJUSTMENT RINGS.
- ② LOWER MANHOLE BY REPLACING CONE AND BARREL SECTION LENGTHS WITH SHORTER LENGTHS AS NEEDED.
- ③ SLOPE MANHOLE FRAME TO MATCH FINISHED SURFACING CROSS SLOPE.
- ④ MAKE FINAL MANHOLE ADJUSTMENTS BEFORE PAVING.

MANHOLE ADJUSTMENT DETAIL



NOTES:

- ① ADJUST WATER VALVES UPWARD OR DOWNWARD AS REQUIRED.
- ② MAKE FINAL ADJUSTMENT BEFORE PAVING.

VALVE BOX ADJUSTMENT DETAIL

UNITS SHOWN IN BRACKETS [ ] ARE METRIC AND ARE IN MILLIMETERS (mm) UNLESS OTHER UNITS ARE SHOWN.

**DETAILED DRAWINGS**

REFERENCE	DWG. NO.
STANDARD SPEC.	621-00
SECTION 604, 621	

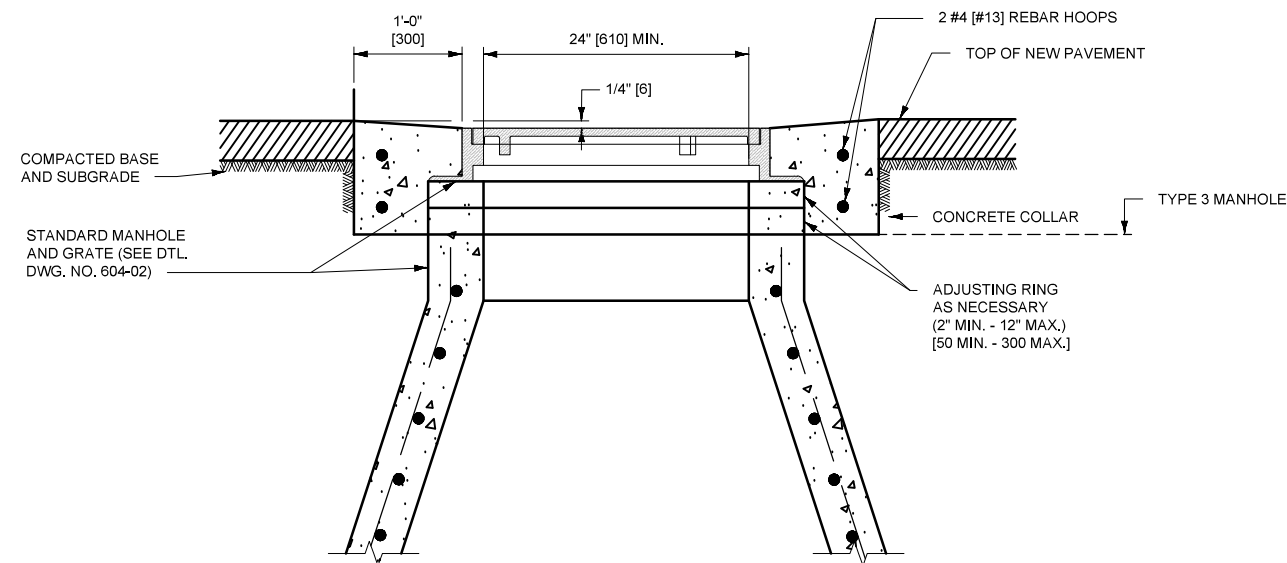
**MANHOLE AND VALVE BOX ADJUSTMENT DETAILS**

EFFECTIVE: JAN 23, 2024

--REVISED--

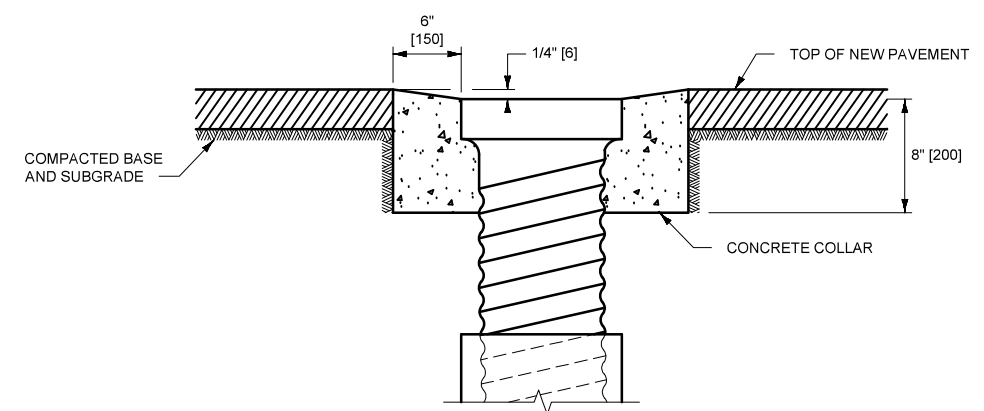
APR 28, 2022  
JUN 27, 2024





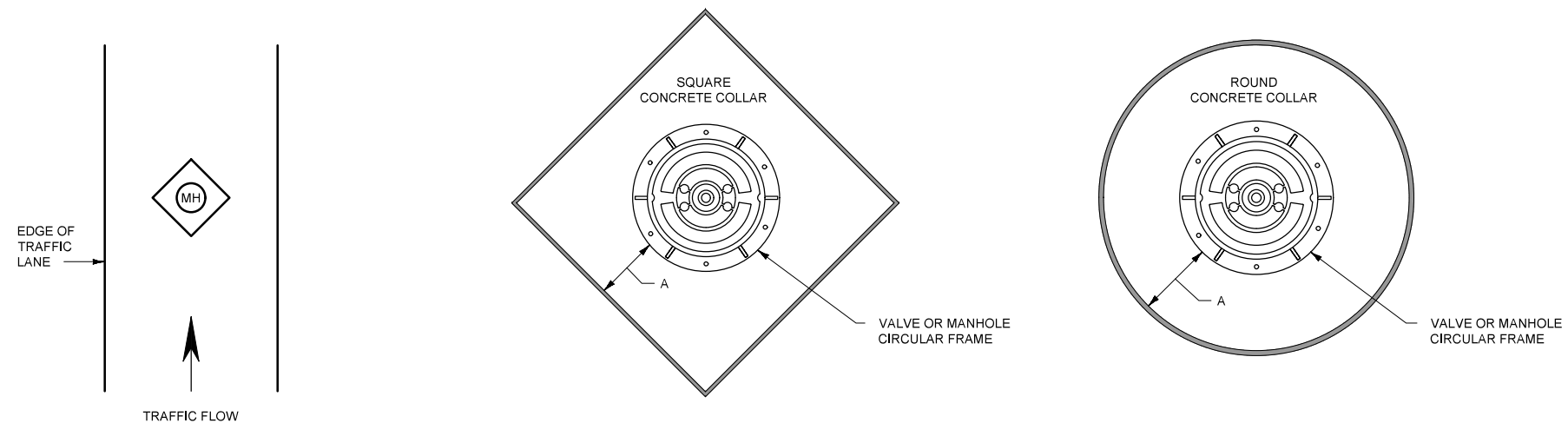
- NOTES:
- ① RAISE MANHOLE LID FRAME ASSEMBLY TO NEEDED ELEVATION USING VERTICAL ADJUSTMENT RINGS.
  - ② LOWER MANHOLE BY REPLACING CONE AND BARREL SECTION LENGTHS WITH SHORTER LENGTHS AS NEEDED.
  - ③ SLOPE MANHOLE FRAME TO MATCH FINISHED SURFACING CROSS SLOPE.
  - ④ CONSTRUCT CONCRETE COLLAR USING CLASS GENERAL CONCRETE OR APPROVED EQUAL.

MANHOLE ADJUSTMENT DETAIL



- NOTES:
- ① ADJUST WATER VALVES UPWARD OR DOWNWARD AS REQUIRED.
  - ② CONSTRUCT CONCRETE COLLAR OF CLASS GENERAL CONCRETE OR APPROVED EQUAL.

VALVE BOX ADJUSTMENT DETAIL



TYPE	DIMENSIONS	SQUARE COLLAR QUANTITIES	ROUND COLLAR QUANTITIES
		CLASS GENERAL CONCRETE	CLASS GENERAL CONCRETE
MANHOLE	1'-0" [300]	0.5 C.Y. [0.4m <sup>3</sup> ]	0.4 C.Y. [0.3m <sup>3</sup> ]
VALVE	0'-6" [150]	0.2 C.Y. [0.2 m <sup>3</sup> ]	0.1 C.Y. [0.1 m <sup>3</sup> ]

CONCRETE COLLAR DETAIL

UNITS SHOWN IN BRACKETS [ ] ARE METRIC AND ARE IN MILLIMETERS (mm) UNLESS OTHER UNITS ARE SHOWN.

**DETAILED DRAWINGS**

REFERENCE	DWG. NO.
STANDARD SPEC.	621-05
SECTION 604, 621	

**OPTIONAL MANHOLE AND VALVE BOX ADJUSTMENT DETAILS**

EFFECTIVE: JAN 23, 2020

--REVISED--  
APR 28, 2022  
JUN 27, 2024

**MONTANA**  
Department of Transportation