

R2-1  
48" x 60"  
[1200 x 1500]  
②



G20-2  
48" x 24"  
[1200 x 600]



END OF PROJECT

BEGINNING OF PROJECT

+500' [+150 m]  
250' [75 m]  
+250' [+75 m]  
250' [75 m]  
0

1250' [375 m]

-1250' [-375 m]  
500' [150 m]  
-1750' [-525 m]  
250' [75 m]  
-2000' [-600 m]

2150' [645 m]

-4150' [-1245 m]  
500' [150 m]  
-4650' [-1395 m]

1000' [300 m]

-5650' [-1695 m]

1880' [565 m]

-7530' [-2260 m]

500' [150 m]  
-8030' [-2410 m]

500' [150 m]

-8530' [-2560 m]

NOTES:

- ① THIS SIGN LAYOUT IS INTENDED TO BE A PERMANENT INSTALLATION FOR THE DURATION OF THE CONSTRUCTION PROJECT, AS APPROVED BY THE PROJECT MANAGER. COVER OR REMOVE SIGNS WHEN NOT IN USE, INCLUDING UNWARRANTED SPEED LIMIT SIGNS. REMOVE ANY SIGN SUPPORTS IF THEY WILL NOT BE NEEDED WITHIN 90 DAYS.
- ② POST THE END OF WORK ZONE SPEED LIMIT CONSISTING OF ONE LIMIT WHEN THE NORMAL POSTED SPEED LIMIT FOR ALL VEHICLES IS THE SAME. WHEN CAR AND TRUCK SPEED LIMITS DIFFER, POST BOTH LIMITS ON A SINGLE SIGN.
- ③ INCLUDE REGULATORY SIGNING ONLY IF A WORK ZONE OR ROADWAY HAS CONDITIONS THAT WARRANT SPEED RESTRICTIONS. MODIFY REGULATORY SIGNS TO MATCH ADJACENT REGULATIONS.
- ④ SET UP THIS SIGN LAYOUT IN EACH TRAFFIC DIRECTION.
- ⑤ IN ADDITION TO THE SIGNS SHOWN, INCLUDE THE APPROPRIATE FOUR-LANE WORK ZONE SIGNS (DTL. DWG. 618-24) WHEN A WORK AREA FALLS AT THE BEGIN OR END OF THE WORK ZONE.
- ⑥ DIVIDED FOUR-LANE IS SHOWN. FOR UN-DIVIDED FOUR-LANE, PLACE SIGNS ON RIGHT SIDE ONLY.

\* DENOTES SIGNS UNIQUE TO MONTANA.

FOUR-LANE WORK  
AREA SIGN LAYOUT  
(WHEN APPLICABLE,  
SEE DTL. DWG. 618-24)

⑥

(2) R2-15\*  
48" x 60"  
[1200 x 1500]



(2) G20-1  
60" x 36"  
[1500 x 900]



MILEAGE TO THE  
NEAREST MILE  
OR

(2) W20-1  
48" x 48"  
[1200 x 1200]  
(USE WHEN  
LESS THAN  
2 MILES [3.2 km])



UNITS SHOWN IN BRACKETS [ ] ARE  
METRIC AND ARE IN MILLIMETERS (mm)  
UNLESS OTHER UNITS ARE SHOWN.

## DETAILED DRAWINGS

REFERENCE	DWG. NO.
STANDARD SPEC.	618-20
SECTION 618	

## DIVIDED FOUR-LANE WORK ZONE

EFFECTIVE: JAN 23, 2020

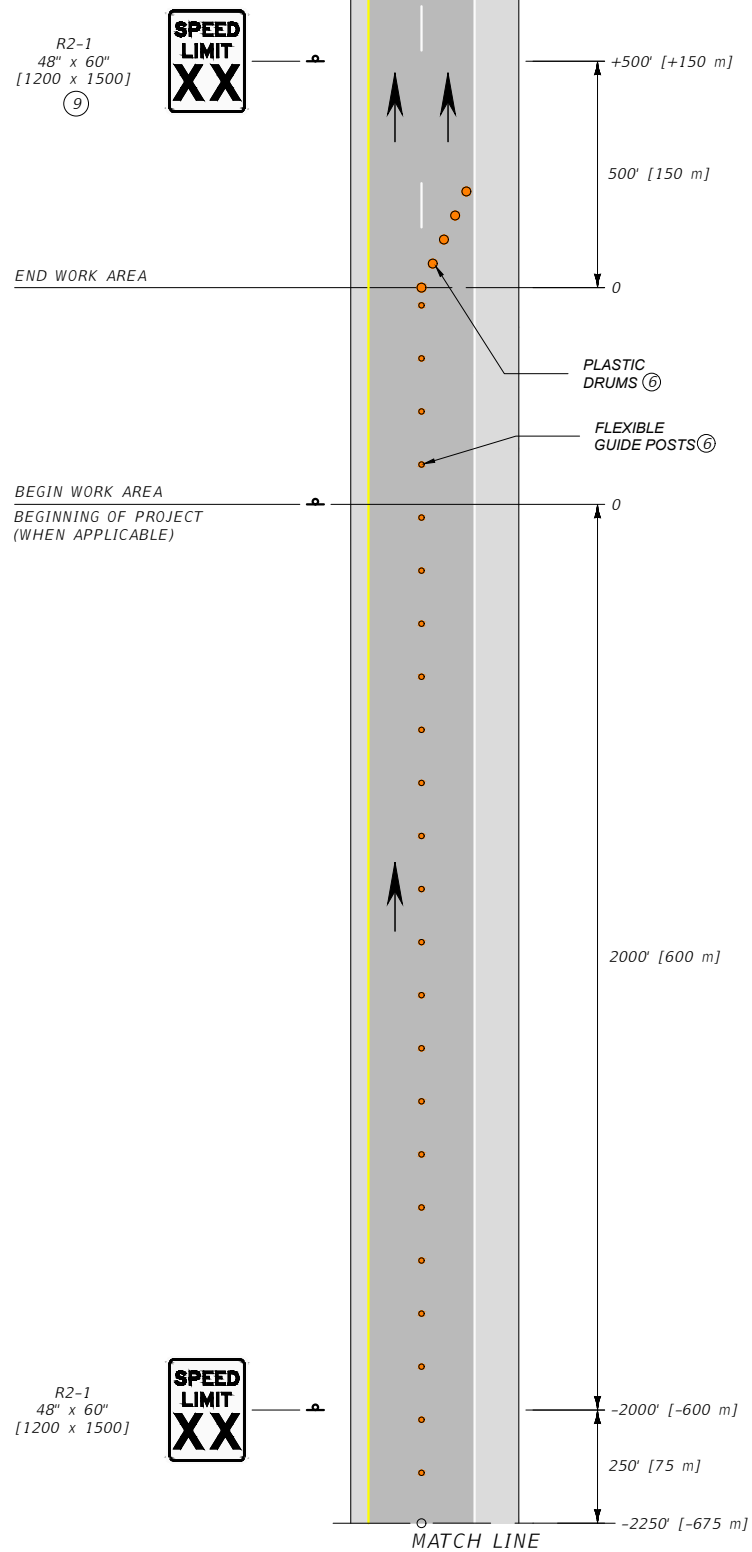
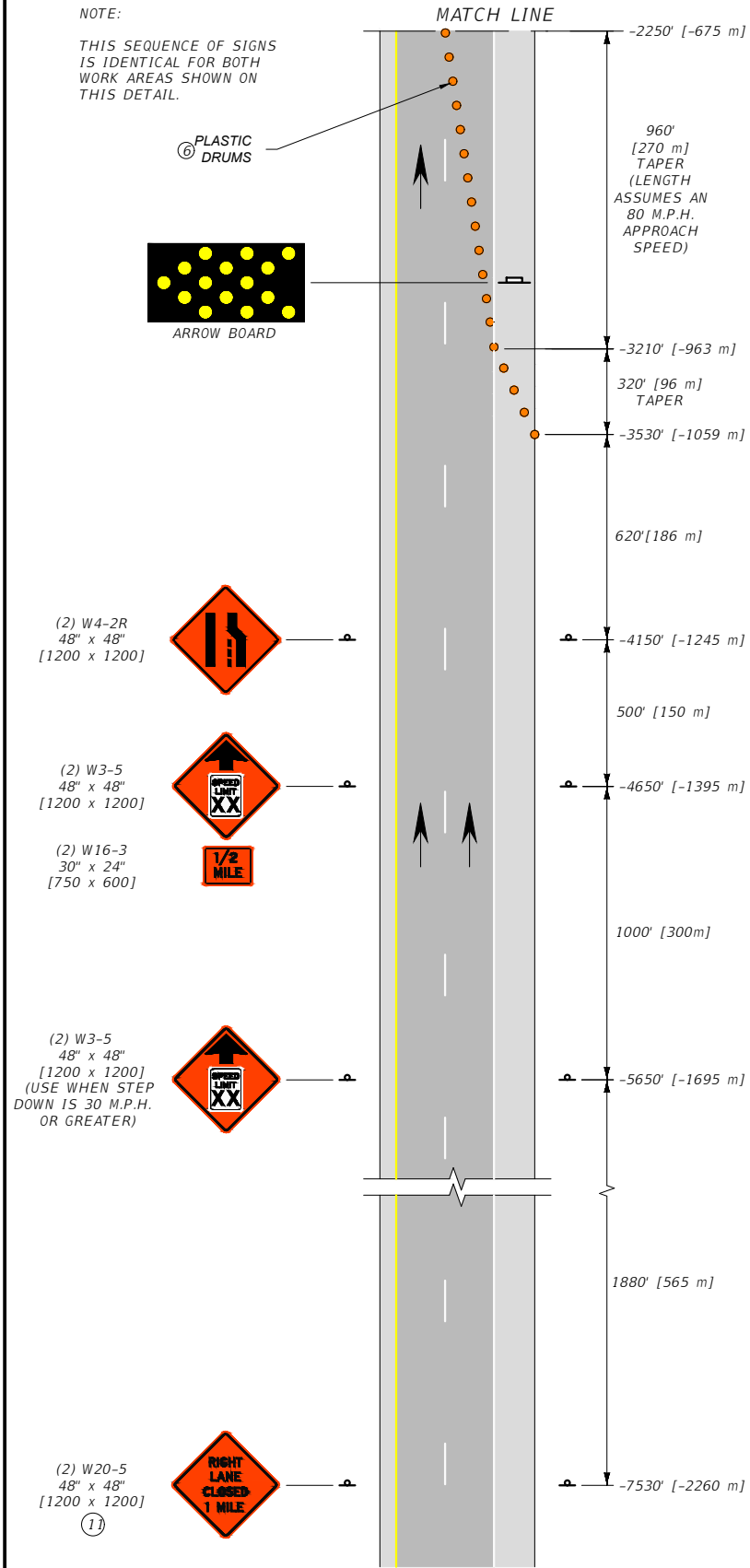


**MONTANA**  
Department of Transportation

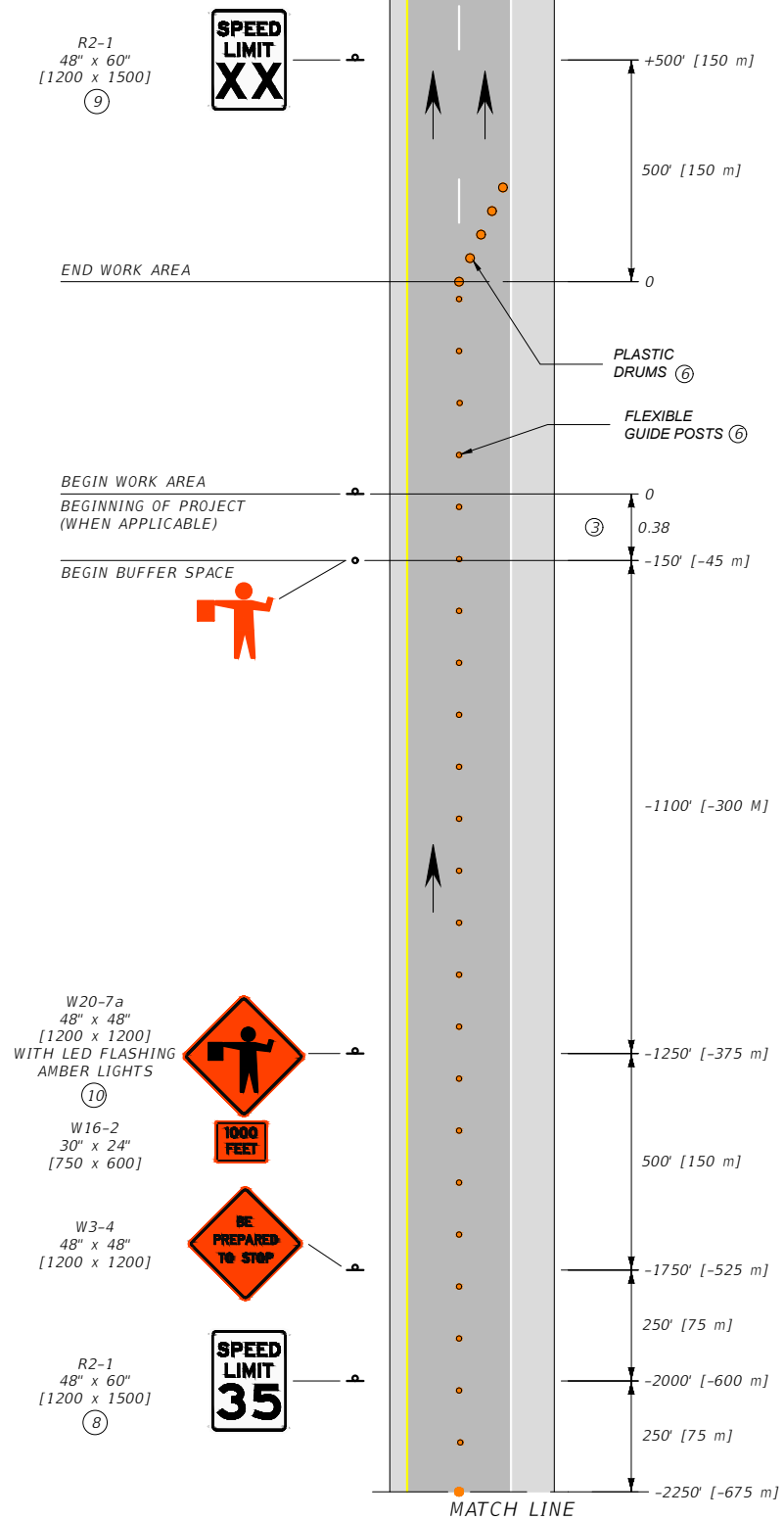
--REVISED--  
JUN 27, 2024

5/19/2025 1:33 PM

STDDRD618020.DWG



WORK AREA WITH NO FLAGGER



WORK AREA WITH FLAGGER

- NOTES:
- ① THESE SIGN LAYOUTS MAY BE USED WITH THE PERMANENT LAYOUT ILLUSTRATED ON DTL. DWG. 618-20 FOR WORK AREAS LOCATED AT THE BEGIN AND END OF THE WORK ZONES.
  - ② INCLUDE REGULATORY SIGNING ONLY IF THERE IS REASON TO RESTRICT SPEED WITHIN THE WORK ZONE. MODIFY REGULATORY SIGNS TO MATCH ADJACENT REGULATIONS.
  - ③ THE BUFFER SPACE MAY BE INCREASED FOR DOWNGRADES AND OTHER CONDITIONS THAT AFFECT STOPPING DISTANCE.
  - ④ XX = SPEED DETERMINED BY THE PROJECT MANAGER.
  - ⑤ PROVIDE A SECOND FLAGGER WHEN REQUIRED BY STANDARD SPECIFICATIONS, SECTION 618.
  - ⑥ SPACE FLEXIBLE GUIDE POSTS ON TANGENTS AT INTERVALS IN FEET [METERS] OF NO MORE THAN TWO [0.6] TIMES THE SPEED LIMIT IN M.P.H. SPACE PLASTIC DRUMS IN ALL TAPER SECTIONS AT INTERVALS IN FEET [METERS] OF NO MORE THAN ONE [0.3] TIMES THE SPEED LIMIT IN M.P.H. FOR SPEED LIMITS LESS THAN 35 M.P.H., SPACE CHANNELIZING DEVICES AS DIRECTED BY THE PROJECT MANAGER.
  - ⑦ WHEN PORTABLE SIGNS ARE USED, PLACE AS DIRECTED BY THE PROJECT MANAGER.
  - ⑧ IF FLAGGER IS MORE THAN ONE MILE [1.6 km] FROM THE LANE CLOSURE, INCLUDE W3-5 SIGNS, AS REQUIRED.
  - ⑨ POST THE SPEED LIMIT APPROPRIATE FOR ALL VEHICLES FOR THE REMAINDER OF THE WORK ZONE BEFORE RESUMING TO NORMAL POSTED SPEED LIMITS AT THE END OF THE WORK ZONE.
  - ⑩ AMBER LED FLASHERS MUST MEET STANDARD SPECIFICATION 715 AND DTL. DWG. 618-01 REQUIREMENTS.
  - ⑪ POST THE W20-5 AFTER THE W20-1 OR G20-1 AND THE R2-15 IF THE MERGING TAPER OCCURS AT PROJECT BEGINNING.
- \* DENOTES SIGNS UNIQUE TO MONTANA.

UNITS SHOWN IN BRACKETS [ ] ARE METRIC AND ARE IN MILLIMETERS (mm) UNLESS OTHER UNITS ARE SHOWN.

**DETAILED DRAWINGS**

REFERENCE	DWG. NO.
STANDARD SPEC.	618-21
SECTION 618, 715	

**DIVIDED FOUR-LANE WORK AREAS**

EFFECTIVE: JAN 23, 2020



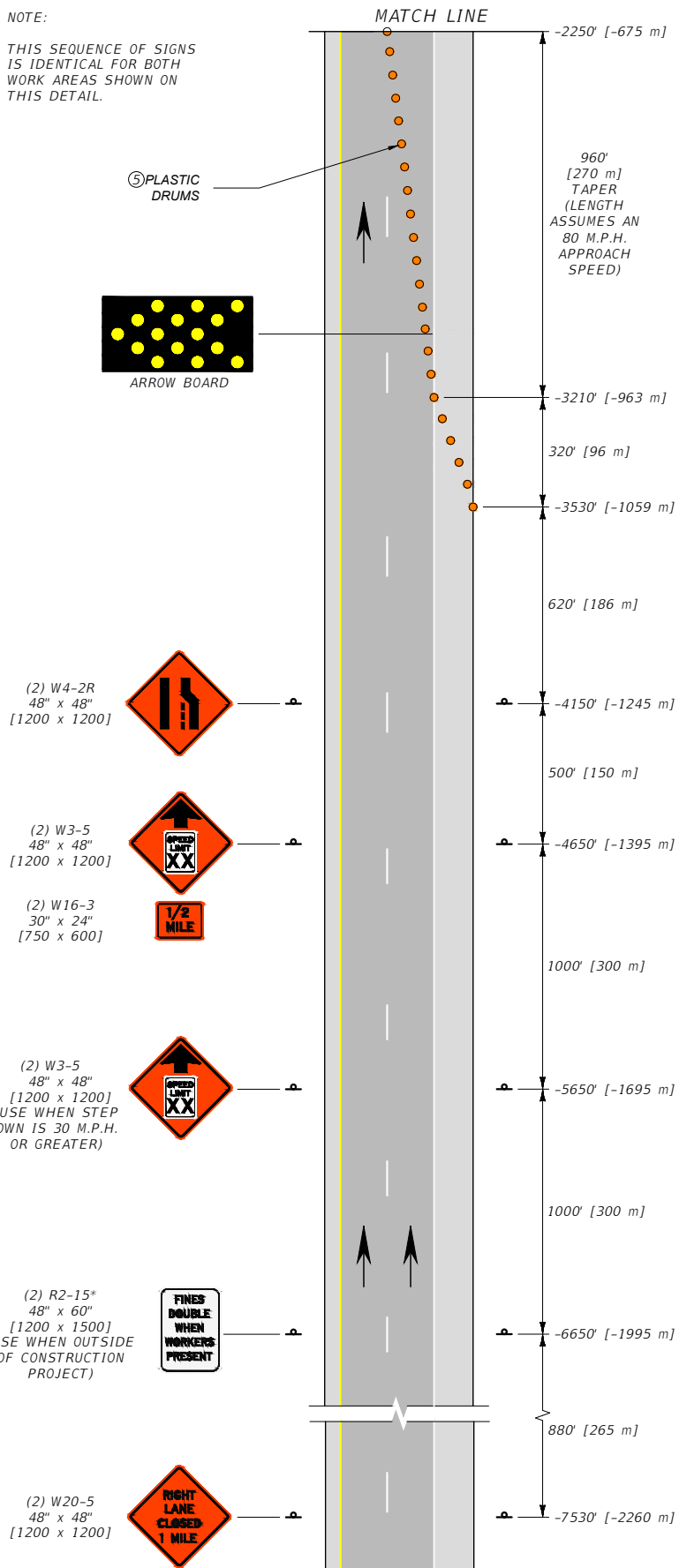
--REVISED--  
JUN 27, 2024  
JUN 26, 2025

5/19/2025 1:37 PM

STDDRD618021.DWG

NOTE:

THIS SEQUENCE OF SIGNS  
IS IDENTICAL FOR BOTH  
WORK AREAS SHOWN ON  
THIS DETAIL.



EXISTING NORMAL  
POSTED SPEED  
LIMIT(S)

⑧

OR

R2-1  
48" x 60"  
[1200 x 1500]  
⑦



⑤ FLEXIBLE GUIDE  
POSTS SPACED  
AT HALF NORMAL  
SPACING

3 PLASTIC DRUMS

⑤ FLEXIBLE  
GUIDE POSTS

W23-2\*  
48" x 48"  
[1200 x 1200]



W16-2  
30" x 24"  
[750 x 600]



R2-1  
48" x 60"  
[1200 x 1500]



EQUIPMENT ENTRANCE WITH NO FLAGGER

NOTES:

① INCLUDE SPEED LIMIT SIGNING  
ONLY IF SPEED MUST BE RESTRICTED  
WITHIN THE WORK ZONE. REMOVE OR  
COVER REGULATORY SIGNS TO MATCH  
ADJACENT REGULATIONS.

② THE BUFFER SPACE MAY BE  
INCREASED FOR DOWNGRADES  
AND OTHER CONDITIONS AFFECTING  
STOPPING DISTANCE.

③ XX = SPEED DETERMINED BY  
THE PROJECT MANAGER.

④ WHEN THIS OCCURS OUTSIDE  
A CONSTRUCTION PROJECT,  
INCLUDE THE W20-1 AND  
R2-15\* SIGNS.

⑤ SPACE FLEXIBLE GUIDE POSTS ON  
TANGENTS AT INTERVALS IN  
FEET [METERS] OF NO MORE THAN  
TWO [0.6] TIMES THE SPEED LIMIT IN  
M.P.H. SPACE PLASTIC DRUMS IN  
ALL TAPER SECTIONS AT INTERVALS  
IN FEET [METERS] OF NO MORE THAN  
ONE [0.3] TIMES THE SPEED LIMIT IN  
M.P.H. FOR SPEED LIMITS LESS THAN  
35 M.P.H., SPACE CHANNELIZING  
DEVICES AS DIRECTED BY THE  
PROJECT MANAGER.

⑥ IF FLAGGER IS MORE THAN ONE  
MILE [1.6 km] FROM THE LANE  
CLOSURE, INCLUDE W3-5  
SIGNS, AS REQUIRED.

⑦ POST THE SPEED LIMIT APPROPRIATE  
FOR ALL VEHICLES FOR THE  
REMAINDER OF THE WORK ZONE  
BEFORE RESUMING TO NORMAL  
POSTED SPEED LIMITS AT THE END  
OF THE WORK ZONE.

⑧ WHEN OUTSIDE OF A CONSTRUCTION  
PROJECT, POST THE SPEED LIMIT  
CONSISTING OF ONE LIMIT WHEN  
THE NORMAL POSTED SPEED LIMIT  
FOR ALL VEHICLES IS THE SAME.  
WHEN CAR AND TRUCK SPEED LIMITS  
DIFFER, POST BOTH LIMITS ON A  
SINGLE SIGN.

⑨ AMBER LED FLASHERS MUST MEET  
STANDARD SPECIFICATION SECTION 715  
AND DTL. DWG. 618-01.

⑩ POST THE W20-5 AFTER THE W20-1  
OR THE G20-1 AND THE R2-15  
IF THE MERGING TAPER OCCURS AT  
PROJECT BEGINNING.

\* DENOTES SIGNS UNIQUE TO MONTANA.

UNITS SHOWN IN BRACKETS [ ] ARE  
METRIC AND ARE IN MILLIMETERS (mm)  
UNLESS OTHER UNITS ARE SHOWN.

## DETAILED DRAWINGS

REFERENCE  
STANDARD SPEC.  
SECTION 618, 715

DWG. NO.  
618-22

## DIVIDED FOUR-LANE EQUIPMENT ENTRANCE

EFFECTIVE: JAN 23, 2020

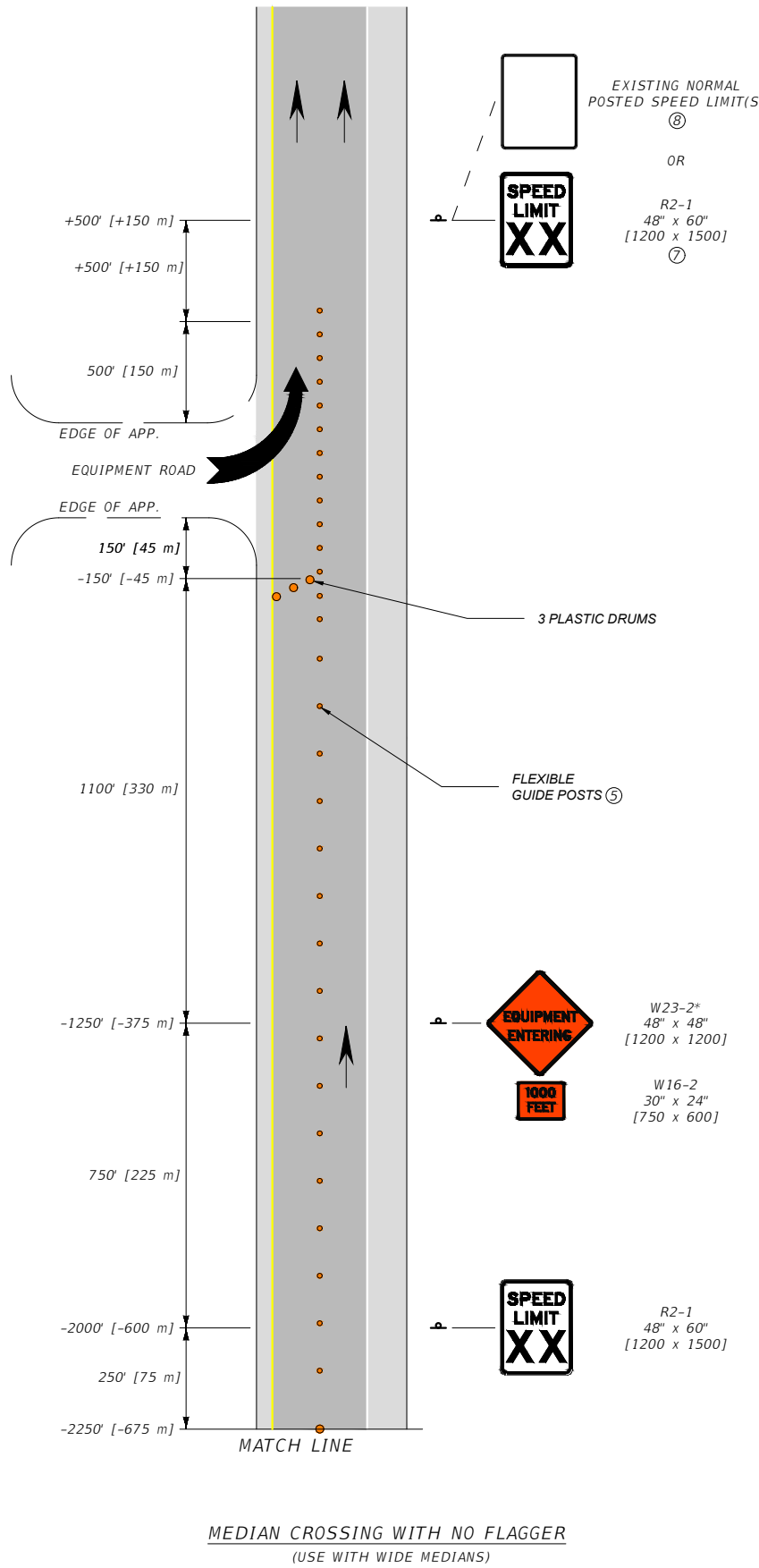
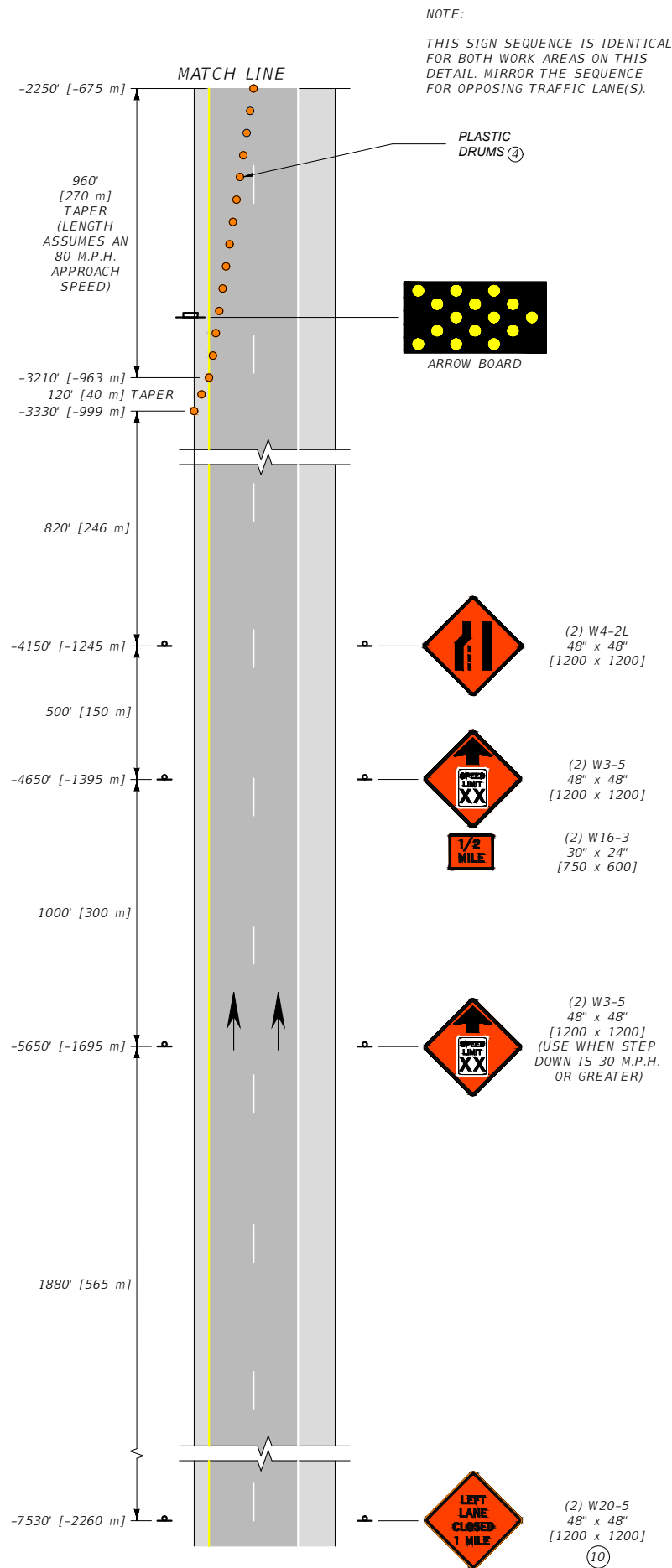


**MONTANA**  
Department of Transportation

--REVISED--  
JUN 27, 2024  
JUN 26, 2025

5/20/2025 1:02 PM

STDDRD618022.DWG



- NOTES:
- ① INCLUDE SPEED LIMIT SIGNING ONLY IF SPEED MUST BE RESTRICTED WITHIN THE WORK ZONE. REMOVE OR COVER REGULATORY SIGNS TO MATCH ADJACENT REGULATIONS.
  - ② THE BUFFER SPACE MAY BE INCREASED FOR DOWNGRADES AND OTHER CONDITIONS AFFECTING STOPPING DISTANCE.
  - ③ XX = SPEED DETERMINED BY PROJECT MANAGER.
  - ④ WHEN TAPER SECTIONS OCCUR OUTSIDE A CONSTRUCTION PROJECT, INCLUDE THE W20-1 AND R2-15\* SIGNS.
  - ⑤ SPACE FLEXIBLE GUIDE POSTS ON TANGENTS AT INTERVALS IN FEET [METERS] OF NO MORE THAN TWO [0.6] TIMES THE SPEED LIMIT IN M.P.H. SPACE PLASTIC DRUMS IN ALL TAPER SECTIONS AT INTERVALS IN FEET [METERS] OF NO MORE THAN ONE [0.3] TIMES THE SPEED LIMIT IN M.P.H. FOR SPEED LIMITS LESS THAN 35 M.P.H., SPACE CHANNELIZING DEVICES AS DIRECTED BY THE PROJECT MANAGER.
  - ⑥ IF FLAGGER IS MORE THAN ONE MILE [1.6 km] FROM THE LANE CLOSURE, INCLUDE W3-5 SIGNS AS REQUIRED.
  - ⑦ POST THE SPEED LIMIT APPROPRIATE FOR ALL VEHICLES FOR THE REMAINDER OF THE WORK ZONE BEFORE RESUMING TO NORMAL POSTED SPEED LIMITS AT THE END OF WORK ZONE.
  - ⑧ WHEN OUTSIDE A CONSTRUCTION PROJECT, POST THE SPEED LIMIT AS ONE LIMIT WHEN THE NORMAL POSTED SPEED LIMIT FOR ALL VEHICLES IS THE SAME. WHEN CAR AND TRUCK SPEED LIMITS DIFFER, POST BOTH LIMITS ON A SINGLE SIGN.
  - ⑨ AMBER LED FLASHERS MUST MEET STANDARD SPECIFICATION SECTION 715 AND DTL DWG. 618-01 REQUIREMENTS.
  - ⑩ POST THE W20-5 AFTER THE W20-1 OR G20-1 AND THE R2-15 IF THE MERGING TAPER OCCURS AT PROJECT BEGINNING.
- \* DENOTES SIGNS UNIQUE TO MONTANA.

UNITS SHOWN IN BRACKETS [ ] ARE METRIC AND ARE IN MILLIMETERS (mm) UNLESS OTHER UNITS ARE SHOWN.

DETAILED DRAWINGS	
REFERENCE	DWG. NO.
STANDARD SPEC.	618-23
SECTION 618, 715	

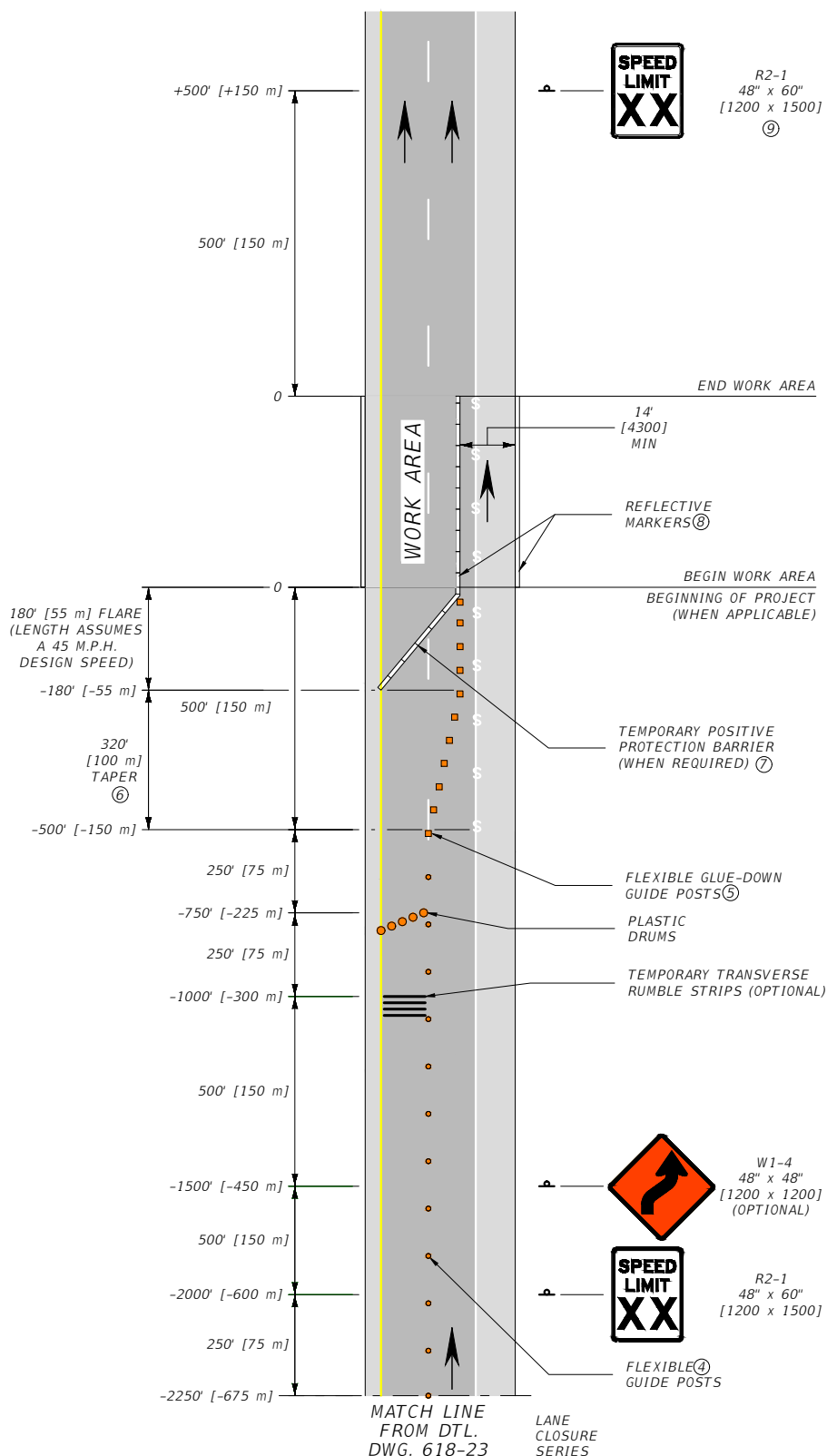
**DIVIDED FOUR-LANE MEDIAN CROSSING**

EFFECTIVE: JAN 23, 2020

--REVISED--
JUN 27, 2024
JUN 26, 2025

5/19/2025 1:41 PM STDDRD618023.DWG

**MONTANA**  
Department of Transportation



# NOTES:

- USE THESE SIGN LAYOUTS WITH THE LAYOUT ILLUSTRATED ON DTL. DWG. 618-23.
- INCLUDE REGULATORY SIGNING ONLY AS REQUIRED. REMOVE OR COVER REGULATORY SIGNS TO MATCH ADJACENT REGULATIONS.
- XX = SPEED DETERMINED BY THE PROJECT MANAGER.
- SPACE CHANNELIZING DEVICES ON TANGENTS AT INTERVALS IN FEET [METERS] OF NO MORE THAN TWO [0.6] TIMES THE SPEED LIMIT IN M.P.H. AND ON ALL TAPER SECTIONS AT INTERVALS IN FEET [METERS] OF NO MORE THAN ONE [0.3] TIMES THE SPEED LIMIT IN M.P.H. FOR SPEED LIMITS LESS THAN 35 M.P.H., SPACE CHANNELIZING DEVICES AS DIRECTED BY THE PROJECT MANAGER.
- SPACE FLEXIBLE GLUE-DOWN GUIDE POSTS USED FOR LANE SHIFT TAPER AT INTERVALS IN FEET [METERS] OF M.P.H.
- THE LANE SHIFT TAPER LENGTH ASSUMES AN 8' [2400] LANE SHIFT OFFSET AND AN 80 M.P.H. APPROACH SPEED. CONTACT THE PROJECT MANAGER IF CONDITIONS VARY.
- TEMPORARY POSITIVE PROTECTION BARRIER CAN TERMINATE AT THE CENTER OF THE CLOSED LANE FOR ACCESS PURPOSES IF AN APPROVED TEMPORARY IMPACT ATTENUATOR IS USED.
- PLACE REFLECTIVE MARKERS ALONG THE TOP OF TEMPORARY BARRIER AND ENSURE EXISTING BARRIER REFLECTORS ARE INTACT.
- POST THE SPEED LIMIT APPROPRIATE FOR ALL VEHICLES FOR THE REMAINDER OF THE WORK ZONE BEFORE RESUMING TO NORMAL POSTED SPEED LIMITS AT THE END OF THE WORK ZONE.
- OBLITERATE CONFLICTING PAVEMENT MARKINGS IN ACCORDANCE WITH SECTION 620 BEGINNING AT THE SHIFTING TAPER AND THROUGH THE WORK AREA.

\* DENOTES SIGNS UNIQUE TO MONTANA.

UNITS SHOWN IN BRACKETS [ ] ARE METRIC AND ARE IN MILLIMETERS (mm) UNLESS OTHER UNITS ARE SHOWN.

## DETAILED DRAWINGS

REFERENCE	DWG. NO.
STANDARD SPEC.	618-24
SECTION 618	

## DIVIDED FOUR-LANE SINGLE LANE CLOSURE LANE SHIFT

EFFECTIVE: JAN 23, 2020



**MONTANA**  
Department of Transportation

--REVISED--

JUN 27, 2024  
JUN 26, 2025

5/19/2025 2:11 PM

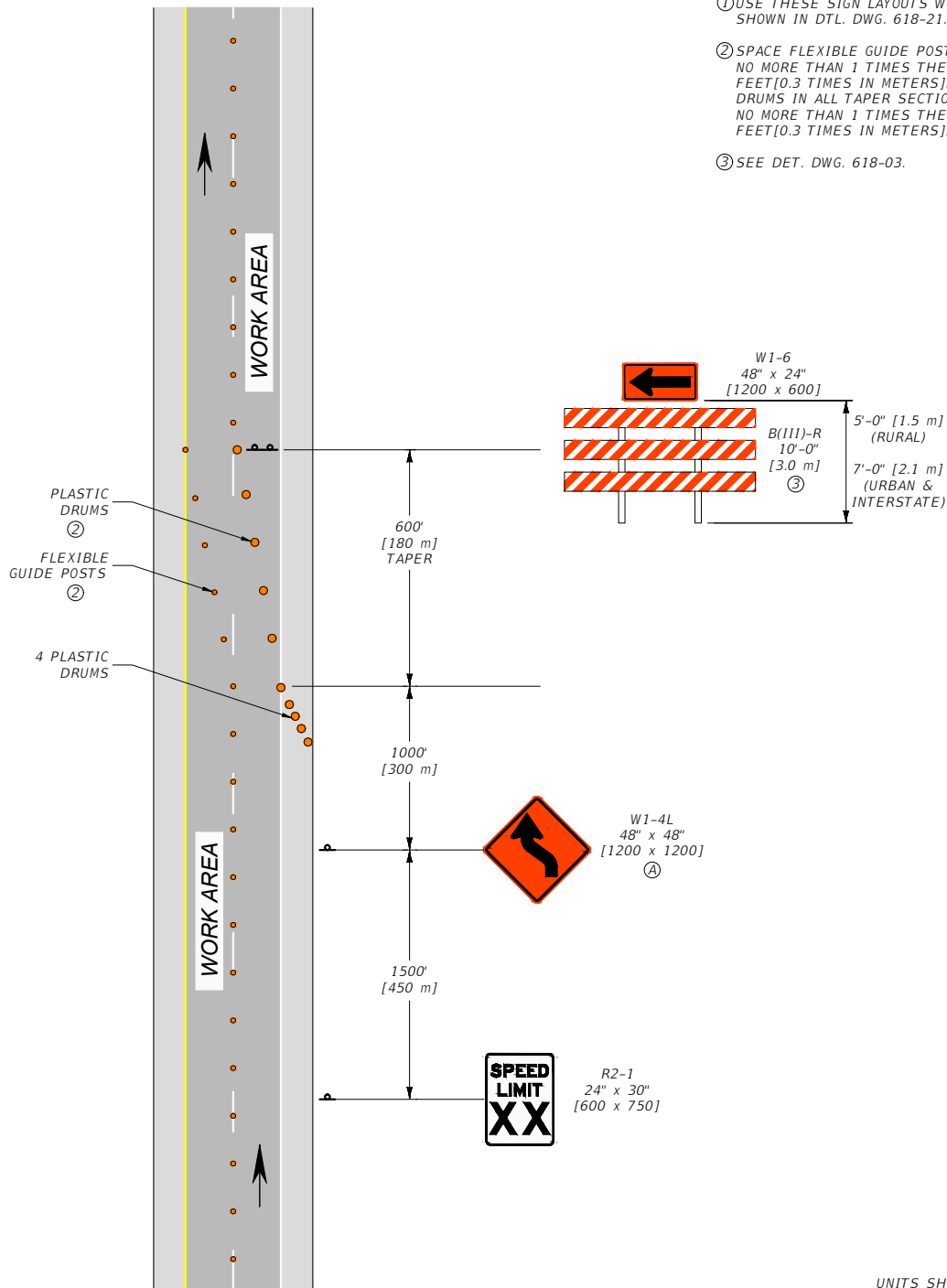
STDDR0618024.DWG

### LEGEND

- OBLITERATE CONFLICTING PAVEMENT MARKINGS ⑩
- PLASTIC DRUMS (SEE NOTES FOR SPACING)
- FLEXIBLE GLUE-DOWN GUIDE POSTS (SEE NOTES FOR SPACING)
- FLEXIBLE GUIDE POSTS

NOTES:

- ① USE THESE SIGN LAYOUTS WITH THE LAYOUT SHOWN IN DTL. DWG. 618-21.
- ② SPACE FLEXIBLE GUIDE POSTS AT INTERVALS NO MORE THAN 1 TIMES THE SPEED LIMIT IN FEET [0.3 TIMES IN METERS]. SPACE PLASTIC DRUMS IN ALL TAPER SECTIONS AT INTERVALS NO MORE THAN 1 TIMES THE SPEED LIMIT IN FEET [0.3 TIMES IN METERS].
- ③ SEE DET. DWG. 618-03.



UNITS SHOWN IN BRACKETS [ ] ARE METRIC AND ARE IN MILLIMETERS (mm) UNLESS OTHER UNITS ARE SHOWN.

LEGEND

- - FLEXIBLE GUIDE POSTS
- - PLASTIC DRUMS

XX - SPEED DETERMINED BY THE PROJECT MANAGER.

DETAILED DRAWINGS

REFERENCE	DWG. NO.
STANDARD SPEC.	618-25
SECTION 618	

DIVIDED FOUR-LANE LANE SHIFT

EFFECTIVE: JUN 26, 2025



**MONTANA**  
Department of Transportation

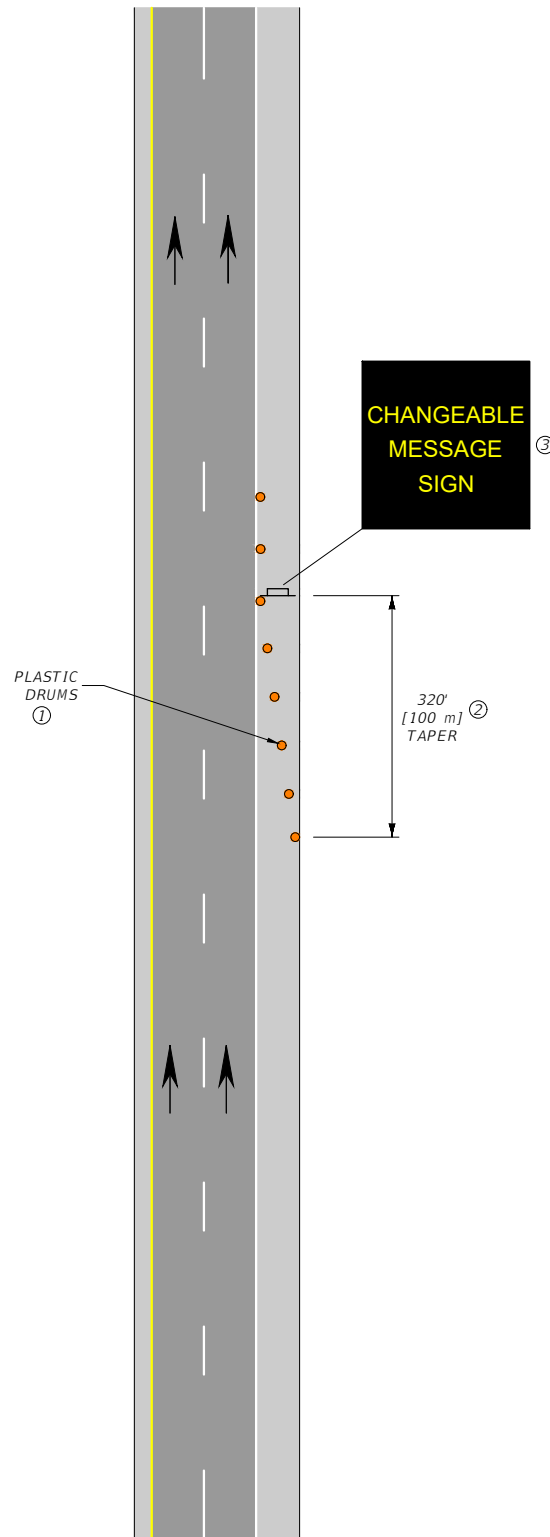
--REVISED--

5/19/2025 2:46 PM

STDDRD618025.DWG

NOTES:

- ① SPACE PLASTIC DRUMS AT INTERVALS NO MORE THAN 1 TIMES THE SPEED LIMIT IN FEET [0.3 TIMES IN METERS].
- ② DEVICE SPACINGS ARE MAXIMUMS AND CAN BE REDUCED BUT THE TAPER DISTANCE IS A MINIMUM AND CAN BE INCREASED IF CONDITIONS WARRANT.
- ③ CHANGEABLE MESSAGE SIGN MUST BE CAPABLE OF PROVIDING 2 PHASES WITH 3 LINES AND 8 CHARACTERS PER LINE. CHARACTERS MUST BE AT LEAST 18 INCH [450] HIGH. TWO LANE ROADS WITH SPEEDS LESS THAN 50 M.P.H. REQUIRE A MINIMUM 10 INCH [250] CHARACTER HEIGHT.



UNITS SHOWN IN BRACKETS [ ] ARE METRIC AND ARE IN MILLIMETERS (mm) UNLESS OTHER UNITS ARE SHOWN.

**DETAILED DRAWINGS**

REFERENCE	DWG. NO.
STANDARD SPEC.	618-26
SECTION 618	

**DIVIDED FOUR-LANE SHOULDER MESSAGE SIGN**

EFFECTIVE: JUN 26, 2024

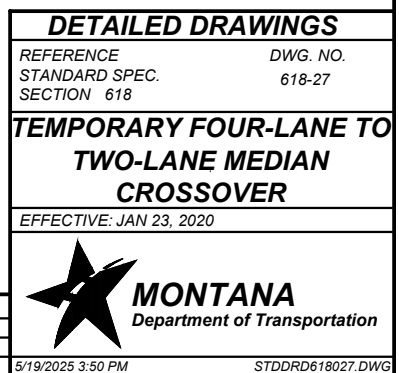
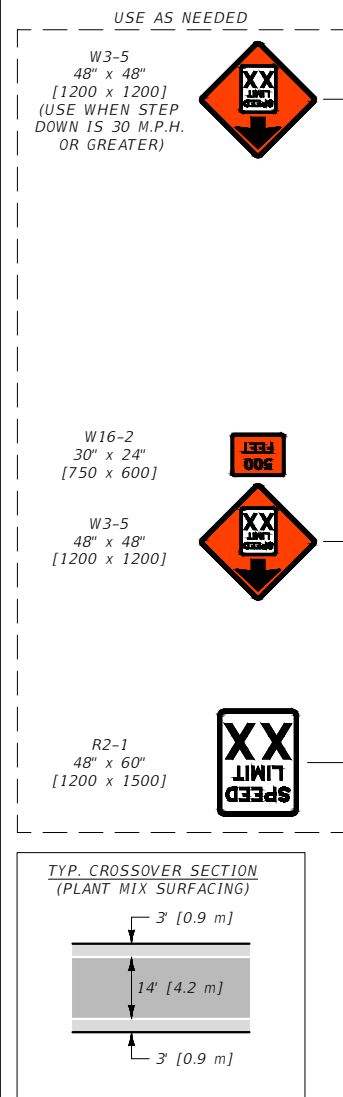
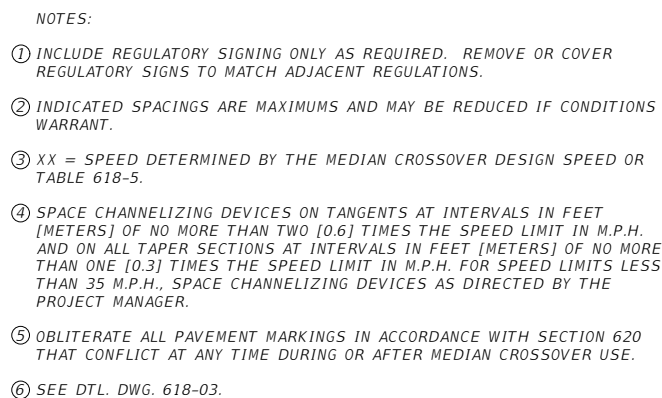


--REVISED--

5/19/2025 3:35 PM

STDDRD618026.DWG









MATCH LINE FROM  
DTL. DWG. 618-27

NOTES:

- ① SPACE CHANNELIZING DEVICES ON TANGENTS AT INTERVALS IN FEET [METERS] OF NO MORE THAN 2 [0.6] TIMES THE SPEED LIMIT IN M.P.H. AND ON ALL TAPER SECTIONS AT INTERVALS IN FEET [METERS] OF NO MORE THAN 1 [0.3] TIMES THE SPEED LIMIT IN M.P.H. FOR SPEED LIMITS LESS THAN 35 M.P.H., SPACE CHANNELIZING DEVICES AS DIRECTED BY THE PROJECT MANAGER.
- ② OBLITERATE PAVEMENT MARKINGS IN ACCORDANCE WITH SECTION 620 THAT CONFLICT AT ANY TIME DURING OR AFTER MEDIAN CROSSOVER USE.
- ③ INDICATED SPACINGS ARE MAXIMUMS, BUT MAY BE REDUCED IF CONDITIONS WARRANT.
- ④ SEE DET. DWG. 618-03.

FLEXIBLE GLUE  
DOWN GUIDE  
POSTS SPACED  
AT 20' [6 m] MAX.

R3-2  
36" x 36"  
[900 x 900]



W4-1  
48" x 48"  
[1200 x 1200]



12:1  
TAPER

R3-2  
36" x 36"  
[900 x 900]



LEGEND

- OBLITERATE CONFLICTING PAVEMENT MARKINGS AND FILL ANY EXISTING RUMBLE STRIPS WITH PMS
- PLASTIC DRUMS (SEE NOTES FOR SPACING)
- PROVIDE STRIPING IN ACCORDANCE WITH SECTION 620 OR RAISED RIGID PAVEMENT MARKERS AT 5' [1.5 m] SPACING
- DOUBLE YELLOW PAINT OR DOUBLE PLASTIC PAVEMENT MARKING TABS AT 5' [1.5 m] SPACING
- FLEXIBLE GLUE-DOWN GUIDE POSTS ON TWO-LANE (SEE NOTES FOR SPACING EXCEPT AS SHOWN)

UNITS SHOWN IN BRACKETS [ ] ARE  
METRIC AND ARE IN MILLIMETERS (mm)  
UNLESS OTHER UNITS ARE SHOWN.

--REVISED--

JUN 27, 2024  
JUN 26, 2025

DETAILED DRAWINGS

REFERENCE DWG. NO.  
STANDARD SPEC. 618-29  
SECTION 618

TEMPORARY ENTRANCE  
RAMP MEDIAN CROSSOVER

EFFECTIVE: JAN 23, 2020



**MONTANA**  
Department of Transportation

5/19/2025 3:39 PM

STDRD618029.DWG

LEGEND	
	OBLITERATE CONFLICTING PAVEMENT MARKINGS AND FILL ANY EXISTING RUMBLE STRIPS WITH PMS
	PLASTIC DRUMS (SEE NOTES FOR SPACING)
	PROVIDE STRIPING IN ACCORDANCE WITH SECTION 620 OR RAISED RIGID PAVEMENT MARKERS AT 5' [1.5 m] SPACING
	DOUBLE YELLOW PAINT OR DOUBLE PLASTIC PAVEMENT MARKING TABS AT 5' [1.5 m] SPACING
	FLEXIBLE GLUE-DOWN GUIDE POSTS ON TWO-LANE (SEE NOTES FOR SPACING EXCEPT AS SHOWN)

E5-1  
60" x 48"  
[1500 x 1200]



R3-2  
36" x 36"  
[900 x 900]



FLEXIBLE GLUE  
DOWN GUIDE  
POSTS SPACED  
AT HALF NORMAL  
SPACING

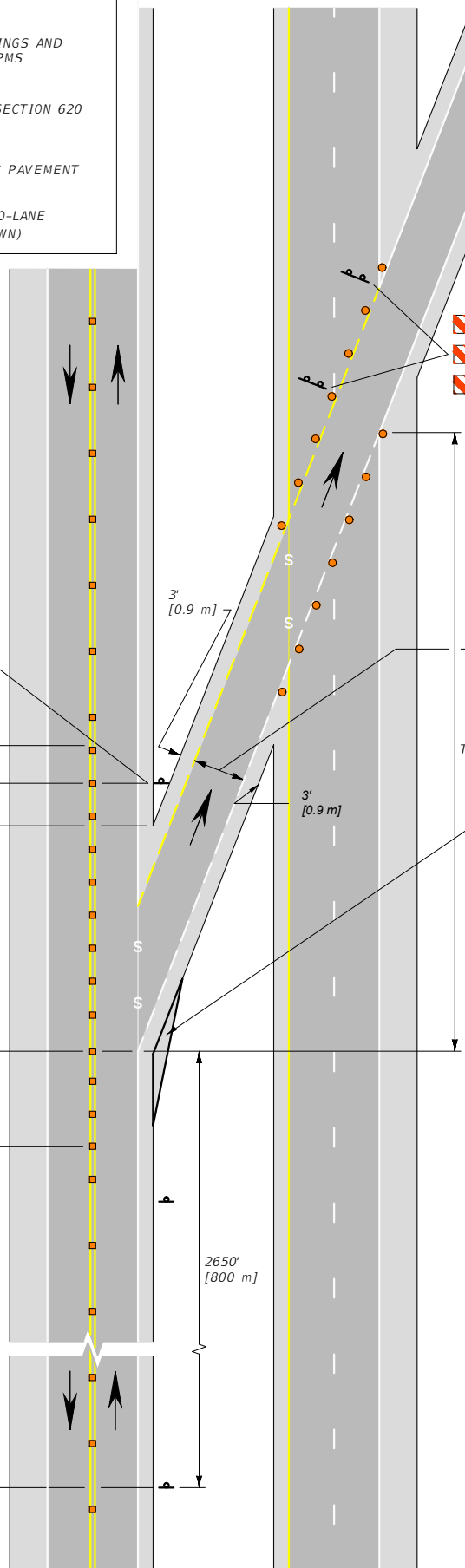
W6-3  
48" x 48"  
[1200 x 1200]



E7-1  
72" x 36"  
[1800 x 900]

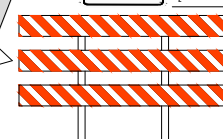


UNITS SHOWN IN BRACKETS [ ] ARE  
METRIC AND ARE IN MILLIMETERS (mm)  
UNLESS OTHER UNITS ARE SHOWN.



ROAD  
CLOSED

R11-2  
48" x 30"  
[1200 x 750]



5'-0" [1.5 m]  
(RURAL)  
7'-0" [2.1 m]  
(URBAN &  
INTERSTATE)

ADDITIONAL PLANT MIX SURFACING  
TO ALLOW FOR SAFE TURNING  
MOVEMENTS (SEE DTL. DWG.  
618-28 FOR DIMENSIONS)

NOTES:

- SPACE CHANNELIZING DEVICES ON TANGENTS AT INTERVALS IN FEET [METERS] OF NO MORE THAN 2 [0.6] TIMES THE SPEED LIMIT IN M.P.H. AND ON ALL TAPER SECTIONS AT INTERVALS IN FEET [METERS] OF NO MORE THAN 1 [0.3] TIMES THE SPEED LIMIT IN M.P.H. FOR SPEED LIMITS LESS THAN 35 M.P.H. SPACE CHANNELIZING DEVICES AS DIRECTED BY THE PROJECT MANAGER.
- OBLITERATE ALL PAVEMENT MARKINGS IN ACCORDANCE WITH SECTION 620 THAT CONFLICT AT ANY TIME DURING OR AFTER MEDIAN CROSSOVER USE.
- INDICATED SPACINGS ARE MAXIMUMS, BUT MAY BE REDUCED IF CONDITIONS WARRANT.
- PROVIDE ADDITIONAL SIGNING FOR EXIT DESTINATION WHEN EXIT DELINEATION IS NOT VISIBLE.
- SEE DET. DWG. 618-03.

## DETAILED DRAWINGS

REFERENCE STANDARD SPEC. SECTION 618	DWG. NO. 618-30
--	--------------------

## TEMPORARY EXIT RAMP MEDIAN CROSSOVER

EFFECTIVE: JAN 23, 2020

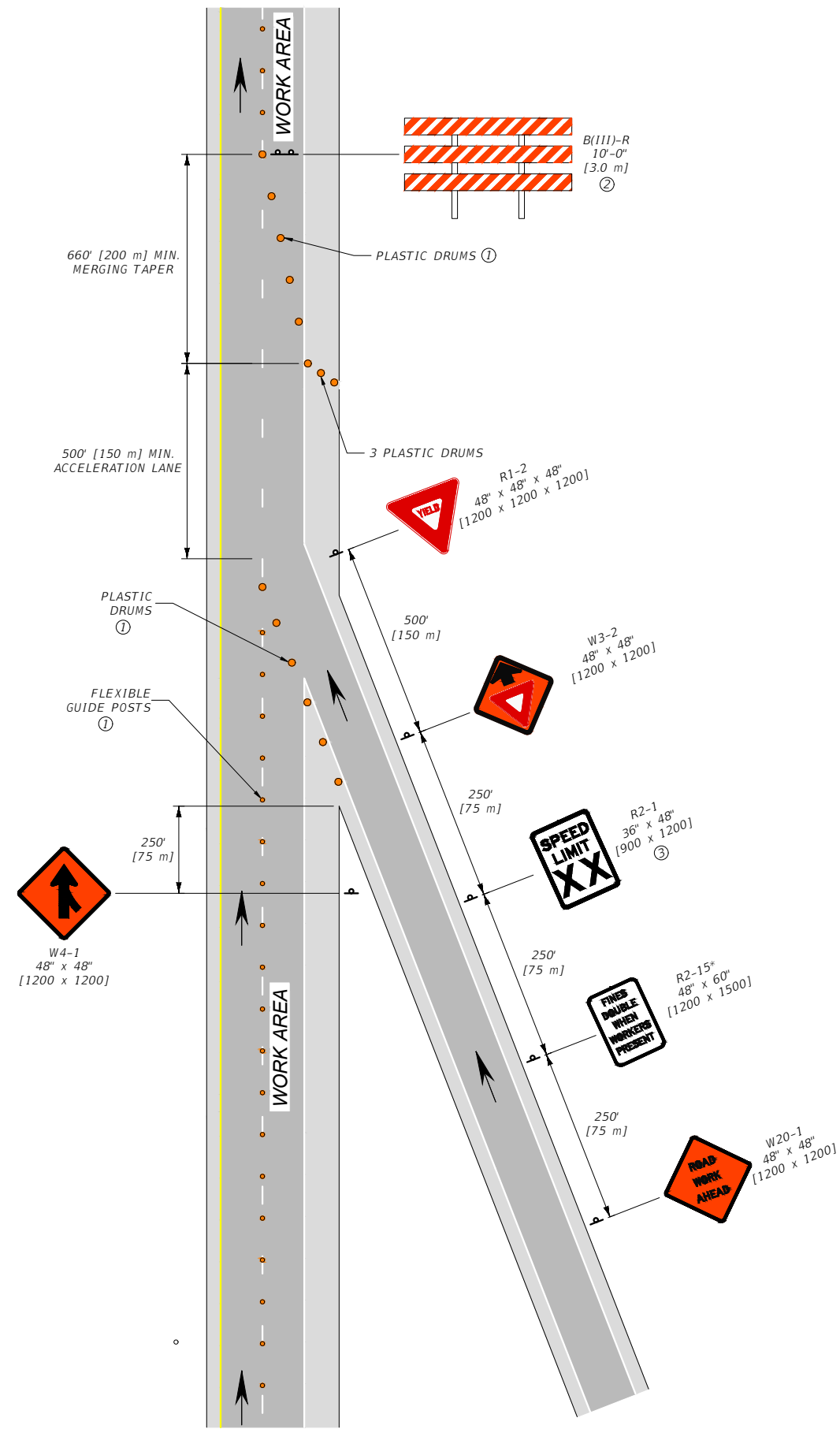


**MONTANA**  
Department of Transportation

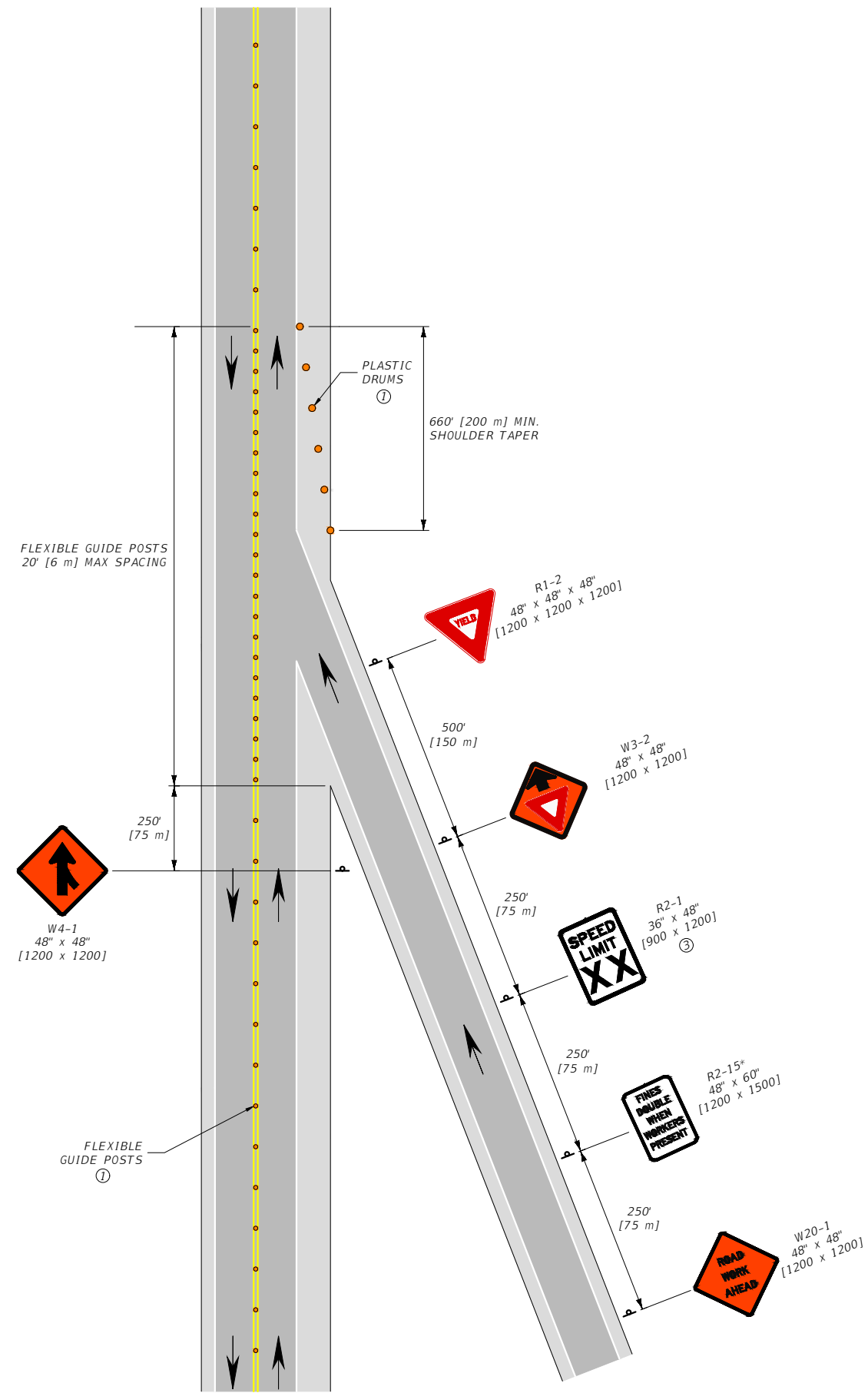
--REVISED--  
JUN 27, 2024  
JUN 26, 2025

5/19/2025 3:41 PM

STDDRD618030.DWG



RAMP MERGE WARNING - RIGHT LANE CLOSED



RAMP MERGE WARNING - LEFT LANE CLOSED

NOTES:

- ① SPACE FLEXIBLE GUIDE POSTS ON TANGENTS AT INTERVALS IN FEET [METERS] OF NO MORE THAN 2 [0.6] TIMES THE SPEED LIMIT IN M.P.H. SPACE PLASTIC DRUMS IN ALL TAPER SECTIONS AT INTERVALS IN FEET [METERS] OF NO MORE THAN 1 [0.3] TIMES THE SPEED LIMIT IN M.P.H. FOR SPEED LIMITS LESS THAN 35 M.P.H. SPACE CHANNELIZING DEVICES AS DIRECTED BY THE PROJECT MANAGER.
- ② SEE DET. DWG. 618-03.
- ③ XX = MAINLINE SPEED LIMIT.
- ④ FIELD ADJUST SIGN SPACING BASED ON RAMP LENGTH.

UNITS SHOWN IN BRACKETS [ ] ARE METRIC AND ARE IN MILLIMETERS (mm) UNLESS OTHER UNITS ARE SHOWN.

DETAILED DRAWINGS	
REFERENCE	DWG. NO.
STANDARD SPEC.	618-31
SECTION 618, 715	

DIVIDED FOUR-LANE RAMP MERGE

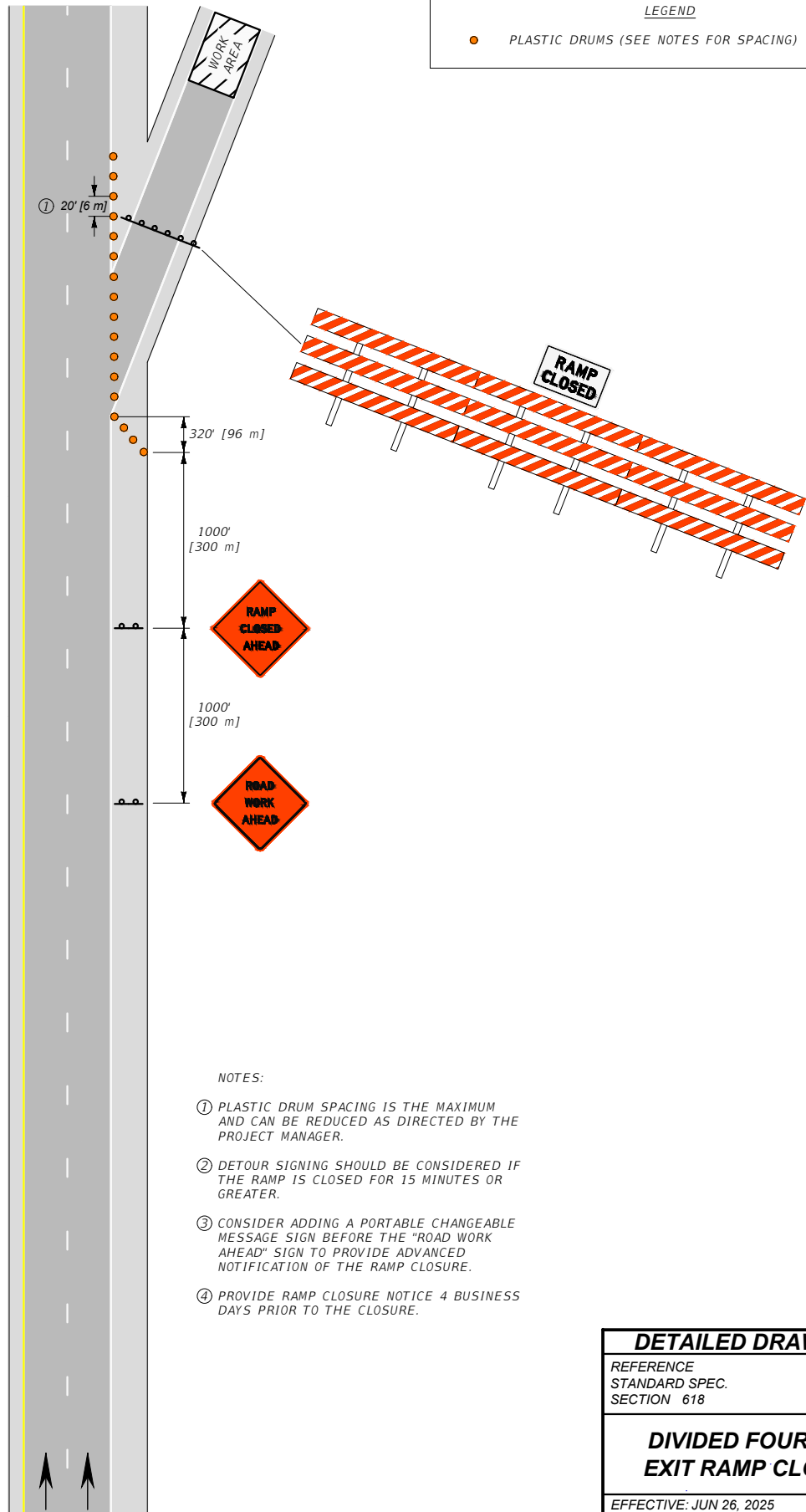
EFFECTIVE: JUN 26, 2025



5/19/2025 3:57 PM

STDDRD618031.DWG

--REVISED--



**NOTES:**

- ① PLASTIC DRUM SPACING IS THE MAXIMUM AND CAN BE REDUCED AS DIRECTED BY THE PROJECT MANAGER.
- ② DETOUR SIGNING SHOULD BE CONSIDERED IF THE RAMP IS CLOSED FOR 15 MINUTES OR GREATER.
- ③ CONSIDER ADDING A PORTABLE CHANGEABLE MESSAGE SIGN BEFORE THE "ROAD WORK AHEAD" SIGN TO PROVIDE ADVANCED NOTIFICATION OF THE RAMP CLOSURE.
- ④ PROVIDE RAMP CLOSURE NOTICE 4 BUSINESS DAYS PRIOR TO THE CLOSURE.

UNITS SHOWN IN BRACKETS [ ] ARE METRIC AND ARE IN MILLIMETERS (mm) UNLESS OTHER UNITS ARE SHOWN.

**DETAILED DRAWINGS**

REFERENCE	DWG. NO.
STANDARD SPEC.	618-32
SECTION 618	

**DIVIDED FOUR-LANE  
EXIT RAMP CLOSURE**

EFFECTIVE: JUN 26, 2025

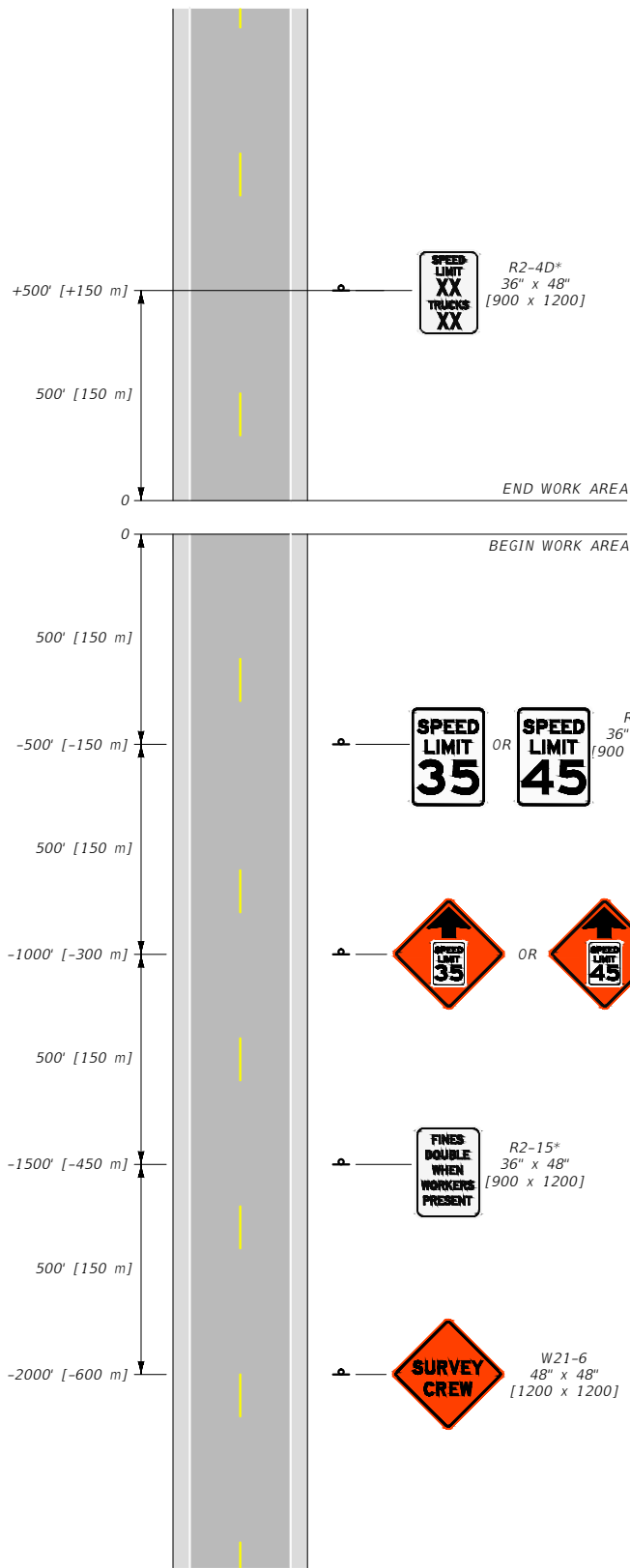


**MONTANA**  
Department of Transportation

--REVISED--

5/19/2025 3:48 PM

STDDRD618032.DWG



NOTES:

- ① "SHORT DURATION ACTIVITIES" ARE THOSE LASTING LESS THAN AN HOUR.  
SHORT-TERM ACTIVITIES ARE THOSE LASTING LONGER THAN ONE HOUR BUT ENDING WITHIN A FULL SHIFT.
- ② REGULATORY SPEED SIGNS MUST MOVE AS NEEDED TO REMAIN WITHIN 500 FEET [150 m] OF THE WORK AREA.
- ③ SIGN BOTH TRAVEL DIRECTIONS ON TWO-LANE, TWO-WAY ROADWAYS OR BOTH SHOULDERS ON TWO-LANE, ONE-WAY ROADWAYS.
- ④ PROVIDE AT LEAST THE DISTANCE SHOWN FOR DELINEATOR MOUNTED SIGNS.
- ⑤ USE REFLECTIVE DEVICES.
- ⑥ XX = NORMAL POSTED SPEED LIMIT(S).

\* DENOTES SIGNS UNIQUE TO MONTANA.

UNITS SHOWN IN BRACKETS [ ] ARE METRIC AND ARE IN MILLIMETERS (mm) UNLESS OTHER UNITS ARE SHOWN.

**DETAILED DRAWINGS**

REFERENCE	DWG. NO.
STANDARD SPEC.	618-40
SECTION 618	

**SHORT DURATION OR  
SHORT-TERM STATIONARY  
CREW SIGNING**

EFFECTIVE: JAN 23, 2020



**MONTANA**  
Department of Transportation

--REVISED--  
JUN 27, 2024  
JUN 26, 2025

5/19/2025 3:50 PM

STDDRD618040.DWG