

Digital Design and Modeling Services – CAD

BIM 360 TO AUTODESK CONSTRUCTION CLOUD (ACC) MIGRATION PREPARATION GUIDE

ISSUE:

Autodesk is beginning to migrate users away from BIM 360. They are moving towards the Autodesk Construction Cloud (ACC), which includes Autodesk Docs, and BIM Collaborate Pro. ACC is an Autodesk cloud-based platform designed to connect teams, data, and workflows. It aims to streamline collaboration, enhance communication, and improve project efficiency by providing a unified platform for various design and construction management tools. BIM 360 Design and other BIM 360 products are not being discontinued; however, new development, support, and technologies are being provided with the Autodesk Construction Cloud.

SOLUTION:

MDT is migrating ALL project design data and users from BIM 360 to ACC. Users will be required to prepare for migration when notified and perform post-migration steps.

Application/Tool(s):
BIM 360 / ACC / Desktop
Connector

Version(s):
N/A

Environment:
N/A

Released/Revised:
11/19/2025

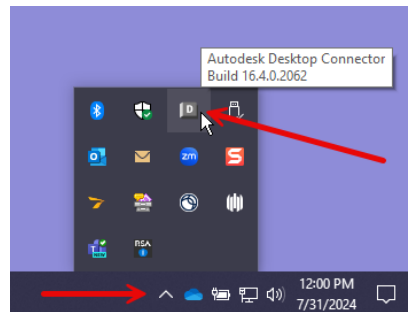
SUPPORT
Digital Design and
Modeling Services
CAD

https://montana.servicenowservices.com/citizen?id=sc_cat_item&sys_id=13ac75551bc1091049e0ed3ce54bcb3d

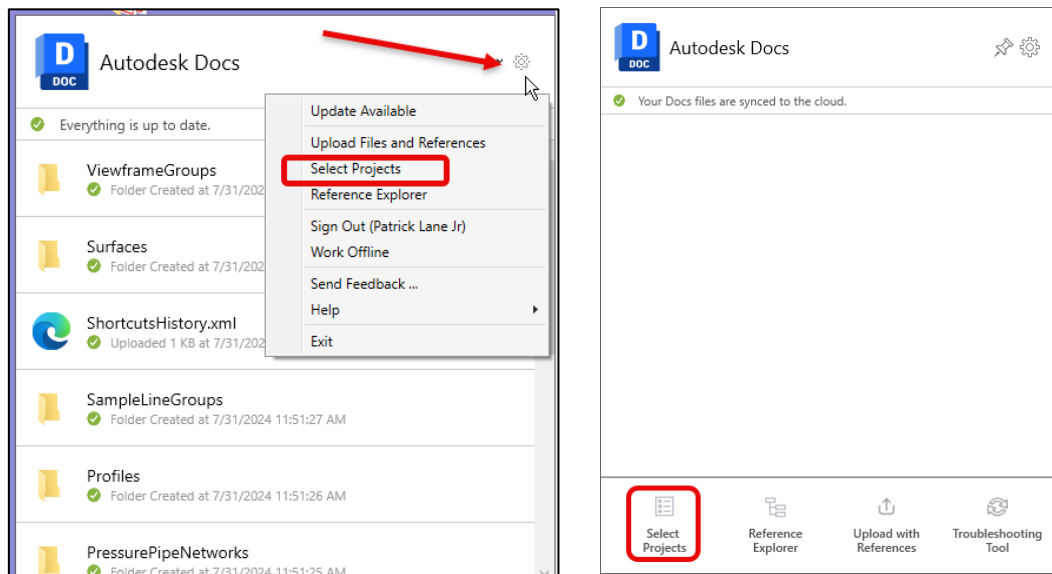
BIM 360 TO AUTODESK CONSTRUCTION CLOUD (ACC) MIGRATION PREPARATION GUIDE

BEFORE MIGRATION PROCEDURE:

- 1) Save all your Autodesk work in the appropriate location on BIM 360. This is performed by simply saving your files normally in Civil 3D 2024. If your files are not saved on the cloud, and are saved locally on your computer device, you will need to upload them to the appropriate project folder on BIM 360 using the web interface.
- 2) Close all the Autodesk applications (Civil 3D, AutoCAD, Revit, etc.) on your device.
- 3) Select the Desktop Connector icon from the system tray of the task bar or from the Show Hidden Icons arrow “ ^ “ in the system tray of the task bar.

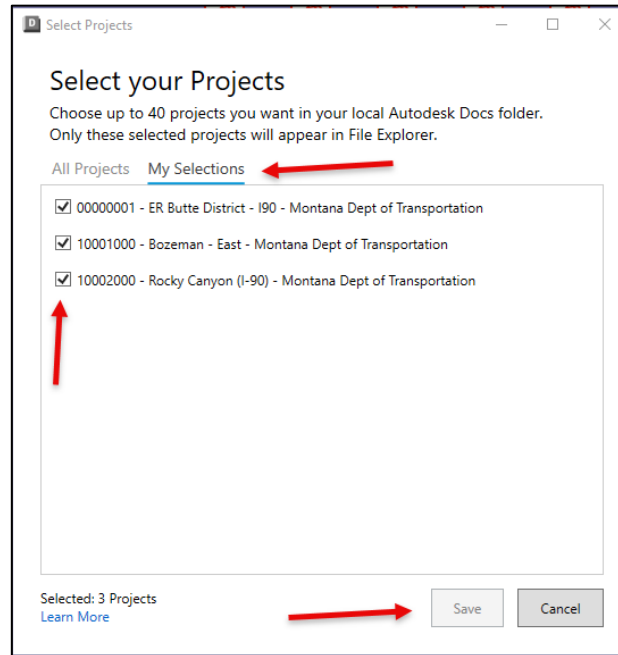


- 4) The Desktop Connector dialog box will appear. Navigate to the Select Projects prompt either at the bottom left of the Desktop Connector Menu or by clicking the gear in the top right corner and selecting “Select Projects” in the drop down menu.

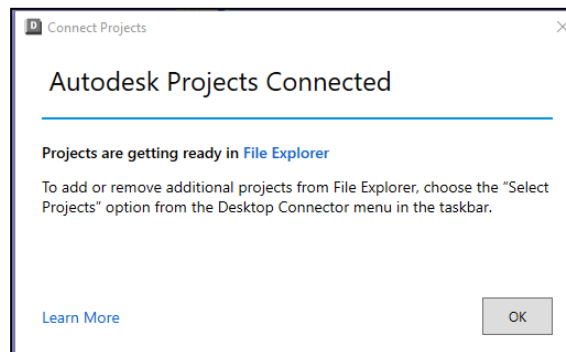


BIM 360 TO AUTODESK CONSTRUCTION CLOUD (ACC) MIGRATION PREPARATION GUIDE

- 5) From the Select your Projects dialog screen, choose the “My Selections” view. Once your projects have populated in the screen, remove the check mark from **ALL** the projects and save.



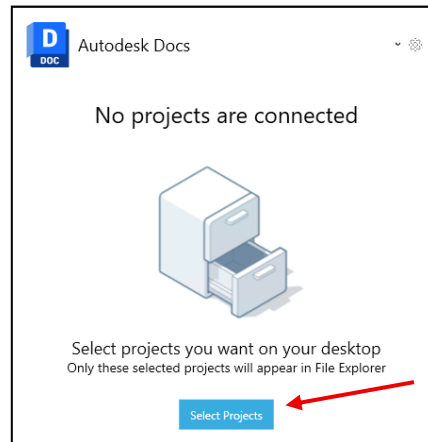
The following popup will appear. Select “OK”. All of your projects are now disconnected from BIM 360 and your data is ready to migrate to ACC



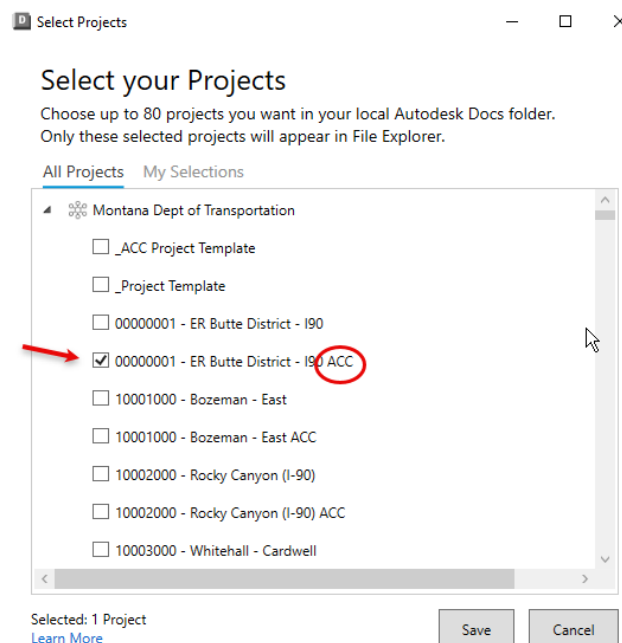
BIM 360 TO AUTODESK CONSTRUCTION CLOUD (ACC) MIGRATION PREPARATION GUIDE

AFTER MIGRATION PROCEDURE:

Prior to using any Autodesk products, reopen the Desktop Connector from the icon in the task bar, as shown above, and the following dialog box should appear. Choose the Select Projects dialog box.



- 6) Begin to select the projects you are working on by checking the box next to the project name. You can choose up to 80 projects.
**** You are looking for the project with ACC at the end of the project name as shown in the example below.**



- 7) Once you have selected all your projects, you can click save. You will see a pop up that your Autodesk projects are now connected.

BIM 360 TO AUTODESK CONSTRUCTION CLOUD (ACC) MIGRATION PREPARATION GUIDE

FREQUENTLY ASKED QUESTIONS

Question:

What if I am out of the office on vacation and/or sick leave?

Answer:

Prior to leaving for vacation remove your projects from the Desktop Connector. All users will lose access to BIM 360 projects through permissions. When you return, you will need to access your desktop connector, remove any BIM 360 projects, and add ACC projects.

Question:

What if I forget to perform these steps?

Answer:

All users will lose access to BIM 360 projects through permissions. When you return, you will need to access your desktop connector, remove any BIM 360 projects, and add ACC projects.

Question:

How do I enter a Service Desk Ticket if I am having issues with the Desktop Connector?

Answer:

The following is a link to the MDT Service Desk where you can open a Case.
[Service Desk Link](#)

REFERENCES

[What Is the Autodesk Construction Cloud?](#)