

### Tip Guide

Application/Tool(s): AutoCAD / Civil 3D  
Version(s): 13.6.2123.0 Civil 3D 2024.4.6 Update  
Environment: MDT Civil 3D State Kit r2024 v2.3.1  
Released/Revised: 4/20/2026



**SUPPORT**  
Open a Case

## SURVEY DATABASES AND QUERIES

### Overview

This document is a supplement to the Cross Sections in Autodesk procedure. It contains further information on survey databases and survey queries and their potential uses.

### Definitions Used in This Document

Survey Database – A central storage location for all survey data and information.

Survey Queries – A tool used to filter survey points and figures from a survey database based on specific criteria.

# SURVEY DATABASES AND QUERIES

## Survey Databases and Queries Uses and Tricks

Moving forward it will be common procedure for the District Automation Specialist (DAS) to create survey databases and import survey queries into the survey databases.

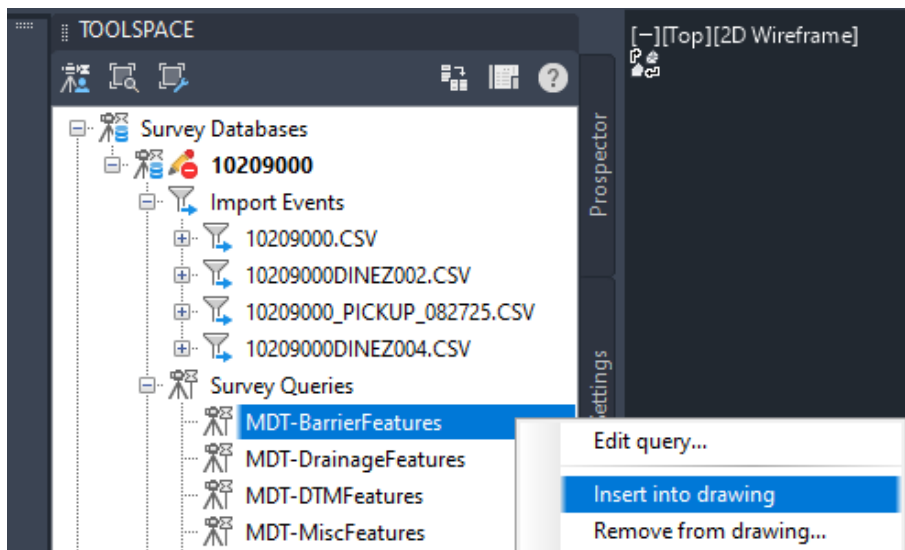
This allows designers to import specific survey data into a drawing without using the traditional method of creating an external reference of the DIMAP, exploding the drawing, and deleting out unnecessary data.

### To Open a survey database

1. In the **Survey** tab of the **Toolspace** right click on **Survey Databases** and select **Set Working Folder...**
2. Navigate to the DI or CS folder of the project and click **Select Folder**. If done correctly, the survey database will auto populate with the project.

### To Open and Use Survey Queries

1. Right click on the project survey database in the **Survey** tab of **Toolspace**.  
NOTE: This was opened in the steps above.
2. Select **Open for read-only**.
3. This will open the pre-imported survey queries. To insert survey query data into a drawing right click on the desired query and select **Insert into drawing**.



## SURVEY DATABASES AND QUERIES

**CAUTION:** Inserted survey figures will have grip edits that allow users to click and drag vertices. This may result in accidental edits of survey data, to avoid this, lock the layer the survey elements came in with by using the command **LAYLCK** or the **Layer Properties Manager**.

To undo accidental edits right click on the survey figure and select **Update from Survey Data**. Or repeat step 3 above, which will reinsert all figures in the unedited locations.

