

Welcome to Montana!

The Land of Shining Mountains offers you a wealth of recreation opportunities in the midst of great scenic splendor and an atmosphere alive with the excitement of the West.

We invite you to share our enjoyment of towering mountains, evergreen forests, colorful badlands, and sparkling lakes and streams.

Take time to see the variety of Montana—visit us often—and drive with care.

Sincerely, J. Hugo Aronson Governor

TRAFFIC REGULATIONS AND SAFETY RULES

- 1. Montana speed limits: Daylight—reasonable and prudent speed; 55 miles per hour during the hours when lights are required, except where zoned and posted. Trucks in excess of 6,000 pounds gross weight—50 miles per hour. Vehicles towing house trailers—50 miles per hour. Speed limit on roads under construction—35 miles per hour.
2. Vehicles entering main highways from side road or drive must yield right-of-way to vehicles traveling main highways.
3. Vehicles must drive to right of center line at all times except when passing another car. Never pass on hills or curves. Be sure you can see far enough ahead to make a safe passing.
4. Proper signal must be given when passing another vehicle, including direction, stopping or slowing down on the highway. Sound horn to warn the car ahead you are going to pass; left turn, left hand and arm extended horizontally; right turn, left hand and arm extended upward; stop or slow down, left arm extended downward. Electrical turn indicators are legal. Obey all warning signs, such as School Zone, Stop, Slow, Danger, Curve, Yield Right-of-Way, and others.
5. Never drive at a speed greater than that at which you can stop in the clear road visible ahead. Slow down at night or when the road is wet, or icy. When approaching another car from either the front or rear, dim your lights, don't be afraid to dim first. Courtesy promotes safety.
6. Slow down when approaching any child, pedestrian, bicycle, livestock, parked car, or other obstruction of the highway. Be prepared for the unexpected.
7. Don't stop or park on the main-traveled portion of the highway, especially on hills or curves. Pull out on the shoulder. It's safer for you and other cars.
8. Accidents resulting in death, personal injury, or property damage of an apparent extent of \$100 or more requires immediate notification to Sheriff, Police or Highway Patrol by quickest means of communication. This notice must be followed by a written report to Montana Highway Patrol Board, Helena, Montana within ten days.
9. When approaching school buses loading or unloading school children, drivers must stop and not proceed until school bus resumes motion.
10. Littering highways prohibited—HELP KEEP MONTANA CLEAN.
11. PREVENT FOREST FIRES—USE YOUR ASH TRAY.

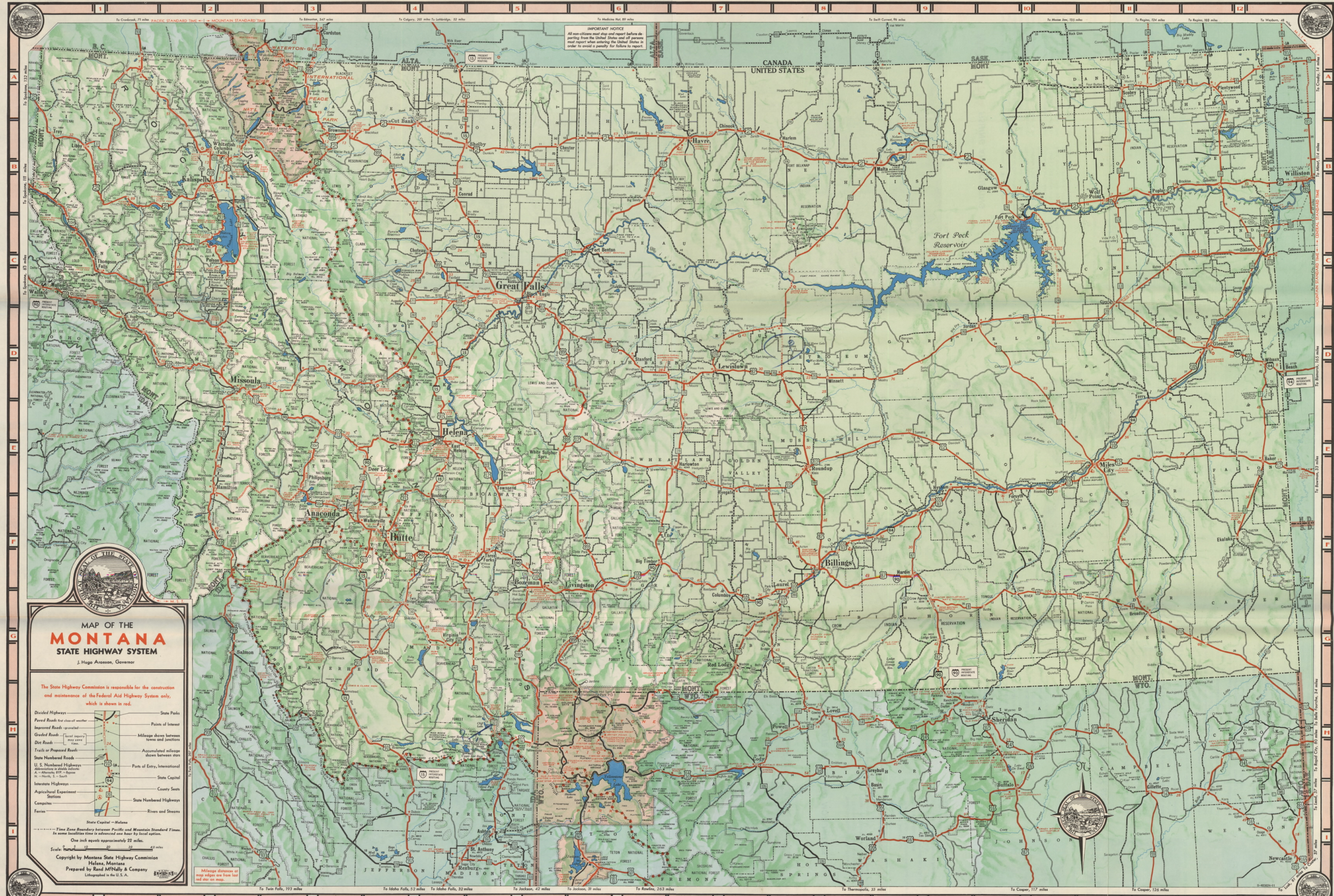
TIPS FOR TRAILER OWNERS

Montana highway regulations provide that no combination of auto and trailer shall exceed 63 ft. in length, or 95 in. in total outside width, or 13 ft. 6 in. in height. Trailers should carry red lights to the rear; green, amber or white lights to the front and amber side lights. The speed limit for vehicles towing house trailers is 50 miles per hour. No person shall occupy a house trailer while it is being moved upon the highway.

- Principal mountain passes in Montana are: Lookout Pass—U. S. 10 at Montana-Idaho border. El. 4,738. Oiled, water stops.
MacDonald Pass—U. S. 10 W of Helena. El. 6,325. Oiled, water stops.
Pipestone Pass—U. S. 10 E of Butte. El. 6,418. Oiled, water stops.
Bozeman Pass—U. S. 10 E of Bozeman. El. 6,002. Oiled.
Marias Pass—U. S. 2 west of East Glacier. El. 5,216. Oiled, water stops.
Logan Pass—Glacier Park's Going-to-the-Sun Highway. El. 6,664. Oiled. Not advised for large trailers.
Bearthooth Pass—Red Lodge-Yellowstone Highway, U. S. 22. El. 10,940. Oiled. Not advised for large trailers.
Kings Hill—U. S. 89 north of White Sulphur Springs. El. 7,389. Part not oiled.
Elk Park Pass—U. S. 91 northeast of Butte. El. 6,372. Oiled, water stops.
Monika Pass—U. S. 91 at Montana-Idaho border. El. 6,823. Oiled. Easy grade.
Targhee Pass—U. S. 191 and 20 at Montana-Idaho border. El. 7,078. Oiled. Easy grade.
Lost Trail Pass—U. S. 93 at Montana-Idaho border. El. 6,951. Oiled.
Pass—Montana 43, southeast of Lost Trail, Pass El. 7,241. Not oiled. Not advised for trailers.
Rogers Pass—Montana 20 East of Lincoln. El. 5,609. Oiled.
Skalkaho Pass—Montana 38 east of Hamilton. El. 7,258. Not oiled. Not advised for trailers.

MONTANA ROADS OPEN FOR WINTER TRAVEL

Modern maintenance equipment enables Montana to keep all primary roads (shown in red) open during winter months except for very short periods during or immediately after a severe storm. Make local inquiry regarding conditions during storms. Carry chains and a shovel. Reduce speed. All main highway passes are kept open all winter. Passes that are closed to traffic for several months are: Beartooth Pass on U. S. 32, from 12 miles south of Red Lodge over Beartooth Plateau to Cooke City. Helena, Montana. Skalkaho Pass on Montana 38 between Anaconda and Hamilton. Pass on Montana 43 between Wisdom and junction with U.S. 93. Logan Pass in Glacier National Park, closed from about Oct. 15 to June 1. Yellowstone National Park roads subject to closure after Oct. 31, except for Gardiner-Cooke City road via Mammoth which remains open year around.



MAP OF THE MONTANA STATE HIGHWAY SYSTEM

The State Highway Commission is responsible for the construction and maintenance of the Federal Aid Highway System only, which is shown in red.

Legend for the highway map showing symbols for Divided Highways, Paved Roads, Improved Roads, Graded Roads, Dirt Roads, Trails or Proposed Roads, State Numbered Roads, U.S. Numbered Highways, Interstate Highways, Agricultural Experiment Stations, Composites, and Families. It also includes a scale bar and a note about the State Capital in Helena.

MONTANA INDEX
Population: 638,000 (1956 estimate)
Area: 146,131 sq. miles
1900 Census 981,000
COUNTIES 1950 Census
Table listing population and area for each of the 105 counties in Montana.

CITIES AND TOWNS
Table listing cities and towns in Montana, categorized by county and population. Includes entries like Helena, Billings, Great Falls, Missoula, and many smaller towns.