

TRAFFIC REGULATIONS AND SAFETY RULES

- 1. Montana speed limits: Daylight—reasonable and prudent speed; 55 miles per hour during the hours when lights are required, except where posted...
2. Vehicles entering main highways from side road or drive must yield right-of-way to vehicles traveling on main highways...
3. Vehicles must drive to right of center line at all times except when passing another car...
4. Proper signal must be given when passing another vehicle, changing direction, stopping or slowing down on the highway...
5. Only all warning signs, such as School Zone, Stop, Slow, Danger, Curve Yield Right-of-Way, and others.

TIPS FOR TRAILER OWNERS

Montana highway regulations provide that no combination of auto and trailer shall exceed 60 ft. in length, or 96 in. in total outside width, or 13 ft. 6 in. in height except with permit...
Principal mountain passes in Montana are: Lookout Pass—U. S. 10 at Montana-Idaho border. El. 4,726. Water stops.

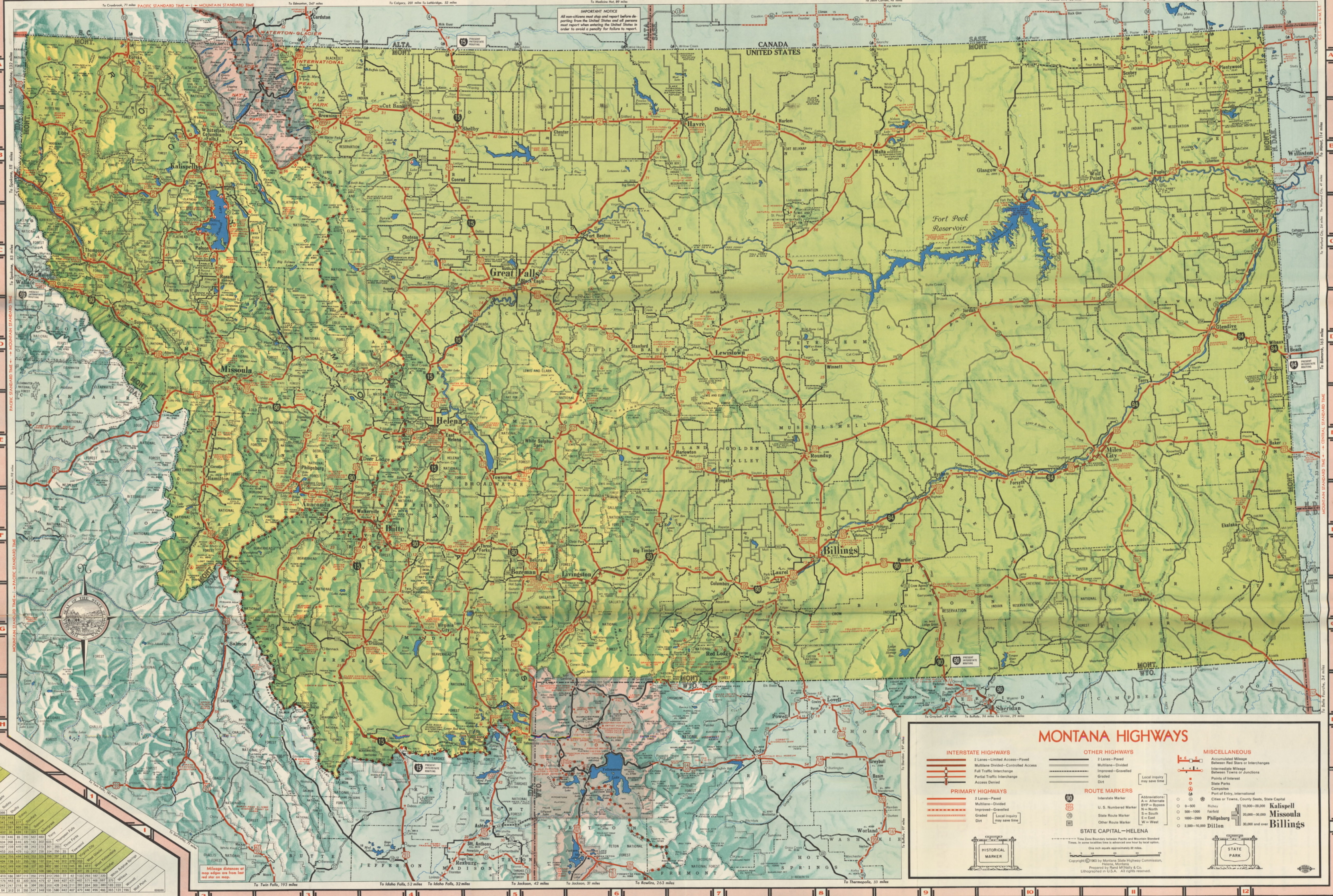
MONTANA ROAD OPEN FOR WINTER TRAVEL

Modern maintenance equipment enables Montana to keep all primary roads (shown in red) open during winter months except for very short periods during or immediately after a severe storm...
Beartooth Pass on U. S. 212, from 12 miles south of Red Lodge over Beartooth Skalkaho Pass on Montana 38 between Anaconda and Hamilton.

Montana Mileage Table. A grid showing distances between cities in Montana. Includes a legend for route types (Interstate, Primary, etc.) and a note: 'Mileage between two cities is determined by following the vertical column under one city and the horizontal column of the other.'

MONTANA INDEX

- Population: 682,000 (1962 Estimate)
Area: 147,138 sq. miles
Capital: Helena
COUNTIES 1960 census
CITIES AND TOWNS
1960 census or later estimates



MONTANA HIGHWAYS. Legend for highway types (Interstate, Primary, etc.), other highways (2 Lane-Paved, etc.), and miscellaneous symbols (Accumulated Mileage, etc.). Includes a 'STATE CAPITAL—HELENA' section with a historical marker and a 'KalisPELL Missoula Billings' section with a historical marker.