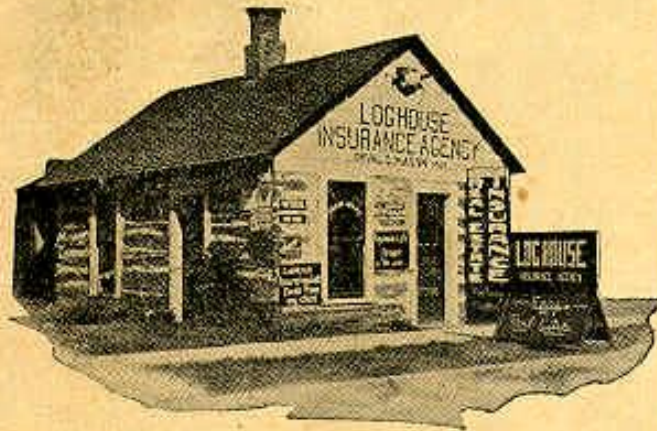


*If It Is a Farm, House
or Lot, We Have It*

*If It's Insurance,
We Write It*



HISTORY OF THE LOG HOUSE

The most unique real-estate and insurance office in America and one of the most historical landmarks of Glasgow, Montana is the old log house that is the home of the LOG HOUSE INSURANCE AGENCY. It was one of the first houses erected in the town before the Great Northern Railway was extended into Montana. It has sheltered many men prominent in the social and political as well as the business development of northern Montana. Here J. J. Hill was entertained while on an advance trip into the West. Buffalo Bill (Wm. Cody) lodged here while in this section of the state. On one of his visits in 1884 he killed a buffalo near the present site of Glasgow. Its head was carefully preserved by one of the old timers and is mounted on the front of this old log house. All of the weddings, parties and social functions of early pioneer days centered at this Log House when Glasgow was an infant cow town. If these walls of logs could speak they would unfold a wonderful tale of growth and development. For sentimental reasons we are making it our home and will greet you here with the same warmth extended a decade ago to an occasional visitor.

**Log House Insurance
Agency**

Orval E. Mason, Mgr. GLASGOW, MONT.

Magruder Motor Co.



Buick & Overland Cars, Goodyear Tires
Prompt and Expert Repairing of Every-
thing in Automobile Line Glasgow, Mont.

GLASGOW—139

Population 2059. Two large modern hotels and numerous garages. All modern conveniences. Headquarters for Roosevelt highway for Montana, general offices and information bureau at Chamber of Commerce rooms. The county seat of Valley county and was founded in 1887

Stop and Shop

at the

Lewis-Wedum Co.

Department Store

A Pleasant Place to Trade

Glasgow, Montana

Grossman Motor Company

Everything in Automobiles

Authorized **FORD** Dealer

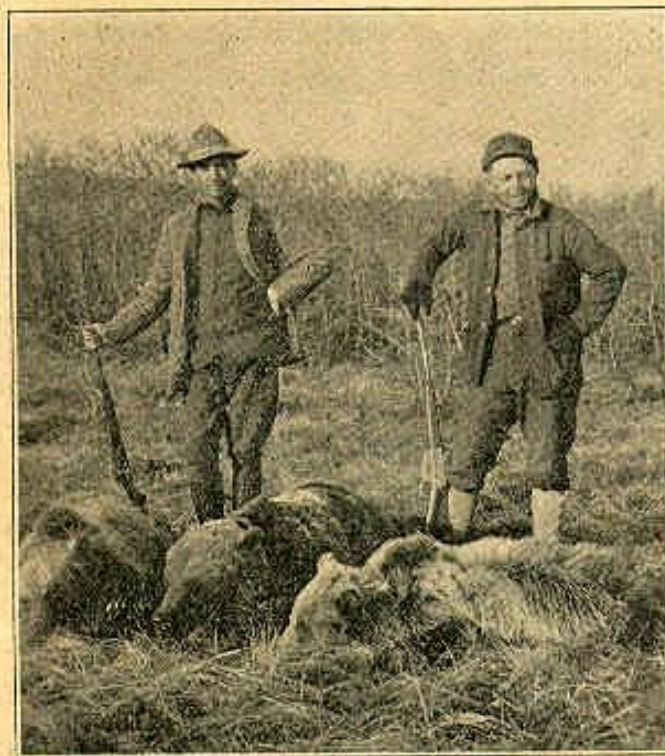
Prompt Service

Rest Rooms

Glasgow, Montana

with the coming of the Great Northern railway, and was named by the late James J. Hill, and is the largest city within a radius of 100 miles. The elevation at this point is 2038 feet. It is situated on the main line of the Great Northern railway about half way between Spokane and St. Paul. The Theodore Roosevelt Highway passes through Glasgow. Tourists routing their trips over this highway will find excellent hotel and garage service at this point. The Chamber of Commerce maintains a free highway information bureau, and free camping ground will be found here. Miles City can be reached from Glasgow via gasoline ferry at Lismas—a distance of 22 miles—and then by auto overland to Jordan, on to Miles City. A good road traverses the entire route. Glasgow has excellent schools, churches of seven denominations, beautiful homes, good business town. There are three newspapers and many fine mercantile establishments.

A recently completed tourists camp is one of the best in the state. Situated under natural shade trees, on the banks of the Milk river. It has a frame kitchen with all conveniences for cooking, city water and electric lights, wood and a shower bath—absolutely free to tourists.



Glasgow Hunters and Three of the Bears They Killed



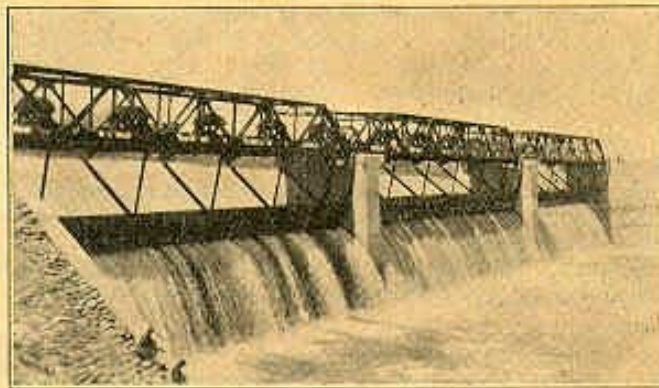
Beef in Valley County--Near Vandalia

TAMPICO—151

Population 50. Good camping sites along river on north side of road. One garage.

VANDALIA—156

Population 50. Good camping sites south of tracks. The site of one of the dams of the Milk River Irrigation project, the reservoir affords fishing in season; boats at the dam. Information from secretary of the Commercial club.



Vandalla Dam--Milk River Project

HINSDALE—166

Population 500. Two hotels and tourists camp site; garages; fishing. Possess some historical interest as old Indian battle ground. Full information from secretary of Chamber of Commerce.

Standard Garage

Dodge and Ford Service

Battery Service

O. W. OLSON, Prop.

Hinsdale, Montana

LANNON HOTEL

Home Cooked Meals Tourists a Specialty
Hinsdale, Montana

Phillips County

A county of fifty-four hundred square miles with Valley county on the east, Blaine county on the west, the Missouri river on the south and Canada on the north.

The northern part of the county is devoted almost entirely to dryland farming. In the center or along the Milk River Valley from east to west, are thousands of acres of rich irrigated farms, watered by the U. S. R. S. The southern part is devoted mainly to stock raising. Located in the east and center is the big Bowdoin oil dome on which two wells are in progress of drilling and this season will see considerable activity in oil development.

The Little Rocky mountains in the southwest corner of the county, is the first chance the tourist from the east has of spending a day in the mountains, enjoying the scenery and spending a day of relaxation after a long trip. Apart from the beauty, several gold mines are located in the hills.

The towns of the county from east to west are: Saco, Bowdoin, Malta and Dodson. Malta being the county seat. From all these cities maintained roads branch out to the towns across the line into Canada on the north, and to the Yellowstone Park, Mosby Oil Dome and the cities in the southern part of the State.

SACO—181

Population 500.—Windsor and Central hotels. Two garages, camping site in park in town, telephone and telegraph. Some fishing in Bowdoin reservoir; duck, prairie chickens and grouse in season. Information may be had from the Chamber of Commerce.

General Merchandise and Auto Accessories

Special Attention to Tourists

Established 1893

HARRY A. VAGG

The Pioneer Supply House

SACO, MONTANA

BOWDOIN—196

Population 500; surrounded by Lake Bowdoin, Nelson reservoir, Milk river and Beaver creek, making one of the finest places for duck hunting in the state; one the apex of the Bowdoin oil dome. The U. S. government reports this to be the largest undeveloped oil fields in the United States. On the Milk River Irrigation project, our soil being especially adapted to alfalfa, sugar beets and general farming. We have good schools and churches, stores, etc.; two garages, two oil stations and camping grounds for tourists. Any inquiries will be gladly answered by our Commercial club.

Bowdoin Garage

NELSON & BARTRON

Garage, Livery Supplies Repairing

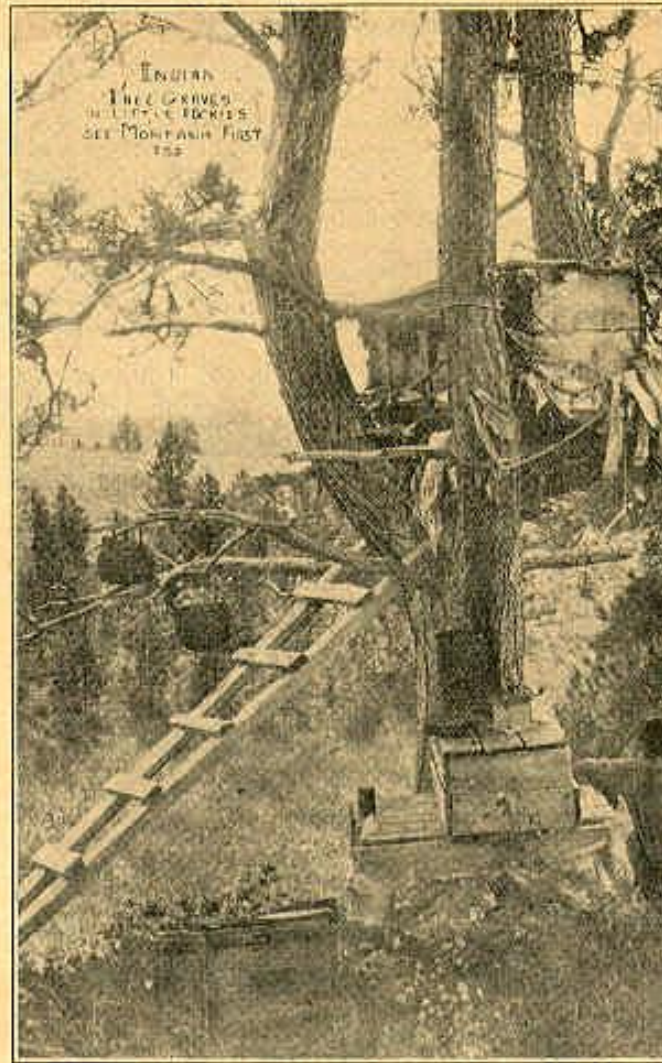
Goodyear Tires

Bowdoin

-

-

Montana



Side Trip From Malta or Harlem

MALTA—212

Population 1800. Hotels, Great Northern, Fifth Avenue, Little Rockies. Tributary lakes are Bowdoin and Nelson reservoir, furnishing fishing, bathing, boating and hunting. Tourists park and camp sites, three modern garages. For further information T. J. Larson, secretary of Commercial club. Offers a side trip through the Little Rockies located 40 miles southwest of Malta. The scenery in these mountains is unsurpassed. This road passes through the frontier towns of Landucky and Zortman with a chance to view two of the important gold mines of the west, thence through the Mission Canyon which contains some of the grandest natural scenery of the state, thence through the Fort Belknap Indian reservation northward to Harlem which is located on the Roosevelt Highway.

Smith's Sugar Bowl

Bakery in Connection

Tourists, Try Our Special Hot Lunches

Short Orders at All Hours

Candy and Soft Drinks

The Only Place in Town for Waffles

On T. R. Highway

MALTA, MONTANA

Phone 64

Livery

Moore Motor Co.

*Automobile Dealers***F O R D***The Universal Car*

Our Repair Department Is One of
the Best

We Put the Art in Start

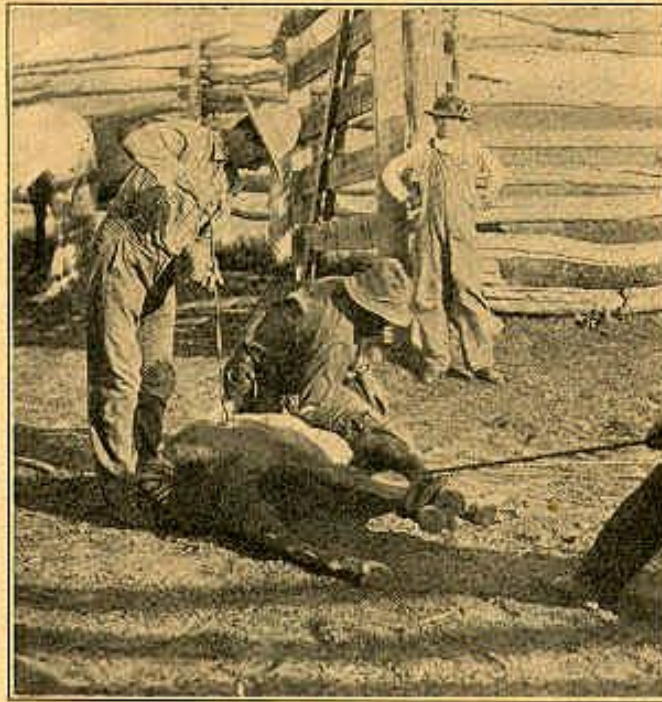
Malta - Montana

*Buick Cars
Dodge Brothers
Service*

STANDARD GARAGE

SOLBERG & NYBO

Malta - Montana



Branding Near Malta

Great Northern Hotel

SKLOWER BROS., Proprietors

*A Complete Modern Hotel
With Every Convenience*

Large Sample Rooms Fountain Room

Malta, Montana

DODSON—230

Population 400. "Gateway" to the Little Rocky mountains; hotel and long distance telephone. Camp on river and in park in town. Good garages. For further information, Commercial club, J. D. Jones, secretary.

Autos Repaired and Fords Fixed Auto Livery Day and Night
All Work Guaranteed

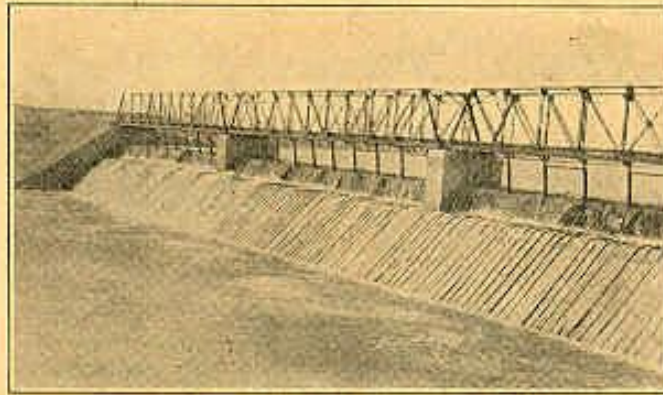
Warzaha & Ness Garage

Buick and and Dodge Cars
United States and Mason Tires

All Kinds of Accessories

Edison Mazda Lamps
and Fixtures

1 1-2 Block South Highway
Dodson, Montana



Milk River Project Dam at Dodson

Blaine County

General Description—Blaine county lies in the northern part of Montana, about midway across the state, east and west. The Canadian line is its northern boundary and the Missouri river its southern. Physically and industrially, the county is divided into two sections. The plains or agricultural section lies north of township 30 and is wholly devoted to grain growing and farming and comprises about two-thirds the total area of the county. The mountainous or stock raising section occupies the southern part of the county. The Milk River valley, which crosses the county east and west, is included in the Milk River project of the reclamation service, and when developed is destined to be one of the best agricultural districts in the state. The Fort Belknap Indian reservation occupies the southwestern part of the county. Date of creation, February 29, 1912; land area, 4,219 square miles; county seat, Chinook; altitude county seat, 2,407; growing season, 118-127 days; population, 1920, 9,057; population county seat, 1920, 1,217.

Savoy Garage

Savoy, Montana

Call on us for repair work, gasoline,
oils, etc. Ford repairs in stock
at all times.

Special Attention to Tourists

One Price to All

WM. SPONENBURGH, Prop.

SAVOY—245

Population 100. Hotel Savoy; two camp sites adjoining, one northwest and one southwest. Near Indian reservation and good camping, fishing and hunting in season, in Little Rockies. Inquire of G. W. Everson, secretary Commercial club.



Montana Wheat Farming

General Merchandise

Tourists' Headquarters

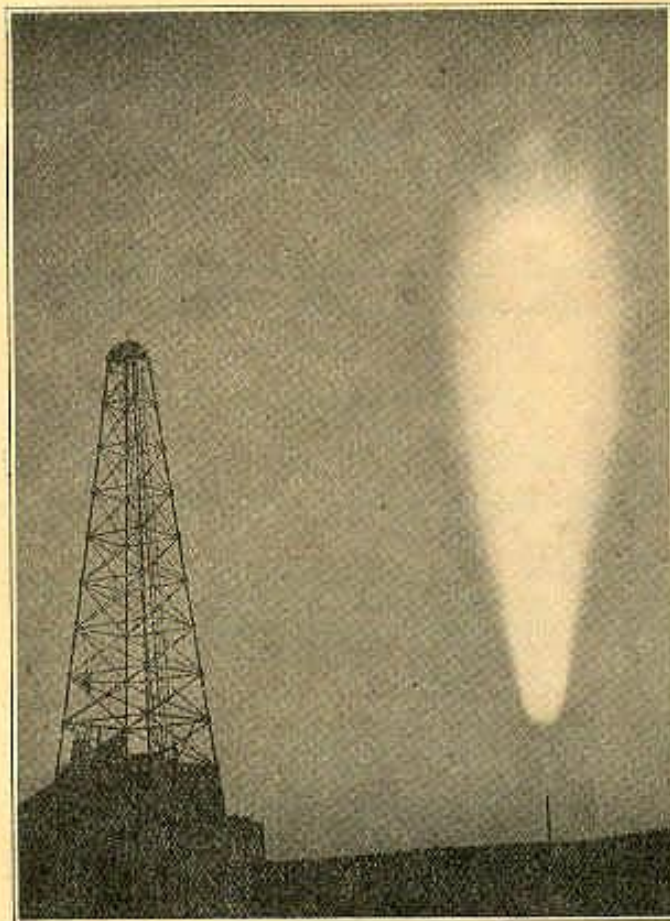
H. C. PLATT

Savoy, Montana

HARLEM—256

Population 800. Free camp site two blocks out. Three garages, one fire proof. To the south of Harlem lie the beautiful Little Rocky mountains which are noted for their natural rugged scenery that is not surpassed anywhere. This is a very popular outing place in the summer time and all during the summer months is fairly infested with people from the nearby towns and from distant cities who go there to spend a week or so camping out and living next to nature. Good roads lead from Harlem to this popular outing place.

Harlem is the gateway to the Fort Belknap Indian reservation. About 13,000 acres of land tributary to Harlem are under irrigation in the valley which is noted for its famous blue joint hay and alfalfa. This section has furnished considerable feed for the drouth stricken sections of the state the past three years.



Natural Gas Supply of City of Havre

Reed Ekegren
and
Company

Harlem, Montana



Authorized
FORD
Sales and
Service

Goodyear Tire and Service Station
Sell Best Grades Oil and Gasoline
Have Most Expert Mechanics
That Money Can Produce

Call and See Us On Your Way
Through

STANDARD GARAGE

Dolvin Brothers

Harlem, Montana

Chevrolet Sales and Service
Station

United States and Goodrich
Tires

Willard Battery Service
Station

General Line of Autos

Accessories and Repairs

Batteries and Magnetos Charged
and Repaired

Generators and Starters

All Kinds of Electric Work

*A Square Deal Is
Assured to Tourists*

CHINOOK—278

Population 1200. County seat of Blaine county. Two hotels, Chinook and Montana. Free camp on Fair grounds in town. Two garages. Near Indian battle fields, Rocky mountains and large irrigation projects. Hunting big game near; fishing for trout and pike. Inquire of C. R. Hauke, secretary Chamber of Commerce.

Montana Meat Market

Herman Streit, Proprietor

Fresh and Salt Meats, Lard, Fish
and Poultry

Sausages of All Kinds

Chinook, Montana

THE MONTANA HOTEL

MARSH & O'NEAL, Props.

Special Attention to Tourists

CHINOOK, MONTANA

Richards & Stam

Chinook, Montana

Authorized Ford Sales and Service

Goodyear Tires

Mobil oils

Vesta Battery Service Station

Genuine Ford Parts

“The Kind of a Garage You Like
To Do Business With”

The Montana Hotel

MARSH & O'NEAL, Props.

Special Attention to
Tourists

Chinook - - - Montana

Bogy Mercantile Co.

Groceries Dry Goods
Hardware Mens Furnishings
Implements Ladies Furnishings
Furniture Shoes

Chinook, Montana

LOHMAN—287

At the mouth of Clear Creek, the largest creek flowing out of the Bearpaw mountains. This town boasts of an excellent supply of pure wholesome drinking water and also offers good camping grounds to the tourist, with excellent fishing at the Belknap dam, less than a mile from the town.

Hill County

General Description—Hill county lies in the center of the northern tier of counties with its northern boundary line defining the Canadian boundary. Hill county is practically square, about sixty miles in length and width, though the southeastern corner is irregular in shape, where it extends into the Bearpaw Mountains. This southeastern section is the location of the Rocky Boy Indian Agency. The state maintains the Northern Montana Agricultural Experiment Station at Fort Assiniboine, near the county seat. Date of creation, February 28, 1912; land area, 2,844 square miles; county seat, Havre; alti-



Palatial Log House at Vandalia

tude county seat, 2,480 feet; growing season, 101-126 days; population county, 1920, 13,958; population County seat, 1920, 5,429.

HAVRE—303

Population 6000. The county seat of Hill county, located on the banks of the Milk River and at the foot of the Bear Paw mountains. It has a good substantial business and wholesale section, and a beautiful residence district. It is a general division point of the Great Northern Railway, while its accompanying machine shops, round-houses and car repair shops, and the large pay roll is one of the assets of the city. There are several natural gas wells, and coal mines lie adjacent to the city.

The Bear Paws and their foot hills afford wonderful ranch lands where large numbers of sheep and cattle are raised. Havre is also in the heart of a rich agricultural section which yields good crops of wheat, barley, oats and flax. The forage crops consist principally of fodder corn, alfalfa and native grass. Garden truck, potatoes and all root crops do exceedingly well in this soil.

The numerous trout streams in the Bear Paws afford the fisherman and the pleasure seeker opportunity for recreation, and the many lakes abound with fowl for goose and duck hunting.

There are many opportunities in our city for business enterprises, such as ice plants, pottery works (we have both the clay and sand), sash and door factory, cold storage plant, etc. It is an ideal distributing point for wholesale houses with the main line of the Great Northern east and west, and the Montana Central to the south.

The Secretary of the Havre Development Association at the City Hall, or the Secretary of the Havre Highline Unit of the Northern Montana Development Association at the Farmers State Bank, will be glad to furnish additional information.

The tourist will find good hotel accommodations, good camping grounds, and excellent water.

Hotel Havre

The First Hotel Coming Into
Havre from the East
or West on the T.
R. Highway



Havre - - *Montana*

Buttrey's

*The Biggest Department
Store in Montana*



EVERYTHING
FOR THE
TOURIST

Buy It at Buttrey's

Havre - - Montana

*Nothing So
Appropriate
Or Nice*

*as a gift as a box
of our*

*High Grade
Quality Candy*

*Olympia
Havre, Montana*



G. A. Hulfish Company

7th Avenue and First Street

Havre, Mont.

Closest Store to Tourist Camp

Groceries, Meats, Vegetables
Auto Accessories, Gasoline, Oils
Hardware and Furniture

The Grand Hotel

T. F. RUSSELL, Proprietor

Hot and Cold Water and Telephone
in Each Room

Rooms With and Without Bath

Havre - - - - Montana

Headquarters for Tourists and Commercial Travelers

Try a Meal At

The Grill Cafe

Havre, Montana

Moderate Prices

Best Service

Authorized FORD Agency

Fire Proof Garage

Havre Commercial Co.

Havre - - - - Montana

G. J. Pedersen, President and Manager

Pioneer Meat Market

Established 1900

J. G. Pedersen & Co., Props.

Wholesale and Retail Meats

Phone 27

Havre - - - - Montana

Stop at The

Clack Service Station

First Street and Fifth Avenue

For Tires and Accessories
Heccolene Oils
and Hi-Power Gasoline

*Best Lubricants--More Power--More Pep
Free Air Free Water Quick Service*

H. Earl Clack Co., Havre, Montana

Gilford Auto Co.

Tires, Accessories and Welding
Ford Service Station
General Repairing

Special Attention to Tourists

Gilford, Montana

GILFORD—324

Population 250. Palace, Guilford and Windsor hotels and free camp site on Sage creek. Telephone and telegraph. First class garage. Small game in season. Bathing in reservoir. Information from secretary Commercial club.

HINGHAM—342

Population 300. Two hotels; one cafe. Camping site adjoining town. Two garages. Telephone. Information from B. J. Schwoeferman.

IVERNESS—354

Population 200. Hotel Iverness. Telephone. Camping site in town. Two garages. Information from Frank J. Moog, secretary Commercial club.

JOPLIN—358

Population 500. Three hotels, one good cafe; camping on public square in center of town. One garage. Information from O. P. Roe.

Liberty County

General Description—Liberty county is located in the north central portion of Montana, bounded on the north by the Canadian province of Alberta. It is 60 miles long north and south and 24 miles wide east and west. Date of creation, February 11, 1920; land area, 1,458 square miles; county seat, Chester; altitude county seat, 3,132; growing season, 101 days.

CHESTER—368

Population 500. Grand and Chester hotels. Telephone. No camp. Garage. Sweet Grass hills 20 miles north. Information from J. O. Berglin, secretary Commercial club.

LOTHAIR—381

Population 150. Hotel Lothair. No camp. No garage.

General Merchandise

Dry Goods, Groceries, Drugs

Gasoline

We Sell Everything and Cater to the Tourist Trade

Chester Trading Co.

Next Door to Postoffice

CHESTER, MONT.

Toole County

General Description—Toole county lies in northern Montana, its northern boundary being the Canadian line. It is exclusively a stock raising and agricultural county and by far the larger portion of its acreage is tillable. Of great importance to the future of the county is a proposed irrigation district, embracing between 200,000 and 300,000 acres, that has been launched by the land owners and which engineers pronounce feasible. It is now being put into shape for construction. Date of creation, May 7, 1914; land area, 1,949 square miles; county seat, Shelby; altitude county seat, 3,286 feet; population county, 1920, 3,724; population county seat, 1920, 537; growing season, 93-106 days.

GALATA—388

Population 350. Two hotels, Galata and Flage; two garages. Trout fishing in Sweet Grass hills; Marias river to south. Information from Galata Commercial club.

Galata Drug Co.

Dr. A. Folsom, Proprietor

Drugs, Camera Supplies, Soft
Drinks and Free Drink-
ing Water

Galata, Montana

Wood's Garage

Repairing and Accessories
Special Attention to
Tourists

ROYAL S. WOOD, Proprietor

Across Street from Hotel GALATA, MONTANA

DEVON—394

Population 250. Hotel Devon; one garage, three oil stations. Information of L. M. Lerberg & Co.

DUNKIRK—403

Population 200. No hotel reported. Fine camp in town and on Marias river five miles south; telephone connection. Fishing, boating and duck shooting on river. Garage. Information from Dunkirk State Bank.

Fresh Country Produce

and Good Things to Eat
at Farmer Prices

J. B. EWING

West End Town

Dunkirk, Mont.

SHELBY—413

County seat of Toole County. Hotels, garages and camp sites. In the heart of the Sweet Grass arch and oil development. Inquire of Commercial club.

Shelby Mercantile Company

The Big Department Store

SHELBY, MONTANA

The Place to Re-Stock on All
Tourist Supplies

Everything You Need for the
Convenience of Your Trip

Special Attention Given to
Tourists and Their Needs

Shelby Mercantile Company

*100 Miles West
Havre*

*75 Miles East Glacier
National Park*

ETHRIDGE—426

Population 500. Two stores and filling station.

Glacier County

General Description—Glacier county, lying in north-western Montana, with the Canadian line as its northern boundary, and the eastern edge of the Glacier National Park as its western boundary, was created almost wholly out of the old Blackfeet Indian reservation. It is well watered, rolling region, the northern part of which is ideally adapted to live stock raising. The southern part of the county enjoys a longer season, there is considerable irrigated land there, and agriculture is developing. Date of creation, April 1, 1919; land area, 1,309 square miles; county seat, Cut Bank; altitude county seat, 3,698 feet; growing season, 77-102 days.

Ford Cars and Trucks

Fordson Tractors

E. C. CLAPPER

General Garage Work

Battery and Vulcanizing Departments in Connection

Cut Bank

Montana

CUT BANK—440

Population 800. County seat Glacier county; G. N. division. First town of Flathead reservoir. Three hotels, two garages; camp along creek; inquire of Commercial club.

BROWNING—477

Population 1000. New England and Haggerty hotels. Camp site west of city. Three garages. Information from H. W. Judson.

This is the junction of the Y. G. Bee Line, Custer Hiway and Roosevelt Highway, and is at the gateway to Glacier Park. There is good fishing and boating and large and small game hunting. This is a good point from which to arrange for side trips and the point at which connection is made for the Yellowstone park and points south over the Parks to Parks and other roads.

Make The
New England Hotel
 Browning, Mont.

Your Last Stop Before Entering
 Glacier Park

Three Stories

All Outside Comfortable Rooms

Browning Mercantile Co.

Auto Tires, Gasoline, Mobile Oils
 Auto Accessories and
 General Merchandise

Located South Side Square BROWNING, MONT.

Browning Saddlery Co. Inc.

Sporting Goods, Campers Outfits
 Everything in Leather
 and Canvas
 Auto Accessories

Browning - - Montana

*Broadwater-Pipin Trading
Company, Inc.*

General Merchandise

Everthing to Eat and Wear

Hunting and Fishing Supplies

BROWNING - - - MONTANA

Retreading a Specialty

Gas and Oil

Montana Tire & Vulcanizing Co.

O. C. BOGGS, Manager

High Grade Tires and Tubes
Blowouts Never Too Large to Repair

Browning, Mont.

GLACIER PARK STATION—500

Population about 300. One first class and two second class hotels. Camp site near town. Two garages. Entrance to Glacier National Park, through the Roosevelt highway is not completed; if desired arrangements can be easily made for shipping cars to Belton, the western park entrance.

We also have a free camp site, where a fire place, fuel, spring water, shade and toilet facilities are provided. This is located just across the new bridge on the Roosevelt highway, south of the Great Northern station.

THEODORE R. HUBBACK

Where the whistler shrills in triumph, and the big horn
dreams in peace,
Where the brown bear sulks to cover up where silence
holds the lease
Where the land is as God left it, nor has known the
tread of man,
There's a treasure ledge awaiting—go and find it if
you can. —Pat O'Cotter.

FAIR ENOUGH

The Galveston News rises to remark:

We may be wrong, but our position is that for \$9 the garage mechanic should have done something to our car besides grease the cushions.



Historical Cabin On the Trail



Courtesy New York Tribune

"The Long, Long Trail"