

*See America First*

---

*Glacier Park  
Trading  
Co.*



*Tourists' Supplies  
General Merchandise  
Indian Curios*

Will Be Glad to See You Whether  
You Buy or Not

*J. F. LINDHE, Manager*

Glacier Park - Montana

## USEFUL HINTS TO MOTORISTS

This park is a National playground. Observance of the following rules and suggestions will make your visit pleasant and add to the pleasure of others.

Automobiles and motorcycles will be permitted on all of the park roads between the hours of 6:30 a. m. and 10:30 p. m. The park roads are divided in two systems, those west of the Continental Divide are known as the West Side Road System and those east of the Divide are known as the East Side Road System. The East Side Road System includes those sections of the road between Glacier Park Hotel, St. Mary Chalet and Many Glacier Hotel, which lie within the limits of the Blackfeet Indian Reservation.

The entrance for automobiles and motorcycles on the East Side Road System are \$2.50 and \$1.00 respectively.

The entrance fee for automobiles on the West Side Road System is \$.50; no charge for motorcycles.

All fees are payable in cash only and at points of entrance.

Careful driving is required at all times.

The speed limit is 8 miles per hour ascending and descending grades. On straight stretches of road a speed of 25 miles is allowed.

Horns should be sounded when approaching curves, vehicles, pedestrians, or saddle animals.

Muffler cutouts must be closed when passing horses, hotels, or camps.

Do not drive in the ruts of the road. Observance of this suggestion will do much toward keeping the roads smooth and in good condition and may save you a broken spring.

Teams have right-of-way at all times and in all places. If horses appear nervous, automobiles will take the outer edge of the road and engine will be stopped until horses have passed.

Be careful of your camp fires. Thoroughly extinguish them before leaving, with water or covering with earth.

Camp and park your cars only in designated localities.

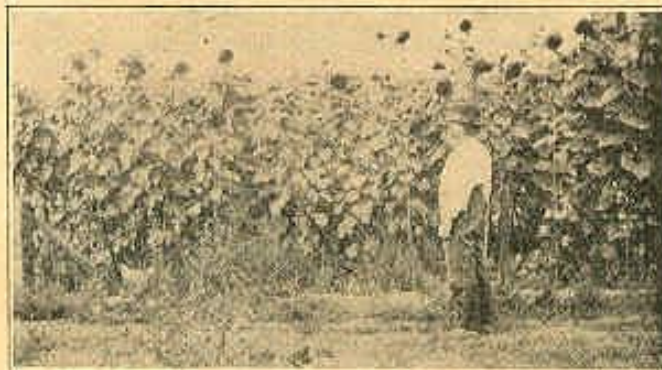
For the protection of yourself and other visitors, your car must be equipped with good brakes, horn and lights.

**THESE ARE NOT THE REGULATIONS**—Which may be obtained from the rangers at the entrances, or from the Superintendent, copies of the rules and regulations for the government of the park and motor vehicle traffic therein. These rules and regulations also contain general information regarding the park.

---

### BELTON—558

Population 30. Belton Hotel; Belton Chalets. Oil station. Western entrance to Glacier Park. Summer hotel on Lake McDonald.



*Sunflowers in Valley County*

## Flathead County

Flathead county is just another way of spelling opportunity. Located in the broad valley to the west of the main range of the Rocky Mountains it has a climate that is unsurpassed. Its mild winters, cool summers, with an almost total absence of wind makes it an ideal place of residence. But climate is not all. Its broad, fertile valley is a garden spot, dotted with highly productive farms, with a price on farm land that is a surprise to the people from the highly priced farming regions of the east. And in it are large amounts of land still but little improved that are a phenomenal inducement to the home seeker. Its great areas of forested land makes it a great timber and lumber producing region. Its principal cities Kalispell, Whitefish, Columbia Falls and Polson still offer opportunities in various lines. Its inspiring mountains and scores of beautiful lakes offer to the tourist everything in the way of hunting and fishing. The county is a veritable hunter's and fisherman's paradise. The greater part of Glacier National Park was carved from Flathead county and the beauty of the Park is divided from the beauty of the whole county by but an arbitrary line. Its trunk highways are numbered among the best in the State and for most of the year are real boulevards. Its citizenship is prosperous and progressive. Its prosperous cities, fertile farms, timber resources, its highways, its lakes and mountains make Flathead county the garden spot of Montana. Date of creation, March 1, 1893; land area, 6,380 square miles; county seat, Kalispell; altitude county seat, 2,946; population county, 1920, 21,705; population county seat, 1920, 5,147; growing season, 71-149 days.

### COLUMBIA FALLS—576

Population 700. Hotels Gaylord and Columbian. The "Gateway of the Flathead valley." This city has prepared an ideal camping site at the edge of the city and has installed city water, the purest in the world and as cold as ice all through the summer, to which the visitors are welcome. Fuel for camp fires is provided free of charge and there are toilets and other accommodations provided.

Columbia Falls is the starting point for several splendid side trips, including one up the North Fork river, over a highway built by the government and county, costing over \$100,000, and which taps the upper section of Glacier National Park, recognized as the most scenic portion of the park. This trip takes the traveler through forests inhabited with deer, moose, and bear, while trout fishing is unsurpassed. This road extends to the Canadian line, and also permits one to cross the river at a point about 36 miles from Columbia Falls and return down the east side of the river and into Lake McDonald and Belton, making a splendid day's trip.

Another side trip in one to Swan Lake, over a splendid government and county built highway. Another trip includes one around Flathead lake, the largest fresh water lake in the United States. In returning, this route takes one through Kalispell, a very pretty and modern city of 5,000 population, located at the end of a branch line of the Great Northern out of Columbia Falls. Garages and usual accommodations. Inquire of Chamber of Commerce.



*On the Milk South of Coberg*

Zorzie Bros.

Michelin Tires

## *Western Retread Works*

Dry Cure Retreading and  
Vulcanizing

*Four Anti-Skid Designs*

Columbia Falls - Montana

## *Columbia Falls*

"At the Foot of the Rockies"

Is the Gateway to the

**BEST**

*Hunting and Fishing*

*In Montana*

*And We Are Headquarters for the Best and Most  
Complete Line of*

**SPORTING GOODS**

*and*

*Camp Equipment*

*In Northwestern Montana*

**Carr-Elsethagen Co.**  
*The Big Store*

## *Hustler Mercantile Co.*

One of Our Specialties Is Pleasing  
the Tourist Trade and Making Them  
Feel at Home and Satisfied

*We Have a General Line of Merchandise  
Goodrich and Ajax Tires, Gasoline, Oils*

Columbia Falls - - Montana

## *People's Meat Market*

All Kinds of Meats  
Special Attention to Tourists

*West Side Square*

Columbia Falls - - Montana

## *James A. Talbot's Bank*



*Columbia Falls - Montana*

## *The Park Mercantile Co.*

Distributors of

All Staple and Fancy groceries, green stuffs and  
Lunch goods, gas and oils. Also a select line of  
Outing clothing, Gent's furnishings, etc. Call and  
let us give you first hand, down to the minute infor-  
mation, on many interesting Fishing and Camping  
trips, to make from Columbia Falls. Big modern  
Tourists' camp affords you permanent camp as long  
as you care to stay—all free.

*Columbia Falls, Montana*



*In the Shadow of the Pines*

#### WHITEFISH—585

Population 5000. The largest city on the Roosevelt highway between Havre, Montana and Spokane, Washington. It is a thoroughly modern city and it has been characterized by R. G. Dunn's representative as the liveliest town in the State of Montana. It has four churches, four school buildings, three hotels, three garages, two banks, two movie-theatres, dozens of stores, in fact, almost all lines of business are represented. It is a terminal division point on the main line of the Great Northern Railway and the monthly payroll runs into hundreds of thousands of dollars. The Boosters club at Whitefish are building a new tourists camp building on camping grounds 24x24, two toilets and two showers, kitchen modernly equipped and a fine dining room.

Whitefish is built at the lower end of Whitefish lake. This lake, seven miles in length, is almost unparalleled in beauty and furnishes the finest of boating and fishing facilities. Lazy creek and Swift creek flowing into the upper end of the lake are famous trout streams and easily accessible to the fishermen. Within a few minutes walk of Whitefish lake is a smaller body of water known as Beaver lake. This lake is about three miles in length and abounds in Eastern brook trout. The enthusiasm of the fishermen on his return from Beaver lake is a matter of unusual inspiration.

There are dozens and dozens of lakes and streams



*Bathing Almost Within the City Limits of Whitefish*

You Will Find

AT THE

**PIONEER**

*A Complete Line of*

*General Merchandise*

*Groceries      Dry Goods*

*Gents Furnishings*

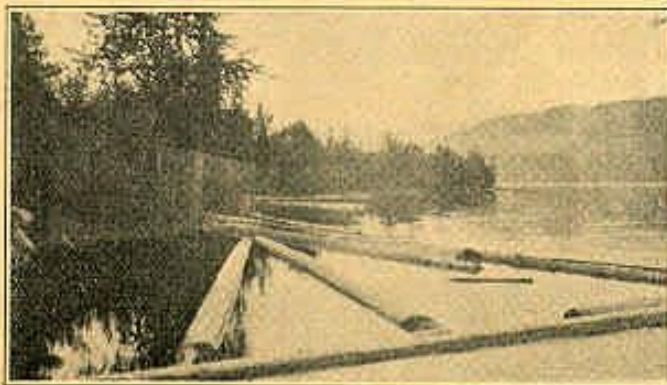
*Shoes*

*Hay and Grain      Tinware*

*Crockery*

*Pioneer Mercantile Co.*

*Whitefish, Mont.*



*Log Boom Near Mill--Whitefish*

# Hotel Hori

Whitefish, Montana



Homelike and Comfortable  
Modern in Every Detail

Excellent Cafe in  
Connection

---

*In the Heart of the Moun-  
tains and Lakes of  
Northeastern Montana*

---

The Hotel Hori and Cafe  
Is the Kind of Place You  
Will Come Back To

---

*Modern Bakery That Caters  
to Tourist Needs*

---

H. M. HORI, Proprietor

in the vicinity of Whitefish that furnish the best of fishing but space will permit the mentioning of only a few. To those desiring a few days outing, a trip to the Upper Whitefish lake is recommended. This lake is twenty miles north of Whitefish and the trip is almost entirely through unbroken forests. The lake is literally full of trout and no particular skill is required to catch them. It is simply a matter of casting the line and the basket is soon filled. Another outing of the same character is found in a trip to Talley lake, some eighteen miles west of the city. This trip can be made easily by auto in an hour's time. Talley lake is a beauty spot almost beyond description and no fisherman ever made the trip unrewarded. Some twelve or fifteen miles northwest of Whitefish and right along the Roosevelt Highway are the Stillwater lakes—a chain of half a dozen lakes, all famous fishing places. No finer camping spot on earth can be found than along these lakes and the tourist will find it difficult to fold his tent and continue on his journey.

The forests and mountains around Whitefish abound in game of many kinds. Those wishing to hunt deer or feathered game may stay in the city each night and simply go out in the day time. For bear and elk and other large game one may drive with his auto well out into the hunting grounds and for longer trips pack horses and guides may be secured in the city at reasonable rates.

## *Public Drug Co.*

*Whitefish, Montana*

Eastman Kodaks and Supplies

Columbia Graphonolas and  
Records

Ice Cream Soda That's Right

*"You Can Get It at the Public Drug"*

### BOIL THE WATER

The ordinary method of purifying water is by heating. Boiling a water kills the typhoid bacilli. The water should be boiled for at least ten minutes and then set aside cool.

*C. B. Graves*

*M. E. Mahar*

## Peoples Cash Market

Beef, Pork, Mutton, All Kinds  
Smoked and Salt Meats

*Fish and Game in Season*

*SPECIAL ATTENTION TO TOURISTS*

Whitefish - - - Montana

# Ford

The one sign along  
the highway that  
means most to the  
tourist for *Service*  
and *Satisfaction* is  
the sign of

## *The Ford Garage*

McCarty Motor  
Co.

Whitefish - - Montana

# *The* NEW CADILLAC



*Whitefish, Montana*

J. J. CREMANS, Proprietor

---

*New Modern*  
*Comfortable*

In short, it's the kind  
of a place that you'd  
like to come back to.

---

Plan to Stay a Week and  
Take in the Lakes and  
Mountains

**STRYKER—617**

Population 40. Hotel and oil station. Good fishing in numerous small lakes in neighborhood.



*A Real Fishing Country—Stryker Lake*



*Oh Boy! An Hours' Catch at Stryker Lake.*

## *OLNEY HOTEL*

Meals for Tourists a Specialty

*General Store*

Hunting and Fishing Supplies

Auto Accessories

GUY A. WHITE, Prop.

Olney - Montana

### Lincoln County

**General Description**—The Kooteni is Montana's largest river flowing down from the snow-capped peaks of the Canadian Rockies, it cuts through Lincoln county and the entire drainage of the county flows into the Kootenai in the form of scores of creeks and rivers that abound in game fish and provide water in greatest abundance for irrigation and stock raising purposes.

Tremendous water falls that need only to be harnessed to turn the industrial wheels of an empire; great deposits of lead, copper, silver, gold tungsten, mica and almost every other metal of commerce are within the borders of this great county. The county's highways include hundreds of miles of laterals in addition to this main road.

Lincoln county is recognized by all as the hunter's paradise. It has more big game and a larger variety than any other similar area in the nation, excepting none. Deer are very plentiful and easy to hunt. Every year a number of mountain lions are killed and captured by hunters in the county and many are sold to zoos. Mountain sheep and goats, lynx, coyotes, a few elk and some caribou are found in the county. We invite you to this county of counties of the great Treasure State.

Date of creation, July 1, 1909; land area, 3,600 square miles; county seat, Libby; altitude county seat, 2,053 feet; population, 1920, 7,797; population county seat, 1920, 1,522; growing season, 46-97 days.

## *FORTINE HOTEL*

Meals for Tourists a Specialty

*Fortine, Montana*

### FORTINE—628

Population 200. Three hotels and two garages; oil station. Fine camping places along the road which skirts Dickey lake, one of the finest in the state. Several lakes near and abundant trout fishing; game in season. Inquire of S. J. Dahlberg.

### EUREKA—640

Population 1500. Two hotels; two garages and three oil stations. Numerous camp sites and splendid fishing. Inquire of C. E. Davis, secretary of Commercial club. This is the hub of the famous Tobacco valley which will soon reach the top notch among the dairying and diversified farming sections of the west. A big irrigation system waters thousands of acres; our lumbering industries are more active than ever; a good roads program inaugurated within the past two years calls for the construction this

Fishing and  
Hunting Supplies

---

*General Merchandise*  
*Auto Accessories*  
*Full Line Drugs*  
*Meats*

---

P. V. Klinke

Fortine - - Montana

*Fortine's*  
*Popular Store*

MIKE PETERY, Prop.

Everything in  
Merchandise

*Fortine, Montana*



*Around Fortine and Eureka*

year of a road through the county, forming a link in the great Theodore Roosevelt International highway, uniting this section with all transcontinental roads, making all parts of our wonderful valley accessible, enhancing the value of farm and city property, and bringing into more intimate relationship the several trading centers.



*Lambing Time in the Mountains*

## *Eureka Garage*

*J. M. GAREY, Proprietor*

Authorized Sales and Service  
Ford Agency. Battery Ser-  
vice. Vulcanizing.

Racine Tires    Monogram Oils

*Eureka, Montana*

## J. H. SAILING

*Druggist*

Soda Fountain

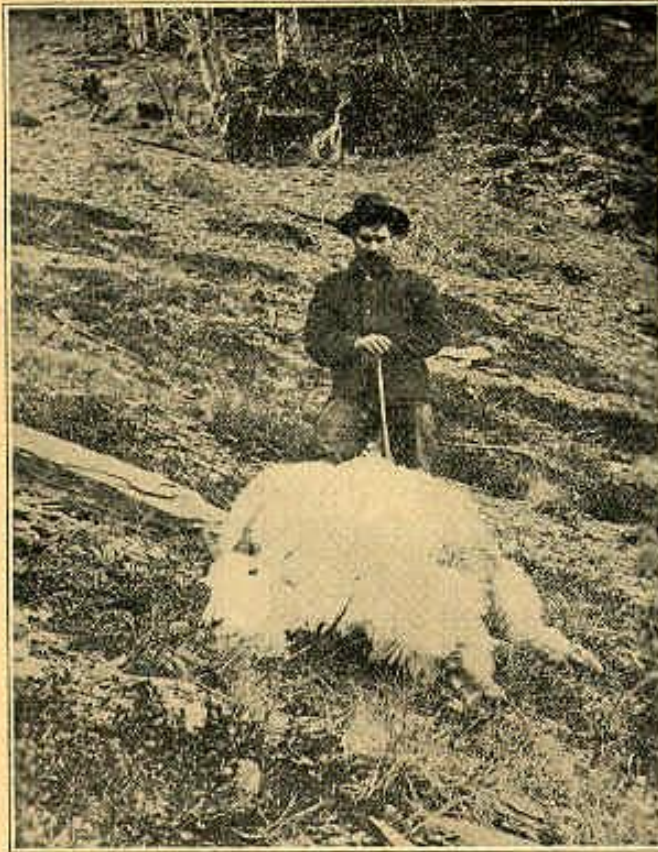
*The Rexall Store*    Eureka Mont.

## *National Hotel*

Headquarters for Commercial Men  
and Tourists

*Pat Cunningham, Proprietor*

*Eureka - Montana*



*Big Game Country Near Eureka.*

## *Dodge and Buick Agency*

Oxy-Acetylene Welding  
Portable Outfit for Outside Work  
U. S. and Goodyear Tires

## **O. K. Garage**

*J. O. Parker, Prop.*

*EUREKA, MONT.*

Groceries

Tourists' Supplies

Hardware

## *Eureka Commercial Co.*

*at*

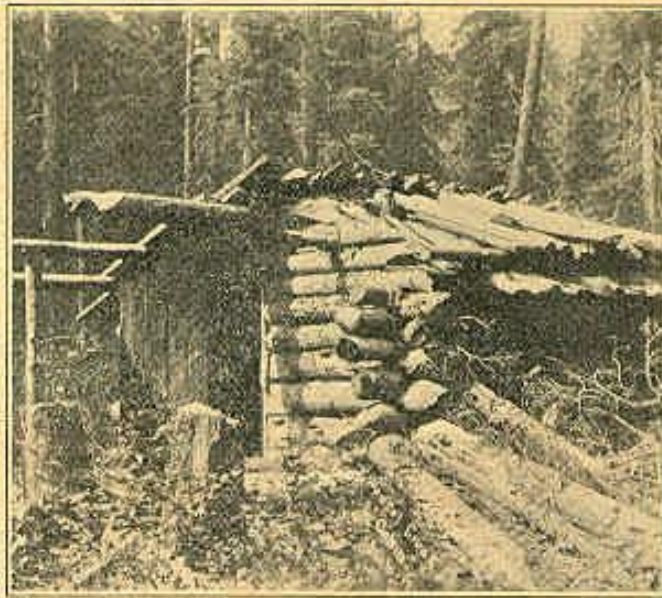
EUREKA, MONTANA

*Courtesy      Best Service*  
*Cheerfulness      Lowest Prices*  
*Best Location      High Quality*

Clothing

Shoes

Dry Goods



*In the Jungles 20 Miles from Eureka—Weazel Creek*

## *Lincoln County Market*

T. Prichard, Proprietor

*Wholesale and Retail*

All Kinds of Fresh and Cured  
Meats and Poultry

*Eureka, Montana*



*Fortune Creek at Eureka—Ideal for Logging*

A North and South trail association has been formed covering the connection of the Yellowstone trail and the Roosevelt highway, by way of Glasgow and Miles City.



*Hunting Party Near Eureka*

**REXFORD—651**

Population 150. One hotel, camp sites and boating, fishing and hunting.



*Camp Near Rexford*

***HUNTING and FISHING  
SUPPLIES***

**General Store**

***W. C. Fewkes***

Rexford

Montana

***General Store  
and Gasoline***

**A. J. Donaldson**  
Rexford, Montana



*Near Rexford—Big Game Hunters' Paradise*

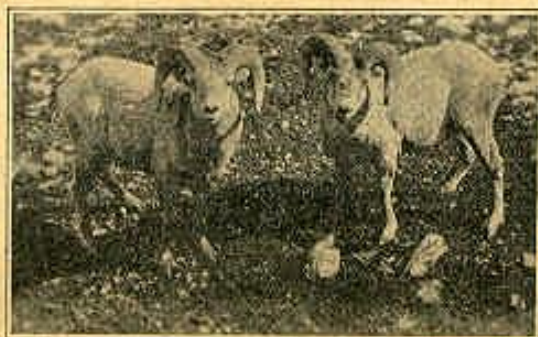
#### **WARLAND—681**

Population 300. Hotel and stores. Camp sites anywhere. Ferry across Kootenai. Large lumber mills. Home of the Blacktail deer; wonderful fishing and hunting in season.

#### **LIBBY—709**

Population 2300. Has modern hotels, garages, etc. Splendid camping facilities. The county seat of Lincoln county, is one of the most interesting little western cities touched by the Roosevelt highway. Libby is reached from the east after a trip fifty miles in length along the picturesque Kootenai river, which carries a larger annual flow than any other river in Montana. The highway follows the western shore of the Kootenai from the bridge at Rexford to the bridge at Libby. No towns or villages, and only a few homesteads are to be found along this entire fifty mile stretch, although a number of populous railroad stations are to be observed at various points across the river.

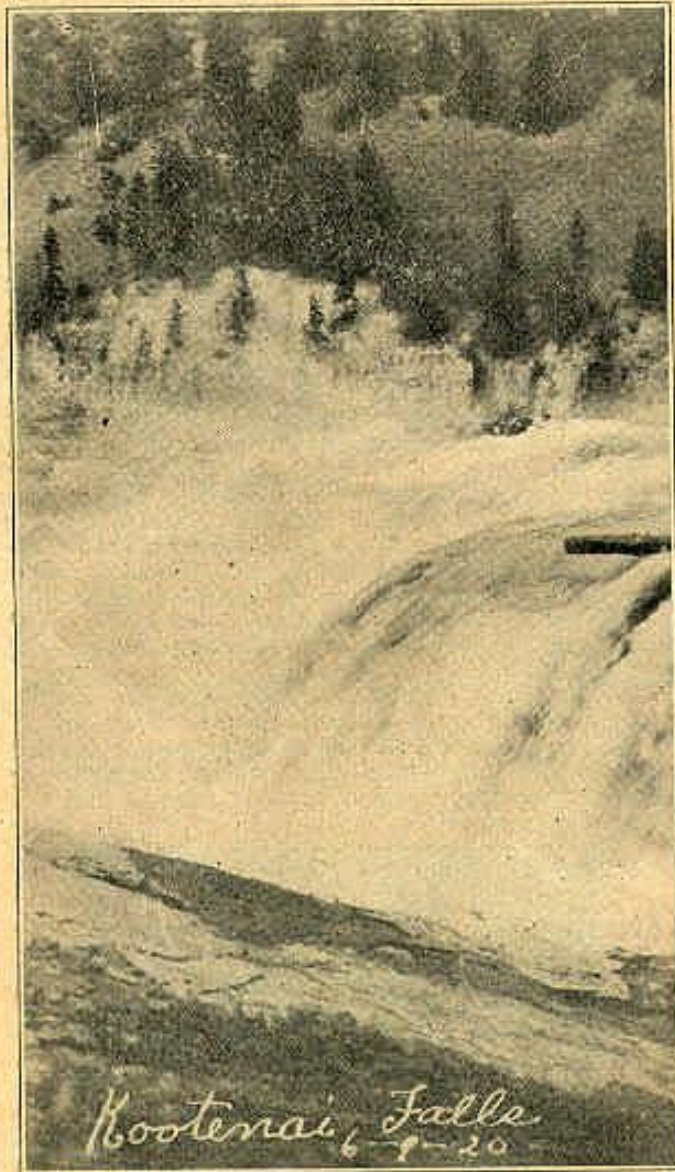
The dense woods adjacent to the road are mainly included in the Kootenai National forest. They are filled with wild game, including deer in abundance, bear, grouse and pheasants. A person might travel the game trails westward from this highway along a greater part of the



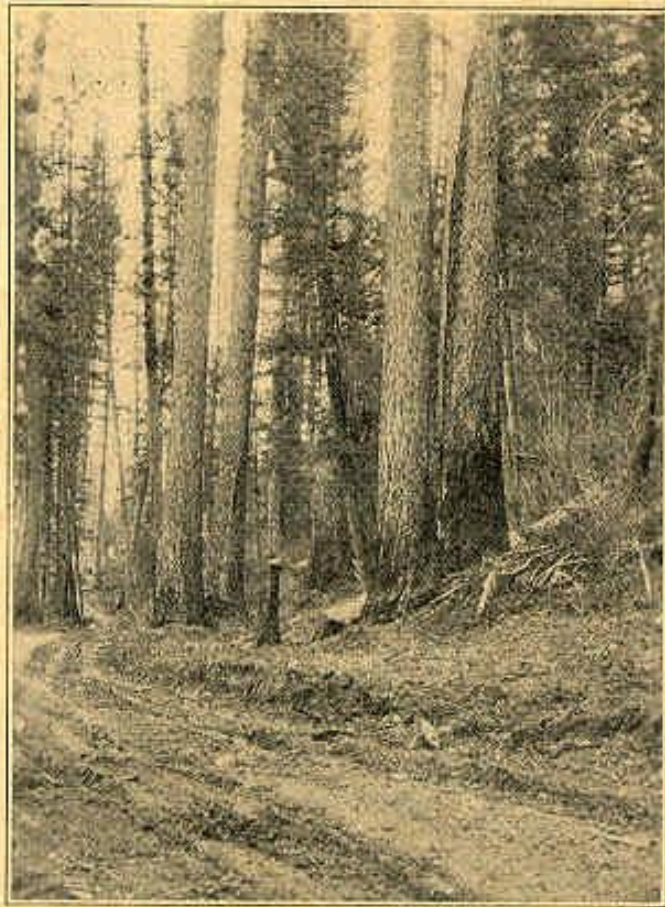
*You Might Draw a Pair*

distance from Rexford to within a few miles of Libby, and progress for 50 miles without encountering another human being or sign of habitation. Except in high water time each spring the waters of the Kootenai are clear and sparkling, and offer splendid opportunities to the skillful angler, although the best fishing to be had in this part of the country is found in smaller streams, a great number of which may easily be reached from Libby.

The mountains south of Libby contain what is said to be the largest comparatively undeveloped mineral belt in the west. One prosperous mine is operating its concentrating mill and shipping its product regularly. By following what is known as the Shaughnessy Hill road, leading south from Libby, a motorist can reach the heart of this mining section in 50 minutes, and can at the same time enjoy a wealth of mountain scenery. The roadway and grade are good all the way. From the end of this road a fine forestry trail leads nine miles to Granite lake, one of the most remarkably wild and beautiful bodies of water to be found anywhere. This lake is fed from Blackwell Glacier, which stretches out and away as far as the eye can see, challenging the hardy adventurer to climb and explore it. This region is the home of innumerable mountain goats and other game.



*Between Troy and Libby*



*Merchantable Timber Along the Highway in Lincoln County*

*Largest*  
**Department Store**  
*In Lincoln County*

Everything to Eat and Wear

Auto Supplies and  
Gasoline

Hunting and Fishing Supplies

**Kootenai Mercantile Co.**  
*Corner South Hotel Libby*

Libby - Montana

*W. M. Cady*

*A. H. Pier*

Fordson

# *Libby Garage*

Fire Proof

FORD

Authorized Sales and Service

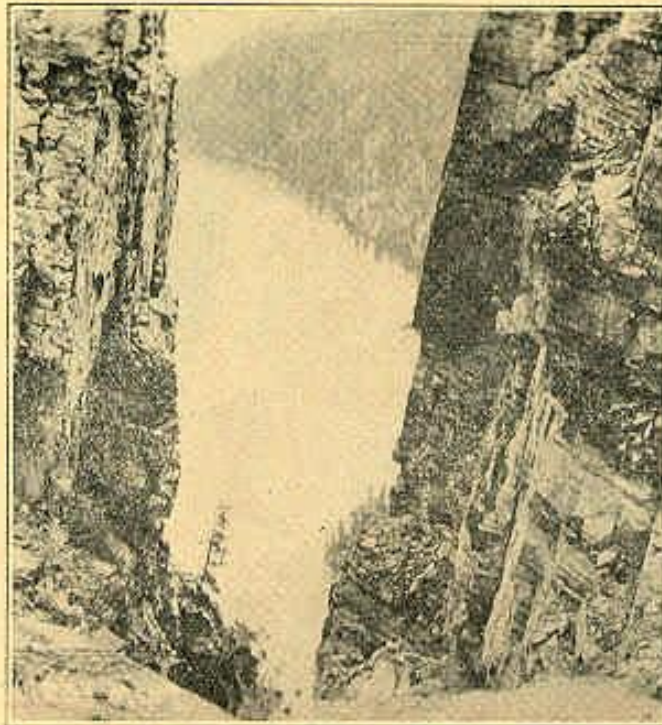
*Studebaker, Hudson  
Overland, Chevrolet  
Service*

United States, Firestone and  
Goodrich Tires

Vulcanizing

*Special Attention to Tourists*

Libby, Montana



*Near Libby—Stop! Look! Go Fishin.*

**PIONEER MEAT MARKET**

H. A. JOUGHIN, Prop.

**Wholesale and Retail  
Meats**

Around Corner One Block  
South of Depot

**LIBBY, MONTANA**



*Kootenai Canon, Between Troy and Libby*



*Granite Creek Falls Near Libby*

#### TROY—731

Population 800. One hotel, two garages and oil station. Camp sites. Inquire of M. J. Sullivan, Chamber of Commerce. The editor of the Troy Echo, graphically says of Troy:

"Troy is a freight division point of the Great Northern railroad, 108 miles east of Spokane and 148 miles west of Belton, the western entrance to Glacier Park. It is situated on the south side of the Kootenai river. It's altitude is 1878 feet, the lowest in Montana. Harsh winds do not prevail, extreme cold weather is a rarity, summer days are warm and nights cool. Rains and snowfalls moisten the soil and feed the lakes and streams for the year 'round. Grateful green grass and forests immediately surround the town and vicinity on all sides the entire twelve months. The natural topography is such as to insure perfect drainage. Myriads of feathered songsters enliven the forests, fish run hogwild in streams and deer, bear, cougar, pheasants, blue grouse and the like in profusion inhabit the forests.

## *D. F. Fewkes & Co.*

Wholesale and Retail

General Merchandise

Troy, Montana

TWO STORES

*Men's Furnishings—Corner Yaht and Third Street  
Hardware and Groceries—Yaht Avenue*

Tourists Get a Square Deal