



# Artificial Intelligence: Research Updates

AASHTO-RAC Annual Meeting  
Billings, Montana  
July 14, 2025

Kohinoor Kar, Ph.D., P.E., PTOE  
ADOT Research Center

## General Expectations from AI

Hey, AI! How can we reduce AZ fatalities to ZERO in next 20 years? Give me top five most effective countermeasures to achieve this goal.

**vs.**

Hey, AI! How many reported roadway fatalities occurred on tribal lands in AZ during last 5 years?

# Generative AI vs. Machine Learning

Gen AI models are trained to generate new, original data that is similar to the data they were trained on.

*Example: Summary of specific crash data by severity.*

**vs.**


ML involves training algorithms using historical data to identify patterns, make predictions, and automate tasks.

*Example: Preventive maintenance of pavement/bridge.*

# AI Statewide Policy in AZ: General

**Generative AI** is a powerful tool that can be used to improve government services and operations. General principles to follow:

- Empowerment
- Transparency and Accountability
- Fairness
- Security
- Privacy
- Training
- Procurement
- Legal

ARIZONA DEPARTMENT OF ADMINISTRATION	STATEWIDE  POLICY	 State of Arizona
---	-------------------------	---

## P2000 - GENERATIVE ARTIFICIAL INTELLIGENCE (Gen AI)

DOCUMENT NUMBER:	P2000
EFFECTIVE DATE:	MARCH 15, 2024
VERSION:	1.0

### 1. AUTHORITY

To effectuate the mission and purposes of the Arizona Department of Administration (the "Department"), the Department shall maintain a "coordinated statewide plan for information technology" implemented and maintained through policies, and "adopting statewide technical, coordination and security standards" as authorized by Arizona Revised Statute A.R.S. § 18-104 (A)(1)(a). The Department shall also "formulate policies, plans and programs to effectuate the government information technology purposes of the department" pursuant to A.R.S. § 18-104 (A)(13).

# AI Statewide Policy in AZ: Requirements

- AI output must be reviewed by knowledgeable human operators for accuracy, appropriateness, privacy, and security before being acted upon or disseminated. Generative AI output should not be assumed to be truthful, credible or accurate.
- Generative AI output shall not be used to impersonate individuals or organizations without their prior written permission.
- Other requirements relate to information technology, security, privacy policies, functionality, etc.

# AZ AI Steering Committee

- AZ governor convened in May 2025 a 19-member task force comprised of experts from government, academia, and industry.
- Key responsibilities and goals:
  - Developing a statewide AI policy framework
  - Recommending governance models and procurement guidelines
  - Engaging communities and stakeholders
  - Promoting AI literacy and workforce preparedness

**Under Discussion - Not Finalized Yet**

## **ADOT's Aspirational Strategic Goals**

- Enhance transportation safety and security
- Optimize infrastructure lifecycle and resilience
- Improve traffic management, mobility and freight efficiency
- Support sustainable and future-ready transportation
- Elevate customer experience and public engagement
- Empower the ADOT workforce and foster innovation



**Under Discussion - Not Finalized Yet**

## **ADOT's Key Focus Areas**

- AI governance, ethics, risk, and policy
- Data readiness and management
- Talent development and organizational culture
- Technology, tools, and platforms
- AI use case identification, prioritization, and piloting
- Partnerships and collaboration



## **ADOT Research Studies on AI...1**

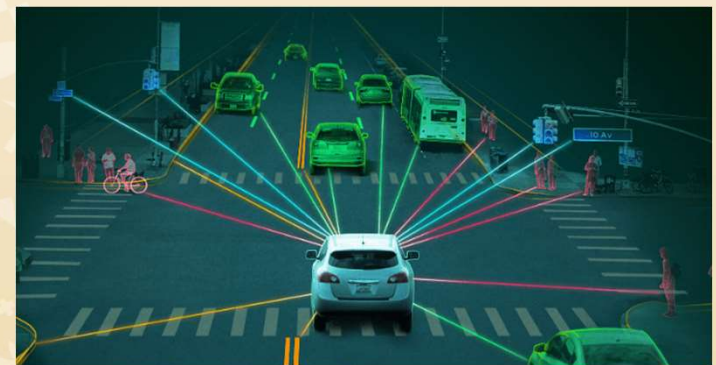
- A fast-track study, Artificial Intelligence Policies at State Departments of Transportation: The State of the Practice
  - Snapshot of policies governing AI use at state DOTs.
  - Objective to highlight lessons learned at other DOTs, guide ADOT in developing our own strategy
  - Scope of work currently under development
  - Study should be completed in 5 months from the NTP date

## **ADOT Research Studies on AI...2**

- An expedited study, Exploring AI Technologies for Transportation Data Applications
  - Objectives are to help state DOTs understand AI, its potential applications, and how to develop policies on its uses for transportation data, while also keeping public trust.
  - PI selection currently in progress
  - Study should be completed in 10 months

## Looking Forward...

- ADOT IT Group developing agency-wide AI Policy
- ADOT business units developing “pilot” AI use cases
- AI literacy and limitations
- Developing an AI strategic plan and road map
- Training across the department





# Closing Comments

Contact Information

Kohinoor Kar, [kkar@azdot.gov](mailto:kkar@azdot.gov), 602.712.3134  
[azdot.gov/research](http://azdot.gov/research)