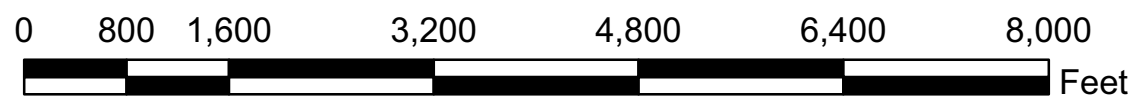


# Environmental Resources

Figure A

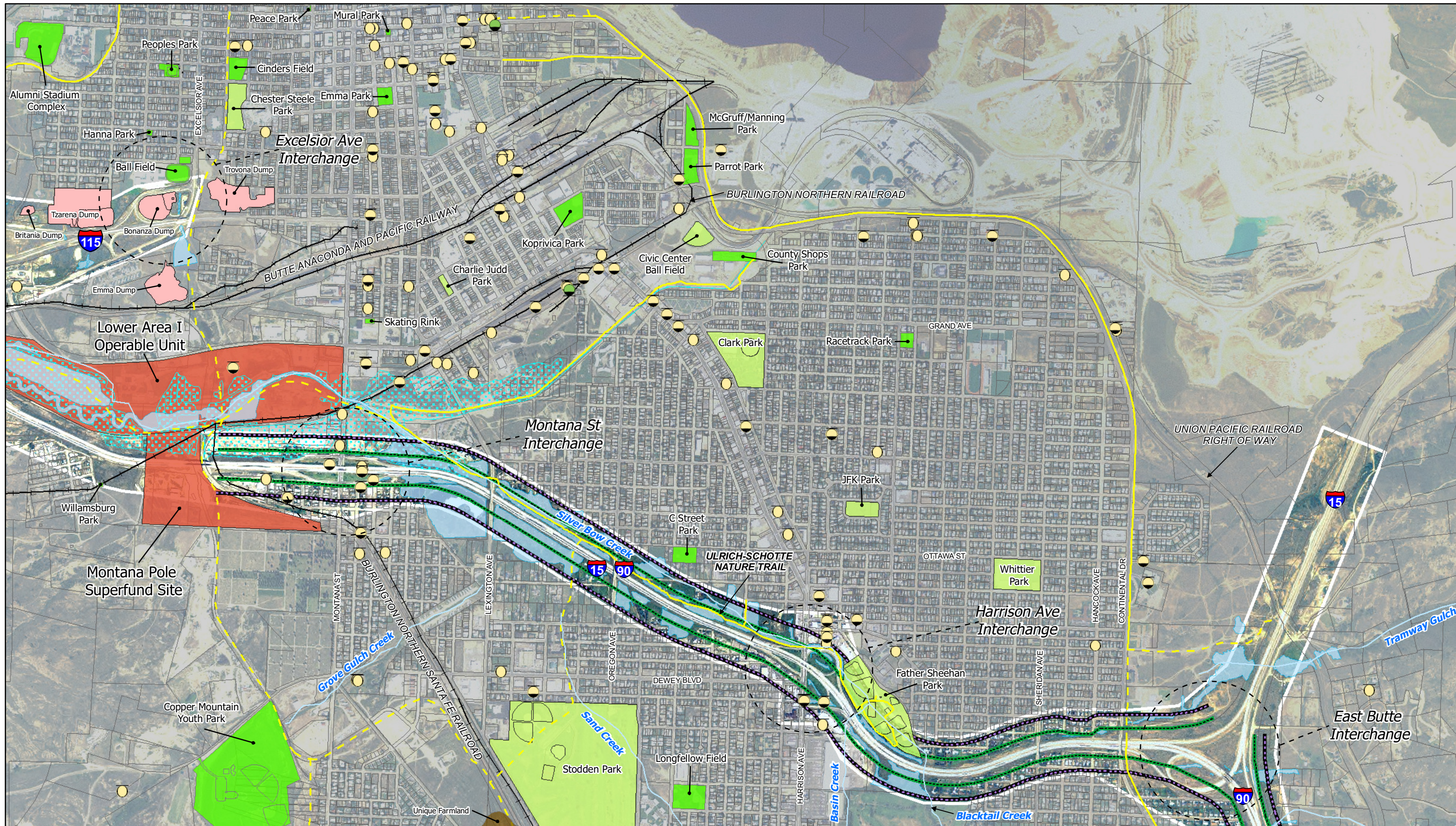


## Legend

- |                  |                          |                                  |
|------------------|--------------------------|----------------------------------|
| Railroads        | Parks (6F)               | Underground Storage Tank         |
| Existing Trails  | Parks                    | Leaking Underground Storage Tank |
| Proposed Trails  | Prime/Unique Farmland    | Leaking Aboveground Storage Tank |
| Wetlands         | Superfund Operable Units | Noise Contour 66 dBA             |
| 100yr Flood Zone | Dumps                    | Noise Contour 71 dBA             |

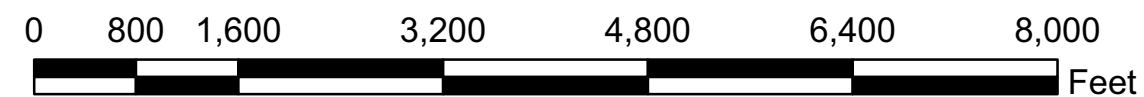






# Environmental Resources

Figure B

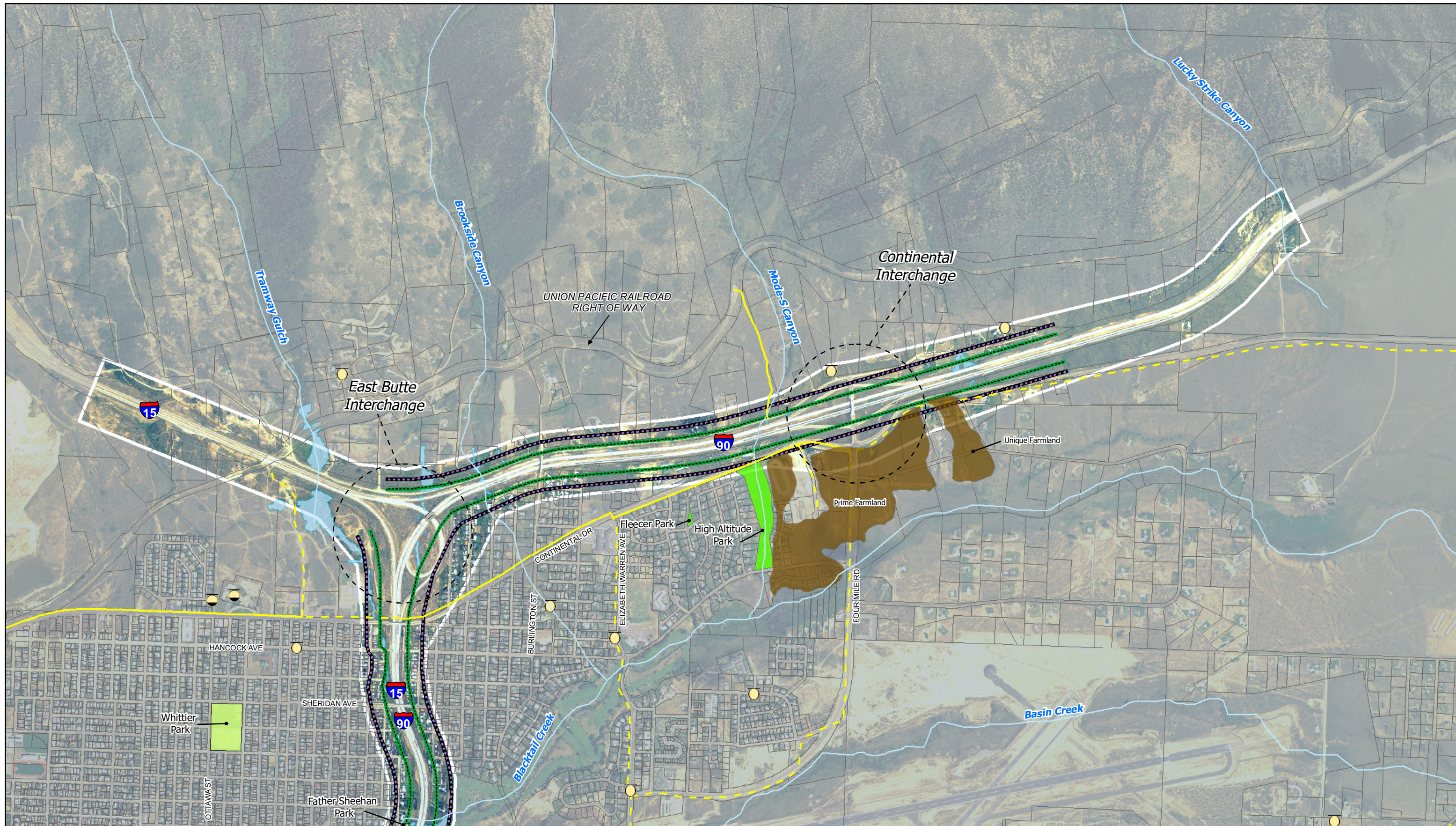


## Legend

- Railroads
- Existing Trails
- Parks (6F)
- Leaking Underground Storage Tank
- Proposed Trails
- Parks
- Leaking Aboveground Storage Tank
- Wetlands
- Prime/Unique Farmland
- 100yr Flood Zone
- Superfund Operable Units
- Noise Contour 66 dBA
- Dumps
- Noise Contour 71 dBA

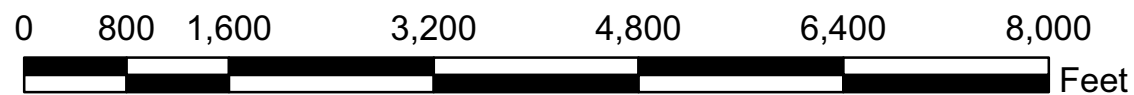






# Environmental Resources

Figure C



## Legend

- Railroads
- Existing Trails
- Proposed Trails
- Wetlands
- 100yr Flood Zone
- Parks (6F)
- Parks
- Prime/Unique Farmland
- Superfund Operable Units
- Dumps
- Underground Storage Tank
- Leaking Underground Storage Tank
- Leaking Aboveground Storage Tank
- Noise Contour 66 dBA
- Noise Contour 71 dBA

