

Hamilton Community Transportation Safety Plan



Safety Oversight Committee Meeting No. 3

November 10, 2010

Overview

- ◆ **Welcome / Introductions**
- ◆ **Safety Forum Update**
- ◆ **Preliminary Data Review**
- ◆ **Discuss Data Discrepancies**
- ◆ **Identified Emphasis Areas**
- ◆ **CTSP Goal Statement**
- ◆ **Plan Schedule**
- ◆ **Website**
- ◆ **Next Steps**

Safety Forum

- ◆ **Update on Community Transportation Safety Plan Forum (CTSP)**
 - Will not be held in November
 - Looking at possible December 9 date

Safety Issues Identified

- ◆ Older Drivers
- ◆ Cell phones/Texting and driving
- ◆ Safety belt usage
- ◆ Problem locations
- ◆ Animal/Vehicle crashes
- ◆ Young Drivers
- ◆ Bicycle/Pedestrian safety
- ◆ Emergency & Medical Services

Preliminary Data Review

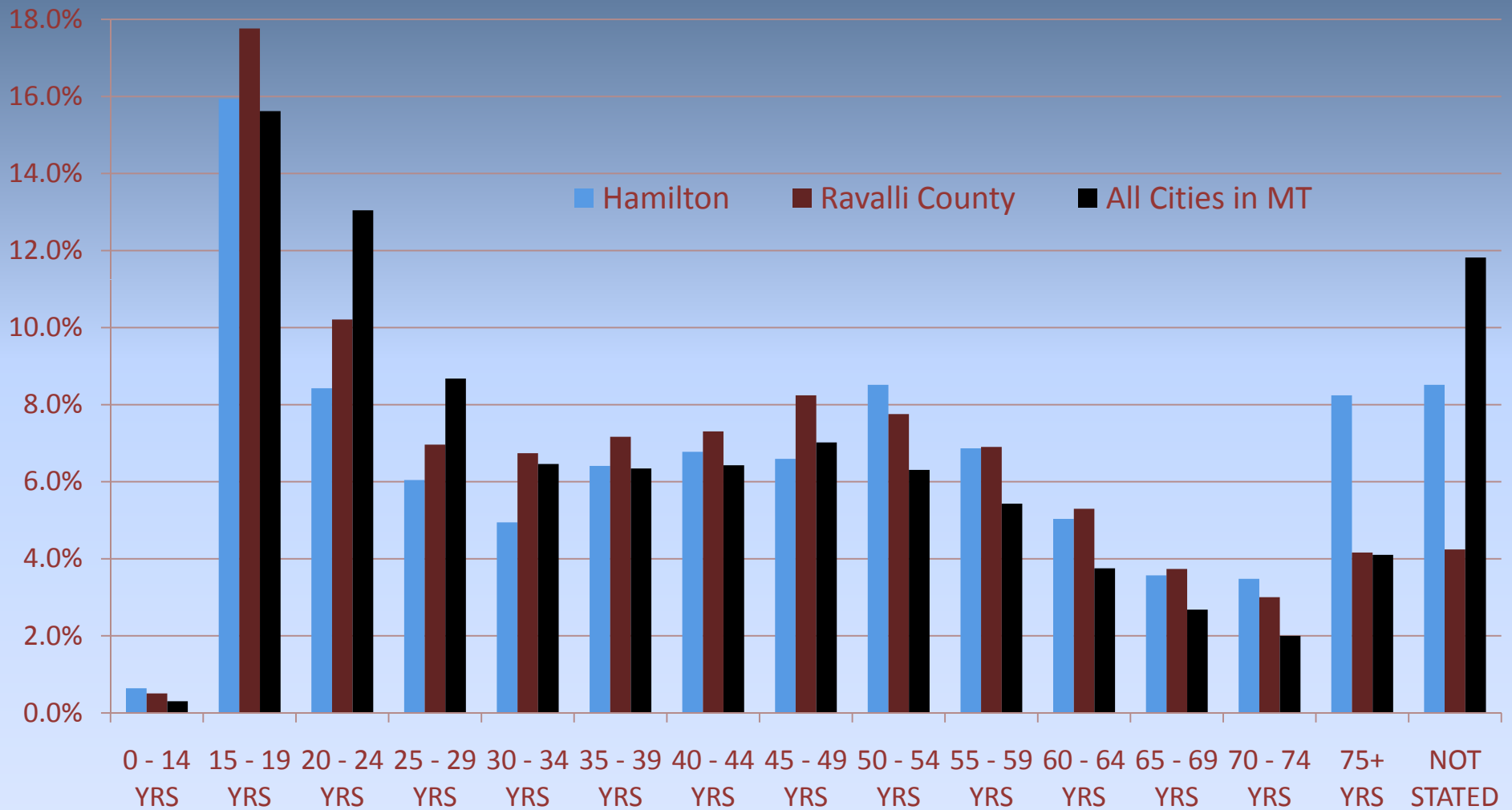
- ◆ Summarized by MDT from MHP crash report reporting system
- ◆ Data from 2005-2009
- ◆ Comparison of Hamilton vs. other cities

Discuss Data Discrepancies

◆ Hamilton PD Data differed from MDT Preliminary Data

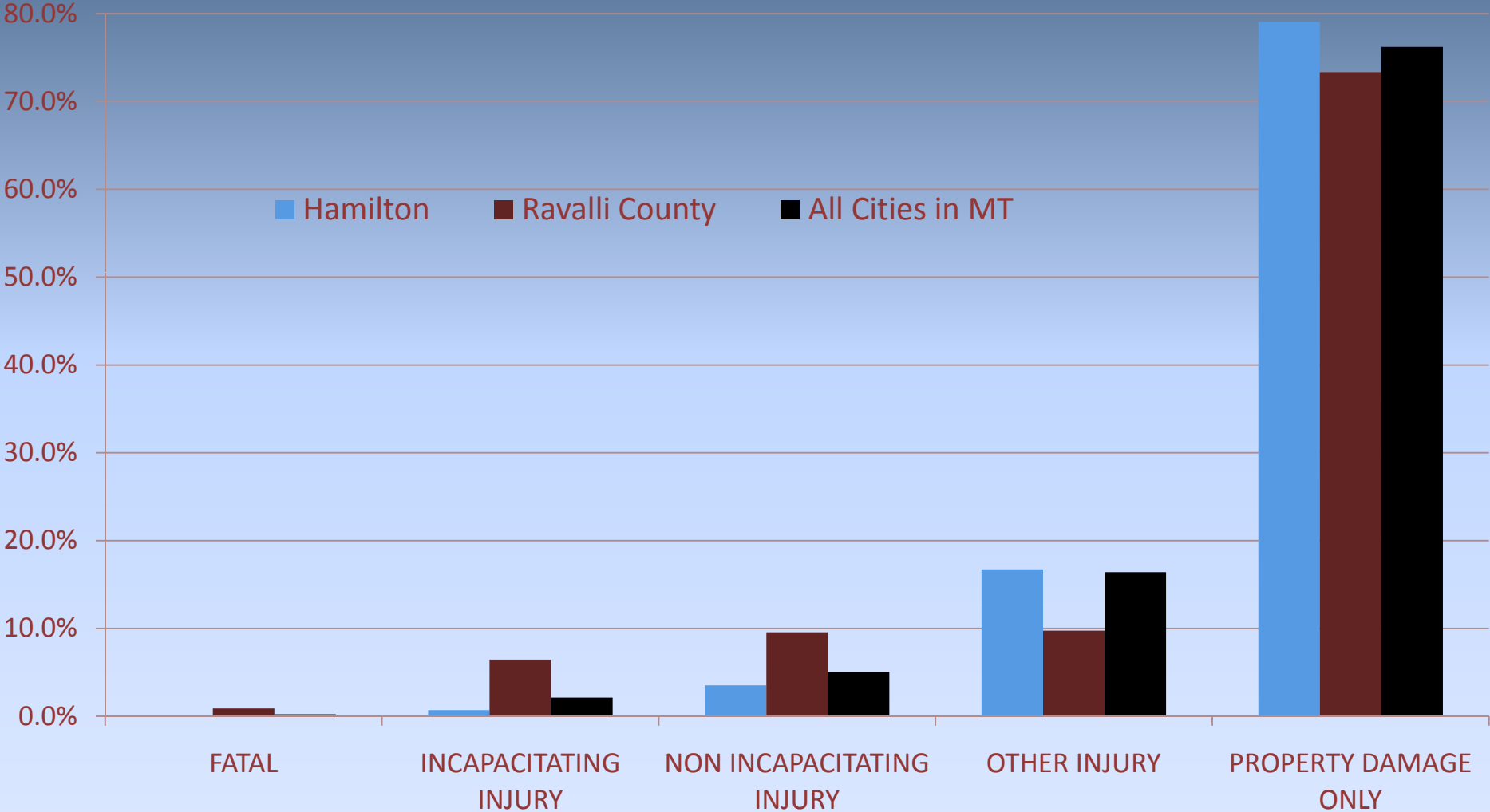
Local Law Enforcement Data	Data provided by MDT
All PDO Crashes	Only PDO Crashes > \$1000
All Locations in Hamilton	Only Public Roadways

Driver by Age (2005-2009)



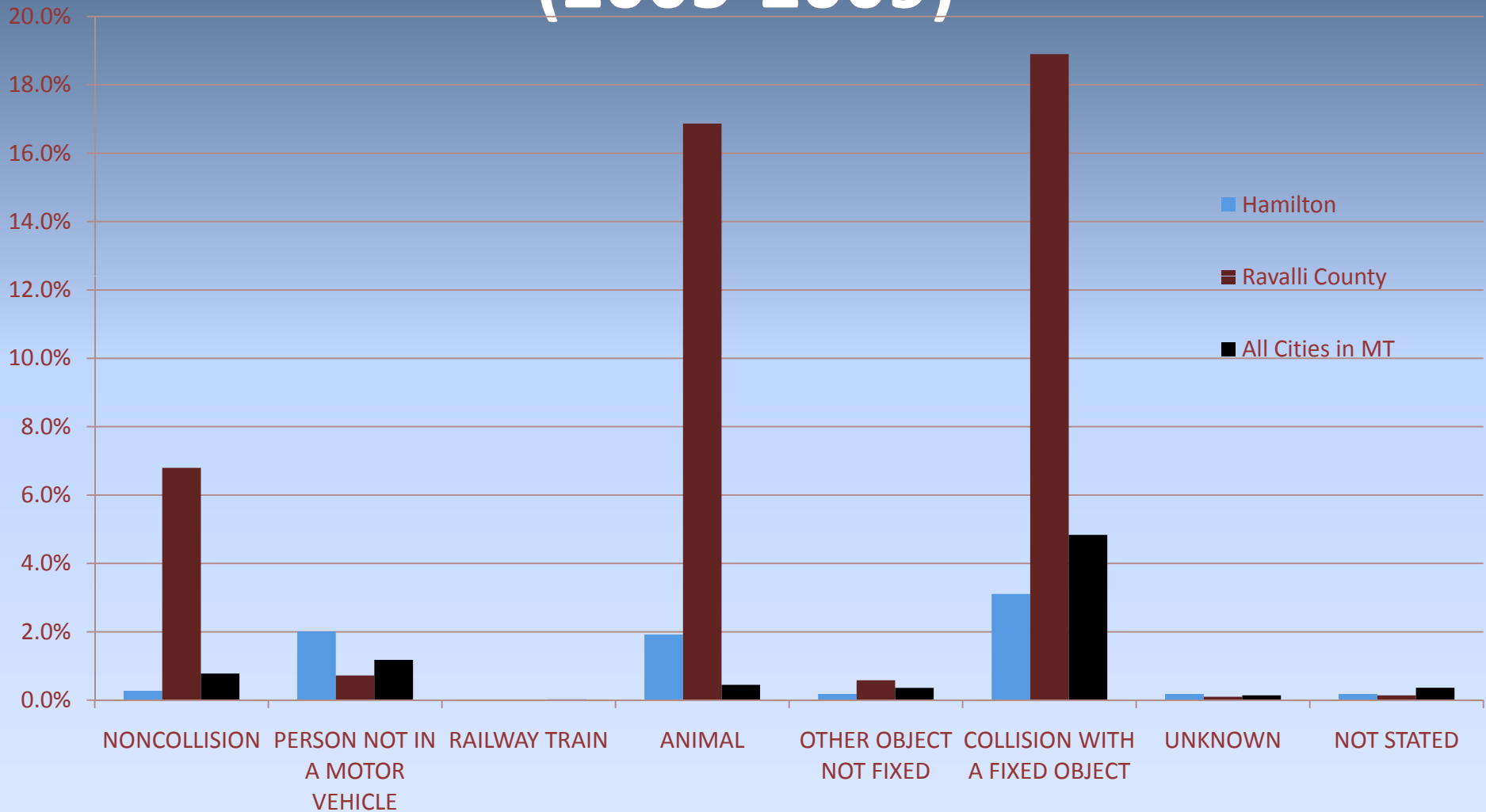
Source: MDT State Highway Traffic Safety Office

Crash by Severity (2005-2009)



Source: MDT State Highway Traffic Safety Office

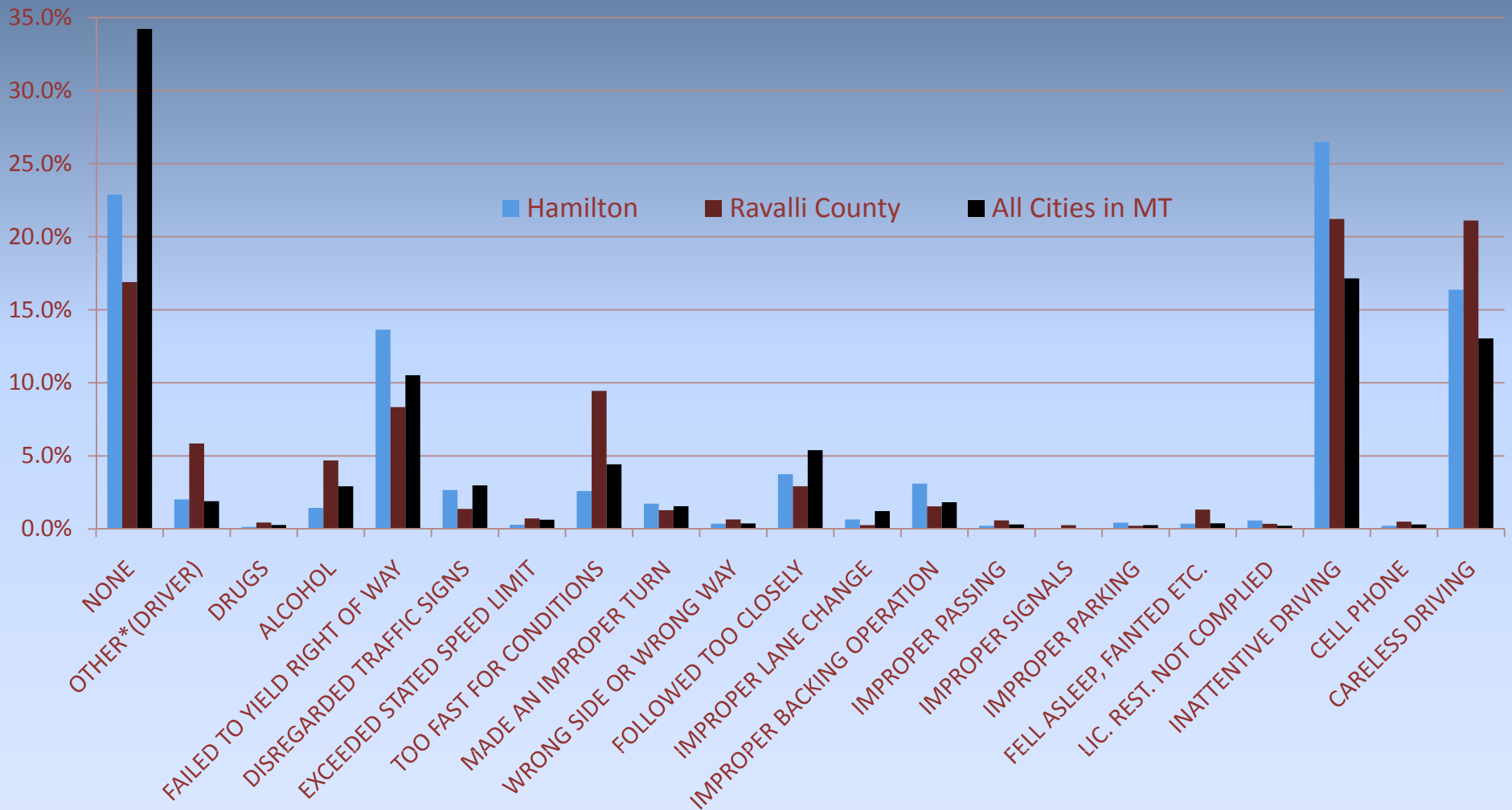
Vehicle by First Harmful Event (2005-2009)



◆ **Note: the chart excludes collisions with another motor vehicle in order to show the variations in other collision types.**

Source: MDT State Highway Traffic Safety Office

Contributing Circumstances Involving Driver (2005-2009)



Source: MDT State Highway Traffic Safety Office

Identified Emphasis Areas

- Older Drivers
- New/Young Drivers
- Cell Phone (emerging trend)
- Safety Device Usage
- User Behavior
- Infrastructure

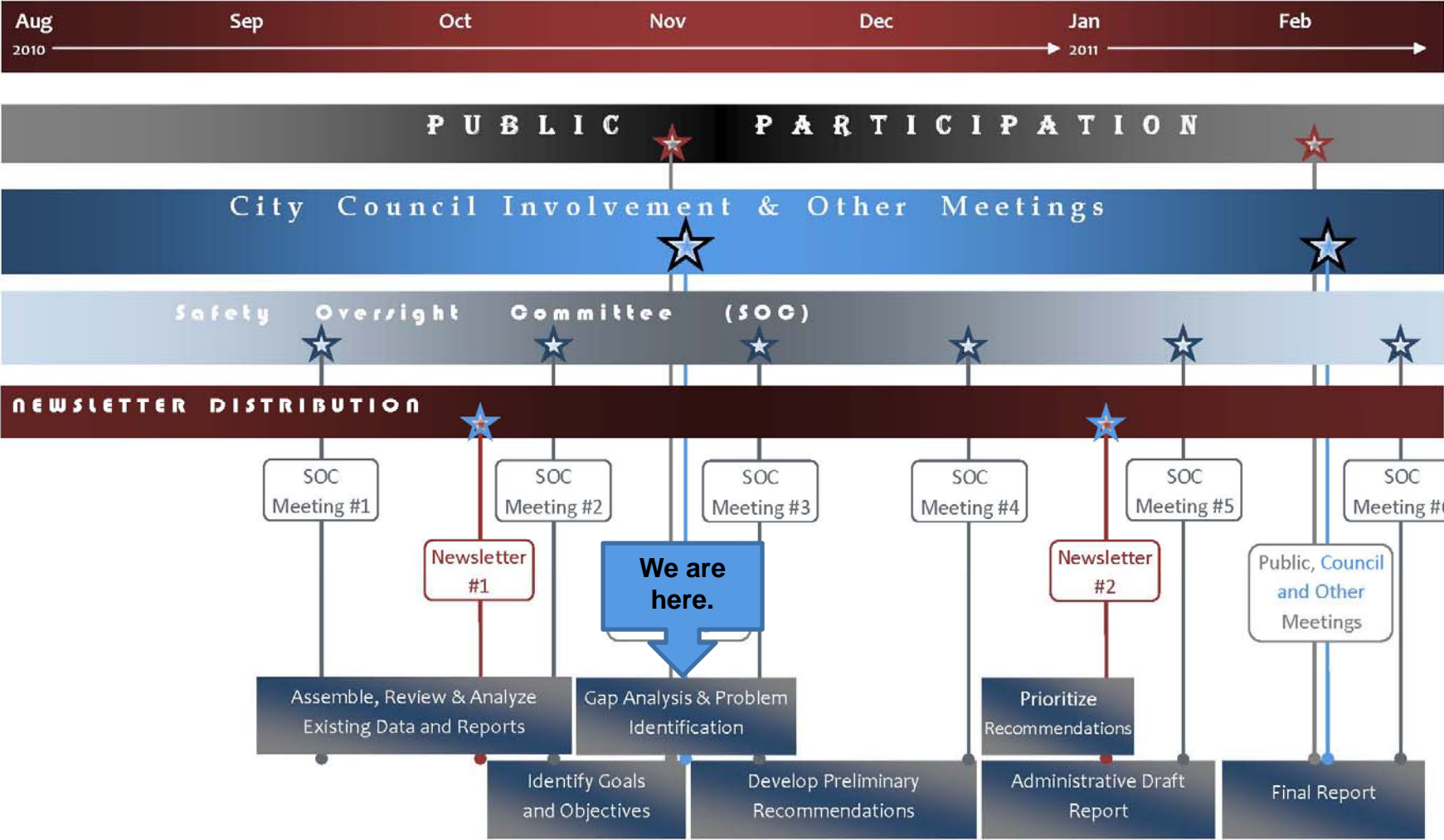
CTSP Goal Statement

“Preserve and enhance the quality of life by improving transportation safety for all users.”

Plan Schedule

Hamilton Community Transportation Safety Plan Schedule

Note: Task durations and public involvement dates are approximated.



Website

- ◆ **Posted to MDTs webpage on October 8th**
 - **Contact Information**
 - **Transportation Safety Planning Concept (Study Focus)**
 - **Schedule**
 - **Frequently Asked Questions**
 - **Public Involvement & Newsletters**
 - **Option to Comment**
 - **Related Links**
- ◆ **<http://www.mdt.mt.gov/pubinvolve/hamiltonsafety/>**

Hamilton Community Transportation Safety Plan



Community Transportation Safety Plan

- [Study Focus](#)
- [Schedule](#)
- [FAQs](#)
- [Public Involvement](#)
- [Comments](#)
- [Related Links](#)

Study Contacts

Dennis Stranger
City of Hamilton
406.363.3316 | [Email](#)

Other Contacts

Pam Langve-Davis
MDT Statewide and Urban Planner
406.444.7646 | [Email](#)

Carol Strizich
MDT Project Manager
406.444.9240 | [Email](#)

Jeff Key
CDM Project Manager
406.441.1409 | [Email](#)

Study Focus

The City of Hamilton, with technical and financial support from the Montana Department of Transportation (MDT), has initiated the development of the Hamilton Community Transportation Safety Plan (i.e. Transportation Safety Plan). The City of Hamilton desires to complete the Transportation Safety Plan to fully evaluate transportation safety concerns within the community and develop a plan to address them – in an open format with the full participation of the public.

The transportation safety plan is intended to help guide decisions regarding transportation safety in the community. Local Community Transportation Safety Plans are supported by the Montana Department of Transportation (MDT) to complement Montana's Comprehensive Highway Safety Plan (CHSP) goals and objectives. Public participation is a key component in any successful planning process. For this planning study, numerous public participation strategies are being proposed to reach as many people as possible and gather essential information to guide transportation safety improvements. The level of public involvement in transportation safety issues generally increases with the community's growth. The transportation safety plan will provide public outreach opportunities that will:

- Educate the public on the important elements of transportation safety from all 4 E's of safety (Education, Emergency Services, Enforcement and Engineering),
- Respond to the increasing interest of the general public to participate in planning in the community, and
- Increase the public's investment in the Community Transportation Safety Plan.

CDM will collect and review relevant crash and safety data for Montana, the City of Hamilton, and Ravalli County. The study area for the Transportation Safety Plan primarily includes the city limits of Hamilton, with the possibility of including areas outside the city limits if data, the public, the City, and County show a need.

Next Steps

- ◆ Continue with SOC Meetings
- ◆ Safety Forum
- ◆ Emphasis Area Identification Memo
- ◆ Inventory programs/Gap Analysis
- ◆ Develop Implementation Strategies
- ◆ Draft CTSP
- ◆ Final Safety Forum

Questions

- **See link to Hamilton Community Transportation Safety Plan**
- **<http://www.mdt.mt.gov/pubinvolve/hamiltonsafety/>**
- **See link to Montana Comprehensive Highway Safety Plan**

http://www.mdt.mt.gov/publications/docs/brochures/safety/current_chsp.pdf

CDM Helena, Montana Office

50 West 14th Street, 2nd Floor

Helena, Montana 59601

Tel: 406-441-1400 Fax: 406-449-7725