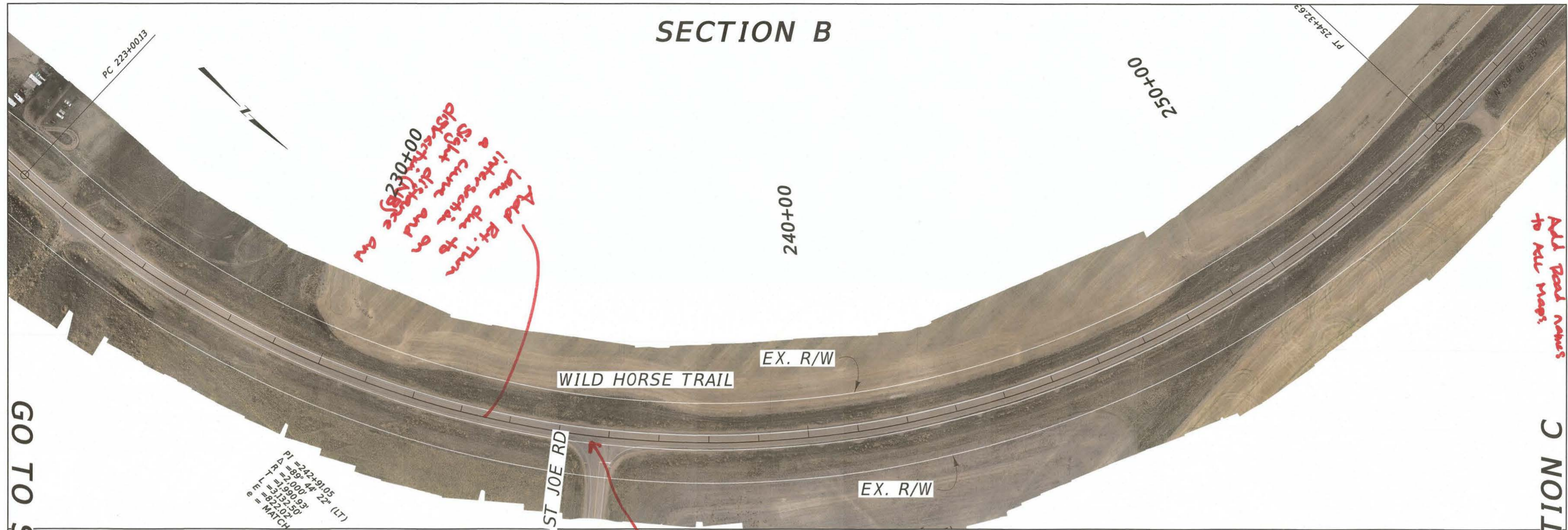


SECTION B



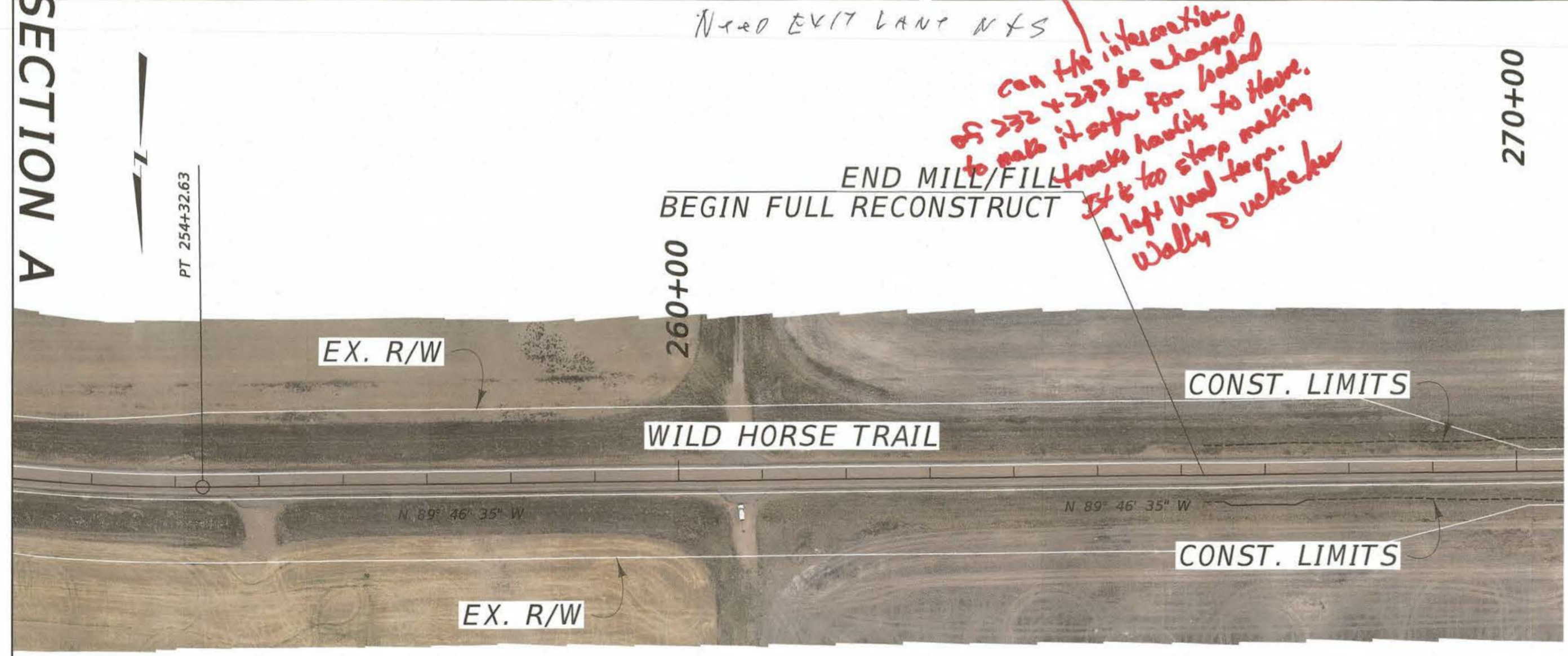
GO TO SECTION A

GO TO SECTION C

Need EXIT LAMP NYS

can the intersection of 232 + 273 be changed to make it safer for loaded trucks hauling to Havre. It is too steep making a left hand turn. Wally Duckwater

END MILL/FILL
 BEGIN FULL RECONSTRUCT



VISION ZERO
 zero deaths · zero serious injuries
 MONTANA DEPARTMENT OF TRANSPORTATION