

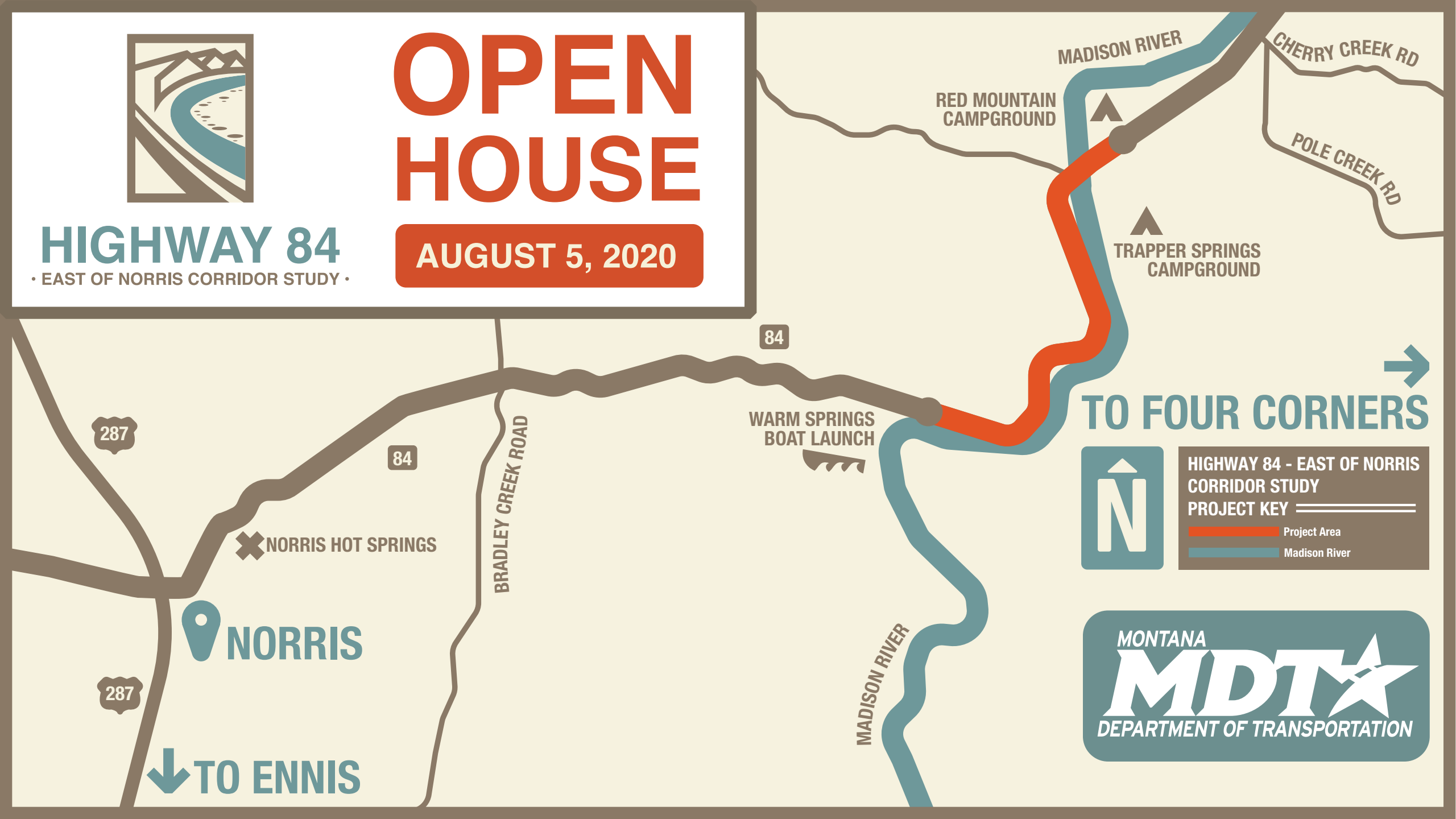


OPEN HOUSE

AUGUST 5, 2020

HIGHWAY 84

• EAST OF NORRIS CORRIDOR STUDY •

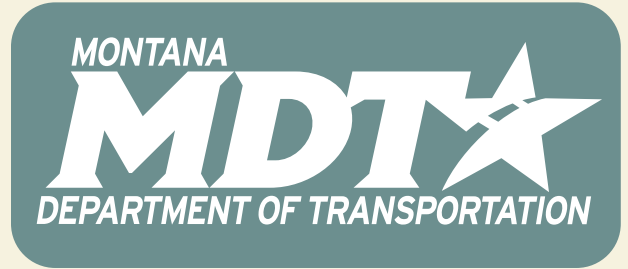


TO FOUR CORNERS

HIGHWAY 84 - EAST OF NORRIS CORRIDOR STUDY

PROJECT KEY

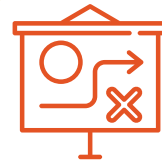
- Project Area
- Madison River



TO ENNIS



WHAT ARE CORRIDOR STUDIES ?



Corridor studies occur early in the planning process.



Studies help MDT identify feasible solutions.



Roadways that can benefit from safety improvements are nominated for this process.



Without studies, solutions may only address part of the roadway.

HIGHWAY 84

EAST OF NORRIS CORRIDOR STUDY OVERVIEW



This study is researching the area between Warm Springs Boat Launch and Red Mountain Campground.



This area is known for its curves and access to recreation on the Madison River.



Frequent crashes prompted the study. Improvements have been made: barrier rail, signage and rumble strips.

CORRIDOR STUDY TIMELINE



2020

Morrison-Maierle is in the process of developing feasible concepts to increase safety. This fall, Morrison-Maierle will present findings to MDT. MDT then reviews the study to determine the most appropriate plan.



2021

If a cost-feasible option is found, the project competes with others in the budgeting process to be designed and constructed.



BEYOND 2021

Due to MDT's five-year plan, 2026 would be the earliest an option may be considered to move into construction.



WHAT OPTIONS ARE WE EXPLORING?



CARVE INTO LANDSCAPE



RE-ALIGN ROAD TO INCLUDE A BRIDGE



RE-ALIGN ROAD TO GO AROUND MOUNTAINS



TUNNEL OPTION

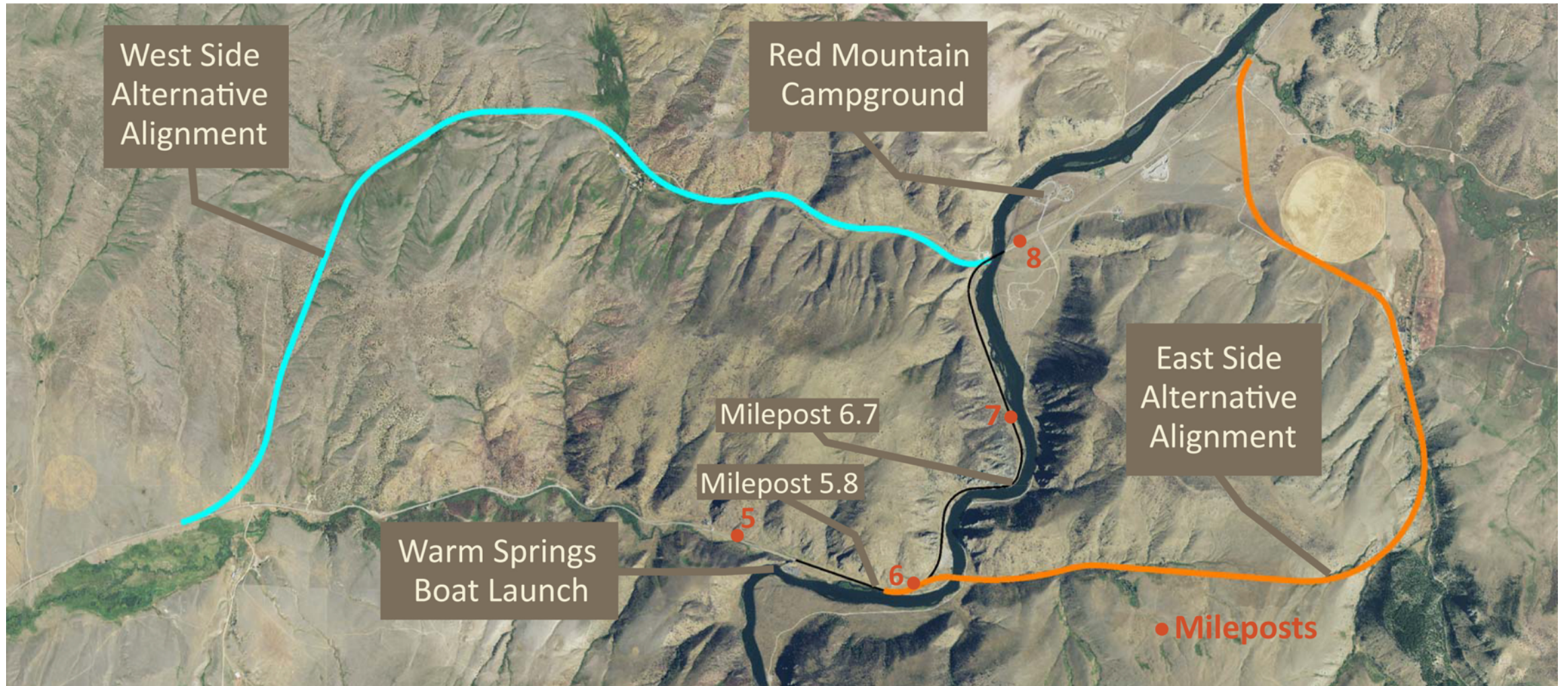


ALL OPTIONS ARE LIKELY TO BE EXPENSIVE. MORRISON-MAIERLE WILL IDENTIFY IF A COST-FEASIBLE OPTION IS POSSIBLE.

CARVE LANDSCAPE



RE-ALIGN ROAD



TUNNEL



VISION ZERO

Goal of zero deaths and
zero serious injuries on
Montana roadways



VISION ZERO ★

zero deaths · zero serious injuries

**MONTANA DEPARTMENT
OF TRANSPORTATION**



STAY IN THE KNOW



EMAIL:

Contact Takami at takami@bigskypublicrelations.com to subscribe.



PROJECT HOTLINE:

406-207-4484, Monday – Friday, 9 a.m. – 5 p.m.



WEBSITE: <http://bit.ly/highway84>



PLEASE TAKE THE SURVEY! <https://bitly.com/highway84survey>