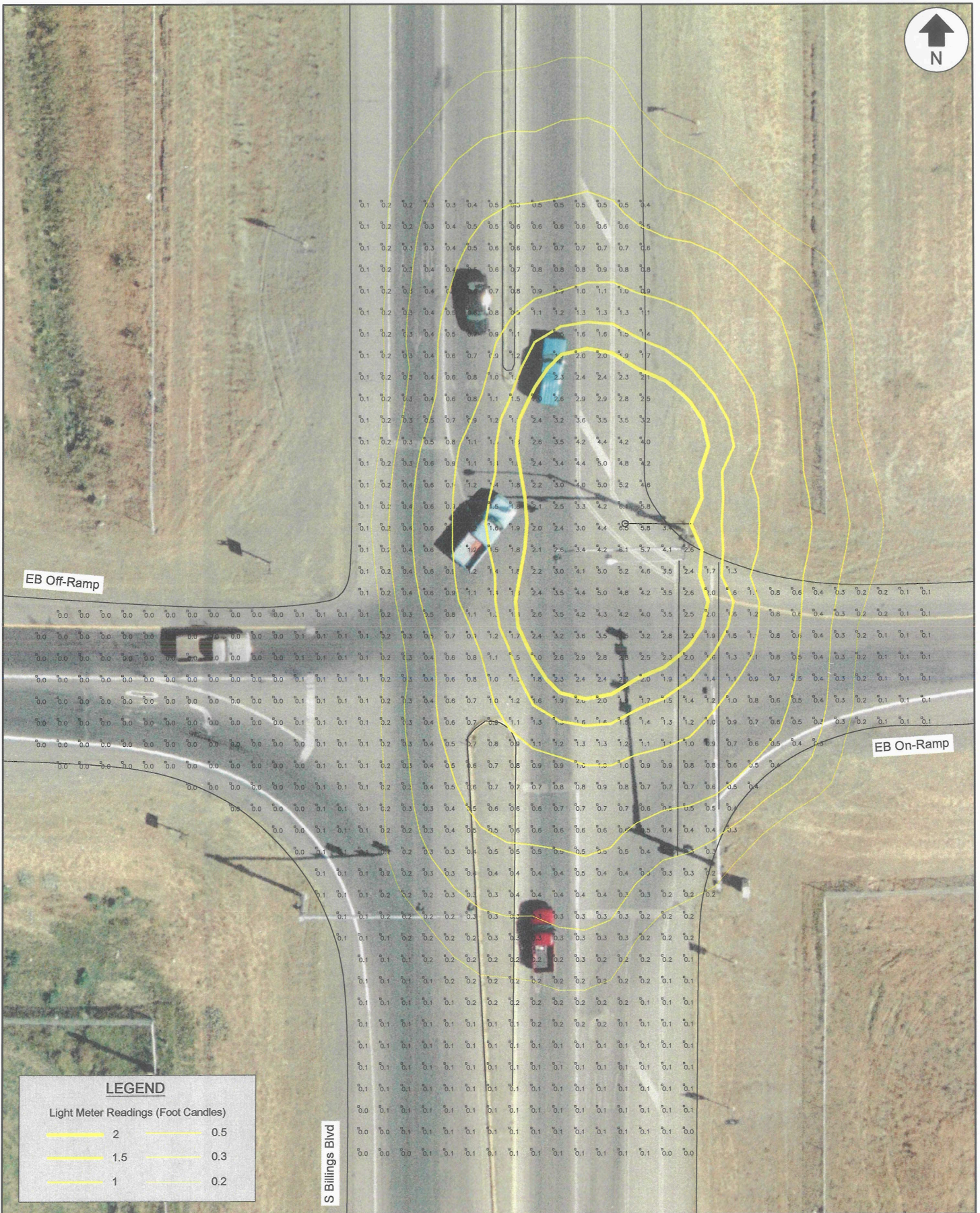


---

## Appendix G

### Street & Highway Lighting



**LEGEND**

Light Meter Readings (Foot Candles)

	2		0.5
	1.5		0.3
	1		0.2

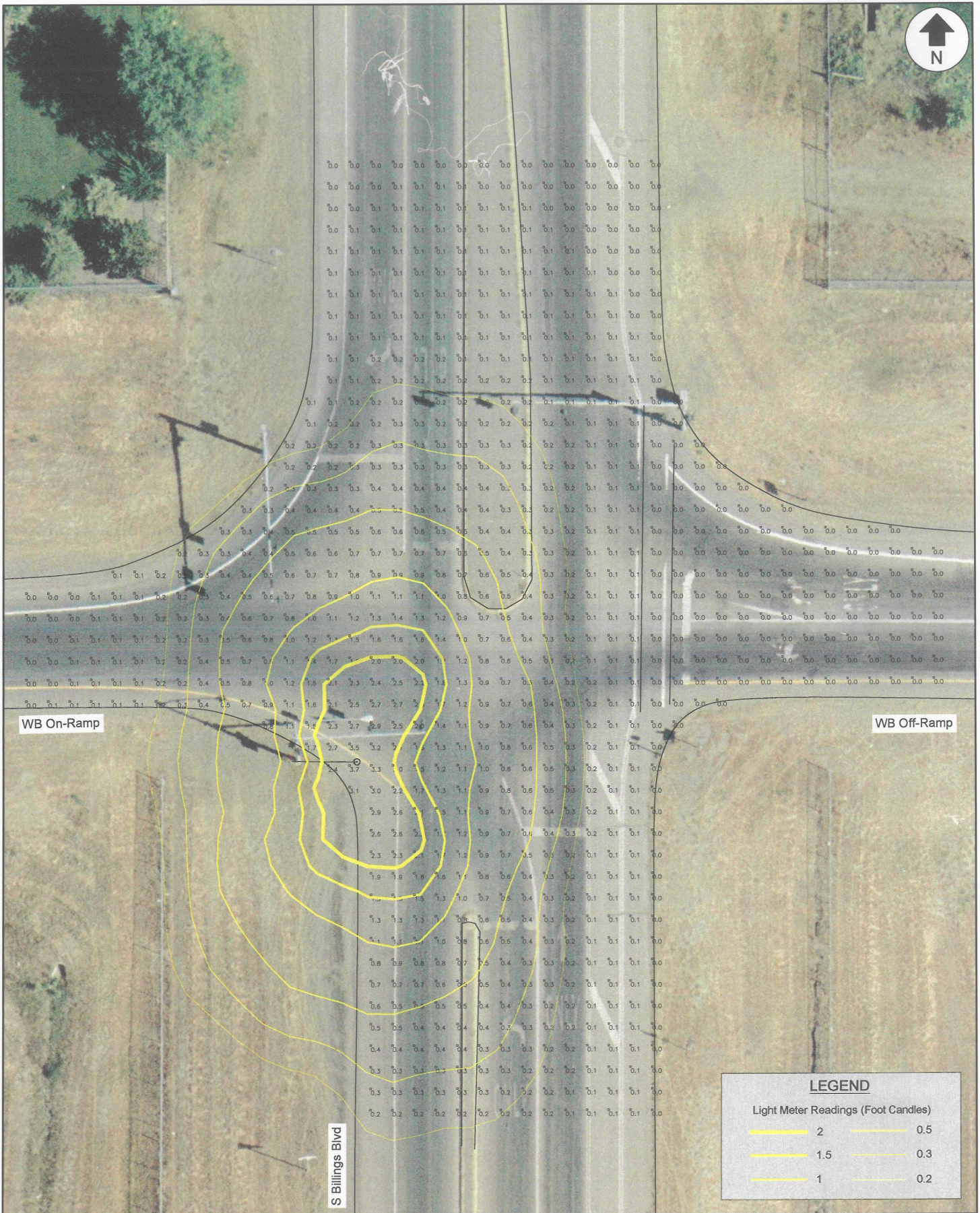
SEH  
Project # AMTDOT0306

**BILLINGS I-90 INTERCHANGE STUDY**

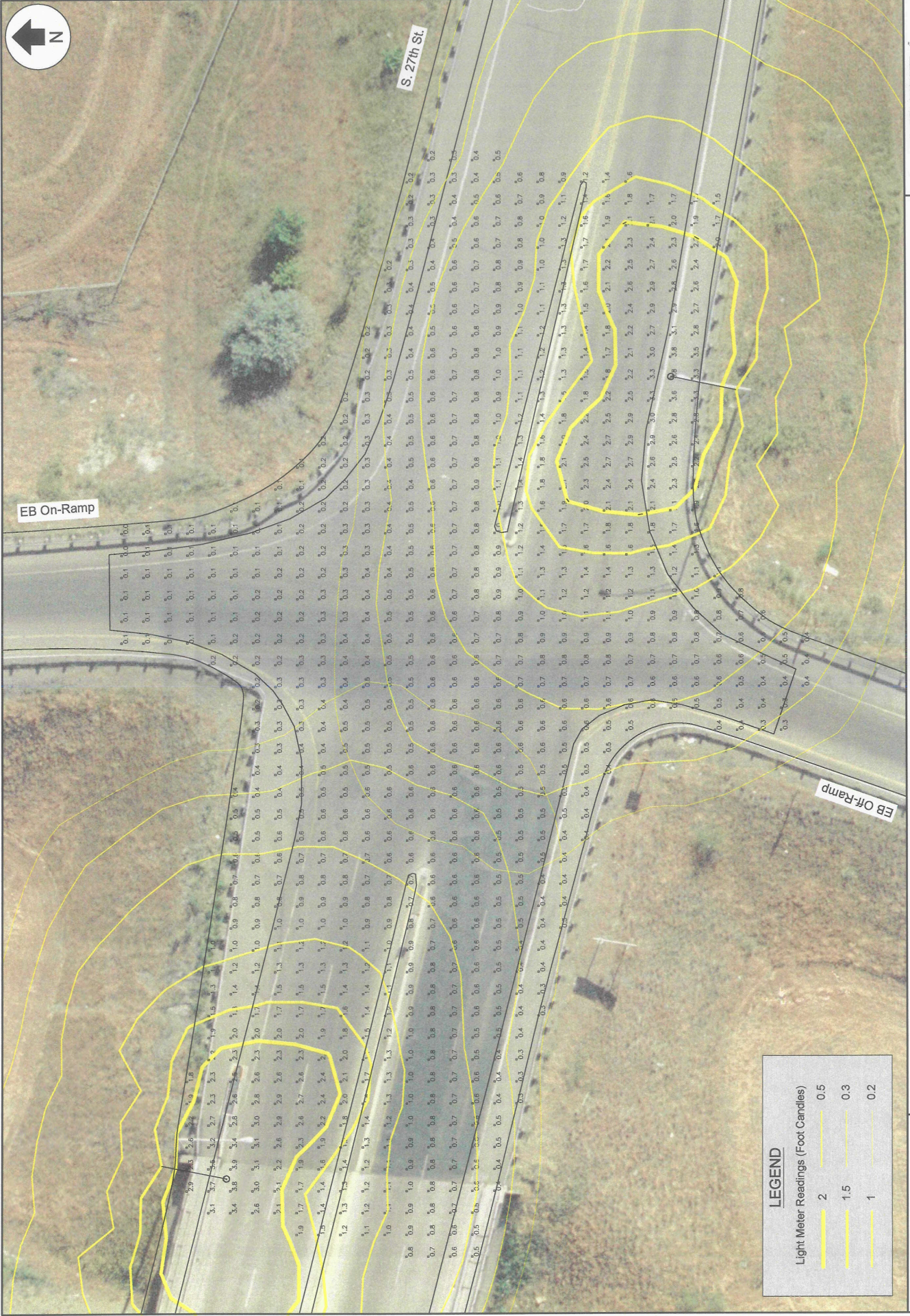
**AGI32 LIGHTING ANALYSIS - I-90 EB RAMPS AND S. BILLINGS BLVD.**

Scale	1"=30'	Date	March 2006	Drawn by	MSS	Figure	G-6A
-------	--------	------	------------	----------	-----	--------	------

MDT  
serving you with pride  
BILLINGS I-90  
INTERCHANGE STUDY



LEGEND	
Light Meter Readings (Foot Candles)	
2	0.5
1.5	0.3
1	0.2



**LEGEND**

Light Meter Readings (Foot Candles)

2	0.5
1.5	0.3
1	0.2



BILLINGS I-90 INTERCHANGE STUDY  
 AGI32 LIGHTING ANALYSIS - I-90 EB RAMPS AND S. 27TH ST.

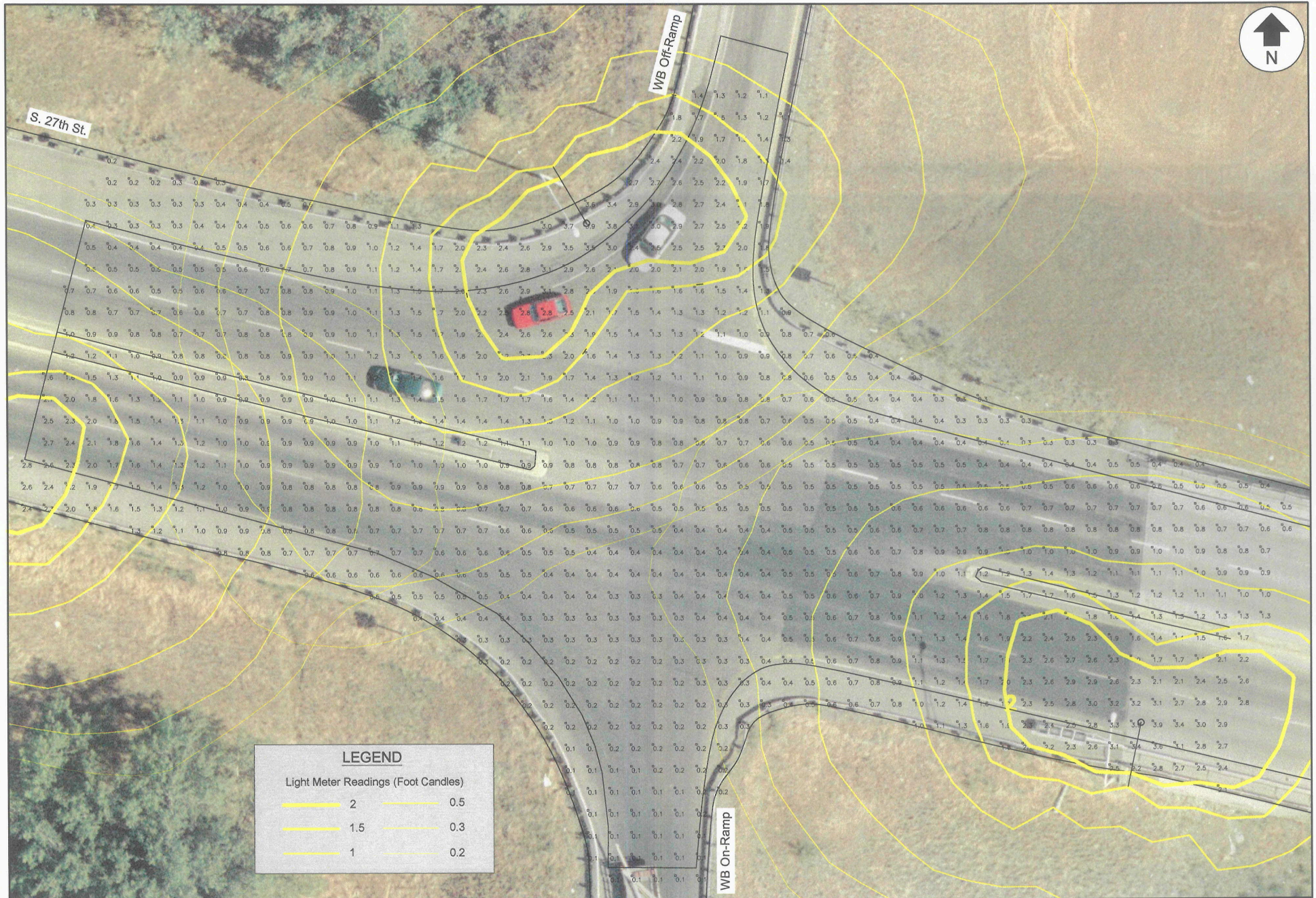
Scale 1"=30'

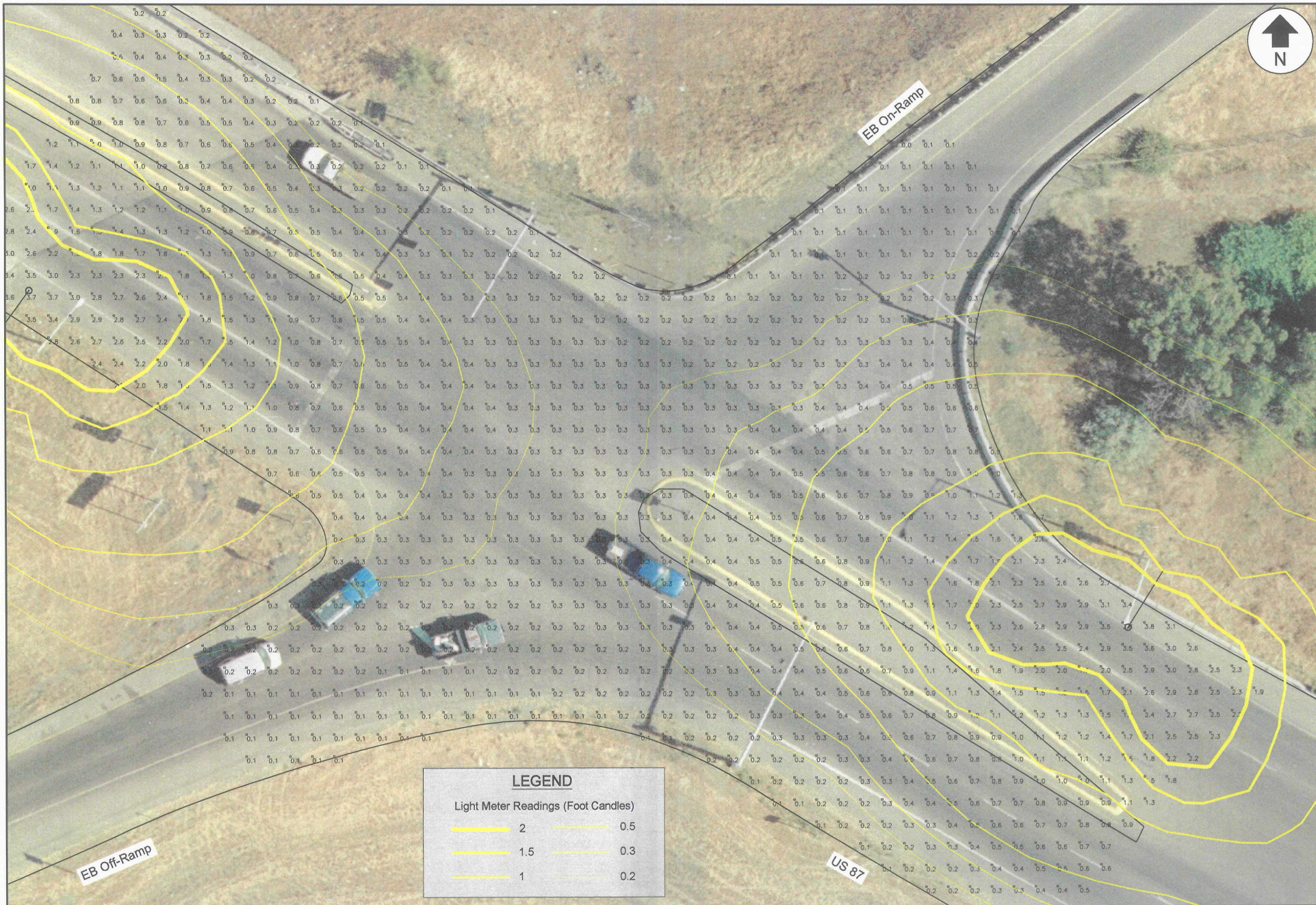
Date March 2006

Drawn by MSS

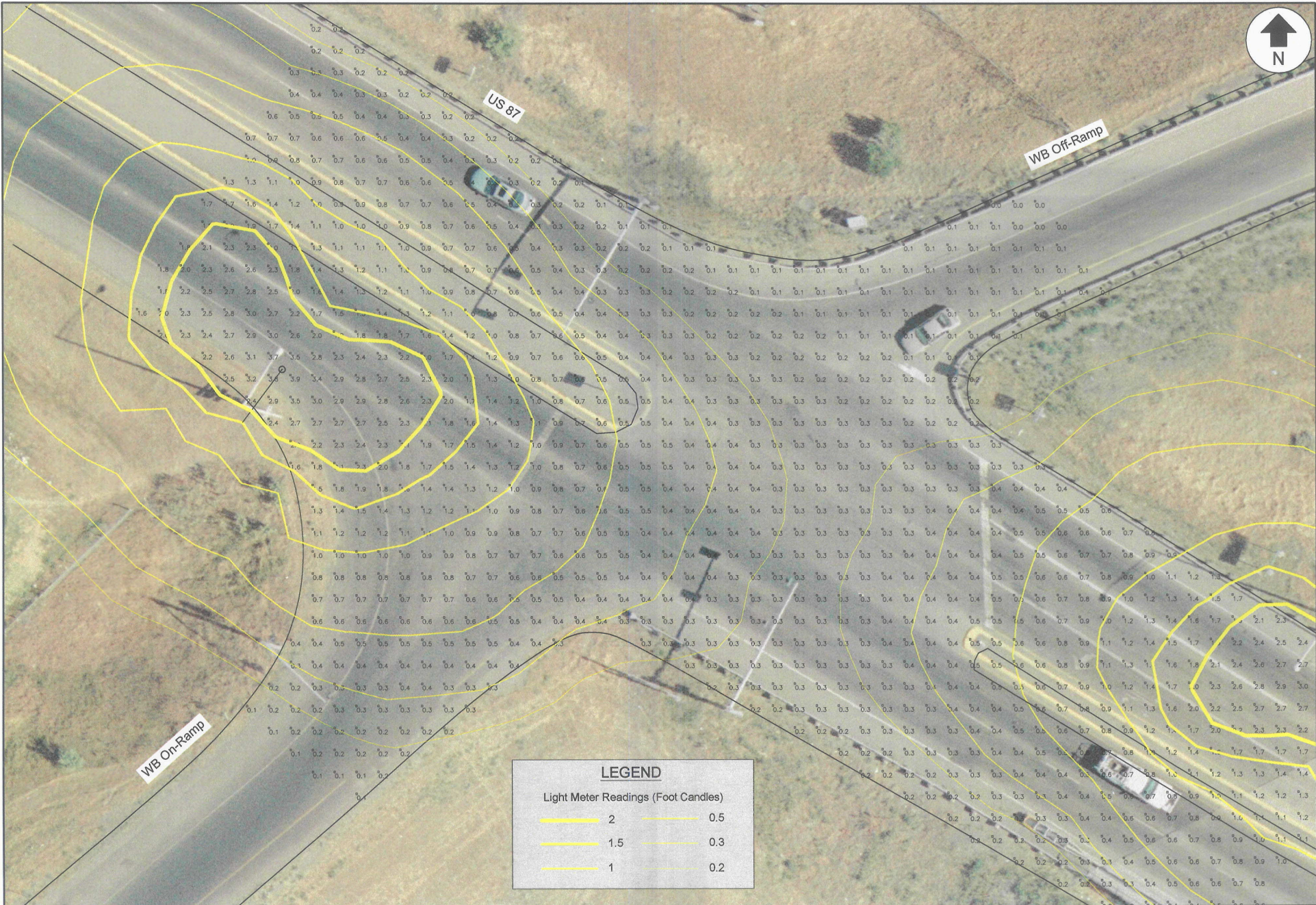
Figure G-7A







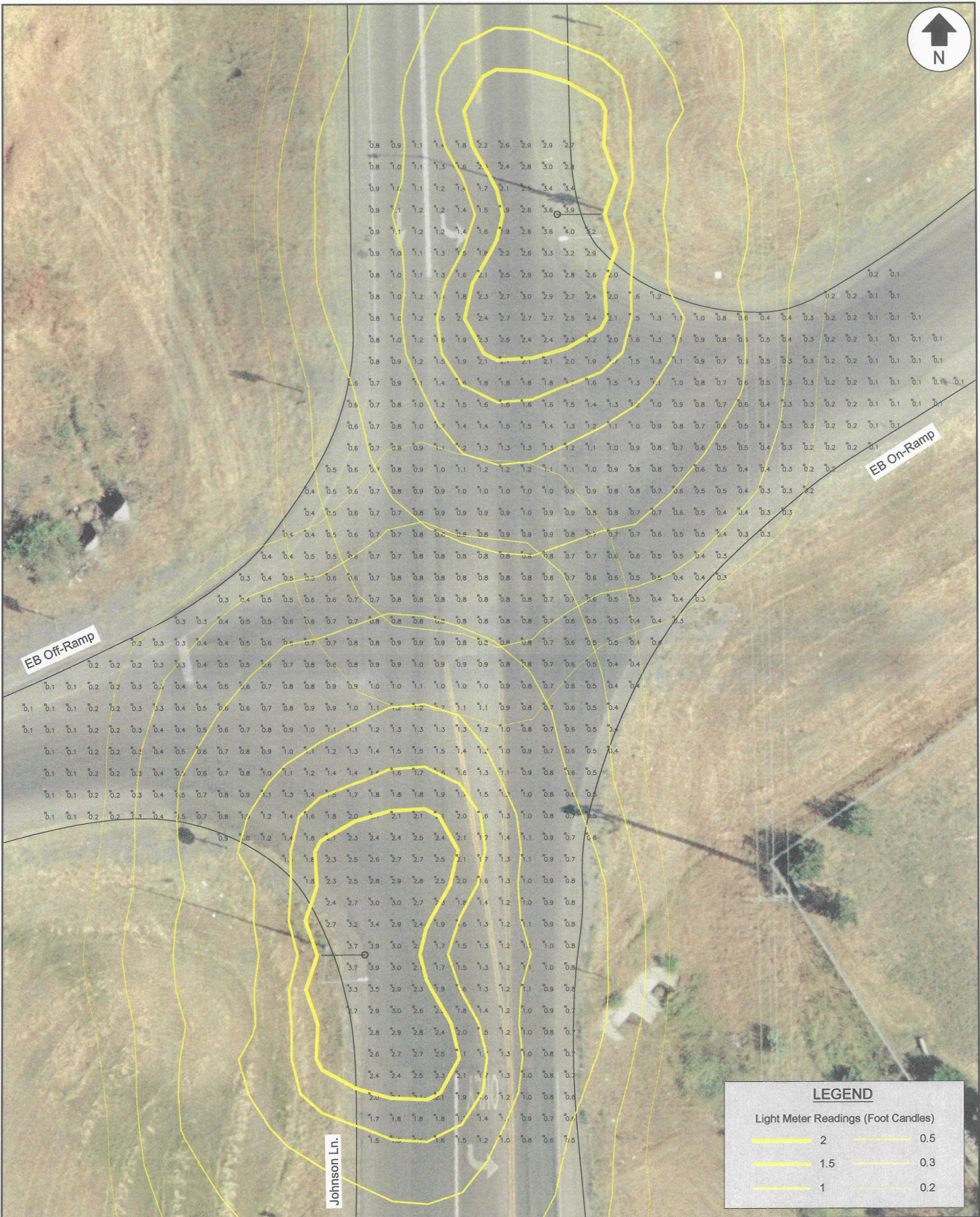
LEGEND	
Light Meter Readings (Foot Candles)	
2	0.5
1.5	0.3
1	0.2



**LEGEND**

Light Meter Readings (Foot Candles)

— 2	— 0.5
— 1.5	— 0.3
— 1	— 0.2



**LEGEND**

Light Meter Readings (Foot Candles)

2	0.5
1.5	0.3
1	0.2



