

---

## **APPENDIX D**

---

---

---

# CHECKLIST FOR FACILITY ACCESSIBILITY

District \_\_\_\_\_ Building Name Greycliff EB  
 Address I-90 EB 380.9 Date of Inventory: 4/22/2008

## Instructions for completing checklist:

- 1) YES, if element exists and complies.
- 2) NO, if element exists and does not comply. Comment on what does not comply and the reason why.
- 3) NON APPLICABLE, if element does not exist

## ADAAG 4.3.11.1 – AREAS OF RESCUE ASSISTANCE

NONE

4.3.11.1 Location and construction. An area of rescue assistance shall be a portion of a stairway landing

4.3.11.2 Size. Each area of rescue assistance shall provide at least two accessible areas each being not less than 30" by 48".

4.3.11.3 Stairway Width. Stairway adjacent to area of rescue assist. - min. clear width of 48" b/tw handrails

4.3.11.4 Two-way Communication. Method of two-way communication, visible and audible signals, between each area of rescue assistance and the primary entry.

4.3.11.5 Identification. "AREA OF RESCUE ASSISTANCE" sign displays the international symbol of accessibility. Signage installed at all inaccessible exits, with directions to rescue assistance

- Yes  No  Non Applicable at this site

Comments:

## ADAAG 4.4 – PROTRUDING OBJECTS

4.4.1 General. Objects projecting <= 4" from walls (for example, telephones) if leading edges between 27" and 80" above the finished floor for walks, halls, corridors, passageways, or aisles.

Objects mounted with their leading edges at or below 27" above the finished floor may protrude any amount. Free-standing objects mounted on posts or pylons overhang 12" maximum from 27" to 80" above ground/floor. Protruding objects shall not reduce the clear width of an accessible route or maneuvering space.

- Yes  No  Non Applicable at this site

Comments:

## ADAAG 4.7 – CURB RAMPS

4.7.1 Location. Curb ramps shall be provided wherever an accessible route crosses a curb.

YES

4.7.2 Slope. Slopes measured as shown in figures: Max curb ramp slope <= 1:12 or 8.33%. Flush and clear transitions from ramps to walks, gutters, or streets with no abrupt changes.

YES

4.7.3 Width. The minimum width of a curb ramp shall be 36", exclusive of the flared sides.

YES

4.7.4 Surface. Surfaces of curb ramps shall be firm, stable and slip resistant

YES

4.7.5 Sides of Curb Ramps. Curb ramps located where pedestrians walk across ramp, or where not protected by handrails or guardrails, must have flared sides; the maximum slope of the flare shall be 1:10. Curb ramps with returned curbs may be used where pedestrians would not normally walk across the ramp.

YES

4.7.6 Built-up Curb Ramps. Built-up curb ramps located so they do not project into vehicular traffic lanes.

YES

4.7.8 Obstructions. Curb ramps shall be located or protected to prevent their obstruction by parked vehicles.

- Yes  No  Non Applicable at this site

Comments:

## ADAAG 4.6 – PARKING AND PASSENGER LOADING ZONES

4.6.1 Minimum Number. Parking spaces required to be accessible shall comply with matrix & 4.6.2 through 4.6.4.

- Yes  No  Non Applicable at this site

Comments:

4.6.2 Location. Accessible parking spaces on shortest accessible route from parking to an accessible entrance.

- Yes  No  Non Applicable at this site

Comments: \*LONGEST ROUTE

4.6.3 Parking Spaces. Accessible parking spaces >= 96" wide. Parking access aisles part of accessible route to the building or facility entrance. Two accessible parking spaces can share aisle. Parked vehicle overhangs shall not reduce the clear width of an accessible route. Parking spaces and access aisles level with surface slopes not exceeding 1:50 (2%) in all directions.

- Yes  No  Non Applicable at this site

Comments:

4.6.4 Signage. Accessible parking spaces reserved by a sign showing the symbol of accessibility. Spaces comply with van accessible provisions. Spaces and have an additional "Van-Accessible" sign mounted below the symbol of accessibility. Signs are not obscured by a vehicle parked in spaces. See matrix: # spaces.

- Yes  No  Non Applicable at this site

Comments:

### PARKING SPACE MATRIX

Total Parking in Lot	Required Minimum Number of Accessible
1 to 25	1
26 to 50	2
51 to 75	3
76 to 100	4
101 to 150	5
151 to 200	6
201 to 300	7

# Parking Spots	
Trucks	11
Autos	12
ADA	2

## ADAAG 4.32 – FIXED OR BUILT-IN SEATING AND TABLES

4.32.4 Height of Tables or Counters. The tops of accessible tables and counters shall be from 28" to 34" above the finish floor or ground.

- Yes  No  Non Applicable at this site

Comments:

## EMERGENCY EGRESS

ADAAG 4.1.3(8) Because entrances also serve as emergency exits whose proximity to all parts of buildings and facilities is essential, it is preferable that all entrances be accessible.

- Yes  No  Non Applicable at this site

Comments:

**ADAAG 4.9 – STAIRS**

**4.9.4 Handrails.** Stairways have handrails at both sides of all stairs and have the these features:

- (1) Handrails are continuous along both sides of stairs including inside handrail on switchback or dogleg stairs
- (2) If handrails are not continuous, they extend >= 12" beyond the top riser and >= 12" plus the width of one tread beyond bottom riser. At the top, extension is parallel with the floor or ground. At bottom, handrail continues to slope for a length of one tread width from the bottom riser; the remainder of the extension shall be horizontal.
- (3) Clear space between handrails and wall is 1-1/2".
- (4) Gripping surfaces shall be uninterrupted by newel posts, other construction elements, or obstructions.
- (5) Top of handrail gripping surface shall be mounted between 34" and 38" above stair nosings.
- (6) Ends of handrails shall be either rounded or returned smoothly to floor, wall or post.
- (7) Handrails shall not rotate within their fittings.

Yes       No       **Non Applicable at this site**

Comments: **\*LONG PATHS UP RAMP WITH NO PADS AND NO RAILS**

<b>Ramps Suppment</b>	Ramps have 5 level pad at every 30 lineal feet	NO
	Ramps longer than 6 feet have railings on each side	NO
	Ramps rise no more than 30 inches for every 30 feet traveled	NO
	Accessible route always >= 36"	YES

**ADAAG 4.15 – DRINKING FOUNTAINS AND WATER COOLERS**

**4.15.1 Minimum Number.** Drinking fountains or water coolers required to be accessible shall comply.

**YES**

**4.15.2 Spout Height.** Spouts shall be no higher than **36" from** floor or ground surfaces to the spout

**NO 40"**

**4.15.3 Spout Location.** The spouts of drinking fountains and water coolers shall be at the front of the unit and shall direct the water flow in a trajectory that is parallel or nearly parallel to the front of the unit. The spout shall provide a flow of water at least 4" high so as to allow the insertion of a cup or glass under the flow of water. On an accessible drinking fountain with a round or oval bowl, the spout must be positioned so the flow of water is within 3" of the front edge of the fountain. **YES**

**4.15.4 Controls.** Unit **controls** shall be front mounted or side mounted near the front edge.

**YES**

**4.15.5 Clearances.**

(1) Wall- and post-mounted cantilevered units shall have a clear knee space between the bottom of the apron and the floor or ground at least 27" high, 30" wide, and 17" to 19" deep. Such units shall also have a minimum clear floor space **30" by 48"** to allow a person in a wheelchair to approach the unit facing forward.

**YES**

(2) Free-standing or built-in units not having a clear space under them shall have a clear floor space at least 30" by 48" that allows a person in a wheelchair to make a parallel approach to the unit.

**YES**

**4.1.3(10)(b)** Where more than one drinking fountain or water cooler is provided on a floor, 50 percent of those provided shall comply with 4.15 and shall be on an accessible route.

**Yes**       No       Non Applicable at this site

Comments:

**Sinks**

no more than 34" high?	NO 34.5/35"
at least 29" from bottom of sink to floor?	YES
30"x48" clear space in front?	YES
bottom edge of mirror no more than 40"	NO

**ADAAG 4.13 – DOORS**

**32 inch clear opening at entry**

**YES**

**4.13.8 Thresholds at Doorways.** Thresholds at doorways shall not exceed 3/4" in height for exterior sliding doors or 1/2" for other types of doors. Raised thresholds and floor level changes at accessible doorways shall be beveled with a slope no greater than 1:2. **YES**

**4.13.9 Door Hardware.** Handles, pulls, latches, locks, and other operating devices on accessible doors shall have a shape that is easy to grasp with one hand and does not require tight grasping, tight pinching, or twisting of the wrist to operate. Lever-operated mechanisms, push-type mechanisms, and U-shaped handles are acceptable designs. When sliding doors are fully open, operating hardware shall be exposed and usable from both sides. Hardware required for accessible door passage shall be mounted no higher than **48"** above finished floor. **NO-GRAB HANDLES SEE PIC ON PAPER**

**4.13.10 Door Closers.** If a door has a closer, then the sweep period of the closer shall be adjusted so that from an open position of 70 degrees, the door will take at least **3 seconds** to move to a point 3" from the latch, measured to the leading edge of the door. **YES**

**4.13.11 Door Opening Force.** The maximum force for pushing or pulling open a door shall be as follows:

- (1) Fire doors shall have the minimum opening force allowable by the appropriate administrative authority.
- (2) Other doors.
  - (a) exterior hinged doors: (Reserved)
  - (b) interior hinged doors: **5 lbf** (22.2N) **YES**
  - (c) sliding or folding doors: 5 lbf (22.2N)

These forces do not apply to the force required to retract latch bolts or disengage other devices that may hold the door in a closed position.

**4.13.12 Automatic Doors and Power-Assisted Doors.** If an automatic door is used, then it shall comply with ANSI/BHMA A156.10-1985. Slowly opening, low-powered, automatic doors shall comply with ANSI A156.19-1984. Such doors shall not open to back check faster than 3 seconds and shall require no more than 15 lbf (66.6N) to stop door movement. If a power-assisted door is used, its door-opening force shall comply with 4.13.11 and it's closing shall conform to the requirements in ANSI A156.19-1984.

Yes       No       **Non Applicable at this site**

Comments:

**ADAAG 4.14 – ENTRANCES**

**4.14.1 Minimum Number.** Entrances required to be accessible shall be part of an accessible route. Such entrances shall be connected by an accessible route to public transportation stops, to accessible parking and passenger loading zones, and to public streets or sidewalks if available. They shall also be connected by an accessible route to all accessible spaces or elements within the building or facility. **YES**

**4.1.3(8)(a)** At least 50 percent of all public entrances must be accessible. At least one must be a ground floor entrance. Public entrances are any entrances that are not loading or service entrances. In facilities subject to Title II of the ADA, all planned principal public entrances shall be included within the 50 percent of public entrances required to be accessible. This provision does not require the number of principal public entrances to exceed 50 percent of all public entrances planned for a facility. **YES**

**4.14.2 Service Entrances.** A service entrance shall not be the sole accessible entrance unless it is the only entrance to a building or facility (for example, in a factory or garage). **YES**

**4.1.3(7)(d)** Entrances which are not accessible shall have directional signage complying the ADAAG which indicate the location of the nearest accessible entrance.

Yes       No       **Non Applicable at this site**

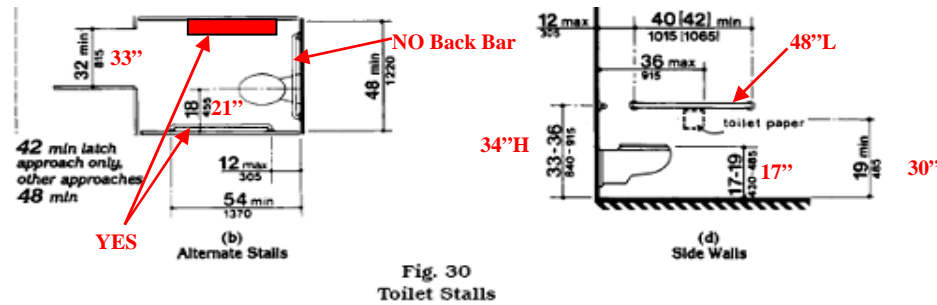
Comments:

**ADAAG 4.16 – WATER CLOSETS through ADAAG 4.26 HANDRAILS**

These sections of the ADAAG deal specifically with accessible features of restrooms, water closets, and bathing facilities.

4.1.3(11) Toilet Facilities. If toilet rooms are provided, then each public and common use toilet room shall comply with 4.22. Other toilet rooms provided for the use of occupants of specific spaces (i.e., a private toilet room for the occupant a private office) shall be adaptable. If bathing rooms are provided, then each public and common use bathroom shall comply with 4.23. Accessible toilet rooms and bathing facilities shall be on an accessible route.

- Yes
- No
- Non Applicable here
- Comments



Doorway is 32" clear?  
 Grab bars behind and on side of stall?  
 5'x5' or 3'x5.5' or 4'x5.5' clear space in front of h/c stall?

YES  
 NO-EACH SIDE  
 YES

**ADAAG 4.27 – CONTROLS AND OPERATING MECHANISMS**

4.27.2 Clear Floor Space. Clear floor space that allows a forward or a parallel approach by a person using a wheelchair shall be provided at controls, dispensers, receptacles, and other operable equipment

- Yes
  - No
  - Non Applicable at this site
- Comments:

**ADAAG 4.31 – TELEPHONES**

NONE

4.31.1 General. Public telephones required to be accessible shall comply with 4.31.

4.31.2 Clear Floor or Ground Space. A clear floor or ground space at least 30" by 48" that allows either a forward or parallel approach by a person using a wheelchair shall be provided at telephones. The clear floor or ground space shall comply. Bases, enclosures, and fixed seats shall not impede approaches to telephones by people who use wheelchairs.

4.31.3 Mounting Height. The highest operable part of the telephone shall be 48" for a forward wheelchair approach and 54" for a parallel wheelchair approach.

4.31.6 Controls. Telephones shall have pushbutton controls where service for such equipment is available.

4.31.9 Text Telephones (TTYs) Required by 4.1.

3) Equivalent facilitation may be provided. For example, a portable text telephone (TTY) may be made available in a hotel at the registration desk if it is available on a 24-hour basis for use with nearby public pay telephones. In this instance, at least one pay telephone shall comply with paragraph 2 of this section. In addition, if an acoustic coupler is used, the telephone handset cord shall be sufficiently long so as to allow connection of the text telephone (TTY) and the telephone receiver. Directional signage shall be provided and shall comply.

- Yes
- No
- Non Applicable at this site

Comments:

**ADAAG 4.30 – SIGNAGE**

4.30.1 General. Signage required to be accessible shall comply with the applicable provisions of 4.30.

NO-NONE

4.30.2 Character Proportion. Letters and numbers on signs shall have a width-to-height ratio between 3:5 and 1:1 and a stroke-width-to-height ratio between 1:5 and 1:10.

NO

4.30.3 Character Height. Characters and numbers on signs shall be sized according to the viewing distance from which they are to be read. The minimum height is measured using an upper case X. Lower case characters are permitted.

NO

4.30.4 Raised and Braille Characters and Pictorial Symbol Signs (Pictograms). Letters and numerals shall be raised 1/32" minimum, upper case, sans serif or simple serif type and shall be accompanied with Grade 2 Braille. Raised characters shall be at least 5/8" high, but no higher than 2". Pictograms shall be accompanied by the equivalent verbal description placed directly below the pictogram. The border dimension of the pictogram shall be 6" minimum in height.

NO

4.30.5 Finish and Contrast. The characters and background of signs shall be eggshell, matte, or other non-glare finish. Characters and symbols shall contrast with their background -- either light characters on a dark background or dark characters on a light background.

NO

4.30.6 Mounting Location and Height. Where permanent identification is provided for rooms and spaces, signs shall be installed on the wall adjacent to the **latch side of the door**. Where there is no wall space to the latch side of the door, including at double leaf doors, signs shall be placed on the nearest adjacent wall. Mounting height shall be **60"** above the finish floor to the centerline of the sign. Mounting location for such signage shall be so that a person may approach within 3" of signage without encountering protruding objects or standing within the swing of a door.

NO

4.30.7 Symbols of Accessibility.

(1) Facilities and elements required to be identified as accessible shall use the international symbol of accessibility. The symbol shall be displayed.

(2) Volume Control Telephones. Telephones required to have a volume control shall be identified by a sign containing a depiction of a telephone handset with radiating sound waves.

(3) Text Telephones (TTYs). Text telephones (TTYs) required shall be identified by the international TTY symbol. In addition, if a facility has a public text telephone (TTY), directional signage indicating the location of the nearest text telephone (TTY) shall be placed adjacent to all banks of telephones, which do not contain a text telephone (TTY). Such directional signage shall include the international TTY symbol. If a facility has no banks of telephones, the directional signage shall be provided at the entrance (e.g., in a building directory).

Yes

No

Non Applicable at this site

Comments:



(a) Proportions International Symbol of Accessibility

# CHECKLIST FOR FACILITY ACCESSIBILITY

District \_\_\_\_\_ Building Name Greycliff WB  
 Address I-90 WB 381 Date of Inventory: 4/22/2008

## Instructions for completing checklist:

- 1) YES, if element exists and complies.
- 2) NO, if element exists and does not comply. Comment on what does not comply and the reason why.
- 3) NON APPLICABLE, if element does not exist

## ADAAG 4.3.11.1 – AREAS OF RESCUE ASSISTANCE NONE

- 4.3.11.1 Location and construction. An area of rescue assistance shall be a portion of a stairway landing
- 4.3.11.2 Size. Each area of rescue assistance shall provide at least two accessible areas each being not less than 30" by 48".
- 4.3.11.3 Stairway Width. Stairway adjacent to area of rescue assist. - min. clear width of 48" b/tw handrails
- 4.3.11.4 Two-way Communication. Method of two-way communication, visible and audible signals, between each area of rescue assistance and the primary entry.
- 4.3.11.5 Identification. "AREA OF RESCUE ASSISTANCE" sign displays the international symbol of accessibility. Signage installed at all inaccessible exits, with directions to rescue assistance  
 Yes  No  Non Applicable at this site  
 Comments:

## ADAAG 4.4 – PROTRUDING OBJECTS

- 4.4.1 General. Objects projecting <= 4" from walls (for example, telephones) if leading edges between 27" and 80" above the finished floor for walks, halls, corridors, passageways, or aisles.
- Objects mounted with their leading edges at or below 27" above the finished floor may protrude any amount. Free-standing objects mounted on posts or pylons overhang 12" maximum from 27" to 80" above ground/floor. Protruding objects shall not reduce the clear width of an accessible route or maneuvering space.  
 **Yes**  No  Non Applicable at this site  
 Comments:

## ADAAG 4.7 – CURB RAMPS

- 4.7.1 Location. Curb ramps shall be provided wherever an accessible route crosses a curb. YES
- 4.7.2 Slope. Slopes measured as shown in figures: Max curb ramp slope <= 1:12 or 8.33%. Flush and clear transitions from ramps to walks, gutters, or streets with no abrupt changes. YES
- 4.7.3 Width. The minimum width of a curb ramp shall be 36", exclusive of the flared sides. YES
- 4.7.4 Surface. Surfaces of curb ramps shall be firm, stable and slip resistant YES
- 4.7.5 Sides of Curb Ramps. Curb ramps located where pedestrians walk across ramp, or where not protected by handrails or guardrails, must have flared sides; the maximum slope of the flare shall be 1:10. Curb ramps with returned curbs may be used where pedestrians would not normally walk across the ramp. YES
- 4.7.6 Built-up Curb Ramps. Built-up curb ramps located so they do not project into vehicular traffic lanes. YES
- 4.7.8 Obstructions. Curb ramps shall be located or protected to prevent their obstruction by parked vehicles.  
 **Yes**  No  Non Applicable at this site  
 Comments:

## ADAAG 4.6 – PARKING AND PASSENGER LOADING ZONES

- 4.6.1 Minimum Number. Parking spaces required to be accessible shall comply with matrix & 4.6.2 through 4.6.4.  
 **Yes**  No  Non Applicable at this site  
 Comments:
- 4.6.2 Location. Accessible parking spaces on shortest accessible route from parking to an accessible entrance.  
 Yes  **No**  Non Applicable at this site  
 Comments:-AT ENDS OF PARKING LOTS
- 4.6.3 Parking Spaces. Accessible parking spaces >= 96" wide. Parking access aisles part of accessible route to the building or facility entrance. Two accessible parking spaces can share aisle. Parked vehicle overhangs shall not reduce the clear width of an accessible route. Parking spaces and access aisles level with surface slopes not exceeding 1:50 (2%) in all directions.  
 **Yes**  No  Non Applicable at this site  
 Comments:
- 4.6.4 Signage. Accessible parking spaces reserved by a sign showing the symbol of accessibility. Spaces comply with van accessible provisions. Spaces and have an additional "Van-Accessible" sign mounted below the symbol of accessibility. Signs are not obscured by a vehicle parked in spaces. See matrix: # spaces.  
 **Yes**  No  Non Applicable at this site  
 Comments:

### PARKING SPACE MATRIX

Total Parking in Lot	Required Minimum Number of Accessible
1 to 25	1
26 to 50	2
51 to 75	3
76 to 100	4
101 to 150	5
151 to 200	6
201 to 300	7

# Parking Spots	
Trucks	10
Autos	10
ADA	2

## ADAAG 4.32 – FIXED OR BUILT-IN SEATING AND TABLES

- 4.32.4 Height of Tables or Counters. The tops of accessible tables and counters shall be from 28" to 34" above the finish floor or ground.  
 **Yes**  No  Non Applicable at this site  
 Comments:

## EMERGENCY EGRESS

- ADAAG 4.1.3(8) Because entrances also serve as emergency exits whose proximity to all parts of buildings and facilities is essential, it is preferable that all entrances be accessible.  
 **Yes**  No  Non Applicable at this site  
 Comments:



**ADAAG 4.9 – STAIRS**

- 4.9.4 Handrails.** Stairways have handrails at both sides of all stairs and have the these features:
- (1) Handrails are continuous along both sides of stairs including inside handrail on switchback or dogleg stairs
  - (2) If handrails are not continuous, they extend >= 12" beyond the top riser and >= 12" plus the width of one tread beyond bottom riser. At the top, extension is parallel with the floor or ground. At bottom, handrail continues to slope for a length of one tread width from the bottom riser; the remainder of the extension shall be horizontal.
  - (3) Clear space between handrails and wall is 1-1/2".
  - (4) Gripping surfaces shall be uninterrupted by newel posts, other construction elements, or obstructions.
  - (5) Top of handrail gripping surface shall be mounted between 34" and 38" above stair nosings.
  - (6) Ends of handrails shall be either rounded or returned smoothly to floor, wall or post.
  - (7) Handrails shall not rotate within their fittings.

Yes       No       Non Applicable at this site

Comments:NO TO (2) YES TO THE REST

**Ramps Supplement**      Ramps have 5 level pad at every 30 lineal feet  
 Ramps longer than 6 feet have railings on each side  
 Ramps rise no more than 30 inches for every 30 feet traveled  
 Accessible route always >= 36"

NO
NO
NO >30"
YES

**ADAAG 4.15 – DRINKING FOUNTAINS AND WATER COOLERS**

**4.15.1 Minimum Number.** Drinking fountains or water coolers required to be accessible shall comply.

YES

**4.15.2 Spout Height.** Spouts shall be no higher than 36" from floor or ground surfaces to the spout

YES

**4.15.3 Spout Location.** The spouts of drinking fountains and water coolers shall be at the front of the unit and shall direct the water flow in a trajectory that is parallel or nearly parallel to the front of the unit. The spout shall provide a flow of water at least 4" high so as to allow the insertion of a cup or glass under the flow of water. On an accessible drinking fountain with a round or oval bowl, the spout must be positioned so the flow of water is within 3" of the front edge of the fountain.

YES

**4.15.4 Controls.** Unit controls shall be front mounted or side mounted near the front edge.

YES

**4.15.5 Clearances.**

(1) Wall- and post-mounted cantilevered units shall have a clear knee space between the bottom of the apron and the floor or ground at least 27" high, 30" wide, and 17" to 19" deep. Such units shall also have a minimum clear floor space 30" by 48" to allow a person in a wheelchair to approach the unit facing forward.

YES

(2) Free-standing or built-in units not having a clear space under them shall have a clear floor space at least 30" by 48" that allows a person in a wheelchair to make a parallel approach to the unit.

YES

**4.1.3(10)(b)** Where more than one drinking fountain or water cooler is provided on a floor, 50 percent of those provided shall comply with 4.15 and shall be on an accessible route.

Yes       No       Non Applicable at this site

Comments:

**Sinks**

no more than 34" high?  
 at least 29" from bottom of sink to floor?  
 30"x48" clear space in front?  
 bottom edge of mirror no more than 40"

NO 35"
YES 31"
YES
NO 41.5"

**ADAAG 4.13 – DOORS**

**32 inch clear opening at entry**

YES 32.5"

**4.13.8 Thresholds at Doorways.** Thresholds at doorways shall not exceed 3/4" in height for exterior sliding doors or 1/2" for other types of doors. Raised thresholds and floor level changes at accessible doorways shall be beveled with a slope no greater than 1:2.

**4.13.9 Door Hardware.** Handles, pulls, latches, locks, and other operating devices on accessible doors shall have a shape that is easy to grasp with one hand and does not require tight grasping, tight pinching, or twisting of the wrist to operate. Lever-operated mechanisms, push-type mechanisms, and U-shaped handles are acceptable designs. When sliding doors are fully open, operating hardware shall be exposed and usable from both sides. Hardware required for accessible door passage shall be mounted no higher than 48" above finished floor.

NO SEE PICTURE ON PAPER

**4.13.10 Door Closers.** If a door has a closer, then the sweep period of the closer shall be adjusted so that from an open position of 70 degrees, the door will take at least 3 seconds to move to a point 3" from the latch, measured to the leading edge of the door.

YES

**4.13.11 Door Opening Force.** The maximum force for pushing or pulling open a door shall be as follows:

- (1) Fire doors shall have the minimum opening force allowable by the appropriate administrative authority.
- (2) Other doors.
  - (a) exterior hinged doors: (Reserved)
  - (b) interior hinged doors: 5 lbf (22.2N)      YES
  - (c) sliding or folding doors: 5 lbf (22.2N)

These forces do not apply to the force required to retract latch bolts or disengage other devices that may hold the door in a closed position.

**4.13.12 Automatic Doors and Power-Assisted Doors.** If an automatic door is used, then it shall comply with ANSI/BHMA A156.10-1985. Slowly opening, low-powered, automatic doors shall comply with ANSI A156.19-1984. Such doors shall not open to back check faster than 3 seconds and shall require no more than 15 lbf (66.6N) to stop door movement. If a power-assisted door is used, its door-opening force shall comply with 4.13.11 and it's closing shall conform to the requirements in ANSI A156.19-1984.

Yes       No       Non Applicable at this site

Comments:

**ADAAG 4.14 – ENTRANCES**

**4.14.1 Minimum Number.** Entrances required to be accessible shall be part of an accessible route. Such entrances shall be connected by an accessible route to public transportation stops, to accessible parking and passenger loading zones, and to public streets or sidewalks if available. They shall also be connected by an accessible route to all accessible spaces or elements within the building or facility.

YES

**4.1.3(8)(a)** At least 50 percent of all public entrances must be accessible. At least one must be a ground floor entrance. Public entrances are any entrances that are not loading or service entrances. In facilities subject to Title II of the ADA, all planned principal public entrances shall be included within the 50 percent of public entrances required to be accessible. This provision does not require the number of principal public entrances to exceed 50 percent of all public entrances planned for a facility.

YES

**4.14.2 Service Entrances.** A service entrance shall not be the sole accessible entrance unless it is the only entrance to a building or facility (for example, in a factory or garage).

YES

**4.1.3(7)(d)** Entrances which are not accessible shall have directional signage complying the ADAAG which indicate the location of the nearest accessible entrance.

YES

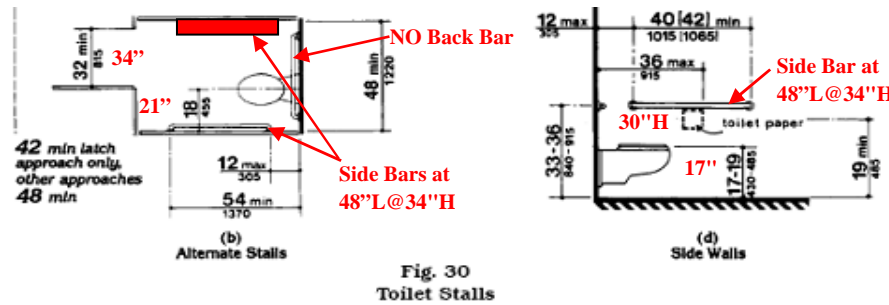
Yes       No       Non Applicable at this site

**ADAAG 4.16 – WATER CLOSETS through ADAAG 4.26 HANDRAILS**

These sections of the ADAAG deal specifically with accessible features of restrooms, water closets, and bathing facilities.

4.1.3(11) Toilet Facilities. If toilet rooms are provided, then each public and common use toilet room shall comply with 4.22. Other toilet rooms provided for the use of occupants of specific spaces (i.e., a private toilet room for the occupant a private office) shall be adaptable. If bathing rooms are provided, then each public and common use bathroom shall comply with 4.23. Accessible toilet rooms and bathing facilities shall be on an accessible route.

- Yes
- No
- Non Applicable here
- Comments



Doorway is 32" clear?  
 Grab bars behind and on side of stall?  
 5'x5' or 3'x5.5' or 4'x5.5' clear space in front of h/c stall?

YES  
 NO BOTH SIDES  
 YES

**ADAAG 4.27 – CONTROLS AND OPERATING MECHANISMS**

4.27.2 Clear Floor Space. Clear floor space that allows a forward or a parallel approach by a person using a wheelchair shall be provided at controls, dispensers, receptacles, and other operable equipment

- Yes
  - No
  - Non Applicable at this site
- Comments:

**ADAAG 4.31 – TELEPHONES**

NONE

4.31.1 General. Public telephones required to be accessible shall comply with 4.31.

4.31.2 Clear Floor or Ground Space. A clear floor or ground space at least 30" by 48" that allows either a forward or parallel approach by a person using a wheelchair shall be provided at telephones. The clear floor or ground space shall comply. Bases, enclosures, and fixed seats shall not impede approaches to telephones by people who use wheelchairs.

4.31.3 Mounting Height. The highest operable part of the telephone shall be 48" for a forward wheelchair approach and 54" for a parallel wheelchair approach.

4.31.6 Controls. Telephones shall have pushbutton controls where service for such equipment is available.

4.31.9 Text Telephones (TTYs) Required by 4.1.

3) Equivalent facilitation may be provided. For example, a portable text telephone (TTY) may be made available in a hotel at the registration desk if it is available on a 24-hour basis for use with nearby public pay telephones. In this instance, at least one pay telephone shall comply with paragraph 2 of this section. In addition, if an acoustic coupler is used, the telephone handset cord shall be sufficiently long so as to allow connection of the text telephone (TTY) and the telephone receiver. Directional signage shall be provided and shall comply.

- Yes
- No
- Non Applicable at this site

Comments:

**ADAAG 4.30 – SIGNAGE**

NO SIGNAGE

4.30.1 General. Signage required to be accessible shall comply with the applicable provisions of 4.30.

4.30.2 Character Proportion. Letters and numbers on signs shall have a width-to-height ratio between 3:5 and 1:1 and a stroke-width-to-height ratio between 1:5 and 1:10.

4.30.3 Character Height. Characters and numbers on signs shall be sized according to the viewing distance from which they are to be read. The minimum height is measured using an upper case X. Lower case characters are permitted.

4.30.4 Raised and Braille Characters and Pictorial Symbol Signs (Pictograms). Letters and numerals shall be raised 1/32" minimum, upper case, sans serif or simple serif type and shall be accompanied with Grade 2 Braille. Raised characters shall be at least 5/8" high, but no higher than 2". Pictograms shall be accompanied by the equivalent verbal description placed directly below the pictogram. The border dimension of the pictogram shall be 6" minimum in height.

4.30.5 Finish and Contrast. The characters and background of signs shall be eggshell, matte, or other non-glare finish. Characters and symbols shall contrast with their background -- either light characters on a dark background or dark characters on a light background.

4.30.6 Mounting Location and Height. Where permanent identification is provided for rooms and spaces, signs shall be installed on the wall adjacent to the **latch side of the door**. Where there is no wall space to the latch side of the door, including at double leaf doors, signs shall be placed on the nearest adjacent wall. Mounting height shall be **60"** above the finish floor to the centerline of the sign. Mounting location for such signage shall be so that a person may approach within 3" of signage without encountering protruding objects or standing within the swing of a door.

4.30.7 Symbols of Accessibility.

- (1) Facilities and elements required to be identified as accessible shall use the international symbol of accessibility. The symbol shall be displayed.
- (2) Volume Control Telephones. Telephones required to have a volume control shall be identified by a sign containing a depiction of a telephone handset with radiating sound waves.
- (3) Text Telephones (TTYs). Text telephones (TTYs) required shall be identified by the international TTY symbol. In addition, if a facility has a public text telephone (TTY), directional signage indicating the location of the nearest text telephone (TTY) shall be placed adjacent to all banks of telephones, which do not contain a text telephone (TTY). Such directional signage shall include the international TTY symbol. If a facility has no banks of telephones, the directional signage shall be provided at the entrance (e.g., in a building directory).

Yes-ON ADA PARKING SPACE

- No
- Non Applicable at this site

Comments:



(a) Proportions International Symbol of Accessibility



# CHECKLIST FOR FACILITY ACCESSIBILITY

District \_\_\_\_\_ Building Name Custer EB  
 Address I-94 RP 41.3 Date of Inventory: 4/24/2008

## Instructions for completing checklist:

- 1) YES, if element exists and complies.
- 2) NO, if element exists and does not comply. Comment on what does not comply and the reason why.
- 3) NON APPLICABLE, if element does not exist

## ADAAG 4.3.11.1 – AREAS OF RESCUE ASSISTANCE

4.3.11.1 Location and construction. An area of rescue assistance shall be a portion of a stairway landing

4.3.11.2 Size. Each area of rescue assistance shall provide at least two accessible areas each being not less than 30" by 48".

4.3.11.3 Stairway Width. Stairway adjacent to area of rescue assist. - min. clear width of 48" b/tw handrails

4.3.11.4 Two-way Communication. Method of two-way communication, visible and audible signals, between each area of rescue assistance and the primary entry.

4.3.11.5 Identification. "AREA OF RESCUE ASSISTANCE" sign displays the international symbol of accessibility. Signage installed at all inaccessible exits, with directions to rescue assistance

- Yes  No  **Non Applicable at this site**

Comments:

## ADAAG 4.4 – PROTRUDING OBJECTS

4.4.1 General. Objects projecting <= 4" from walls (for example, telephones) if leading edges between 27" and 80" above the finished floor for walks, halls, corridors, passageways, or aisles. **YES**

Objects mounted with their leading edges at or below 27" above the finished floor may protrude any amount. Free-standing objects mounted on posts or pylons overhang 12" maximum from 27" to 80" above ground/floor. Protruding objects shall not reduce the clear width of an accessible route or maneuvering space.

- Yes**  No  Non Applicable at this site

Comments:

## ADAAG 4.7 – CURB RAMPS

4.7.1 Location. Curb ramps shall be provided wherever an accessible route crosses a curb.

4.7.2 Slope. Slopes measured as shown in figures: Max curb ramp slope <= 1:12 or 8.33%. Flush and clear transitions from ramps to walks, gutters, or streets with no abrupt changes.

4.7.3 Width. The minimum width of a curb ramp shall be 36", exclusive of the flared sides.

4.7.4 Surface. Surfaces of curb ramps shall be firm, stable and slip resistant

4.7.5 Sides of Curb Ramps. Curb ramps located where pedestrians walk across ramp, or where not protected by handrails or guardrails, must have flared sides; the maximum slope of the flare shall be 1:10. Curb ramps with returned curbs may be used where pedestrians would not normally walk across the ramp.

4.7.6 Built-up Curb Ramps. Built-up curb ramps located so they do not project into vehicular traffic lanes.

4.7.8 Obstructions. Curb ramps shall be located or protected to prevent their obstruction by parked vehicles.

- Yes  No  Non Applicable at this site

Comments:

## ADAAG 4.6 – PARKING AND PASSENGER LOADING ZONES

4.6.1 Minimum Number. Parking spaces required to be accessible shall comply with matrix & 4.6.2 through 4.6.4.

- Yes**  No  Non Applicable at this site

Comments:

4.6.2 Location. Accessible parking spaces on shortest accessible route from parking to an accessible entrance.

- Yes  **No**  Non Applicable at this site

Comments: **\*FARTHEST DISTANCE, BUT WITH RAISED SITE NEED RAMPS**

4.6.3 Parking Spaces. Accessible parking spaces >= 96" wide. Parking access aisles part of accessible route to the building or facility entrance. Two accessible parking spaces can share aisle. Parked vehicle overhangs shall not reduce the clear width of an accessible route. Parking spaces and access aisles level with surface slopes not exceeding 1:50 (2%) in all directions.

- Yes**  No  Non Applicable at this site

Comments:

4.6.4 Signage. Accessible parking spaces reserved by a sign showing the symbol of accessibility. Spaces comply with van accessible provisions. Spaces and have an additional "Van-Accessible" sign mounted below the symbol of accessibility. Signs are not obscured by a vehicle parked in spaces. See matrix: # spaces.

- Yes**  No  Non Applicable at this site

Comments:

### PARKING SPACE MATRIX

Total Parking in Lot	Required Minimum Number of Accessible
<b>1 to 25</b>	<b>1</b>
26 to 50	2
51 to 75	3
76 to 100	4
101 to 150	5
151 to 200	6
201 to 300	7

# Parking Spots	
Trucks	9
Autos	14
ADA	4

## ADAAG 4.32 – FIXED OR BUILT-IN SEATING AND TABLES

4.32.4 Height of Tables or Counters. The tops of accessible tables and counters shall be from 28" to 34" above the finish floor or ground.

- Yes**  No  Non Applicable at this site

Comments:

## EMERGENCY EGRESS

ADAAG 4.1.3(8) Because entrances also serve as emergency exits whose proximity to all parts of buildings and facilities is essential, it is preferable that all entrances be accessible.

- Yes  No  Non Applicable at this site

Comments:

## ADAAG 4.9 – STAIRS

**4.9.4 Handrails.** Stairways have handrails at both sides of all stairs and have the these features:

- (1) Handrails are continuous along both sides of stairs including inside handrail on switchback or dogleg stairs
- (2) If handrails are not continuous, they extend  $\geq 12$ " beyond the top riser and  $\geq 12$ " plus the width of one tread beyond bottom riser. At the top, extension is parallel with the floor or ground. At bottom, handrail continues to slope for a length of one tread width from the bottom riser; the remainder of the extension shall be horizontal.
- (3) Clear space between handrails and wall is 1-1/2".
- (4) Gripping surfaces shall be uninterrupted by newel posts, other construction elements, or obstructions.
- (5) Top of handrail gripping surface shall be mounted between 34" and 38" above stair nosings.
- (6) Ends of handrails shall be either rounded or returned smoothly to floor, wall or post.
- (7) Handrails shall not rotate within their fittings.

Yes  **No**  Non Applicable at this site

**Comments:** \*SINGLE RAILING, NO HOOPS

### Ramps Supplement

Ramps have 5 level pad at every 30 lineal feet  
Ramps longer than 6 feet have railings on each side  
Ramps rise no more than 30 inches for every 30 feet traveled  
Accessible route always  $\geq 36$ "

NO
>30

## ADAAG 4.15 – DRINKING FOUNTAINS AND WATER COOLERS

**4.15.1 Minimum Number.** Drinking fountains or water coolers required to be accessible shall comply.

YES

**4.15.2 Spout Height.** Spouts shall be no higher than **36"** from floor or ground surfaces to the spout

YES

**4.15.3 Spout Location.** The spouts of drinking fountains and water coolers shall be at the front of the unit and shall direct the water flow in a trajectory that is parallel or nearly parallel to the front of the unit. The spout shall provide a flow of water at least 4" high so as to allow the insertion of a cup or glass under the flow of water. On an accessible drinking fountain with a round or oval bowl, the spout must be positioned so the flow of water is within 3" of the front edge of the fountain.

YES

**4.15.4 Controls.** Unit **controls** shall be front mounted or side mounted near the front edge.

YES

**4.15.5 Clearances.**

(1) Wall- and post-mounted cantilevered units shall have a clear knee space between the bottom of the apron and the floor or ground at least 27" high, 30" wide, and 17" to 19" deep. Such units shall also have a minimum clear floor space **30" by 48"** to allow a person in a wheelchair to approach the unit facing forward.

YES

(2) Free-standing or built-in units not having a clear space under them shall have a clear floor space at least 30" by 48" that allows a person in a wheelchair to make a parallel approach to the unit.

YES

**4.1.3(10)(b)** Where more than one drinking fountain or water cooler is provided on a floor, 50 percent of those provided shall comply with 4.15 and shall be on an accessible route.

Yes  No  Non Applicable at this site

Comments:

### Sinks

no more than 34" high?  
at least 29" from bottom of sink to floor?  
30"x48" clear space in front?  
bottom edge of mirror no more than 40"

34.5"
29.5"
41"

## ADAAG 4.13 – DOORS

**32 inch clear opening at entry**

**4.13.8 Thresholds at Doorways.** Thresholds at doorways shall not exceed 3/4" in height for exterior sliding doors or 1/2" for other types of doors. Raised thresholds and floor level changes at accessible doorways shall be beveled with a slope no greater than 1:2.

YES

**4.13.9 Door Hardware.** Handles, pulls, latches, locks, and other operating devices on accessible doors shall have a shape that is easy to grasp with one hand and does not require tight grasping, tight pinching, or twisting of the wrist to operate. Lever-operated mechanisms, push-type mechanisms, and U-shaped handles are acceptable designs. When sliding doors are fully open, operating hardware shall be exposed and usable from both sides. Hardware required for accessible door passage shall be mounted no higher than **48"** above finished floor.

**D HANDLES**

**4.13.10 Door Closers.** If a door has a closer, then the sweep period of the closer shall be adjusted so that from an open position of 70 degrees, the door will take at least **3 seconds** to move to a point 3" from the latch, measured to the leading edge of the door.

NO

**4.13.11 Door Opening Force.** The maximum force for pushing or pulling open a door shall be as follows:

- (1) Fire doors shall have the minimum opening force allowable by the appropriate administrative authority.
- (2) Other doors.

- (a) exterior hinged doors: (Reserved)
- (b) interior hinged doors: **5 lbf** (22.2N)
- (c) sliding or folding doors: 5 lbf (22.2N)

NO

These forces do not apply to the force required to retract latch bolts or disengage other devices that may hold the door in a closed position.

**4.13.12 Automatic Doors and Power-Assisted Doors.** If an automatic door is used, then it shall comply with ANSI/BHMA A156.10-1985. Slowly opening, low-powered, automatic doors shall comply with ANSI A156.19-1984. Such doors shall not open to back check faster than 3 seconds and shall require no more than 15 lbf (66.6N) to stop door movement. If a power-assisted door is used, its door-opening force shall comply with 4.13.11 and it's closing shall conform to the requirements in ANSI A156.19-1984.

Yes  No  **Non Applicable at this site**

Comments:

## ADAAG 4.14 – ENTRANCES

**4.14.1 Minimum Number.** Entrances required to be accessible shall be part of an accessible route. Such entrances shall be connected by an accessible route to public transportation stops, to accessible parking and passenger loading zones, and to public streets or sidewalks if available. They shall also be connected by an accessible route to all accessible spaces or elements within the building or facility.

YES

**4.1.3(8)(a)** At least 50 percent of all public entrances must be accessible. At least one must be a ground floor entrance. Public entrances are any entrances that are not loading or service entrances. In facilities subject to Title II of the ADA, all planned principal public entrances shall be included within the 50 percent of public entrances required to be accessible. This provision does not require the number of principal public entrances to exceed 50 percent of all public entrances planned for a facility.

YES

**4.14.2 Service Entrances.** A service entrance shall not be the sole accessible entrance unless it is the only entrance to a building or facility (for example, in a factory or garage).

YES

**4.1.3(7)(d)** Entrances which are not accessible shall have directional signage complying the ADAAG which indicate the location of the nearest accessible entrance.

Yes

Comments:

No

**Non Applicable at this site**

**ADAAG 4.16 – WATER CLOSETS through ADAAG 4.26 HANDRAILS**

These sections of the ADAAG deal specifically with accessible features of restrooms, water closets, and bathing facilities.

4.1.3(11) Toilet Facilities. If toilet rooms are provided, then each public and common use toilet room shall comply with 4.22. Other toilet rooms provided for the use of occupants of specific spaces (i.e., a private toilet room for the occupant a private office) shall be adaptable. If bathing rooms are provided, then each public and common use bathroom shall comply with 4.23. Accessible toilet rooms and bathing facilities shall be on an accessible route.

- Yes
- No**
- Non Applicable here
- Comments

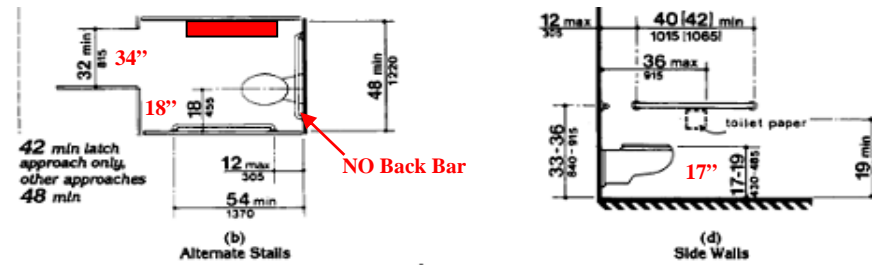


Fig. 30 Toilet Stalls

**\*STALL IS ONLY 42" WIDE**

Doorway is 32" clear?  
 Grab bars behind and on side of stall?  
 5'x5' or 3'x5.5' or 4'x5.5' clear space in front of h/c stall?

- YES**
- NO 2 SIDES ONLY**
- YES**

**ADAAG 4.27 – CONTROLS AND OPERATING MECHANISMS**

4.27.2 Clear Floor Space. Clear floor space that allows a forward or a parallel approach by a person using a wheelchair shall be provided at controls, dispensers, receptacles, and other operable equipment

- Yes**
  - No
  - Non Applicable at this site
- Comments:

**ADAAG 4.31 – TELEPHONES**

**NONE**

4.31.1 General. Public telephones required to be accessible shall comply with 4.31.

4.31.2 Clear Floor or Ground Space. A clear floor or ground space at least 30" by 48" that allows either a forward or parallel approach by a person using a wheelchair shall be provided at telephones. The clear floor or ground space shall comply. Bases, enclosures, and fixed seats shall not impede approaches to telephones by people who use wheelchairs.

4.31.3 Mounting Height. The highest operable part of the telephone shall be 48" for a forward wheelchair approach and 54" for a parallel wheelchair approach.

4.31.6 Controls. Telephones shall have pushbutton controls where service for such equipment is available.

4.31.9 Text Telephones (TTYs) Required by 4.1.

3) Equivalent facilitation may be provided. For example, a portable text telephone (TTY) may be made available in a hotel at the registration desk if it is available on a 24-hour basis for use with nearby public pay telephones. In this instance, at least one pay telephone shall comply with paragraph 2 of this section. In addition, if an acoustic coupler is used, the telephone handset cord shall be sufficiently long so as to allow connection of the text telephone (TTY) and the telephone receiver. Directional signage shall be provided and shall comply.

- Yes
- No
- Non Applicable at this site**

Comments:

**ADAAG 4.30 – SIGNAGE**

**\*NONE AT DOORS**

4.30.1 General. Signage required to be accessible shall comply with the applicable provisions of 4.30.

4.30.2 Character Proportion. Letters and numbers on signs shall have a width-to-height ratio between 3:5 and 1:1 and a stroke-width-to-height ratio between 1:5 and 1:10.

4.30.3 Character Height. Characters and numbers on signs shall be sized according to the viewing distance from which they are to be read. The minimum height is measured using an upper case X. Lower case characters are permitted.

4.30.4 Raised and Braille Characters and Pictorial Symbol Signs (Pictograms). Letters and numerals shall be raised 1/32" minimum, upper case, sans serif or simple serif type and shall be accompanied with Grade 2 Braille. Raised characters shall be at least 5/8" high, but no higher than 2". Pictograms shall be accompanied by the equivalent verbal description placed directly below the pictogram. The border dimension of the pictogram shall be 6" minimum in height.

4.30.5 Finish and Contrast. The characters and background of signs shall be eggshell, matte, or other non-glare finish. Characters and symbols shall contrast with their background -- either light characters on a dark background or dark characters on a light background.

4.30.6 Mounting Location and Height. Where permanent identification is provided for rooms and spaces, signs shall be installed on the wall adjacent to the **latch side of the door**. Where there is no wall space to the latch side of the door, including at double leaf doors, signs shall be placed on the nearest adjacent wall. Mounting height shall be **60"** above the finish floor to the centerline of the sign. Mounting location for such signage shall be so that a person may approach within 3" of signage without encountering protruding objects or standing within the swing of a door.

4.30.7 Symbols of Accessibility.

- (1) Facilities and elements required to be identified as accessible shall use the international symbol of accessibility. The symbol shall be displayed.
- (2) Volume Control Telephones. Telephones required to have a volume control shall be identified by a sign containing a depiction of a telephone handset with radiating sound waves.
- (3) Text Telephones (TTYs). Text telephones (TTYs) required shall be identified by the international TTY symbol. In addition, if a facility has a public text telephone (TTY), directional signage indicating the location of the nearest text telephone (TTY) shall be placed adjacent to all banks of telephones, which do not contain a text telephone (TTY). Such directional signage shall include the international TTY symbol. If a facility has no banks of telephones, the directional signage shall be provided at the entrance (e.g., in a building directory).

**Yes-ON PARKING SIGN**

**No-ON ENTRY DOORS**

Non Applicable at this site

Comments:



(a) Proportions International Symbol of Accessibility

# CHECKLIST FOR FACILITY ACCESSIBILITY

District \_\_\_\_\_ Building Name Custer WB RA  
 Address I-94 38.2 Date of Inventory: 4/24/2008

## Instructions for completing checklist:

- 1) YES, if element exists and complies.
- 2) NO, if element exists and does not comply. Comment on what does not comply and the reason why.
- 3) NON APPLICABLE, if element does not exist

## ADAAG 4.3.11.1 – AREAS OF RESCUE ASSISTANCE

4.3.11.1 Location and construction. An area of rescue assistance shall be a portion of a stairway landing

4.3.11.2 Size. Each area of rescue assistance shall provide at least two accessible areas each being not less than 30" by 48".

4.3.11.3 Stairway Width. Stairway adjacent to area of rescue assist. - min. clear width of 48" b/tw handrails

4.3.11.4 Two-way Communication. Method of two-way communication, visible and audible signals, between each area of rescue assistance and the primary entry.

4.3.11.5 Identification. "AREA OF RESCUE ASSISTANCE" sign displays the international symbol of accessibility. Signage installed at all inaccessible exits, with directions to rescue assistance

- Yes  No  **Non Applicable at this site**

Comments:

## ADAAG 4.4 – PROTRUDING OBJECTS

4.4.1 General. Objects projecting <= 4" from walls (for example, telephones) if leading edges between 27" and 80" above the finished floor for walks, halls, corridors, passageways, or aisles. **YES**

Objects mounted with their leading edges at or below 27" above the finished floor may protrude any amount. Free-standing objects mounted on posts or pylons overhang 12" maximum from 27" to 80" above ground/floor. Protruding objects shall not reduce the clear width of an accessible route or maneuvering space.

- Yes**  No  Non Applicable at this site

Comments:

## ADAAG 4.7 – CURB RAMPS

4.7.1 Location. Curb ramps shall be provided wherever an accessible route crosses a curb. **YES**

4.7.2 Slope. Slopes measured as shown in figures: Max curb ramp slope <= 1:12 or 8.33%. Flush and clear transitions from ramps to walks, gutters, or streets with no abrupt changes. **YES**

4.7.3 Width. The minimum width of a curb ramp shall be 36", exclusive of the flared sides. **YES**

4.7.4 Surface. Surfaces of curb ramps shall be firm, stable and slip resistant **YES**

4.7.5 Sides of Curb Ramps. Curb ramps located where pedestrians walk across ramp, or where not protected by handrails or guardrails, must have flared sides; the maximum slope of the flare shall be 1:10. Curb ramps with returned curbs may be used where pedestrians would not normally walk across the ramp. **YES**

4.7.6 Built-up Curb Ramps. Built-up curb ramps located so they do not project into vehicular traffic lanes. **YES**

4.7.8 Obstructions. Curb ramps shall be located or protected to prevent their obstruction by parked vehicles.

- Yes**  No  Non Applicable at this site

Comments:

## ADAAG 4.6 – PARKING AND PASSENGER LOADING ZONES

4.6.1 Minimum Number. Parking spaces required to be accessible shall comply with matrix & 4.6.2 through 4.6.4.

- Yes**  No  Non Applicable at this site

Comments:

4.6.2 Location. Accessible parking spaces on shortest accessible route from parking to an accessible entrance.

- Yes  **No**  Non Applicable at this site

Comments: **FARTHEST DISTANCES PROBABLY OK**

4.6.3 Parking Spaces. Accessible parking spaces >= 96" wide. Parking access aisles part of accessible route to the building or facility entrance. Two accessible parking spaces can share aisle. Parked vehicle overhangs shall not reduce the clear width of an accessible route. Parking spaces and access aisles level with surface slopes not exceeding 1:50 (2%) in all directions.

- Yes**  No  Non Applicable at this site

Comments:

4.6.4 Signage. Accessible parking spaces reserved by a sign showing the symbol of accessibility. Spaces comply with van accessible provisions. Spaces and have an additional "Van-Accessible" sign mounted below the symbol of accessibility. Signs are not obscured by a vehicle parked in spaces. See matrix: # spaces.

- Yes  No  Non Applicable at this site

Comments:

### PARKING SPACE MATRIX

Total Parking in Lot	Required Minimum Number of Accessible
1 to 25	1
26 to 50	2
51 to 75	3
76 to 100	4
101 to 150	5
151 to 200	6
201 to 300	7

# Parking Spots	
Trucks	10
Autos	17
ADA	2

## ADAAG 4.32 – FIXED OR BUILT-IN SEATING AND TABLES

4.32.4 Height of Tables or Counters. The tops of accessible tables and counters shall be from 28" to 34" above the finish floor or ground.

- Yes**  No  Non Applicable at this site

Comments:

## EMERGENCY EGRESS

ADAAG 4.1.3(8) Because entrances also serve as emergency exits whose proximity to all parts of buildings and facilities is essential, it is preferable that all entrances be accessible.

- Yes**  No  Non Applicable at this site

Comments:



## ADAAG 4.9 – STAIRS

**4.9.4 Handrails.** Stairways have handrails at both sides of all stairs and have the these features:

- (1) Handrails are continuous along both sides of stairs including inside handrail on switchback or dogleg stairs
- (2) If handrails are not continuous, they extend  $\geq 12$ " beyond the top riser and  $\geq 12$ " plus the width of one tread beyond bottom riser. At the top, extension is parallel with the floor or ground. At bottom, handrail continues to slope for a length of one tread width from the bottom riser; the remainder of the extension shall be horizontal.
- (3) Clear space between handrails and wall is 1-1/2".
- (4) Gripping surfaces shall be uninterrupted by newel posts, other construction elements, or obstructions.
- (5) Top of handrail gripping surface shall be mounted between 34" and 38" above stair nosings.
- (6) Ends of handrails shall be either rounded or returned smoothly to floor, wall or post.
- (7) Handrails shall not rotate within their fittings.

Yes     No     Non Applicable at this site

Comments:

**Ramps Supplement**    Ramps have 5 level pad at every 30 lineal feet  
Ramps longer than 6 feet have railings on each side  
Ramps rise no more than 30 inches for every 30 feet traveled  
Accessible route always  $\geq 36$ "


## ADAAG 4.15 – DRINKING FOUNTAINS AND WATER COOLERS

**4.15.1 Minimum Number.** Drinking fountains or water coolers required to be accessible shall comply.

YES

**4.15.2 Spout Height.** Spouts shall be no higher than 36" from floor or ground surfaces to the spout

YES

**4.15.3 Spout Location.** The spouts of drinking fountains and water coolers shall be at the front of the unit and shall direct the water flow in a trajectory that is parallel or nearly parallel to the front of the unit. The spout shall provide a flow of water at least 4" high so as to allow the insertion of a cup or glass under the flow of water. On an accessible drinking fountain with a round or oval bowl, the spout must be positioned so the flow of water is within 3" of the front edge of the fountain.

YES

**4.15.4 Controls.** Unit controls shall be front mounted or side mounted near the front edge.

YES

**4.15.5 Clearances.**

(1) Wall- and post-mounted cantilevered units shall have a clear knee space between the bottom of the apron and the floor or ground at least 27" high, 30" wide, and 17" to 19" deep. Such units shall also have a minimum clear floor space 30" by 48" to allow a person in a wheelchair to approach the unit facing forward.

YES

(2) Free-standing or built-in units not having a clear space under them shall have a clear floor space at least 30" by 48" that allows a person in a wheelchair to make a parallel approach to the unit.

YES

**4.1.3(10)(b)** Where more than one drinking fountain or water cooler is provided on a floor, 50 percent of those provided shall comply with 4.15 and shall be on an accessible route.

Yes     No     Non Applicable at this site

Comments:

### Sinks

no more than 34" high?  
at least 29" from bottom of sink to floor?  
30"x48" clear space in front?  
bottom edge of mirror no more than 40"

YES 34"
YES 30"
YES 39"

## ADAAG 4.13 – DOORS

32 inch clear opening at entry

--

**4.13.8 Thresholds at Doorways.** Thresholds at doorways shall not exceed 3/4" in height for exterior sliding doors or 1/2" for other types of doors. Raised thresholds and floor level changes at accessible doorways shall be beveled with a slope no greater than 1:2.

YES

**4.13.9 Door Hardware.** Handles, pulls, latches, locks, and other operating devices on accessible doors shall have a shape that is easy to grasp with one hand and does not require tight grasping, tight pinching, or twisting of the wrist to operate. Lever-operated mechanisms, push-type mechanisms, and U-shaped handles are acceptable designs. When sliding doors are fully open, operating hardware shall be exposed and usable from both sides. Hardware required for accessible door passage shall be mounted no higher than 48" above finished floor.

D-HANDLE

**4.13.10 Door Closers.** If a door has a closer, then the sweep period of the closer shall be adjusted so that from an open position of 70 degrees, the door will take at least 3 seconds to move to a point 3" from the latch, measured to the leading edge of the door.

NO-VERY FLAT

**4.13.11 Door Opening Force.** The maximum force for pushing or pulling open a door shall be as follows:

- (1) Fire doors shall have the minimum opening force allowable by the appropriate administrative authority.
- (2) Other doors.

- (a) exterior hinged doors: (Reserved)
- (b) interior hinged doors: 5 lbf (22.2N)
- (c) sliding or folding doors: 5 lbf (22.2N)

NO-HEAVY

These forces do not apply to the force required to retract latch bolts or disengage other devices that may hold the door in a closed position.

**4.13.12 Automatic Doors and Power-Assisted Doors.** If an automatic door is used, then it shall comply with ANSI/BHMA A156.10-1985. Slowly opening, low-powered, automatic doors shall comply with ANSI A156.19-1984. Such doors shall not open to back check faster than 3 seconds and shall require no more than 15 lbf (66.6N) to stop door movement. If a power-assisted door is used, its door-opening force shall comply with 4.13.11 and it's closing shall conform to the requirements in ANSI A156.19-1984.

Yes     No     Non Applicable at this site

Comments:

## ADAAG 4.14 – ENTRANCES

**4.14.1 Minimum Number.** Entrances required to be accessible shall be part of an accessible route. Such entrances shall be connected by an accessible route to public transportation stops, to accessible parking and passenger loading zones, and to public streets or sidewalks if available. They shall also be connected by an accessible route to all accessible spaces or elements within the building or facility.

YES

**4.1.3(8)(a)** At least 50 percent of all public entrances must be accessible. At least one must be a ground floor entrance. Public entrances are any entrances that are not loading or service entrances. In facilities subject to Title II of the ADA, all planned principal public entrances shall be included within the 50 percent of public entrances required to be accessible. This provision does not require the number of principal public entrances to exceed 50 percent of all public entrances planned for a facility.

YES

**4.14.2 Service Entrances.** A service entrance shall not be the sole accessible entrance unless it is the only entrance to a building or facility (for example, in a factory or garage).

YES

**4.1.3(7)(d)** Entrances which are not accessible shall have directional signage complying the ADAAG which indicate the location of the nearest accessible entrance.

Yes

Comments:

No

Non Applicable at this site

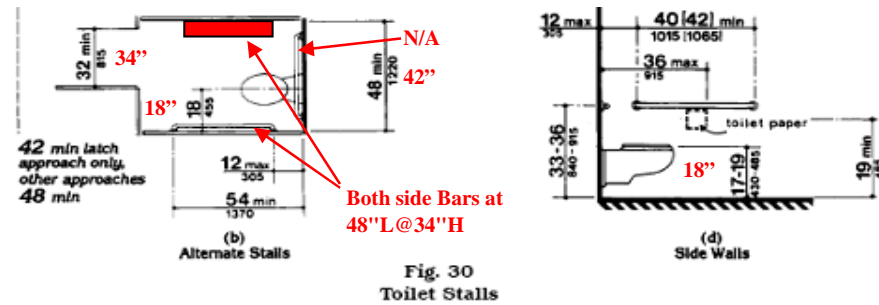


**ADAAG 4.16 – WATER CLOSETS through ADAAG 4.26 HANDRAILS**

These sections of the ADAAG deal specifically with accessible features of restrooms, water closets, and bathing facilities.

4.1.3(11) Toilet Facilities. If toilet rooms are provided, then each public and common use toilet room shall comply with 4.22. Other toilet rooms provided for the use of occupants of specific spaces (i.e., a private toilet room for the occupant a private office) shall be adaptable. If bathing rooms are provided, then each public and common use bathroom shall comply with 4.23. Accessible toilet rooms and bathing facilities shall be on an accessible route.

- Yes
- No**
- Non Applicable here
- Comments



**\*STALL NOT WIDE ENOUGH**

Doorway is 32" clear?  
 Grab bars behind and on side of stall?  
 5'x5' or 3'x5.5' or 4'x5.5' clear space in front of h/c stall?

**YES**  
 **NO BOTH SIDES**  
 **YES**

**ADAAG 4.27 – CONTROLS AND OPERATING MECHANISMS**

4.27.2 Clear Floor Space. Clear floor space that allows a forward or a parallel approach by a person using a wheelchair shall be provided at controls, dispensers, receptacles, and other operable equipment

- Yes**
  - No
  - Non Applicable at this site
- Comments:

**ADAAG 4.31 – TELEPHONES** NONE

4.31.1 General. Public telephones required to be accessible shall comply with 4.31.

4.31.2 Clear Floor or Ground Space. A clear floor or ground space at least 30" by 48" that allows either a forward or parallel approach by a person using a wheelchair shall be provided at telephones. The clear floor or ground space shall comply. Bases, enclosures, and fixed seats shall not impede approaches to telephones by people who use wheelchairs.

4.31.3 Mounting Height. The highest operable part of the telephone shall be 48" for a forward wheelchair approach and 54" for a parallel wheelchair approach.

4.31.6 Controls. Telephones shall have pushbutton controls where service for such equipment is available.

4.31.9 Text Telephones (TTYs) Required by 4.1.

3) Equivalent facilitation may be provided. For example, a portable text telephone (TTY) may be made available in a hotel at the registration desk if it is available on a 24-hour basis for use with nearby public pay telephones. In this instance, at least one pay telephone shall comply with paragraph 2 of this section. In addition, if an acoustic coupler is used, the telephone handset cord shall be sufficiently long so as to allow connection of the text telephone (TTY) and the telephone receiver. Directional signage shall be provided and shall comply.

- Yes
  - No
  - Non Applicable at this site**
- Comments:

**ADAAG 4.30 – SIGNAGE** NONE

4.30.1 General. Signage required to be accessible shall comply with the applicable provisions of 4.30.

4.30.2 Character Proportion. Letters and numbers on signs shall have a width-to-height ratio between 3:5 and 1:1 and a stroke-width-to-height ratio between 1:5 and 1:10.

4.30.3 Character Height. Characters and numbers on signs shall be sized according to the viewing distance from which they are to be read. The minimum height is measured using an upper case X. Lower case characters are permitted.

4.30.4 Raised and Braille Characters and Pictorial Symbol Signs (Pictograms). Letters and numerals shall be raised 1/32" minimum, upper case, sans serif or simple serif type and shall be accompanied with Grade 2 Braille. Raised characters shall be at least 5/8" high, but no higher than 2". Pictograms shall be accompanied by the equivalent verbal description placed directly below the pictogram. The border dimension of the pictogram shall be 6" minimum in height.

4.30.5 Finish and Contrast. The characters and background of signs shall be eggshell, matte, or other non-glare finish. Characters and symbols shall contrast with their background -- either light characters on a dark background or dark characters on a light background.

4.30.6 Mounting Location and Height. Where permanent identification is provided for rooms and spaces, signs shall be installed on the wall adjacent to the **latch side of the door**. Where there is no wall space to the latch side of the door, including at double leaf doors, signs shall be placed on the nearest adjacent wall. Mounting height shall be **60"** above the finish floor to the centerline of the sign. Mounting location for such signage shall be so that a person may approach within 3" of signage without encountering protruding objects or standing within the swing of a door.

4.30.7 Symbols of Accessibility.

- (1) Facilities and elements required to be identified as accessible shall use the international symbol of accessibility. The symbol shall be displayed.
- (2) Volume Control Telephones. Telephones required to have a volume control shall be identified by a sign containing a depiction of a telephone handset with radiating sound waves.
- (3) Text Telephones (TTYs). Text telephones (TTYs) required shall be identified by the international TTY symbol. In addition, if a facility has a public text telephone (TTY), directional signage indicating the location of the nearest text telephone (TTY) shall be placed adjacent to all banks of telephones, which do not contain a text telephone (TTY). Such directional signage shall include the international TTY symbol. If a facility has no banks of telephones, the directional signage shall be provided at the entrance (e.g., in a building directory).

- Yes-ON PARKING SIGN**
- No-ON ENTRY DOORS**
- Non Applicable at this site

Comments:



(a) Proportions International Symbol of Accessibility

# CHECKLIST FOR FACILITY ACCESSIBILITY

District \_\_\_\_\_ Building Name **Hysham EB RA**  
 Address **I-94 EB 64.7** Date of Inventory: **4/24/2008**

## Instructions for completing checklist:

- 1) YES, if element exists and complies.
- 2) NO, if element exists and does not comply. Comment on what does not comply and the reason why.
- 3) NON APPLICABLE, if element does not exist

## ADAAG 4.3.11.1 – AREAS OF RESCUE ASSISTANCE

**4.3.11.1 Location and construction.** An area of rescue assistance shall be a portion of a stairway landing

**4.3.11.2 Size.** Each area of rescue assistance shall provide at least two accessible areas each being not less than 30" by 48".

**4.3.11.3 Stairway Width.** Stairway adjacent to area of rescue assist. - min. clear width of 48" b/tw handrails

**4.3.11.4 Two-way Communication.** Method of two-way communication, visible and audible signals, between each area of rescue assistance and the primary entry.

**4.3.11.5 Identification.** "AREA OF RESCUE ASSISTANCE" sign displays the international symbol of accessibility. Signage installed at all inaccessible exits, with directions to rescue assistance

- Yes  No  **Non Applicable at this site**

Comments:

## ADAAG 4.4 – PROTRUDING OBJECTS

**4.4.1 General.** Objects projecting <= 4" from walls (for example, telephones) if leading edges between 27" and 80" above the finished floor for walks, halls, corridors, passageways, or aisles. **YES**

Objects mounted with their leading edges at or below 27" above the finished floor may protrude any amount. Free-standing objects mounted on posts or pylons overhang 12" maximum from 27" to 80" above ground/floor. Protruding objects shall not reduce the clear width of an accessible route or maneuvering space.

- Yes**  No  Non Applicable at this site

Comments:

## ADAAG 4.7 – CURB RAMPS

**4.7.1 Location.** Curb ramps shall be provided wherever an accessible route crosses a curb. **YES**

**4.7.2 Slope.** Slopes measured as shown in figures: Max curb ramp slope <= 1:12 or 8.33%. Flush and clear transitions from ramps to walks, gutters, or streets with no abrupt changes. **YES**

**4.7.3 Width.** The minimum width of a curb ramp shall be 36", exclusive of the flared sides. **YES**

**4.7.4 Surface.** Surfaces of curb ramps shall be firm, stable and slip resistant **YES**

**4.7.5 Sides of Curb Ramps.** Curb ramps located where pedestrians walk across ramp, or where not protected by handrails or guardrails, must have flared sides; the maximum slope of the flare shall be 1:10. Curb ramps with returned curbs may be used where pedestrians would not normally walk across the ramp. **YES**

**4.7.6 Built-up Curb Ramps.** Built-up curb ramps located so they do not project into vehicular traffic lanes. **YES**

**4.7.8 Obstructions.** Curb ramps shall be located or protected to prevent their obstruction by parked vehicles.

- Yes**  No  Non Applicable at this site

Comments:

## ADAAG 4.6 – PARKING AND PASSENGER LOADING ZONES

**4.6.1 Minimum Number.** Parking spaces required to be accessible shall comply with matrix & 4.6.2 through 4.6.4.

- Yes**  No  Non Applicable at this site

Comments:

**4.6.2 Location.** Accessible parking spaces on shortest accessible route from parking to an accessible entrance.

- Yes**  No  Non Applicable at this site

Comments:

**4.6.3 Parking Spaces.** Accessible parking spaces >= 96" wide. Parking access aisles part of accessible route to the building or facility entrance. Two accessible parking spaces can share aisle. Parked vehicle overhangs shall not reduce the clear width of an accessible route. Parking spaces and access aisles level with surface slopes not exceeding 1:50 (2%) in all directions.

- Yes**  No  Non Applicable at this site

Comments:

**4.6.4 Signage.** Accessible parking spaces reserved by a sign showing the symbol of accessibility. Spaces comply with van accessible provisions. Spaces and have an additional "Van-Accessible" sign mounted below the symbol of accessibility. Signs are not obscured by a vehicle parked in spaces. See matrix: # spaces.

- Yes  **No**  Non Applicable at this site

Comments:

### PARKING SPACE MATRIX

Total Parking in Lot	Required Minimum Number of Accessible
1 to 25	1
26 to 50	2
51 to 75	3
76 to 100	4
101 to 150	5
151 to 200	6
201 to 300	7

# Parking Spots	
Trucks	5
Autos	15
ADA	2

## ADAAG 4.32 – FIXED OR BUILT-IN SEATING AND TABLES

**4.32.4 Height of Tables or Counters.** The tops of accessible tables and counters shall be from 28" to 34" above the finish floor or ground.

- Yes**  No  Non Applicable at this site

Comments:

## EMERGENCY EGRESS

**ADAAG 4.1.3(8)** Because entrances also serve as emergency exits whose proximity to all parts of buildings and facilities is essential, it is preferable that all entrances be accessible.

- Yes**  No  Non Applicable at this site

Comments:

**ADAAG 4.9 – STAIRS**

- 4.9.4 Handrails.** Stairways have handrails at both sides of all stairs and have the these features:
- (1) Handrails are continuous along both sides of stairs including inside handrail on switchback or dogleg stairs
  - (2) If handrails are not continuous, they extend >= 12" beyond the top riser and >= 12" plus the width of one tread beyond bottom riser. At the top, extension is parallel with the floor or ground. At bottom, handrail continues to slope for a length of one tread width from the bottom riser; the remainder of the extension shall be horizontal.
  - (3) Clear space between handrails and wall is 1-1/2".
  - (4) Gripping surfaces shall be uninterrupted by newel posts, other construction elements, or obstructions.
  - (5) Top of handrail gripping surface shall be mounted between 34" and 38" above stair nosings.
  - (6) Ends of handrails shall be either rounded or returned smoothly to floor, wall or post.
  - (7) Handrails shall not rotate within their fittings.

Yes       No       **Non Applicable at this site**

Comments:

<b>Ramps Suppment</b>	Ramps have 5 level pad at every 30 lineal feet	
	Ramps longer than 6 feet have railings on each side	
	Ramps rise no more than 30 inches for every 30 feet traveled	YES
	Accessible route always >= 36"	

**ADAAG 4.15 – DRINKING FOUNTAINS AND WATER COOLERS**

- 4.15.1 Minimum Number.** Drinking fountains or water coolers required to be accessible shall comply. **YES**
- 4.15.2 Spout Height.** Spouts shall be no higher than **36"** from floor or ground surfaces to the spout **RIGHT AT 36" YES**
- 4.15.3 Spout Location.** The spouts of drinking fountains and water coolers shall be at the front of the unit and shall direct the water flow in a trajectory that is parallel or nearly parallel to the front of the unit. The spout shall provide a flow of water at least 4" high so as to allow the insertion of a cup or glass under the flow of water. On an accessible drinking fountain with a round or oval bowl, the spout must be positioned so the flow of water is within 3" of the front edge of the fountain. **YES**
- 4.15.4 Controls.** Unit **controls** shall be front mounted or side mounted near the front edge. **YES**
- 4.15.5 Clearances.**
- (1) Wall- and post-mounted cantilevered units shall have a clear knee space between the bottom of the apron and the floor or ground at least 27" high, 30" wide, and 17" to 19" deep. Such units shall also have a minimum clear floor space **30" by 48"** to allow a person in a wheelchair to approach the unit facing forward. **YES**
  - (2) Free-standing or built-in units not having a clear space under them shall have a clear floor space at least 30" by 48" that allows a person in a wheelchair to make a parallel approach to the unit. **YES**
- 4.1.3(10)(b)** Where more than one drinking fountain or water cooler is provided on a floor, 50 percent of those provided shall comply with 4.15 and shall be on an accessible route.

**Yes**       No       Non Applicable at this site

Comments:

<b>Sinks</b>	no more than 34" high?	YES 34"
	at least 29" from bottom of sink to floor?	YES 30"
	30"x48" clear space in front?	
	bottom edge of mirror no more than 40"	NO 42"

**ADAAG 4.13 – DOORS**      **32 inch clear opening at entry**     

- 4.13.8 Thresholds at Doorways.** Thresholds at doorways shall not exceed 3/4" in height for exterior sliding doors or 1/2" for other types of doors. Raised thresholds and floor level changes at accessible doorways shall be beveled with a slope no greater than 1:2. **YES**
- 4.13.9 Door Hardware.** Handles, pulls, latches, locks, and other operating devices on accessible doors shall have a shape that is easy to grasp with one hand and does not require tight grasping, tight pinching, or twisting of the wrist to operate. Lever-operated mechanisms, push-type mechanisms, and U-shaped handles are acceptable designs. When sliding doors are fully open, operating hardware shall be exposed and usable from both sides. Hardware required for accessible door passage shall be mounted no higher than **48"** above finished floor. **?**
- 4.13.10 Door Closers.** If a door has a closer, then the sweep period of the closer shall be adjusted so that from an open position of 70 degrees, the door will take at least **3 seconds** to move to a point 3" from the latch, measured to the leading edge of the door. **YES**
- 4.13.11 Door Opening Force.** The maximum force for pushing or pulling open a door shall be as follows:
- (1) Fire doors shall have the minimum opening force allowable by the appropriate administrative authority.
  - (2) Other doors.
    - (a) exterior hinged doors: (Reserved)
    - (b) interior hinged doors: **5 lbf** (22.2N) **YES**
    - (c) sliding or folding doors: 5 lbf (22.2N)
- These forces do not apply to the force required to retract latch bolts or disengage other devices that may hold the door in a closed position.

- 4.13.12 Automatic Doors and Power-Assisted Doors.** If an automatic door is used, then it shall comply with ANSI/BHMA A156.10-1985. Slowly opening, low-powered, automatic doors shall comply with ANSI A156.19-1984. Such doors shall not open to back check faster than 3 seconds and shall require no more than 15 lbf (66.6N) to stop door movement. If a power-assisted door is used, its door-opening force shall comply with 4.13.11 and it's closing shall conform to the requirements in ANSI A156.19-1984.
- Yes       No       **Non Applicable at this site**

Comments:

**ADAAG 4.14 – ENTRANCES**

- 4.14.1 Minimum Number.** Entrances required to be accessible shall be part of an accessible route. Such entrances shall be connected by an accessible route to public transportation stops, to accessible parking and passenger loading zones, and to public streets or sidewalks if available. They shall also be connected by an accessible route to all accessible spaces or elements within the building or facility. **YES**
- 4.1.3(8)(a)** At least 50 percent of all public entrances must be accessible. At least one must be a ground floor entrance. Public entrances are any entrances that are not loading or service entrances. In facilities subject to Title II of the ADA, all planned principal public entrances shall be included within the 50 percent of public entrances required to be accessible. This provision does not require the number of principal public entrances to exceed 50 percent of all public entrances planned for a facility. **YES**
- 4.14.2 Service Entrances.** A service entrance shall not be the sole accessible entrance unless it is the only entrance to a building or facility (for example, in a factory or garage). **YES**
- 4.1.3(7)(d)** Entrances which are not accessible shall have directional signage complying the ADAAG which indicate the location of the nearest accessible entrance.
- Yes**       No       Non Applicable at this site
- Comments:



**ADAAG 4.16 – WATER CLOSETS through ADAAG 4.26 HANDRAILS**

These sections of the ADAAG deal specifically with accessible features of restrooms, water closets, and bathing facilities.

4.1.3(11) Toilet Facilities. If toilet rooms are provided, then each public and common use toilet room shall comply with 4.22. Other toilet rooms provided for the use of occupants of specific spaces (i.e., a private toilet room for the occupant a private office) shall be adaptable. If bathing rooms are provided, then each public and common use bathroom shall comply with 4.23. Accessible toilet rooms and bathing facilities shall be on an accessible route.

- Yes
- No
- Non Applicable here
- Comments

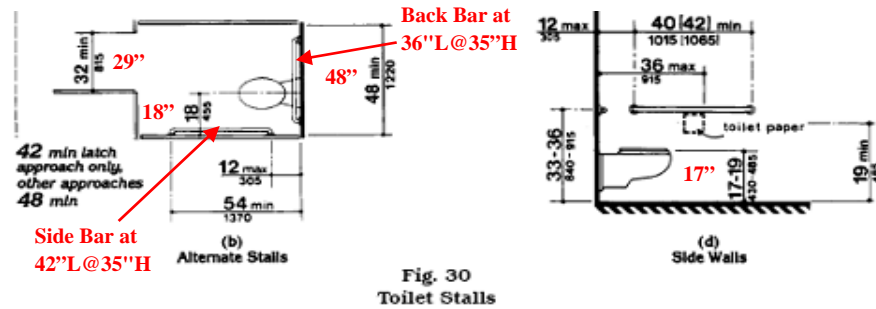


Fig. 30 Toilet Stalls

Doorway is 32" clear?  
 Grab bars behind and on side of stall?  
 5'x5' or 3'x5.5' or 4'x5.5' clear space in front of h/c stall?

NO 29"
YES
YES

**ADAAG 4.27 – CONTROLS AND OPERATING MECHANISMS**

4.27.2 Clear Floor Space. Clear floor space that allows a forward or a parallel approach by a person using a wheelchair shall be provided at controls, dispensers, receptacles, and other operable equipment

- Yes
  - No
  - Non Applicable at this site
- Comments:

**ADAAG 4.31 – TELEPHONES**

NONE

4.31.1 General. Public telephones required to be accessible shall comply with 4.31.

4.31.2 Clear Floor or Ground Space. A clear floor or ground space at least 30" by 48" that allows either a forward or parallel approach by a person using a wheelchair shall be provided at telephones. The clear floor or ground space shall comply. Bases, enclosures, and fixed seats shall not impede approaches to telephones by people who use wheelchairs.

4.31.3 Mounting Height. The highest operable part of the telephone shall be 48" for a forward wheelchair approach and 54" for a parallel wheelchair approach.

4.31.6 Controls. Telephones shall have pushbutton controls where service for such equipment is available.

4.31.9 Text Telephones (TTYs) Required by 4.1.

3) Equivalent facilitation may be provided. For example, a portable text telephone (TTY) may be made available in a hotel at the registration desk if it is available on a 24-hour basis for use with nearby public pay telephones. In this instance, at least one pay telephone shall comply with paragraph 2 of this section. In addition, if an acoustic coupler is used, the telephone handset cord shall be sufficiently long so as to allow connection of the text telephone (TTY) and the telephone receiver. Directional signage shall be provided and shall comply.

- Yes
- No
- Non Applicable at this site

Comments:

**ADAAG 4.30 – SIGNAGE**

4.30.1 General. Signage required to be accessible shall comply with the applicable provisions of 4.30.

NO

4.30.2 Character Proportion. Letters and numbers on signs shall have a width-to-height ratio between 3:5 and 1:1 and a stroke-width-to-height ratio between 1:5 and 1:10.

NO

4.30.3 Character Height. Characters and numbers on signs shall be sized according to the viewing distance from which they are to be read. The minimum height is measured using an upper case X. Lower case characters are permitted.

NO

4.30.4 Raised and Braille Characters and Pictorial Symbol Signs (Pictograms). Letters and numerals shall be raised 1/32" minimum, upper case, sans serif or simple serif type and shall be accompanied with Grade 2 Braille. Raised characters shall be at least 5/8" high, but no higher than 2". Pictograms shall be accompanied by the equivalent verbal description placed directly below the pictogram. The border dimension of the pictogram shall be 6" minimum in height.

NO

4.30.5 Finish and Contrast. The characters and background of signs shall be eggshell, matte, or other non-glare finish. Characters and symbols shall contrast with their background -- either light characters on a dark background or dark characters on a light background.

NO

4.30.6 Mounting Location and Height. Where permanent identification is provided for rooms and spaces, signs shall be installed on the wall adjacent to the latch side of the door. Where there is no wall space to the latch side of the door, including at double leaf doors, signs shall be placed on the nearest adjacent wall. Mounting height shall be 60" above the finish floor to the centerline of the sign. Mounting location for such signage shall be so that a person may approach within 3" of signage without encountering protruding objects or standing within the swing of a door.

NO

4.30.7 Symbols of Accessibility.

- (1) Facilities and elements required to be identified as accessible shall use the international symbol of accessibility. The symbol shall be displayed.
- (2) Volume Control Telephones. Telephones required to have a volume control shall be identified by a sign containing a depiction of a telephone handset with radiating sound waves.
- (3) Text Telephones (TTYs). Text telephones (TTYs) required shall be identified by the international TTY symbol. In addition, if a facility has a public text telephone (TTY), directional signage indicating the location of the nearest text telephone (TTY) shall be placed adjacent to all banks of telephones, which do not contain a text telephone (TTY). Such directional signage shall include the international TTY symbol. If a facility has no banks of telephones, the directional signage shall be provided at the entrance (e.g., in a building directory).

Yes-ON PARKING SIGN

- No
- Non Applicable at this site

Comments:VERY SMALL SIGN ON DOORS



(a) Proportions International Symbol of Accessibility

# CHECKLIST FOR FACILITY ACCESSIBILITY

District \_\_\_\_\_ Building Name **Hysham WB RA**  
 Address **I-94 WB 64.8** Date of Inventory: **4/24/2008**

## Instructions for completing checklist:

- 1) YES, if element exists and complies.
- 2) NO, if element exists and does not comply. Comment on what does not comply and the reason why.
- 3) NON APPLICABLE, if element does not exist

## ADAAG 4.3.11.1 – AREAS OF RESCUE ASSISTANCE **NONE**

**4.3.11.1 Location and construction.** An area of rescue assistance shall be a portion of a stairway landing

**4.3.11.2 Size.** Each area of rescue assistance shall provide at least two accessible areas each being not less than 30" by 48".

**4.3.11.3 Stairway Width.** Stairway adjacent to area of rescue assist. - min. clear width of 48" b/tw handrails

**4.3.11.4 Two-way Communication.** Method of two-way communication, visible and audible signals, between each area of rescue assistance and the primary entry.

**4.3.11.5 Identification.** "AREA OF RESCUE ASSISTANCE" sign displays the international symbol of accessibility. Signage installed at all inaccessible exits, with directions to rescue assistance

Yes  No  **Non Applicable at this site**

Comments:

## ADAAG 4.4 – PROTRUDING OBJECTS

**4.4.1 General.** Objects projecting <= 4" from walls (for example, telephones) if leading edges between 27" and 80" above the finished floor for walks, halls, corridors, passageways, or aisles. **YES**

Objects mounted with their leading edges at or below 27" above the finished floor may protrude any amount. Free-standing objects mounted on posts or pylons overhang 12" maximum from 27" to 80" above ground/floor. Protruding objects shall not reduce the clear width of an accessible route or maneuvering space.

**Yes**  No  Non Applicable at this site

Comments:

## ADAAG 4.7 – CURB RAMPS

**4.7.1 Location.** Curb ramps shall be provided wherever an accessible route crosses a curb. **YES**

**4.7.2 Slope.** Slopes measured as shown in figures: Max curb ramp slope <= 1:12 or 8.33%. Flush and clear transitions from ramps to walks, gutters, or streets with no abrupt changes. **YES**

**4.7.3 Width.** The minimum width of a curb ramp shall be 36", exclusive of the flared sides. **YES**

**4.7.4 Surface.** Surfaces of curb ramps shall be firm, stable and slip resistant **YES**

**4.7.5 Sides of Curb Ramps.** Curb ramps located where pedestrians walk across ramp, or where not protected by handrails or guardrails, must have flared sides; the maximum slope of the flare shall be 1:10. Curb ramps with returned curbs may be used where pedestrians would not normally walk across the ramp. **YES**

**4.7.6 Built-up Curb Ramps.** Built-up curb ramps located so they do not project into vehicular traffic lanes. **YES**

**4.7.8 Obstructions.** Curb ramps shall be located or protected to prevent their obstruction by parked vehicles.

**Yes**  No  Non Applicable at this site

Comments:

## ADAAG 4.6 – PARKING AND PASSENGER LOADING ZONES

**4.6.1 Minimum Number.** Parking spaces required to be accessible shall comply with matrix & 4.6.2 through 4.6.4.

**Yes**  No  Non Applicable at this site

Comments:

**4.6.2 Location.** Accessible parking spaces on shortest accessible route from parking to an accessible entrance.

**Yes**  No  Non Applicable at this site

Comments:

**4.6.3 Parking Spaces.** Accessible parking spaces >= 96" wide. Parking access aisles part of accessible route to the building or facility entrance. Two accessible parking spaces can share aisle. Parked vehicle overhangs shall not reduce the clear width of an accessible route. Parking spaces and access aisles level with surface slopes not exceeding 1:50 (2%) in all directions.

**Yes**  No  Non Applicable at this site

Comments:

**4.6.4 Signage.** Accessible parking spaces reserved by a sign showing the symbol of accessibility. Spaces comply with van accessible provisions. Spaces and have an additional "Van-Accessible" sign mounted below the symbol of accessibility. Signs are not obscured by a vehicle parked in spaces. See matrix: # spaces.

Yes  **No**  Non Applicable at this site

Comments: **\*PAINTED ON GROUND, NO SIGNS?**

### PARKING SPACE MATRIX

Total Parking in Lot	Required Minimum Number of Accessible
1 to 25	1
26 to 50	2
51 to 75	3
76 to 100	4
101 to 150	5
151 to 200	6
201 to 300	7

# Parking Spots	
Trucks	4
Autos	15
ADA	2

## ADAAG 4.32 – FIXED OR BUILT-IN SEATING AND TABLES

**4.32.4 Height of Tables or Counters.** The tops of accessible tables and counters shall be from 28" to 34" above the finish floor or ground.

**Yes**  No  Non Applicable at this site

Comments:

## EMERGENCY EGRESS

**ADAAG 4.1.3(8)** Because entrances also serve as emergency exits whose proximity to all parts of buildings and facilities is essential, it is preferable that all entrances be accessible.

**Yes**  No  Non Applicable at this site

Comments:



**ADAAG 4.9 – STAIRS**

NONE

**4.9.4 Handrails.** Stairways have handrails at both sides of all stairs and have the these features:

- (1) Handrails are continuous along both sides of stairs including inside handrail on switchback or dogleg stairs
- (2) If handrails are not continuous, they extend >= 12" beyond the top riser and >= 12" plus the width of one tread beyond bottom riser. At the top, extension is parallel with the floor or ground. At bottom, handrail continues to slope for a length of one tread width from the bottom riser; the remainder of the extension shall be horizontal.
- (3) Clear space between handrails and wall is 1-1/2".
- (4) Gripping surfaces shall be uninterrupted by newel posts, other construction elements, or obstructions.
- (5) Top of handrail gripping surface shall be mounted between 34" and 38" above stair nosings.
- (6) Ends of handrails shall be either rounded or returned smoothly to floor, wall or post.
- (7) Handrails shall not rotate within their fittings.

Yes       No       **Non Applicable at this site**

Comments:

**Ramps Suppment**

Ramps have 5 level pad at every 30 lineal feet  
 Ramps longer than 6 feet have railings on each side  
 Ramps rise no more than 30 inches for every 30 feet traveled  
 Accessible route always >= 36"

YES

**ADAAG 4.15 – DRINKING FOUNTAINS AND WATER COOLERS**

**4.15.1 Minimum Number.** Drinking fountains or water coolers required to be accessible shall comply.

YES

**4.15.2 Spout Height.** Spouts shall be no higher than **36"** from floor or ground surfaces to the spout

YES

**4.15.3 Spout Location.** The spouts of drinking fountains and water coolers shall be at the front of the unit and shall direct the water flow in a trajectory that is parallel or nearly parallel to the front of the unit. The spout shall provide a flow of water at least 4" high so as to allow the insertion of a cup or glass under the flow of water. On an accessible drinking fountain with a round or oval bowl, the spout must be positioned so the flow of water is within 3" of the front edge of the fountain. YES

**4.15.4 Controls.** Unit **controls** shall be front mounted or side mounted near the front edge.

YES

**4.15.5 Clearances.**

(1) Wall- and post-mounted cantilevered units shall have a clear knee space between the bottom of the apron and the floor or ground at least 27" high, 30" wide, and 17" to 19" deep. Such units shall also have a minimum clear floor space **30" by 48"** to allow a person in a wheelchair to approach the unit facing forward.

YES

(2) Free-standing or built-in units not having a clear space under them shall have a clear floor space at least 30" by 48" that allows a person in a wheelchair to make a parallel approach to the unit.

YES

**4.1.3(10)(b)** Where more than one drinking fountain or water cooler is provided on a floor, 50 percent of those provided shall comply with 4.15 and shall be on an accessible route.

**Yes**       No       Non Applicable at this site

Comments:

**Sinks**

no more than 34" high?  
 at least 29" from bottom of sink to floor?  
 30"x48" clear space in front?  
 bottom edge of mirror no more than 40"

YES 33.5"
YES 29.5"
NO 42"

**ADAAG 4.13 – DOORS**

**32 inch clear opening at entry**

**4.13.8 Thresholds at Doorways.** Thresholds at doorways shall not exceed 3/4" in height for exterior sliding doors or 1/2" for other types of doors. Raised thresholds and floor level changes at accessible doorways shall be beveled with a slope no greater than 1:2. YES

**4.13.9 Door Hardware.** Handles, pulls, latches, locks, and other operating devices on accessible doors shall have a shape that is easy to grasp with one hand and does not require tight grasping, tight pinching, or twisting of the wrist to operate. Lever-operated mechanisms, push-type mechanisms, and U-shaped handles are acceptable designs. When sliding doors are fully open, operating hardware shall be exposed and usable from both sides. Hardware required for accessible door passage shall be mounted no higher than **48"** above finished floor. YES

**4.13.10 Door Closers.** If a door has a closer, then the sweep period of the closer shall be adjusted so that from an open position of 70 degrees, the door will take at least **3 seconds** to move to a point 3" from the latch, measured to the leading edge of the door. YES

**4.13.11 Door Opening Force.** The maximum force for pushing or pulling open a door shall be as follows:

- (1) Fire doors shall have the minimum opening force allowable by the appropriate administrative authority.
- (2) Other doors.
  - (a) exterior hinged doors: (Reserved)
  - (b) interior hinged doors: **5 lbf** (22.2N) YES
  - (c) sliding or folding doors: 5 lbf (22.2N)

These forces do not apply to the force required to retract latch bolts or disengage other devices that may hold the door in a closed position. YES

**4.13.12 Automatic Doors and Power-Assisted Doors.** If an automatic door is used, then it shall comply with ANSI/BHMA A156.10-1985. Slowly opening, low-powered, automatic doors shall comply with ANSI A156.19-1984. Such doors shall not open to back check faster than 3 seconds and shall require no more than 15 lbf (66.6N) to stop door movement. If a power-assisted door is used, its door-opening force shall comply with 4.13.11 and it's closing shall conform to the requirements in ANSI A156.19-1984.

Yes       No       **Non Applicable at this site**

Comments:

**ADAAG 4.14 – ENTRANCES**

**4.14.1 Minimum Number.** Entrances required to be accessible shall be part of an accessible route. Such entrances shall be connected by an accessible route to public transportation stops, to accessible parking and passenger loading zones, and to public streets or sidewalks if available. They shall also be connected by an accessible route to all accessible spaces or elements within the building or facility. YES

**4.1.3(8)(a)** At least 50 percent of all public entrances must be accessible. At least one must be a ground floor entrance. Public entrances are any entrances that are not loading or service entrances. In facilities subject to Title II of the ADA, all planned principal public entrances shall be included within the 50 percent of public entrances required to be accessible. This provision does not require the number of principal public entrances to exceed 50 percent of all public entrances planned for a facility. YES

**4.14.2 Service Entrances.** A service entrance shall not be the sole accessible entrance unless it is the only entrance to a building or facility (for example, in a factory or garage). YES

**4.1.3(7)(d)** Entrances which are not accessible shall have directional signage complying the ADAAG which indicate the location of the nearest accessible entrance.

**Yes**

Comments:       No       Non Applicable at this site

**ADAAG 4.16 – WATER CLOSETS through ADAAG 4.26 HANDRAILS**

These sections of the ADAAG deal specifically with accessible features of restrooms, water closets, and bathing facilities.

4.1.3(11) Toilet Facilities. If toilet rooms are provided, then each public and common use toilet room shall comply with 4.22. Other toilet rooms provided for the use of occupants of specific spaces (i.e., a private toilet room for the occupant a private office) shall be adaptable. If bathing rooms are provided, then each public and common use bathroom shall comply with 4.23. Accessible toilet rooms and bathing facilities shall be on an accessible route.

- Yes
- No**
- Non Applicable here
- Comments

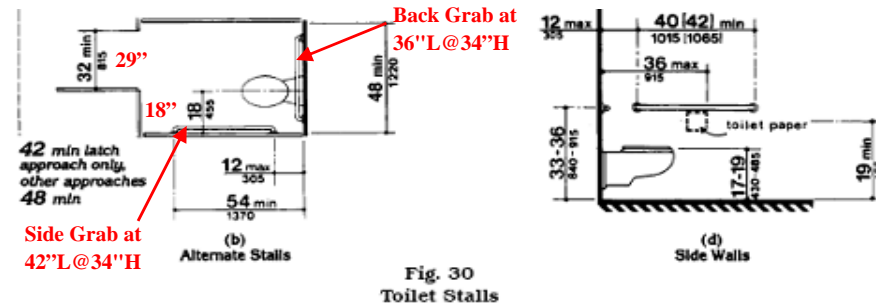


Fig. 30 Toilet Stalls

Doorway is 32" clear?  
 Grab bars behind and on side of stall?  
 5'x5' or 3'x5.5' or 4'x5.5' clear space in front of h/c stall?

NO
YES
YES

**ADAAG 4.27 – CONTROLS AND OPERATING MECHANISMS**

4.27.2 Clear Floor Space. Clear floor space that allows a forward or a parallel approach by a person using a wheelchair shall be provided at controls, dispensers, receptacles, and other operable equipment

- Yes**
  - No
  - Non Applicable at this site
- Comments:

**ADAAG 4.31 – TELEPHONES**

**NONE**

4.31.1 General. Public telephones required to be accessible shall comply with 4.31.

4.31.2 Clear Floor or Ground Space. A clear floor or ground space at least 30" by 48" that allows either a forward or parallel approach by a person using a wheelchair shall be provided at telephones. The clear floor or ground space shall comply. Bases, enclosures, and fixed seats shall not impede approaches to telephones by people who use wheelchairs.

4.31.3 Mounting Height. The highest operable part of the telephone shall be 48" for a forward wheelchair approach and 54" for a parallel wheelchair approach.

4.31.6 Controls. Telephones shall have pushbutton controls where service for such equipment is available.

4.31.9 Text Telephones (TTYs) Required by 4.1.

3) Equivalent facilitation may be provided. For example, a portable text telephone (TTY) may be made available in a hotel at the registration desk if it is available on a 24-hour basis for use with nearby public pay telephones. In this instance, at least one pay telephone shall comply with paragraph 2 of this section. In addition, if an acoustic coupler is used, the telephone handset cord shall be sufficiently long so as to allow connection of the text telephone (TTY) and the telephone receiver. Directional signage shall be provided and shall comply.

- Yes
- No
- Non Applicable at this site**

Comments:

**ADAAG 4.30 – SIGNAGE**

**NONE**

4.30.1 General. Signage required to be accessible shall comply with the applicable provisions of 4.30.

4.30.2 Character Proportion. Letters and numbers on signs shall have a width-to-height ratio between 3:5 and 1:1 and a stroke-width-to-height ratio between 1:5 and 1:10.

4.30.3 Character Height. Characters and numbers on signs shall be sized according to the viewing distance from which they are to be read. The minimum height is measured using an upper case X. Lower case characters are permitted.

4.30.4 Raised and Braille Characters and Pictorial Symbol Signs (Pictograms). Letters and numerals shall be raised 1/32" minimum, upper case, sans serif or simple serif type and shall be accompanied with Grade 2 Braille. Raised characters shall be at least 5/8" high, but no higher than 2". Pictograms shall be accompanied by the equivalent verbal description placed directly below the pictogram. The border dimension of the pictogram shall be 6" minimum in height.

4.30.5 Finish and Contrast. The characters and background of signs shall be eggshell, matte, or other non-glare finish. Characters and symbols shall contrast with their background -- either light characters on a dark background or dark characters on a light background.

4.30.6 Mounting Location and Height. Where permanent identification is provided for rooms and spaces, signs shall be installed on the wall adjacent to the **latch side of the door**. Where there is no wall space to the latch side of the door, including at double leaf doors, signs shall be placed on the nearest adjacent wall. Mounting height shall be **60"** above the finish floor to the centerline of the sign. Mounting location for such signage shall be so that a person may approach within 3" of signage without encountering protruding objects or standing within the swing of a door.

4.30.7 Symbols of Accessibility.

(1) Facilities and elements required to be identified as accessible shall use the international symbol of accessibility. The symbol shall be displayed.

(2) Volume Control Telephones. Telephones required to have a volume control shall be identified by a sign containing a depiction of a telephone handset with radiating sound waves.

(3) Text Telephones (TTYs). Text telephones (TTYs) required shall be identified by the international TTY symbol. In addition, if a facility has a public text telephone (TTY), directional signage indicating the location of the nearest text telephone (TTY) shall be placed adjacent to all banks of telephones, which do not contain a text telephone (TTY). Such directional signage shall include the international TTY symbol. If a facility has no banks of telephones, the directional signage shall be provided at the entrance (e.g., in a building directory).

- Yes-ON SIGN @ PARKING**

- No-NOT ON REST ROOMS**
- Non Applicable at this site

Comments:



(a) Proportions International Symbol of Accessibility

# CHECKLIST FOR FACILITY ACCESSIBILITY

District \_\_\_\_\_ Building Name **Hathaway EB RA**  
 Address **I-94 Eb 113.5** Date of Inventory: **4/24/2008**

## Instructions for completing checklist:

- 1) YES, if element exists and complies.
- 2) NO, if element exists and does not comply. Comment on what does not comply and the reason why.
- 3) NON APPLICABLE, if element does not exist

## ADAAG 4.3.11.1 – AREAS OF RESCUE ASSISTANCE

**4.3.11.1 Location and construction.** An area of rescue assistance shall be a portion of a stairway landing

**4.3.11.2 Size.** Each area of rescue assistance shall provide at least two accessible areas each being not less than 30" by 48".

**4.3.11.3 Stairway Width.** Stairway adjacent to area of rescue assist. - min. clear width of 48" b/tw handrails

**4.3.11.4 Two-way Communication.** Method of two-way communication, visible and audible signals, between each area of rescue assistance and the primary entry.

**4.3.11.5 Identification.** "AREA OF RESCUE ASSISTANCE" sign displays the international symbol of accessibility. Signage installed at all inaccessible exits, with directions to rescue assistance

- Yes  No  Non Applicable at this site

Comments:

## ADAAG 4.4 – PROTRUDING OBJECTS

**4.4.1 General.** Objects projecting <= 4" from walls (for example, telephones) if leading edges between 27" and 80" above the finished floor for walks, halls, corridors, passageways, or aisles. **YES**

Objects mounted with their leading edges at or below 27" above the finished floor may protrude any amount. Free-standing objects mounted on posts or pylons overhang 12" maximum from 27" to 80" above ground/floor. Protruding objects shall not reduce the clear width of an accessible route or maneuvering space.

- Yes  No  Non Applicable at this site

Comments:

## ADAAG 4.7 – CURB RAMPS

**4.7.1 Location.** Curb ramps shall be provided wherever an accessible route crosses a curb. **YES**

**4.7.2 Slope.** Slopes measured as shown in figures: Max curb ramp slope <= 1:12 or 8.33%. Flush and clear transitions from ramps to walks, gutters, or streets with no abrupt changes. **YES**

**4.7.3 Width.** The minimum width of a curb ramp shall be 36", exclusive of the flared sides. **YES**

**4.7.4 Surface.** Surfaces of curb ramps shall be firm, stable and slip resistant **YES**

**4.7.5 Sides of Curb Ramps.** Curb ramps located where pedestrians walk across ramp, or where not protected by handrails or guardrails, must have flared sides; the maximum slope of the flare shall be 1:10. Curb ramps with returned curbs may be used where pedestrians would not normally walk across the ramp. **YES**

**4.7.6 Built-up Curb Ramps.** Built-up curb ramps located so they do not project into vehicular traffic lanes. **YES**

**4.7.8 Obstructions.** Curb ramps shall be located or protected to prevent their obstruction by parked vehicles.

- Yes  No  Non Applicable at this site

Comments:

## ADAAG 4.6 – PARKING AND PASSENGER LOADING ZONES

**4.6.1 Minimum Number.** Parking spaces required to be accessible shall comply with matrix & 4.6.2 through 4.6.4.

- Yes  No  Non Applicable at this site

Comments:

**4.6.2 Location.** Accessible parking spaces on shortest accessible route from parking to an accessible entrance.

- Yes  No  Non Applicable at this site

Comments:

**4.6.3 Parking Spaces.** Accessible parking spaces >= 96" wide. Parking access aisles part of accessible route to the building or facility entrance. Two accessible parking spaces can share aisle. Parked vehicle overhangs shall not reduce the clear width of an accessible route. Parking spaces and access aisles level with surface slopes not exceeding 1:50 (2%) in all directions.

- Yes  No  Non Applicable at this site

Comments:

**4.6.4 Signage.** Accessible parking spaces reserved by a sign showing the symbol of accessibility. Spaces comply with van accessible provisions. Spaces and have an additional "Van-Accessible" sign mounted below the symbol of accessibility. Signs are not obscured by a vehicle parked in spaces. See matrix: # spaces.

- Yes  No  Non Applicable at this site

Comments:

### PARKING SPACE MATRIX

Total Parking in Lot	Required Minimum Number of Accessible
1 to 25	1
26 to 50	2
51 to 75	3
76 to 100	4
101 to 150	5
151 to 200	6
201 to 300	7

# Parking Spots	
Trucks	11
Autos	10
ADA	4

## ADAAG 4.32 – FIXED OR BUILT-IN SEATING AND TABLES

**4.32.4 Height of Tables or Counters.** The tops of accessible tables and counters shall be from 28" to 34" above the finish floor or ground.

- Yes  No  Non Applicable at this site

Comments:

## EMERGENCY EGRESS

**ADAAG 4.1.3(8)** Because entrances also serve as emergency exits whose proximity to all parts of buildings and facilities is essential, it is preferable that all entrances be accessible.

- Yes  No  Non Applicable at this site

Comments:



**ADAAG 4.9 – STAIRS**

- 4.9.4 Handrails.** Stairways have handrails at both sides of all stairs and have the these features:
- (1) Handrails are continuous along both sides of stairs including inside handrail on switchback or dogleg stairs
  - (2) If handrails are not continuous, they extend >= 12" beyond the top riser and >= 12" plus the width of one tread beyond bottom riser. At the top, extension is parallel with the floor or ground. At bottom, handrail continues to slope for a length of one tread width from the bottom riser; the remainder of the extension shall be horizontal.
  - (3) Clear space between handrails and wall is 1-1/2".
  - (4) Gripping surfaces shall be uninterrupted by newel posts, other construction elements, or obstructions.
  - (5) Top of handrail gripping surface shall be mounted between 34" and 38" above stair nosings.
  - (6) Ends of handrails shall be either rounded or returned smoothly to floor, wall or post.
  - (7) Handrails shall not rotate within their fittings.

Yes       No       **Non Applicable at this site**

Comments:

**NONE**

**Ramps Suppment**      Ramps have 5 level pad at every 30 lineal feet  
 Ramps longer than 6 feet have railings on each side  
 Ramps rise no more than 30 inches for every 30 feet traveled  
 Accessible route always >= 36"


**ADAAG 4.15 – DRINKING FOUNTAINS AND WATER COOLERS**

**4.15.1 Minimum Number.** Drinking fountains or water coolers required to be accessible shall comply. **YES**

**4.15.2 Spout Height.** Spouts shall be no higher than **36"** from floor or ground surfaces to the spout **YES**

**4.15.3 Spout Location.** The spouts of drinking fountains and water coolers shall be at the front of the unit and shall direct the water flow in a trajectory that is parallel or nearly parallel to the front of the unit. The spout shall provide a flow of water at least 4" high so as to allow the insertion of a cup or glass under the flow of water. On an accessible drinking fountain with a round or oval bowl, the spout must be positioned so the flow of water is within 3" of the front edge of the fountain. **YES**

**4.15.4 Controls.** Unit **controls** shall be front mounted or side mounted near the front edge. **YES**

**4.15.5 Clearances.**  
 (1) Wall- and post-mounted cantilevered units shall have a clear knee space between the bottom of the apron and the floor or ground at least 27" high, 30" wide, and 17" to 19" deep. Such units shall also have a minimum clear floor space **30" by 48"** to allow a person in a wheelchair to approach the unit facing forward. **YES**

(2) Free-standing or built-in units not having a clear space under them shall have a clear floor space at least 30" by 48" that allows a person in a wheelchair to make a parallel approach to the unit. **YES**

**4.1.3(10)(b)** Where more than one drinking fountain or water cooler is provided on a floor, 50 percent of those provided shall comply with 4.15 and shall be on an accessible route.

**Yes**       No       Non Applicable at this site

Comments:

**Sinks**

no more than 34" high? **NO 34.5"**  
 at least 29" from bottom of sink to floor? **YES 30.5"**  
 30"x48" clear space in front?  
 bottom edge of mirror no more than 40" **NO 41.5"**

**ADAAG 4.13 – DOORS**

**32 inch clear opening at entry**

**4.13.8 Thresholds at Doorways.** Thresholds at doorways shall not exceed 3/4" in height for exterior sliding doors or 1/2" for other types of doors. Raised thresholds and floor level changes at accessible doorways shall be beveled with a slope no greater than 1:2. **YES**

**4.13.9 Door Hardware.** Handles, pulls, latches, locks, and other operating devices on accessible doors shall have a shape that is easy to grasp with one hand and does not require tight grasping, tight pinching, or twisting of the wrist to operate. Lever-operated mechanisms, push-type mechanisms, and U-shaped handles are acceptable designs. When sliding doors are fully open, operating hardware shall be exposed and usable from both sides. Hardware required for accessible door passage shall be mounted no higher than **48"** above finished floor.

**4.13.10 Door Closers.** If a door has a closer, then the sweep period of the closer shall be adjusted so that from an open position of 70 degrees, the door will take at least **3 seconds** to move to a point 3" from the latch, measured to the leading edge of the door. **YES**

**4.13.11 Door Opening Force.** The maximum force for pushing or pulling open a door shall be as follows:  
 (1) Fire doors shall have the minimum opening force allowable by the appropriate administrative authority.  
 (2) Other doors.  
     (a) exterior hinged doors: (Reserved)  
     (b) interior hinged doors: **5 lbf** (22.2N) **YES**  
     (c) sliding or folding doors: 5 lbf (22.2N)

These forces do not apply to the force required to retract latch bolts or disengage other devices that may hold the door in a closed position.

**4.13.12 Automatic Doors and Power-Assisted Doors.** If an automatic door is used, then it shall comply with ANSI/BHMA A156.10-1985. Slowly opening, low-powered, automatic doors shall comply with ANSI A156.19-1984. Such doors shall not open to back check faster than 3 seconds and shall require no more than 15 lbf (66.6N) to stop door movement. If a power-assisted door is used, its door-opening force shall comply with 4.13.11 and it's closing shall conform to the requirements in ANSI A156.19-1984.  
 Yes       No       **Non Applicable at this site**

Comments:

**ADAAG 4.14 – ENTRANCES**

**4.14.1 Minimum Number.** Entrances required to be accessible shall be part of an accessible route. Such entrances shall be connected by an accessible route to public transportation stops, to accessible parking and passenger loading zones, and to public streets or sidewalks if available. They shall also be connected by an accessible route to all accessible spaces or elements within the building or facility. **YES**

**4.1.3(8)(a)** At least 50 percent of all public entrances must be accessible. At least one must be a ground floor entrance. Public entrances are any entrances that are not loading or service entrances. In facilities subject to Title II of the ADA, all planned principal public entrances shall be included within the 50 percent of public entrances required to be accessible. This provision does not require the number of principal public entrances to exceed 50 percent of all public entrances planned for a facility. **YES**

**4.14.2 Service Entrances.** A service entrance shall not be the sole accessible entrance unless it is the only entrance to a building or facility (for example, in a factory or garage). **YES**

**4.1.3(7)(d)** Entrances which are not accessible shall have directional signage complying the ADAAG which indicate the location of the nearest accessible entrance.

**Yes**       No       Non Applicable at this site

Comments:

**ADAAG 4.16 – WATER CLOSETS through ADAAG 4.26 HANDRAILS**

These sections of the ADAAG deal specifically with accessible features of restrooms, water closets, and bathing facilities.

4.1.3(11) Toilet Facilities. If toilet rooms are provided, then each public and common use toilet room shall comply with 4.22. Other toilet rooms provided for the use of occupants of specific spaces (i.e., a private toilet room for the occupant a private office) shall be adaptable. If bathing rooms are provided, then each public and common use bathroom shall comply with 4.23. Accessible toilet rooms and bathing facilities shall be on an accessible route.

- Yes
- No
- Non Applicable here
- Comments

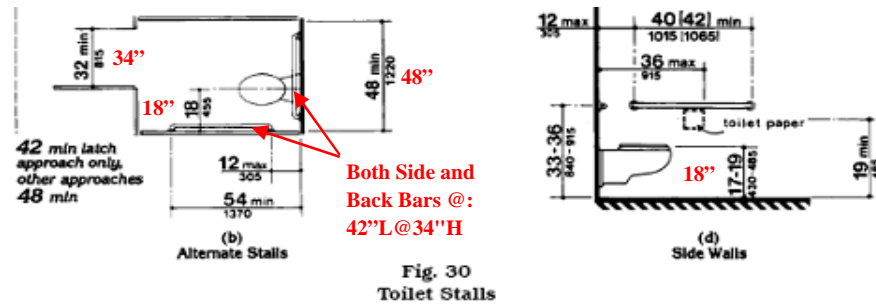


Fig. 30 Toilet Stalls

Doorway is 32" clear?  
 Grab bars behind and on side of stall?  
 5'x5' or 3'x5.5' or 4'x5.5' clear space in front of h/c stall?

YES
YES
YES

**ADAAG 4.27 – CONTROLS AND OPERATING MECHANISMS**

4.27.2 Clear Floor Space. Clear floor space that allows a forward or a parallel approach by a person using a wheelchair shall be provided at controls, dispensers, receptacles, and other operable equipment

- Yes
  - No
  - Non Applicable at this site
- Comments:

**ADAAG 4.31 – TELEPHONES**

**NONE**

4.31.1 General. Public telephones required to be accessible shall comply with 4.31.

4.31.2 Clear Floor or Ground Space. A clear floor or ground space at least 30" by 48" that allows either a forward or parallel approach by a person using a wheelchair shall be provided at telephones. The clear floor or ground space shall comply. Bases, enclosures, and fixed seats shall not impede approaches to telephones by people who use wheelchairs.

4.31.3 Mounting Height. The highest operable part of the telephone shall be 48" for a forward wheelchair approach and 54" for a parallel wheelchair approach.

4.31.6 Controls. Telephones shall have pushbutton controls where service for such equipment is available.

4.31.9 Text Telephones (TTYs) Required by 4.1.

3) Equivalent facilitation may be provided. For example, a portable text telephone (TTY) may be made available in a hotel at the registration desk if it is available on a 24-hour basis for use with nearby public pay telephones. In this instance, at least one pay telephone shall comply with paragraph 2 of this section. In addition, if an acoustic coupler is used, the telephone handset cord shall be sufficiently long so as to allow connection of the text telephone (TTY) and the telephone receiver. Directional signage shall be provided and shall comply.

- Yes
- No
- Non Applicable at this site

Comments:

**ADAAG 4.30 – SIGNAGE**

\*Sign on wall ripped off on mens side, door sign not in braille, but @ right height

4.30.1 General. Signage required to be accessible shall comply with the applicable provisions of 4.30.

**YES**

4.30.2 Character Proportion. Letters and numbers on signs shall have a width-to-height ratio between 3:5 and 1:1 and a stroke-width-to-height ratio between 1:5 and 1:10.

**YES**

4.30.3 Character Height. Characters and numbers on signs shall be sized according to the viewing distance from which they are to be read. The minimum height is measured using an upper case X. Lower case characters are permitted.

**YES**

4.30.4 Raised and Braille Characters and Pictorial Symbol Signs (Pictograms). Letters and numerals shall be raised 1/32" minimum, upper case, sans serif or simple serif type and shall be accompanied with Grade 2 Braille. Raised characters shall be at least 5/8" high, but no higher than 2". Pictograms shall be accompanied by the equivalent verbal description placed directly below the pictogram. The border dimension of the pictogram shall be 6" minimum in height.

**NO**

4.30.5 Finish and Contrast. The characters and background of signs shall be eggshell, matte, or other non-glare finish. Characters and symbols shall contrast with their background -- either light characters on a dark background or dark characters on a light background.

**YES**

4.30.6 Mounting Location and Height. Where permanent identification is provided for rooms and spaces, signs shall be installed on the wall adjacent to the **latch side of the door**. Where there is no wall space to the latch side of the door, including at double leaf doors, signs shall be placed on the nearest adjacent wall. Mounting height shall be **60"** above the finish floor to the centerline of the sign. Mounting location for such signage shall be so that a person may approach within 3" of signage without encountering protruding objects or standing within the swing of a door.

**YES**

4.30.7 Symbols of Accessibility.

- (1) Facilities and elements required to be identified as accessible shall use the international symbol of accessibility. The symbol shall be displayed.
- (2) Volume Control Telephones. Telephones required to have a volume control shall be identified by a sign containing a depiction of a telephone handset with radiating sound waves.
- (3) Text Telephones (TTYs). Text telephones (TTYs) required shall be identified by the international TTY symbol. In addition, if a facility has a public text telephone (TTY), directional signage indicating the location of the nearest text telephone (TTY) shall be placed adjacent to all banks of telephones, which do not contain a text telephone (TTY). Such directional signage shall include the international TTY symbol. If a facility has no banks of telephones, the directional signage shall be provided at the entrance (e.g., in a building directory).

**Yes-ON PARKING SIGN AND ON DOOR**

- No
- Non Applicable at this site

Comments:



(a) Proportions International Symbol of Accessibility



# CHECKLIST FOR FACILITY ACCESSIBILITY

District \_\_\_\_\_ Building Name **Hathaway WB RA**  
 Address **I-94 WB 112.6** Date of Inventory: **4/24/2008**

## Instructions for completing checklist:

- 1) YES, if element exists and complies.
- 2) NO, if element exists and does not comply. Comment on what does not comply and the reason why.
- 3) NON APPLICABLE, if element does not exist

## ADAAG 4.3.11.1 – AREAS OF RESCUE ASSISTANCE **NONE**

4.3.11.1 Location and construction. An area of rescue assistance shall be a portion of a stairway landing

4.3.11.2 Size. Each area of rescue assistance shall provide at least two accessible areas each being not less than 30" by 48".

4.3.11.3 Stairway Width. Stairway adjacent to area of rescue assist. - min. clear width of 48" b/tw handrails

4.3.11.4 Two-way Communication. Method of two-way communication, visible and audible signals, between each area of rescue assistance and the primary entry.

4.3.11.5 Identification. "AREA OF RESCUE ASSISTANCE" sign displays the international symbol of accessibility. Signage installed at all inaccessible exits, with directions to rescue assistance

Yes  No  **Non Applicable at this site**

Comments:

## ADAAG 4.4 – PROTRUDING OBJECTS

4.4.1 General. Objects projecting <= 4" from walls (for example, telephones) if leading edges between 27" and 80" above the finished floor for walks, halls, corridors, passageways, or aisles. **YES**

Objects mounted with their leading edges at or below 27" above the finished floor may protrude any amount. Free-standing objects mounted on posts or pylons overhang 12" maximum from 27" to 80" above ground/floor. Protruding objects shall not reduce the clear width of an accessible route or maneuvering space.

**Yes**  No  Non Applicable at this site

Comments:

## ADAAG 4.7 – CURB RAMPS

4.7.1 Location. Curb ramps shall be provided wherever an accessible route crosses a curb. **YES**

4.7.2 Slope. Slopes measured as shown in figures: Max curb ramp slope <= 1:12 or 8.33%. Flush and clear transitions from ramps to walks, gutters, or streets with no abrupt changes. **YES**

4.7.3 Width. The minimum width of a curb ramp shall be 36", exclusive of the flared sides. **YES**

4.7.4 Surface. Surfaces of curb ramps shall be firm, stable and slip resistant **YES**

4.7.5 Sides of Curb Ramps. Curb ramps located where pedestrians walk across ramp, or where not protected by handrails or guardrails, must have flared sides; the maximum slope of the flare shall be 1:10. Curb ramps with returned curbs may be used where pedestrians would not normally walk across the ramp. **YES**

4.7.6 Built-up Curb Ramps. Built-up curb ramps located so they do not project into vehicular traffic lanes. **YES**

4.7.8 Obstructions. Curb ramps shall be located or protected to prevent their obstruction by parked vehicles.

**Yes**  No  Non Applicable at this site

Comments:

## ADAAG 4.6 – PARKING AND PASSENGER LOADING ZONES

4.6.1 Minimum Number. Parking spaces required to be accessible shall comply with matrix & 4.6.2 through 4.6.4.

**Yes**  No  Non Applicable at this site

Comments:

4.6.2 Location. Accessible parking spaces on shortest accessible route from parking to an accessible entrance.

**Yes**  No  Non Applicable at this site

Comments:

4.6.3 Parking Spaces. Accessible parking spaces >= 96" wide. Parking access aisles part of accessible route to the building or facility entrance. Two accessible parking spaces can share aisle. Parked vehicle overhangs shall not reduce the clear width of an accessible route. Parking spaces and access aisles level with surface slopes not exceeding 1:50 (2%) in all directions.

**Yes**  No  Non Applicable at this site

Comments:

4.6.4 Signage. Accessible parking spaces reserved by a sign showing the symbol of accessibility. Spaces comply with van accessible provisions. Spaces and have an additional "Van-Accessible" sign mounted below the symbol of accessibility. Signs are not obscured by a vehicle parked in spaces. See matrix: # spaces.

**Yes**  No  Non Applicable at this site

Comments:

### PARKING SPACE MATRIX

Total Parking in Lot	Required Minimum Number of Accessible
1 to 25	1
26 to 50	2
51 to 75	3
76 to 100	4
101 to 150	5
151 to 200	6
201 to 300	7

# Parking Spots	
Trucks	11
Autos	7
ADA	4

## ADAAG 4.32 – FIXED OR BUILT-IN SEATING AND TABLES

4.32.4 Height of Tables or Counters. The tops of accessible tables and counters shall be from 28" to 34" above the finish floor or ground.

**Yes**  No  Non Applicable at this site

Comments:

## EMERGENCY EGRESS

ADAAG 4.1.3(8) Because entrances also serve as emergency exits whose proximity to all parts of buildings and facilities is essential, it is preferable that all entrances be accessible.

**Yes**  No  Non Applicable at this site

Comments:

**ADAAG 4.9 – STAIRS**

- 4.9.4 Handrails.** Stairways have handrails at both sides of all stairs and have the these features:
- (1) Handrails are continuous along both sides of stairs including inside handrail on switchback or dogleg stairs
  - (2) If handrails are not continuous, they extend >= 12" beyond the top riser and >= 12" plus the width of one tread beyond bottom riser. At the top, extension is parallel with the floor or ground. At bottom, handrail continues to slope for a length of one tread width from the bottom riser; the remainder of the extension shall be horizontal.
  - (3) Clear space between handrails and wall is 1-1/2".
  - (4) Gripping surfaces shall be uninterrupted by newel posts, other construction elements, or obstructions.
  - (5) Top of handrail gripping surface shall be mounted between 34" and 38" above stair nosings.
  - (6) Ends of handrails shall be either rounded or returned smoothly to floor, wall or post.
  - (7) Handrails shall not rotate within their fittings.

Yes       No       **Non Applicable at this site**

Comments:

\*RAMPS:NONE MOSTLY LEVEL WALKWAYS, CLEAR AND FLAT

<b>Ramps Support</b>	Ramps have 5 level pad at every 30 lineal feet	
	Ramps longer than 6 feet have railings on each side	
	Ramps rise no more than 30 inches for every 30 feet traveled	
	Accessible route always >= 36"	

**ADAAG 4.15 – DRINKING FOUNTAINS AND WATER COOLERS**

**4.15.1 Minimum Number.** Drinking fountains or water coolers required to be accessible shall comply. **YES**

**4.15.2 Spout Height.** Spouts shall be no higher than **36"** from floor or ground surfaces to the spout **YES**

**4.15.3 Spout Location.** The spouts of drinking fountains and water coolers shall be at the front of the unit and shall direct the water flow in a trajectory that is parallel or nearly parallel to the front of the unit. The spout shall provide a flow of water at least 4" high so as to allow the insertion of a cup or glass under the flow of water. On an accessible drinking fountain with a round or oval bowl, the spout must be positioned so the flow of water is within 3" of the front edge of the fountain. **YES**

**4.15.4 Controls.** Unit **controls** shall be front mounted or side mounted near the front edge. **YES**

**4.15.5 Clearances.**  
 (1) Wall- and post-mounted cantilevered units shall have a clear knee space between the bottom of the apron and the floor or ground at least 27" high, 30" wide, and 17" to 19" deep. Such units shall also have a minimum clear floor space **30" by 48"** to allow a person in a wheelchair to approach the unit facing forward. **YES**

(2) Free-standing or built-in units not having a clear space under them shall have a clear floor space at least 30" by 48" that allows a person in a wheelchair to make a parallel approach to the unit. **YES**

**4.1.3(10)(b)** Where more than one drinking fountain or water cooler is provided on a floor, 50 percent of those provided shall comply with 4.15 and shall be on an accessible route.

**Yes**       No       Non Applicable at this site

Comments:

**Sinks**

no more than 34" high?	<b>NO 34.5"</b>
at least 29" from bottom of sink to floor?	<b>YES 30.5"</b>
30"x48" clear space in front?	
bottom edge of mirror no more than 40"	<b>NO 42"</b>

**ADAAG 4.13 – DOORS**

**32 inch clear opening at entry**

**4.13.8 Thresholds at Doorways.** Thresholds at doorways shall not exceed 3/4" in height for exterior sliding doors or 1/2" for other types of doors. Raised thresholds and floor level changes at accessible doorways shall be beveled with a slope no greater than 1:2. **YES**

**4.13.9 Door Hardware.** Handles, pulls, latches, locks, and other operating devices on accessible doors shall have a shape that is easy to grasp with one hand and does not require tight grasping, tight pinching, or twisting of the wrist to operate. Lever-operated mechanisms, push-type mechanisms, and U-shaped handles are acceptable designs. When sliding doors are fully open, operating hardware shall be exposed and usable from both sides. Hardware required for accessible door passage shall be mounted no higher than **48"** above finished floor.

**4.13.10 Door Closers.** If a door has a closer, then the sweep period of the closer shall be adjusted so that from an open position of 70 degrees, the door will take at least **3 seconds** to move to a point 3" from the latch, measured to the leading edge of the door. **YES**

**4.13.11 Door Opening Force.** The maximum force for pushing or pulling open a door shall be as follows:  
 (1) Fire doors shall have the minimum opening force allowable by the appropriate administrative authority.  
 (2) Other doors.

- (a) exterior hinged doors: (Reserved)
- (b) interior hinged doors: **5 lbf** (22.2N) **YES**
- (c) sliding or folding doors: 5 lbf (22.2N)

These forces do not apply to the force required to retract latch bolts or disengage other devices that may hold the door in a closed position.

**4.13.12 Automatic Doors and Power-Assisted Doors.** If an automatic door is used, then it shall comply with ANSI/BHMA A156.10-1985. Slowly opening, low-powered, automatic doors shall comply with ANSI A156.19-1984. Such doors shall not open to back check faster than 3 seconds and shall require no more than 15 lbf (66.6N) to stop door movement. If a power-assisted door is used, its door-opening force shall comply with 4.13.11 and it's closing shall conform to the requirements in ANSI A156.19-1984.  
 Yes       No       **Non Applicable at this site**

Comments:

**ADAAG 4.14 – ENTRANCES**

**4.14.1 Minimum Number.** Entrances required to be accessible shall be part of an accessible route. Such entrances shall be connected by an accessible route to public transportation stops, to accessible parking and passenger loading zones, and to public streets or sidewalks if available. They shall also be connected by an accessible route to all accessible spaces or elements within the building or facility. **YES**

**4.1.3(8)(a)** At least 50 percent of all public entrances must be accessible. At least one must be a ground floor entrance. Public entrances are any entrances that are not loading or service entrances. In facilities subject to Title II of the ADA, all planned principal public entrances shall be included within the 50 percent of public entrances required to be accessible. This provision does not require the number of principal public entrances to exceed 50 percent of all public entrances planned for a facility. **YES**

**4.14.2 Service Entrances.** A service entrance shall not be the sole accessible entrance unless it is the only entrance to a building or facility (for example, in a factory or garage). **YES**

**4.1.3(7)(d)** Entrances which are not accessible shall have directional signage complying the ADAAG which indicate the location of the nearest accessible entrance.

**Yes**       No       Non Applicable at this site

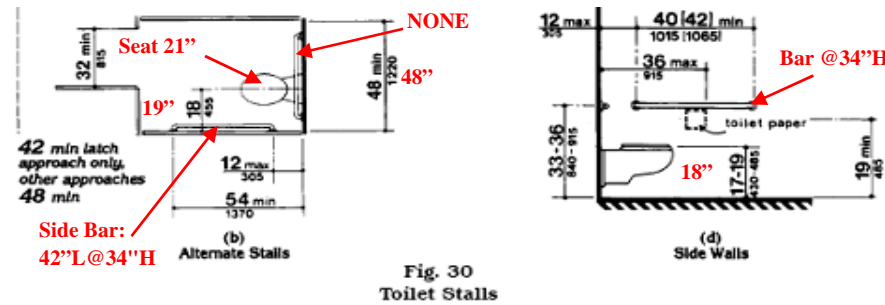
Comments:

**ADAAG 4.16 – WATER CLOSETS through ADAAG 4.26 HANDRAILS**

These sections of the ADAAG deal specifically with accessible features of restrooms, water closets, and bathing facilities.

4.1.3(11) Toilet Facilities. If toilet rooms are provided, then each public and common use toilet room shall comply with 4.22. Other toilet rooms provided for the use of occupants of specific spaces (i.e., a private toilet room for the occupant a private office) shall be adaptable. If bathing rooms are provided, then each public and common use bathroom shall comply with 4.23. Accessible toilet rooms and bathing facilities shall be on an accessible route.

- Yes
- No
- Non Applicable here
- Comments



Doorway is 32" clear?  
 Grab bars behind and on side of stall?  
 5'x5' or 3'x5.5' or 4'x5.5' clear space in front of h/c stall?

YES 33.5"
NO
YES

**ADAAG 4.27 – CONTROLS AND OPERATING MECHANISMS**

4.27.2 Clear Floor Space. Clear floor space that allows a forward or a parallel approach by a person using a wheelchair shall be provided at controls, dispensers, receptacles, and other operable equipment

- Yes
  - No
  - Non Applicable at this site
- Comments:

**ADAAG 4.31 – TELEPHONES**

NONE

4.31.1 General. Public telephones required to be accessible shall comply with 4.31.

4.31.2 Clear Floor or Ground Space. A clear floor or ground space at least 30" by 48" that allows either a forward or parallel approach by a person using a wheelchair shall be provided at telephones. The clear floor or ground space shall comply. Bases, enclosures, and fixed seats shall not impede approaches to telephones by people who use wheelchairs.

4.31.3 Mounting Height. The highest operable part of the telephone shall be 48" for a forward wheelchair approach and 54" for a parallel wheelchair approach.

4.31.6 Controls. Telephones shall have pushbutton controls where service for such equipment is available.

4.31.9 Text Telephones (TTYs) Required by 4.1.

3) Equivalent facilitation may be provided. For example, a portable text telephone (TTY) may be made available in a hotel at the registration desk if it is available on a 24-hour basis for use with nearby public pay telephones. In this instance, at least one pay telephone shall comply with paragraph 2 of this section. In addition, if an acoustic coupler is used, the telephone handset cord shall be sufficiently long so as to allow connection of the text telephone (TTY) and the telephone receiver. Directional signage shall be provided and shall comply.

- Yes
- No
- Non Applicable at this site

Comments:

**ADAAG 4.30 – SIGNAGE**

4.30.1 General. Signage required to be accessible shall comply with the applicable provisions of 4.30.

YES

4.30.2 Character Proportion. Letters and numbers on signs shall have a width-to-height ratio between 3:5 and 1:1 and a stroke-width-to-height ratio between 1:5 and 1:10.

YES

4.30.3 Character Height. Characters and numbers on signs shall be sized according to the viewing distance from which they are to be read. The minimum height is measured using an upper case X. Lower case characters are permitted.

YES

4.30.4 Raised and Braille Characters and Pictorial Symbol Signs (Pictograms). Letters and numerals shall be raised 1/32" minimum, upper case, sans serif or simple serif type and shall be accompanied with Grade 2 Braille. Raised characters shall be at least 5/8" high, but no higher than 2". Pictograms shall be accompanied by the equivalent verbal description placed directly below the pictogram. The border dimension of the pictogram shall be 6" minimum in height.

YES ON WALL/NO ON DOOR

4.30.5 Finish and Contrast. The characters and background of signs shall be eggshell, matte, or other non-glare finish. Characters and symbols shall contrast with their background -- either light characters on a dark background or dark characters on a light background.

YES

4.30.6 Mounting Location and Height. Where permanent identification is provided for rooms and spaces, signs shall be installed on the wall adjacent to the latch side of the door. Where there is no wall space to the latch side of the door, including at double leaf doors, signs shall be placed on the nearest adjacent wall. Mounting height shall be 60" above the finish floor to the centerline of the sign. Mounting location for such signage shall be so that a person may approach within 3" of signage without encountering protruding objects or standing within the swing of a door.

NO @ 66" BEHIND TREE/DOOR SIGN HAS NO BRAILLE

4.30.7 Symbols of Accessibility.

- (1) Facilities and elements required to be identified as accessible shall use the international symbol of accessibility. The symbol shall be displayed.
- (2) Volume Control Telephones. Telephones required to have a volume control shall be identified by a sign containing a depiction of a telephone handset with radiating sound waves.
- (3) Text Telephones (TTYs). Text telephones (TTYs) required shall be identified by the international TTY symbol. In addition, if a facility has a public text telephone (TTY), directional signage indicating the location of the nearest text telephone (TTY) shall be placed adjacent to all banks of telephones, which do not contain a text telephone (TTY). Such directional signage shall include the international TTY symbol. If a facility has no banks of telephones, the directional signage shall be provided at the entrance (e.g., in a building directory).

Yes-ON DOORS AND SIGN

- No
- Non Applicable at this site

Comments:



(a) Proportions International Symbol of Accessibility