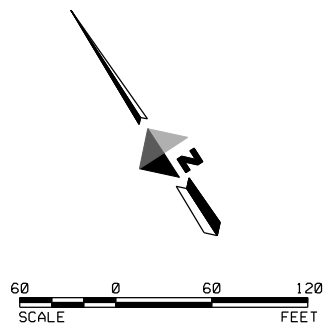
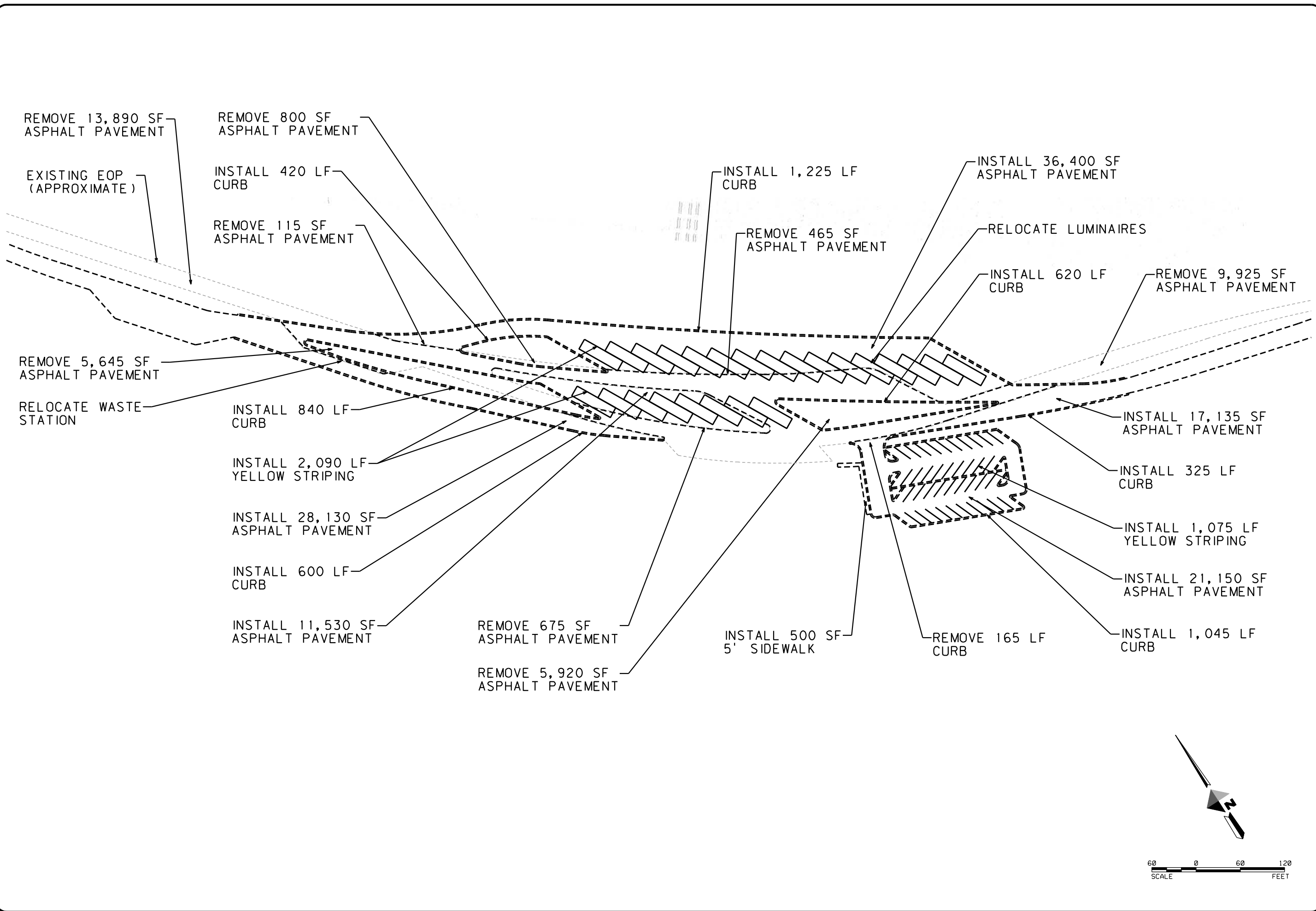

APPENDIX N

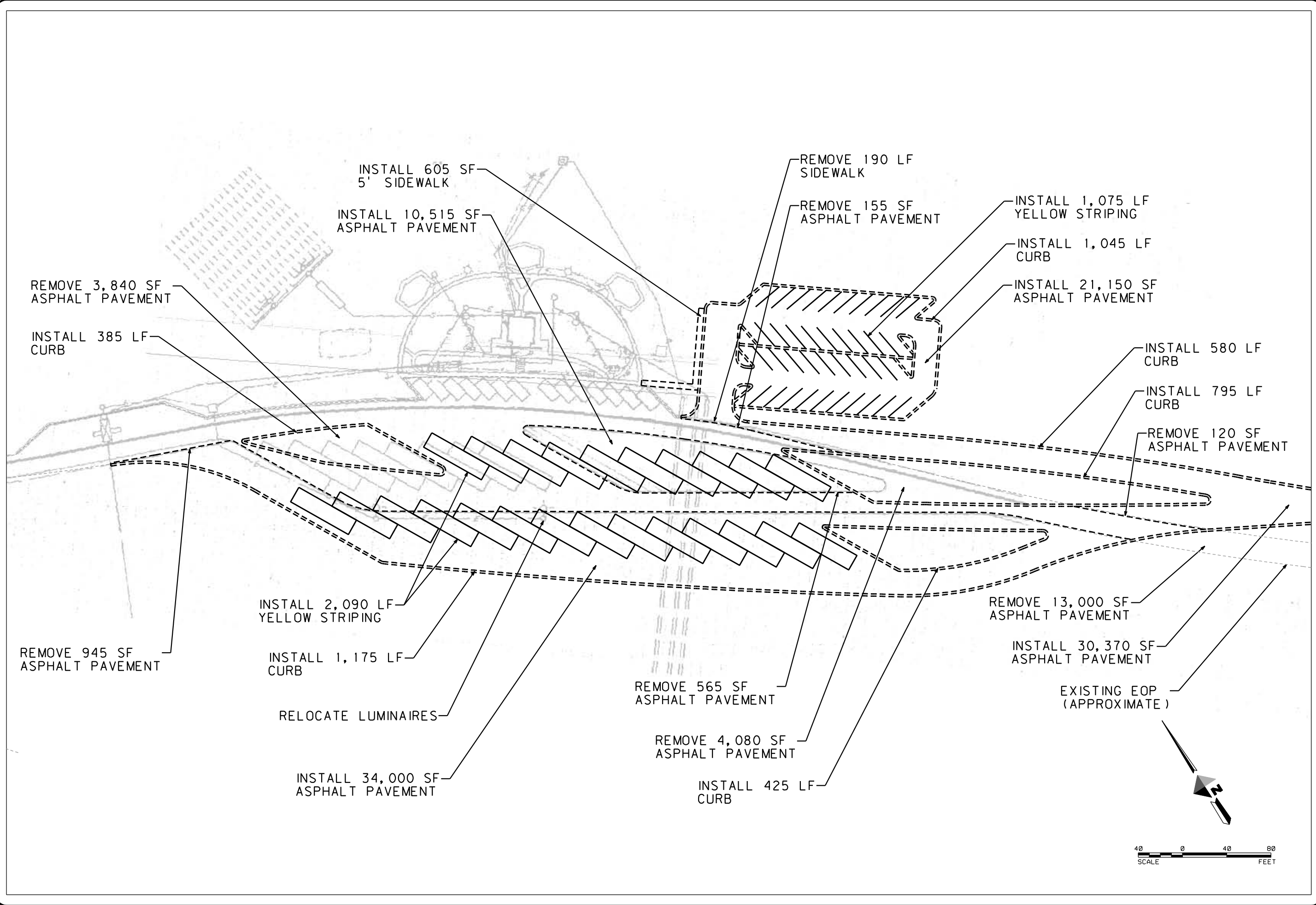


Project No. 4624.10038.01		Greycliff Design Base.dgn		Date	JUNE 2009	Designed	TBG	Drawn	TBG	Checked	PAO	Approved	PAO
<p>I-94 REST AREA CORRIDOR STUDY MONTANA GREYCLIFF REST AREA EAST BOUND SITE IMPROVEMENTS</p>													
<p>WARNING 1 1/2 0 IF THIS BAR DOES NOT MEASURE 1" THEN DRAWING IS NOT TO SCALE</p>													
No.	Revision	By	Date										

PRELIMINARY
NOT FOR CONSTRUCTION

DOWL HKM
 7 WEST 6TH AVE., SUITE 3W
 P.O. BOX 1009
 HELENA, MT 59624
 406-443-3710
 406-443-3717 (FAX)
 SERV@HKM.COM

Sheet No. 1
C-1
 of 2



No.	Revision	By	Date
1			
2			
3			
4			
5			
6			
7			
8			
9			
10			

WARNING
1/2
IF THIS BAR DOES NOT MEASURE 1" THEN DRAWING IS NOT TO SCALE

Project No. 4624.10038.01 • Greycliff Design Base.dgn • Date JUNE 2009 • Designed TBG • Drawn TBG • Checked PAO • Approved PAO

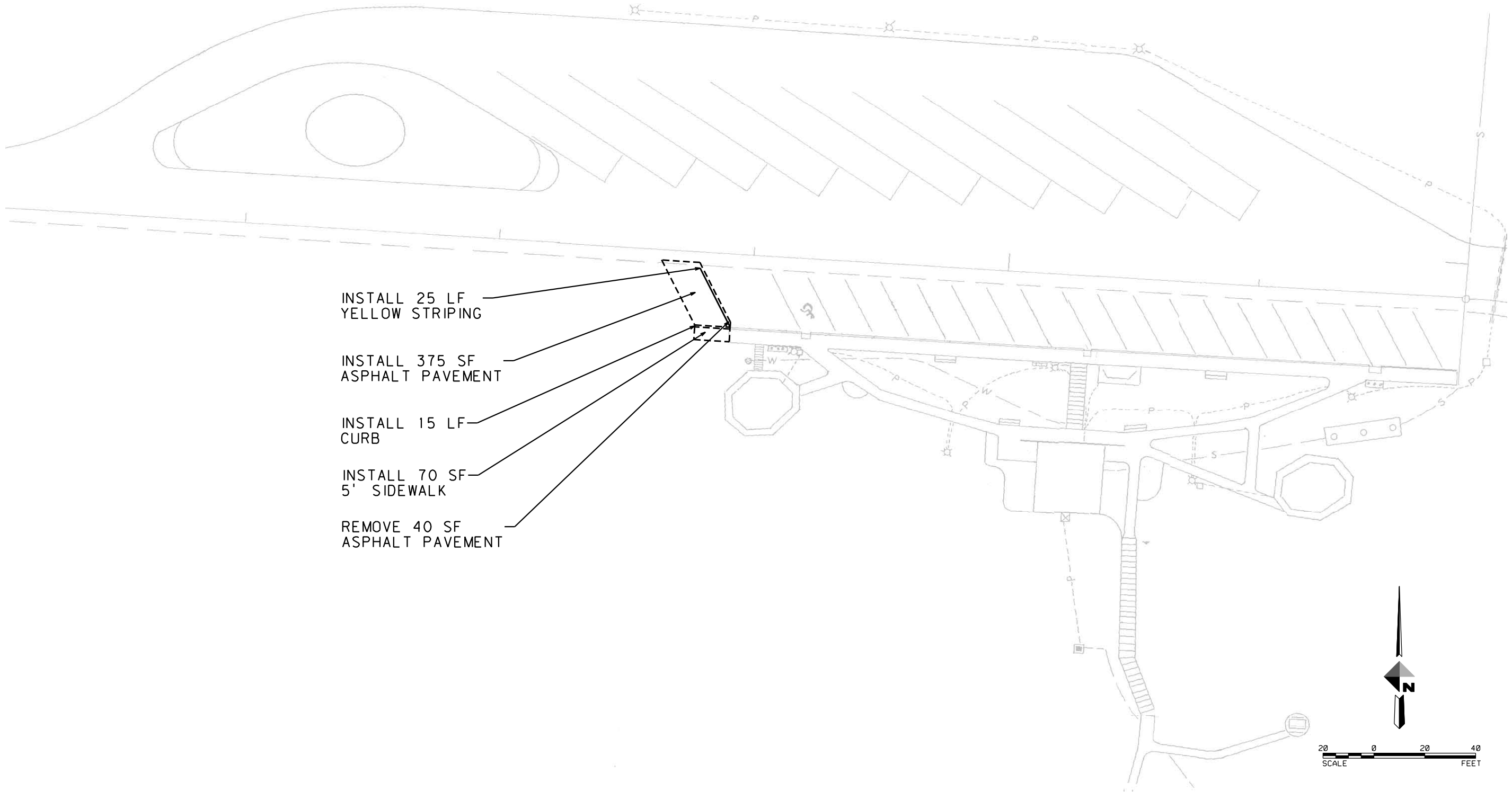
I-94 REST AREA CORRIDOR STUDY
MONTANA

GREYCLIFF REST AREA
WEST BOUND SITE IMPROVEMENTS

PRELIMINARY
NOT FOR CONSTRUCTION

DOWL HKM
7 WEST 6TH AVE., SUITE 3W
P.O. BOX 1009
HELENA, MT 59624
406-443-9370 (FAX)
406-443-9370 (FAX)
www.hkm.com

Sheet No. 2
C-2
of 2



INSTALL 25 LF
YELLOW STRIPING

INSTALL 375 SF
ASPHALT PAVEMENT

INSTALL 15 LF
CURB

INSTALL 70 SF
5' SIDEWALK

REMOVE 40 SF
ASPHALT PAVEMENT

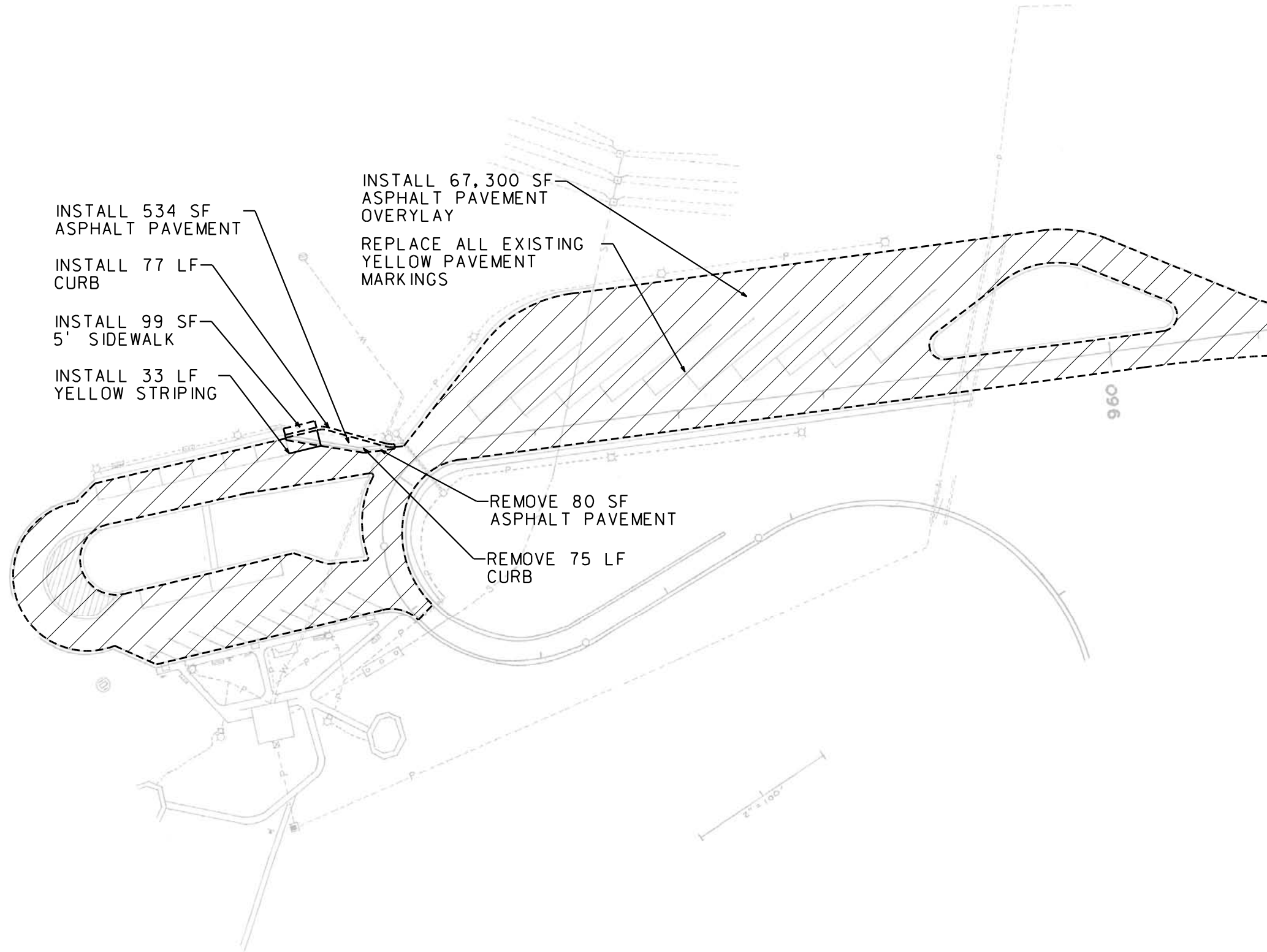
No.	Revision	By	Date

Project No. 4624.10038.01 • Custer Design Base.dgn • Date JUNE 2009 • Designed TBG • Drawn TBG • Checked PAO • Approved PAO
I-94 REST AREA CORRIDOR STUDY
MONTANA
CUSTER REST AREA
EAST BOUND SITE IMPROVEMENTS

PRELIMINARY
NOT FOR CONSTRUCTION

DOWL HKM
 7 WEST 6TH AVE., SUITE 3W
 P.O. BOX 1009
 HELENA, MT 59624
 406.263.7176 (FAX)
 DOWL.HKM.COM

Sheet No. 1
C-1
 of 2



INSTALL 534 SF
ASPHALT PAVEMENT

INSTALL 77 LF
CURB

INSTALL 99 SF
5' SIDEWALK

INSTALL 33 LF
YELLOW STRIPING

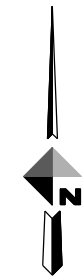
INSTALL 67,300 SF
ASPHALT PAVEMENT
OVERLAY

REPLACE ALL EXISTING
YELLOW PAVEMENT
MARKINGS

REMOVE 80 SF
ASPHALT PAVEMENT

REMOVE 75 LF
CURB

960



SCALE 0 40 80 FEET

PRELIMINARY
NOT FOR CONSTRUCTION

DOWL HKM
7 WEST 6TH AVE., SUITE 3W
P.O. BOX 1009
HELENA, MT 59624
406-442-3770 (PHONE)
406-442-3772 (FAX)
DOWLHKM.COM

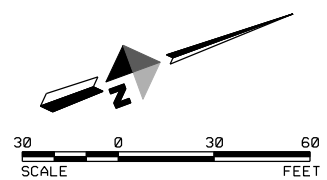
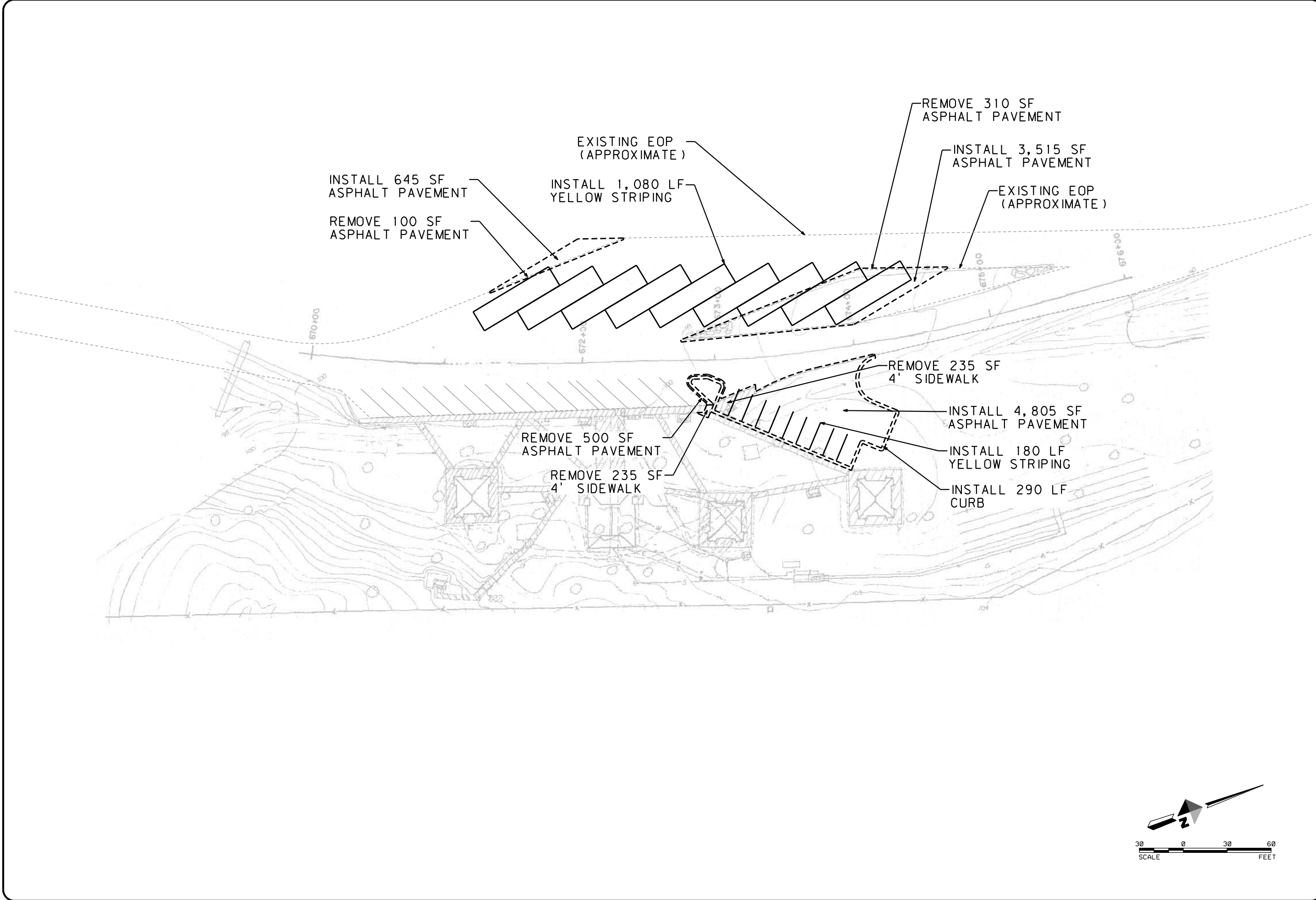
Sheet No. 2
C-2
of 2

Project No. 4624.10038.01 • Custer Design Base.dgn • Date JUNE 2009 • Designed TBG • Drawn TBG • Checked PAO • Approved PAO

I-94 REST AREA CORRIDOR STUDY
MONTANA
CUSTER REST AREA
WEST BOUND SITE IMPROVEMENTS

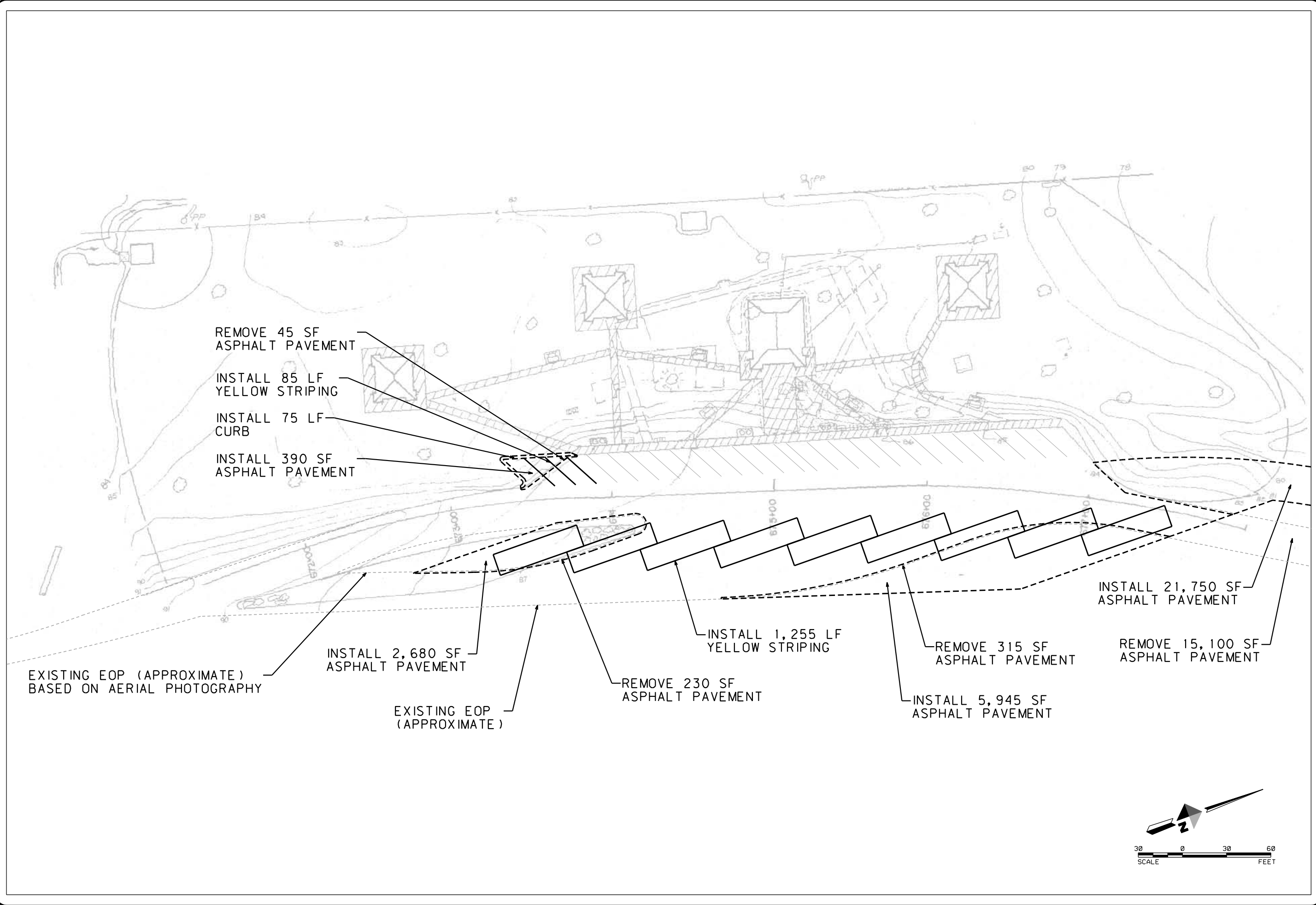
WARNING
IF THIS BAR DOES NOT MEASURE 1" THEN DRAWING IS NOT TO SCALE

No.	Revision	By	Date



Project No. 4624-10039.01		Hysham Design Base.dgn		Date	JUNE 2009	Drawn	TBG	Checked	PAO	Approved	PAO
<p style="text-align: center;">I-94 REST AREA CORRIDOR STUDY MONTANA HYSHAM REST AREA EAST BOUND SITE IMPROVEMENTS</p>											
<p style="text-align: center;">PRELIMINARY NOT FOR CONSTRUCTION</p>											
<p>DOWL HKM 7 WEST 6TH AVE., SUITE 3W P.O. BOX 1009 HELENA, MT 59624 406-261-9376 (PHONE) 406-261-0377 (FAX) DOWL.HKM.COM</p>											
<p>Sheet No. 1 C-1 of 3</p>											

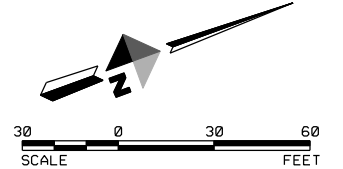
Project No. 4624-10039.01 • Hysham Design Base.dgn • Date JUNE 2009 • Drawn TBG • Checked PAO • Approved PAO
PRELIMINARY
NOT FOR CONSTRUCTION



Project No. 4824.10038.01		Hysham Design Base.dgn		Date	JUNE 2009	Designed	TBG	Drawn	TBG	Checked	PAO	Approved	PAO
<p>I-94 REST AREA CORRIDOR STUDY MONTANA HYSHAM REST AREA WEST BOUND SITE IMPROVEMENTS</p>													
<p>WARNING IF THIS BAR DOES NOT MEASURE 1" IN LENGTH IT IS NOT TO SCALE</p>													
No.	Revision	By	Date										

PRELIMINARY
NOT FOR CONSTRUCTION

DOWL HKM
 7 WEST 6TH AVE., SUITE 3W
 P.O. BOX 1009
 HELENA, MT 59524
 406-243-3710 (FAX)
 DOWL.HKM.COM

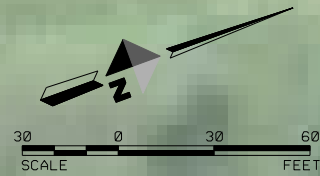




INSTALL 21,750 SF
ASPHALT PAVEMENT

REMOVE 15,100 SF
ASPHALT PAVEMENT

EXISTING EOP
(APPROXIMATE)



PRELIMINARY
NOT FOR CONSTRUCTION

DOWL HKM
7 WEST 6TH AVE., SUITE 3W
P.O. BOX 1009
HELENA, MT 59524
406-243-5775 (FAX)
DOWL.HKM.COM

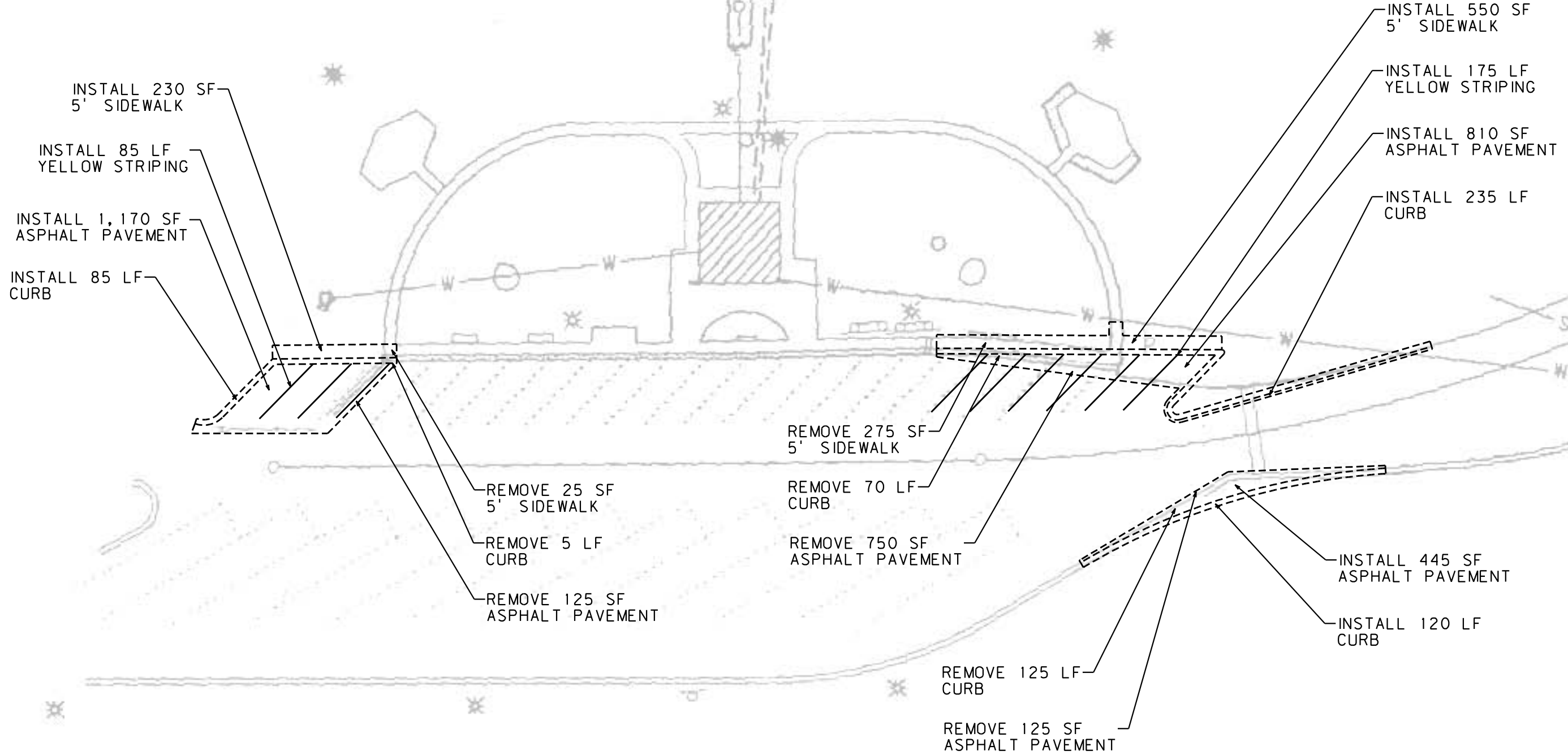
Sheet No. 3
C-3
of 3

Project No. 4824.10038.01 • Hysham Design Base.dgn • Date JUNE 2009 • Design TBG • Drawn TBG • Checked PAO • Approved PAO

No.	Revision	By	Date

WARNING
IF THIS BAR DOES NOT MEASURE 1" BY 1/2" DRAWING IS NOT TO SCALE

I-94 REST AREA CORRIDOR STUDY
MONTANA
HYSHAM REST AREA
WEST BOUND SITE IMPROVEMENTS



No.	Revision	By	Date

WARNING
 IF THIS BAR DOES NOT MEASURE 1" NOT TO SCALE
 IF THIS BAR DOES NOT MEASURE 1" NOT TO SCALE

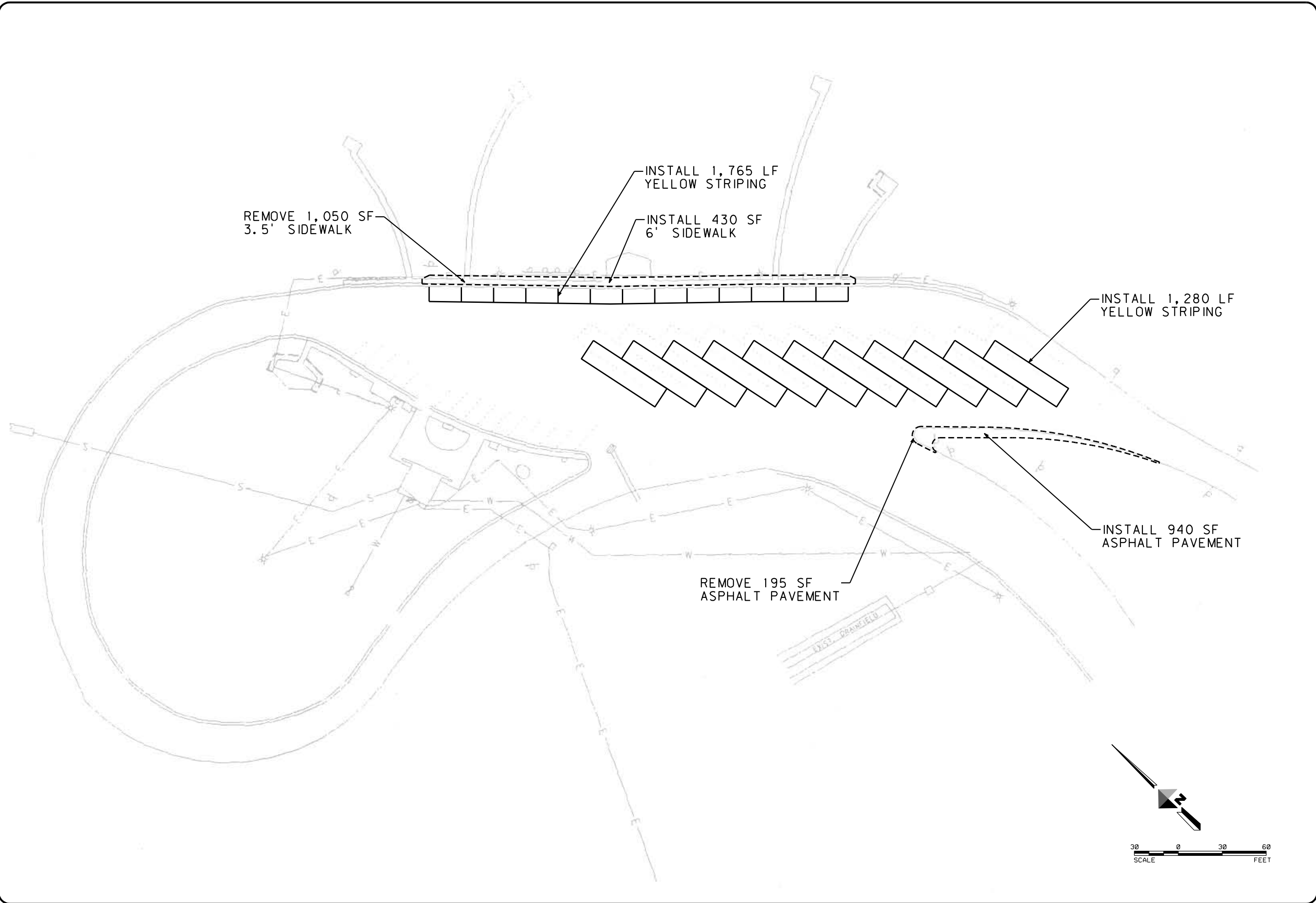
Project No. 4624-10039.01 • Hathaway Design Base.dgn • Date JUNE 2009 • Drawn TBG • Checked PAO • Approved PAO

I-94 REST AREA CORRIDOR STUDY
MONTANA
HATHAWAY REST AREA
EAST BOUND SITE IMPROVEMENTS

PRELIMINARY
NOT FOR CONSTRUCTION

DOWL HKM
 7 WEST 6TH AVE., SUITE 3W
 P.O. BOX 1009
 HELENA, MT 59624
 406-442-5976 (PHONE)
 406-442-0377 (FAX)
 DOWL.HKM.COM

Sheet No. 1
C-1
 of 2



Project No. 4824.10038.01 • Hathaway Design Base.dgn • Date JUNE 2009 • Designed TBG • Drawn TBG • Checked PAO • Approved PAO

No.	Revision	By	Date
1			
2			
3			
4			
5			
6			
7			
8			
9			
10			

WARNING
 0 1/2 1
 IF THIS BAR DOES NOT MEASURE 1" THEN DRAWING IS NOT TO SCALE

I-94 REST AREA CORRIDOR STUDY
MONTANA
HATHAWAY REST AREA
WEST BOUND SITE IMPROVEMENTS

PRELIMINARY
NOT FOR CONSTRUCTION

DOWL HKM
 7 WEST 6TH AVE., SUITE 3W
 P.O. BOX 1009
 HELENA, MT 59624
 406-443-3710
 406-443-3717 (FAX)
 DOWLHKM.COM

Sheet No. 2
C-2
 of 2

