



April 1, 2025

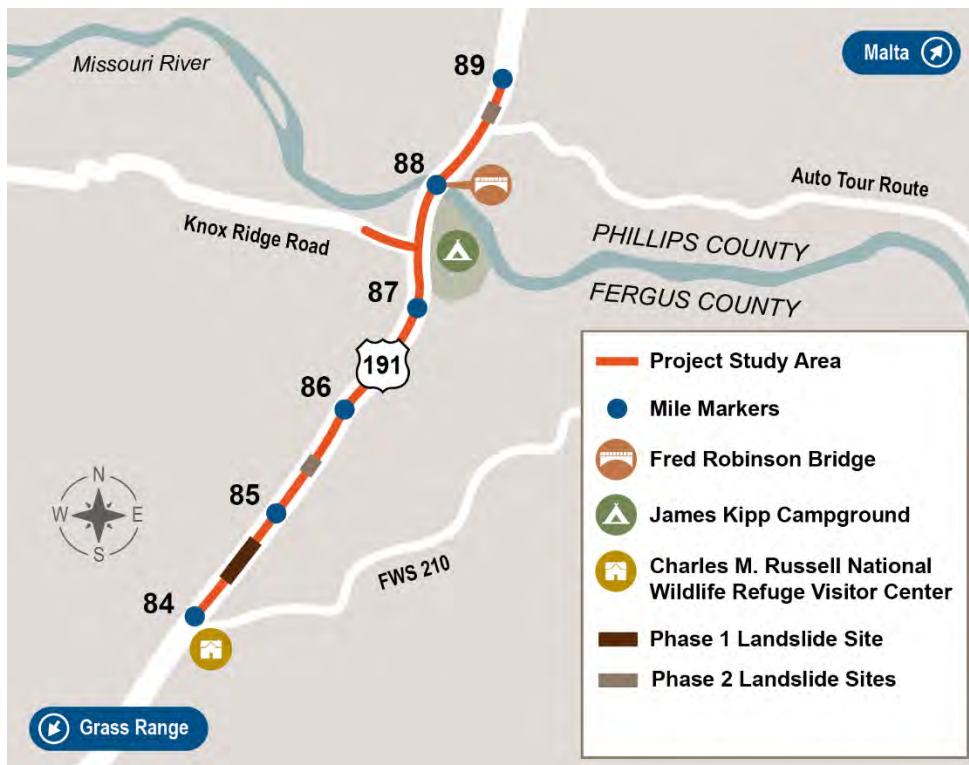
FOR IMMEDIATE RELEASE

Lisa Olmsted, Public Involvement Manager, 406-869-6329, lolmsted@dowl.com

Project site preparation begins on US 191 – Mobridge Slide Repairs

FERGUS COUNTY, Mont: The Montana Department of Transportation (MDT) and its partner M.A. DeAtley Construction, Inc., have begun the preliminary site work, dirt work, and staging on the *US 191 – Mobridge Slide Repairs* project. This includes arranging and organizing the materials, equipment, and recourses needed for the project. The initial site work is expected to be completed in the coming months; full construction activities are expected to begin immediately after. Minimal traffic disruption is anticipated during the preliminary site work as much of the work will be off-site and not seen from the road.

This project will reconstruct and stabilize areas impacted by three landslides on US Highway 191 (US 191), near the James Kipp Recreation Area and the Fred Robinson Bridge over the Missouri River.



The project area includes three different locations along the US 191 corridor which will be completed in two phases. The first phase will include work at Site A (see map above), which is the largest of the three areas and impacts the section of road between mile markers 84 and 85. Construction is anticipated to continue into 2026.



Phase 1 project improvements will include:

- Reconstruct embankments to mitigate landslide movements. This involves adding a toe berm and shear key at the base of the former landslide.
- Improve drainage
- Improve the grading of the roadway
- Construct a new roadway surface
- Upgrade safety features such as new guardrail, signage, and pavement markings

Phase 2 of construction will involve work on additional landslide locations between mile markers 85 and 86 (Site B), north of the Mobridge Slide and near mile marker 89 (Site C), just north of the Missouri River. Phase 2 construction is anticipated to begin in 2027, depending on completion of design and availability of funding.

More information about the project and instructions on how to sign up for project updates can be found at the project website: <https://www.mdt.mt.gov/pubinvolve/mobridge>.

Comments, questions, or concerns can be directed to us191@dowl.com or by calling Lisa Olmsted at 406-970-7591.

###

MDT is a workforce of over 2,000 people across Montana determined to do all we can so that you arrive at your destination safely. Our mission is to build, operate, and maintain a safe and resilient transportation system. For more information, visit <https://www.mdt.mt.gov/>.

Anyone needing an alternative format of this document should contact MDT's ADA Coordinator at mmaze@mt.gov, 406-444-5416 or Montana Relay Service at 711.