

# MT 37 BRIDGE PRESERVATION PROJECT

# Welcome



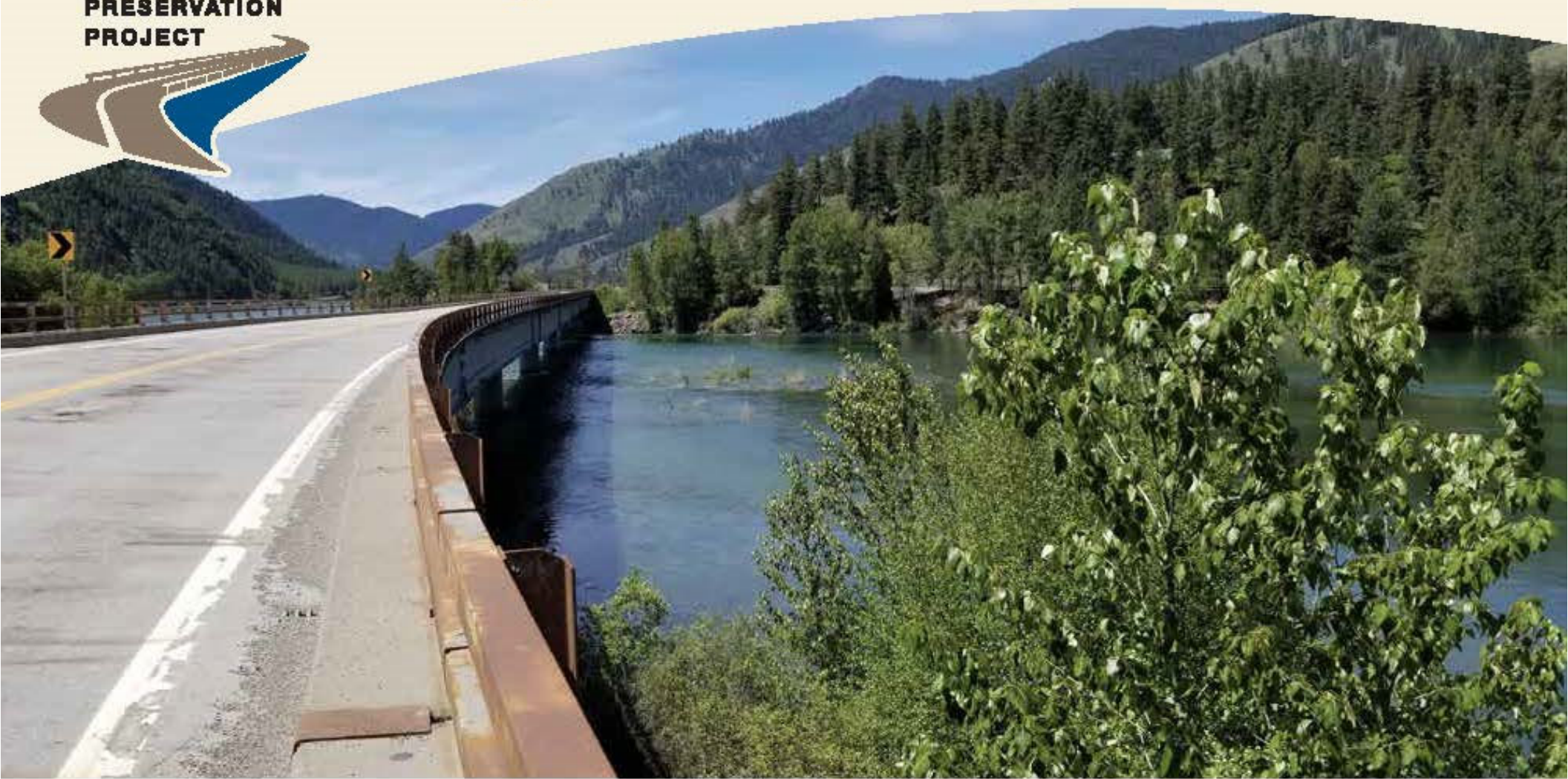
**MONTANA**  
Department of  
Transportation

**Thank you for joining the Montana Department of Transportation for the MT 37 Bridge Preservation Project open house. The purpose of today's meeting is to:**

- Provide an overview of the project and present the final design plans.
- Discuss the anticipated construction traffic controls, work sequencing and schedule.
- Answer questions.

**MT 37  
BRIDGE  
PRESERVATION  
PROJECT**

# Project Team



**FORSGREN**  
*Associates Inc*

**RBCI**



# Bridge Management and Design Process

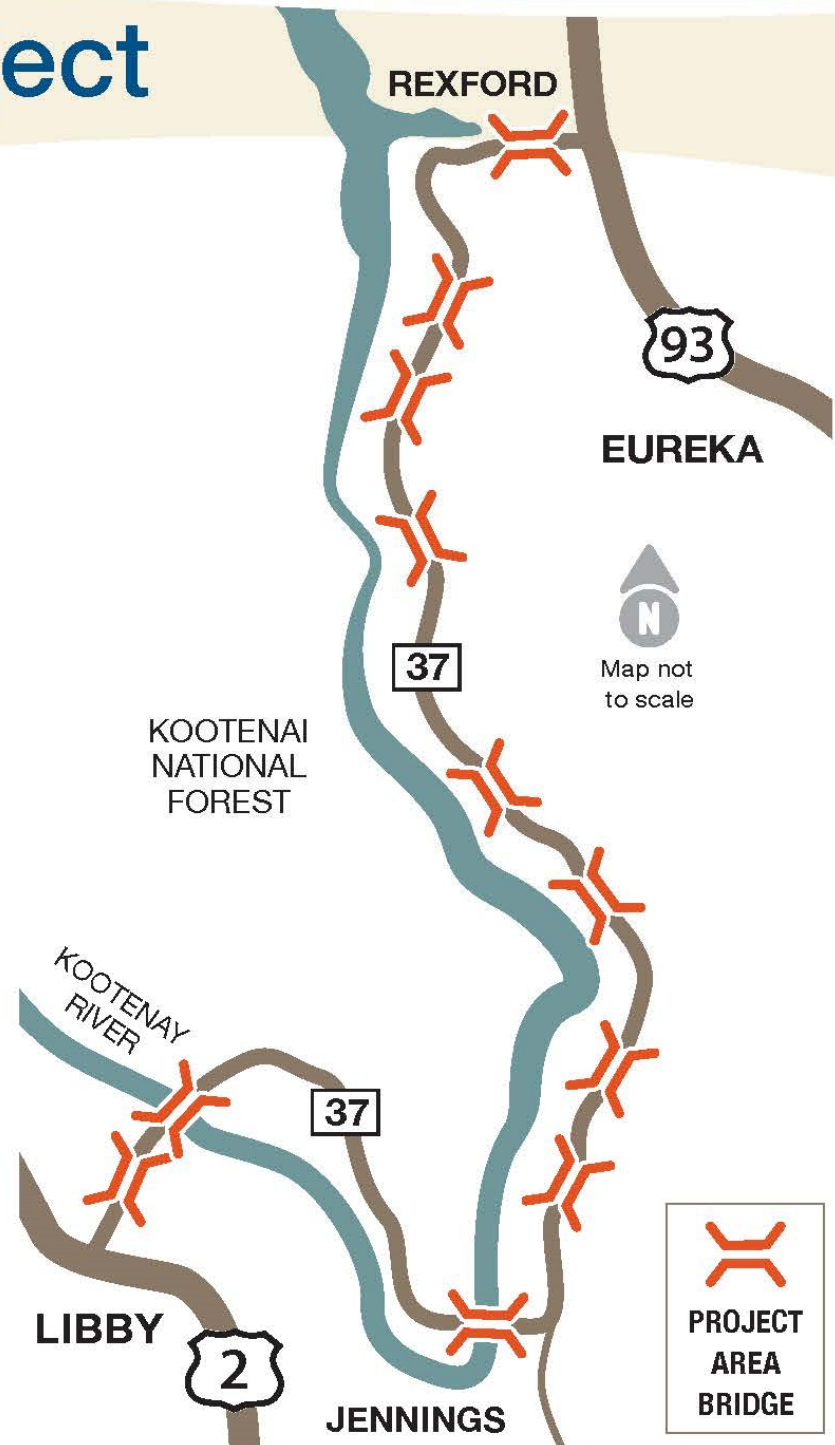
The MDT Bridge Bureau is tasked with keeping Montana's bridges safe, resilient, economical, and reliable. The Bridge Bureau has two sections: Bridge Management and Bridge Design.

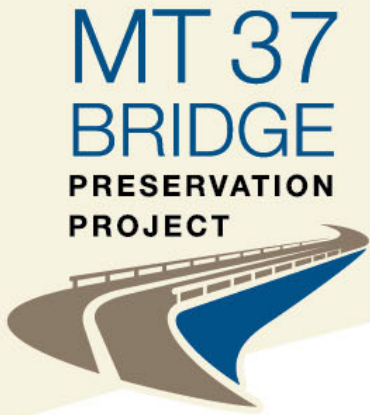


# MT 37 BRIDGE PRESERVATION PROJECT

## About the Project

MDT is in the final stages of designing improvements for 11 bridges on Montana Highway 37 (MT 37) between Libby and Eureka. The bridges are aging and in need of repairs and routine upkeep. Most of the bridges were built between 1959 and 1974.





# Process and Anticipated Schedule

## 2020 PHASE 1 – BRIDGE EVALUATION

---

Evaluate the bridges

---

Determine repair or rehabilitation needs

---

Present recommended repairs to the public

---

Develop Final Review Report

## 2021 – 2023 PHASE 2 – BRIDGE DESIGN

---

Develop design plans

**Present design plans to the public**

Finalize design plans

*We are here.*

**CONSTRUCTION COULD BEGIN AS EARLY AS 2025**

*Contingent on the availability of funding.*



# Environmental Considerations

## **MDT Projects require preparation of an Environmental Study under**

- National Environmental Policy Act (NEPA)
- Montana Environmental Policy Act (MEPA)

## **MT 37 Project Environmental Study Evaluated**

- Endangered Species Act Compliance
- Migratory Bird Treaty Act Compliance
- Protection of Aquatic Resources
- Bald and Golden Eagle Protection
- Presence of Hazardous Materials
  - Lead-Based Paint
  - Asbestos
  - Work within Libby Superfund Site



# Evaluation of the Bridges

## Work included:

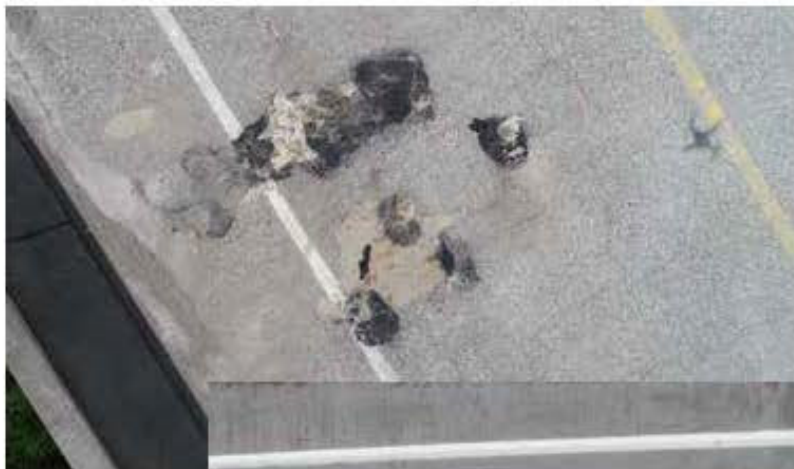
- Evaluating the current condition of the bridge decks (driving surface).
- Verifying past inspection reports.
- Gathering input from local maintenance staff on individual bridge issues.
- Determining the most cost-effective repairs to each bridge.
- Developing plans to rehabilitate the bridges.
- Presenting recommended repairs to the public.



# MT 37 BRIDGE PRESERVATION PROJECT

## Improvements – Patch and Overlay

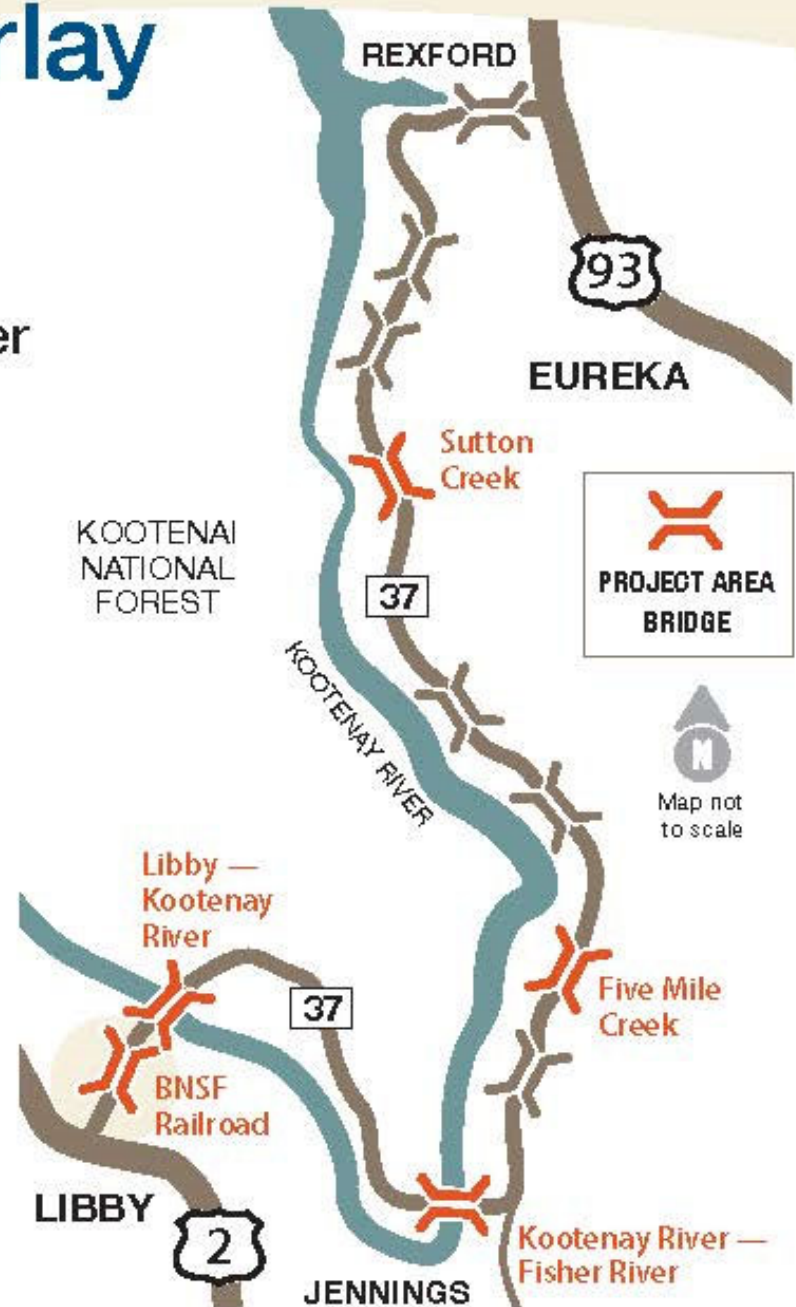
- BNSF Railroad
- Libby – Kootenay River
- Kootenay River – Fisher River
- Five Mile Creek
- Sutton Creek



Five Mile



Kootenay River





# MT 37 BRIDGE PRESERVATION PROJECT

## Improvements – Deck Replacement

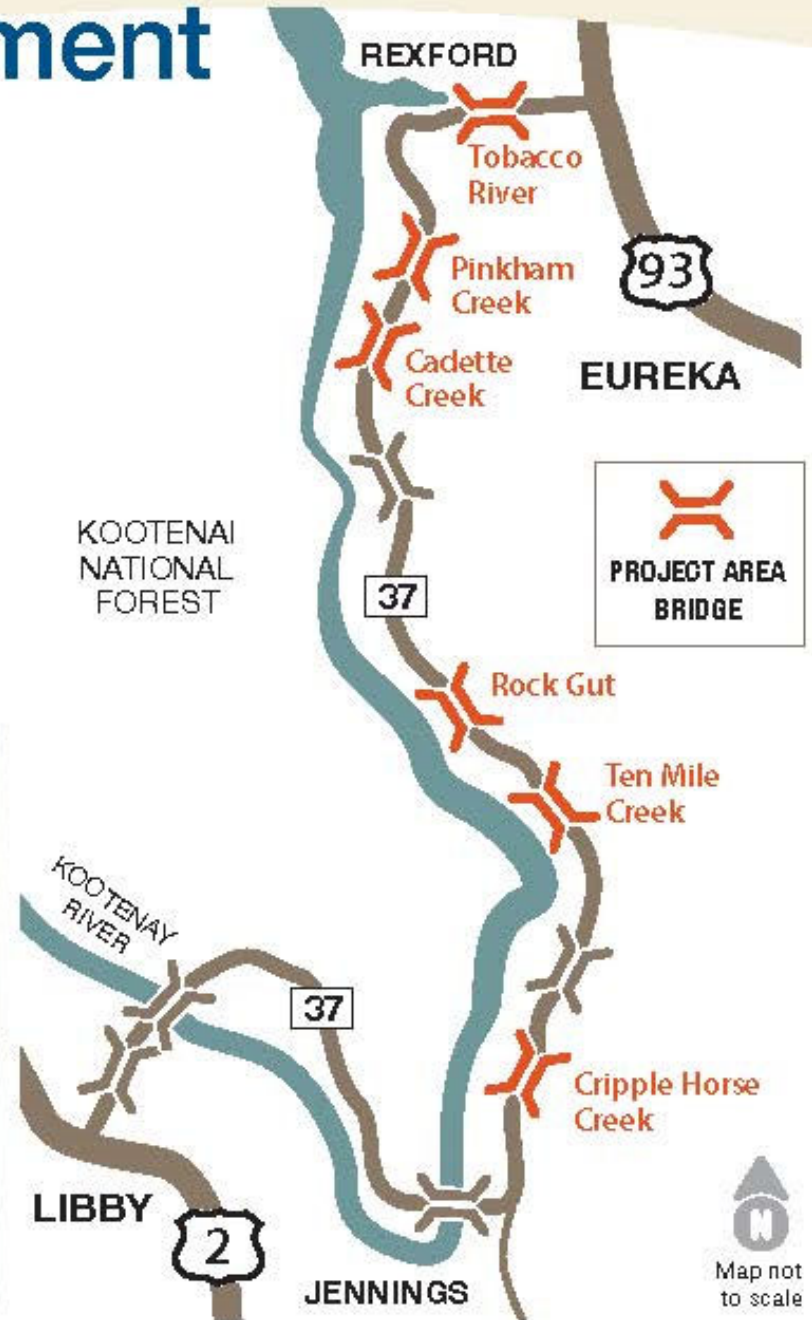
- Cripple Horse Creek
- Ten Mile Creek
- Rock Gut
- Cadette Creek
- Pinkham Creek
- Tobacco River



Tobacco River



Pinkham Creek

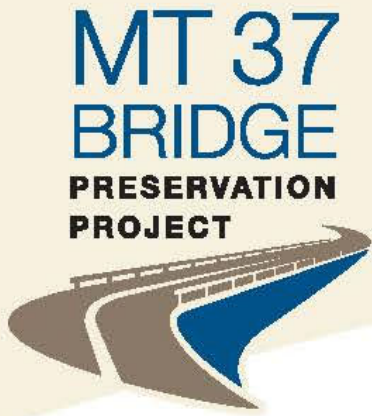




# What to Expect During Construction

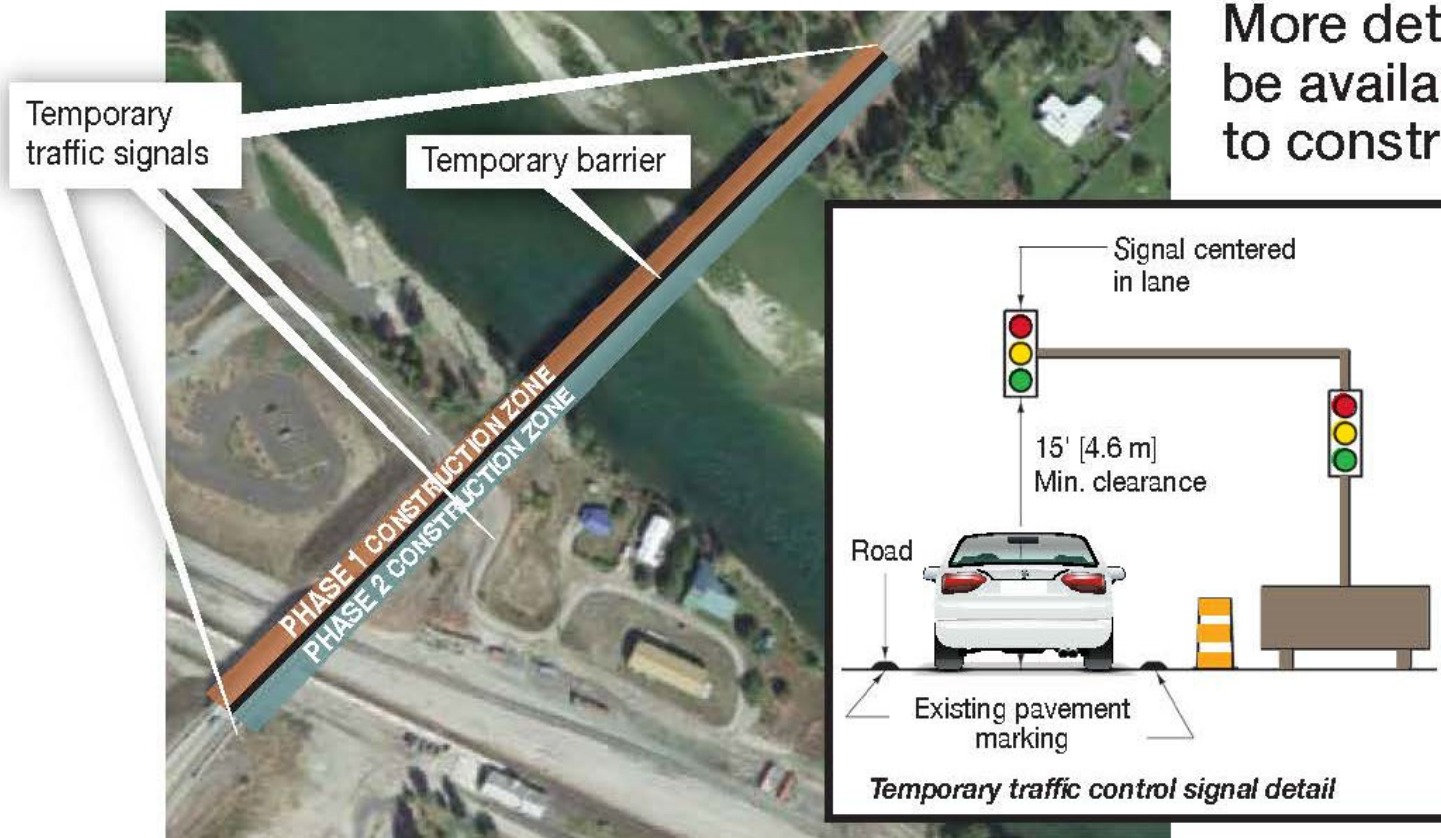
- Single-lane traffic over bridges.
- Traffic-sensing smart signals will control traffic.
- Reduced speeds.
- Delays of up to 15 minutes.
- No bridge closures are anticipated.
- Width restrictions.





# Anticipated Traffic Control – Two Libby Bridges

MDT anticipates working on the bridges in Libby at California Avenue over the BNSF rail line and the Kootenay River at the same time to reduce impacts to traffic. Access to Riverfront Park and Thomas Street will be open throughout construction.

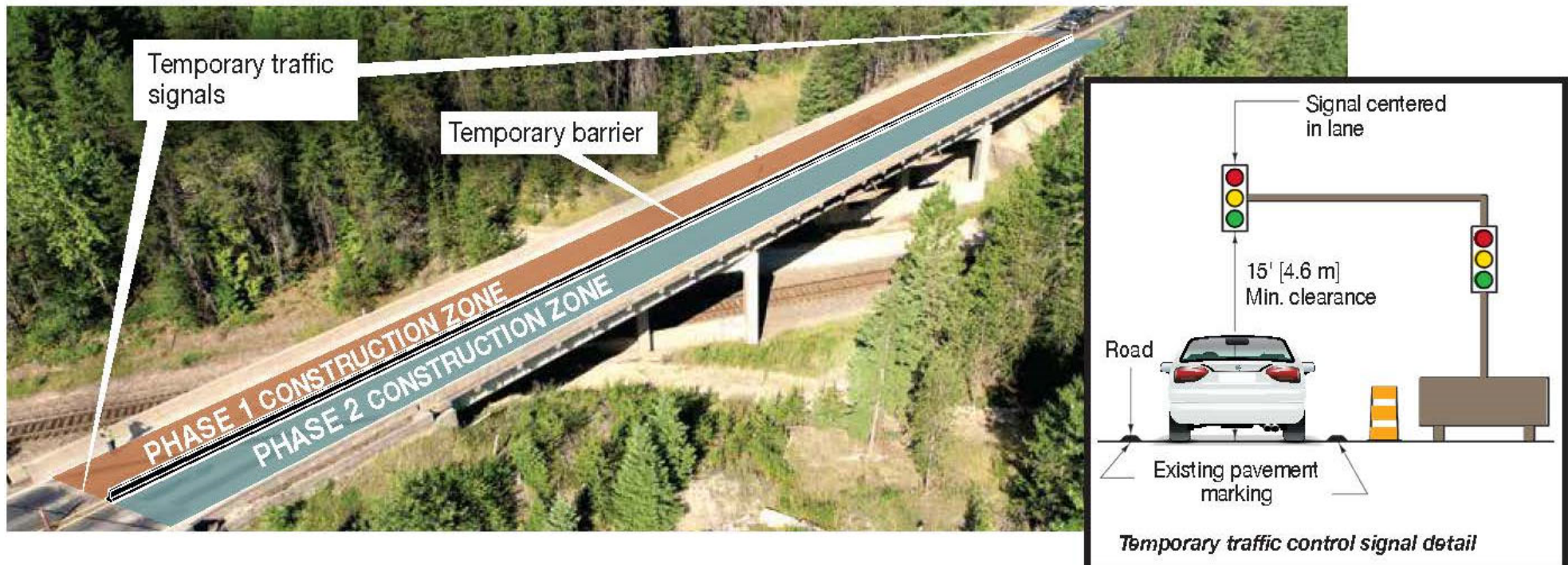


More details will be available prior to construction.

# Anticipated Traffic Control – Nine Bridges North of Libby

Motorists can expect one-lane traffic on the bridges. Because repairs will be limited to the immediate vicinity of the bridges (typically a few hundred feet), the one-lane of traffic will be short, and delays will likely be 5 – 10 minutes. MDT does not anticipate full bridge closures during construction.

More details will be available prior to construction.

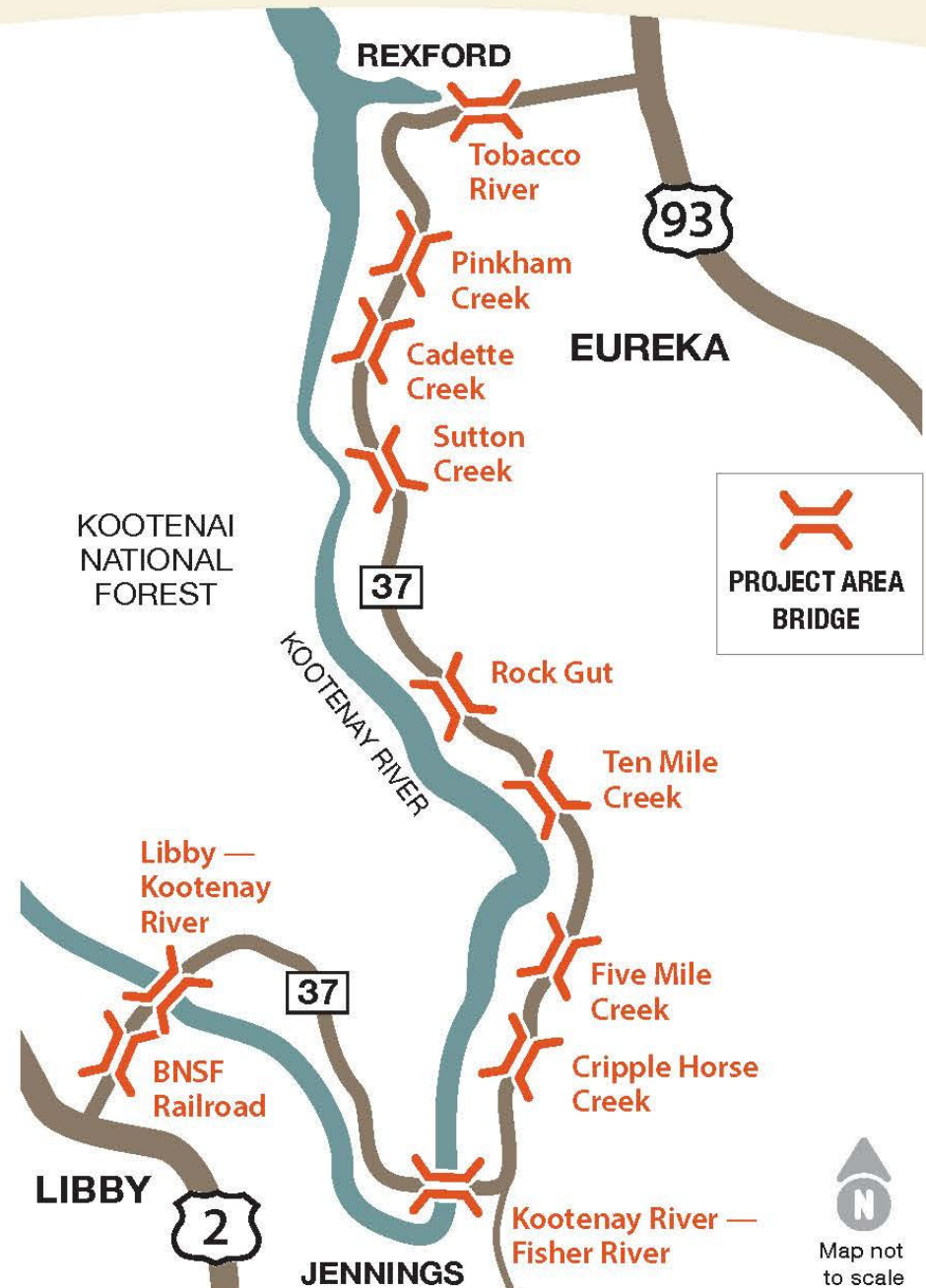


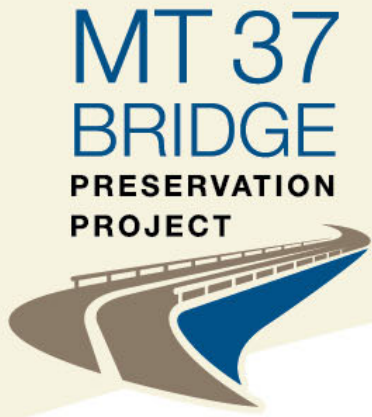
# MT 37 BRIDGE PRESERVATION PROJECT



## Construction Phasing

To help reduce delays, MDT may choose to complete the bridge repairs over multiple construction seasons. This will limit the number of bridges under construction at a given time.





# Next Steps

## 2023 – BRIDGE DESIGN

---

Finalize design plans

---

Projects released for contractor bidding

## 2025 – TBD – CONSTRUCTION PHASE

---

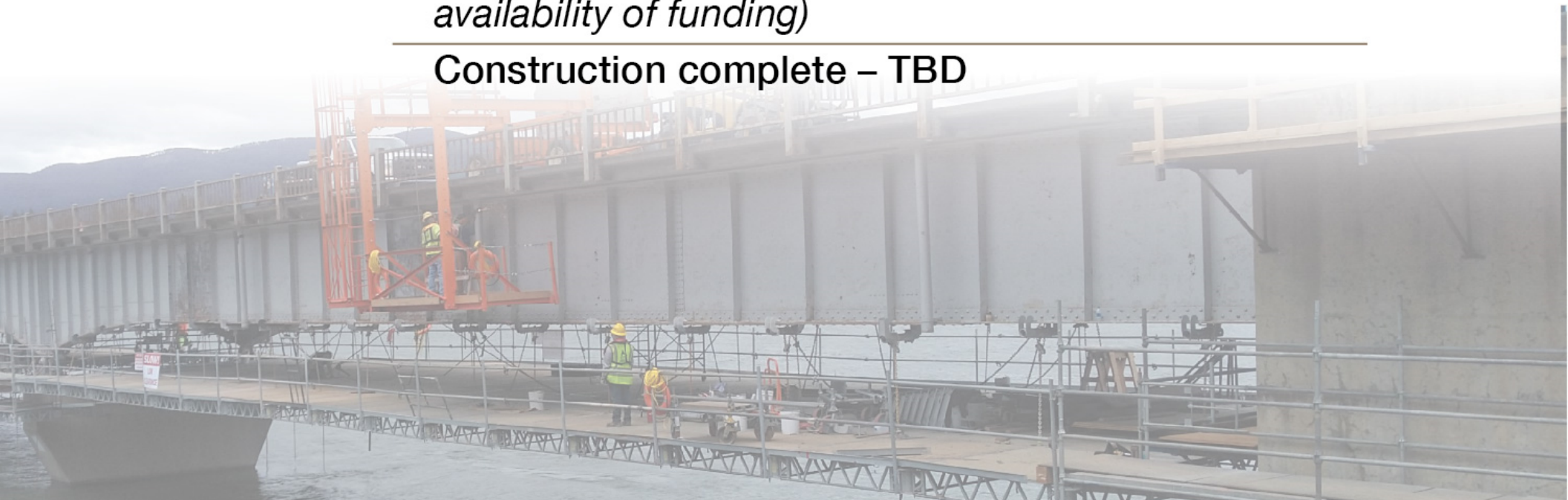
Construction plans presented to the public – 2025

---

Construction begins – 2025 *(dependent on availability of funding)*

---

Construction complete – TBD





# Public Outreach During Construction

MDT will maintain open communication with the public during construction. The public will be able to sign up to receive updates via text message or email during construction. The email and text sign-up information and construction updates will be posted on the project website once construction begins.

For the very latest information on the status of construction and other road conditions around Montana, visit: [511MT.NET](http://511MT.NET)





# Thank You

## Thank You for participating

Communication with the public during the development and construction of these improvements is important to the success of the project.

## Stay Informed

Visit the project website at:  
[mdt.mt.gov/pubinvolve/mt37bridges](http://mdt.mt.gov/pubinvolve/mt37bridges)

## Contact

### Brandon Coates

Public Involvement Manager

EMAIL [Brandon@rbc.net](mailto:Brandon@rbc.net)

PHONE 406-465-3350

