



this issue

what is a Pre-NEPA corridor study

public involvement opportunities

contact us

study area boundary

corridor study schedule

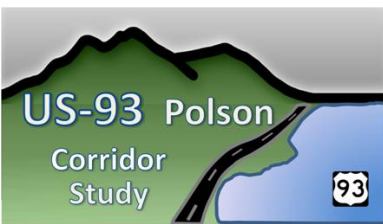
A Pre-NEPA Corridor Study is:

- NOT a NEPA Study or Environmental Study
- NOT a Preliminary or Final Design Project
- NOT a Construction or Maintenance Project
- NOT a Right-of-Way Acquisition Project

What is a Pre-NEPA Corridor Study?

The Montana Department of Transportation (MDT), in partnership with the Confederated Salish and Kootenai Tribes (CSKT), Lake County, and the City of Polson, has initiated the development of the US 93 Polson Corridor Study. The US 93 Polson Corridor Study will determine cost-effective ways to address transportation needs along US 93 through Polson, and also examine the feasibility of a US 93 alternate route through Polson.

The US 93 Polson Corridor Study is an important process that will enhance the linkage between planning and NEPA/MEPA. The overriding goal for the study is to analyze existing data to determine current and future deficiencies and needs within the corridor, and identify potential environmental issues and mitigation opportunities if projects are identified to move forward. The corridor study will examine the feasibility of a US 93 alternate route thru Polson.



The MDT has established the Corridor Planning Process in order to link the current transportation planning processes and the National Environmental Policy Act (NEPA)/ Montana Environmental Policy Act (MEPA), as provided for in the *Safe, Accountable, Flexible, Efficient Transportation Equity Act: A Legacy for Users (SAFETEA-LU)*. The Pre-NEPA corridor planning process may identify improvement options that could possibly be advanced into NEPA/MEPA once funding becomes available. This process provides opportunity for partner and public involvement at all stages.

Special Note....

The US 93 Evaro to Polson *Record of Decision (ROD)* encourages the FHWA, MDT, CSKT, Lake County, and the city of Polson to continue to work together to determine the appropriate improvement project(s) applicable for US 93 through Polson. This US 93 Corridor Study reflects the study partners' commitment to improving transportation conditions in the Polson community.

Public Meeting #1

September 9, 2010
Polson City Library
2 1st Ave. East, Polson

Open House: 4pm-6pm
Presentation: 6:30pm

The public is encouraged and welcome to attend. We hope to see you there.

contact us

Sheila Ludlow

MDT

406.444.9193

Sludlow@mt.gov

Joe Hovenkotter

CSKT

406.542.1300

Jhovenkotter@cskt.org

Bill Barron

Lake County

406.883.7204

[LakeCommissioners@](mailto:LakeCommissioners@lakemt.gov)

lakemt.gov

Todd Crossett

City of Polson

406.249.5637

[PolsonManager@](mailto:PolsonManager@centurytel.net)

centurytel.net

Jeff Key, P.E.

CDM

406.441.1400

KEYJA@cdm.com



Public Involvement Opportunities

Public involvement is important to any successful corridor study process. The purpose of public involvement is to ensure a proactive process that provides opportunities for the public to be involved in all phases of the corridor study process. The general public is invited to participate in the process through public meetings and ongoing study information review and input.

A study website has been developed to provide on-line opportunities to comment on the needs of the US 93 Polson corridor and later on the draft study recommendations. Dates, times, and locations for all public outreach events will be announced prior to the

to the events through local media and the study mailing list.

The study team will collect and consider all public comments received to better understand the public view of potential issues. Those with a specific interest in the study are encouraged to join the **study mailing list**. They can do so by submitting their name and contact information to Jeff Key at KeyJA@cdm.com

Three public meetings will be held over the course of the study. The first public meeting is scheduled for Thursday, September 9, 2010 at the Polson City Library. There will be an open house from 4:00

to 6:00 PM, and a formal presentation starting at 6:30 PM. The public is welcome and encouraged to attend.

Check the local media and study website periodically for information relating to the time and location of future public meetings and other public outreach events.



Check out the study website at:

www.mdt.mt.gov/pubinvolve/polsoncorridorstudy



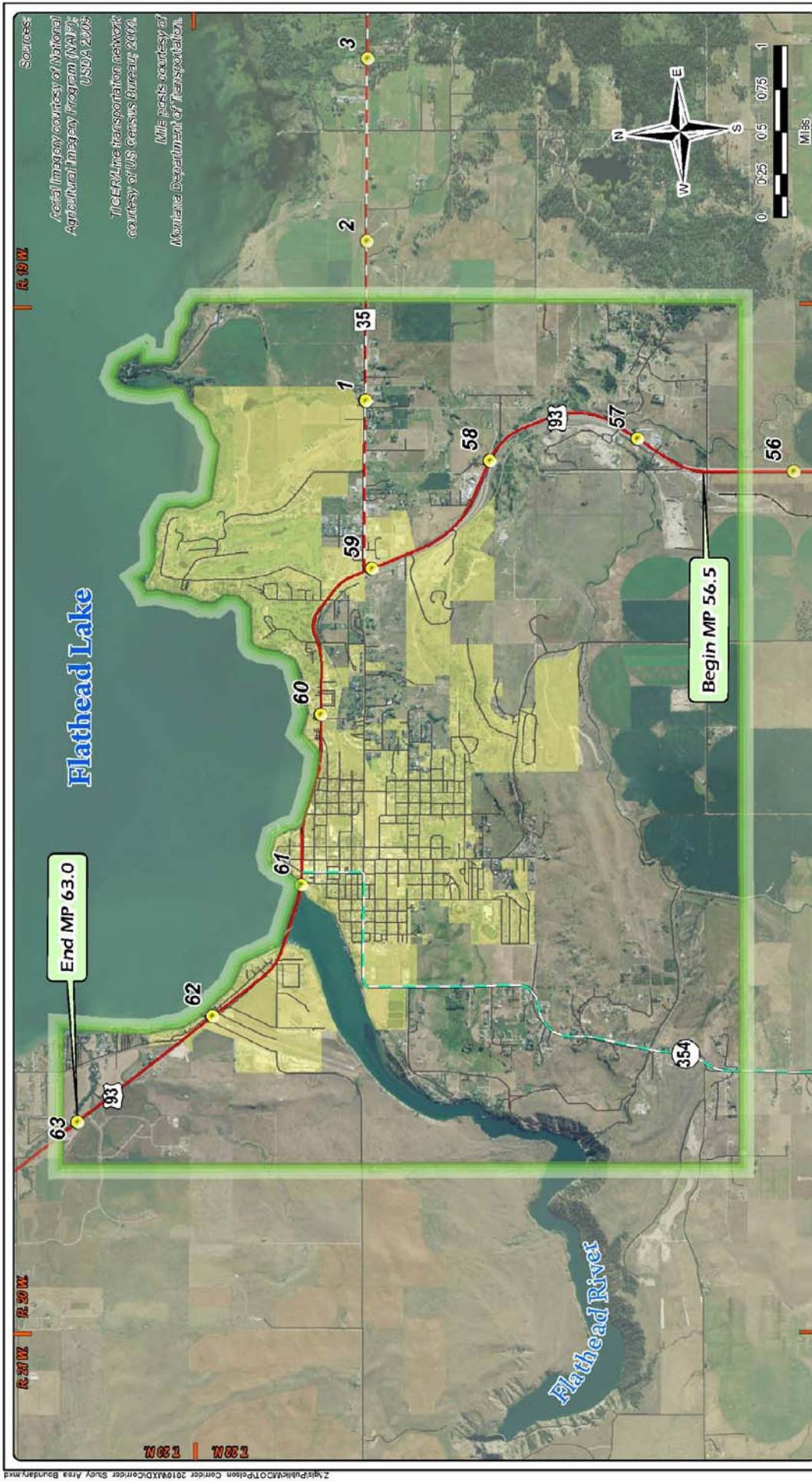


Figure 1
Corridor Study Boundary
US 93 Polson Corridor Study

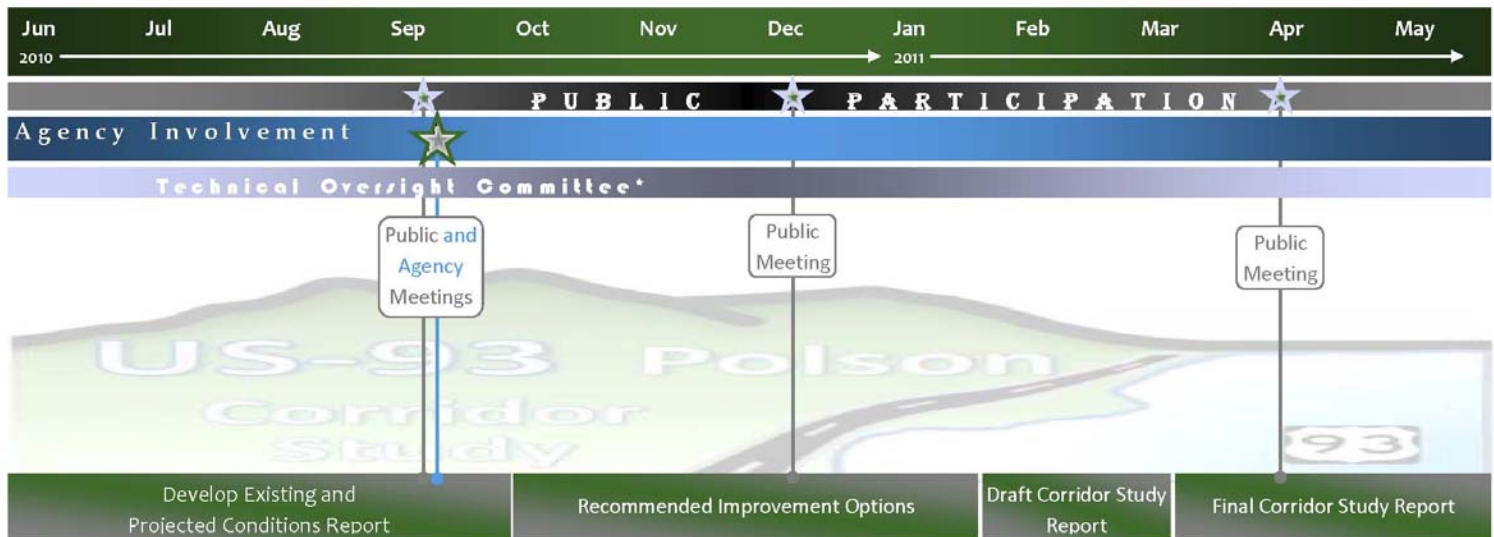
Corridor Study Schedule

The US 93 Corridor Study will be developed over a twelve-month period. The schedule strives for a final document and study completion near June 15, 2011. The consultant has already begun the process of collecting data and information on existing corridor conditions.



US 93 Polson Corridor Study Schedule

Note: Task durations and public involvement dates are approximated.



* The Technical Oversight Committee is scheduled to meet on a monthly basis until study completion.

The MDT, CSKT, Lake County, City of Polson, and CDM attempt to provide accommodations for any known disability that may interfere with a person participating in any service, program, or activity associated with this study. Alternative accessible formats of this information will be provided upon request.

For further information, call (406) 441-1400 or TTY (800) 335-7592 or by calling Montana Relay at 711.

Accommodations must be made at least 48 hours prior to the scheduled activity and/or meeting.

Work Completed To Date...

- ❖ Public Participation Plan
- ❖ Study Website
- ❖ Newsletter #1
- ❖ Press Release
- ❖ Public Meeting Advertisement

These documents may be accessed on the study website:
www.mdt.mt.gov/pubinvolve/polsoncorridorstudy