



River Drive Corridor Study

15th Street North to 38th Street North

Informational Meeting #2
August 03, 2016

Welcome and Introductions



Title VI Considerations

This meeting is held pursuant to Title VI of the 1964 Civil Rights Act which ensures that no person shall be excluded from participation in, denied the benefits of, or otherwise be subjected to discrimination on the basis of a protected status during any MDT project.



Presentation

- What is a Corridor Study?
- Areas of Concern
 - Transportation System
 - Environmental Considerations
- Needs and Objectives
- Recommended Improvement Options
- Next Steps

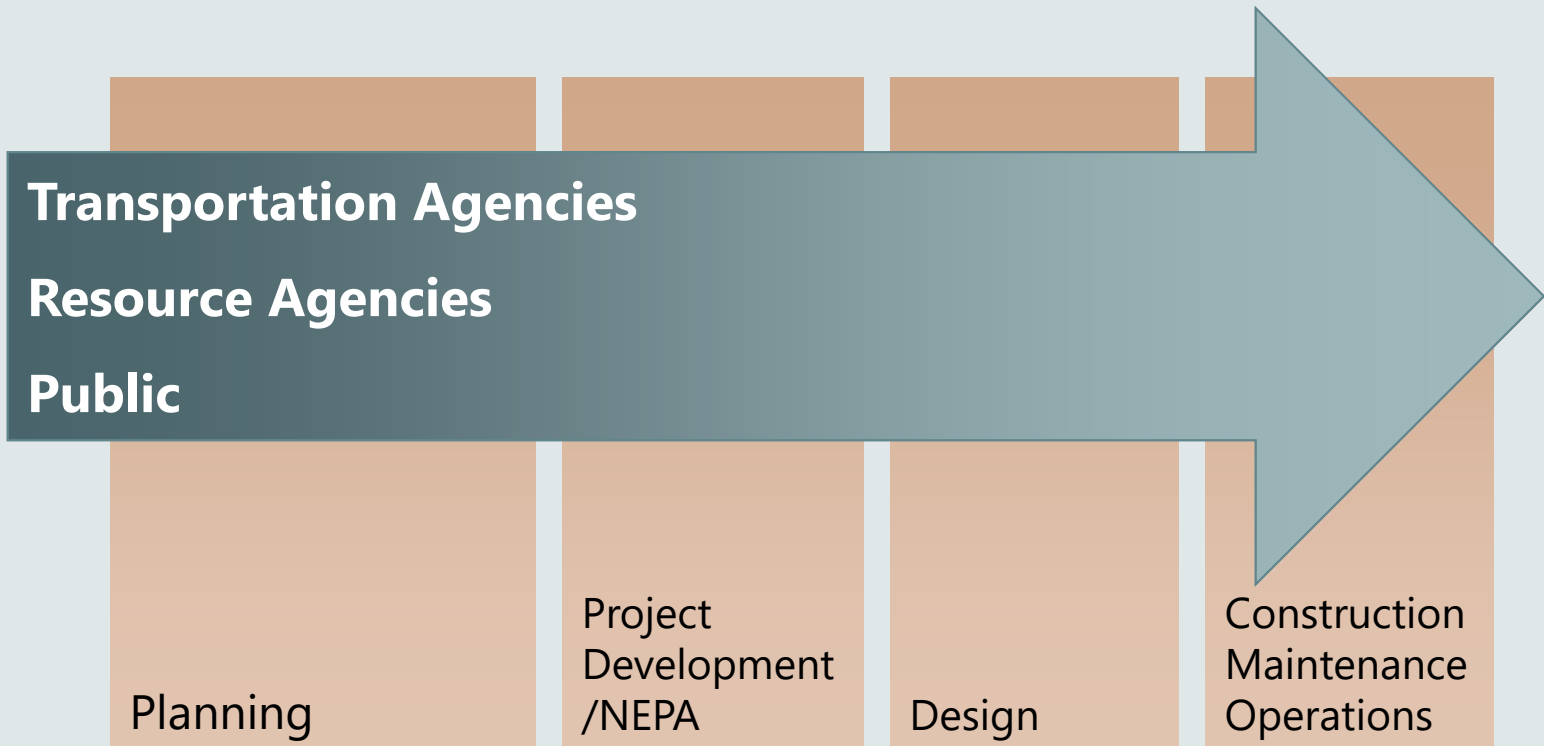
Discussion Period



A landscape photograph showing a road on the left, a body of water on the right, and a city skyline in the distance. A large, semi-transparent brown circle is overlaid in the center, containing the text "What is a Corridor Study?".

What is a Corridor Study?

What is a Corridor Study?

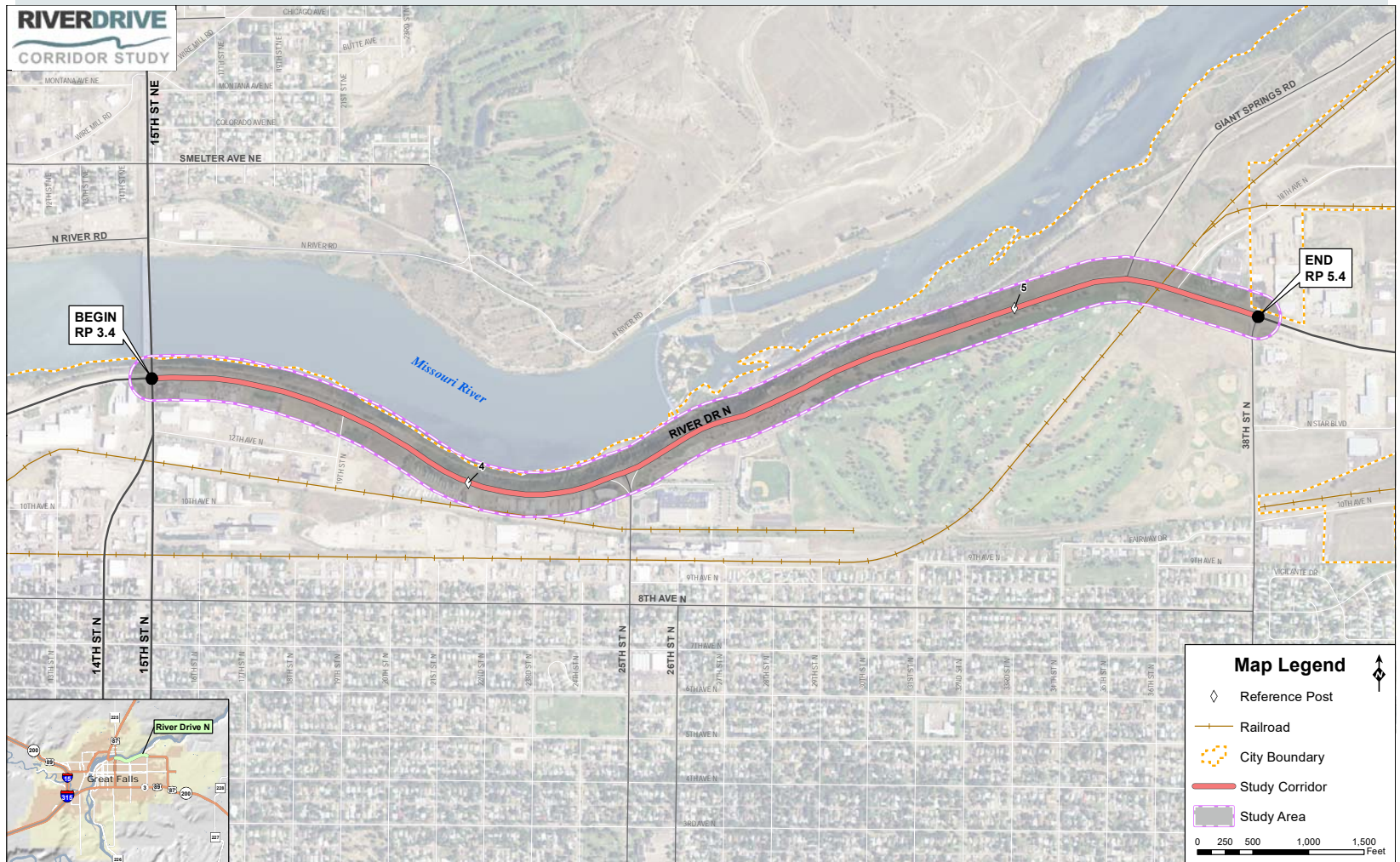


A corridor study is conducted before design, right-of-way acquisition, environmental compliance, and construction.

River Drive North (2 miles)

- 15th Street North (RP 3.4)
- 38th Street North (RP 5.4)

Study Area



Past Planning

- Past LRTPs
- Feasibility Study completed in 2009
- 2014 LRTP
 - Conduct a Corridor Study

Existing Concerns

- Congestion
- Intersections
- Safety

Future Concerns

- Growth
- Development

River Drive North Feasibility Study



Prepared By: George Mason University
Transportation Policy, Operations and Logistics (TPOL)

Great Falls Area Long Range Transportation Plan - 2014

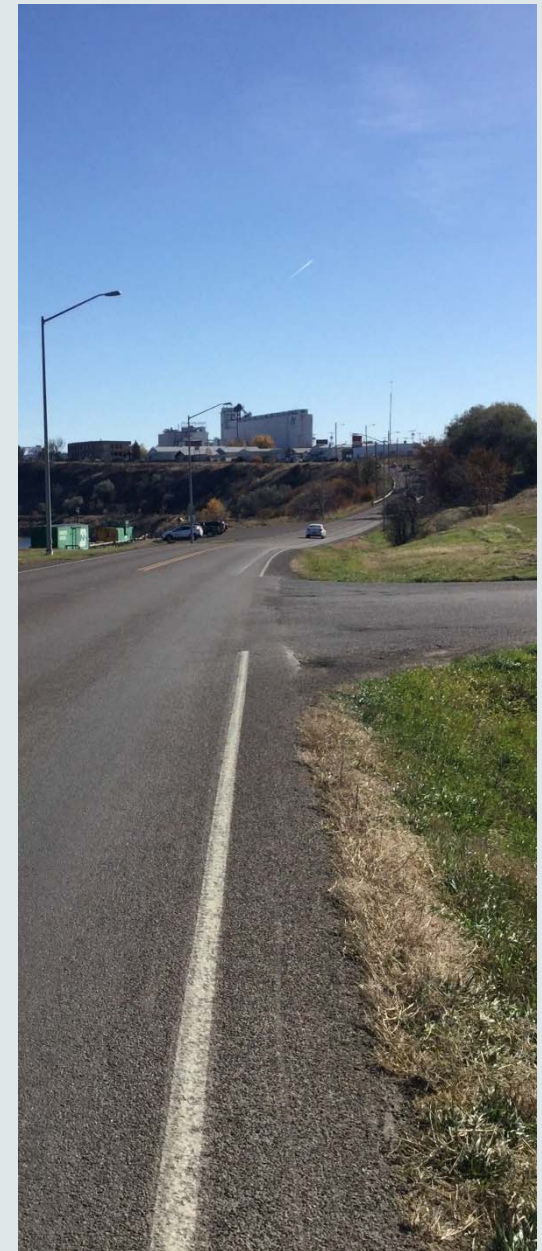
Great Falls Metropolitan Planning Organization (MPO)
Great Falls, Montana



March 17, 2014

Goals and Purpose of Study

- Identify needs and objectives
- Identify potential impacts and constraints
- Identify short- and long-range improvements
- Develop planning level cost estimates
- Develop information and data to be forwarded into the environmental process if a project moves forward from the study (dependent on available funds)





Areas of Concern

Principal arterial roadway

- National Highway System
- Designated truck route

Part of US Hwy 87 Bypass

- Connects 10th Ave S to 15th St N

Existing constraints

- Missouri River
- River's Edge Trail
- Park and recreational land
- Development

Two travel lanes

- Generally 4' shoulders
- Fair pavement condition

35 to 45 mph speed limit



Looking West Near Trailhead



Businesses between 15th St N and 19th St N

- 7 approaches

Caboose Trailhead

Big Stack Mobile Home Court approach

- On a hill
- Difficult to see

Business access west of 25th St N

- Businesses closely front roadway
- No defined parking or access

Scenic pull-outs



Rail

- At-grade crossing
- New development

Freight

- Designated truck route
- 7.2% heavy vehicle traffic



River's Edge Trail

- North side of roadway
 - *Between 15th St N and Giant Springs Rd*
- Shared use path

19th St N crossing

- Trail spur terminates at 19th St N intersection
- No crossing treatments

Caboose Trailhead

- Parking area and access for River's Edge Trail

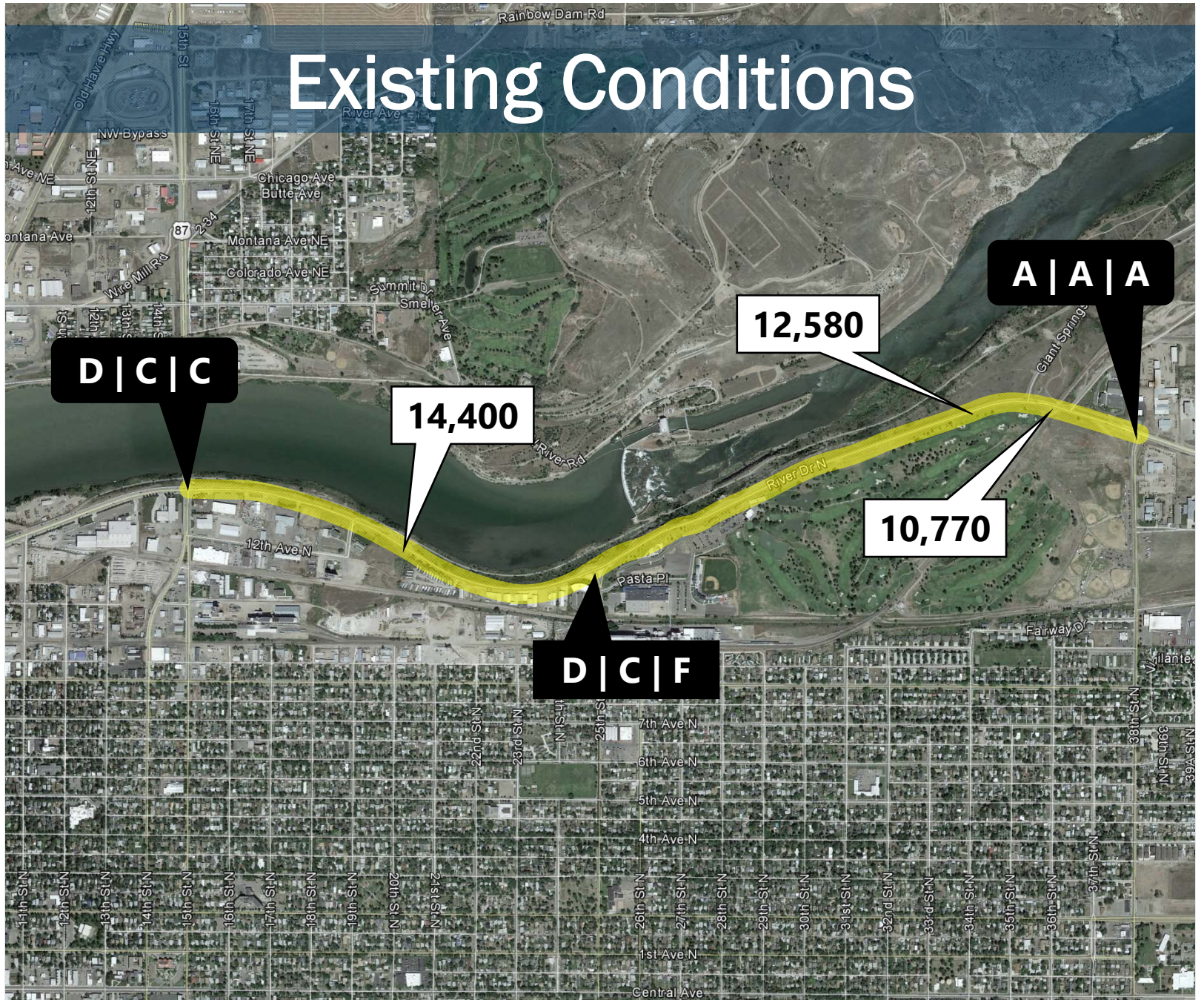
East of Giant Springs Road

- Shared use path
- Connects River's Edge Trail to 38th St N



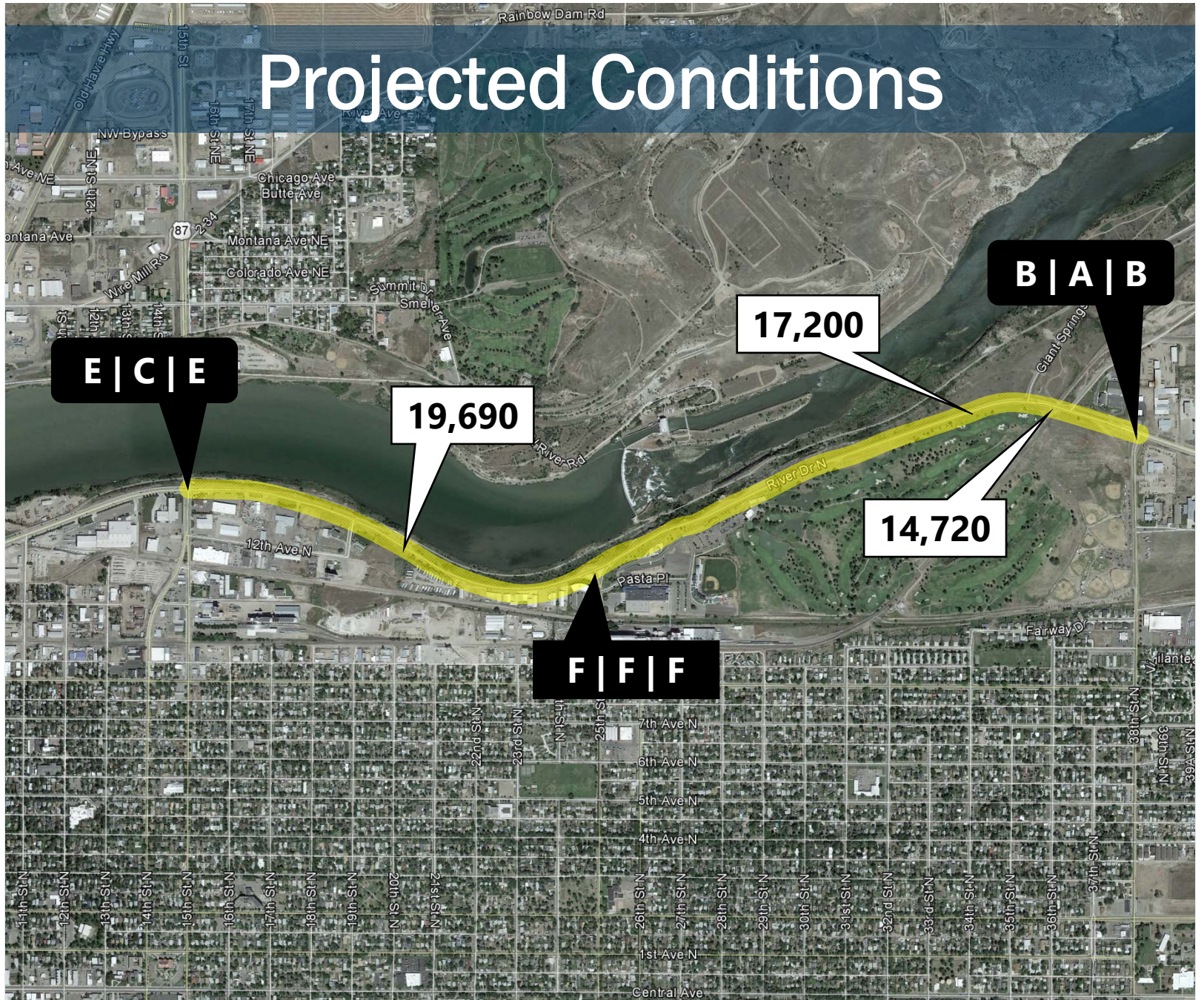
Traffic Operations

River Drive Corridor Study
Slide: 16



Traffic Operations

River Drive Corridor Study
Slide: 17

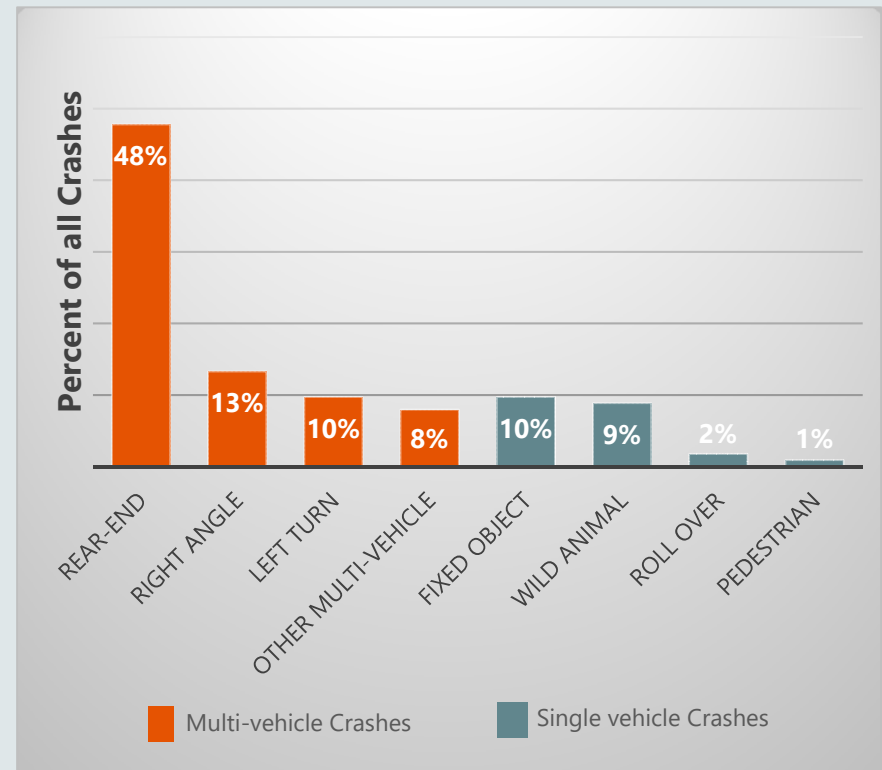


5 years of data*

- No fatal
- Two incapacitating injury
- Six non-incapacitating injury

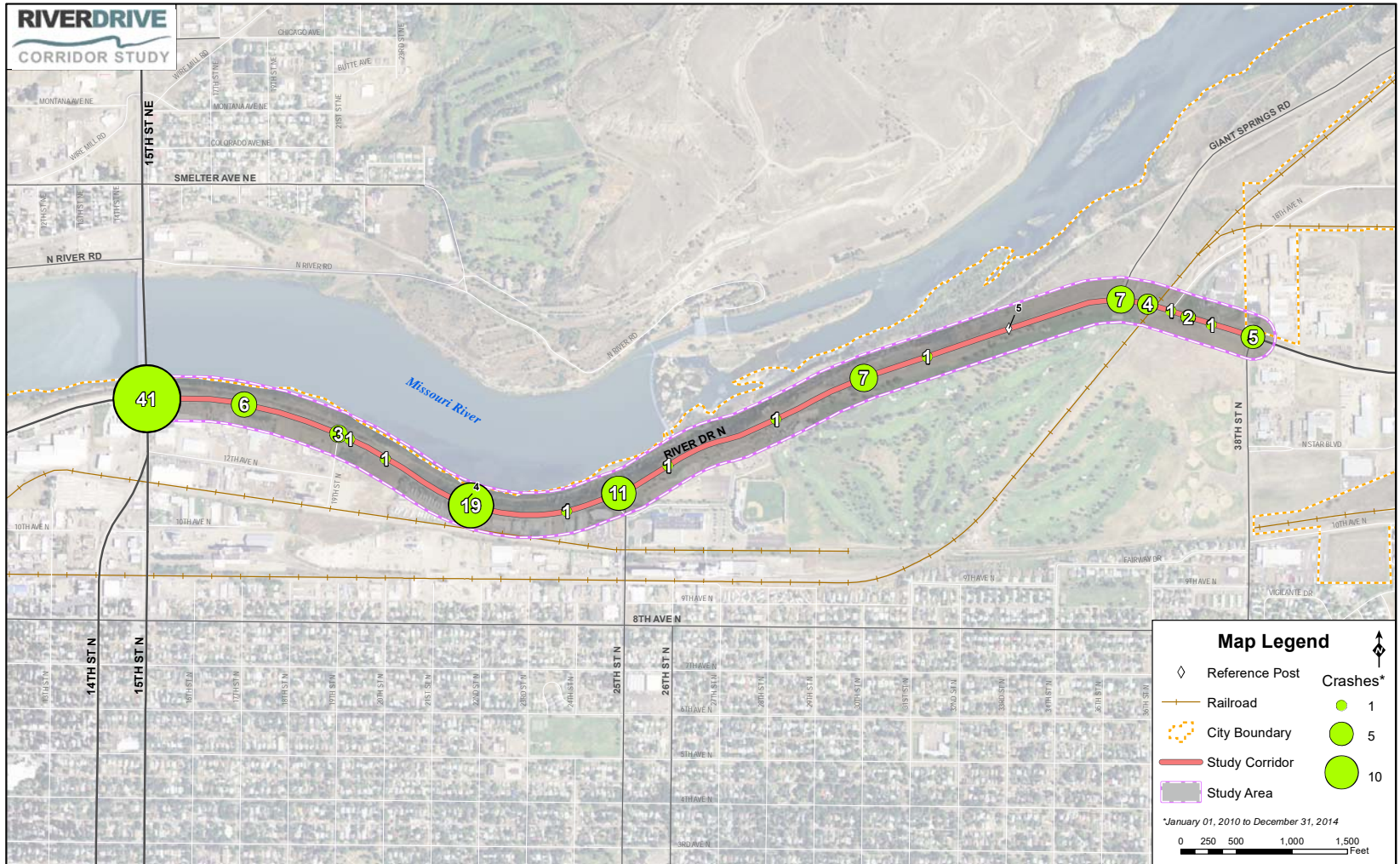
113 total reported crashes

- 79% multi-vehicle
- 48% rear-end
- No environmental trends noted



Crash Type Statistics

Safety



Noted clusters:

- 15th Street North
- Big Stack Mobile Home Court

- 25th Street North
- Scenic Pull-out
- Giant Springs Rd

Physical Environment

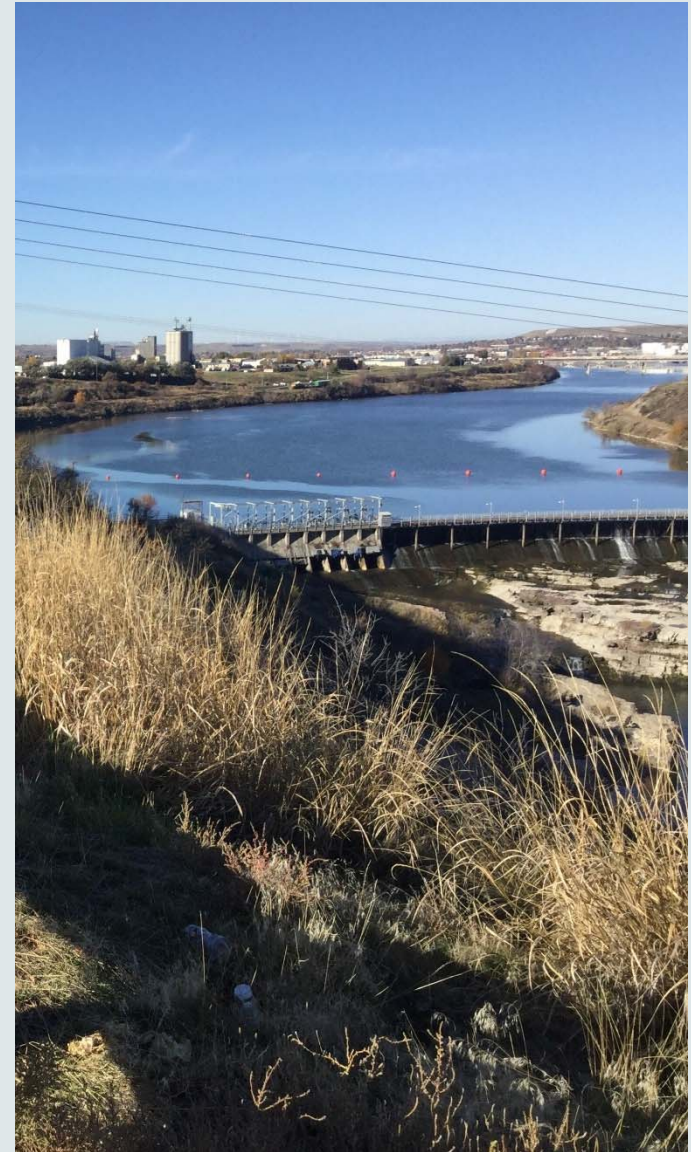
- Soil Resources and Prime Farmland
- Geologic Resources
- **Water Resources**
- Air Quality
- Hazardous Substances

Biological Environment

- Vegetation
- **General Wildlife**
- **Threatened and Endangered Species**
- Species of Concern

Social and Cultural Environment

- **Population Demographics and Economics**
- **Land Ownership**
- **Recreational Resources**
- **Cultural Resources**
- Noise
- **Visual Resources**



A landscape photograph showing a paved road on the left, a metal guardrail in the foreground, and a body of water on the right. In the background, there are trees with autumn foliage, utility poles, and industrial buildings under a clear blue sky. A large, semi-transparent brown circle is centered over the image, containing the text "Needs and Objectives" in white. The image is split vertically by a thin white line.

Needs and Objectives

Need 1: Improve the Safety of the Corridor

Objectives (To the Extent Practicable)

- Reduce the frequency and severity of crashes.
- Improve roadway elements to current design criteria.
- Reduce vehicle conflicts.

Need 2: Accommodate Existing and Future Demands

Objectives (To the Extent Practicable)

- Reduce corridor congestion.
- Improve operations to achieve LOS standards.
- Accommodate large vehicles and freight movements.
- Accommodate non-motorized use.

Need 3: Minimize Adverse Impacts to the Environmental Characteristics of the Study Area

Objectives (To the Extent Practicable)

- Minimize adverse impacts to the Missouri River and surrounding wetlands.
- Avoid or minimize adverse impacts to historic, cultural, archaeological, and recreational resources.
- Preserve the scenic character of the corridor.

Other Considerations

- Local and regional planning efforts
- Funding availability
- Construction feasibility and physical constraints
- Impacts to existing residents and businesses in the area



**Recommended
Improvement
Options**

1. 15th Street North Intersection

- Extend WB right-turn lane



2. 19th Street North Intersection

- Enhanced non-motorized crossing treatment(s)



3. Big Stack Mobile Home Court Approach

- Reconstruct or relocate



4. Business District Access

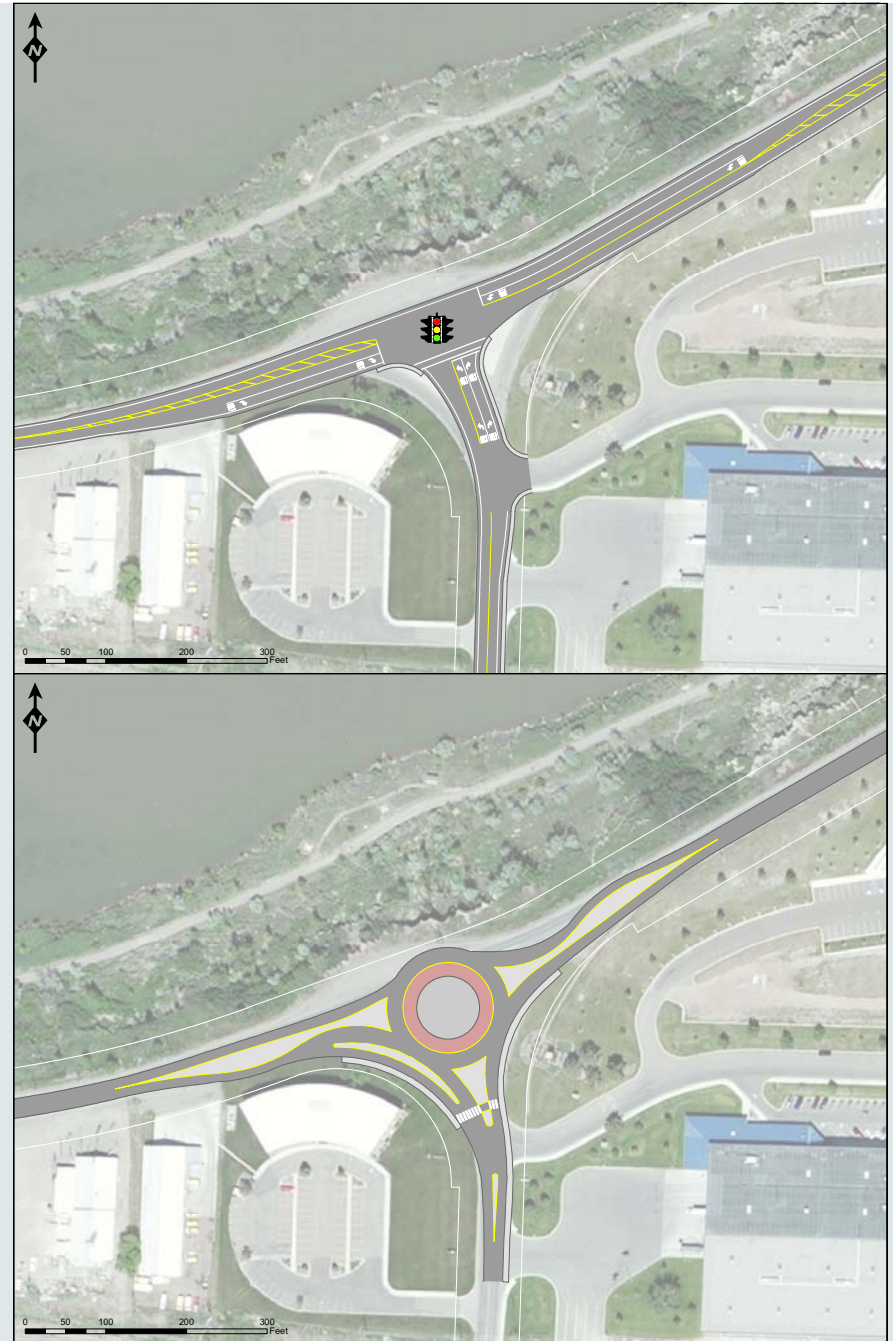
- Reconstruct roadway



5. 25th Street North Intersection

- Traffic signal or roundabout

For conceptual purposes only



6. Eagle Falls Golf Club Access

- New access along River Drive



7. Railroad Crossing

- Diagnostics review of crossing



8. River Drive North Reconstruction

- One travel lane in each direction
- Center left-turn lane (where appropriate)
- Non-motorized accommodations



1. Segment 1 (15th Street North to 25th Street North)

- 15th Street North – Extend WB right-turn lane
- 19th Street North – enhanced non-motorized crossing treatment
- Big Stack Mobile Home Court Approach – reconstruct or realign
- Business District Access – reconstruct
- 25th Street North – traffic signal or roundabout
- River Drive North Reconstruction



2. Segment 2 (25th Street North to 38th Street North)

- Eagle Falls Golf Club Access – new access
- River Drive North Reconstruction



A landscape photograph showing a road on the left and a lake on the right. A large, semi-transparent brown circle is overlaid in the center, containing the text "Conclusion and Next Steps" in white. The background features a clear blue sky, a utility pole with a street light, a dark pickup truck on the road, and a dam or bridge structure in the distance across the water.

Conclusion and Next Steps

Next Steps

- Receive and consider comments on draft corridor study report from:
 - Public
 - Stakeholders
 - Resource agencies
- Review with study planning team
- Prepare final corridor study report
- Post to study website, distribute, and conclude process

Comment period runs
from July 29, 2016
through August 31, 2016

- Depends on availability of funds.
- Required steps:
 - Identify and secure a funding source(s)
 - Follow MDT guidelines for project nomination and development

or

 - Coordinate with MDT via the System Impact Action Process (SIAP)

- **Comment sheets**

- **Study website:**

www.mdt.mt.gov/pubinvolve/riverdrive

- **Study Contacts:**

Corrina Collins

MDT Project Manager

(406) 444-9131

ccollins@mt.gov

Dave Hand

MDT Great Falls

District Administrator

(406) 454-5880

dhand@mt.gov

- **Info on newsletter**