

# Welcome!

to the River's Edge Trail  
Connector Project  
**OPEN HOUSE**







# Project Benefits



IMAGE COURTESY OF LPW ARCHITECTURE

- **Eliminates pedestrian crossing conflicts**
- **Improves trail safety and flow**







# Preferred Alternative

## Retaining Wall with Road Realignment


**Lowest Environmental Impact**

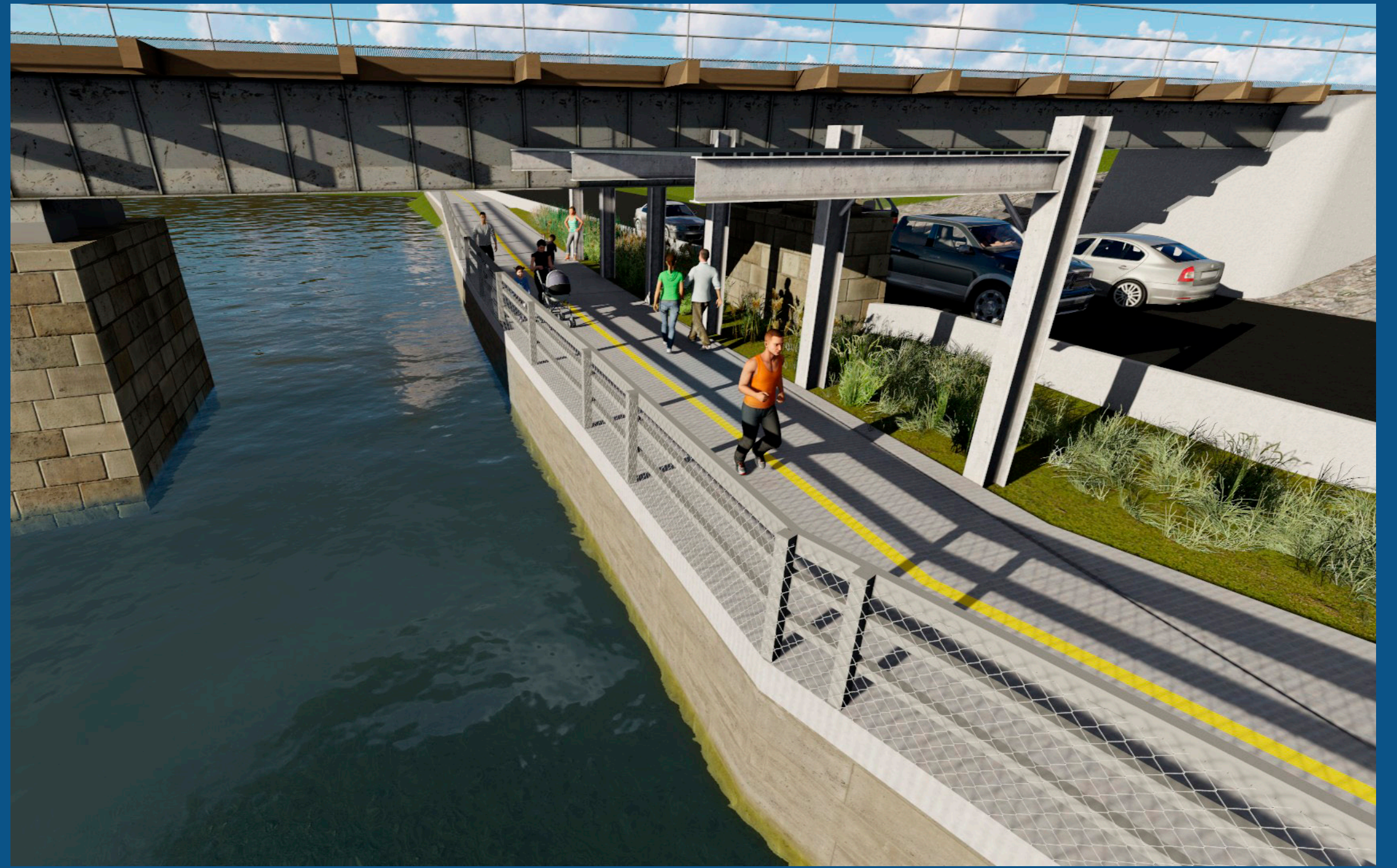
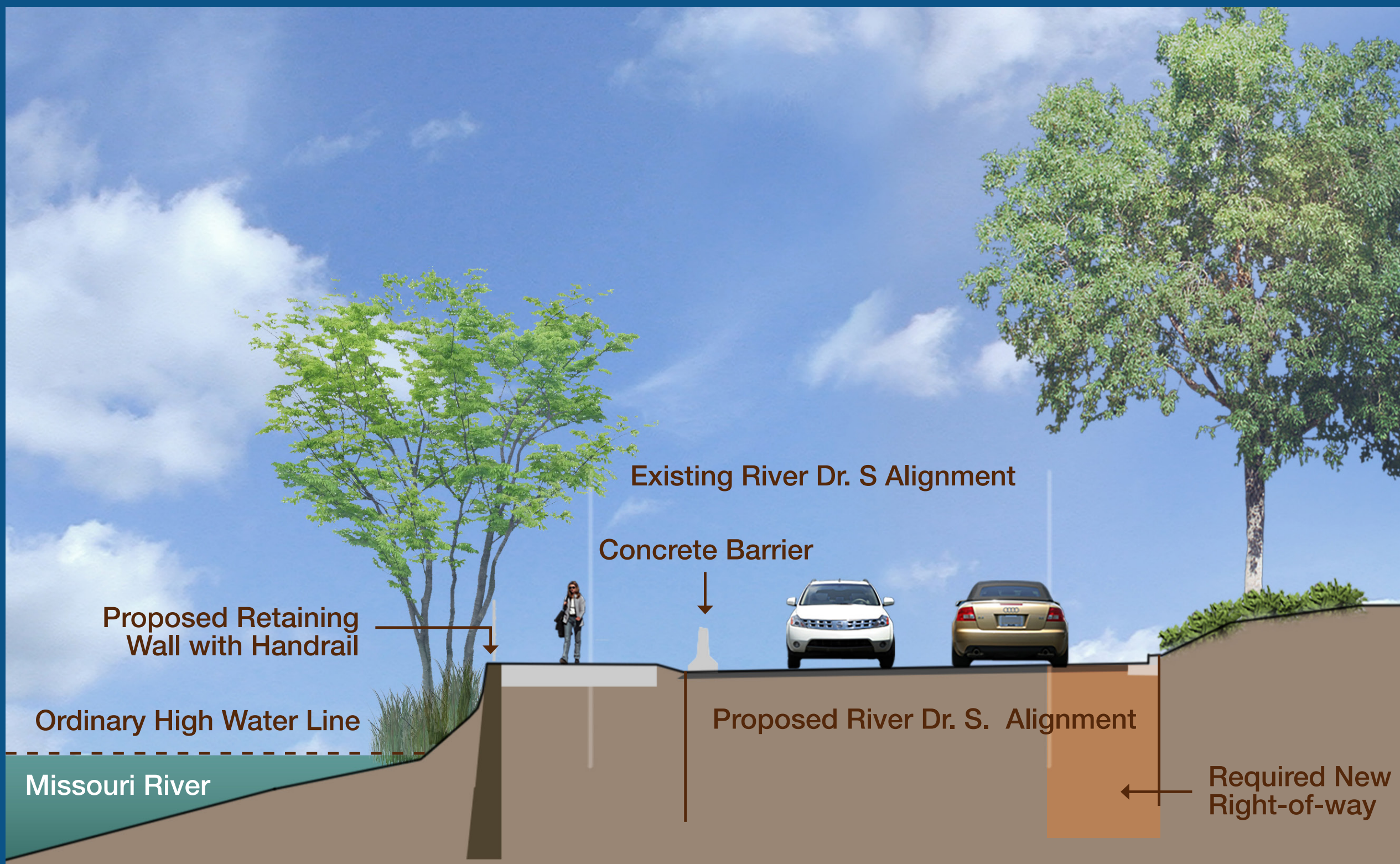


IMAGE COURTESY OF LPW ARCHITECTURE




**More Cost Effective**


**Reduced Geotechnical Concerns**

- ▶ **2,000+ ft new trail**
- ▶ **Realignment of River Dr. S to limit impacts to Missouri River**
- ▶ **850-900-ft new retaining wall**
- ▶ **Less than 300-ft of riverbank impacts**







# Other Alternatives

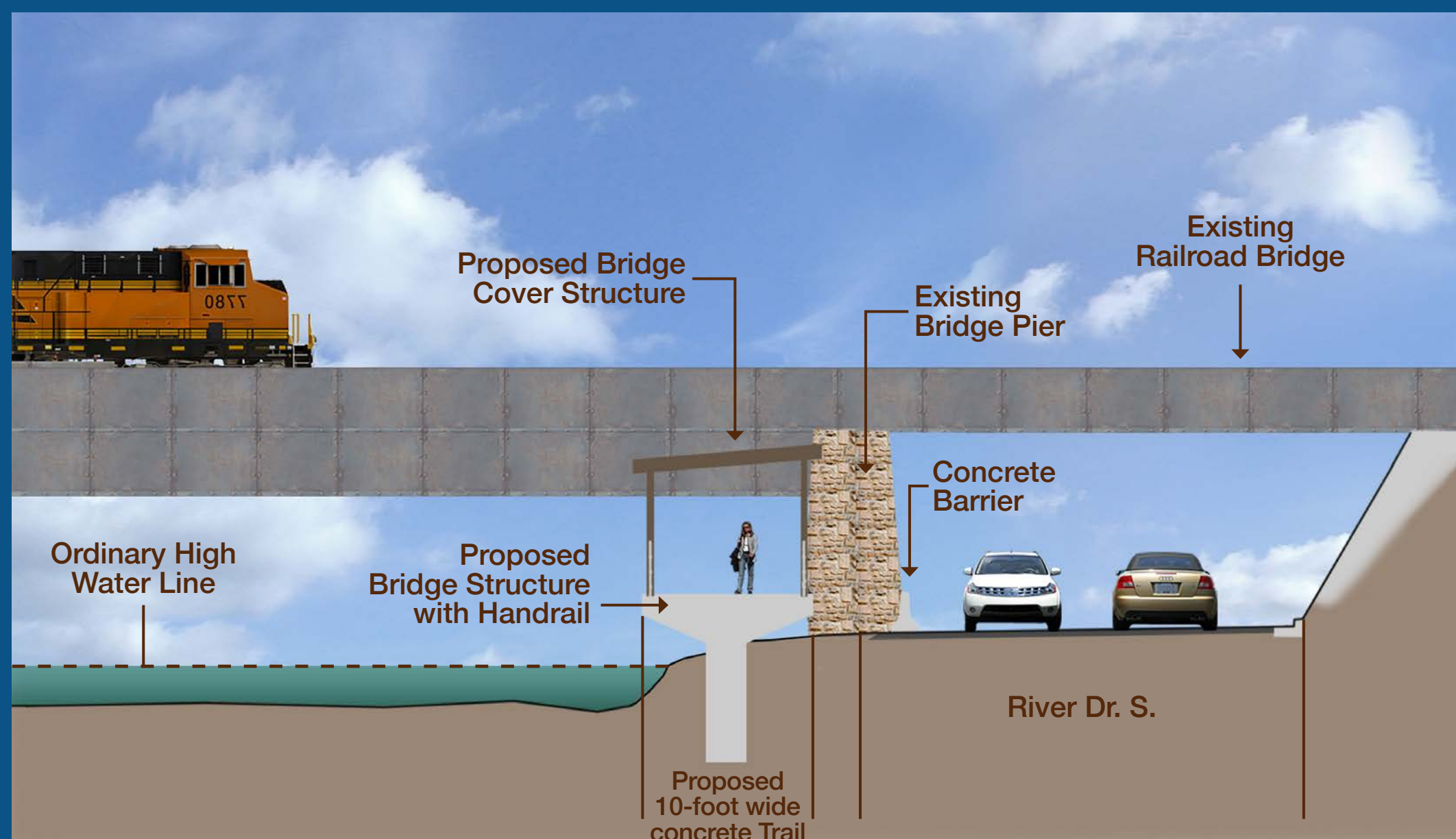
## Retaining Wall Only



IMAGE COURTESY OF LPW ARCHITECTURE

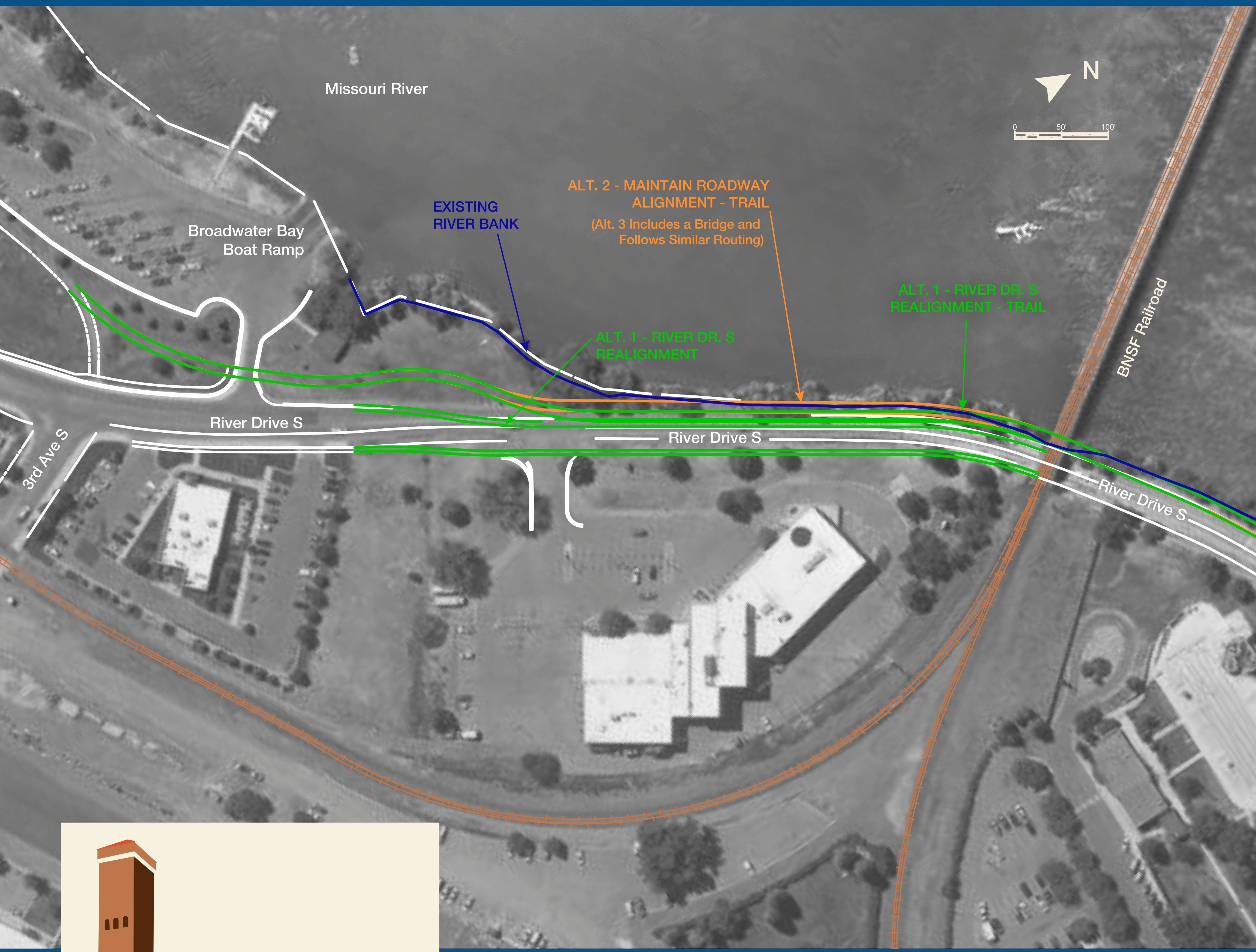
- ✘ Increased Environmental Impacts
- ✘ Longer Retaining Wall
- ✘ Higher Permitting, Construction and Future Maintenance Costs

## Bridge



- ✘ Increased Environmental Impacts
- ✘ Higher Permitting, Construction and Future Maintenance Costs
- ✘ Increased Maintenance Concerns





Leave public  
comments here.