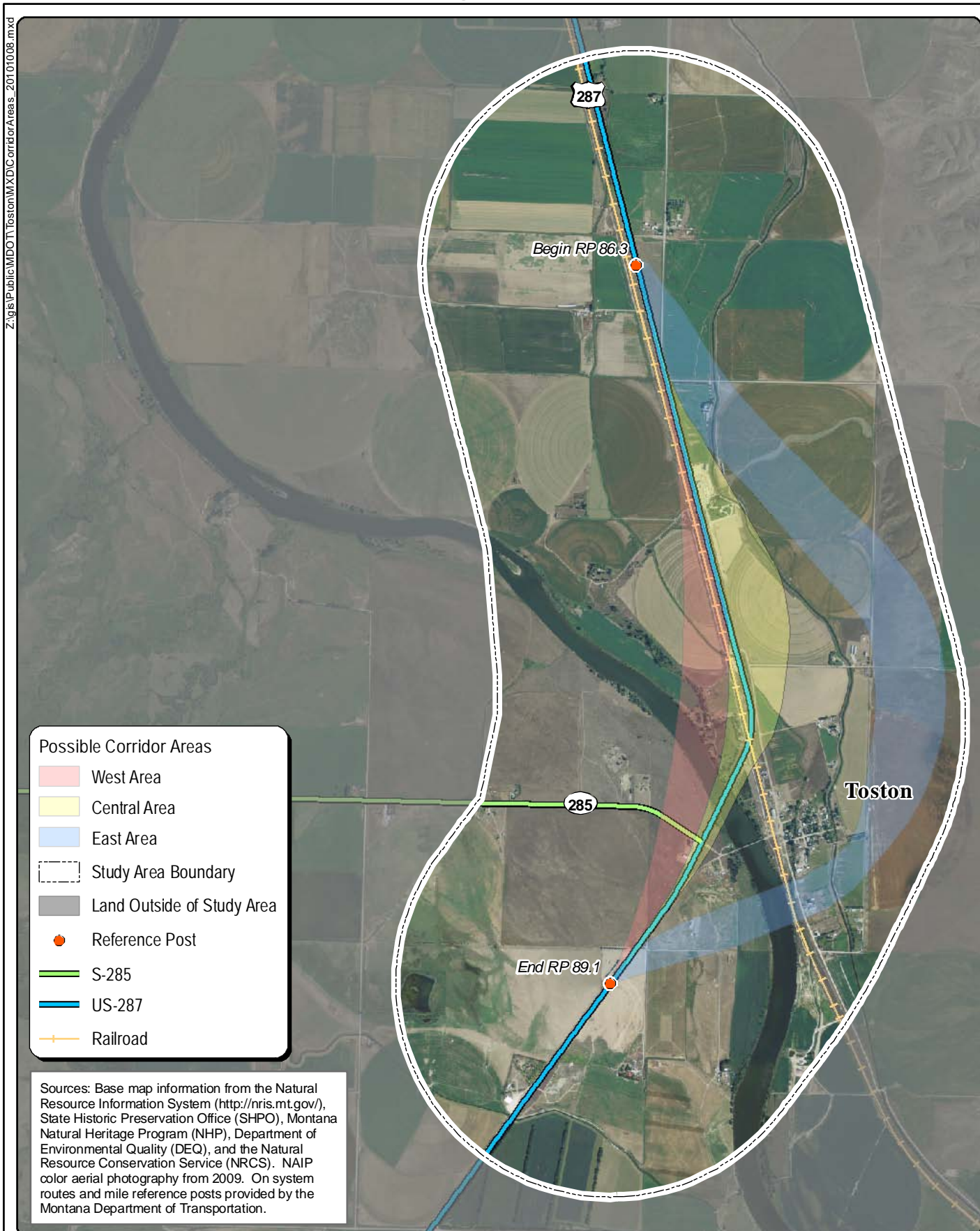


Possible Corridor Areas

Z:\gis\Public\MDOT\Toston\MXD\CorridorAreas_20101008.mxd



- Possible Corridor Areas
- West Area
 - Central Area
 - East Area
 - Study Area Boundary
 - Land Outside of Study Area
 - Reference Post
 - S-285
 - US-287
 - Railroad

Sources: Base map information from the Natural Resource Information System (<http://nr.is.mt.gov/>), State Historic Preservation Office (SHPO), Montana Natural Heritage Program (NHP), Department of Environmental Quality (DEQ), and the Natural Resource Conservation Service (NRCS). NAIP color aerial photography from 2009. On system routes and mile reference posts provided by the Montana Department of Transportation.

Figure 7-5
Possible Corridor Areas
Toston Missouri River Crossing Corridor



October 8, 2010
DRAFT

**Toston Missouri River
Corridor Planning Study**