

-  Toston Missouri River Crossing Corridor
-  Study Area Boundary
-  Land Outside of Study Area
-  Potential Wetlands within Study Area
-  Missouri River
-  Mile Post Reference Marker
-  Fishing Access Site
-  S-285
-  US-287
-  Off System Route
-  Railroad
-  Ditch or Stream

Sources: Base map information from the Natural Resource Information System (<http://nrri.mt.gov/>), NAIP color aerial photography from 2009. The potential wetland areas depicted on this figure are based on a visual survey of recent aerial photographs. Field work and future wetland delineations will be required for compliance with Clean Water Act (CWA) 404 regulations as improvement options are defined. On system and off system routes and mile reference markers provided by the Montana Department of Transportation.

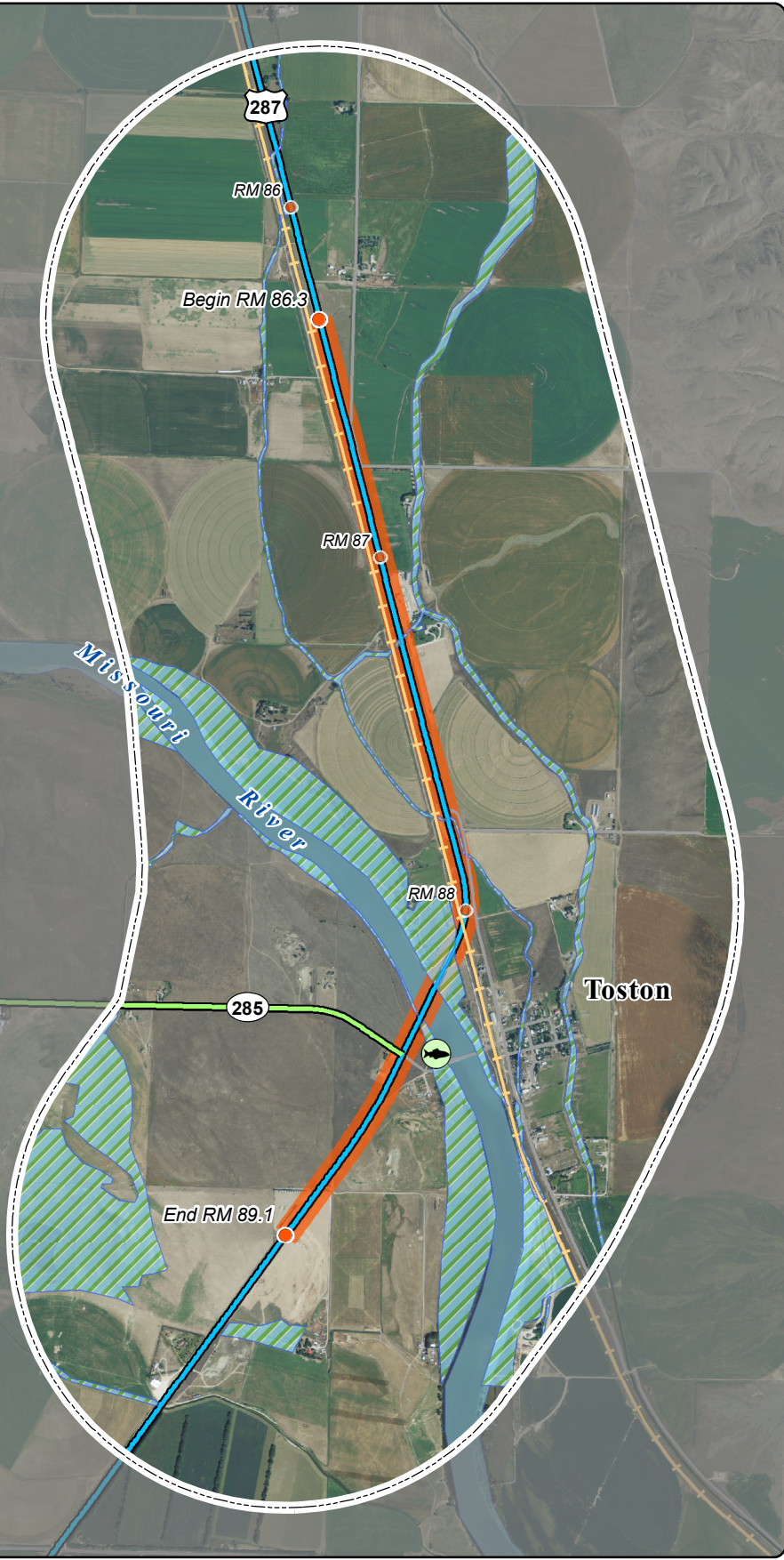



Figure 3-7
 Potential Wetlands
 Toston Missouri River Crossing Corridor

0 2,000 4,000 6,000
 Feet

N

 February 23, 2010
DRAFT



Toston Missouri River
 Corridor Planning Study