



# US 191 Corridor Study

*Four Corners to Beaver Creek*



## Virtual Informational Meeting

---

July 28, 2020



# Agenda

---

- Introductions
- Planning Study Process
- Corridor History & Study Identification
- Key Findings & Recommendations
- Next Steps
- Question/Answer Forum





# **Title VI Considerations**

This meeting is held pursuant to Title VI of the 1964 Civil Rights Act which ensures that no person shall be excluded from participation in, denied the benefits of, or otherwise be subjected to discrimination on the basis of a protected status during any MDT project.

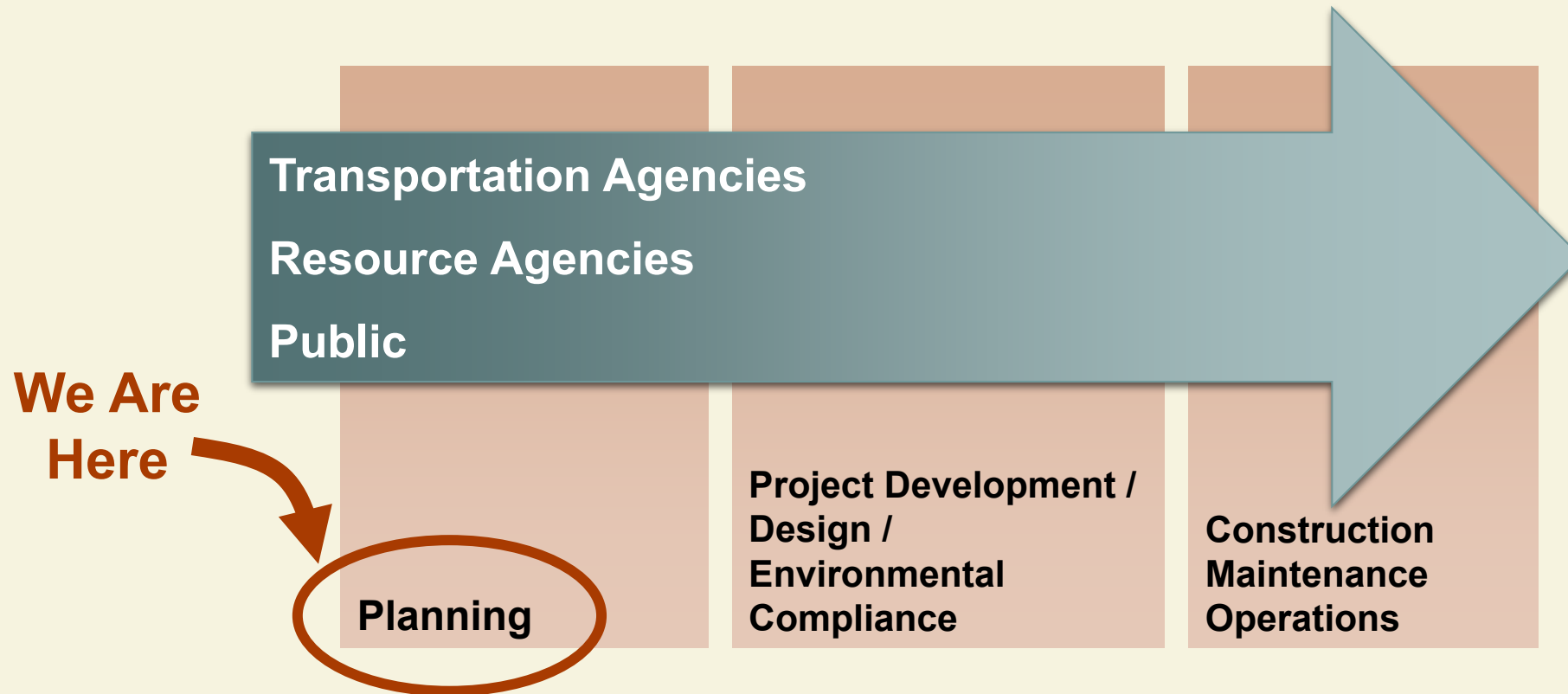


# Planning Study Process

---



# What is a corridor study?



**A corridor study is conducted before design, right-of-way acquisition, environmental compliance, and construction.**



# Study Goals and Purpose

- Identify **needs and objectives**
- Identify potential **impacts and constraints**
- Identify short-, mid-, and long-range **improvements**
- Develop planning-level **cost estimates** and identify **funding** sources
- Develop information to **support future project development** activities including design and environmental compliance







# Corridor History & Study Identification

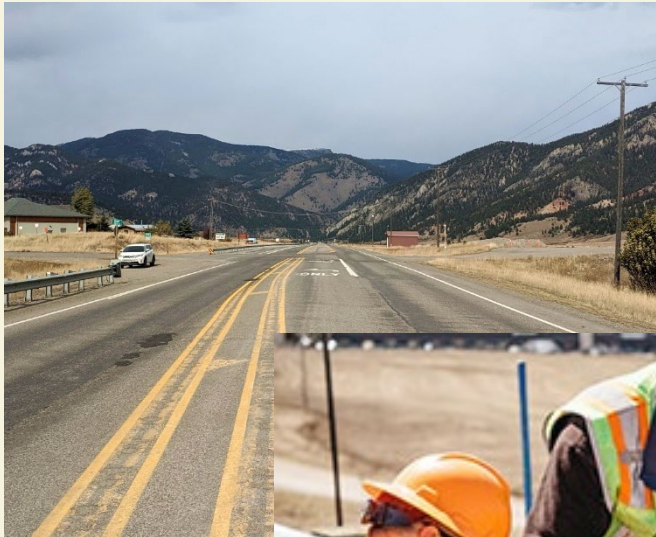
---



# Corridor History

MDT has completed multiple projects in recent years, including:

- **Guardrail**
- **Roadway widening and resurfacing**
- **Slope flattening**
- **Safety improvements**
- **Turn lanes**
- **Intersection improvements**





# Study Identification

- MDT Districts identify study corridors based on **public feedback from cities and counties** within their areas.
- This corridor was identified based on ongoing public comments about **continued growth, traffic volumes, and safety**.
- The study provides a **broad view** of the entire corridor rather than addressing individual locations separately.



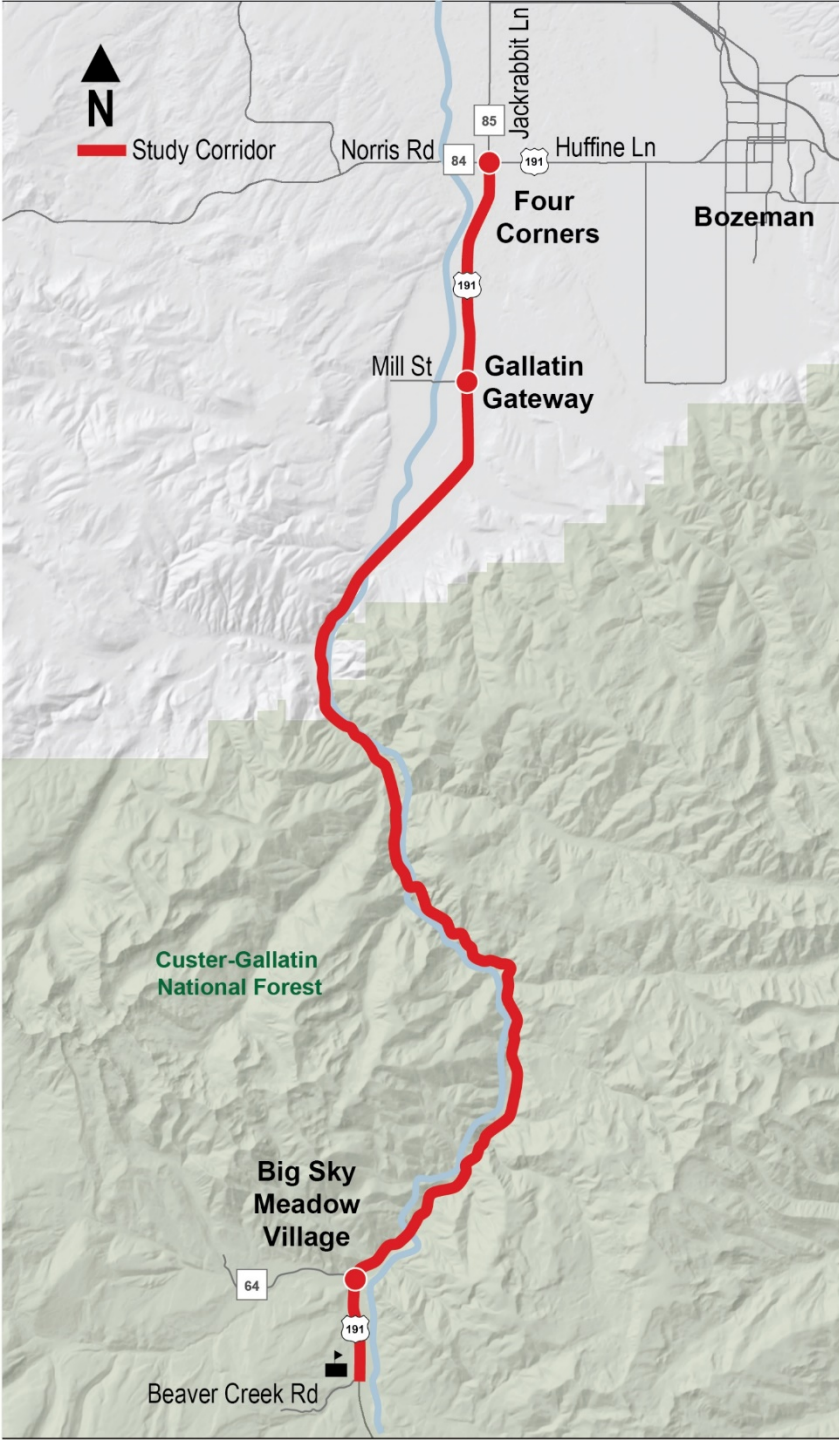




# Key Findings & Recommended Improvements

---





# Study Area

---

- **Beginning**: Huffine Lane/Norris Road/Jackrabbit Lane intersection in Four Corners
- **End**: Beaver Creek Rd south of MT 64
- **Total Length**: 36.6 miles
- **Users**: Tourists, recreationists, commuters, local residents and businesses, commercial truckers



# Key Findings: Needs & Objectives

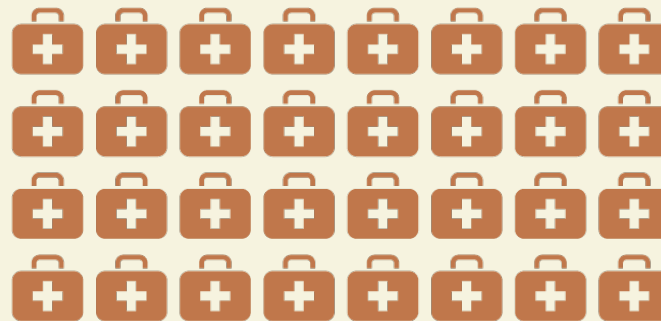
## Need 1: Improve the Safety of the Corridor

### Objectives

- Reduce fatalities and serious injuries in support of Vision Zero.
- Improve roadway elements to meet current design standards.
- Reduce animal-vehicle conflicts.
- Reduce roadside hazards.
- Reduce vehicle conflicts.

**1,077** TOTAL CRASHES  
(2009 - 2018)\*

**32** SERIOUS INJURIES



**7** FATAL INJURIES



**24%** were WILD ANIMAL crashes



**22%** were collisions with a **FIXED OBJECT** (i.e. guardrail, ditch)



**12%** resulted in a **ROLL OVER**



**31%** occurred under **ADVERSE ROAD CONDITIONS**



# Key Findings: Needs & Objectives

## Need 2: Improve the Operations of the Corridor


### Objectives

- Accommodate existing and future travel demands.
- Provide reasonable access to adjacent lands.
- Improve non-motorized mobility and accessibility.
- Improve travel demand management.
- Accommodate wildlife movement.


**7,000 to 17,000** VEHICLES PER DAY  
on US 191 (in 2018)



 **10% to 14%**  
of traffic on US 191 is  
**COMMERCIAL TRUCKS**

 **2.4%** **GROWTH PER YEAR**  
projected through 2040

**POOR TO FAILING**  
traffic operations projected  
during **2040** peak seasons





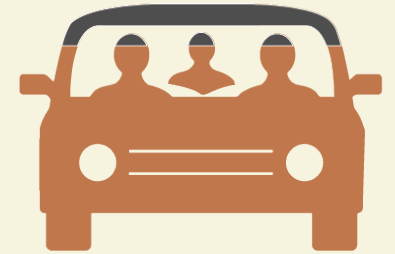
# Key Findings: Needs & Objectives

## Other Considerations:

- Impacts to environmental resources
- Local and regional planning
- Temporary construction impacts
- Funding availability
- Construction feasibility and physical constraints
- Corridor context, function, and use
- Maintenance cost and responsibility



GALLATIN COUNTY'S  
population has grown by  
**25%** since 2010



**83%** of commuters in  
GALLATIN COUNTY  
commute via personal  
VEHICLE OR CARPOOL

The GALLATIN RIVER  
is an important  
ENVIRONMENTAL  
RESOURCE





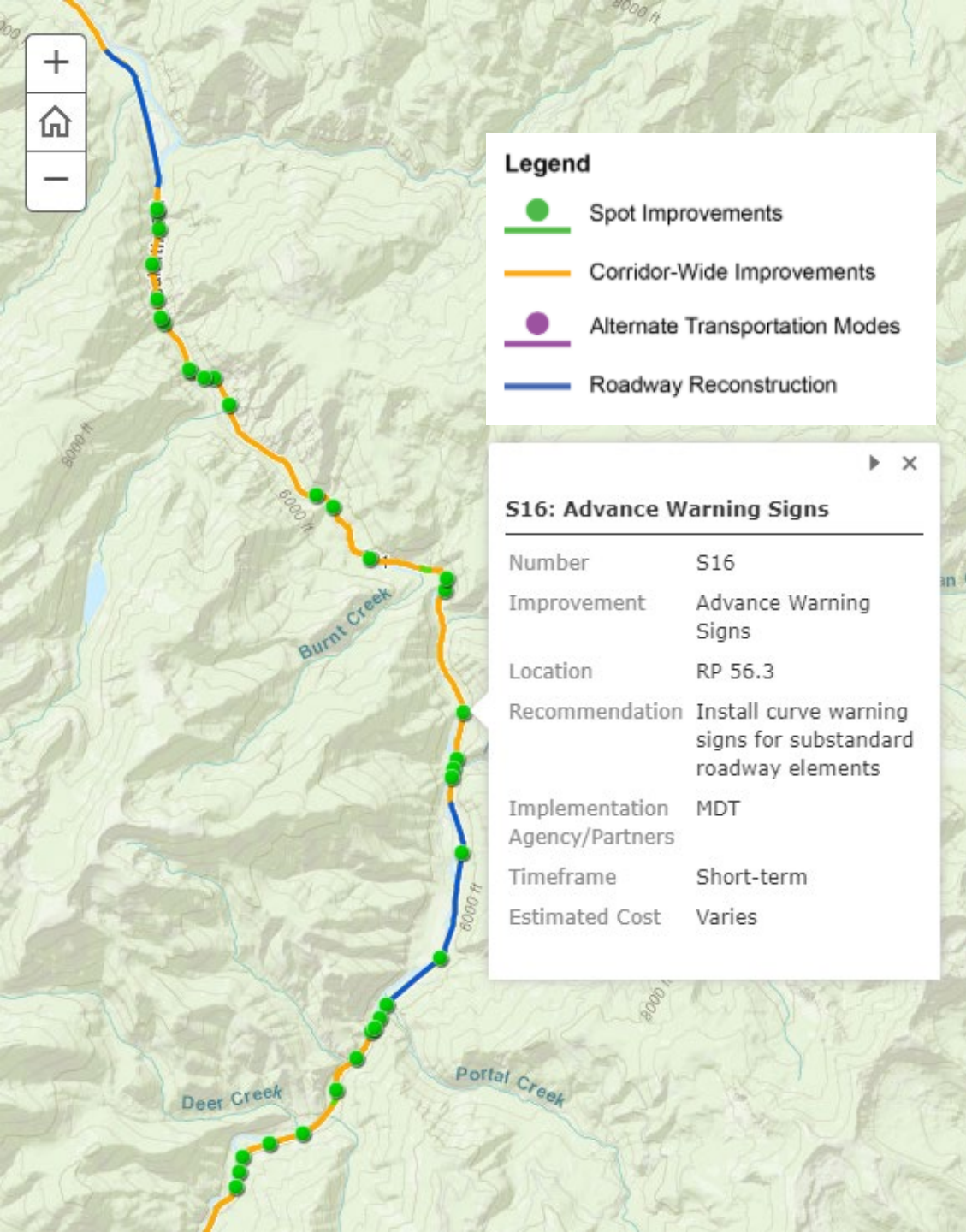


The study identified a **range of improvement options** to address the corridor **needs and objectives** and areas of concern.



# Recommended Improvements

- **Visit** MDT website at [www.mdt.mt.gov/pubinvolve/us191/](http://www.mdt.mt.gov/pubinvolve/us191/)
- **View** the story map to see view improvement options interactively
- **Review** corridor study report to learn more about each improvement option



# Next Steps

PLANNING



STEP 1

PROJECT  
DEVELOPMENT



STEP 2

CONSTRUCTION



STEP 3

Public Involvement  
*(Ongoing throughout all steps)*

- Identify/Secure Funding
- Project Nomination
- Feasibility/Survey Phase
- Design
- Right-of-Way Acquisition

**WE ARE HERE**





# FOR MORE INFORMATION OR TO SUBMIT COMMENTS



## CALL

Katie Potts (MDT Project Manager)  
At **406-444-9238**



## EMAIL

**KPOTTS@MT.GOV**



## MAIL

Katie Potts  
Montana Department of Transportation  
PO Box 201001  
Helena, MT 59620



## VISIT

**[WWW.MDT.MT.GOV/PUBINVOLVE/US191](http://WWW.MDT.MT.GOV/PUBINVOLVE/US191)**

Please Submit Comments By:  
**AUGUST 28, 2020**

# We want to hear from you!







# Question & Answer Forum

---



# Thank you!

[www.mdt.mt.gov/pubinvolve/US191](http://www.mdt.mt.gov/pubinvolve/US191)

