

Attachment 2: Photo Log

This photo log illustrates conditions observed during a field review conducted July 16 to July 18, 2017. Photographs supplemented by Google imagery illustrate representative views of potentially favorable safety rest area site locations within each of the six study segments from west to east along the US 2 corridor. The photographs do not provide a comprehensive account of all conditions within the study segments. Conditions were visually inspected; no testing was conducted during collection of these photos.

Contents

Segment 1 – Happy’s Inn	3
Segment 2 – Browning	12
Segment 3 – Shelby	25
Segment 4 – Dodson	37
Segment 5 – Vandalia	42
Segment 6 – Frazer	55

Segment 1 – Happy’s Inn



Photo 1. Segment 1, RP 55.8±, looking westbound.



Photo 2. Segment 1, RP 55.8±, looking eastbound.



Photo 3. Segment 1, RP 55.8±, looking west of US 2.



Photo 4. Segment 1, RP 55.8±, potential wastewater area.



Photo 5. Segment 1, RP 58.3±, looking westbound.

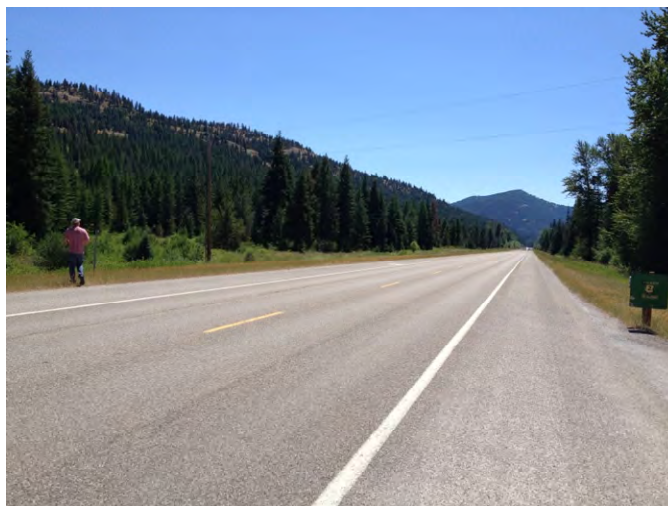


Photo 6. Segment 1, RP 58.3±, looking eastbound.



Photo 7, Segment 1, RP 58.5±, looking westbound.

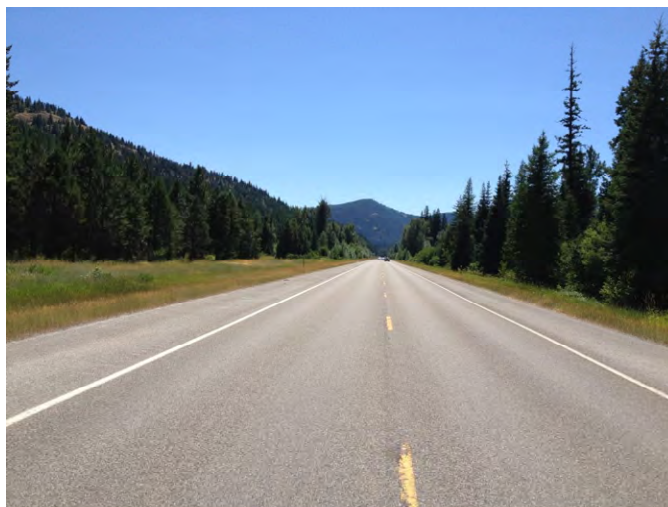


Photo 8. Segment 1, RP 58.5±, looking eastbound.



Photo 9. Segment 1, RP 58.5±, potential wastewater area.



Photo 10. Segment 1, RP 61.5±, looking westbound.



Photo 11. Segment 1, RP 61.5±, looking eastbound.



Photo 12. Segment 1, RP 61.5±, looking NE of US 2 at potential wastewater area.



Photo 13. Segment 1, RP 62.2±, looking westbound.



Photo 14. Segment 1, RP 62.2±, looking eastbound.



Photo 15. Segment 1, RP 62.2±, looking NW of US 2.



Photo 16. Segment 1, RP 62.2±, potential wastewater area.



Photo 17. Segment 1, RP 63.1±, looking westbound.



Photo 18. Segment 1, RP 63.1±, looking eastbound.



Photo 19. Segment 1, RP 63.1±, potential wastewater area.



Photo 20. Segment 1, RP 66.4±, looking westbound.



Photo 21. Segment 1, RP 66.4±, looking eastbound.



Photo 22. Segment 1, RP 66.4±, open area south of US 2 at MDT maintenance yard, potential wastewater area.



Photo 23. Segment 1, RP 66.5±, looking westbound, across from Forest Rd #6734.

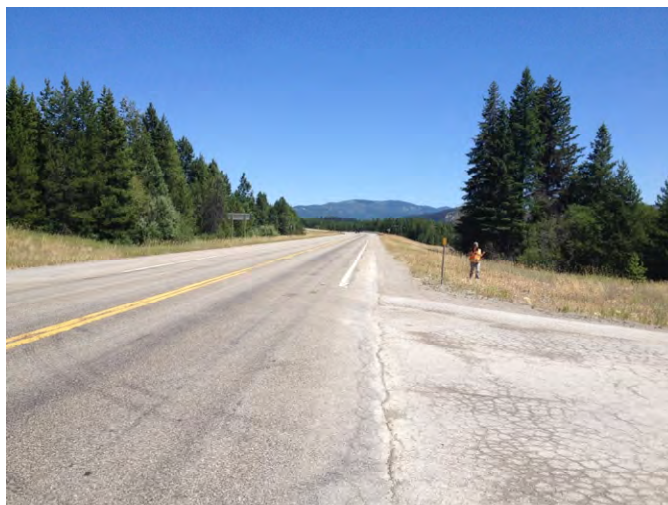


Photo 24. Segment 1, RP 66.5±, looking eastbound, across from Forest Rd #6734.



Photo 25. Segment 1, RP 73.0±, looking westbound.



Photo 26. Segment 1, RP 73.0±, looking eastbound.



Photo 27. Segment 1, RP 73.0±, looking eastbound.



Photo 28. Segment 1, RP 75.2±, potential wastewater area.



Photo 29. Segment 1, RP 75.2±, looking eastbound.

Segment 2 – Browning



Photo 30. Google Image: Segment 2, RP 212.2±, looking westbound.



Photo 31. Google Image: Segment 2, RP 212.2±, looking eastbound.



Photo 32. Google Image: Segment 2, RP 212.2±, looking north of US 2 at potential wastewater area.



Photo 33. Google Image: Segment 2, RP 212.2±, looking south of US 2.



Photo 34. Segment 2, RP 213.9±, looking westbound.



Photo 35. Segment 2, RP 213.9±, looking eastbound.



Photo 36. Segment 2, RP 213.9±, potential wastewater area.



Photo 37. Segment 2, RP 218.7±, looking westbound.



Photo 38. Segment 2, RP 218.7±, looking eastbound.



Photo 39. Segment 2, RP 218.7±, potential wastewater area.



Photo 40. Google Image: Segment 2, RP 223.6±, looking westbound.



Photo 41. Google Image: Segment 2, RP 223.6±, looking eastbound.

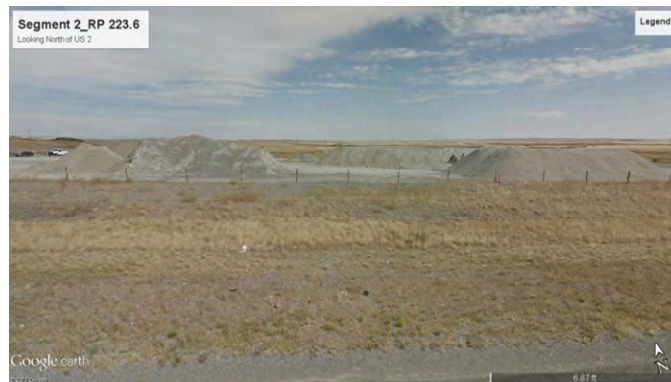


Photo 42. Google Image: Segment 2, RP 223.6±, looking north of US 2.



Photo 43. Segment 2, RP 226.0±, looking westbound.



Photo 44. Segment 2, RP 226.0±, looking eastbound.



Photo 45. Segment 2, RP 226.0±, potential wastewater area.



Photo 46. Google Image: Segment 2, RP 226.8±, looking westbound.

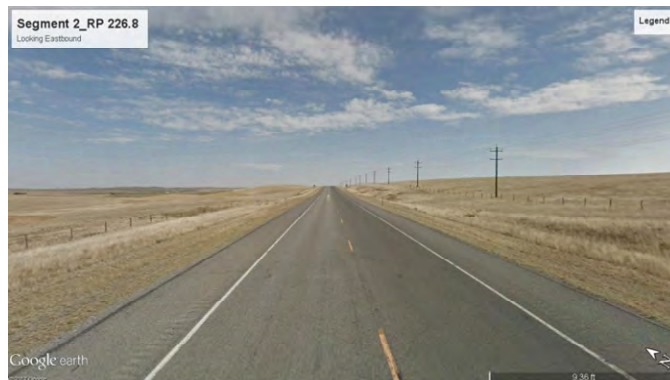


Photo 47. Google Image: Segment 2, RP 226.8±, looking eastbound.



Photo 48. Google Image: Segment 2, RP 226.8±, looking SE of US 2 at potential wastewater area.



Photo 49. Segment 2, RP 227.9±, looking westbound.



Photo 50. Segment 2, RP 227.9±, looking eastbound.



Photo 51. Segment 2, RP 227.9±, potential wastewater area.



Photo 52. Segment 2, RP 230.4±, looking westbound.



Photo 53. Segment 2, RP 230.4±, looking eastbound.



Photo 54. Segment 2, RP 230.4±, potential wastewater area.



Photo 55. Segment 2, RP 231.1±, looking westbound.



Photo 56. Segment 2, RP 231.1±, looking eastbound.



Photo 57. Segment 2, RP 231.1±, potential wastewater site.



Photo 58. Segment 2, RP 235.9±, looking westbound.



Photo 59. Segment 2, RP 235.9±, looking eastbound.



Photo 60. Segment 2, RP 235.9±, potential wastewater area.



Photo 61. Segment 2, RP 237.2±, looking westbound.



Photo 62. Segment 2, RP 237.2±, looking eastbound.

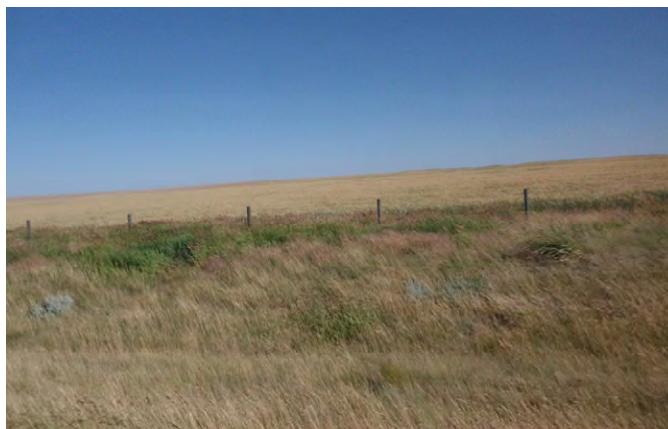


Photo 63. Segment 2, RP 237.2±, potential wastewater area.



Photo 64. Segment 2, RP 241.4±, looking westbound.

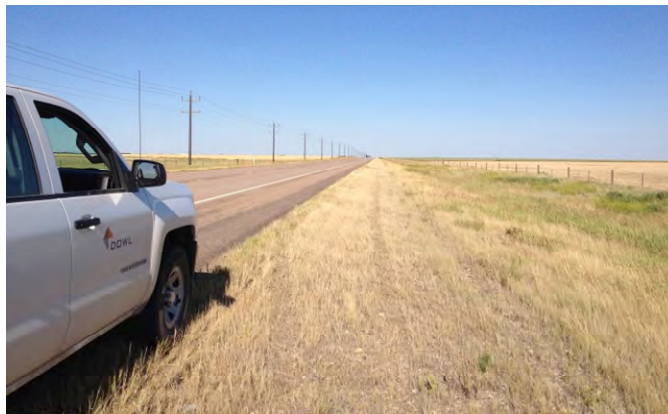


Photo 65. Segment 2, RP 241.4±, looking eastbound.



Photo 66. Segment 2, RP 241.4±, potential wastewater area.

Segment 3 – Shelby



Photo 67. Google Image: Segment 3, RP 277.0±, looking westbound.



Photo 68. Google Image: Segment 3, RP 277.0±, looking eastbound.



Photo 69. Segment 3, RP 282.1±, looking westbound from south side of US 2.



Photo 70. Segment 3, RP 282.1±, looking eastbound from south side of US 2.



Photo 71. Segment 3, RP 282.1±, looking westbound from north side of US 2.



Photo 72. Segment 3, RP 282.1±, looking eastbound from north side of US 2.



Photo 73. Segment 3, RP 282.1±, potential wastewater area.



Photo 74. Google Image: Segment 3, RP 285.2±, looking westbound.



Photo 75. Google Image: Segment 3, RP 285.2±, looking eastbound.



Photo 76. Google Image: Segment 3, RP 285.2±, looking south of US 2 at potential wastewater area.

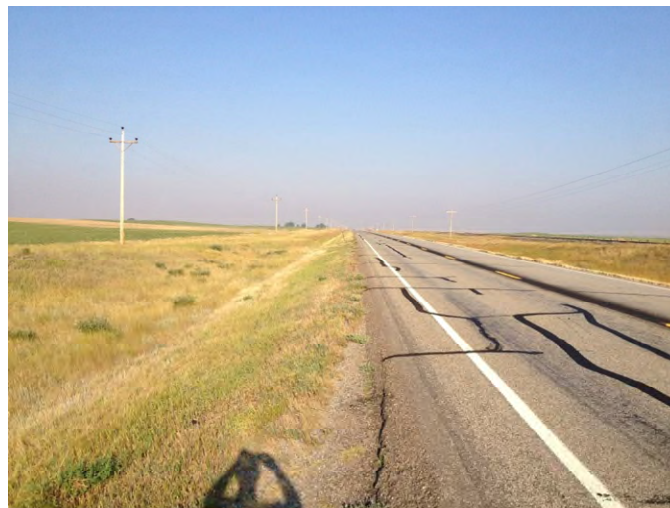


Photo 77. Segment 3, RP 286.9±, looking westbound.



Photo 78. Segment 3, RP 286.9±, looking eastbound.



Photo 79. Segment 3, RP 286.9±, potential wastewater area.



Photo 80. Google Image: Segment 3, RP 289.5±, looking westbound.



Photo 81. Google Image: Segment 3, RP 289.5±, looking eastbound.



Photo 82. Google Image: Segment 3, RP 289.5±, looking south of US 2.



Photo 83. Segment 3, RP 293.9±, looking westbound.

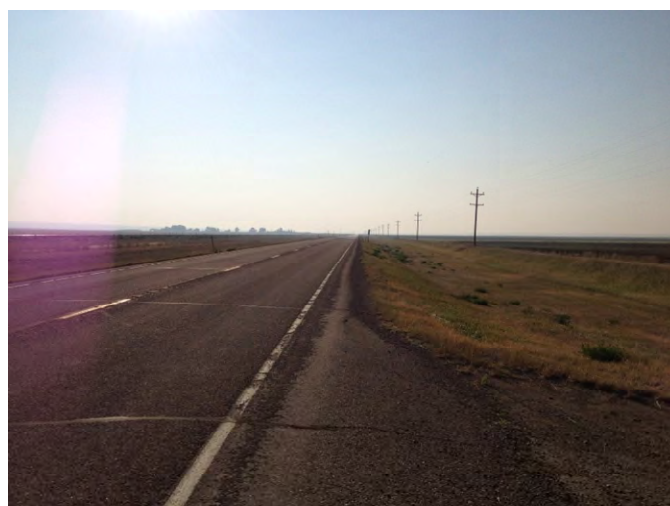


Photo 84. Segment 3, RP 293.9±, looking eastbound.



Photo 85. Segment 3, RP 293.9±, potential wastewater area.



Photo 86. Google Image: Segment 3, RP 296.3±, looking westbound.



Photo 87. Google Image: Segment 3, RP 296.3±, looking eastbound.



Photo 88. Google Image: Segment 3, RP 296.3±, looking south of US 2 at potential wastewater area.



Photo 89. Segment 3, RP 300.8±, looking westbound.



Photo 90. Segment 3, RP 300.8±, looking eastbound.



Photo 91. Segment 3, RP 300.8±, looking SW of US 2.



Photo 92. Segment 3, RP 300.8±, looking SE of US 2.



Photo 93. Segment 3, RP 300.8±, looking NW of US 2.



Photo 94. Segment 3, RP 300.8±, looking NE of US 2.



Photo 95. Segment 3, RP 300.8±, potential wastewater area.



Photo 96. Segment 3, RP 309.6±, looking westbound.



Photo 97. Segment 3, RP 309.6±, looking eastbound.



Photo 98. Segment 3, RP 309.6±, potential wastewater area.



Photo 99. Segment 3, RP 312.0±, looking westbound.



Photo 100. Segment 3, RP 312.0±, looking eastbound.



Photo 101. Segment 3, RP 312.0±, potential wastewater area.

Segment 4 – Dodson



Photo 102. Google Image: Segment 4, RP 435.1±, looking westbound.



Photo 103. Google Image: Segment 4, RP 435.1±, looking eastbound.



Photo 104. Google Image: Segment 4, RP 435.1±, looking south of US 2 at potential wastewater area.



Photo 105. Google Image: Segment 4, RP 438.3±, looking westbound.



Photo 106. Google Image: Segment 4, RP 438.3±, looking eastbound.

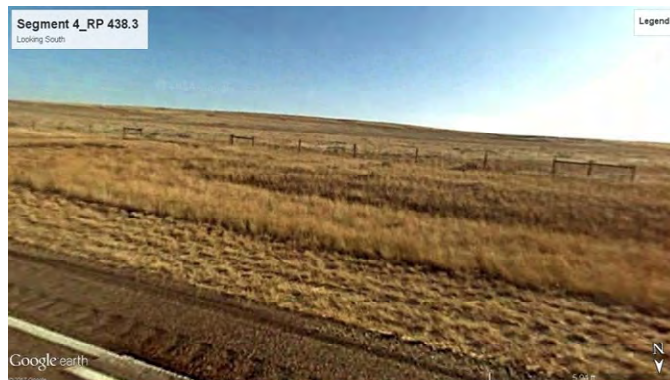


Photo 107. Google Image: Segment 4, RP 438.3±, looking south of US 2.

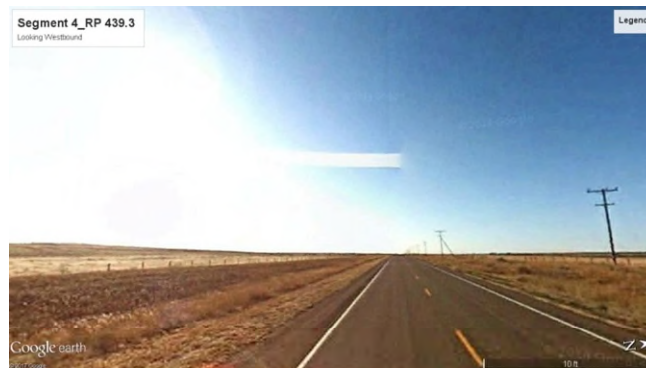


Photo 108. Google Image: Segment 4, RP 439.3±, looking westbound.



Photo 109. Google Image: Segment 4, RP 439.3±, looking eastbound.

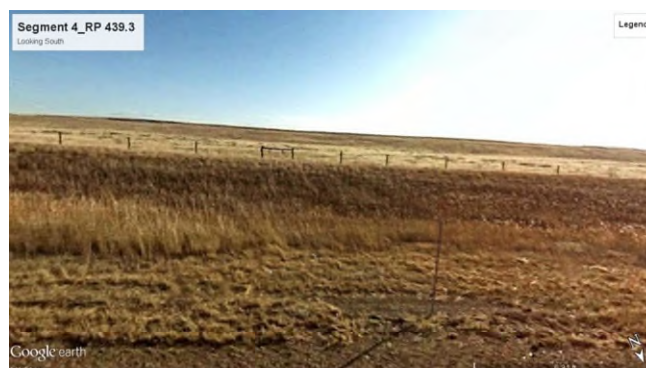


Photo 110. Google Image: Segment 4, RP 439.3±, looking south of US 2.



Photo 111. Google Image: Segment 4, RP 439.3±, looking north of US 2 at potential wastewater area.

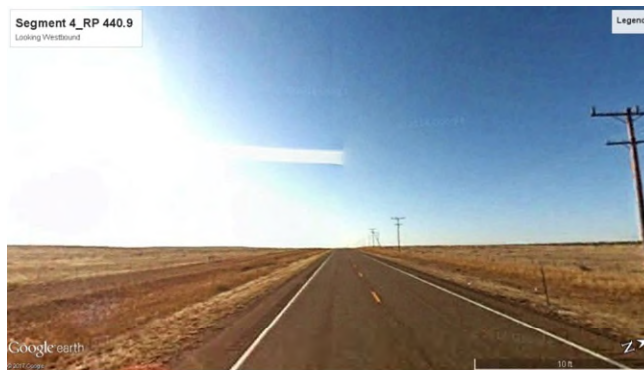


Photo 112. Google Image: Segment 4, RP 440.9±, looking westbound.



Photo 113. Google Image: Segment 4, RP 440.9±, looking eastbound.



Photo 114. Google Image: Segment 4, RP 440.9±, looking south of US 2.



Photo 115. Google Image: Segment 4, RP 440.9±, looking north of US 2 at potential wastewater area.

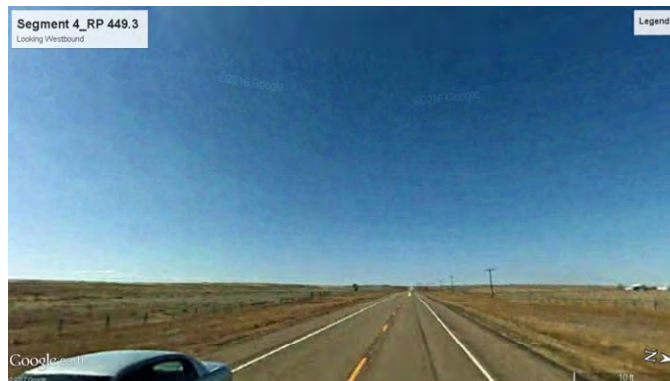


Photo 116. Google Image: Segment 4, RP 449.3±, looking westbound.



Photo 117. Google Image: Segment 4, RP 449.3±, looking eastbound.



Photo 118. Google Image: Segment 4, RP 449.3±, looking south of US 2 at potential wastewater area.

Segment 5 – Vandalia



Photo 119. Segment 5, RP 503.5±, looking westbound.



Photo 120. Segment 5, RP 503.5±, looking eastbound.



Photo 121. Segment 5, RP 503.5±, looking south of US 2.



Photo 122. Segment 5, RP 503.5±, potential wastewater area.



Photo 123. Segment 5, RP 505.5±, looking westbound.



Photo 124. Segment 5, RP 505.5±, looking eastbound.



Photo 125. Segment 5, RP 505.5±, looking south of US 2.



Photo 126. Segment 5, RP 505.5±, potential wastewater area.



Photo 127. Segment 5, RP 505.5±, looking southwest of US 2.



Photo 128. Segment 5, RP 505.5±, looking north of US 2.



Photo 129. Segment 5, RP 511.8±, looking westbound.



Photo 130. Segment 5, RP 511.8±, looking eastbound.



Photo 131. Segment 5, RP 511.8±, looking northwest of US 2.



Photo 132. Segment 5, RP 511.8±, potential wastewater area.



Photo 133. Segment 5, RP 516.1±, looking westbound.



Photo 134. Segment 5, RP 516.1±, looking eastbound.



Photo 135. Segment 5, RP 516.1±, looking south of US 2.



Photo 136. Segment 5, RP 516.1±, looking north of US 2 at potential wastewater area.

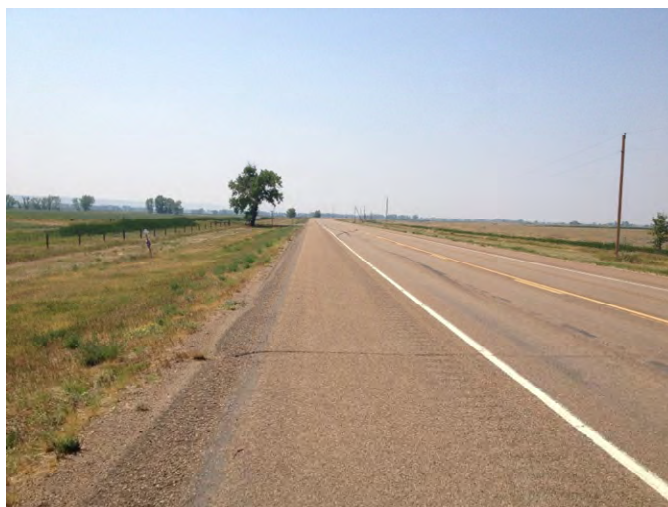


Photo 137. Segment 5, RP 518.7±, looking westbound.



Photo 138. Segment 5, RP 518.7±, looking eastbound.



Photo 139. Segment 5, RP 518.7±, looking north of US 2.



Photo 140. Segment 5, RP 518.7±, potential wastewater area.



Photo 141. Segment 5, RP 522.8±, looking westbound.

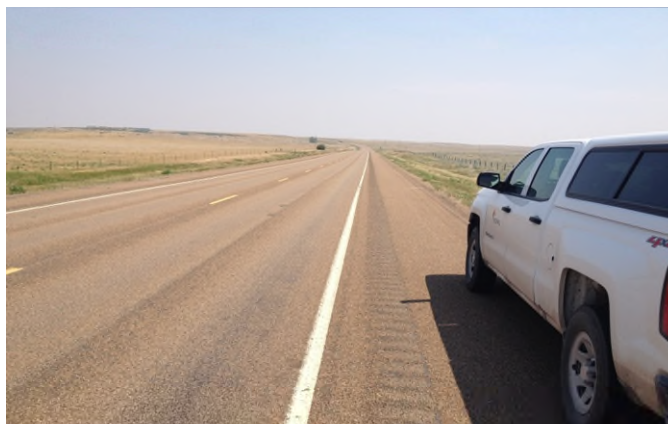


Photo 142. Segment 5, RP 522.8±, looking eastbound.



Photo 143. Segment 5, RP 522.8±, looking south of US 2 at potential wastewater area.



Photo 144. Segment 5, RP 522.8±, looking north of US 2.



Photo 145. Segment 5, RP 524.5±, looking westbound.



Photo 146. Segment 5, RP 524.5±, looking eastbound.



Photo 147. Segment 5, RP 524.5±, potential wastewater area.



Photo 148. Segment 5, RP 527.1±, looking westbound from Vandalia Rest Area.



Photo 149. Segment 5, RP 527.1±, looking eastbound from Vandalia Rest Area.



Photo 150. Segment 5, RP 527.3±, looking westbound from Vandalia Rest Area.



Photo 151. Segment 5, RP 527.3±, looking eastbound from Vandalia Rest Area.



Photo 152. Segment 5, RP 527.1±, looking northeast at existing Vandalia Rest Area site.



Photo 153. Segment 5, RP 527.1±, drainfield at existing Vandalia Rest Area site.



Photo 154. Segment 5, RP 527.1±, evidence of wastewater blockage at existing Vandalia Rest Area site.

Segment 6 – Frazer



Photo 155. Segment 6, RP 574.7±, looking westbound.



Photo 156. Segment 6, RP 574.7±, looking eastbound.



Photo 157. Segment 6, RP 574.7±, potential wastewater area.



Photo 158. Segment 6, RP 577.8±, looking westbound.



Photo 159. Segment 6, RP 577.8±, looking eastbound.



Photo 160. Segment 6, RP 581.1±, looking westbound.



Photo 161. Segment 6, RP 581.1±, looking eastbound.



Photo 162. Segment 6, RP 581.1±, potential wastewater area.



Photo 163. Segment 6, RP 585.4±, looking westbound.



Photo 164. Segment 6, RP 585.4±, looking eastbound.



Photo 165. Segment 6, RP 586.9±, looking westbound.

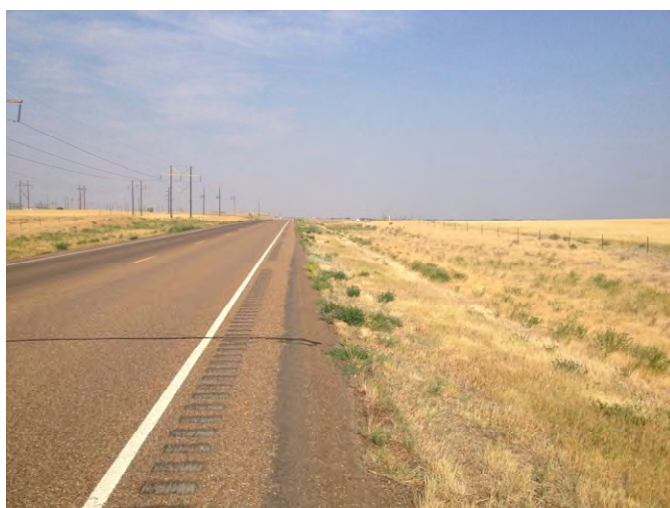


Photo 166. Segment 6, RP 586.9±, looking eastbound.



Photo 167. Google Image: Segment 6, RP 593.3±, looking westbound.



Photo 168. Google Image: Segment 6, RP 593.3±, looking eastbound.

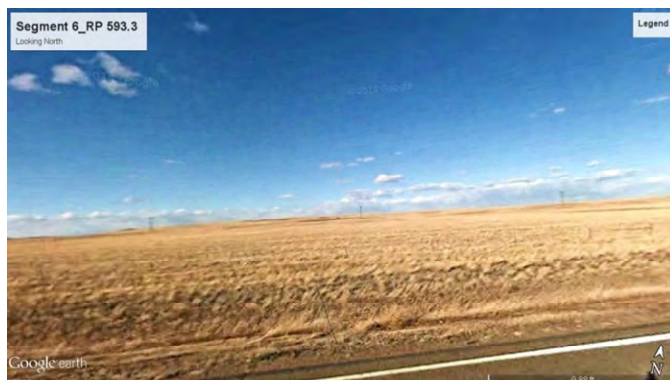


Photo 169. Google Image: Segment 6, RP 593.3±, looking north of US 2.



Photo 170. Segment 6, RP 594.9±, looking westbound.



Photo 171. Segment 6, RP 594.9±, looking eastbound.



Photo 172. Segment 6, RP 594.9±, potential wastewater area.