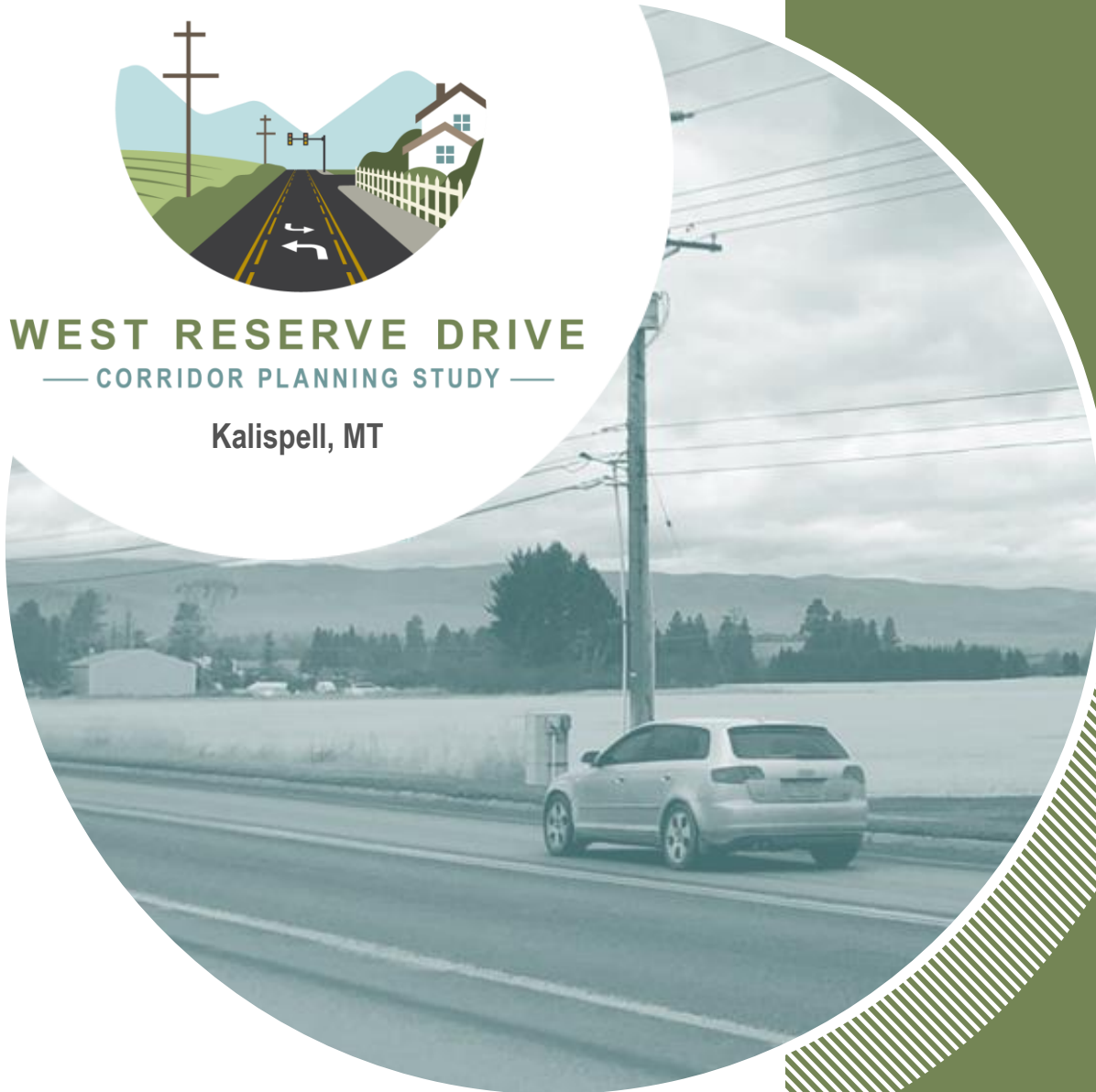




WEST RESERVE DRIVE
— CORRIDOR PLANNING STUDY —

Kalispell, MT



SEPTEMBER 2021

PUBLIC INFORMATION

MEETING #2

Prepared for:



Prepared by:



TITLE VI CONSIDERATIONS

This meeting is held pursuant to Title VI of the 1964 Civil Rights Act, which ensures that no person shall be excluded from participation in, be denied the benefits of, or otherwise be subjected to discrimination on the basis of a protected status under any MDT program or activity.



AGENDA

- Introductions
- Planning Study Process
- Corridor Overview and Study Identification
- Key Findings and Recommendations
- Next Steps
- Question and Answer Forum





WEST RESERVE DRIVE

— CORRIDOR PLANNING STUDY —



PLANNING STUDY PROCESS

WHAT IS A CORRIDOR STUDY?

A corridor study is conducted before design, right-of-way acquisition, environmental compliance, and construction.

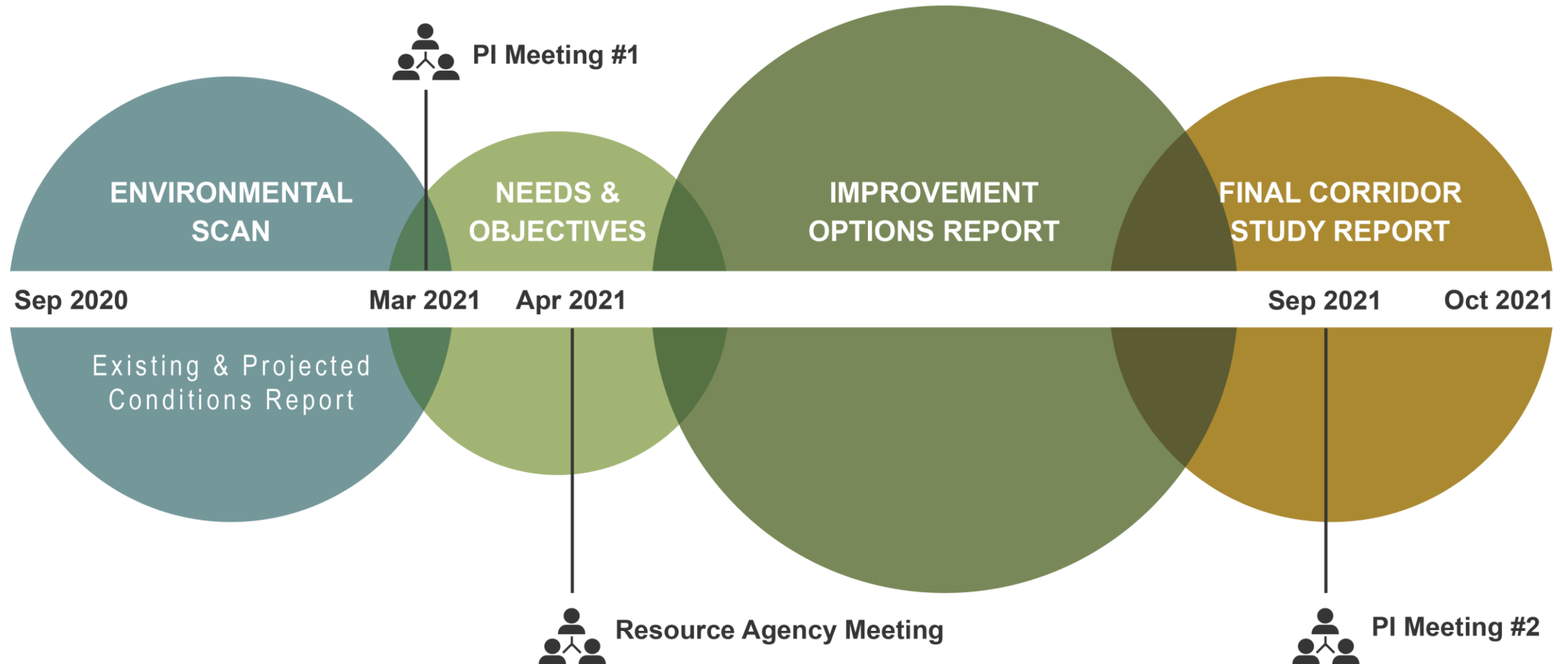


GOALS & PURPOSE

- Identify corridor needs and objectives
- Identify potential impacts and constraints
- Identify short, mid, and long-term improvement options
- Develop planning-level cost estimates
- Identify potential funding sources
- Develop information and data to be forwarded into the environmental process if a project moves forward from the study



PLANNING PHASE SCHEDULE





WEST RESERVE DRIVE
— CORRIDOR PLANNING STUDY —



**CORRIDOR
OVERVIEW & STUDY
IDENTIFICATION**

CORRIDOR OVERVIEW

- Traffic backed up at many intersections
- Increasing number of crashes
- Anticipated developments in the area
- Growth in north end of Flathead Valley



STUDY IDENTIFICATION

- MDT Districts identify study corridors based on public feedback from their areas
- This corridor was identified based on ongoing public comments about continued growth, traffic volumes, and safety
- The study provides a broad view of the entire corridor rather than addressing individual locations separately





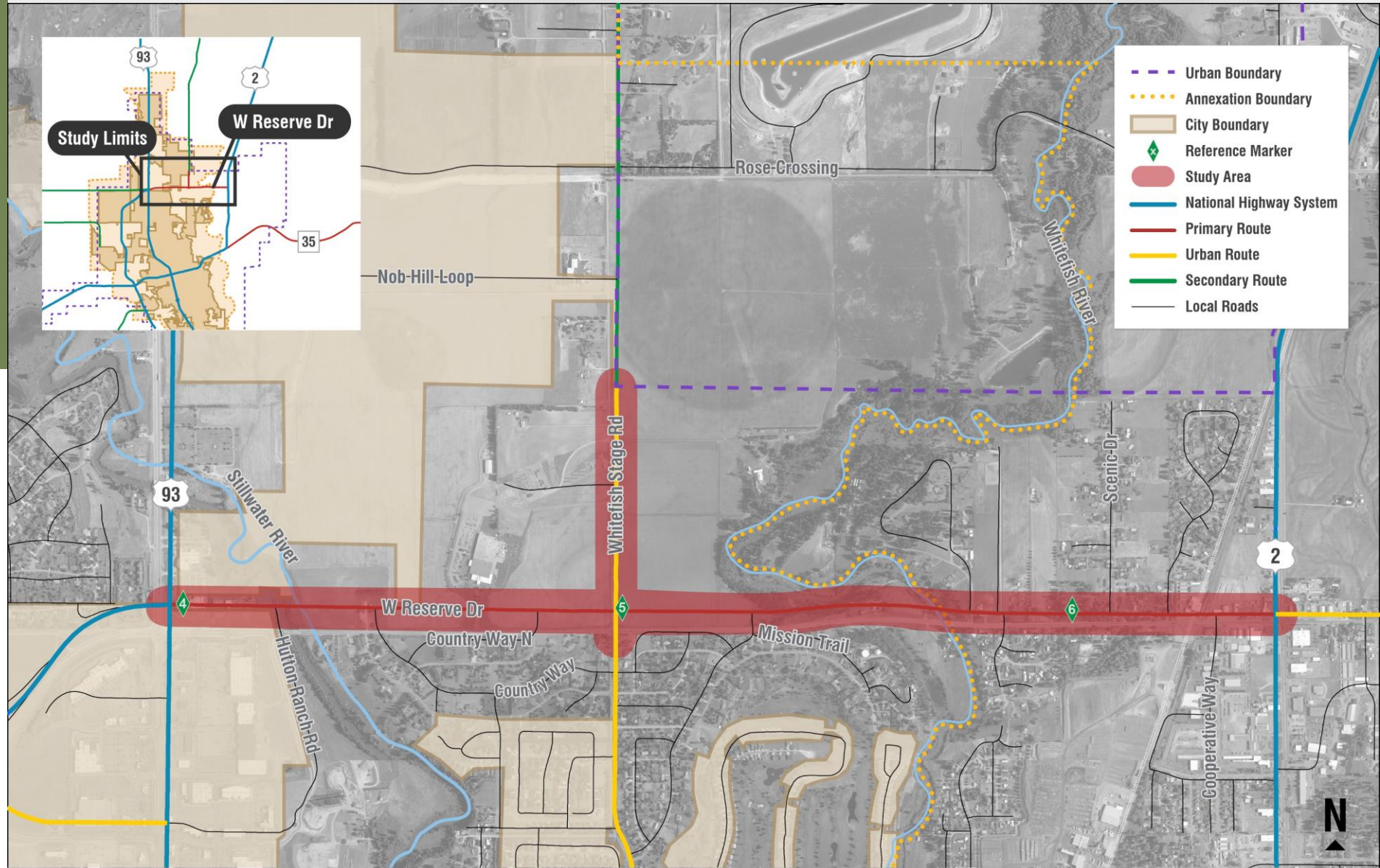
WEST RESERVE DRIVE
— CORRIDOR PLANNING STUDY —



**KEY FINDINGS
& RECOMMENDED
IMPROVEMENTS**

STUDY AREA

- W. Reserve Dr. – US 93 to US 2
- Whitefish Stage Rd. – 0.5 mile north and 300 feet south
- 250-foot buffer on either side of centerline



KEY FINDINGS: NEEDS & OBJECTIVES

NEED 1:

Improve the Safety of the Corridor

Objectives

- Reduce the frequency of crashes for all users, in support of MDT's Vision Zero
- Reduce vehicle conflicts

725 TOTAL CRASHES (2010 – 2019)



100
MINOR INJURIES

23
SERIOUS INJURIES



58%
REAR-END COLLISIONS



38% of crashes occurred during
CONGESTED TRAFFIC CONDITIONS
(between 3-6 pm)

KEY FINDINGS: NEEDS & OBJECTIVES

NEED 2:

Improve the Corridor Transportation Operations

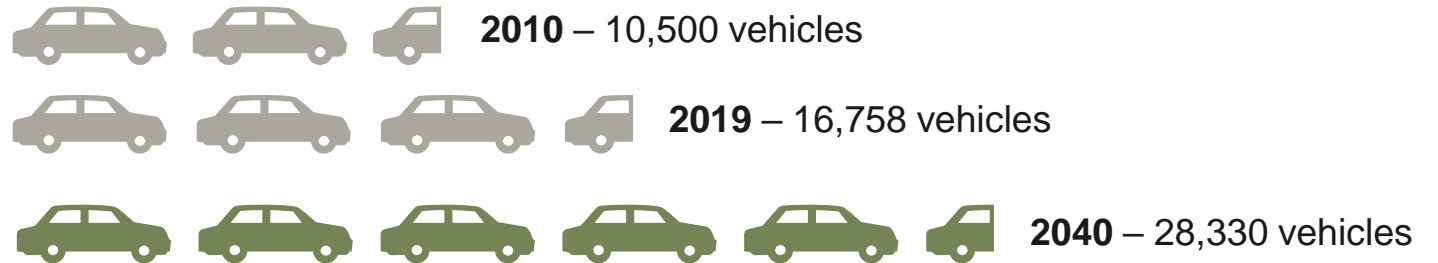
Objectives

- Accommodate existing/future travel demand
- Improve intersection operations/level of service
- Consider all modes of transportation
- Employ travel demand management strategies

2.4% TRAFFIC VOLUME
GROWTH PER YEAR



ROADWAY AT OR OVER CAPACITY
in 2040

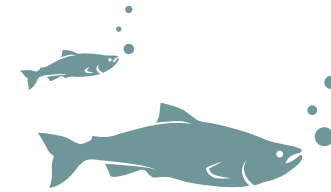


CHANGE in average traffic growth across corridor between
2019 to 2040 (↑ 11,572 vehicles in 20 years)

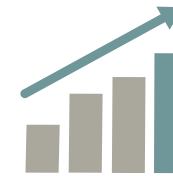
KEY FINDINGS: NEEDS & OBJECTIVES

OTHER CONSIDERATIONS:

- Consistency with local plans and developments
- Municipal infrastructure improvements
- Public and private utilities
- Funding availability
- Maintenance operations, responsibility, and cost
- Constructability and related impacts
- Impacts to adjacent businesses and residences
- Impacts to environmental resources and social equity
- Stormwater management



Stillwater and Whitefish Rivers are important
ENVIRONMENTAL RESOURCES



14.8%

INCREASE IN POPULATION
In Flathead Valley since 2010

RECOMMENDED IMPROVEMENTS

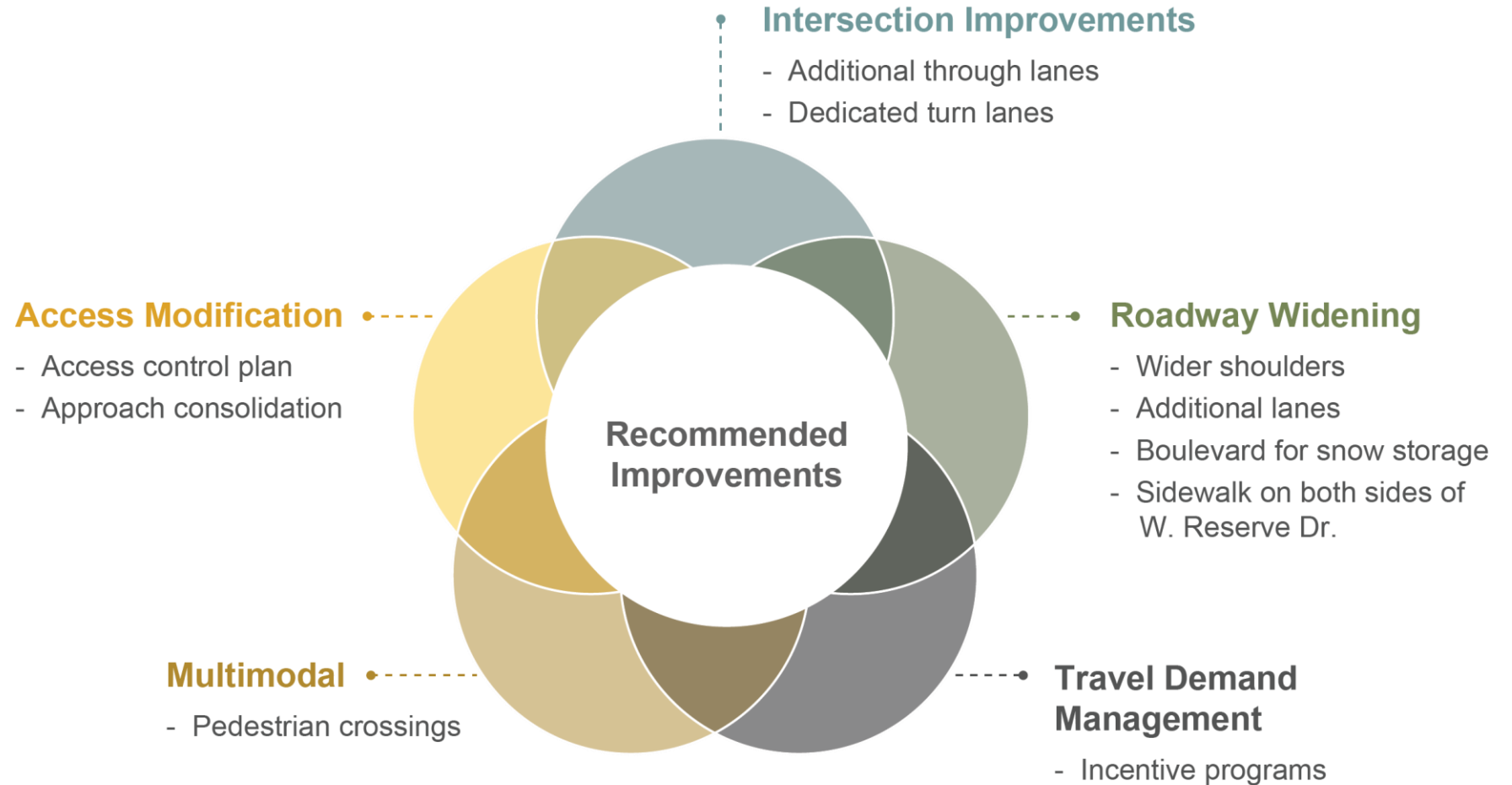


The study identified a

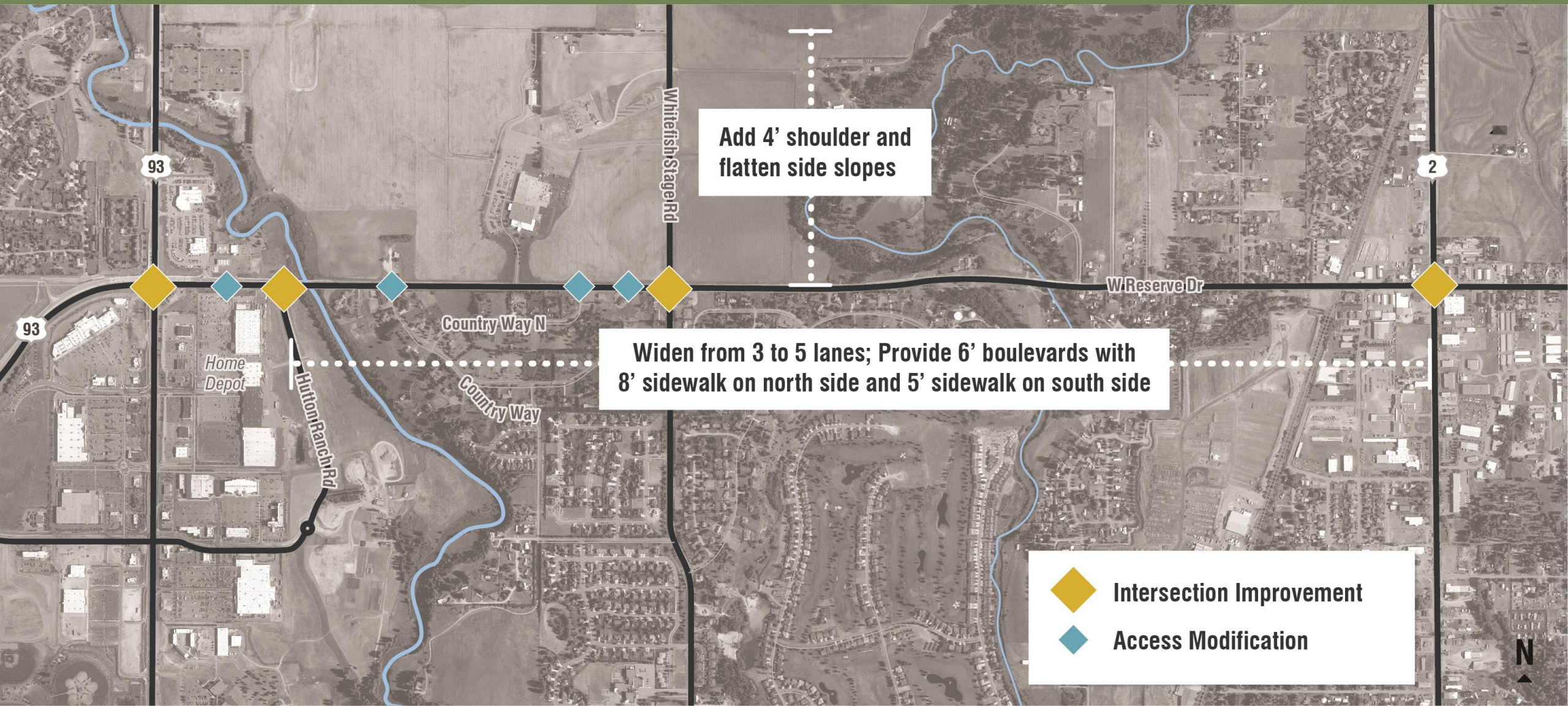
RANGE OF IMPROVEMENT OPTIONS

to address the corridor

NEEDS AND OBJECTIVES



RECOMMENDED IMPROVEMENTS





WEST RESERVE DRIVE

— CORRIDOR PLANNING STUDY —



NEXT STEPS

PROJECT PHASES



We Are Here

Public Involvement (Ongoing throughout all steps)

WE WANT TO HEAR FROM YOU!

There are various opportunities to offer input to this corridor planning study:



MDT Comment Form

<https://www.mdt.mt.gov/pubinvolve/westreserve/>



Contact the Project Team

Vicki Crnich, MDT Project Manager
406.444.7653 // vcrnich@mt.gov